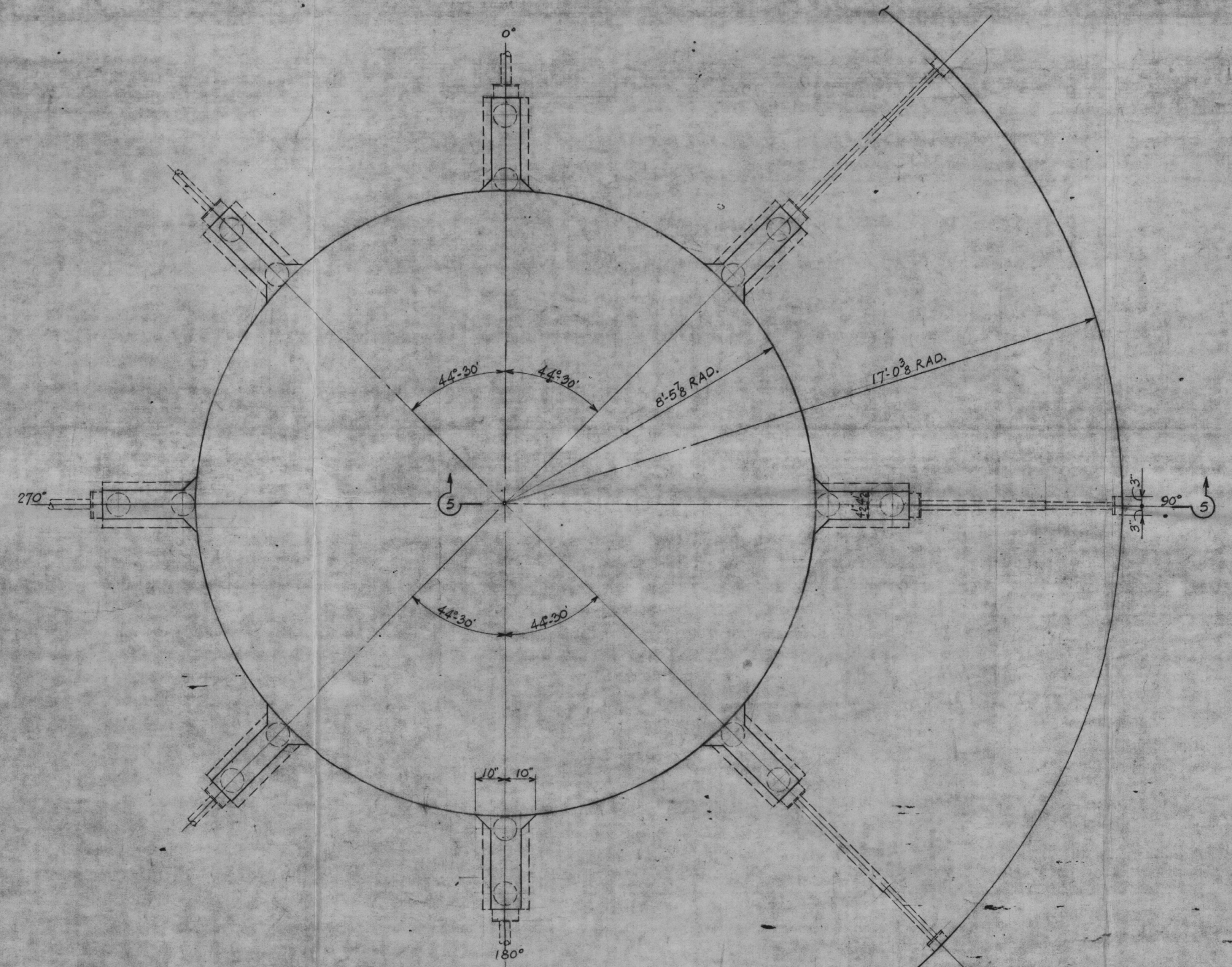
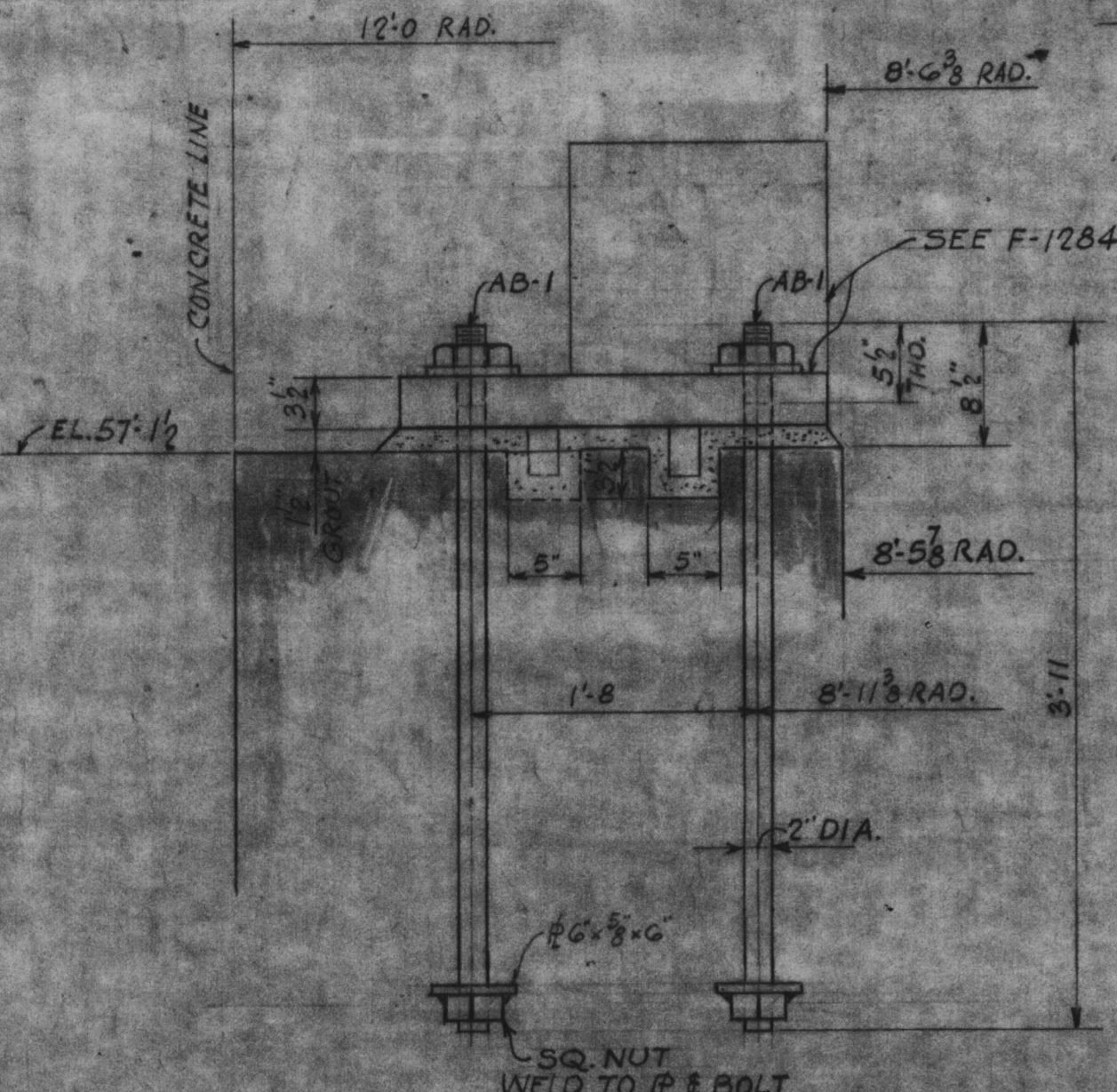


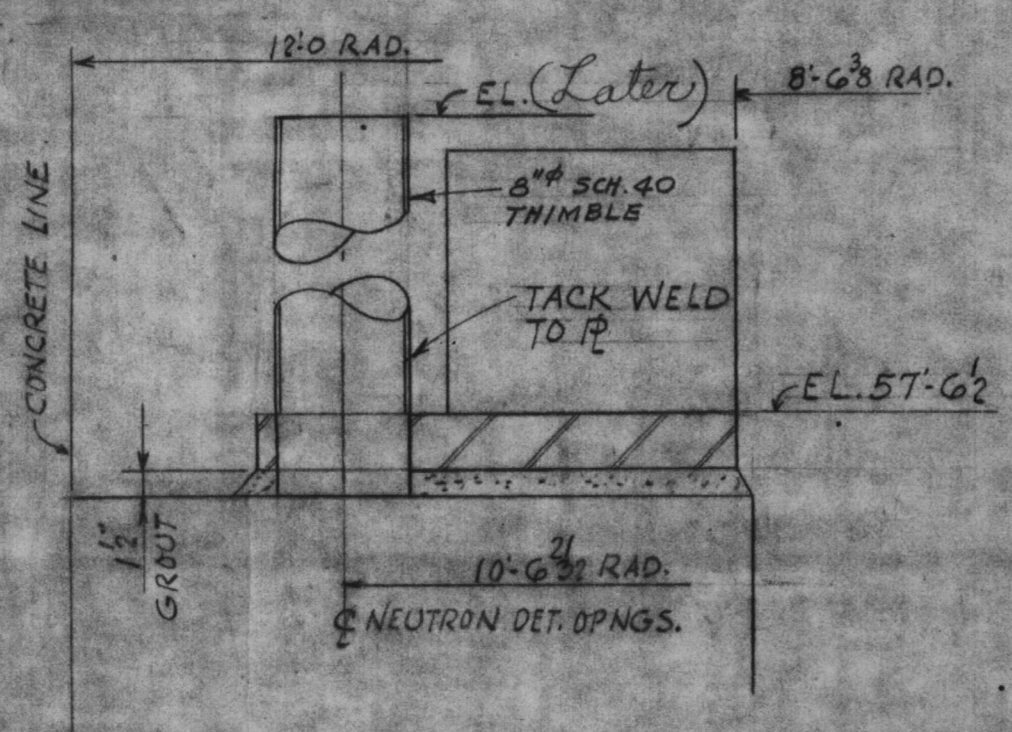
PLAN
ANCHOR BOLT SETTING & SHEAR KEYS
SCALE 1/4"=1'-0"



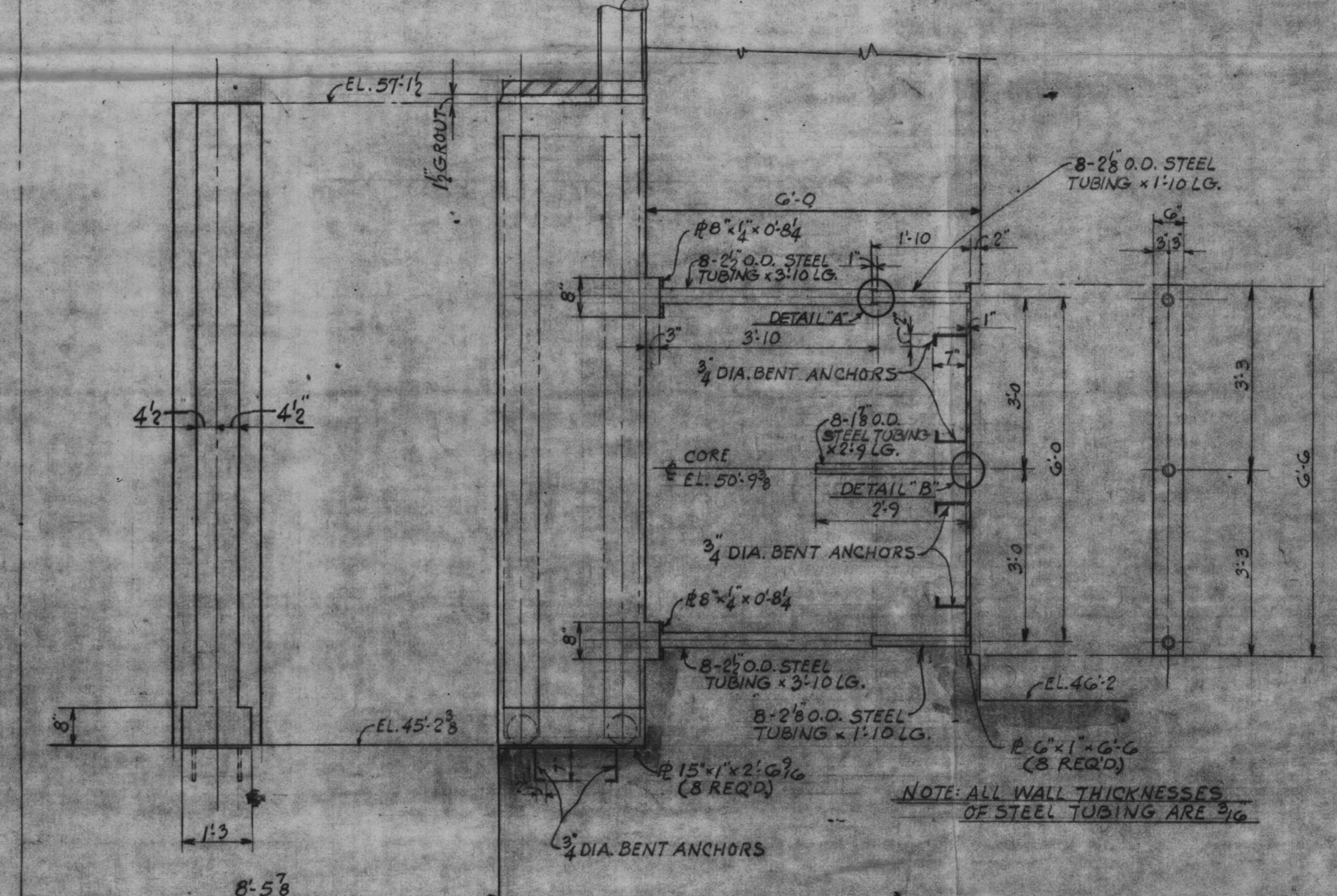
PLAN BELOW ELEVATION 56'-6"
SCALE 1/4"=1'-0"



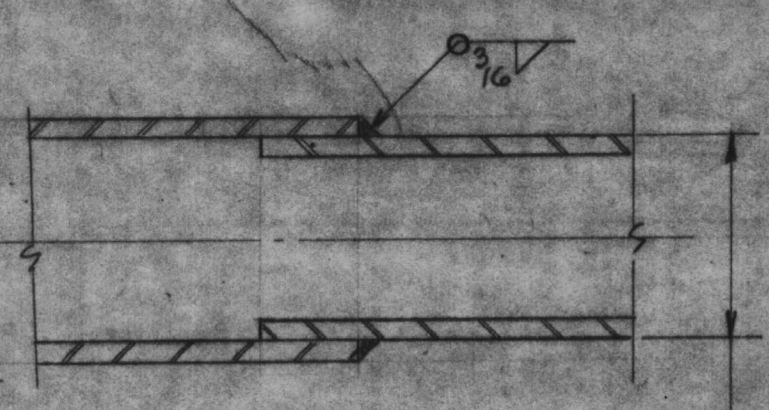
SECTION 1-1
SCALE 1"=1'-0"



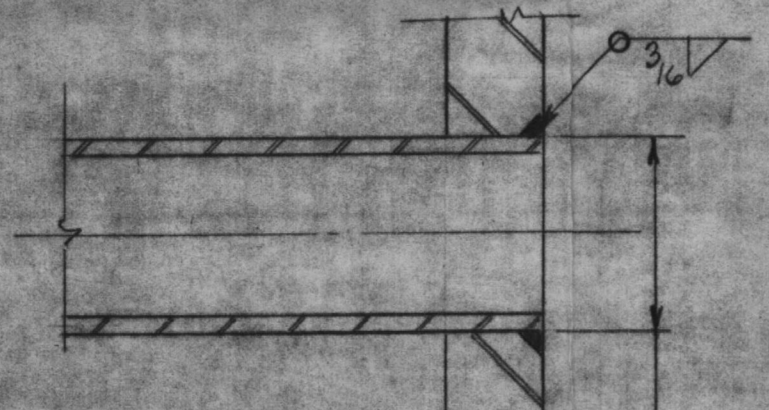
SECTION 2-2
SCALE 1"=1'-0"



SECTION 5-5
SCALE 1/4"=1'-0"



DETAIL "A"
SCALE 1/2"=1'-0"



DETAIL "B"
SCALE 1/2"=1'-0"

LEGEND
A.B.C. - ANCHOR BOLT CIRCLE
C.L. - CHORD LENGTH
A.L. - ARC LENGTH

REFERENCE DRAWINGS
9321-F-1264 - REACTOR VESSEL SUPPORT STEEL
P.F. 9321-1125 - NEUTRON DETECTOR POS. DEV.
CONCRETE CUT-OUT DETAILS (S) SP. 328899-F

PRO APERTURE CARD

POOR ORIGINAL

TERA APERTURE CARD

1	1/20/57	FINAL ISSUE	1/11/57	WBS	RBC
2	1/22/57	FIRST ISSUE FOR CONSTRUCTION	1/11/57	WBS	RBC
3	1/22/57	DATE	1/11/57	WBS	RBC
4	1/22/57	DESCRIPTION	1/11/57	WBS	RBC
5	1/22/57	ENGINEER	1/11/57	WBS	RBC
6	1/22/57	STATE NO.	1/11/57	WBS	RBC
7	1/22/57	NO.	1/11/57	WBS	RBC
8	1/22/57	UNITED ENGINEERS & CONSTRUCTORS INC.	1/11/57	WBS	RBC

WESTINGHOUSE ELECTRIC CORPORATION
CONTAINMENT
REACTOR SUPPORT ANCHOR BOLT DETAILS
& NEUTRON DETECTOR DETAILS
FOR
CONSOLIDATED EDISON COMPANY
INDIAN POINT GENERATING STATION
UNIT NO. 2
U.E.C. DWG. NO. 9321-F-1327-1
CON. ED. CO. DWG. NO. A 200 297