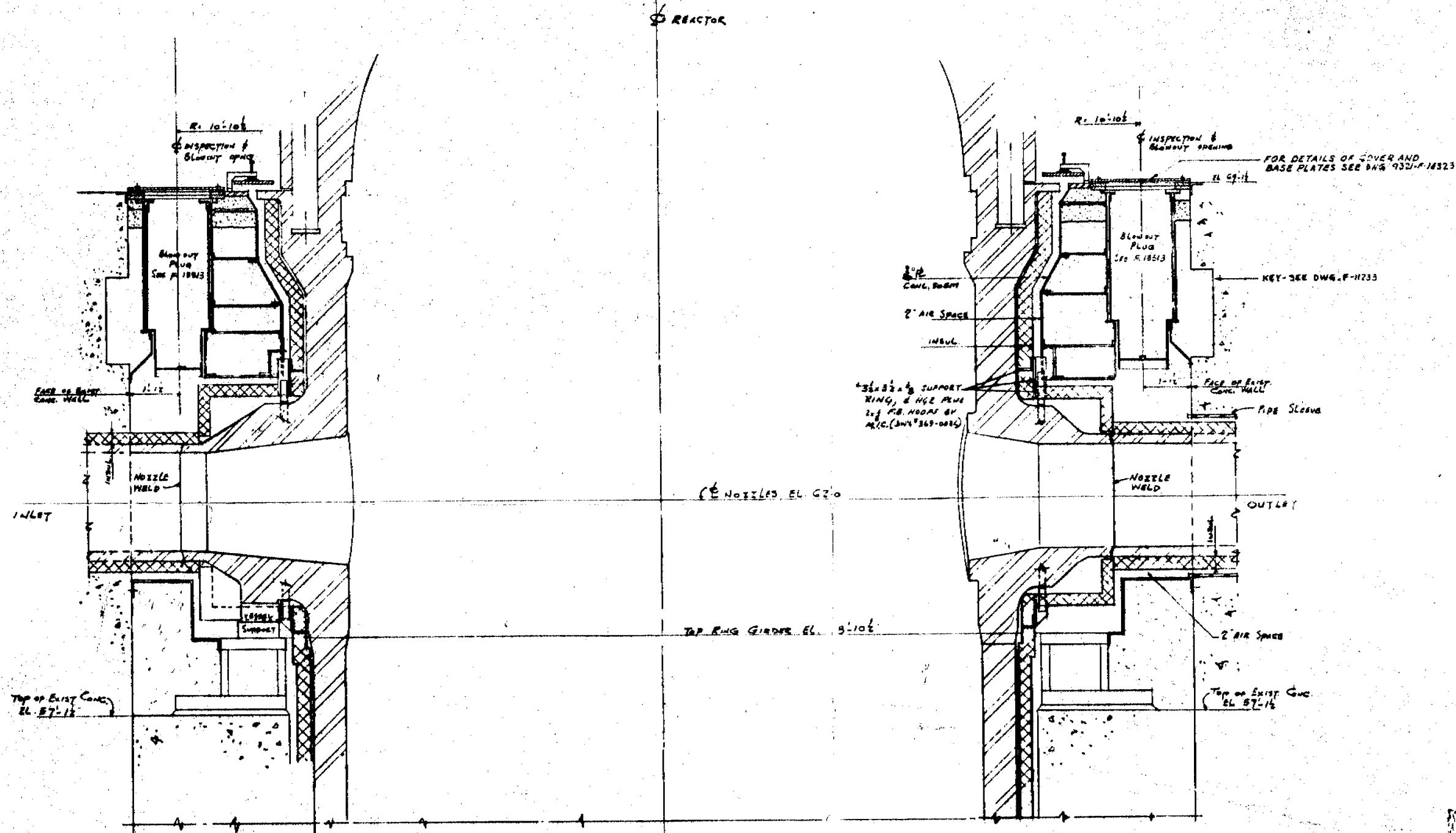
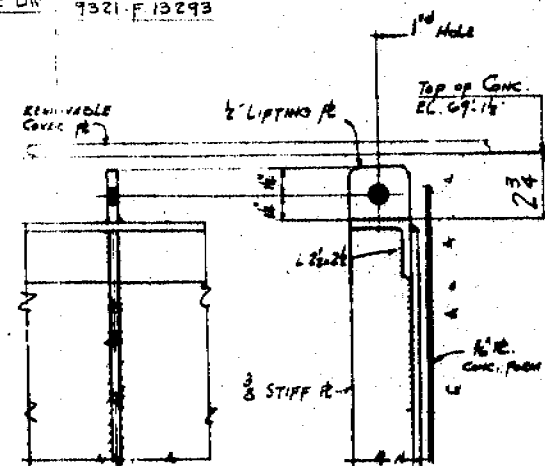


9321-F-13303-0
 CONSOLIDATED EDISON COMPANY
 INDIAN POINT GENERATING STATION



SECTION 1-1 SEE DWG. 9321-F-13283
 9321-F-13293
 SCALE 3/4"=1'-0"



DETAIL A (SEE SPEC. B-8-F-13313)
 SCALE 3/4"=1'-0"

PRC
 APERTURE
 CARD

TERA
 APERTURE
 CARD

POOR ORIGINAL

WORK THIS SHEET WITH 9321-F-13283, F-13293, F-13313
 REFER TO DWG. F-11233

WESTINGHOUSE ELECTRIC CORPORATION	
CONTAINMENT BUILDING	
METAL FORMS FOR REACTOR VESSEL	
SHEET NO. 3	
FOR	
CONSOLIDATED EDISON COMPANY	
INDIAN POINT GENERATING STATION	
UNIT NO. 3	
U.S.A.C. DWG. NO.	CON. ED. CO. DWG. NO.
9321-F-13303-0	A-201616
UNITED ENGINEERS & CONSTRUCTORS INC.	

8111070633