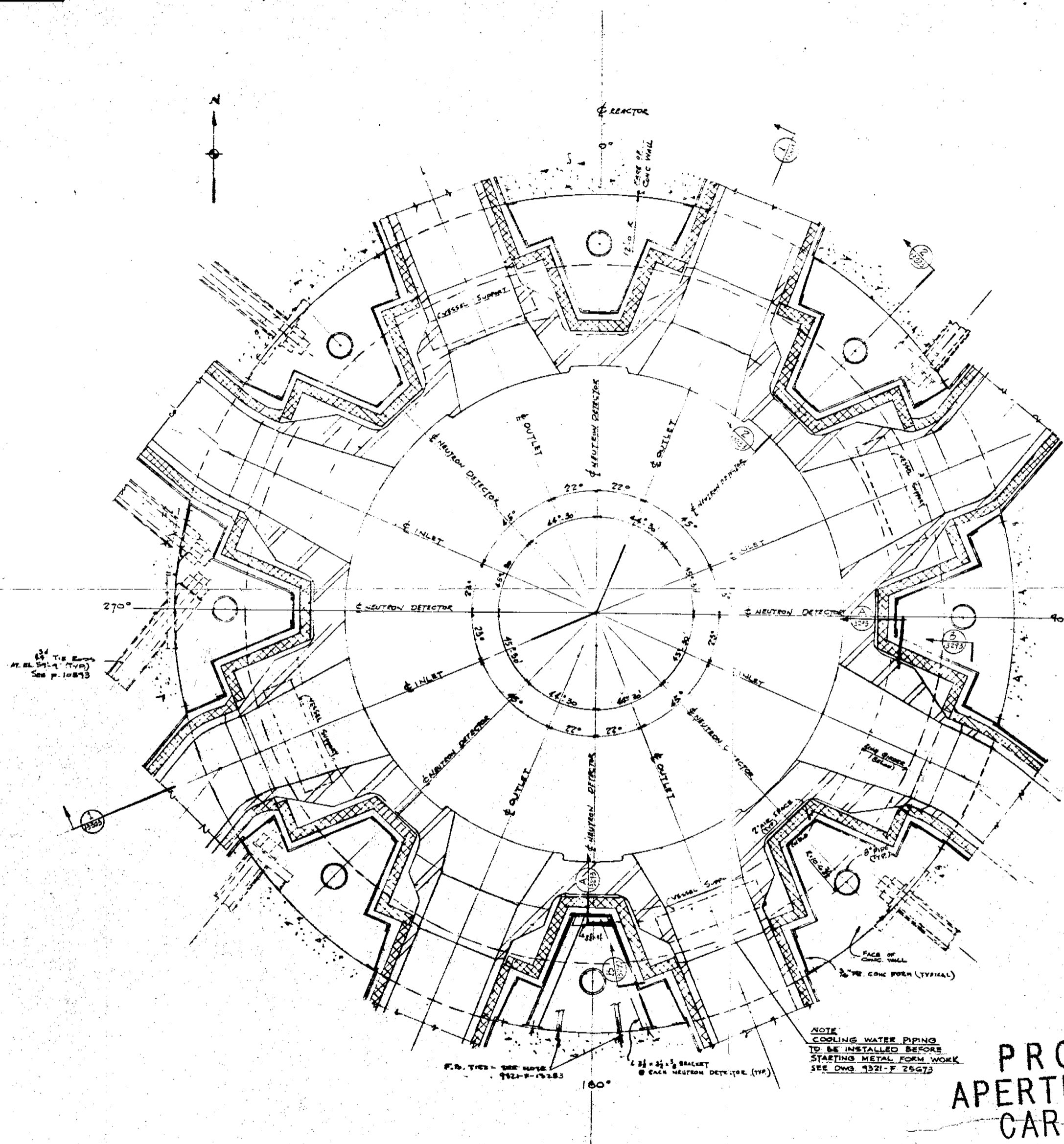
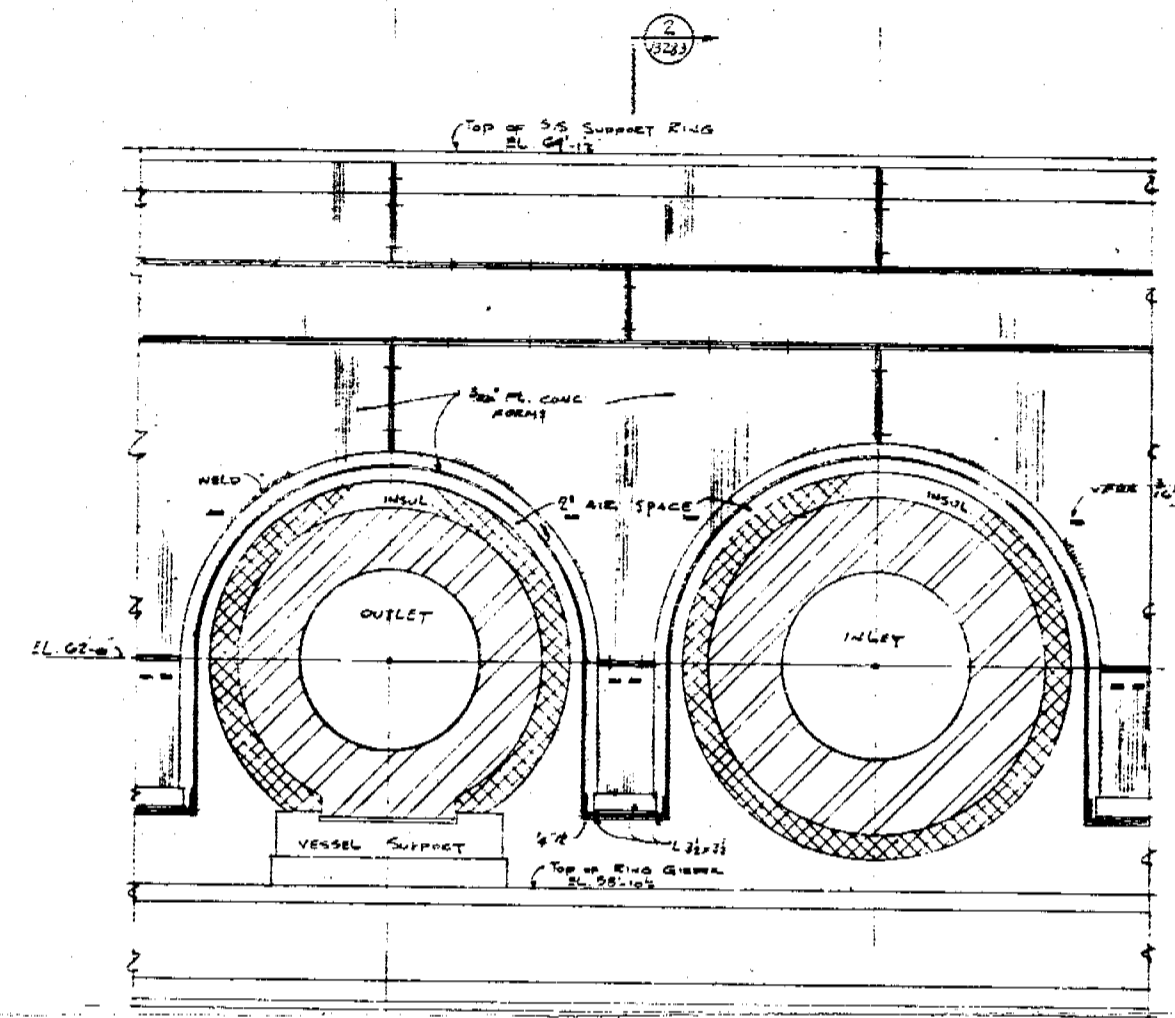


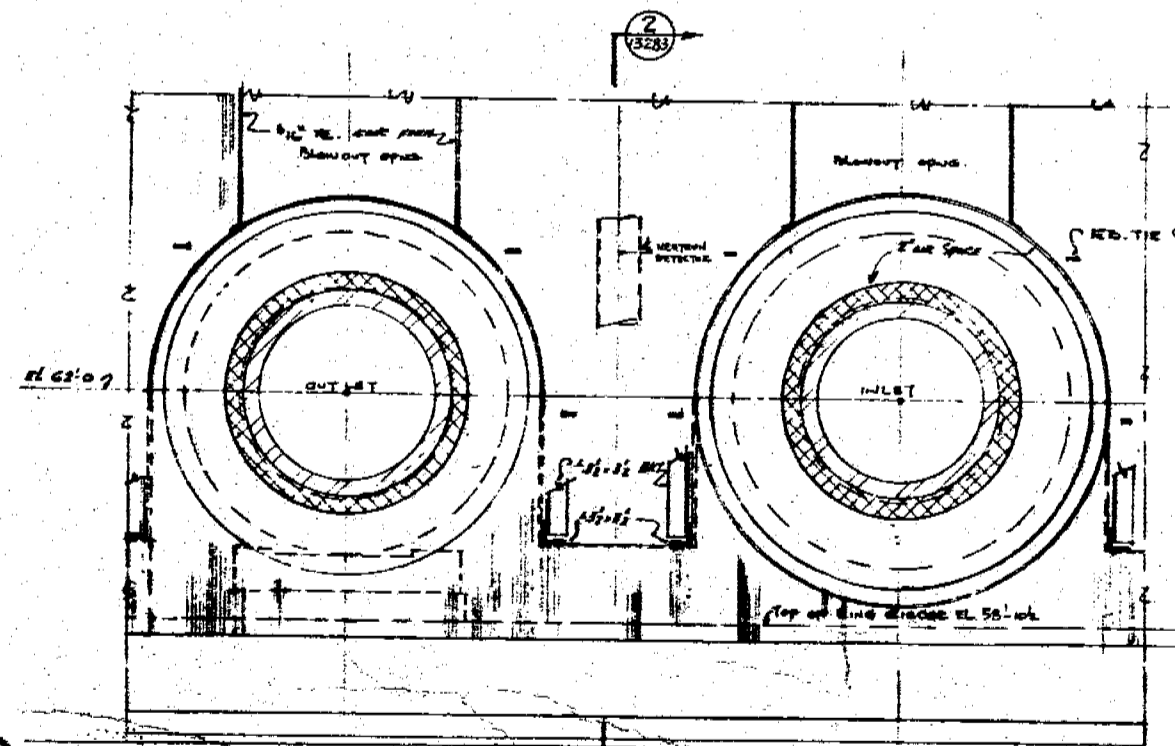
A-201615
 INDIAN POINT
 UNIT NO. 2



PLAN AT ELEV. 62'-0"
 SCALE 3/4" = 1'-0"



SECTION A-A (EXPANDED)
 SCALE 3/4" = 1'-0"



SECTION B-B (EXPANDED)
 SCALE 3/4" = 1'-0"

PRC
 APERTURE
 CARD

TERA
 APERTURE
 CARD

NOTE:
 COOLING WATER PIPING
 TO BE INSTALLED BEFORE
 STARTING METAL FORM WORK
 SEE DWG 9321-F-25675

WORK THIS SHEET WITH 9321-F-13283, F-13303 & F-13313

POOR ORIGINAL

NO.	DESCRIPTION	DATE	BY

WESTINGHOUSE ELECTRIC CORPORATION
 CONTAINMENT BUILDING
 METAL FORMS FOR REACTOR VESSEL
 SHEET NO. 2
 FOR
 CONSOLIDATED EDISON COMPANY
 INDIAN POINT GENERATING STATION
 UNIT NO. 2
 U.S. & C. DWG. NO. 9321-F-13293-0
 2044 ED. CON. DWG. NO. A-201615
 UNITED ENGINEERS & CONSTRUCTORS INC.

8111070613