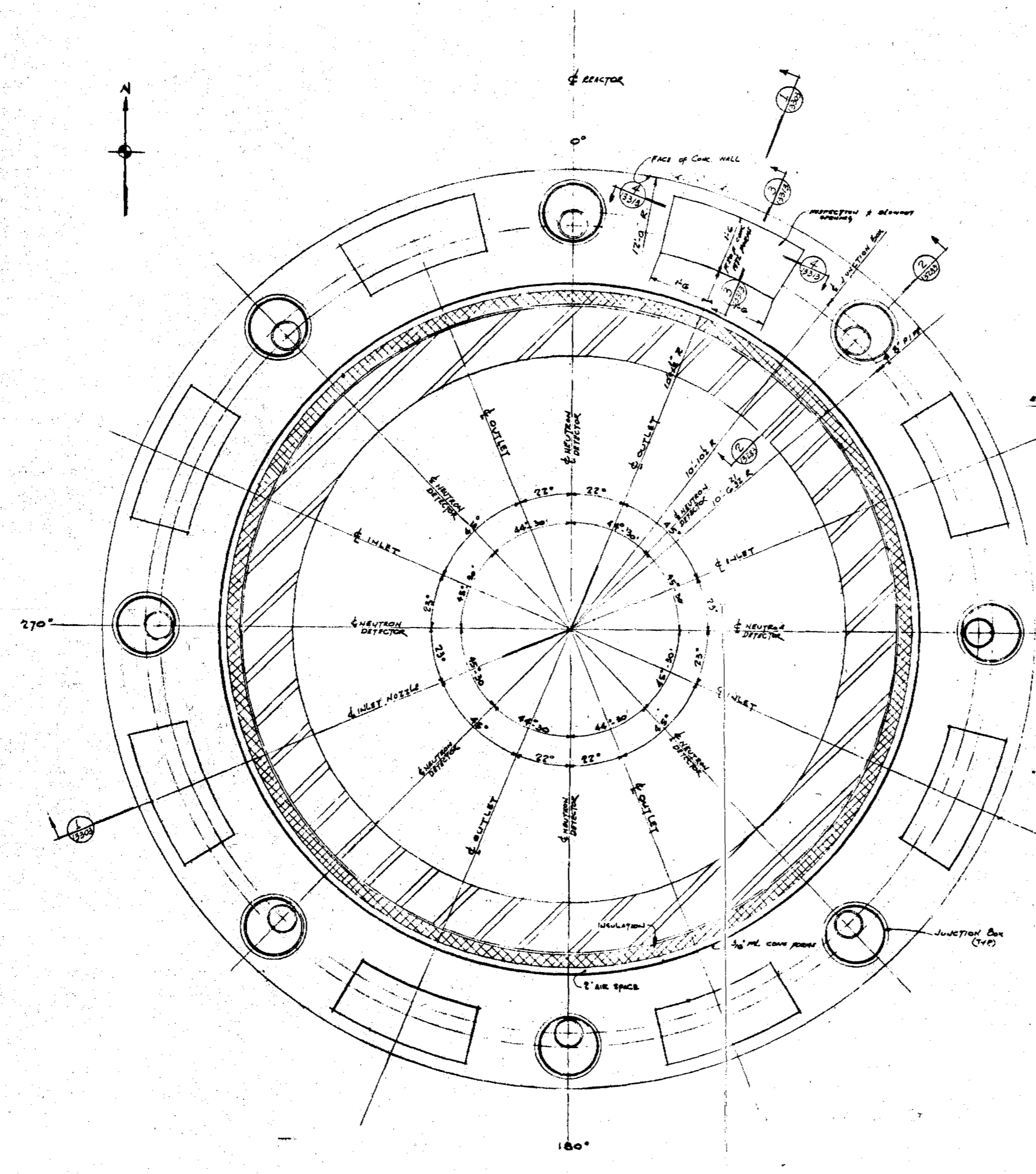
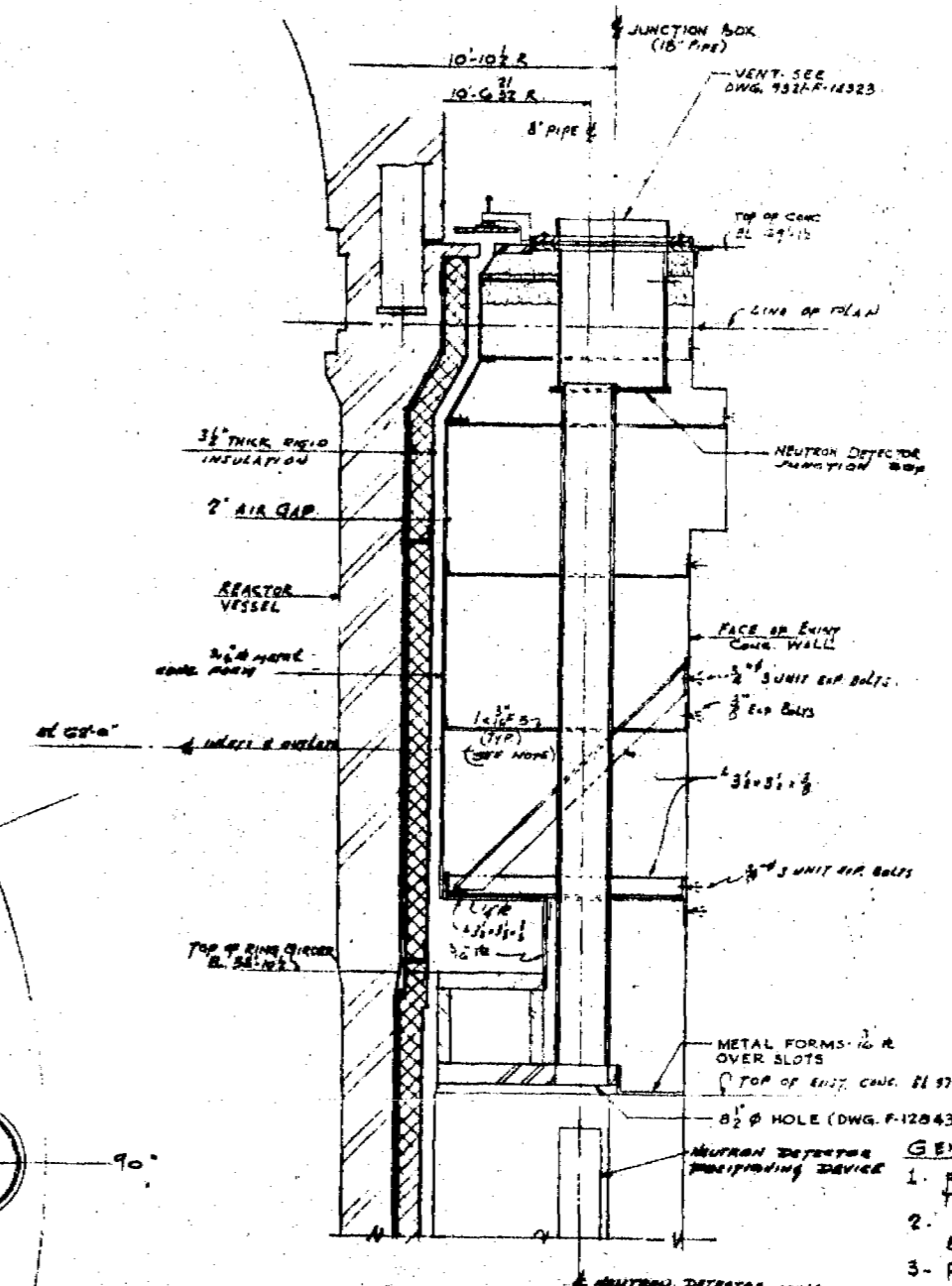


A-201614
 INDIAN POINT
 2ND UNIT



PLAN BELOW ELEV. G9-12
 SCALE: 3/4"=1'-0"



SECTION 2-2
 TYP AT NEUTRON DETECTOR
 SCALE: 3/4"=1'-0"

- GENERAL NOTES**
1. FIELD TO FURNISH ANY ADDITIONAL TIES & STENTS TO KEEP FORM PLATES IN PLACE.
 2. 2" SPACE MUST BE MAINTAINED BETWEEN FORMWORK & INSULATION - BLOCKING NOT PERMITTED
 3. POUR CONCRETE FILL IN NOT MORE THAN 2'-0" HIGH COURSES
 4. VERIFY ALL DIMENSIONS IN FIELD.
 5. STRUCTURAL MISCELLANEOUS STEEL SHALL CONFORM TO THE LATEST STANDARD SPECIFICATION OF THE ASTM DESIGNATION A-36
 6. ALL WELDING SHALL CONFORM TO THE LATEST REVISION OF THE AWS CODE.

PRC
 APERTURE
 CARD

TERA
 APERTURE
 CARD

- REFERENCE DRAWINGS**
- REACTOR VESSEL - ASSEMBLY ELEVATION RP 9321-05-2380
 - GEN. ASSEMBL. PLAN RP 9321-05-2381
 - PRIM. COOLANT PRESS. PIPING PLAN (SEATH) 9321-F-2943
 - AUX. COOL. SYS. PIPING AT REACTOR COOLANT SUPPORT BLOCKS 9321-F-2947
 - REFRIG. CANAL LINE PLATES - SHY #1 9321-F-1782
 - INTERNAL CONG. PLAN EL. G9-0 & SECTIONS 9321-F-1129
 - REACTOR PIT CONG. & REINF. DETAILS 9321-F-1129
 - INTERNAL CONG. PLAN EL. G9-0 & G9-1 9321-F-1129
 - REACTOR SUPPORT ARCH. S. INT. & NEUTRON INTERFERE 9321-F-1327
 - DETAILS 9321-F-1327
 - REACTOR COOLING AIR FLOW GUARD 9321-F-1432
- WORK THIS SHEET WITH 9321-F-1327, F1328 & F1329

INSULATION COMPANY REF. DWG.
 MIC 369-001C INSULATION ASSEMBLY
 MIC 369-002 INSULATION SUPPORT ARCH. @ NOZZLES
 MIC 369-003 INSULATION SUPPORT ARCH. @ NOZZLES
 MIC 369-004 VESSEL INSULATION DEVELOPMENT FOR PANEL COURSE
 MIC 369-021C REMOVABLE INSULATION, TOP HEAD (2ND) NUMBER COURSE
 MIC 369-022 NOZZLE COVER INSTALLATION
 MIC 369-023C NOZZLE HEAD (NH) & HEMISPHERICAL HEAD (HM) INTL. PANELS
 MIC 369-024P TOP HEAD SUPPORT TRUSS
 BILL OF MAT'L DIAMOND ORDER MIC 369
 WASHINGTON D.C. 434-F-70611B

POOR ORIGINAL

WESTINGHOUSE ELECTRIC CORPORATION	
CONTAINMENT BUILDING	
METAL FORMS FOR REACTOR VESSEL	
SHEET NO. 1	
FOR	
CONSOLIDATED EDISON COMPANY	
INDIAN POINT GENERATING STATION	
UNIT NO. 3	
U.S. & CAN. PAT. NO.	CON. ED. CO. SHEET NO.
9321-F-13283-0	A-201614
UNITED ENGINEERS & CONSTRUCTORS INC.	

8111070609