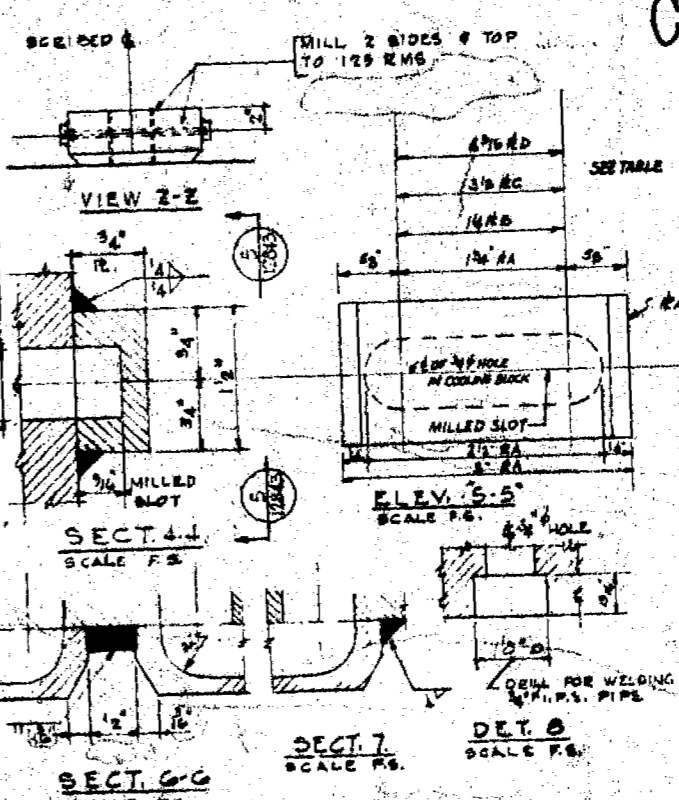
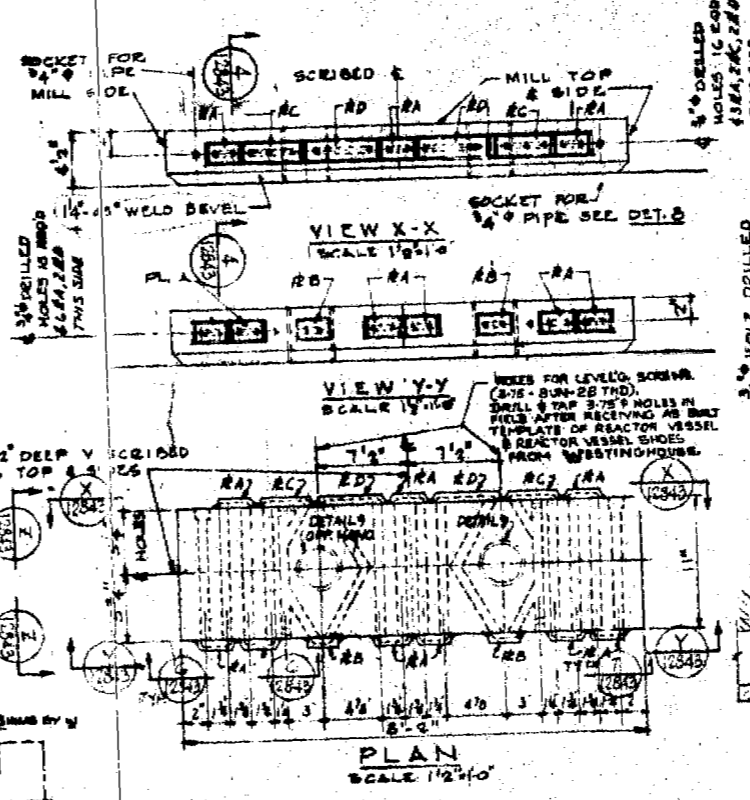
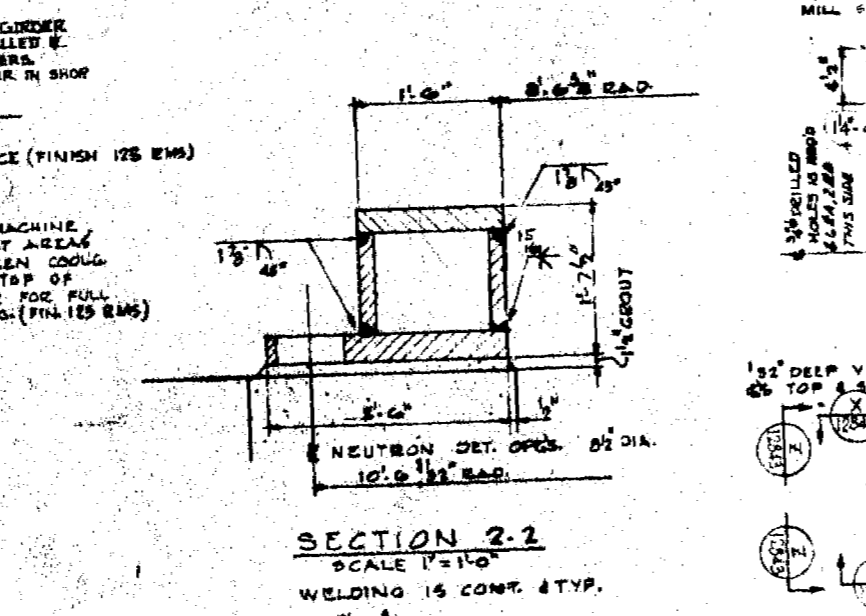
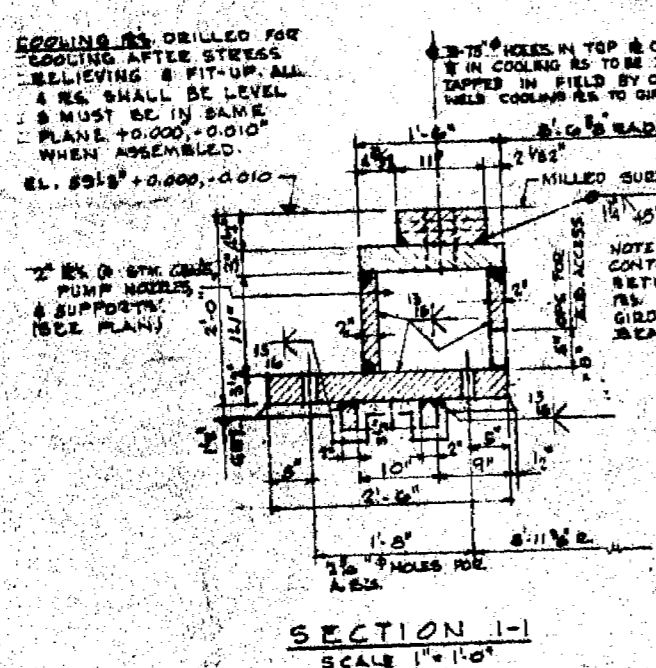
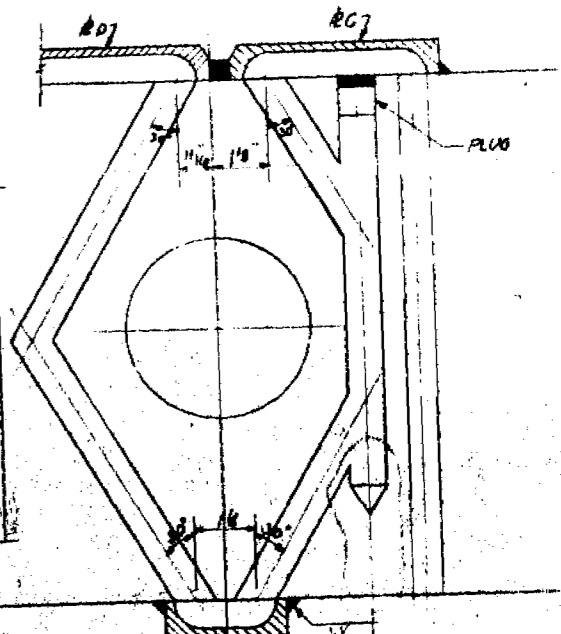
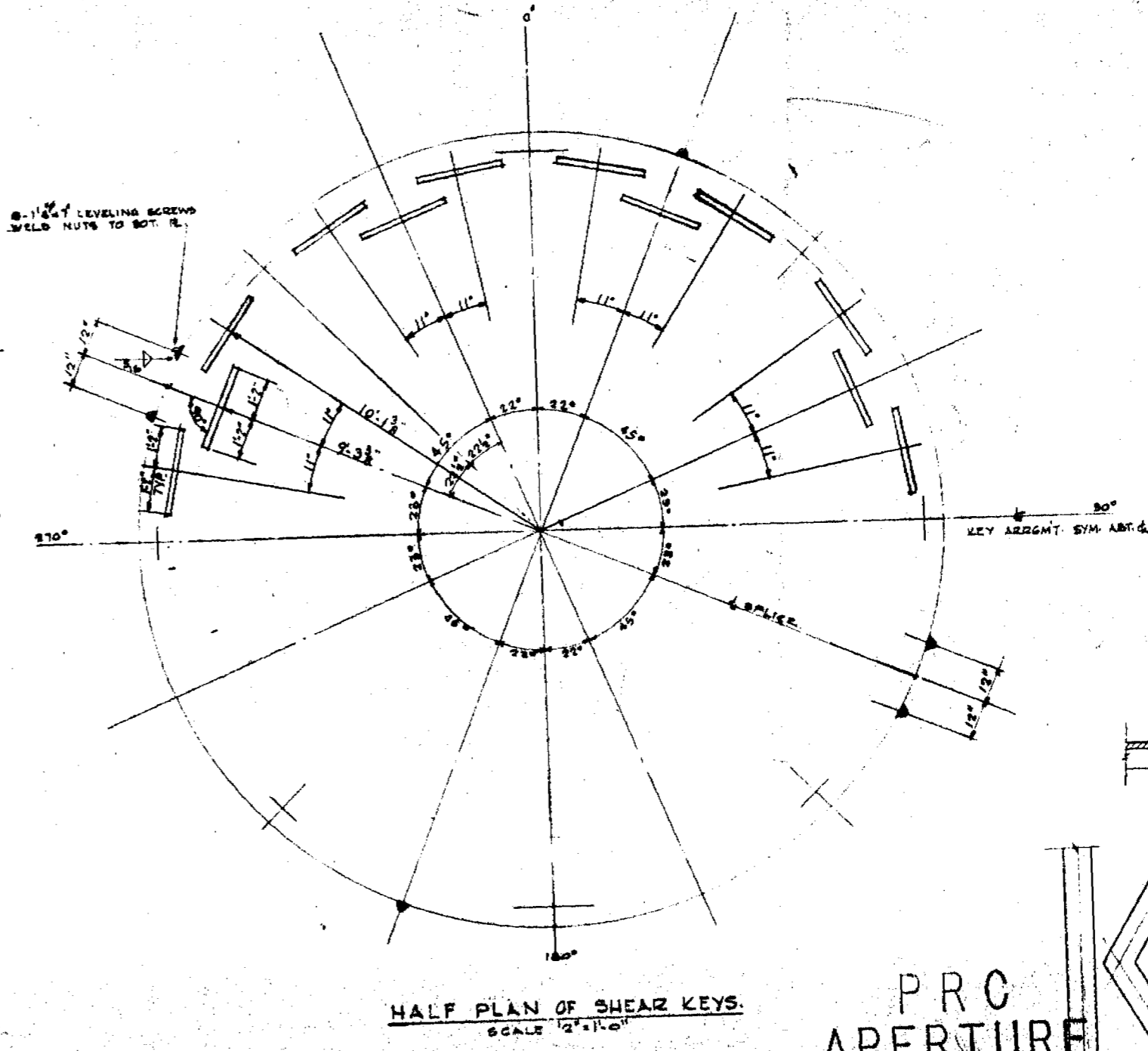
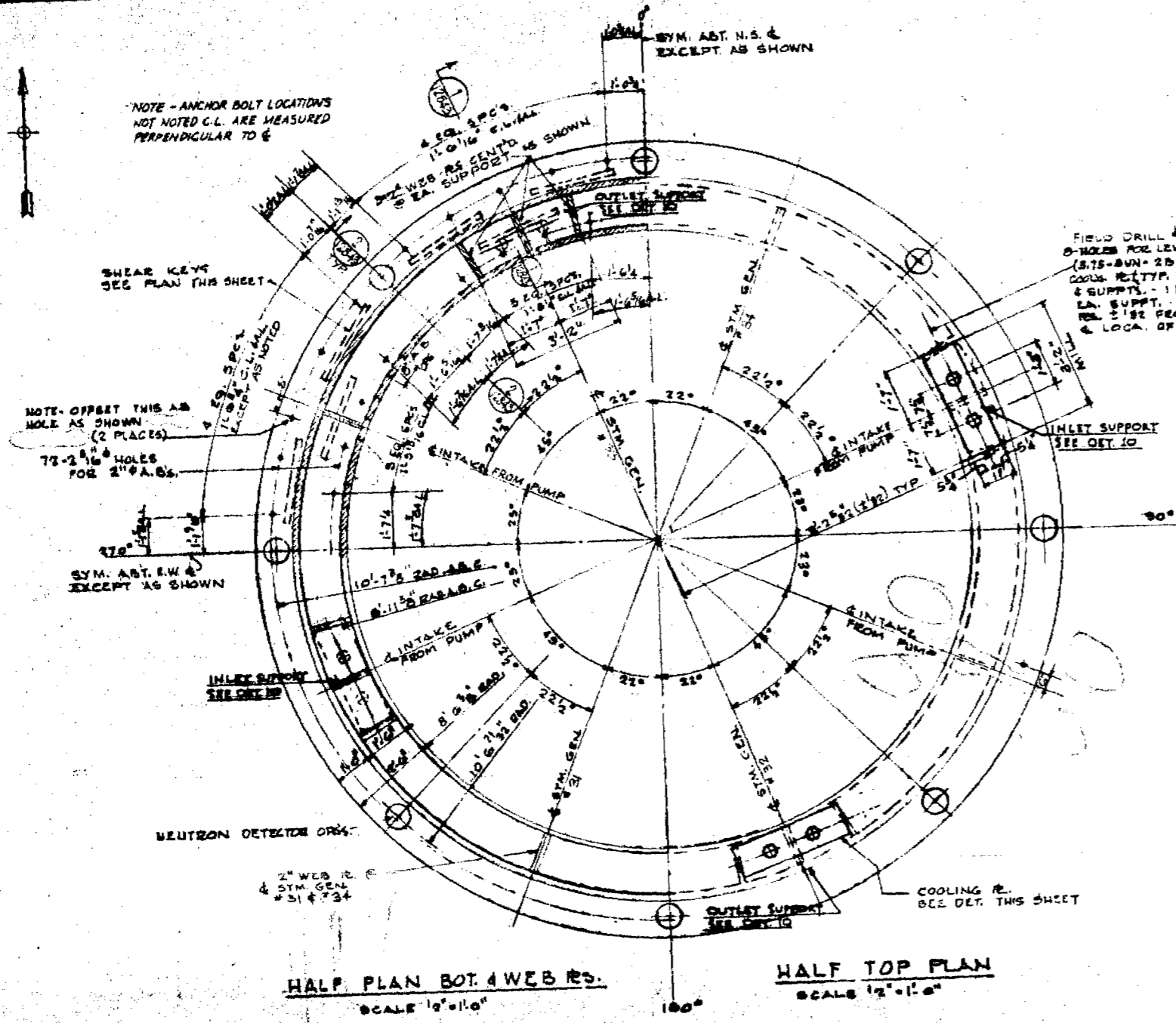


201570  
 EDISON POINT  
 INDIAN POINT



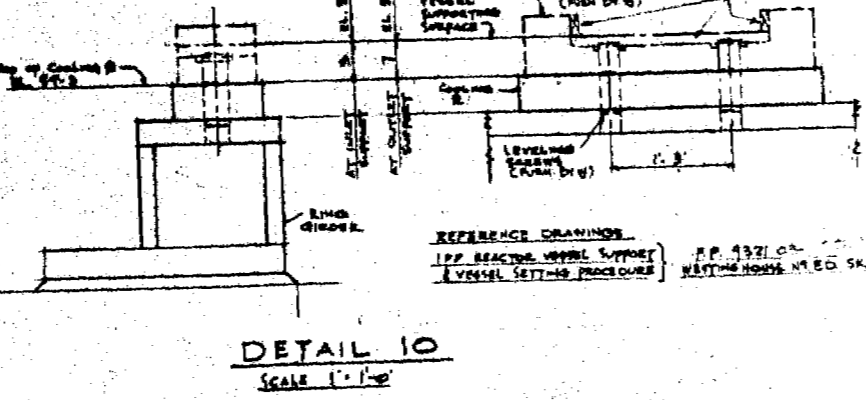
**LEGEND**  
 ABC-ANCHOR BOLT CIRCLE  
 CL-CHORD LENGTH  
 AL-ARMLength

**NOTES**  
 1. STEEL PLATE SHALL CONFORM TO ASTM SPEC'S FOR A-36 STEEL LATEST EDITION  
 2. WELDING SHALL CONFORM TO A.W.S. CODE LATEST EDITION FOR B-70 XX ELECTRODES  
 3. FOR FABRICATION & PAINTING REFER TO SPECIFICATION DD-02-1210  
 4. HYDRO TEST COOLING R. ASSEYS TO 1500 PSI BEFORE WELDING TO RING GARDEN.  
 5. DIMENSIONS 3/16 UNLESS OTHERWISE NOTED  
 6. STRESS RELIEVE ENTIRE RING GARDEN BEFORE FINAL MACHINING & WELDING OF COOLING PLG.

**REFERENCE DRAWINGS**  
 PR 3321-06 (GR.) IPE REACTOR VESSEL SUPPORTS.  
 PR 3321-05 (GR.) PRESS. VESSEL FINAL MACHINING  
 2221-15213 ANCHOR BOLT SETTING PLAN

COOLING R. END PLATES

SIZE	OVERALL LENGTH	QUANTITY
14"	3'	3
16"	21"	2
30"	45"	2
48"	27"	2



**POOR ORIGINAL**

WESTINGHOUSE ELECTRIC CORPORATION	
CONTAINMENT REACTOR VESSEL SUPPORT STEEL	
FOR CONSOLIDATED EDISON COMPANY INDIAN POINT GENERATING STATION UNIT NO. 2	
WESTINGHOUSE NO. 8321-F-12843-1	EDISON POINT NO. A201570

8111076602