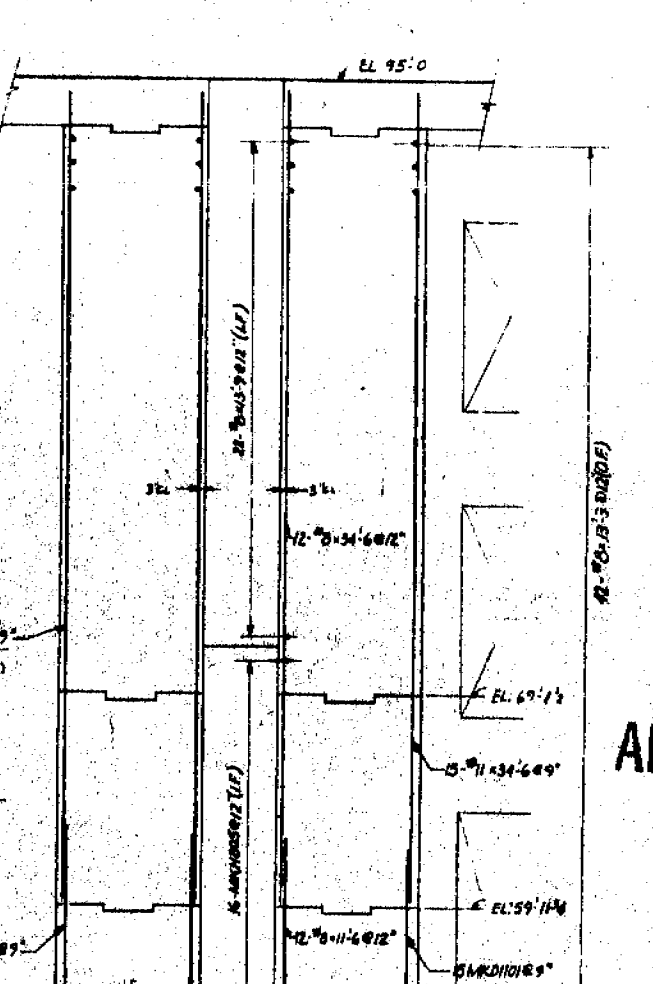
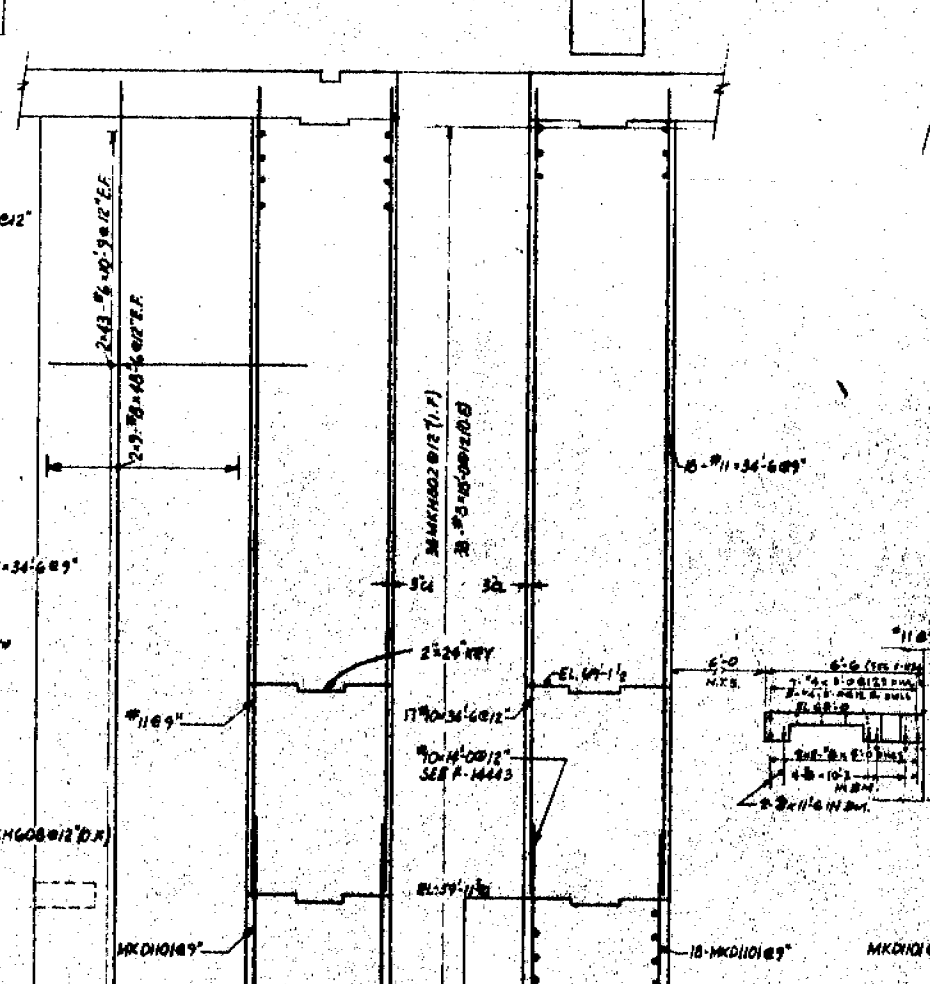
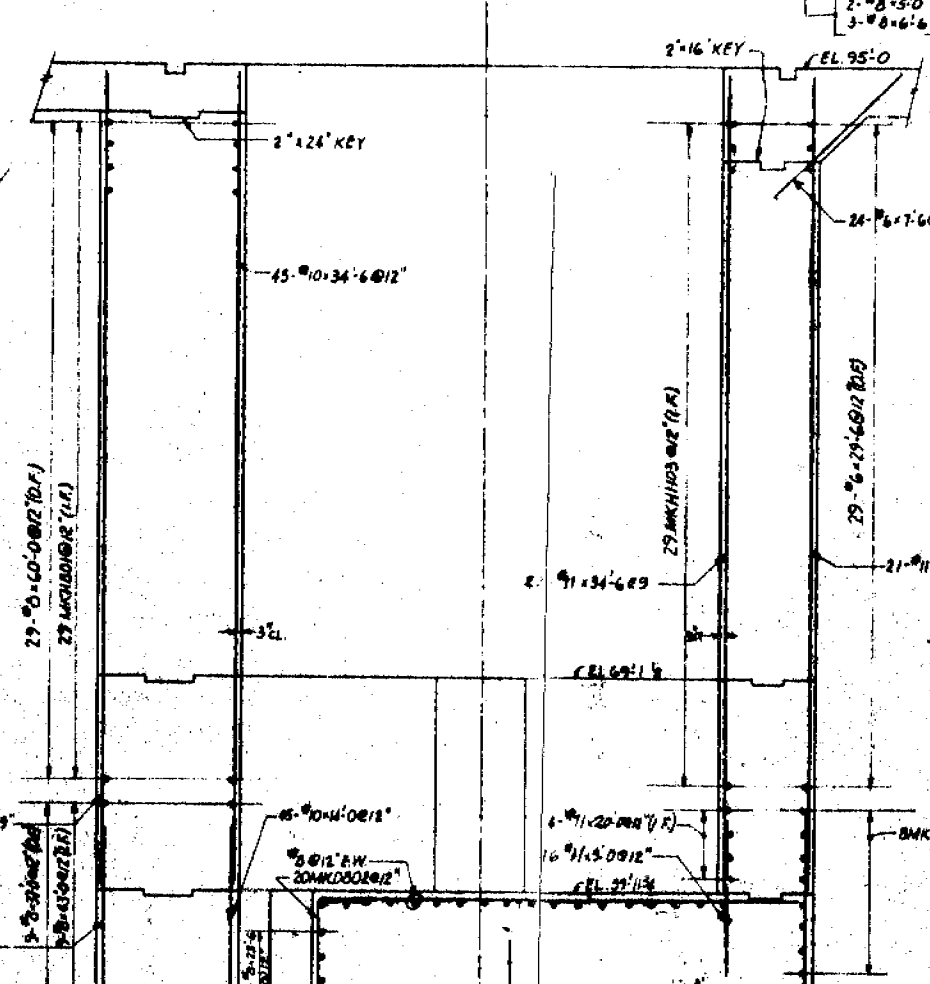
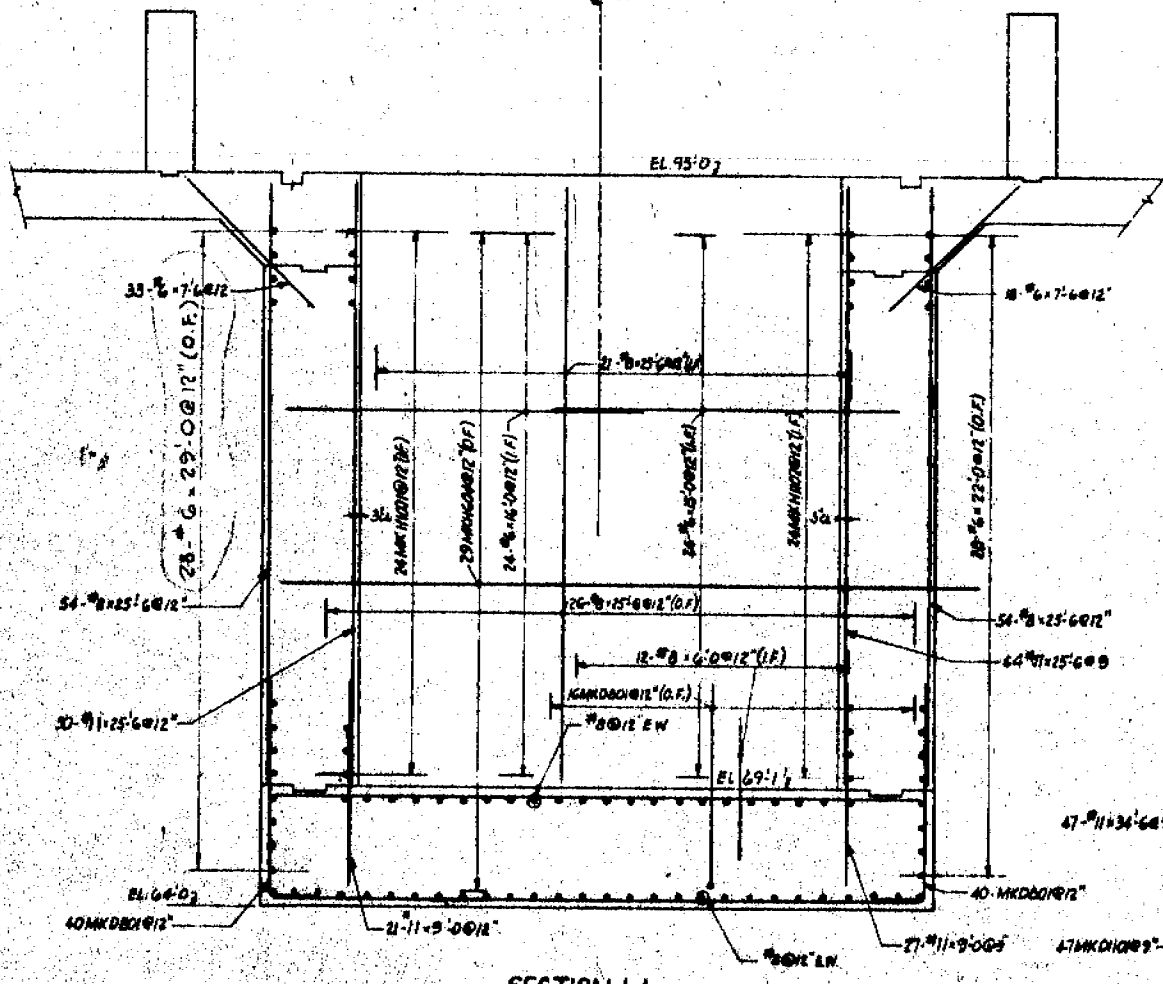
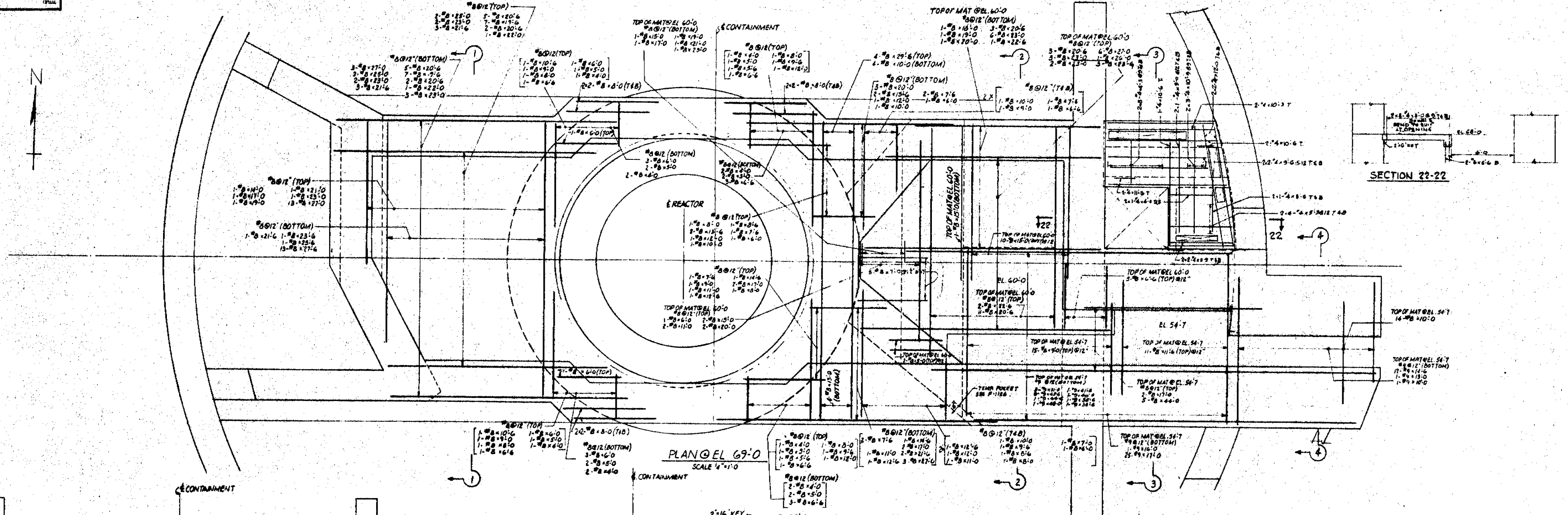


42102-V  
 8" ON LINE  
 UNLESS NOTED OTHERWISE



TERA  
 APERTURE  
 CARD

PRC  
 APERTURE  
 CARD

**POOR ORIGINAL**

WESTINGHOUSE ELECTRIC CORPORATION	
CONTAINMENT	
INTERIOR CONCRETE	
REINFORCING DETAILS - SHEET NO. 1	
FOR	
CONSOLIDATED EDISON COMPANY	
INDIAN POINT GENERATING STATION	
UNIT NO. 3	
U.S. PAT. OFF. NO.	CON. EN. CO. 3994, NO.
9321-F-11513-2	A 201444

8111070591