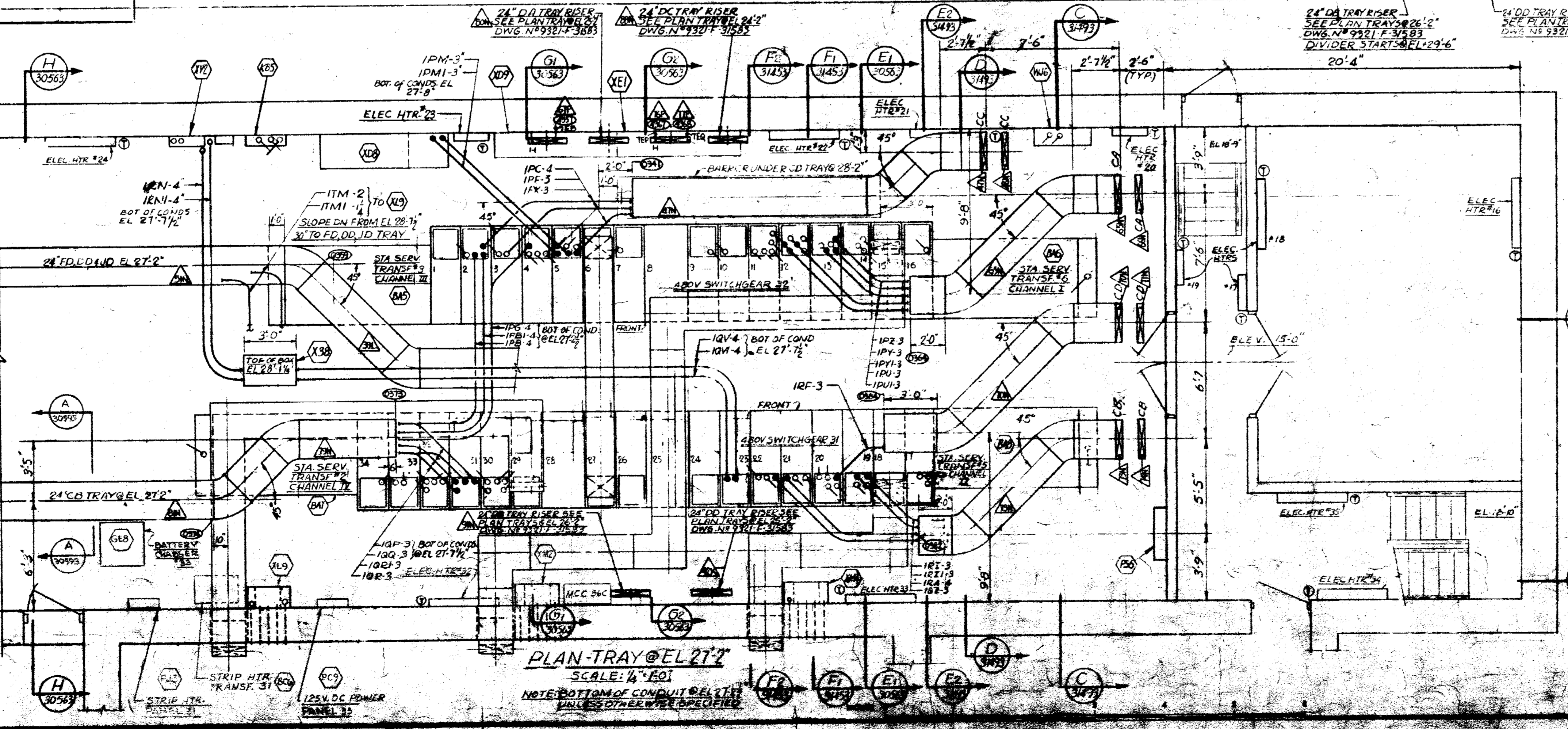


- NOTES**
- SEE DWG NO 9321-F-31483 FOR LIST OF REF. DWGS
 - FIRE DETECTORS TO BE MOUNTED ON CEILING & SO PLACED THAT NEON LIGHTS WILL BE VISIBLE FROM FLOOR.
 - ALL CONDUIT FOR FIRE DETECTION SYSTEM TO BE 3/4" RUN SO THAT FIRE DETECTORS MAY BE CONNECTED IN NUMERICAL SEQUENCE STARTING WITH FIRE DETECTOR #1. ALL WIRING TO BE 1/2" 14 AWG. SEE FP 9321-05-3706.



POOR ORIGINAL

TERA APERTURE CARD

SECTION 441 (30599)
LOOKING NORTH
SCALE: 1/4" = 1'-0"

APERTURE CARD A20112-0 CHARGING PUMPS #31, #32 & #33

WESTINGHOUSE ELECTRIC CORPORATION

CABLE TRAY PLAN
CONTROL BUILDING
SHEET NO. 2

FOR
CONSOLIDATED EDISON COMPANY
INDIAN POINT GENERATING STATION
DWG. NO. 3
811103D130

UNION ENGINEERS & CONSTRUCTORS, INC.
8321-F-00593-8 A202300

8	REVISED AS BUILT & FINAL ISSUE
7	REVISED FROM ITEM #8
6	REVISED FROM ITEM #8
5	REVISED FROM ITEM #8
4	REVISED FROM ITEM #8
3	REVISED FROM ITEM #8
2	REVISED FROM ITEM #8
1	REVISED FROM ITEM #8
0	REVISED FROM ITEM #8