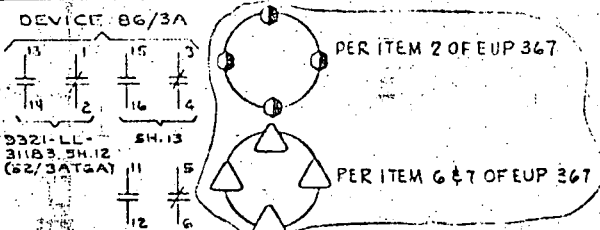
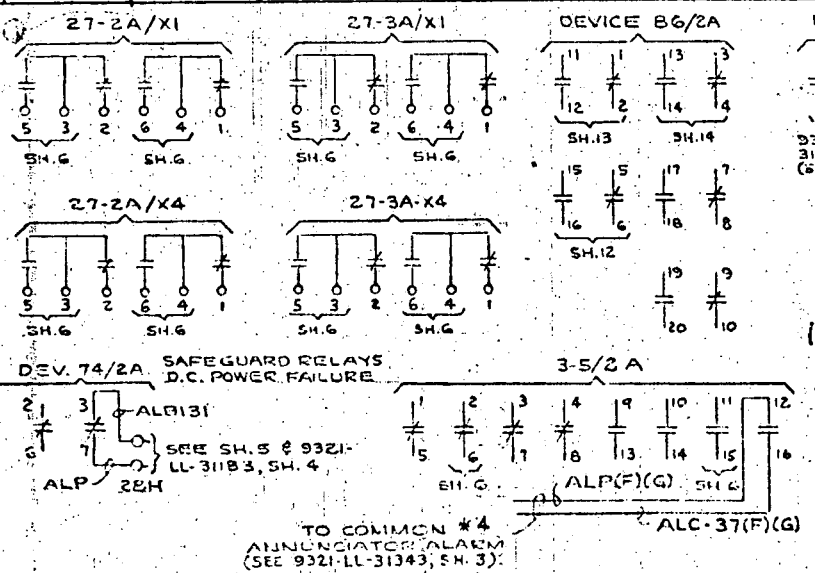


ECN 70088

RELAY CONTACT	SI/2A1 BFD-435	3-1/2A BFD-405	3-1/3A BFD-805	SI/2A BFD-1205	3-2/2A BFD-405	3-2/3A BFD-405	3-3/2A1 BFD-805	3-3/2A2 BFD-805	3-3/3A BFD-1205	27-2A/X3 BFD-445	27-2A/X2 BFD-1205	27-3A/X3 BFD-445	27-3A/X2 BFD-1205
1-1-5	52/SI2 Δ 29	52/SW2 Δ 42	52/CRF4 Δ 48	SPARE	52/CC2 Δ 45	52/SW5 Δ 34	EG1 START CT. 311B3, SH. 6	52/PUB2 Δ 49	52/FUT. Δ 87	b. SPARE	52/2AT3A SH. 13	52/AF1 311B3, SH. 11	52/3A 311B3 SH. 7
2-1-6	52/RHRI Δ 31	52/SI2 Δ 29	SPARE	INTERLOCK SH. 6	52/SW2 Δ 42	52/AF1 311B3, SH. 11	52/CC2 Δ 45	52/DI1 SH. 16	52/FUT. Δ 87	INTERLOCK SH. 6	52/EG1 SH. 14	INTERLOCK SH. 6	52/3A 311B3 SH. 7
3-1-7	b. SP	52/CRF2 Δ 78	SPARE	52/SW2 Δ 42	SPARE	BFP 32 START 311B3, SH. 5	SPARE	SPARE	52/FUT Δ 87	INTERLOCK SH. 6	52/MCC4 SH. 15	INTERLOCK SH. 6	52/CRF4 Δ 48
4-1-8	b. SP	52/CC2 Δ 45	52/SW5 Δ 34	SPARE	SPARE	SPARE	52/MCC1 SH. 17	52/MG1 Δ 25	52/DI2 311B3, SH. 8	b. SPARE	52/CC2 Δ 45	b. SPARE	52/SW5 Δ 34
17-1-21	SP	—	—	INTERLOCK SH. 6	—	—	—	—	52/MCC5 311B3, SH. 9	—	52/SW2 Δ 42	—	52/RHRI Δ 31
18-1-22	52/CC2 Δ 45	—	—	52/SW5 Δ 34	—	—	—	—	52/LT2 311B3, SH. 9	—	52-SI2 Δ 29	—	SPARE
19-1-23	SP	—	—	INTERLOCK SH. 6	—	—	—	—	52/MCC2 311B3, SH. 9	—	52/2A SH. 18	—	52/2AT3A SH. 13
20-1-24	SP	—	—	52/2AT5A SH. 12	—	—	—	—	52/PBUI Δ 39	—	52/2A SH. 18	—	52/2AT3A SH. 13
9-1-13	b. SP	—	52/RHRI Δ 31	52/3AT6A 311B3, SH. 12	—	—	52/MCC210 SH. 17	52/FUT Δ 87	—	52/2AT5A SH. 12	52/CRF2 Δ 78	52/AF1 311B3, SH. 11	52/3AT6A 311B3 SH. 12
10-1-14	b. SP	—	52/AF1 LL-311B3, SH. 11	52/MCC4C SH. 20	—	—	52/MCC3 SH. 17	52/FUT Δ 87	52/C2 Δ 72	52/2AT5A SH. 12	SPARE	INTERLOCK 31313, SH. 10	52/3AT6A 311B3 SH. 12
11-1-15	b. SP	—	SPARE	SPARE	—	—	52/LTIN SH. 17	52/FUT Δ 87	52/EXF1 311B3, SH. 10	INTERLOCK LL-31313, SH. 10	INTERLOCK SH. 6	INTERLOCK LL-31313, SH. 10	INTERLOCK SH. 6
12-1-16	b. SP	—	SPARE	SPARE	—	—	EG1 START CT. 311B3, SH. 6	52/FUT Δ 87	52/SW3 Δ 206	SPARE	SPARE	SPARE	SPARE



NOTES

- \* 1 - FOR TABULATED RELAY SCHEME SEE SH. 6
- \* 2 - b. INDICATES CONTACT NORMALLY CLOSED.
- \* 3 - Δ - INDICATES DWG. 5008971 (U.E.C. F. 9321-05; 3307)
- \* 4 - FOR CABLE SCHEMATIC SEE SH. 6A

NO.	DATE	DESCRIPTION	ENGR	SUP ENGR
6	11/72	DELETED FROM ALL OF CONTACT TABS OF RELAY 3-5/2A & REVD THE COLUMN OF RELAY SI/2A1		
5	11/72	REVISED PER ITEM 7 OF EUP 367 & ITEM 5 & 7 OF EUP 357 (EN 70088)		
4	7/57	REV. CABLE DESIGNATIONS ON DEV. 3-5/2A		
3	4/57	REVISED RELAY CONTACT NOS. ADDED NOTE 4, ENG RPT. CABLE LTRS.		
2	1/57	REVISED DEV. 3-5/2A		
1	1/57	REVISED RELAY SCHEMATIC		
0	4-56	FIRST ISSUE FOR CONSTRUCTION		

ENGINEER: *William P. Robinson*

STATE REG. NO. 10000 NO. 40000

UNITED ENGINEERS & CONSTRUCTORS INC.

BUS 2A AND 3A RELAY TABULATION

WESTINGHOUSE ELECTRIC CORPORATION  
FOR  
CONSOLIDATED EDISON COMPANY  
INDIAN POINT GENERATING STATION - UNIT NO. 3

SCHEMATIC DIAGRAM  
480V. SWITCHGEAR 31

SHEET NO. 4

U.E. & C. DWG. NO. 9321-LL-31173  
CON. ED. CO. DWG. NO. D202462

6246

8111030061

