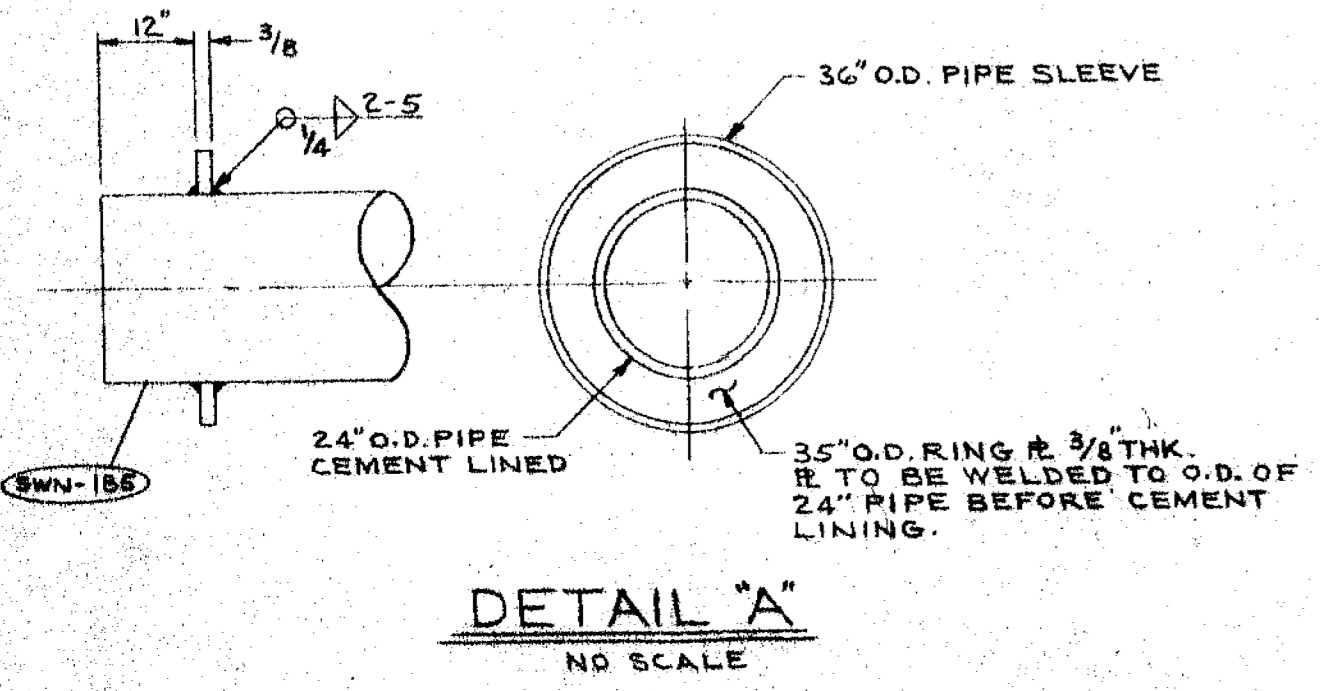
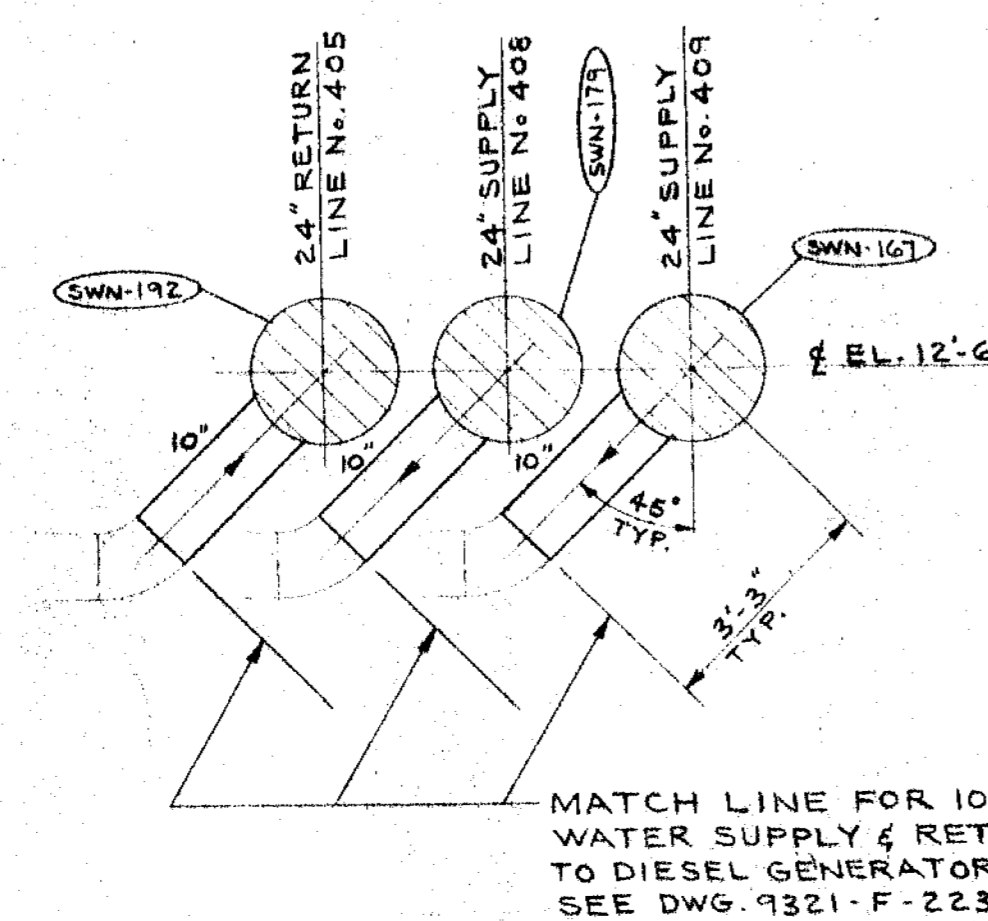


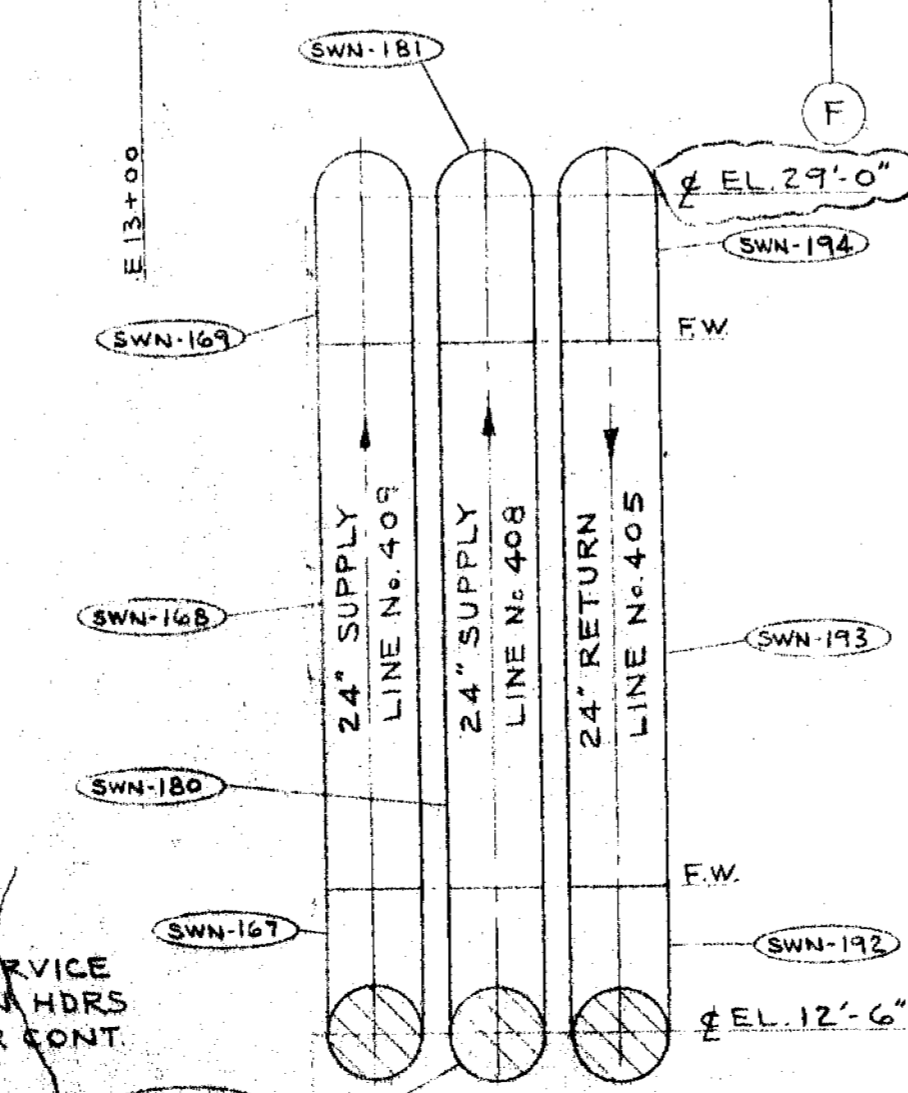
PLAN
 SCALE 1"=10'-0"



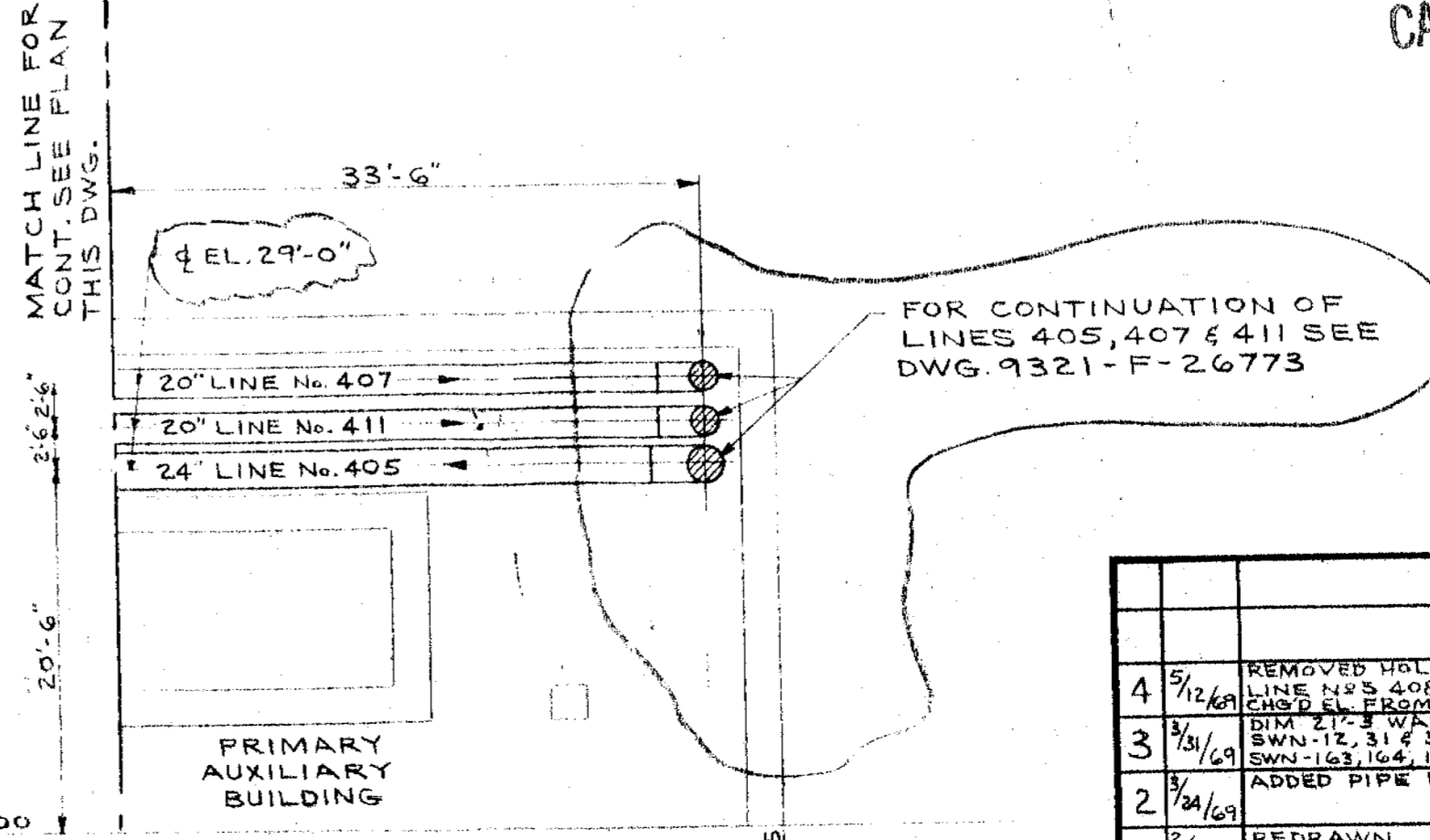
DETAIL "A"
 NO SCALE



SECTION "B-B"
 SCALE 3/8"=1'-0"



SECTION "C-C"
 SCALE 1/4"=1'-0"



PARTIAL PLAN
 SCALE 1"=10'-0"

NOTES
 1. ALL PIPING SHALL BE IN ACCORDANCE WITH U.E.C. SPEC. NO. 9321-01-248-35 & 9321-01-248-49.
 2. COATING AND WRAPPING OF ALL UNDERGROUND PIPING SHALL BE IN ACCORDANCE WITH U.E.C. SPEC. NO. 9321-01-248-35 SEC. 3, ITEM 2, PARAGRAPH 3.

POOR ORIGINAL
 REFERENCE DRAWINGS

- 9321-F-21073 INTAKE STRUCTURE SERVICE WATER PIPING
- F-21453 TURBINE BLDG. PIPING BELOW EL. 15'-0"
- F-22363 TRANSFORMER YARD COMPOSITE PIPING
- F-27013 SERVICE WATER PIPING IN YARD AREA SHT. No. 2
- F-26773 COMPOSITE PIPING IN TRENCHES SHT. No. 2

NO.	DATE	DESCRIPTION	ENGR.	SUP. ENGR.
1	1/25/68	REDRAWN	DHR	RFD
2	2/14/68	FIRST ISSUE FOR CONSTRUCTION	DHR	RFD
3	3/12/68	REMOVED HOLD, REVERSED LINE NO. 407 & 408, REPLACED SWN-112, 113 & 114 WITH SWN-112, 113 & 114. ADDED PIPE PIECE NOS.	DHR	RFD
4	5/12/68	REMOVED HOLD, REVERSED LINE NO. 407 & 408, REPLACED SWN-112, 113 & 114 WITH SWN-112, 113 & 114. ADDED PIPE PIECE NOS.	DHR	RFD

WESTINGHOUSE ELECTRIC CORPORATION

**SERVICE WATER PIPING
 IN YARD AREA
 PLANS - SHEET NO. 1**

FOR
CONSOLIDATED EDISON COMPANY
 INDIAN POINT GENERATING STATION
 UNIT NO. 3

STATE REG. N.Y. No. 42886
 UNITED ENGINEERS & CONSTRUCTORS INC.

O.E.C. DWG. NO. **9321-F-27003-4**
 CON. ED. CO. DWG. NO. **A202212**