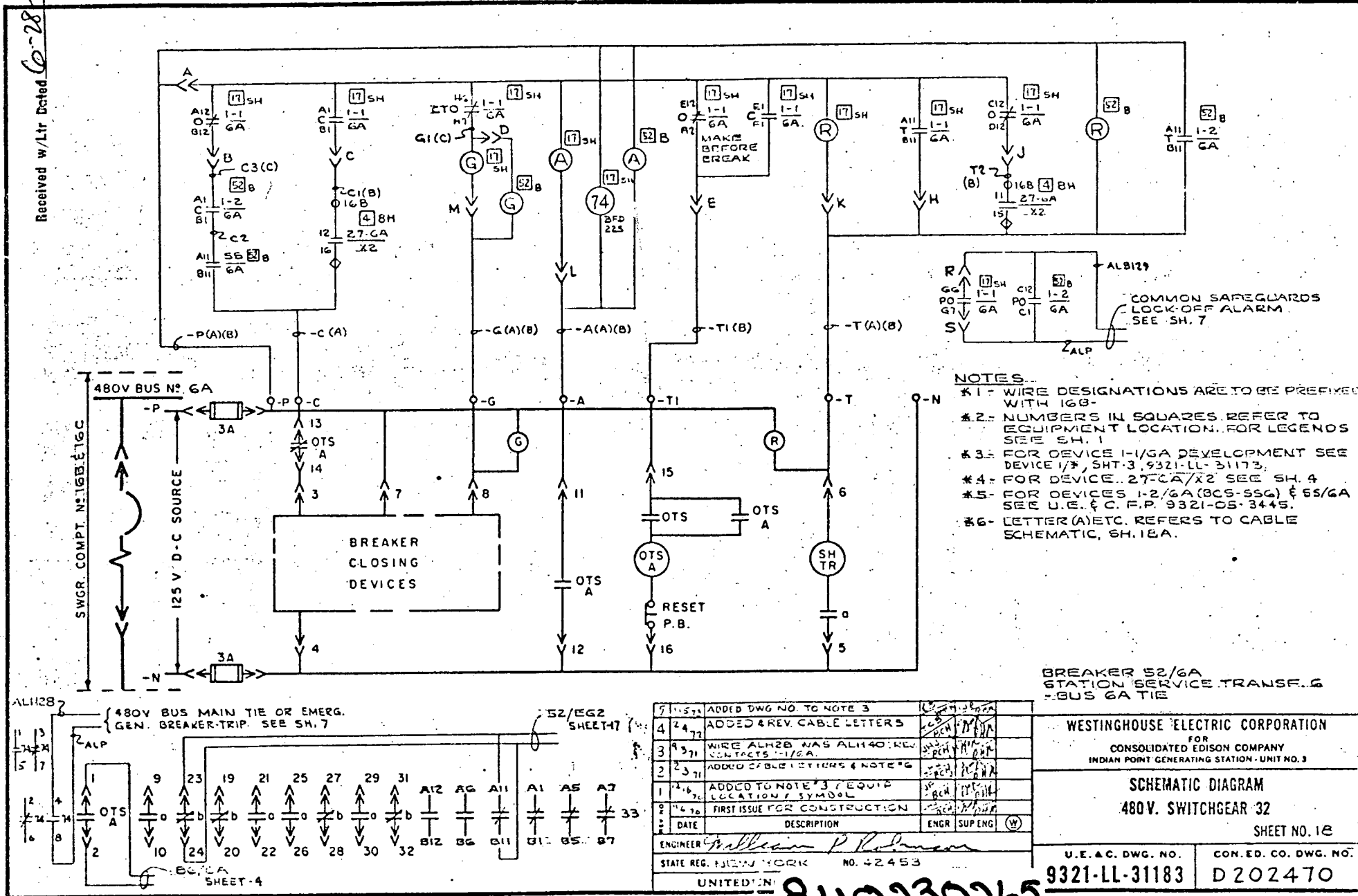


File No.

Received

Received w/Ltr Dated 6-28-73



- NOTES**
- \*1- WIRE DESIGNATIONS ARE TO BE PREFIXED WITH 16B-
  - \*2- NUMBERS IN SQUARES REFER TO EQUIPMENT LOCATION. FOR LEGENDS SEE SH. 1
  - \*3- FOR DEVICE 1-1/GA DEVELOPMENT SEE DEVICE 1/3, SHT-3, 9321-LL-31173.
  - \*4- FOR DEVICE 27-GA/X2 SEE SH. 4
  - \*5- FOR DEVICES 1-2/GA (BCS-55G) & 55/GA SEE U.E. & C. F.P. 9321-05-3445.
  - \*6- LETTER (A) ETC. REFERS TO CABLE SCHEMATIC, SH. 18A.

BREAKER 52/6A  
STATION SERVICE TRANSF. 6  
BUS 6A TIE

WESTINGHOUSE ELECTRIC CORPORATION  
FOR  
CONSOLIDATED EDISON COMPANY  
INDIAN POINT GENERATING STATION - UNIT NO. 3

SCHEMATIC DIAGRAM  
480V. SWITCHGEAR 32

SHEET NO. 1E

U.E. & C. DWG. NO. 9321-LL-31183  
CON. ED. CO. DWG. NO. D 202470

|                     |      |   |         |
|---------------------|------|---|---------|
| 7                   | 1-57 | ADDED DWG NO. TO NOTE 3                     |         |
| 4                   | 2-72 | ADDED & REV. CABLE LETTERS                  |         |
| 3                   | 9-71 | WIRE ALH2B WAS ALH40: REV. CONTACTS 1-1/GA. |         |
| 2                   | 3-71 | ADDED CABLE LETTERS & NOTE 6                |         |
| 1                   | 4-71 | ADDED TO NOTE 3 EQUIP. LOCATION SYMBOL      |         |
| 9                   | 4-70 | FIRST ISSUE FOR CONSTRUCTION                |         |
| 8                   |      | DATE  |         |
| 7                   |      | DESCRIPTION                                 |         |
| 6                   |      | ENGR  | SUP ENG |
| ENGINEER            |      | <i>William P. Robinson</i>                  |         |
| STATE REG. NEW YORK |      | NO. 42453                                   |         |
| UNITED STATES       |      | 8110230265                                  |         |

