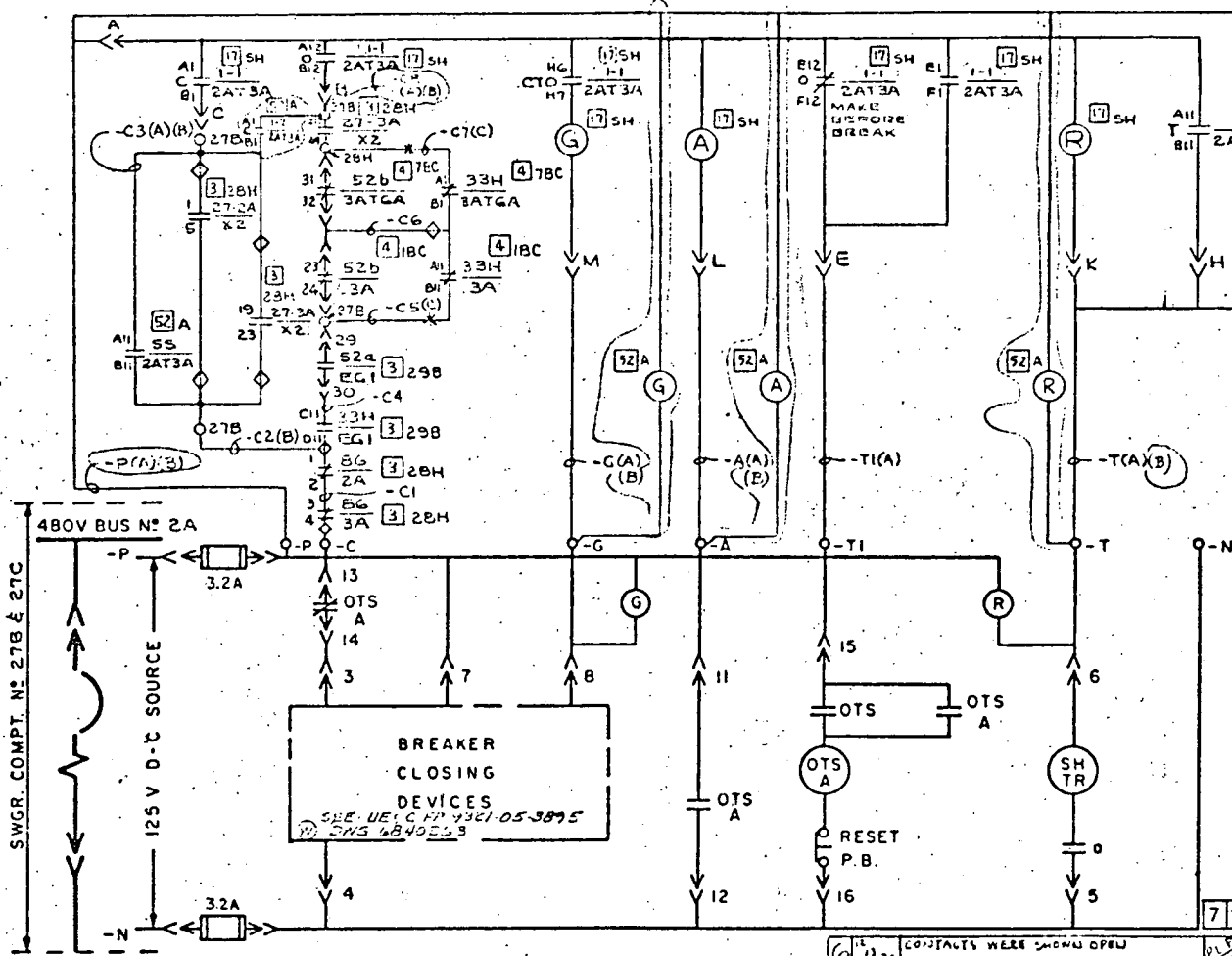


Reciprocity File Co.

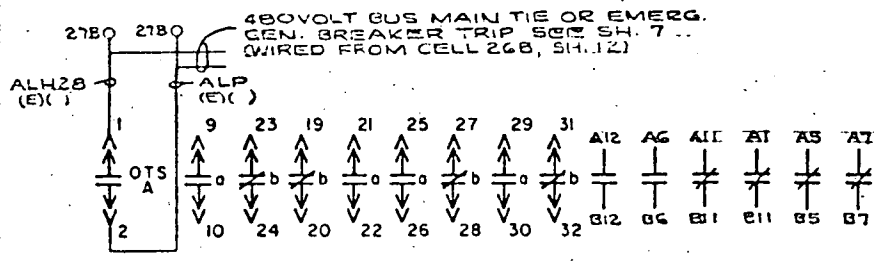
Received w/Ltr Dated 6-28-13



NOTES

- *1 - WIRE DESIGNATIONS ARE TO BE PREFIXED WITH 27B-
- *2 - NUMBERS IN SQUARES REFER TO EQUIPMENT LOCATION... FOR LEGENDS SEE SH. 1
- *3 - FOR DEVICE 11/2AT3A DEVELOPMENT SEE DEVICE 1/*, SH. 3
- *4 - FOR DEVICES 27-2A/X2, 27-3A/X2, B6/2A & B6/3A SEE SH. 6
- *5 - FOR DEVICES 52b/3ATGA & 52H/3ATGA SEE 9321-LL-311B3, SH. 12
- *6 - FOR DEVICES 52b/3A & 52H/3A SEE 9321-LL-311B3, SH. 14
- *7 - FOR DEVICES 52A/EG1 & 52H/EG1 SEE SH. 14
- *8 - FOR DEVICE 55/2AT3A SEE U.R. & C. P. 9321-C5-3445
- *9 - LETTER (A) ETC. REFERS TO CABLE SCHEMATIC, SH. 13A

SAFEGUARDS EQUIPMENT LOCKED OPEN SEE SH. 7



6	10/21	CONTACTS WERE SHOWN OPEN		
5	9/22	DELETE CABLE (D)		
4	24/12	REVISED FUSE RATINGS, TERM. 27B WAS 28H, ADDED CELL NOS.		
3	13/21	REVISIONS MADE TO SCHEMATIC AND WIRING		
2	13/21	ADDED CABLE LETTERS & NOTE 9 REVISED NOTE 9 OTHER MODIFICATIONS		
1	11/26	REVISED NOTE 9 ADDED WIRE SYMBOLS & CELL NOS.		
8	11/26	FIRST ISSUE FOR CONSTRUCTION		
	DATE	DESCRIPTION	ENGR	SUP ENGR
				(W)
ENGINEER		William D. Johnson		
STATE REG. NEW YORK		NO. 42423		
UNITED ENI		8110230243		

BREAKER 52/2AT3A BUS 2A-3A TIE

WESTINGHOUSE ELECTRIC CORPORATION
FOR
CONSOLIDATED EDISON COMPANY
INDIAN POINT GENERATING STATION - UNIT NO. 3

SCHEMATIC DIAGRAM
480 V. SWITCHGEAR 31

SHEET NO. 13

U.E. & C. DWG. NO. 9321-LL-31173
CON. ED. CO. DWG. NO. D202469