

Table with columns: ITEM NO., FIRST LINE, SIZE, SECOND LINE, SIZE, THIRD LINE, SIZE, FIG. NO., NO. REQ.

Table with columns: ITEM NO., FIRST LINE, SIZE, SECOND LINE, SIZE, THIRD LINE, SIZE, FIG. NO., NO. REQ.

Table with columns: ITEM NO., FIRST LINE, SIZE, SECOND LINE, SIZE, THIRD LINE, SIZE, FIG. NO., NO. REQ.

Table with columns: ITEM NO., FIRST LINE, SIZE, SECOND LINE, SIZE, THIRD LINE, SIZE, FIG. NO., NO. REQ.

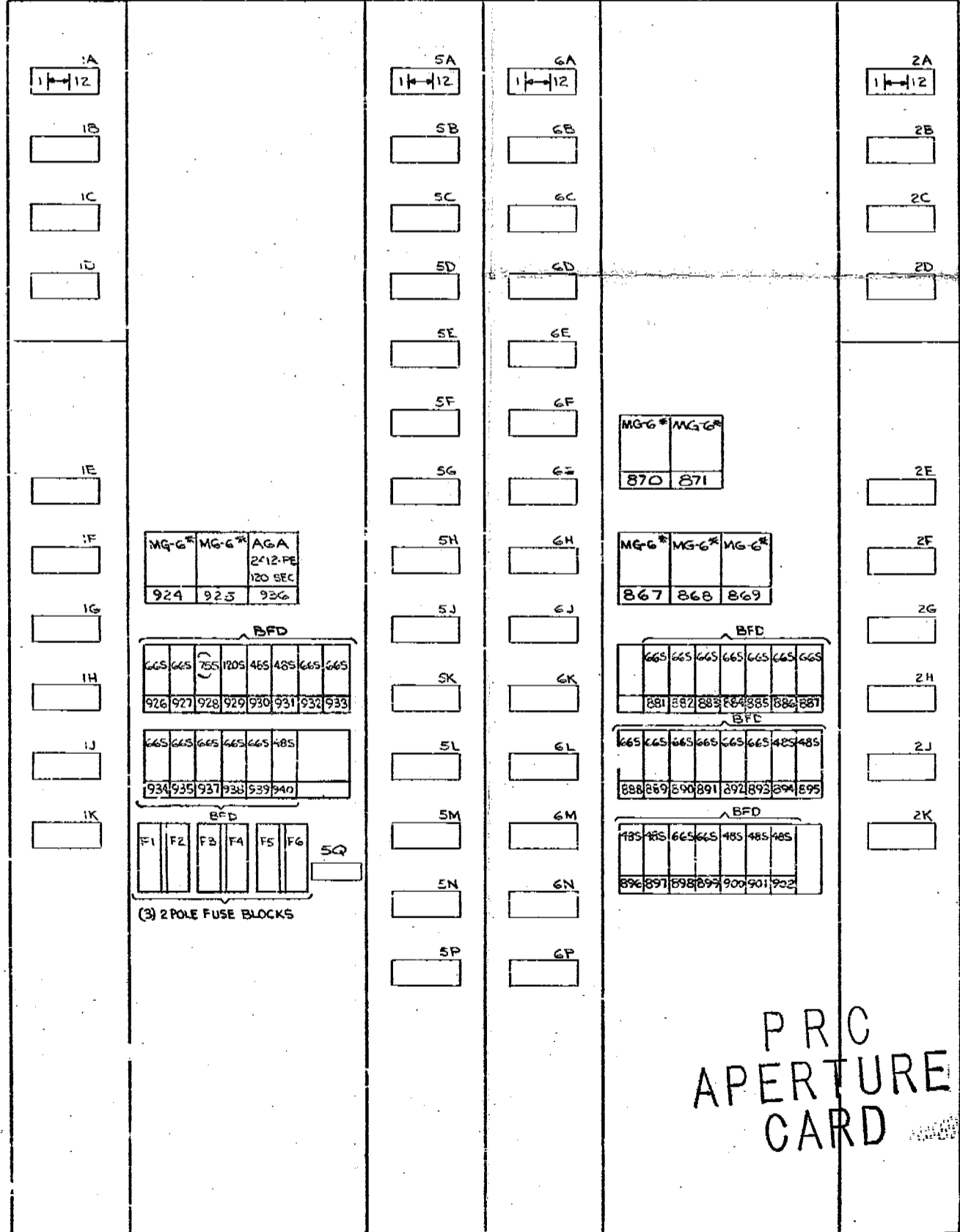
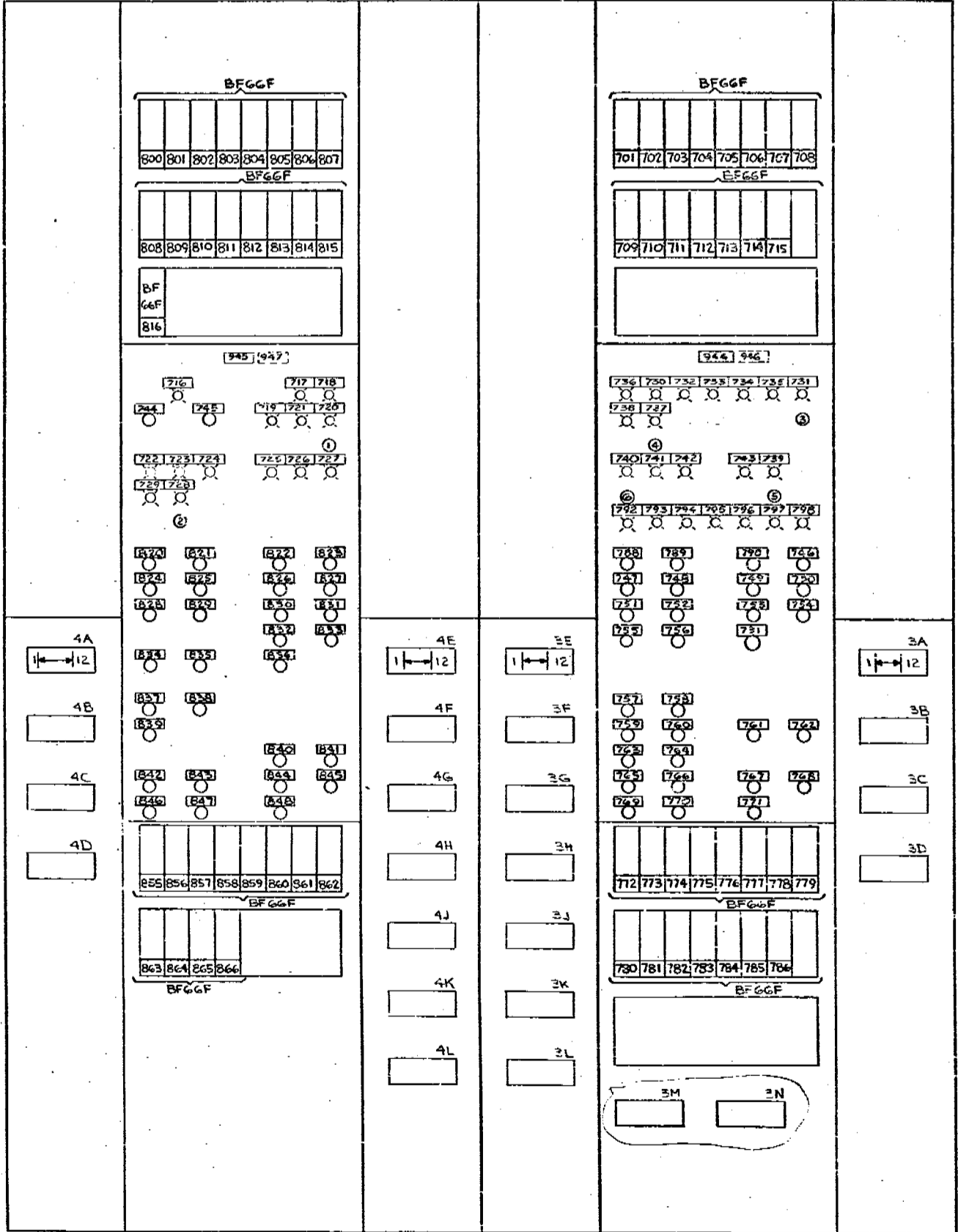
Regulatory File Cy. Received w/ Ltr Dated 6-28-73

UNIT NO. G4(G6) FRONT

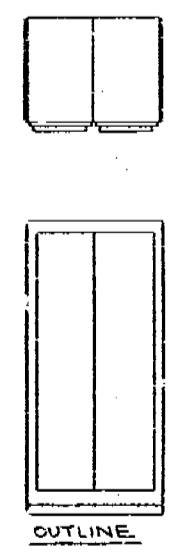
UNIT NO. G3(G5) FRONT

UNIT NO. G3(G5) REAR

UNIT NO. G4(G6) REAR



- RESET PUSHBUTTON PANEL LOCATION
(1) PB/STR1 (STR2)
(2) PB/CBTR (CBTR2)
(3) PB/SITR (SITR2)
(4) PB/VTRI (VTR2)
(5) PB/CATR (CATR2)
(6) PB/RTTI (RTT2)



PRC APERTURE CARD

Table with columns: ITEM NO., FIRST LINE, SIZE, SECOND LINE, SIZE, THIRD LINE, SIZE, FIG. NO., NO. REQ.

NOTE: ALL BFD RELAY COILS MUST OPERATE IN RANGE OF 100VOLTS TO 140VOLTS DC (COIL STYLE #503C428G21)

REVISIONS, DEVELOPED FRONT VIEW, DEVELOPED REAR VIEW, etc.

POOR ORIGINAL

TERA APERTURE CARD

Table with columns: DATE, DRAWN, CHECKED, etc.

8110230227