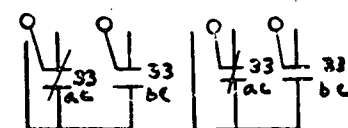


FIG. 24

VALVES SHOWN IN FULL OPEN POSITION

NOTES:

1. WIRE DESIGNATIONS ARE TO BE PREFIXED WITH VALVE NO.



EXTRA CONTACTS SUPPLIED WITH EACH VALVE

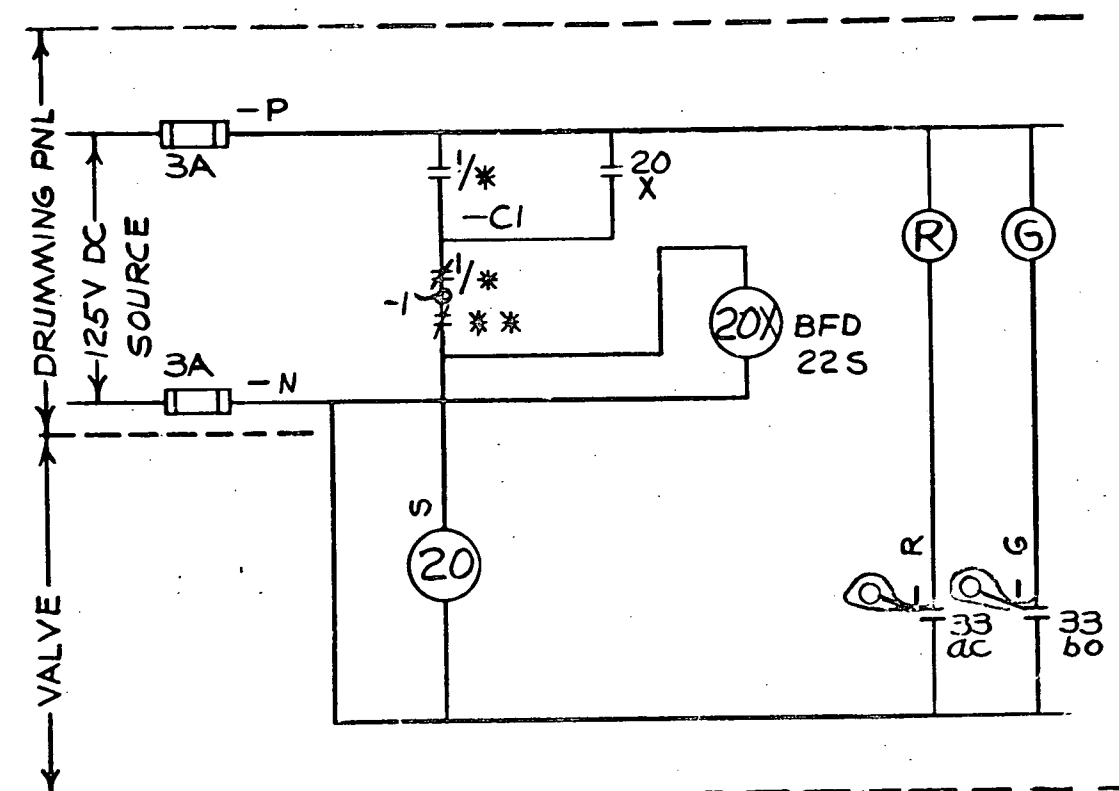


FIG. 25

P R C
APERTURE
CARD

TERA
APERTURE
CARD

SOLENOID & PILOT SOLENOID OPERATED AIR
DIAPHRAM VALVES.

ECN-5011		SO. INT-385		Westinghouse Electric Corporation		TITLE: CONSOLIDATED EDISON CO.	
DATE: 5-1-79		DRAWN: 4/17/70		INDIAN POINT STATION UNIT N ^o 3		ELEMENTARY WIRING DIA REMOTE OPER. VALVE	
M. HABERMAN		9-8-69		J. H. H. H.		500B971	
2		1		SUB		SHEET-124	
ATOMIC POWER DIV.,				PITTSBURGH, PA., U.S.A.			

8110230145