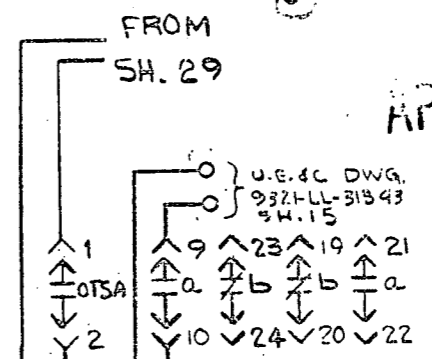
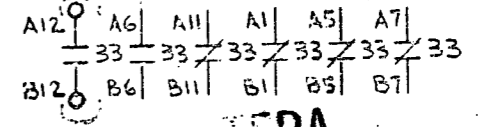
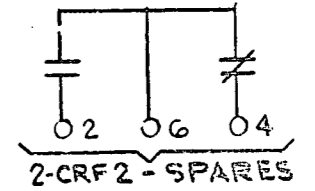
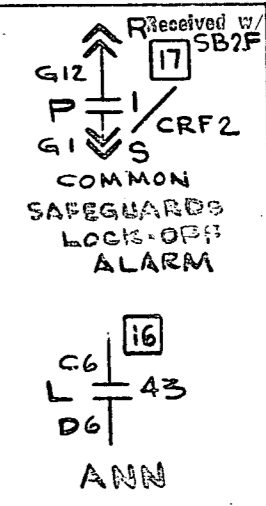
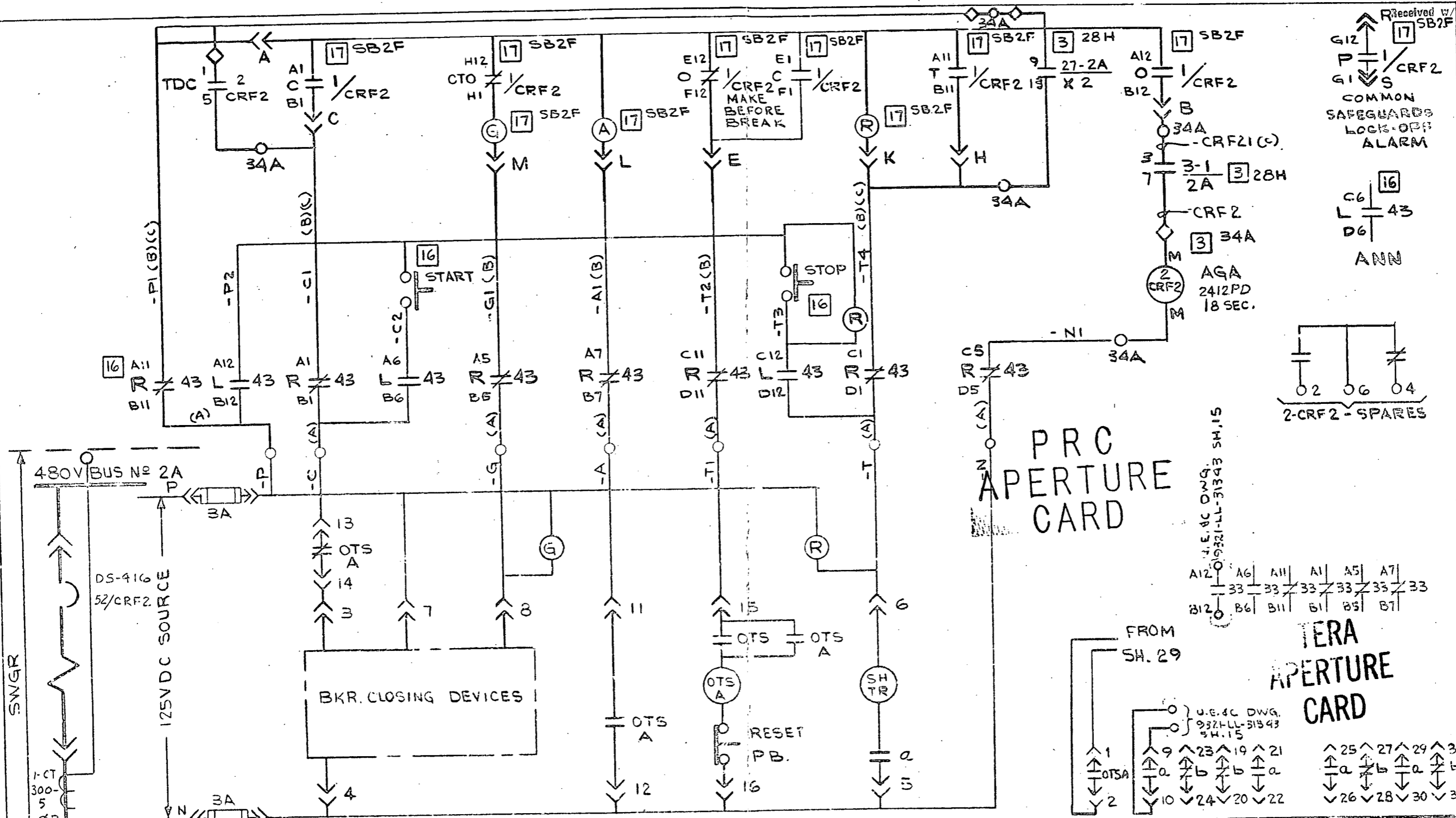


6-28-77



225 CRF2-UNIT 34D

- NOTES:
1. WIRE DESIG. PREFIXED WITH 34D
  2. 1/CRF2 SW. DEV. SH. 9
  3. 43 SW. DEV. SH. 13
  4.  $\diamond$  SHOP WIRED
  5. LETTER (A) ETC. REFERS TO CABLE SCHEMATIC 9321-LL-31173 SH. 49 A.

|   |  |   |  |                      |
|---|--|---|--|----------------------|
| ECN-9678<br>W.C.D. 3-7-73<br>W.C.D. 3-14-73<br>W.C.D. 3-14-73 | ECN-8051<br>S.G. 5-15-71<br>S.G. 5-15-71<br>S.G. 5-15-71 | ECN-7161<br>M.E.H. 3-2-71<br>M.E.H. 3-4-71<br>M.E.H. 3-4-71 | ECN-6851<br>J.A. 12-5-70<br>J.A. 12-5-70<br>J.A. 12-5-70 | S.O. INT.-385<br>SUB |
| 5   | 4  | 3   | 2  |                      |

|                                   |         |                            |         |
|-----------------------------------|---------|----------------------------|---------|
| Westinghouse Electric Corporation |         |                            |         |
| TITLE: CONSOLIDATED EDISON CO.    |         |                            |         |
| INDIAN POINT STATION - UNIT NO. 3 |         |                            |         |
| ELEMENTARY WIRING DIAG.           |         | CONTAINMENT RECIRC. FAN 32 |         |
| WM SOLES                          | 10/5/70 | 10-27-70                   | 500B971 |
| SHEET-78                          |         |                            |         |
| NUCLEAR ENERGY SYSTEMS            |         | PITTSBURGH, PA., U.S.A.    |         |

811023.0096