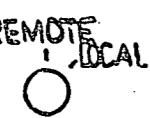
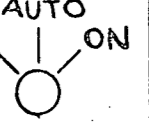


**TRANSFER SWITCH**  
 REMOTE LOCAL  
  
 43-USED ON SERVICE WATER PUMPS, CONTAINMENT RECIRCULATION FANS, & PRESSURIZER HEATER BACKUP GROUP #31

CONTACT	POSITION	
	R	L
A11-B11	X	
A12-B12		X
A1-B1	X	
A5-B5	X	
A6-B6		X
A7-B7	X	
C11-D11	X	
C12-D12		X
C1-D1	X	
C5-D5	X	
C6-D6		X
C7-D7	X	

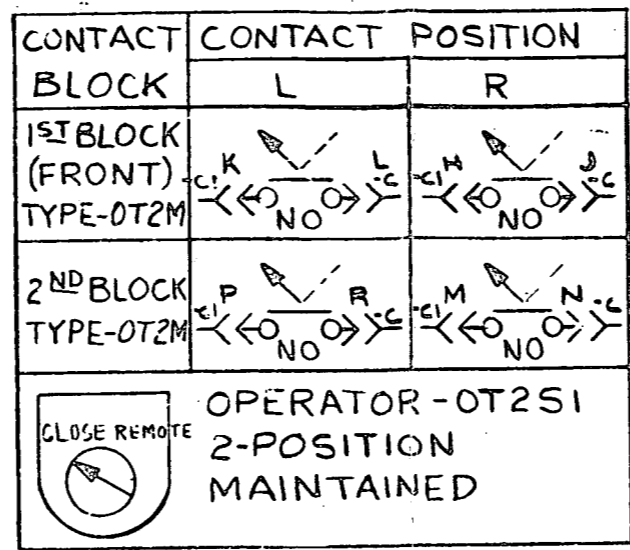
X-INDICATES CONTACTS CLOSED IN POSITION SHOWN.

TYPE-"W2" MAINTAINED

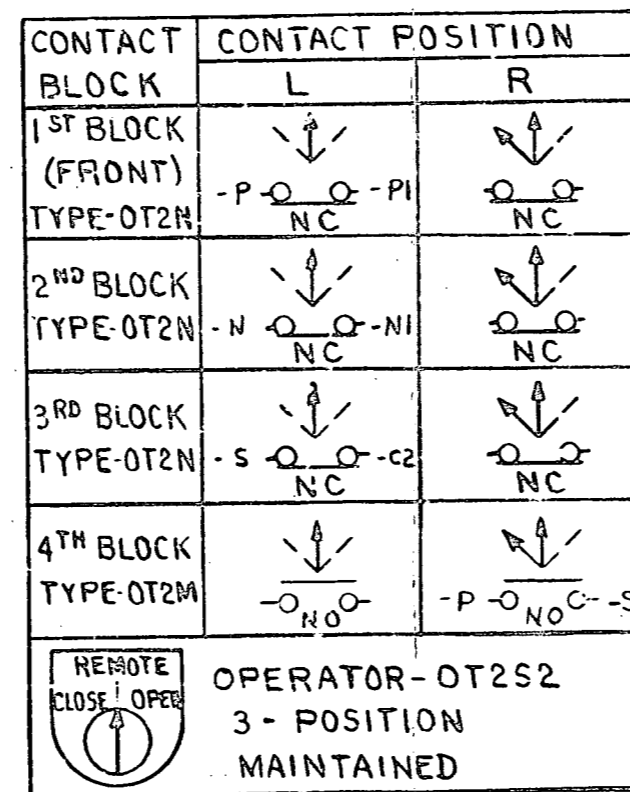
**AUTO OFF ON**  
  
 1/PBU1, PBU2, PBU3  
 X INDICATES CONTACTS CLOSED IN POS. SHOWN

CONTACT	POSITION				
	OFF	-	AUTO	-	ON
A11-B11	X				
A12-B12			X		
A1-B1					X
A5-B5	X				
A6-B6			X		
A7-B7					X
C11-D11	X	X			
C12-D12		X	X	X	
C1-D1				X	X
C5-D5	X	X			
C6-D6		X	X	X	
C7-D7				X	X

TYPE "W2" CS S# (MAINTAINED)



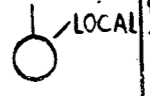
DEV.-S



DEV.-U

DEV. S (COMMON SW) PIN-VALVE WIRING

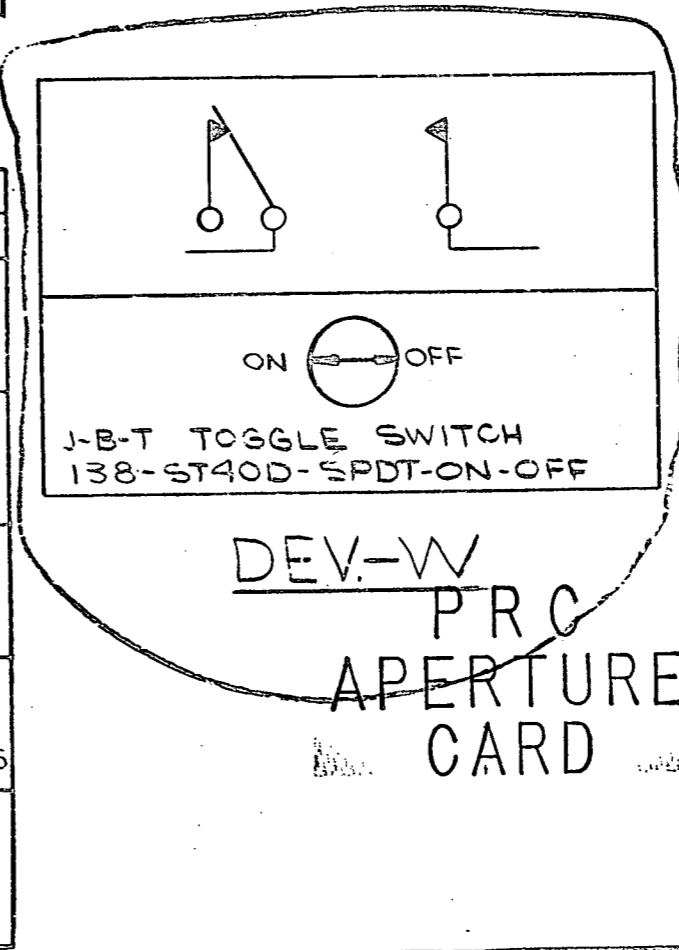
PIN NO.	CB. SW. ITEM	CW. SW. ITEM	CB. SW. ITEM	CB. SW. ITEM
K-L	V956A	V956B	V1702	V1705
H-J	V956C	V956D	V1723	V1728
P-R	V956E	V956F	V1786	V1787
M-N	V956G	V956H	-	-

**TRANSFER SWITCH REMOTE LOCAL**  
  
 43-1 USED ON CHARGING PUMP BORIC ACID TRANSFER PUMPS.

**CONTACT POSITION X-INDICATE CONTACTS CLOSED IN POSITION SHOWN**

CONTACT	POSITION	
	R	L
A11-B11		X
A12-B12	X	
A1-B1		X
A5-B5		X
A6-B6	X	
A7-B7		X
C11-D11	X	
C12-D12		X
C1-D1	X	
C5-D5	X	
C6-D6		X
C7-D7	X	

TYPE "W2" MAINTAINED S# 505AG21601



ECON-7161 1-5-71 3-31-71 4-2-71		S.O. INT-385		Westinghouse Electric Corporation	
SUB		SUB		TITLE: CONSOLIDATED EDISON CO.	
SUB		SUB		INDIAN POINT STATION UNIT NO.3	
SUB		SUB		ELEM. WIRING DIA. SWITCH DEVELOPMENT	
SUB		SUB		R.W. KEMERER 5/13/69 7/11/69 8/11/69	
SUB		SUB		500B971	
SUB		SUB		SHEET 13	
SUB		SUB		ATOMIC POWER DIV., PITTSBURGH, PA., U.S.A.	

8110230046