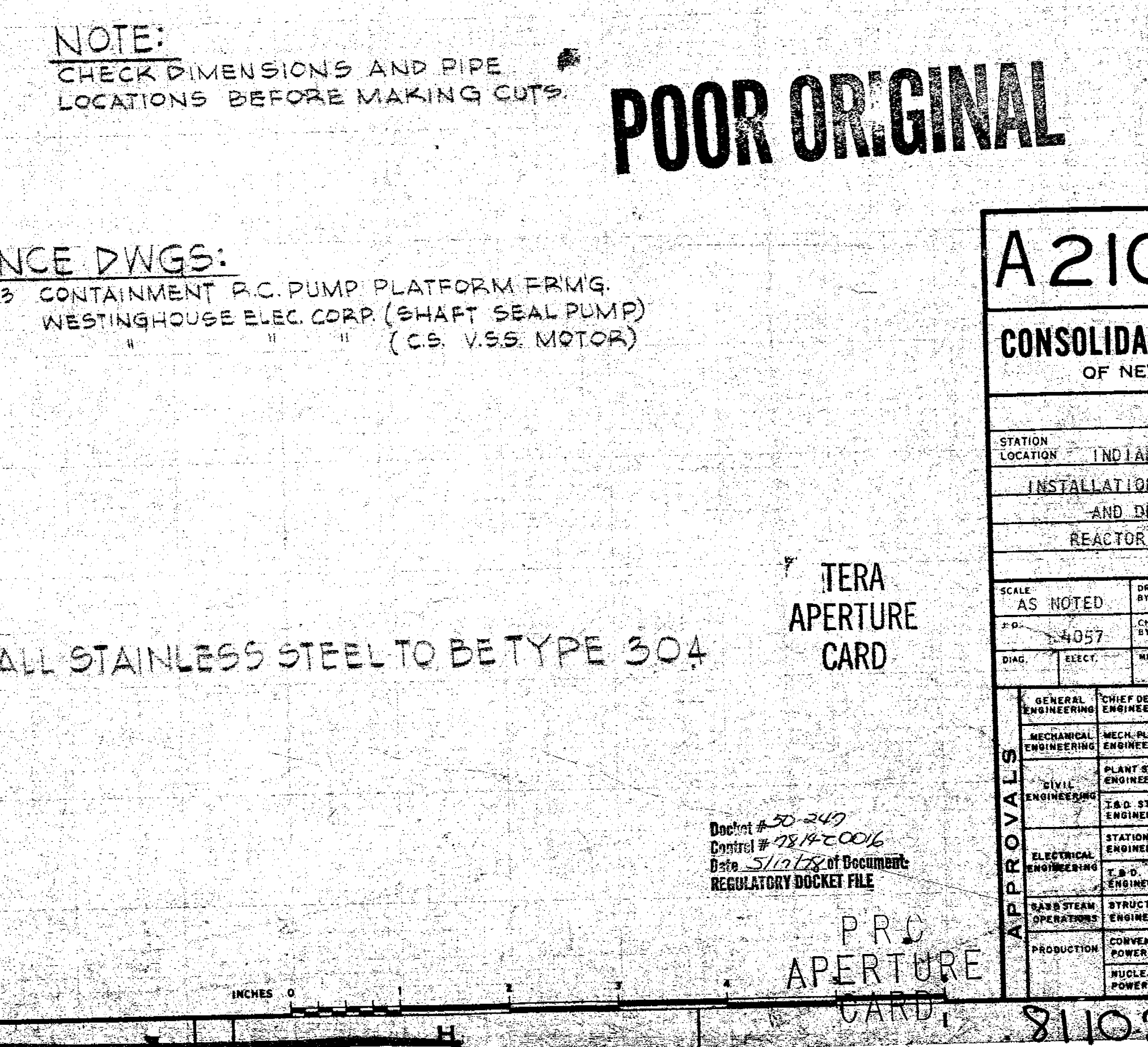
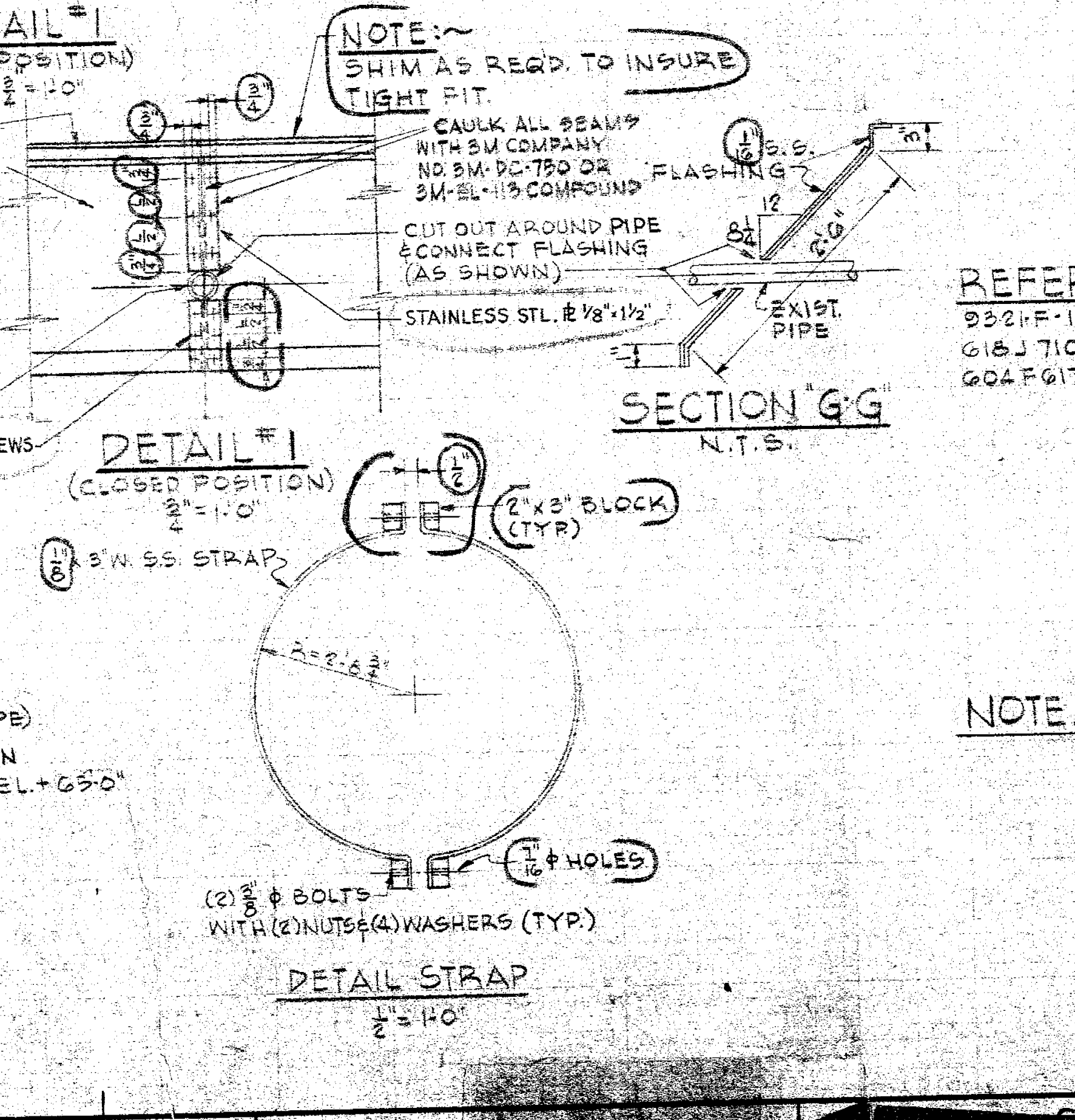
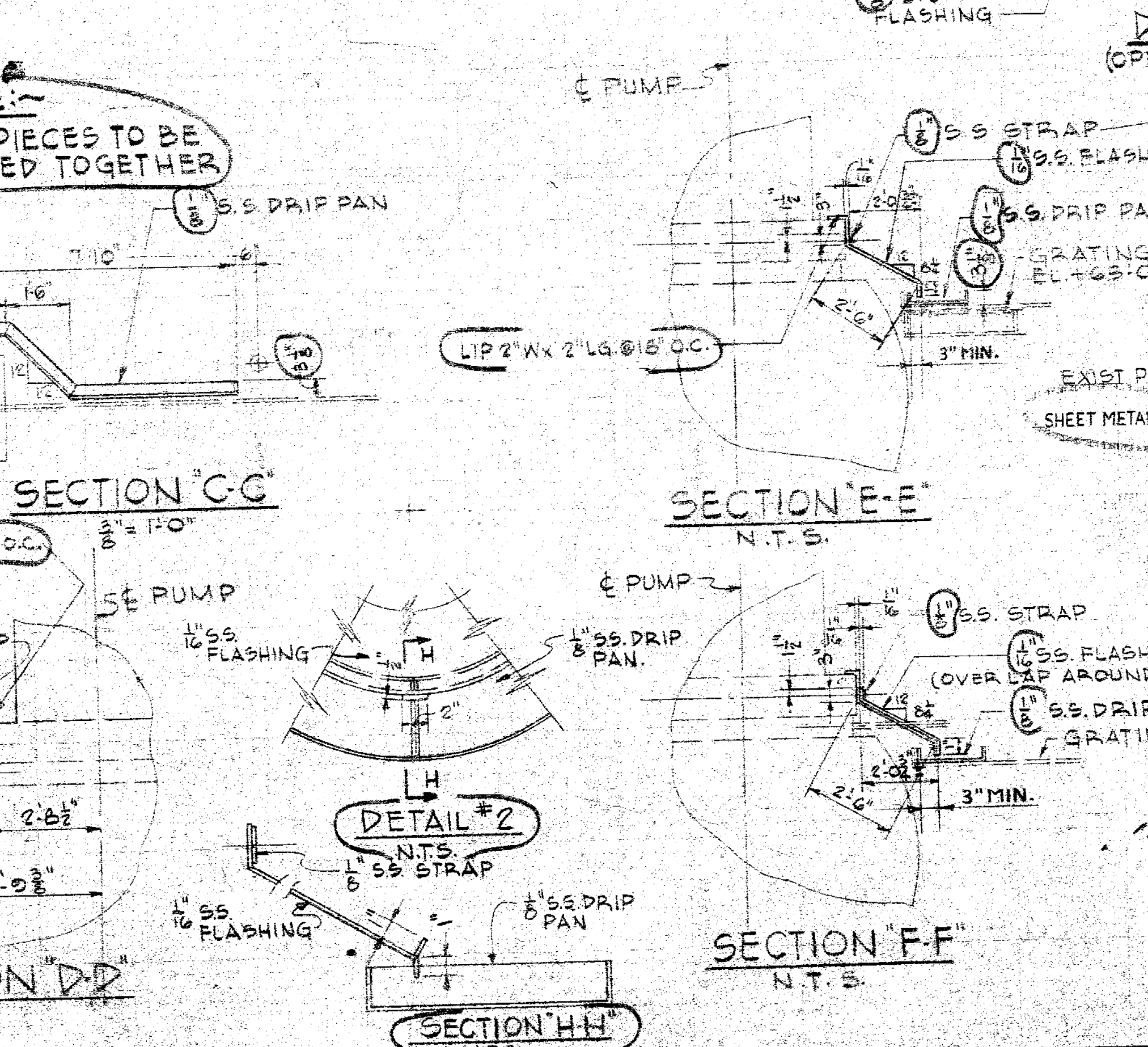
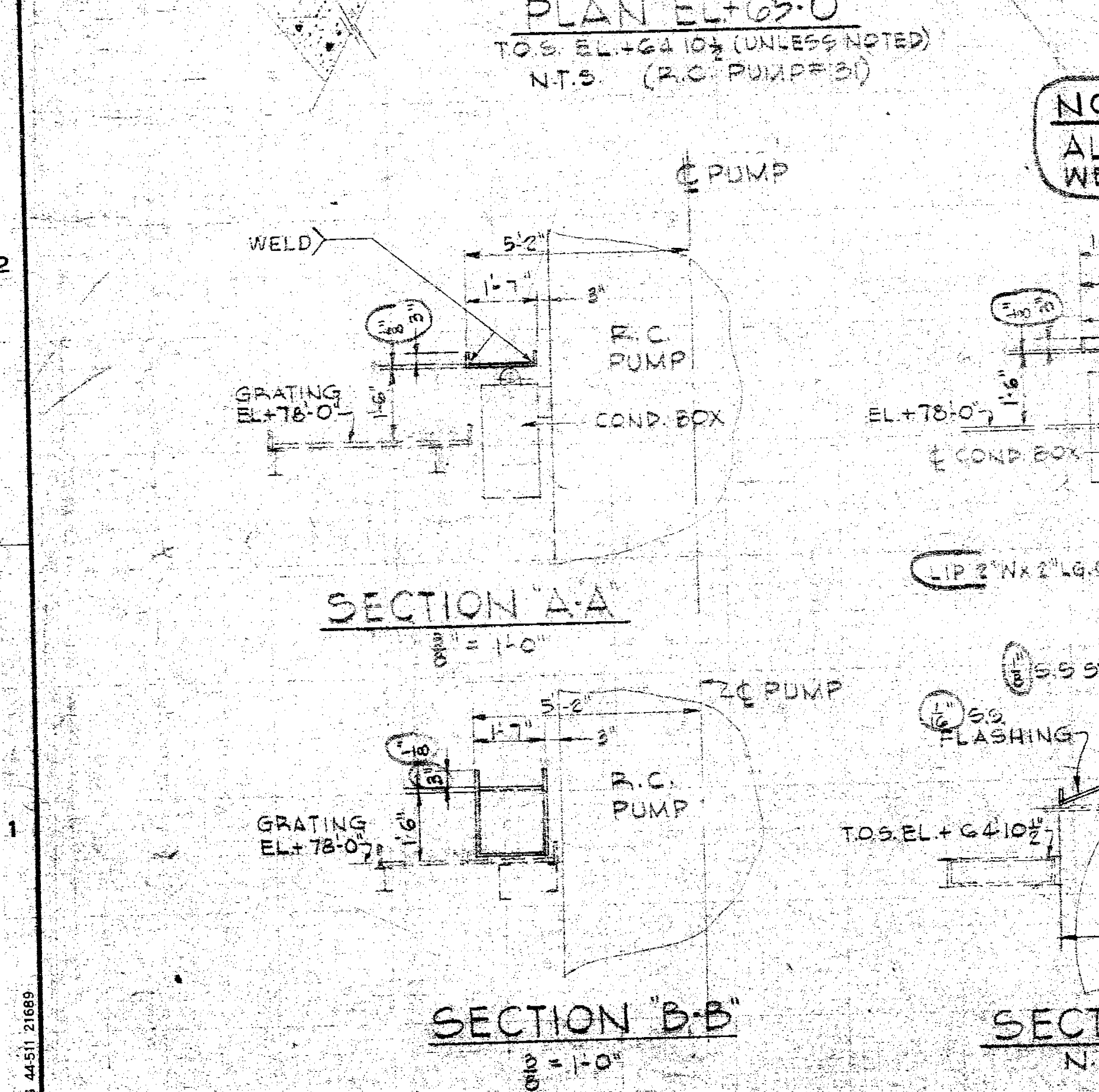
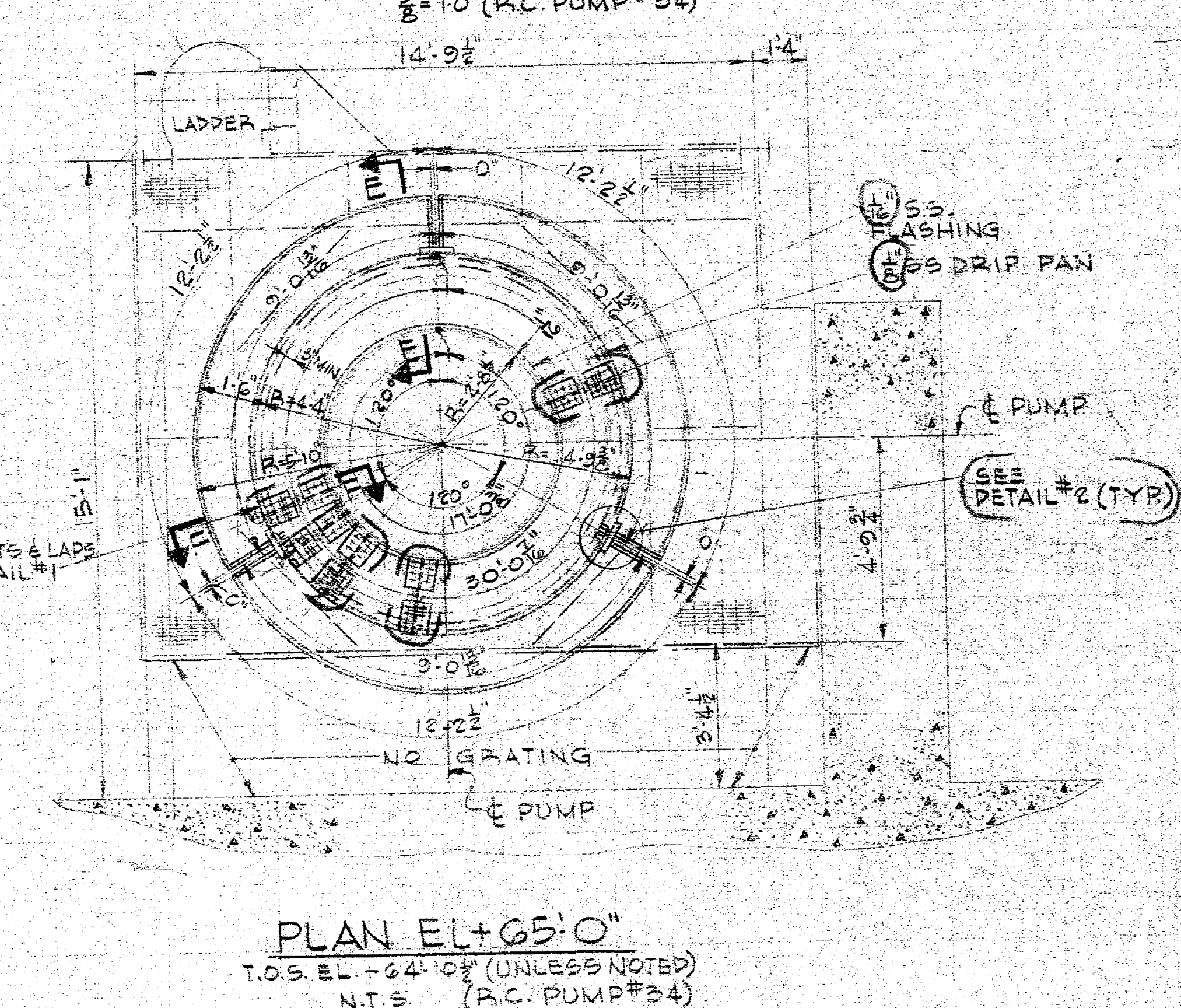
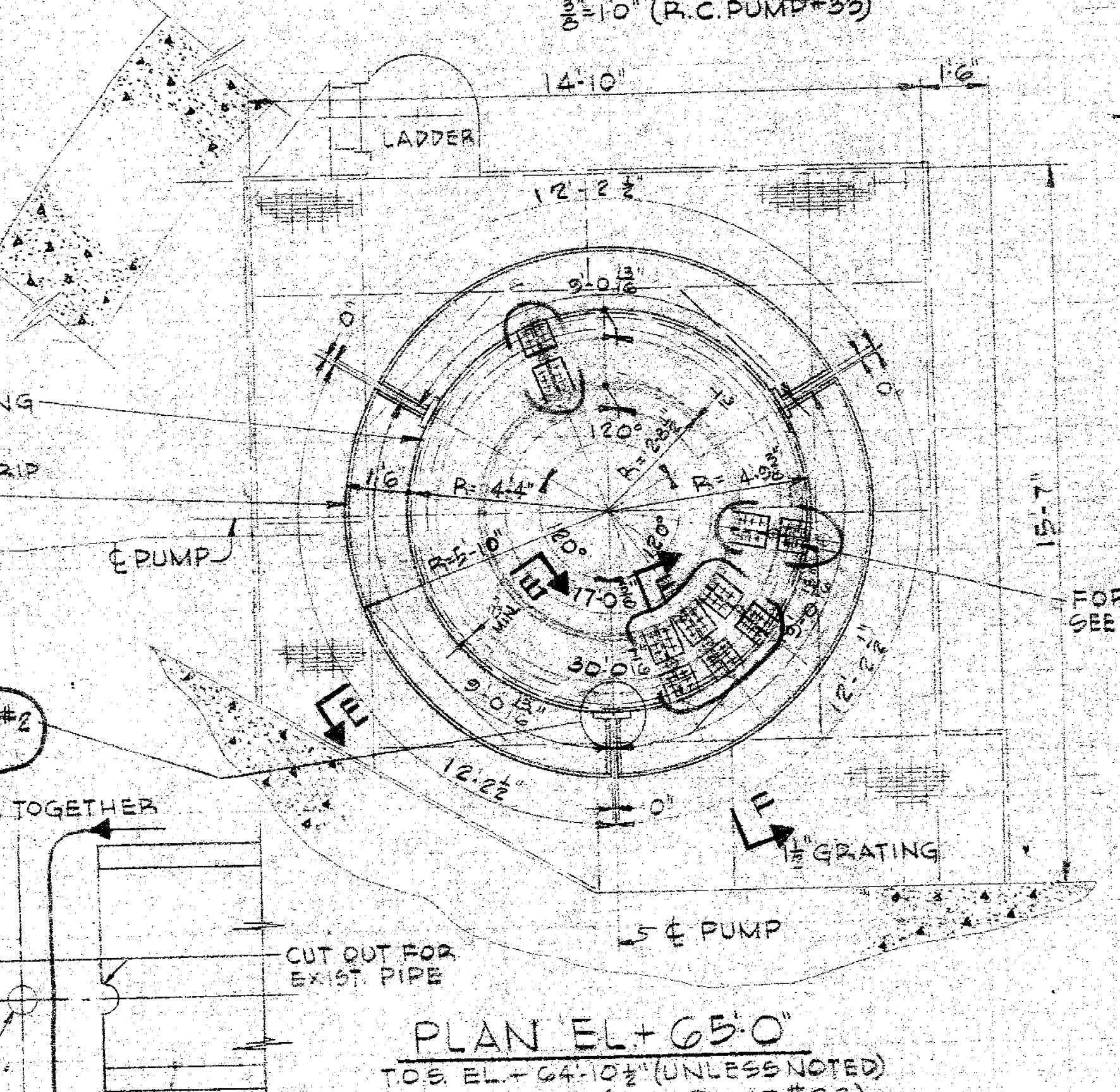
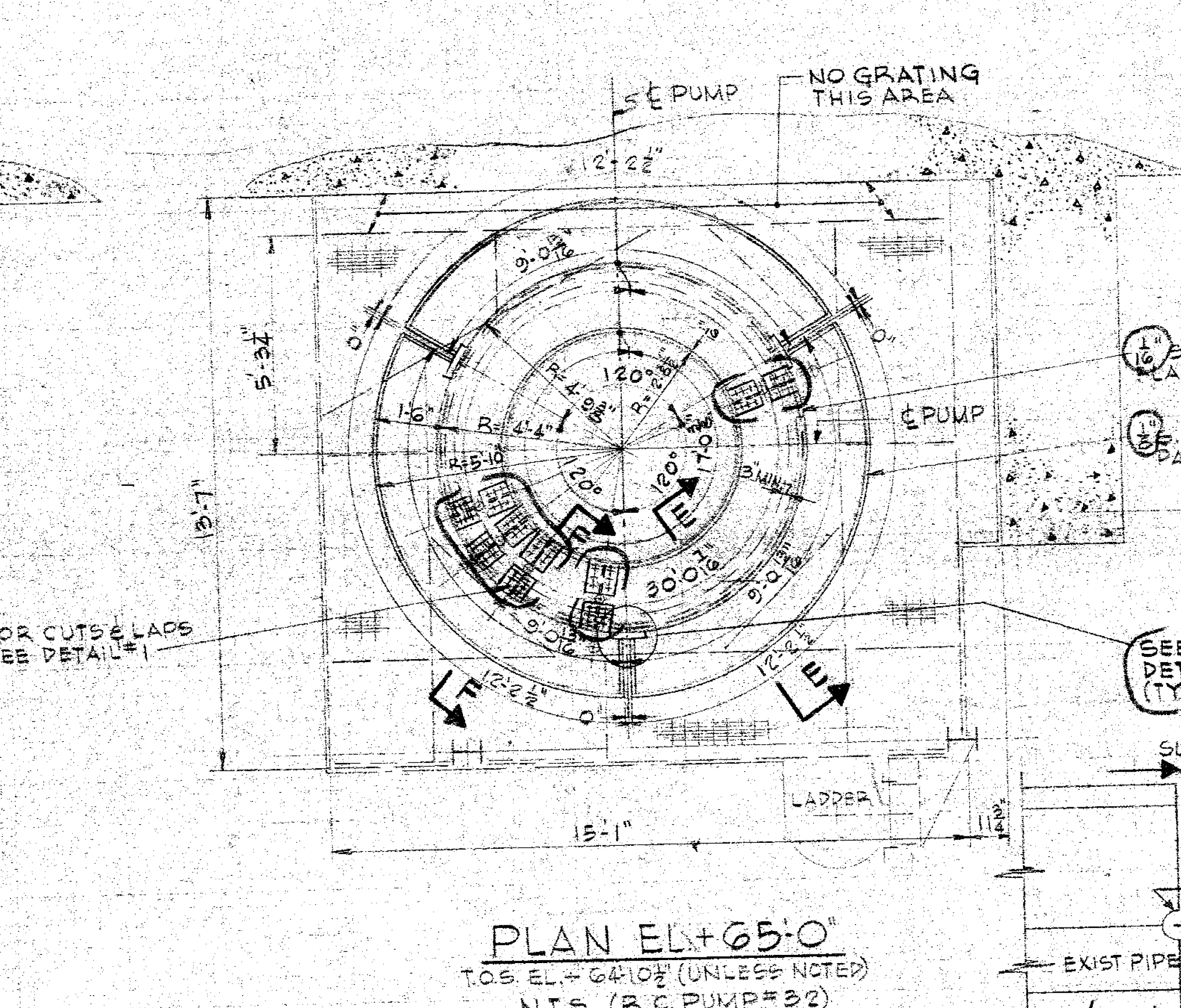
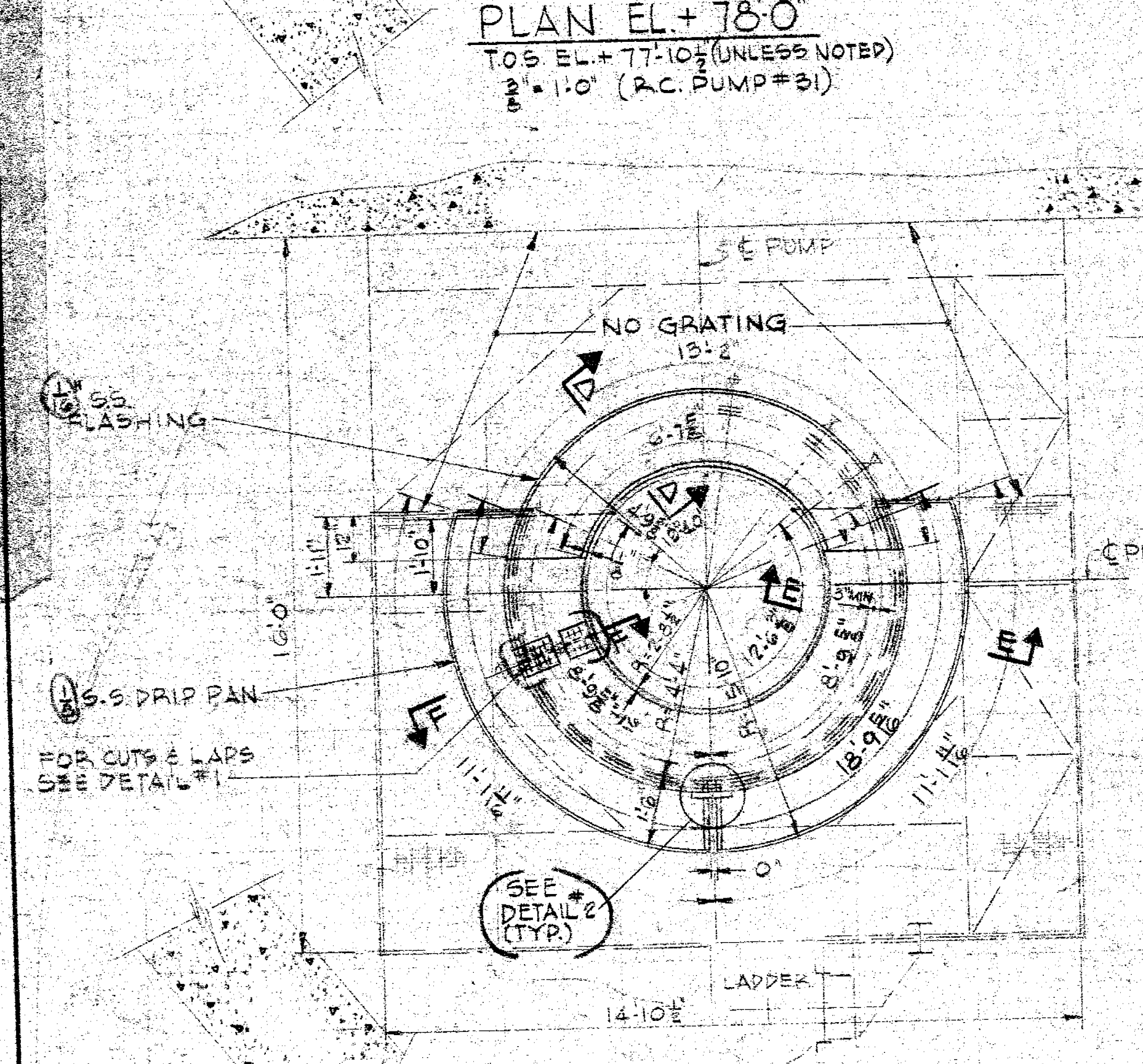
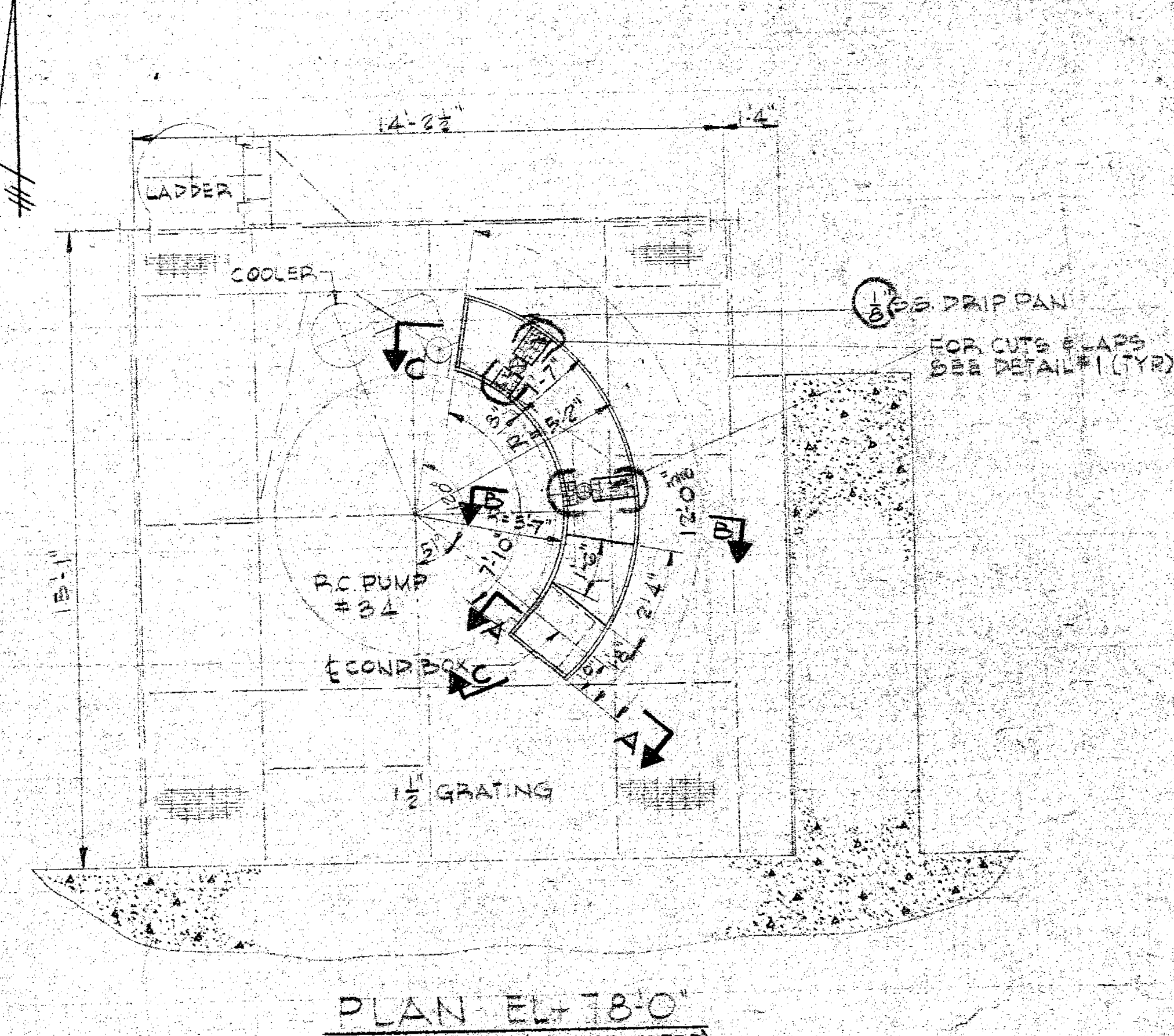
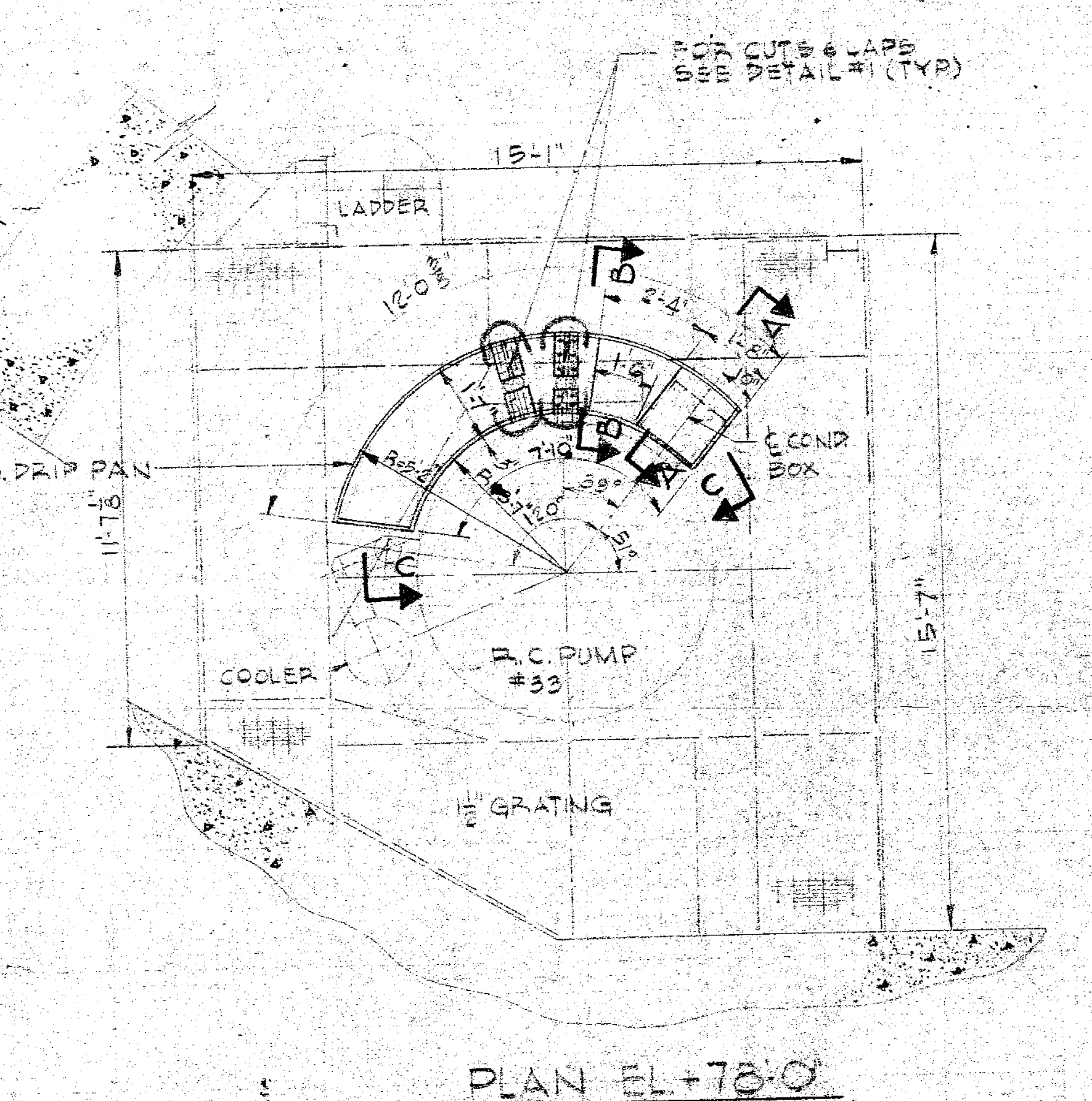
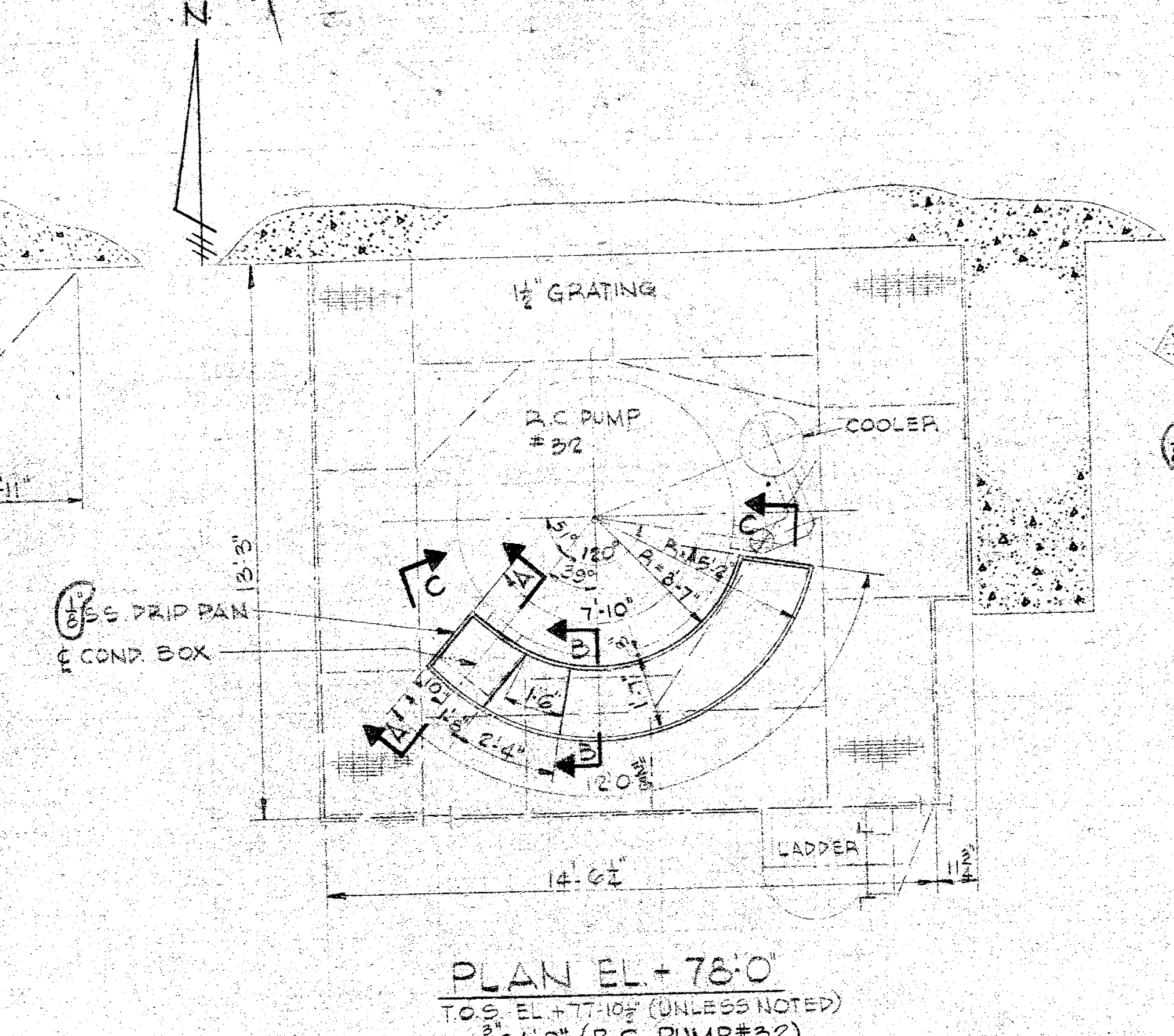
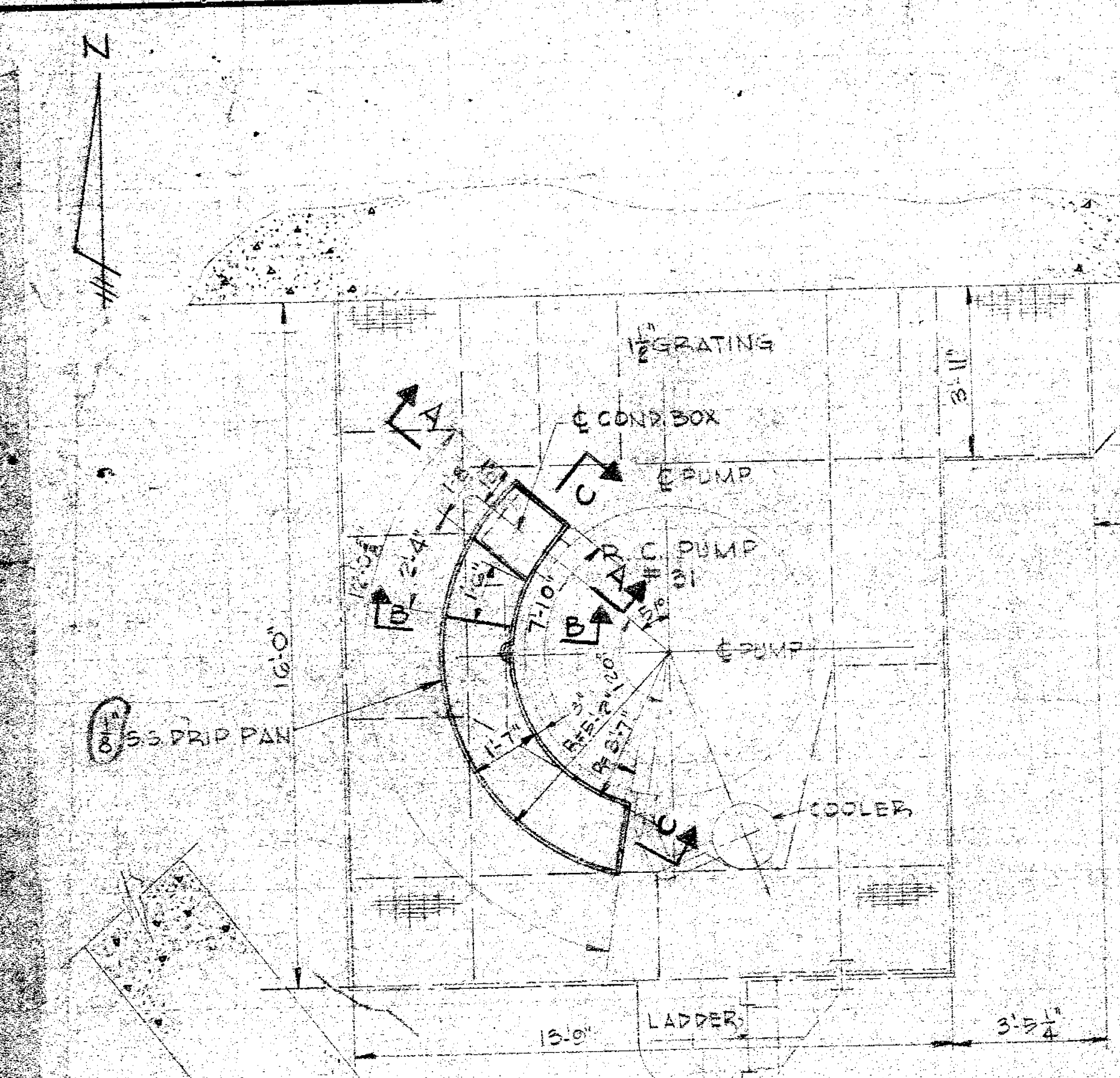


REVISIONS	
1	FOR CONSTRUCTION WORK TO BE DONE BY CONTRACTOR SEE CLASSIFICATION PER C.I. 240-1 4057 J.H. 4/11/55
2	TURNED DOWN EDGE OF FLASHING IN SECT. E-E. AB-D4 F-2, F-2 D-2 REVISOR TO SUIT FIELD CONDITIONS. THIS ISSUE IS NON CLASSIFIED PER C.I. 240-1 4057 J.H. 4/11/55
3	CHANGED IS GAUGED TO S.S. FLASHING AND TO S.S. DRIP PAN. E-C, E-S REVISOR DETAIL #1
4	C-1 ADDED DETAIL #2 & SECTION H-H. D1, D1-D2 ADDED 2" X 2" LG. LIP
5	REVISOR STRAP DETAIL
6	C-2 ADDED WELD NOTE F-2
7	ADDED SHIM NOTE THIS ISSUE IS NON CLASSIFIED PER C.I. 240-1 4057 J.H. 4/11/55

A210097  
 ON REAR COOLANT PUMP  
 SKIRTS & DRIP PANS  
 INSTALLATION INDIAN POINT # 3



**POOR ORIGINAL**

**A210097-2**  
**CONSOLIDATED EDISON CO.**  
 OF NEW YORK, INC.

STATION LOCATION INDIAN POINT # 3  
 INSTALLATION OF METAL SKIRTS AND DRIP PANS ON REACTOR COOLANT PUMPS.

SCALE AS NOTED  
 DRAWN BY J.H.  
 CHECKED BY AS  
 DATE 4-11-55

GENERAL ENGINEER  
 MECHANICAL ENGINEER  
 ELECTRICAL ENGINEER  
 PLANT STRUCTURE ENGINEER  
 CIVIL ENGINEER  
 OPERATIONS ENGINEER  
 NUCLEAR ENGINEER

PRD APERTURE CARD  
 8110216184