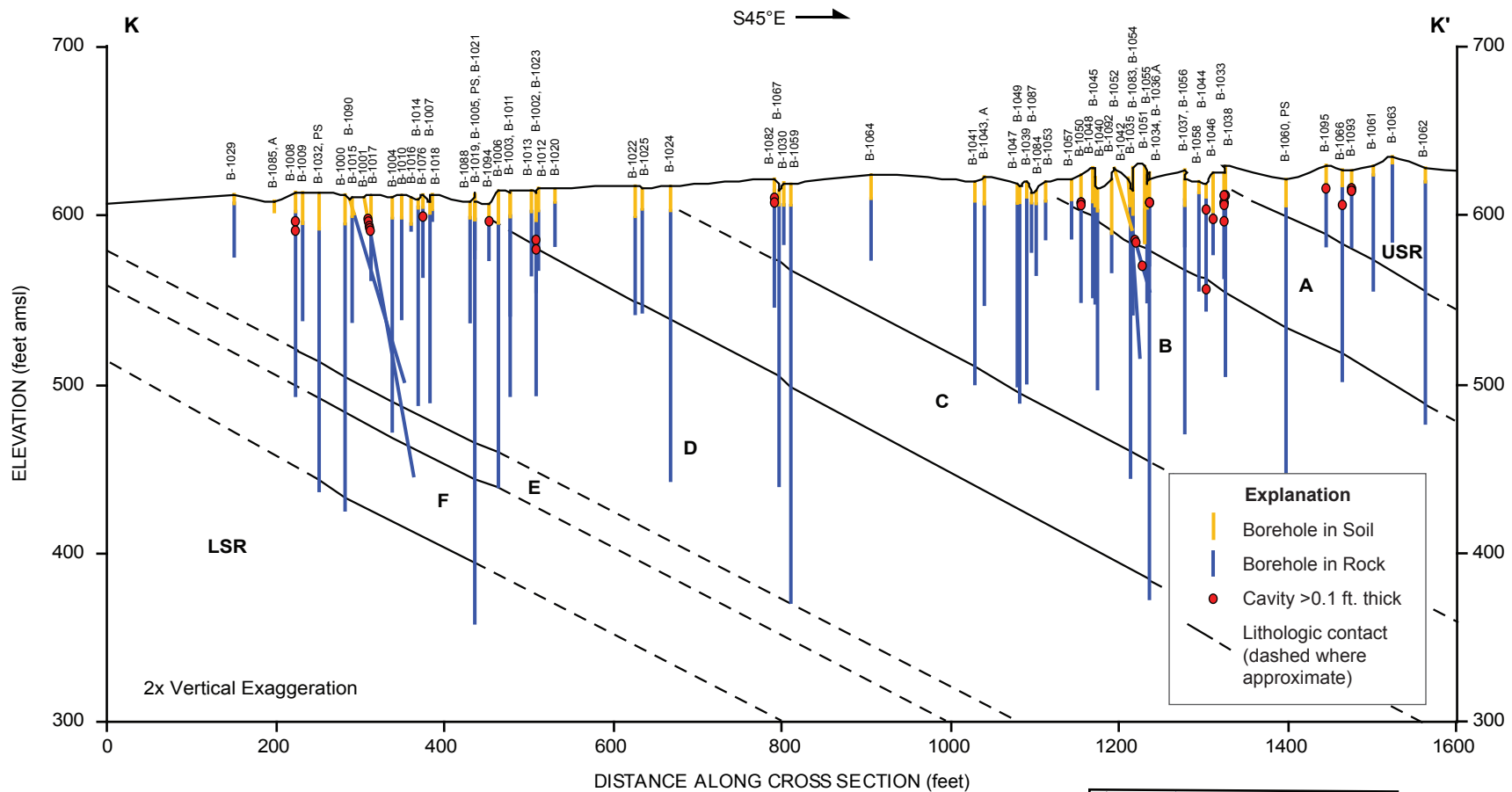


Bellefonte Nuclear Plant, Units 3 & 4  
COL Application  
Part 2, FSAR



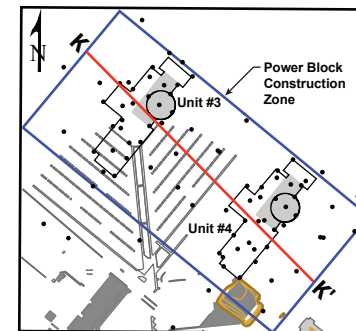
**Unit Descriptions**

- USR** Upper Stones River – Limestone and argillaceous limestone
- A** Middle Stones River Unit A – Argillaceous limestone\*
- B** Middle Stones River Unit B – Limestone
- C** Middle Stones River Unit C – Argillaceous Limestone\*
- D** Middle Stones River Unit D – Limestone
- E** Middle Stones River Unit E – Argillaceous Limestone\*
- F** Middle Stones River Unit F – Limestone
- LSR** Lower Stones River – Limestone and argillaceous limestone

\*argillaceous limestone is described as "Shale with limestone interbeds" in field descriptions on Boring Logs

Notes: Cross section K–K' is oriented perpendicular to bedrock strike of N45°E

Borings within the construction zone are projected along a strike of N45°E to line K–K'



BLN COL 2.5-1  
BLN COL 2.5-5

**FIGURE 2.5-306**  
**Cross Section Distribution of Cavities**