

United Edison Company of New York, Inc.
400 Broad Street, New York, N.Y. 10004
Telephone (212) 480-1111

Lo Duca, Lomb, Luby & Associates
RECEIVED
DEC 21 1972
Per *MT*

DOCKET NUMBER
BROD. & UTIL. SEC. 50-247

December 15, 1972

Re: Indian Point Unit No. 2
AEC Docket No. 50-247

Mr. John F. O'Leary, Director
Directorate of Licensing
U. S. Atomic Energy Commission
Washington, D. C. 20545

Dear Mr. O'Leary

Please find enclosed an organizational chart and chart supplement describing the recently revised organizational structure of Indian Point Station.

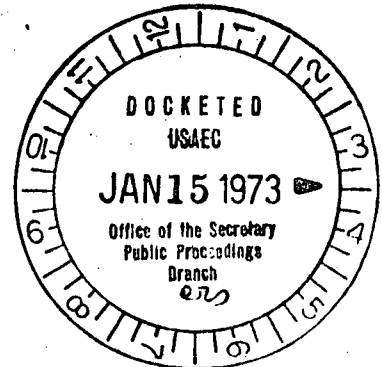
Our Nuclear Facilities Safety Committee has reviewed and approves of the organizational structure of the Nuclear Power Generation Department described herein, as it relates to Indian Point Unit No. 2.

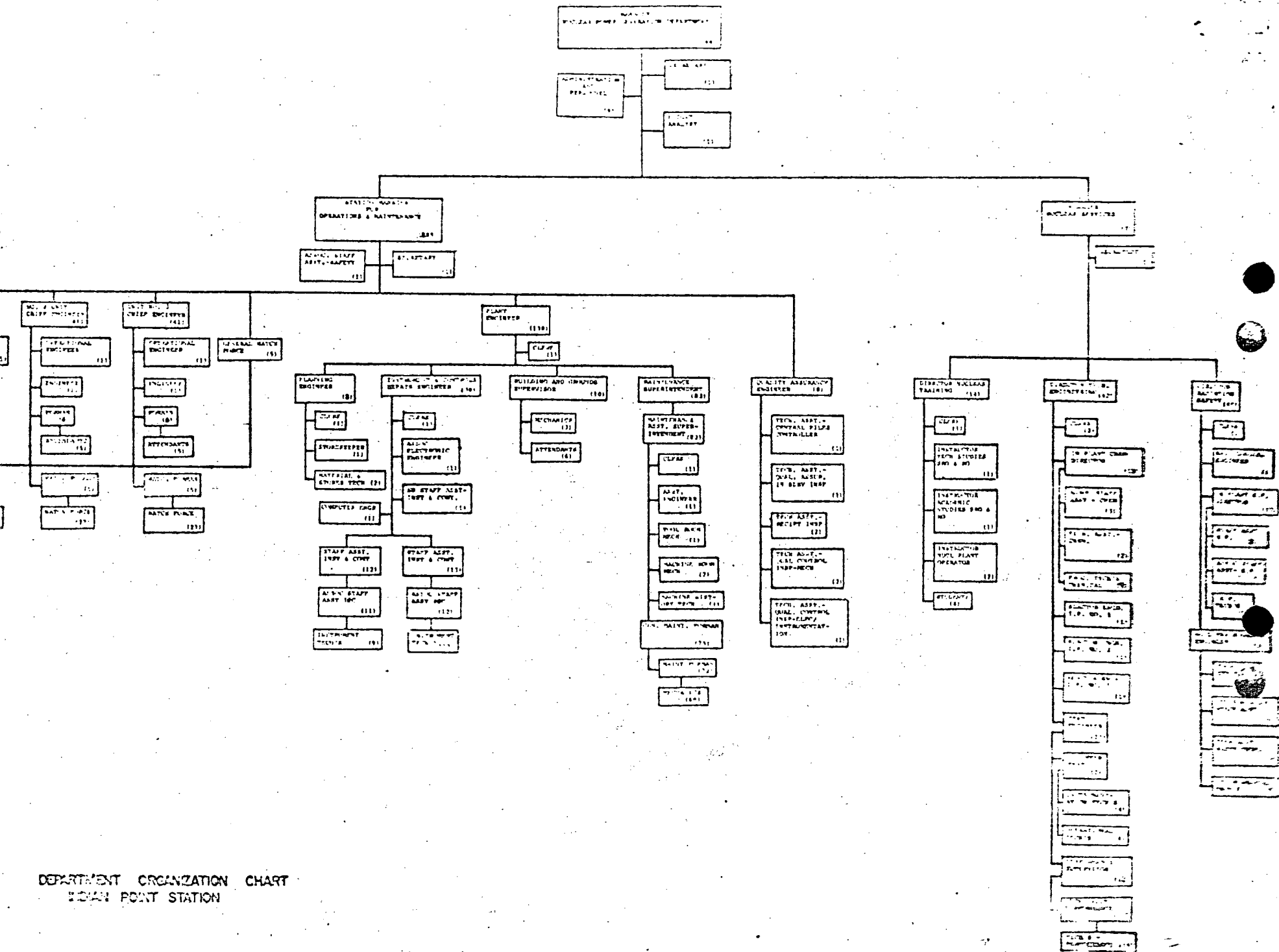
Very truly yours

William C. Goldfarb

enc.
ljc

Copy to Mr. James P. O'Reilly, Director
Regulatory Operations
Region 1
U. S. Atomic Energy Commission
970 Broad Street
Newark, New Jersey 07102





DEPARTMENT ORGANIZATION CHART
MOHAN POINT STATION

NUCLEAR POWER GENERATION DEPARTMENT

ORGANIZATION CHART SUPPLEMENT

The Manager of the Nuclear Power Generation Department provides overall direction to the activities of the two nuclear bureaus, i.e., Operations & Maintenance and Nuclear Services. The Manager coordinates the activities of these bureaus in their relations with the various support groups within the Company, and with governmental agencies concerned with their operations.

Station Manager

The Station Manager is in charge of administering all phases of operation and maintenance of Indian Point Station.

Chief Engineer - Indian Point Unit No. 2

The Chief Engineer is responsible for overseeing all phases of Indian Point Unit No. 2 operations, and for the initiation of all maintenance required thereof.

Operations Engineer - Indian Point Unit No. 2

The Operations Engineer is responsible for coordination of all activities associated with day-to-day operation of the facility.

Engineer - Indian Point Unit No. 2

The Engineer provides staff support for the Chief Engineer in assigned areas of operation and maintenance.

Watch Foreman - Indian Point Unit No. 2

The Watch Foreman has direct responsibility for overseeing and directing the operation of the facility in accordance with the Technical Specifications and in accordance with the Guide-lines and policies established by the Chief Engineer.

General Watch Foreman

The General Watch Foreman is responsible for assuring that the Station is operated and maintained in accordance with the guide-lines and policies established by the Station Manager.

Plant Engineer

The Plant Engineer is responsible for overseeing and directing all Maintenance Services for the Station (mechanical, electrical and instrumentation).

Planning Engineer

The Planning Engineer is responsible for providing long-range planning, including the scheduling of facility maintenance and refueling outages, and also initiates the purchase and proper storage of all materials required by Station forces.

Instrument and Controls Repair Engineer

The Instrument and Controls Repair Engineer is responsible for the maintenance and repair of all Station instrument and control systems.

Maintenance Superintendent

The Maintenance Superintendent is responsible for the maintenance of all mechanical and electrical equipment in the Station.

Quality Assurance Engineer

The Quality Assurance Engineer is responsible for overseeing and directing the Stations's quality assurance and reliability program.

Manager - Nuclear Services

The Manager - Nuclear Services is in charge of administering all phases of Station functions that are primarily of a technical nature (training, radiation safety, chemistry, performance, testing and reactor engineering).

Director - Nuclear Training

The Director - Nuclear Training is responsible for overseeing and directing the formal training of personnel to insure they meet all applicable licensing codes, and other special requirements of their respective positions within the organization.

Director - Technical Engineering

The Director - Technical Engineering is responsible for overseeing and directing the Station's program for monitoring all facets of facility performance. In addition, he provides engineering and technical support for the operations and maintenance organizations.

Test Engineer

The Test Engineer is responsible for overseeing the development and implementation of surveillance procedures designed to detect and quantify variances from facility performance specifications.

In-Plant Chemistry Director

The In-Plant Chemistry Director is responsible for performing the chemical functions of the Station.

Reactor Engineer - Indian Point Unit No. 2

The Reactor Engineer is responsible for providing close surveillance of nuclear plant performance and also for providing technical and engineering support to the Indian Point Unit No. 2 operations organization.

Director - Radiation Safety

The Director - Radiation Safety is responsible for overseeing the development and implementation of a radiation safety program for the Station and is also responsible for monitoring radioactive waste releases, including assessment of the impact of such releases on the Station environs.

Radiological Engineer

The Radiological Engineer is responsible for the development of new procedures and methods designed to improve the Station's radiation safety program.

In-Plant Health Physics Director

The In-Plant Health Physics Director is responsible for the implementation of the Station health physics program.

Nuclear Environmental Engineer

The Nuclear Environmental Engineer is responsible for monitoring the concentration of radioactivity in plant systems and waste. He is also responsible for implementation of the Station's environmental monitoring program.