



Bryan J. Dolan
VP, Nuclear Plant Development

Duke Energy
EC09D/ 526 South Church Street
Charlotte, NC 28201-1006

Mailing Address:
P.O. Box 1006 – EC09D
Charlotte, NC 28201-1006

704-382-0605

Bryan.Dolan@duke-energy.com

January 8, 2010

Document Control Desk
U.S. Nuclear Regulatory Commission
Washington, DC 20555-0001

Subject: Duke Energy Carolinas, LLC
William States Lee III Nuclear Station - Docket Nos. 52-018 and 52-019
AP1000 Combined License Application for the
William States Lee III Nuclear Station Units 1 and 2
Response to Request for Additional Information
Ltr# WLG2010.01-01

References: Letter from J.M. Muir (NRC) to B.J. Dolan (Duke Energy), *Request for Additional Information Regarding the Environmental Review of the Combined License Application for William States Lee III Nuclear Station, Units 1 and 2*, dated August 21, 2008

Letter from B.J. Dolan to Document Control Desk, Duke Energy Carolinas, LLC, William States Lee III Nuclear Station - Docket Nos. 52-018 and 52-019 AP1000 *Combined License Application for the William States Lee III Nuclear Station Units 1 and 2, Response to Request for Additional Information*, Ltr# WLG2009.12-07, dated December 11, 2009

This letter provides supplemental information to the Duke Energy response to the Nuclear Regulatory Commission's (NRC) request for additional information (RAI) included in the referenced letter:

RAI 89, Ecology

The response to this NRC request is addressed in the enclosure which also identifies any associated changes that will be made in a future revision of the William States Lee III Nuclear Station application.

D093
NR0

Document Control Desk
January 8, 2010
Page 2 of 4

If you have any questions or need any additional information, please contact Peter S. Hastings, Nuclear Plant Development Licensing Manager, at 980-373-7820.



Bryan J. Dolan
Vice President
Nuclear Plant Development

Enclosure:

- 1) Supplemental Response C to RAI 89, Ecology

AFFIDAVIT OF BRYAN J. DOLAN

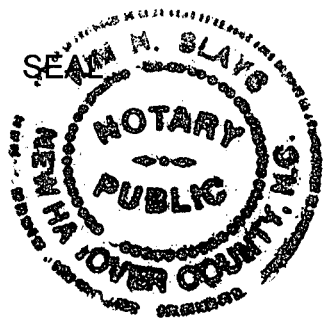
Bryan J. Dolan, being duly sworn, states that he is Vice President, Nuclear Plant Development, Duke Energy Carolinas, LLC, that he is authorized on the part of said Company to sign and file with the U. S. Nuclear Regulatory Commission this supplement to the combined license application for the William States Lee III Nuclear Station and that all the matter and facts set forth herein are true and correct to the best of his knowledge.

Bryan J. Dolan
Bryan J. Dolan

Subscribed and sworn to me on *January 8, 2010*

Sean H. Slays
Notary Public

My commission expires: *April 19, 2010*



Document Control Desk
January 8, 2010
Page 4 of 4

xc (w/o enclosure):

Loren Plisco, Deputy Regional Administrator, Region II
Stephanie Coffin, Branch Chief, DNRL
Robert Schaaf, Branch Chief, DSER

xc (w/ enclosure):

Michelle Moser, Project Manager, DSER
Brian Hughes, Senior Project Manager, DNRL

Lee Nuclear Station Response to Request for Additional Information (RAI)

RAI Letter Dated: August 21, 2008

Reference NRC RAI Number: ER RAI-89 Supplement C

NRC RAI:

Provide information regarding the biota of the site, particularly within the construction footprint. In addition, provide information on the methodology used during associated fieldwork, and maps (GIS layers preferred) of all areas investigated, including sampling/observation points and locations of features of significance to the survey.

In a follow-up teleconference, NRC requested copies of the herpetological surveys species lists by location.

Duke Energy Response:

Ecological surveys were submitted as part of the previous responses to RAI-89 (Letters WLG2008.11-19, and WLG2009.12-07).

Species lists for each survey, providing species found at each location, are attached to this enclosure.

Associated Revisions to the Lee Nuclear Station Combined License Application:

No COLA revisions have been identified with this response.

Associated Attachments:

- | | |
|-------------------|---|
| Attachment 89SC-1 | Map and Species List – Herpetological Survey Species by Location, Lee Nuclear Station, 2009 |
| Attachment 89SC-2 | Map and Species List – Herpetological Survey Species by Location, Lee Nuclear Station Rail Corridor, 2009 |
| Attachment 89SC-3 | Map and Species List – Herpetological Survey Species by Location, London Creek |

Enclosure No. 1

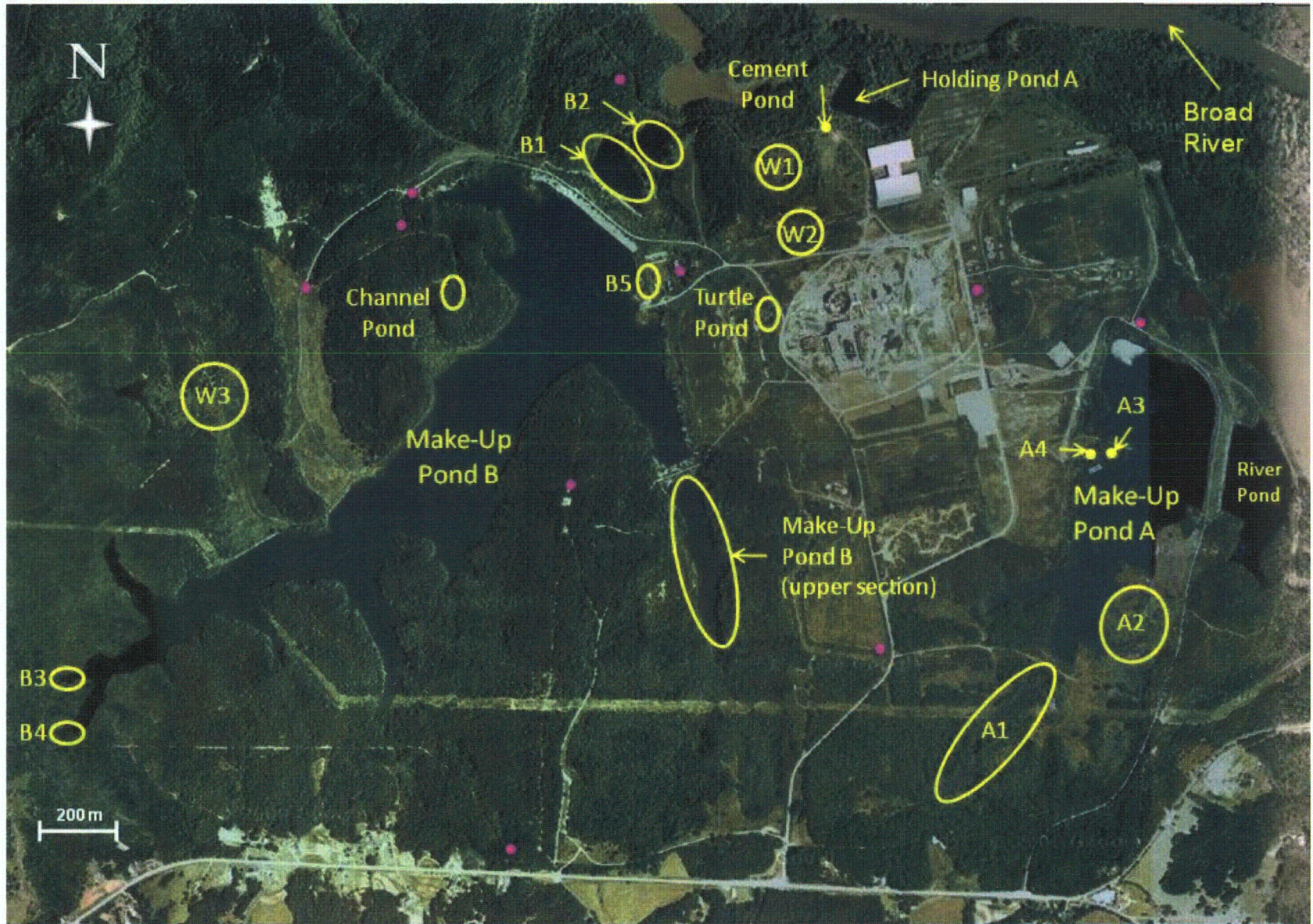
Duke Letter Dated: January 8, 2010

Attachment 89SC-1

Species List

Map and Species List

Herpetological Survey Species by Location, Lee Nuclear Station, 2009



8

Figure 1. Map of the Lee Nuclear Station with all study sites indicated in yellow. Pink dots represent an amphibian and/or reptile observation that was recorded outside of one of the study sites.

Herpetological Survey Species by Location, Lee Nuclear Station, 2009

Scientific Name	Common Name	Status	Listing	Pond A	A1	A2	A3	A4	Pond B	B1	B2	B3	B4	B5	W1	W2	W3	Turtle Pond	Cement Pond	Channel Pond	Other	Museum Record/Vicinity	Abundances
AMPHIBIANS																							
<i>Acris crepitans</i>	Northern cricket frog	Recorded	SCSC		x	x			x	x	x		x	x	x	x	x			x	x	Yes (CHA)	<u>Abundant</u>
<i>Bufo americanus</i>	American toad	Recorded			x	x				x	x		x	x	x	x	x				x	Yes (NCSM)	<u>Common</u>
<i>Bufo fowleri</i>	Fowler's toad	Recorded			x					x	x				x	x	x					Yes (NCSM)	<u>Abundant</u>
<i>Gastrophryne carolinensis</i>	Eastern narrowmouth toad	Recorded													x	x	x				x		<u>Common</u>
<i>Hyla chrysoscelis</i>	Cope's gray treefrog	Recorded			x				x	x					x	x	x					Yes (CHA)	<u>Abundant</u>
<i>Hyla cinerea</i>	Green treefrog	Recorded			x					x	x				x	x	x						<u>Abundant</u>
<i>Hyla versicolor</i>	Gray treefrog	Potential																					
<i>Pseudacris crucifer</i>	Spring peeper	Recorded			x	x	x			x	x				x	x	x	x					<u>Abundant</u>
<i>Pseudacris feriarum</i>	Upland chorus frog	Recorded			x	x				x		x			x	x	x	x				Yes (MPM, NCSM)	<u>Abundant</u>
<i>Rana catesbeiana</i>	Bullfrog	Recorded								x	x			x	x	x	x	x	x	x		Yes (NCSM)	<u>Abundant</u>
<i>Rana clamitans</i>	Green frog	Recorded			x	x				x	x				x	x	x					Yes (NCSM)	<u>Abundant</u>
<i>Rana palustris</i>	Pickereel frog	Recorded	SCSC		x	x				x	x		x		x		x	x				Yes (NCSM)	<u>Common</u>
<i>Rana sphenoccephala</i>	Southern leopard frog	Recorded			x	x	x				x	x			x	x	x						<u>Abundant</u>
<i>Scaphiopus holbrookii</i>	Eastern spadefoot toad	Probable																					
<i>Ambystoma maculatum</i>	Spotted salamander	Recorded			x	x							x	x	x							Yes (NCSM)	<u>Common</u>
<i>Ambystoma opacum</i>	Marbled salamander	Recorded				x								x	x		x					Yes (CHA)	<u>Somewhat Rare</u>
<i>Desmognathus fuscus</i>	Northern dusky salamander	Recorded										x										Yes (CHA, NCSM)	<u>Rare</u>
<i>Eurycea cirrigera</i>	Southern two-lined salamander	Potential																				Yes (NCSM)	
<i>Eurycea guttolineata</i>	Three-lined salamander	Recorded																			x	Yes (CHA)	<u>Rare</u>
<i>Gyrinophilus porphyriticus</i>	Spring salamander	Probable																				Yes (NCSM)	
<i>Hemidactylum scutatum</i>	Four-toed salamander	Potential																					
<i>Notophthalmus viridescens</i>	Red spotted newt	Recorded			x	x									x		x						<u>Common</u>
<i>Plethodon chlorobryonis</i>	Atlantic coast slimy salamander	Recorded																			x		<u>Rare</u>
<i>Pseudotriton montanus</i>	Mud salamander	Potential																					
<i>Pseudotriton ruber</i>	Red salamander	Probable																				Yes (NCSM)	
REPTILES																							
<i>Apalone spinifera</i>	Spiny softshell turtle	Potential																					
<i>Chelydra serpentina</i>	Common snapping turtle	Recorded								x												Yes (CHA)	<u>Somewhat Rare</u>
<i>Chrysemys picta</i>	Painted turtle	Recorded			x					x										x			<u>Common</u>
<i>Kinosternon subrubrum</i>	Eastern mud turtle	Recorded		x						x	x			x									<u>Common</u>
<i>Pseudemys concinna</i>	Eastern river cooter	Recorded								x	x												<u>Somewhat Rare</u>
<i>Sternotherus odoratus</i>	Common musk turtle	Recorded																		x			<u>Rare</u>
<i>Terrapene carolina</i>	Eastern box turtle	Recorded											x				x					Yes (NCSM)	<u>Common</u>
<i>Trachemys scripta</i>	Yellow-bellied slider	Recorded		x					x	x	x			x					x	x		Yes (CHA)	<u>Abundant</u>
<i>Anolis carolinensis</i>	Green anole	Recorded							x	x										x		Yes (CHA)	<u>Common</u>
<i>Aspidoscelis sexlineatus</i>	Six-lined racerunner	Probable																					
<i>Eumeces fasciatus</i>	Five-lined skink	Probable																				Yes (NCSM)	
<i>Eumeces inexpectatus</i>	Southeastern five-lined skink	Potential																					
<i>Eumeces laticeps</i>	Broadhead skink	Potential																					
<i>Ophisaurus attenuatus</i>	Slender glass lizard	Potential																					
<i>Sceloporus undulatus</i>	Fence lizard	Recorded										x										Yes (NCSM)	<u>Rare</u>
<i>Scincella lateralis</i>	Ground skink	Recorded																			x	Yes (CHA)	<u>Rare</u>
<i>Agkistrodon contortrix</i>	Copperhead	Probable																				Yes (NCSM)	
<i>Carphophis amoenus</i>	Worm snake	Probable																				Yes (NCSM)	
<i>Cemophora coccinea</i>	Scarlet snake	Potential																					
<i>Coluber constrictor</i>	Black racer	Recorded																			x	Yes (NCSM)	<u>Somewhat Rare</u>
<i>Crotalus horridus</i>	Canebrake rattlesnake	Potential	SCSC																				
<i>Diadophis punctatus</i>	Ringneck snake	Probable																				Yes (NCSM)	
<i>Elaphe guttata</i>	Corn snake	Potential																					
<i>Elaphe obsoleta</i>	Rat snake	Recorded																			x	Yes (NCSM)	<u>Somewhat Rare</u>
<i>Heterodon platirhinos</i>	Eastern hognose snake	Probable																					
<i>Lampropeltis calligaster</i>	Mole kingsnake	Potential																					
<i>Lampropeltis getula</i>	Eastern kingsnake	Probable																				Yes (NCSM)	
<i>Lampropeltis triangulum</i>	Scarlet kingsnake-milksnake	Potential	SCSC																				
<i>Masticophis flagellum</i>	Coachwhip	Potential																					
<i>Nerodia sipedon</i>	Northern watersnake	Recorded							x														<u>Somewhat Rare</u>
<i>Opheodrys aestivus</i>	Rough green snake	Probable																			x	Yes (NCSM)	

Scientific Name	Common Name	Status	Listing	Pond A	A1	A2	A3	A4	Pond B	B1	B2	B3	B4	B5	W1	W2	W3	Turtle Pond	Cement Pond	Channel Pond	Other	Museum Record/Vicinity	Abundances
<i>Pituophis melanoleucus</i>	Pine snake	Potential	SCSC																				
<i>Regina septemvittata</i>	Queen snake	Probable																					
<i>Sistrurus miliarius</i>	Pigmy rattlesnake	Potential	SCSC																				
<i>Storeria dekayi</i>	Brown snake	Probable																				Yes (NCSM)	
<i>Storeria occipitomaculata</i>	Redbelly snake	Probable																					
<i>Tantilla coronata</i>	Southeastern crowned snake	Probable																					
<i>Thamnophis sauritus</i>	Ribbon snake	Potential																					
<i>Thamnophis sirtalis</i>	Garter snake	Probable																					
<i>Virginia valeriae</i>	Smooth earth snake	Probable																					
<i>Virginia striatula</i>	Rough earth snake	Potential																					
<i>SCSC=Special Concern in South Carolina</i>																							
<i>CHA=Carolina Herp Atlas</i>																							
<i>MPM=Milwaukee Public Museum</i>																							
<i>NCSM=North Carolina State Museum</i>																							
<i>Rare= 1 observance</i>																							
<i>Somewhat Rare= 2 observances</i>																							
<i>Common= 3-7 observances</i>																							
<i>Abundant= 8 or more observances</i>																							

Enclosure No. 1
Duke Letter Dated: January 8, 2010

Attachment 89SC-2

Species List

Map and Species List

Herpetological Survey Species by Location, Lee Nuclear Station Rail Corridor, 2009

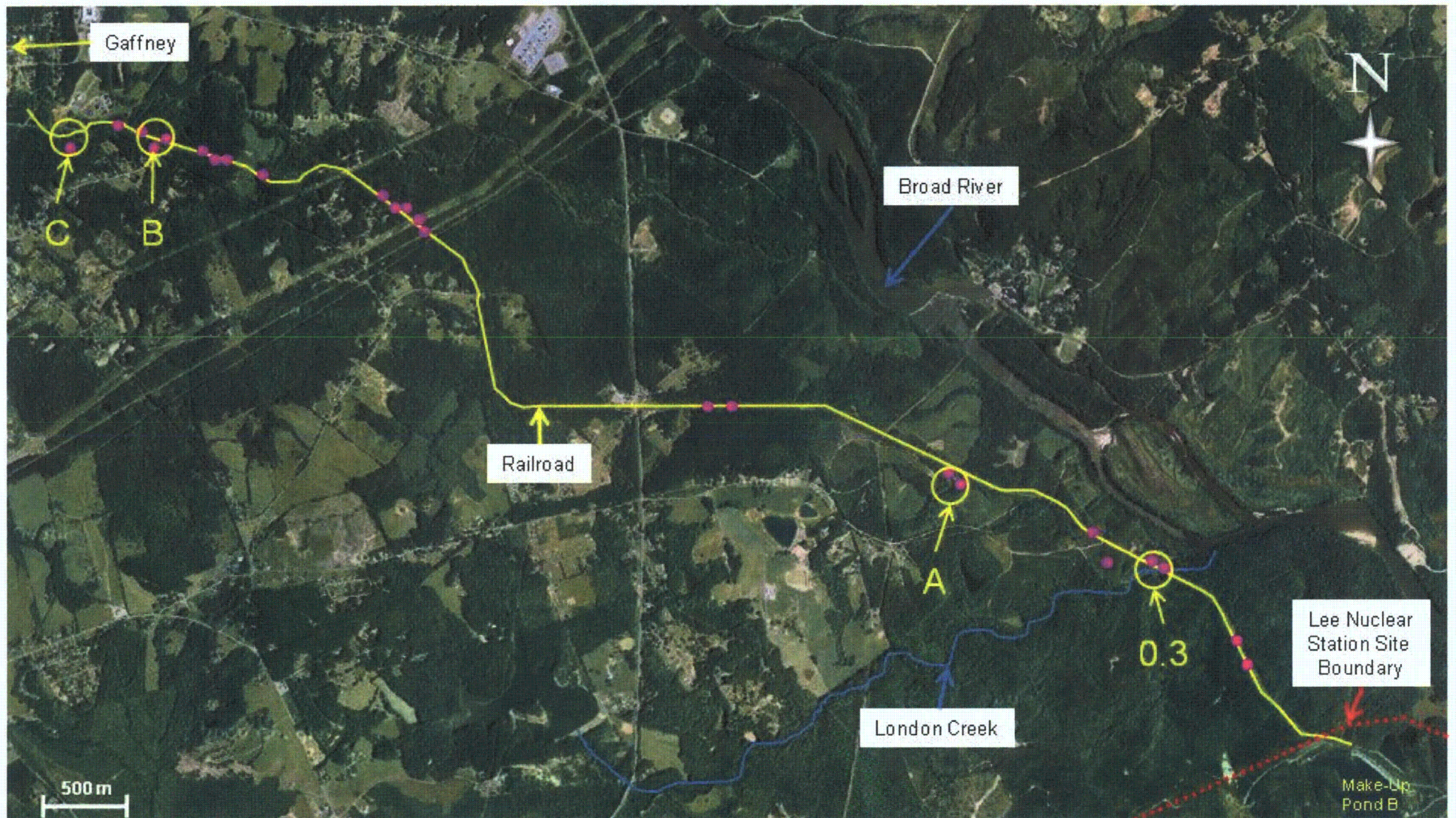


Figure 1. Map of the Lee Nuclear Station railroad with specific study sites circled and labeled. Pink dots represent all amphibian and/or reptile observations, keeping in mind that there can be several records for each dot. Note that study site 0.3 is where London Creek intersects with the railroad bed.

Scientific Name	Common Name	Status	Listing	A	B	C	*Site 0.3	Other	Museum Record/ Vicinity	Abundances
AMPHIBIANS										
<i>Acris crepitans</i>	Northern cricket frog	Recorded	SCSC	x	x		x		Yes (CHA)	<u>Abundant</u>
<i>Bufo americanus</i>	American toad	Recorded					x	x	Yes (NCSM)	<u>Somewhat Rare</u>
<i>Bufo fowleri</i>	Fowler's toad	Recorded					x		Yes (NCSM)	<u>Common</u>
<i>Gastrophryne carolinensis</i>	Eastern narrowmouth toad	Recorded					x			<u>Somewhat Rare</u>
<i>Hyla chrysoscelis</i>	Cope's gray treefrog	Recorded					x		Yes (CHA)	<u>Rare</u>
<i>Hyla cinerea</i>	Green treefrog	Potential								
<i>Hyla versicolor</i>	Gray treefrog	Potential								
<i>Pseudacris crucifer</i>	Spring peeper	Recorded			x		x			<u>Common</u>
<i>Pseudacris feriarum</i>	Upland chorus frog	Recorded					x		Yes (MPM, NCSM)	<u>Somewhat Rare</u>
<i>Rana catesbeiana</i>	Bullfrog	Recorded					x	x	Yes (NCSM)	<u>Abundant</u>
<i>Rana clamitans</i>	Green frog	Recorded					x	x	Yes (NCSM)	<u>Abundant</u>
<i>Rana palustris</i>	Pickerel frog	Recorded	SCSC					x	Yes (NCSM)	<u>Common</u>
<i>Rana sphenoccephala</i>	Southern leopard frog	Recorded		x			x	x		<u>Abundant</u>
<i>Scaphiopus holbrookii</i>	Eastern spadefoot toad	Potential								
<i>Ambystoma maculatum</i>	Spotted salamander	Potential							Yes (NCSM)	
<i>Ambystoma opacum</i>	Marbled salamander	Recorded					x		Yes (CHA)	<u>Rare</u>
<i>Desmognathus fuscus</i>	Northern dusky salamander	Recorded			x	x	x		Yes (CHA, NCSM)	<u>Abundant</u>
<i>Eurycea cirrigera</i>	Southern two-lined salamander	Recorded					x		Yes (NCSM)	<u>Rare</u>
<i>Eurycea guttolineata</i>	Three-lined salamander	Potential							Yes (CHA)	
<i>Gyrinophilus porphyriticus</i>	Spring salamander	Potential							Yes (NCSM)	
<i>Hemidactylium scutatum</i>	Four-toed salamander	Potential								
<i>Notophthalmus viridescens</i>	Red spotted newt	Recorded					x			<u>Rare</u>
<i>Plethodon chlorobryonis</i>	Atlantic coast slimy salamander	Recorded					x	x		<u>Somewhat Rare</u>
<i>Pseudotriton montanus</i>	Mud salamander	Potential								
<i>Pseudotriton ruber</i>	Red salamander	Recorded			x				Yes (NCSM)	<u>Rare</u>
REPTILES										
<i>Apalone spinifera</i>	Spiny softshell turtle	Potential								
<i>Chelydra serpentina</i>	Common snapping turtle	Recorded		x					Yes (CHA)	<u>Somewhat Rare</u>
<i>Chrysemys picta</i>	Painted turtle	Recorded		x						<u>Somewhat Rare</u>
<i>Kinosternon subrubrum</i>	Eastern mud turtle	Recorded					x			<u>Rare</u>
<i>Pseudemys concinna</i>	Eastern river cooter	Potential								
<i>Sternotherus odoratus</i>	Common musk turtle	Potential								
<i>Terrapene carolina</i>	Eastern box turtle	Recorded					x	x	Yes (NCSM)	<u>Common</u>
<i>Trachemys scripta</i>	Yellow-bellied slider	Recorded		x					Yes (CHA)	<u>Somewhat Rare</u>
<i>Anolis carolinensis</i>	Green anole	Recorded		x			x		Yes (CHA)	<u>Common</u>
<i>Aspidoscelis sexlineatus</i>	Six-lined racerunner	Recorded					x			<u>Common</u>

Scientific Name	Common Name	Status	Listing	A	B	C	*Site 0.3	Other	Museum Record/ Vicinity	Abundances
<i>Eumeces fasciatus</i>	Five-lined skink	Potential							Yes (NCSM)	
<i>Eumeces inexpectatus</i>	Southeastern five-lined skink	Potential								
<i>Eumeces laticeps</i>	Broadhead skink	Potential								
<i>Ophisaurus attenuatus</i>	Slender glass lizard	Potential								
<i>Sceloporus undulatus</i>	Fence lizard	Recorded						x	Yes (NCSM)	Rare
<i>Scincella lateralis</i>	Ground skink	Probable							Yes (CHA)	
<i>Agkistrodon contortrix</i>	Copperhead	Recorded					x		Yes (NCSM)	Rare
<i>Carphophis amoenus</i>	Worm snake	Recorded					x	x	Yes (NCSM)	Common
<i>Cemophora coccinea</i>	Scarlet snake	Potential								
<i>Coluber constrictor</i>	Black racer	Recorded					x	x	Yes (NCSM)	Common
<i>Crotalus horridus</i>	Canebrake rattlesnake	Potential	SCSC							
<i>Diadophis punctatus</i>	Ringneck snake	Recorded					x		Yes (NCSM)	Somewhat Rare
<i>Elaphe guttata</i>	Corn snake	Potential								
<i>Elaphe obsoleta</i>	Rat snake	Recorded					x	x	Yes (NCSM)	Common
<i>Heterodon platirhinos</i>	Eastern hognose snake	Probable								
<i>Lampropeltis calligaster</i>	Mole kingsnake	Potential								
<i>Lampropeltis getula</i>	Eastern kingsnake	Recorded					x		Yes (NCSM)	Rare
<i>Lampropeltis triangulum</i>	Scarlet kingsnake-milksnake	Potential	SCSC							
<i>Masticophis flagellum</i>	Coachwhip	Potential								
<i>Nerodia sipedon</i>	Northern watersnake	Recorded		x						Rare
<i>Ophedrys aestivus</i>	Rough green snake	Probable							Yes (NCSM)	
<i>Pituophis melanoleucus</i>	Pine snake	Potential	SCSC							
<i>Regina septemvittata</i>	Queen snake	Probable								
<i>Sistrurus miliaris</i>	Pigmy rattlesnake	Potential	SCSC							
<i>Storeria dekayi</i>	Brown snake	Recorded					x		Yes (NCSM)	Rare
<i>Storeria occipitomaculata</i>	Redbelly snake	Probable								
<i>Tantilla coronata</i>	Southeastern crowned snake	Probable								
<i>Thamnophis sauritus</i>	Ribbon snake	Probable								
<i>Thamnophis sirtalis</i>	Garter snake	Probable								
<i>Virginia valeriae</i>	Smooth earth snake	Probable								
<i>Virginia striatula</i>	Rough earth snake	Potential								
SCSC=Special Concern in South Carolina										
CHA=Carolina Herp Atlas		Rare= 1 observance								
MPM=Milwaukee Public Museum		Somewhat Rare= 2 observances								
NCSM=North Carolina State Museum		Common= 3-7 observances								
		Abundant= 8 or more observances								

Enclosure No. 1
Duke Letter Dated: January 8, 2010

Attachment 89SC-3

Map and Species List

Herpetological Survey Species by Location, London Creek

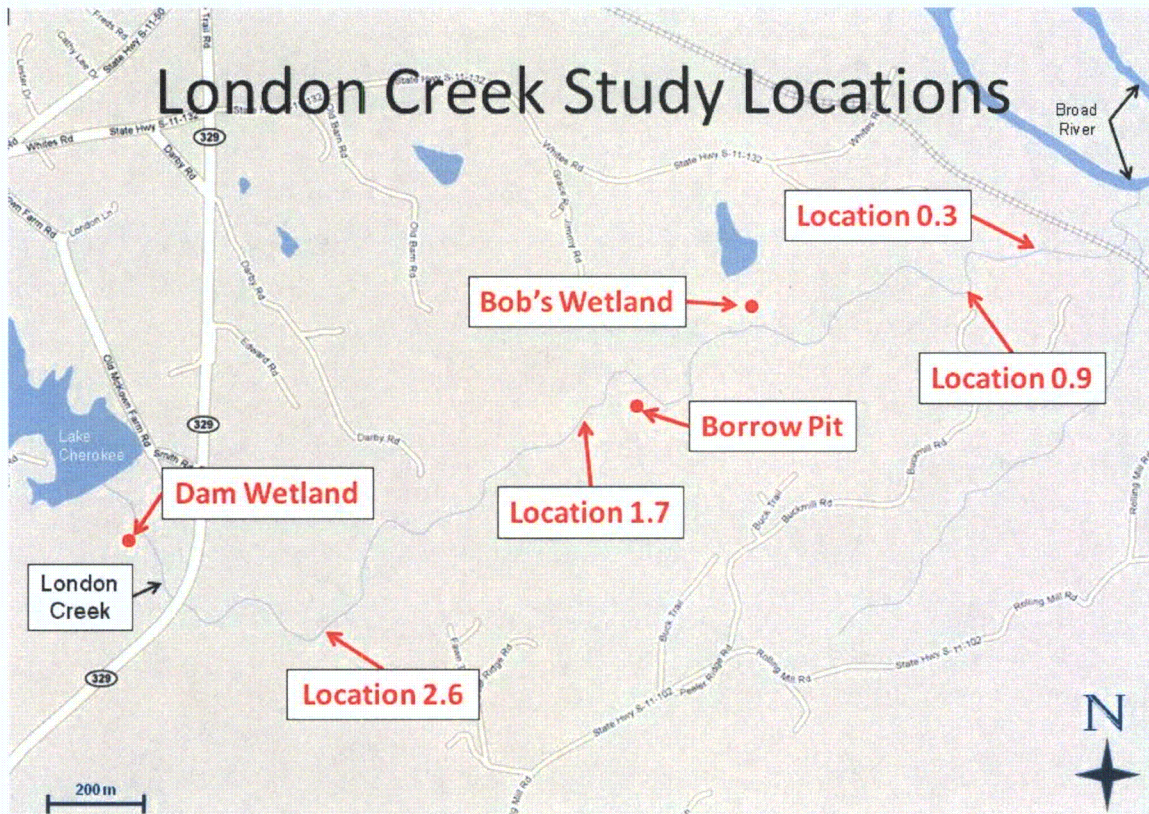


Figure 4. Map indicating the primary study locations used in our study at London Creek.

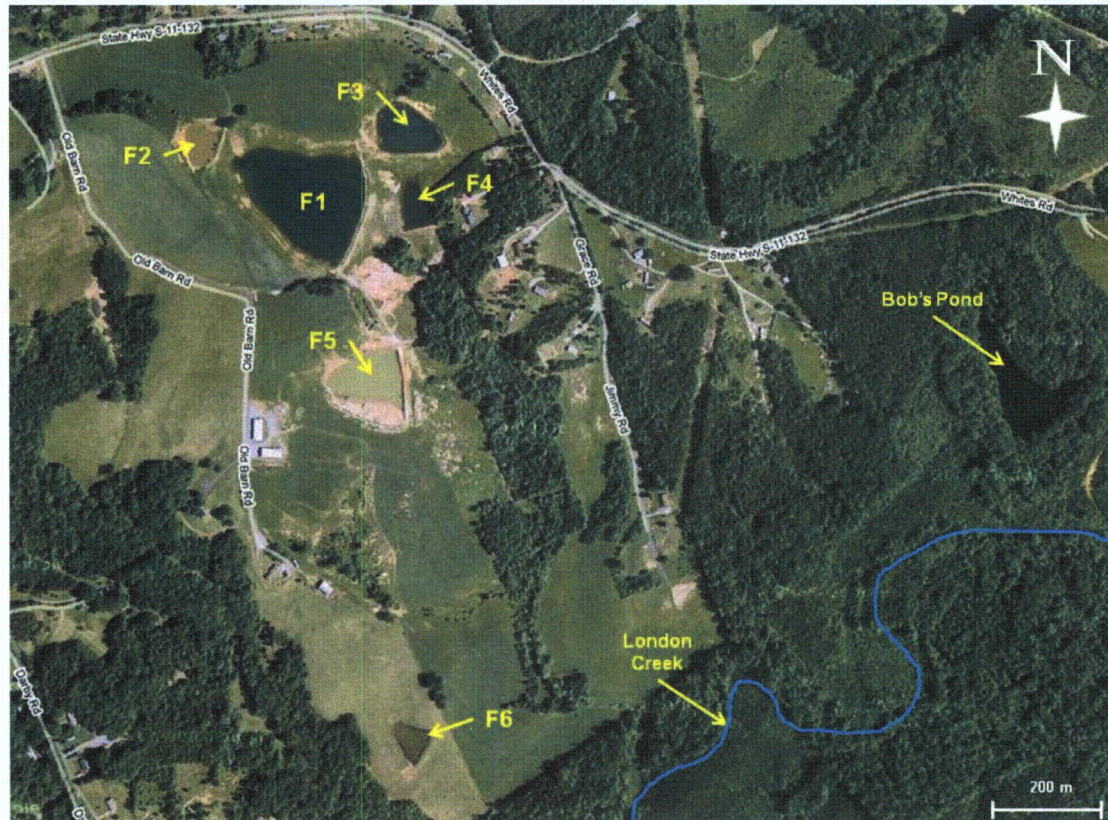


Figure 5. Map indicating locations of farm ponds in the pastureland adjacent to London Creek as well as Bob's Pond in the forested area close to the creek.

Scientific Name	Common Name	Status	Listing	Site 0.3	Site 0.9	Site 1.7	Site 2.6	Borrow Pit	Dam Wetland	Bob's Wetland	Other	Museum Record/ (Vicinity)	Abundances
AMPHIBIANS													
<i>Acris crepitans</i>	Northern cricket frog	Recorded	SCSC	x	x	x	x	x		x		Yes (CHA)	<u>Abundant</u>
<i>Bufo americanus</i>	American toad	Recorded		x		x					x	Yes (NCSM)	<u>Common</u>
<i>Bufo fowleri</i>	Fowler's toad	Recorded		x		x						Yes (NCSM)	<u>Common</u>
<i>Gastrophryne carolinensis</i>	Eastern narrowmouth toad	Recorded		x									<u>Somewhat Rare</u>
<i>Hyla chrysoscelis</i>	Cope's gray treefrog	Recorded		x		x						Yes (CHA)	<u>Abundant</u>
<i>Hyla cinerea</i>	Green treefrog	Probable											
<i>Hyla versicolor</i>	Gray treefrog	Potential											
<i>Pseudacris crucifer</i>	Spring peeper	Recorded		x			x						<u>Common</u>
<i>Pseudacris feriarum</i>	Upland chorus frog	Recorded		x		x	x			x	x	Yes (MPM, NCSM)	<u>Abundant</u>
<i>Rana catesbeiana</i>	Bullfrog	Recorded		x	x	x	x			x		Yes (NCSM)	<u>Abundant</u>
<i>Rana clamitans</i>	Green frog	Recorded		x		x	x	x				Yes (NCSM)	<u>Abundant</u>
<i>Rana palustris</i>	Pickerel frog	Recorded	SCSC			x	x			x		Yes (NCSM)	<u>Common</u>
<i>Rana sphenocephala</i>	Southern leopard frog	Recorded		x		x	x	x		x			<u>Abundant</u>
<i>Scaphiopus holbrookii</i>	Eastern spadefoot toad	Potential											
<i>Ambystoma maculatum</i>	Spotted salamander	Recorded				x		x		x		Yes (NCSM)	<u>Common</u>
<i>Ambystoma opacum</i>	Marbled salamander	Recorded		x		x	x			x		Yes (CHA)	<u>Abundant</u>
<i>Desmognathus fuscus</i>	Northern dusky salamander	Recorded		x	x	x	x	x				Yes (CHA, NCSM)	<u>Abundant</u>
<i>Eurycea cirrigera</i>	Southern two-lined salamander	Recorded		x		x	x					Yes (NCSM)	<u>Abundant</u>
<i>Eurycea guttolineata</i>	Three-lined salamander	Probable										Yes (CHA)	
<i>Gyrinophilus porphyriticus</i>	Spring salamander	Recorded					x					Yes (NCSM)	<u>Somewhat Rare</u>
<i>Hemidactylium scutatum</i>	Four-toed salamander	Potential											
<i>Notophthalmus viridescens</i>	Red spotted newt	Recorded		x		x		x		x			<u>Common</u>
<i>Plethodon chlorobryonis</i>	Atlantic coast slimy salamander	Recorded		x		x	x			x			<u>Abundant</u>
<i>Pseudotriton montianus</i>	Mud salamander	Potential											
<i>Pseudotriton ruber</i>	Red salamander	Recorded					x					Yes (NCSM)	<u>Rare</u>
REPTILES													
<i>Apalone spinifera</i>	Spiny softshell turtle	Potential											
<i>Chelydra serpentina</i>	Common snapping turtle	Recorded				x						Yes (CHA)	<u>Rare</u>
<i>Chrysemys picta</i>	Painted turtle	Potential											
<i>Kinosternon subrubrum</i>	Eastern mud turtle	Recorded		x		x							<u>Somewhat Rare</u>
<i>Pseudemys concinna</i>	Eastern river cooter	Recorded				x							<u>Rare</u>
<i>Sternotherus odoratus</i>	Common musk turtle	Potential											
<i>Terrapene carolina</i>	Eastern box turtle	Recorded		x		x	x					Yes (NCSM)	<u>Common</u>
<i>Trachemys scripta</i>	Yellow-bellied slider	Probable										Yes (CHA)	
<i>Anolis carolinensis</i>	Green anole	Recorded		x		x	x					Yes (CHA)	<u>Abundant</u>
<i>Aspidoscelis sexlineatus</i>	Six-lined racerunner	Recorded		x			x						<u>Common</u>
<i>Eumeces fasciatus</i>	Five-lined skink	Probable										Yes (NCSM)	
<i>Eumeces inexpectatus</i>	Southeastern five-lined skink	Potential											
<i>Eumeces laticeps</i>	Broadhead skink	Recorded				x							<u>Rare</u>
<i>Ophisaurus attenuatus</i>	Slender glass lizard	Potential											
<i>Sceloporus undulatus</i>	Fence lizard	Recorded				x	x					Yes (NCSM)	<u>Common</u>
<i>Scincella lateralis</i>	Ground skink	Recorded					x					Yes (CHA)	<u>Rare</u>

Scientific Name	Common Name	Status	Listing	Site 0.3	Site 0.9	Site 1.7	Site 2.6	Borrow Pit	Dam Wetland	Bob's Wetland	Other	Museum Record/ (Vicinity)	Abundances
<i>Agkistrodon contortrix</i>	Copperhead	Recorded		x								Yes (NCSM)	<u>Rare</u>
<i>Carphophis amoenus</i>	Worm snake	Recorded		x		x	x					Yes (NCSM)	<u>Common</u>
<i>Cemophora coccinea</i>	Scarlet snake	Potential											
<i>Coluber constrictor</i>	Black racer	Recorded		x		x	x				x	Yes (NCSM)	<u>Common</u>
<i>Crotalus horridus</i>	Canebrake rattlesnake	Probable	SCSC										
<i>Diadophis punctatus</i>	Ringneck snake	Recorded		x								Yes (NCSM)	<u>Common</u>
<i>Elaphe guttata</i>	Corn snake	Potential											
<i>Elaphe obsoleta</i>	Rat snake	Recorded		x		x	x					Yes (NCSM)	<u>Common</u>
<i>Heterodon platirhinos</i>	Eastern hognose snake	Probable											
<i>Lampropeltis calligaster</i>	Mole kingsnake	Potential											
<i>Lampropeltis getula</i>	Eastern kingsnake	Recorded		x							x	Yes (NCSM)	<u>Somewhat Rare</u>
<i>Lampropeltis triangulum</i>	Scarlet kingsnake-milksnake	Potential	SCSC										
<i>Masticophis flagellum</i>	Coachwhip	Potential											
<i>Nerodia sipedon</i>	Northern watersnake	Recorded				x	x						<u>Common</u>
<i>Opheodrys aestivus</i>	Rough green snake	Probable										Yes (NCSM)	
<i>Pituophis melanoleucus</i>	Pine snake	Potential	SCSC										
<i>Regina septemvittata</i>	Queen snake	Probable											
<i>Sistrurus miliarius</i>	Pigmy rattlesnake	Potential	SCSC										
<i>Storeria dekayi</i>	Brown snake	Recorded		x								Yes (NCSM)	<u>Rare</u>
<i>Storeria occipitomaculata</i>	Redbelly snake	Probable											
<i>Tantilla coronata</i>	Southeastern crowned snake	Probable											
<i>Thamnophis sauritus</i>	Ribbon snake	Probable											
<i>Thamnophis sirtalis</i>	Garter snake	Recorded					x						<u>Rare</u>
<i>Virginia valeriae</i>	Smooth earth snake	Probable											
<i>Virginia striatula</i>	Rough earth snake	Potential											
SCSC=Special Concern in South Carolina													
CHA=Carolina Herp Atlas													
MPM=Milwaukee Public Museum													
NCSM=North Carolina State Museum													
		Rare= 1 observance											
		Somewhat Rare= 2 observances											
		Common= 3-7 observances											
		Abundant= 8 or more observances											

Scientific Name	Common Name	Status	Listing	Bob's Pond	F1	F2	F3	F4	F5	F6	Museum Record/Vicinity	Abundances
AMPHIBIANS												
<i>Acris crepitans</i>	Northern cricket frog	Recorded	SCSC	x	x		x	x		x	Yes (CHA)	<u>Abundant</u>
<i>Bufo americanus</i>	American toad	Recorded									Yes (NCSM)	<u>Rare</u>
<i>Bufo fowleri</i>	Fowler's toad	Recorded		x		x		x			Yes (NCSM)	<u>Abundant</u>
<i>Gastrophryne carolinensis</i>	Eastern narrowmouth toad	Recorded						x				<u>Rare</u>
<i>Hyla chrysoceles</i>	Cope's gray treefrog	Recorded				x		x			Yes (CHA)	<u>Somewhat Rare</u>
<i>Hyla cinerea</i>	Green treefrog	Recorded					x	x	x	x		<u>Abundant</u>
<i>Hyla versicolor</i>	Gray treefrog	Potential										
<i>Pseudacris crucifer</i>	Spring peeper	Probable										
<i>Pseudacris feriarum</i>	Upland chorus frog	Recorded									Yes (MPM, NCSM)	<u>Rare</u>
<i>Rana catesbeiana</i>	Bullfrog	Recorded		x						x	Yes (NCSM)	<u>Somewhat Rare</u>
<i>Rana clamitans</i>	Green frog	Recorded		x							Yes (NCSM)	<u>Rare</u>
<i>Rana palustris</i>	Pickerel frog	Probable	SCSC								Yes (NCSM)	
<i>Rana sphenoccephala</i>	Southern leopard frog	Probable										
<i>Scaphiopus holbrookii</i>	Eastern spadefoot toad	Potential										
<i>Ambystoma maculatum</i>	Spotted salamander	Potential									Yes (NCSM)	
<i>Ambystoma opacum</i>	Marbled salamander	Potential									Yes (CHA)	
<i>Desmognathus fuscus</i>	Northern dusky salamander	Potential									Yes (CHA, NCSM)	
<i>Eurycea cirrigera</i>	Southern two-lined salamander	Potential									Yes (NCSM)	
<i>Eurycea guttolineata</i>	Three-lined salamander	Potential									Yes (CHA)	
<i>Gyrinophilus porphyriticus</i>	Spring salamander	Potential									Yes (NCSM)	
<i>Hemidactylium scutatum</i>	Four-toed salamander	Potential										
<i>Notophthalmus viridescens</i>	Red spotted newt	Probable										
<i>Plethodon chlorobryonis</i>	Atlantic coast slimy salamander	Potential										
<i>Pseudotriton montanus</i>	Mud salamander	Potential										
<i>Pseudotriton ruber</i>	Red salamander	Potential									Yes (NCSM)	
REPTILES												
<i>Apalone spinifera</i>	Spiny softshell turtle	Potential										
<i>Chelydra serpentina</i>	Common snapping turtle	Recorded		x			x	x			Yes (CHA)	<u>Common</u>
<i>Chrysemys picta</i>	Painted turtle	Recorded			x	x		x	x	x		<u>Abundant</u>
<i>Kinosternon subrubrum</i>	Eastern mud turtle	Recorded		x						x		<u>Common</u>
<i>Pseudemys concinna</i>	Eastern river cooter	Potential										
<i>Sternotherus odoratus</i>	Common musk turtle	Recorded		x								<u>Rare</u>
<i>Terrapene carolina</i>	Eastern box turtle	Recorded		x							Yes (NCSM)	<u>Rare</u>
<i>Trachemys scripta</i>	Yellow-bellied slider	Recorded		x	x	x	x		x	x	Yes (CHA)	<u>Abundant</u>
<i>Anolis carolinensis</i>	Green anole	Probable									Yes (CHA)	
<i>Aspidoscelis sexlineatus</i>	Six-lined racerunner	Probable										
<i>Eumeces fasciatus</i>	Five-lined skink	Potential									Yes (NCSM)	
<i>Eumeces inexpectatus</i>	Southeastern five-lined skink	Potential										
<i>Eumeces laticeps</i>	Broadhead skink	Potential										
<i>Ophisaurus attenuatus</i>	Slender glass lizard	Potential										
<i>Sceloporus undulatus</i>	Fence lizard	Probable									Yes (NCSM)	
<i>Scincella lateralis</i>	Ground skink	Probable									Yes (CHA)	
<i>Agkistrodon contortrix</i>	Copperhead	Probable									Yes (NCSM)	

Scientific Name	Common Name	Status	Listing	Bob's Pond	F1	F2	F3	F4	F5	F6	Museum Record/Vicinity	Abundances
<i>Carphophis amoenus</i>	Worm snake	Probable									Yes (NCSM)	
<i>Cemophora coccinea</i>	Scarlet snake	Potential										
<i>Coluber constrictor</i>	Black racer	Probable									Yes (NCSM)	
<i>Crotalus horridus</i>	Canebrake rattlesnake	Potential	SCSC									
<i>Diadophis punctatus</i>	Ringneck snake	Probable									Yes (NCSM)	
<i>Elaphe guttata</i>	Corn snake	Potential										
<i>Elaphe obsoleta</i>	Rat snake	Probable									Yes (NCSM)	
<i>Heterodon platirhinos</i>	Eastern hognose snake	Probable										
<i>Lampropeltis calligaster</i>	Mole kingsnake	Potential										
<i>Lampropeltis getula</i>	Eastern kingsnake	Probable									Yes (NCSM)	
<i>Lampropeltis triangulum</i>	Scarlet kingsnake-milksnake	Potential	SCSC									
<i>Masticophis flagellum</i>	Coachwhip	Potential										
<i>Nerodia sipedon</i>	Northern watersnake	Probable										
<i>Opheodrys aestivus</i>	Rough green snake	Probable									Yes (NCSM)	
<i>Pituophis melanoleucus</i>	Pine snake	Potential	SCSC									
<i>Regina septemvittata</i>	Queen snake	Potential										
<i>Sistrurus miliarius</i>	Pigmy rattlesnake	Potential	SCSC									
<i>Storeria dekayi</i>	Brown snake	Probable									Yes (NCSM)	
<i>Storeria occipitomaculata</i>	Redbelly snake	Probable										
<i>Tantilla coronata</i>	Southeastern crowned snake	Potential										
<i>Thamnophis sauritus</i>	Ribbon snake	Potential										
<i>Thamnophis sirtalis</i>	Garter snake	Probable										
<i>Virginia valeriae</i>	Smooth earth snake	Potential										
<i>Virginia striatula</i>	Rough earth snake	Potential										
SCSC=Special Concern in South Carolina												
CHA=Carolina Herp Atlas		Rare= 1 observance										
MPM=Milwaukee Public Museum		Somewhat Rare= 2 observances										
NCSM=North Carolina State Museum		Common= 3-7 observances										
		Abundant= 8 or more observances										