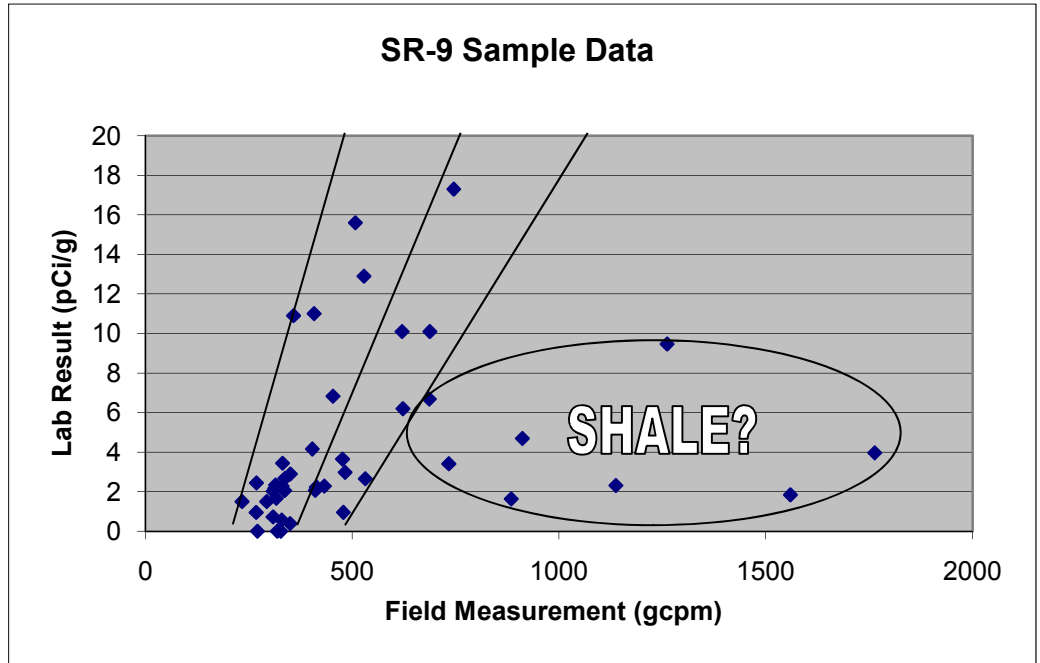
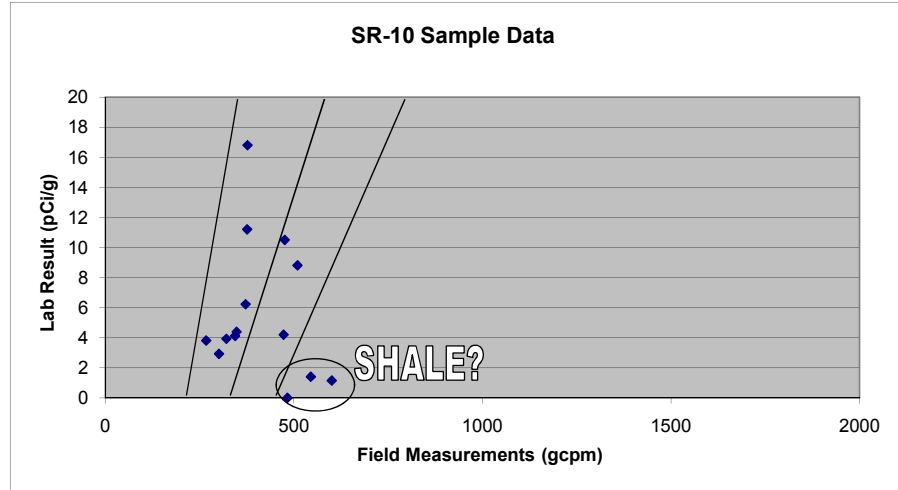


Field Result (cpm)	Lab Result (pCi/g)
621	10.1
508	15.6
408	11
532	2.65
483	2.98
734	3.41
309	0.724
331	2.28
414	2.24
1138	2.31
234	1.5
268	0.95
350	0.396
746	17.3
294	1.5
337	2.06
411	2.07
317	1.67
328	0
319	0
271	0
313	2.17
309	2.03
688	10.1
404	4.16
330	0.568
315	2.34
885	1.64
479	0.957
477	3.65
332	3.44
912	4.69
351	2.9
529	12.9
359	10.9
1764	3.97



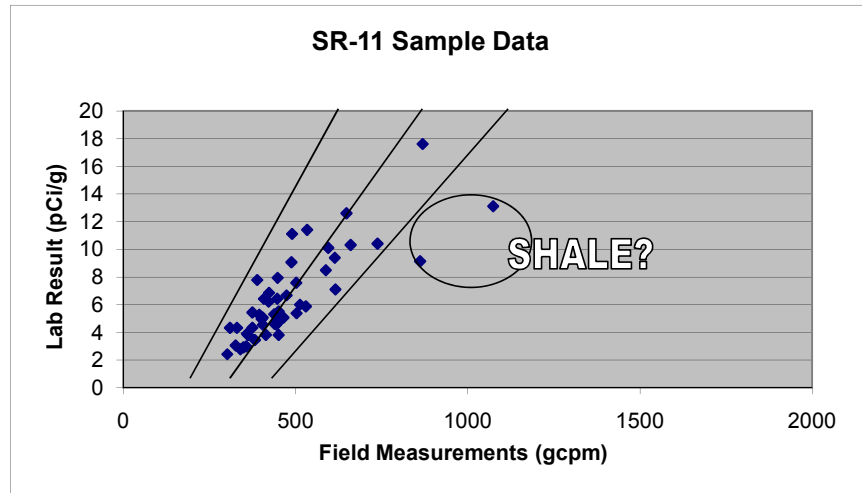
1262	9.47
433	2.28
338	2.68
269	2.45
687	6.68
1560	1.84
623	6.2
454	6.83

Field Result (gcpm)	Result (pCi/g)
267	3.81
545	1.41
601	1.15
376	11.2
348	4.39
372	6.23
476	10.5
344	4.12
321	3.93
301	2.93
473	4.2
377	16.8
483	0
510	8.81



Field Result (gcpm) | Result (pCi/g)

375	4.33
648	12.6
738	10.4
862	9.12
357	2.97
340	2.77
1074	13.1
448	4.67
382	3.44
474	6.66
447	6.42
588	8.48
326	3.04
359	3.89
330	4.32
439	4.62
395	5.26
310	4.32
349	2.91
423	6.85
375	5.43
465	5.05
362	3.8
405	5.06
502	7.57
422	6.2
448	7.93
302	2.41
408	6.41
490	11.1
451	3.8
451	5.5
402	4.96
869	17.6
389	7.77
614	9.38
595	10.1
660	10.3
534	11.4
513	5.99
438	5.3
503	5.37
405	4.54
444	4.55
530	5.86
414	3.81
616	7.09
488	9.06



Field Result (gcpm) | Result (pCi/g)

394	7.72
366	2.96
339	2.9
633	6.67
228	1.06
485	1.9
1039	6.96
305	1.49
596	3.48
446	7.37
1347	8.94
286	1.16
252	0.0668
630	9.2
551	3.34
620	3.62
729	14
459	6.93
392	3.24
509	8.26
429	7.26

