

Comanche Peak Nuclear Power Plant, Units 3 & 4 COL Application Part 2, FSAR

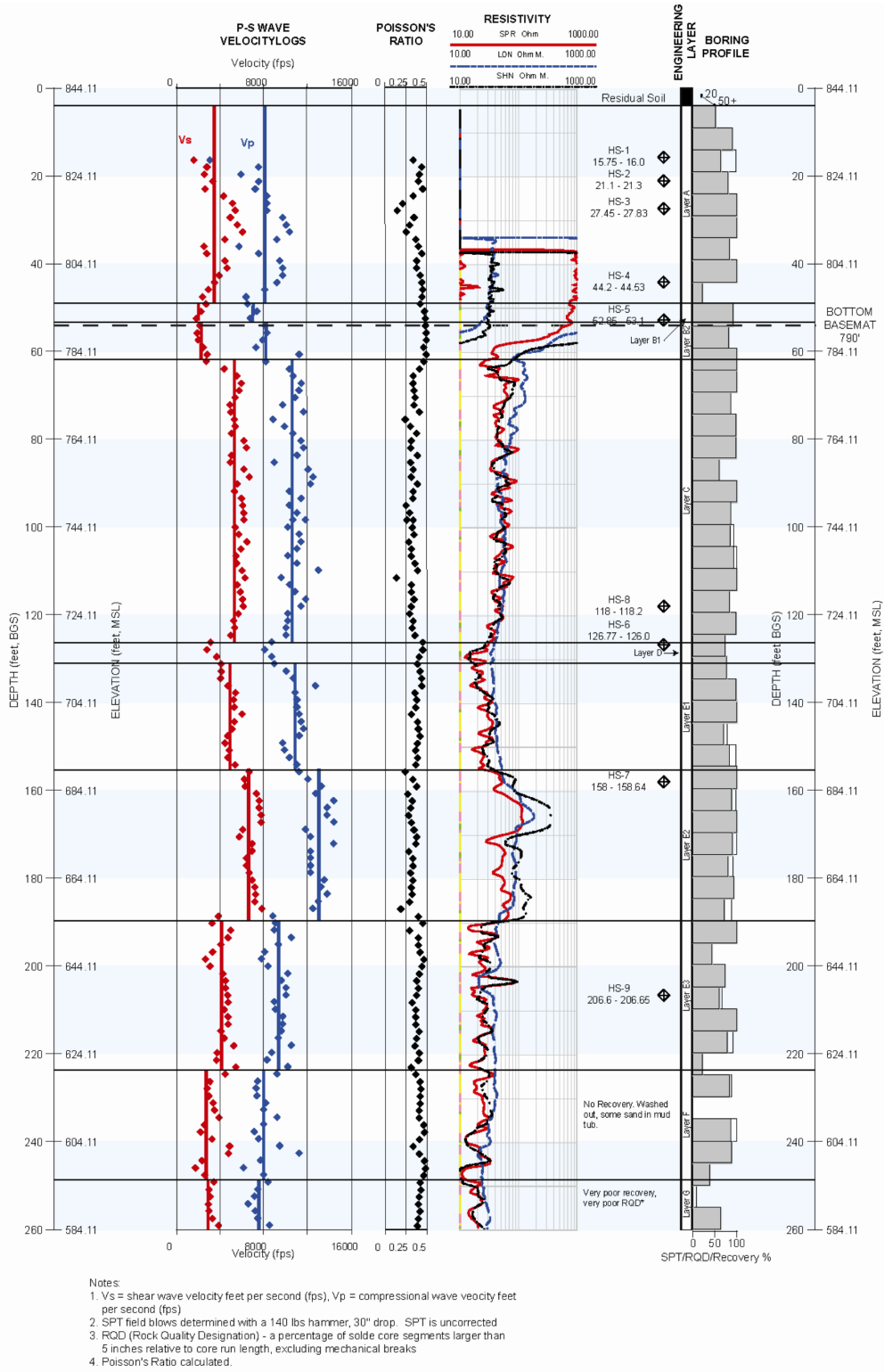


Figure 2.5.4-208 Boring In Situ Test Summary Log, B-1012 (Sheet 1 of 3)

Comanche Peak Nuclear Power Plant, Units 3 & 4 COL Application Part 2, FSAR

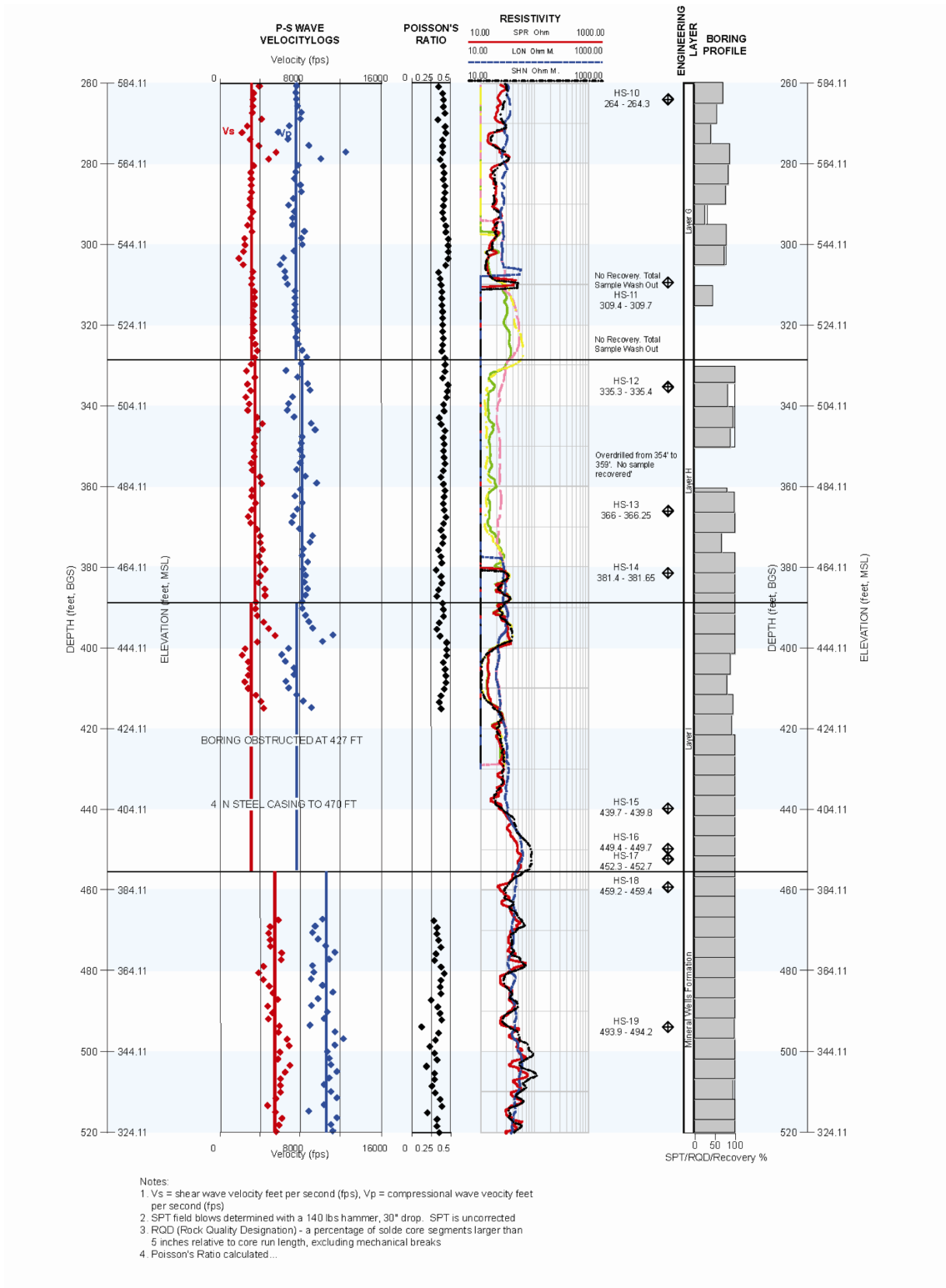
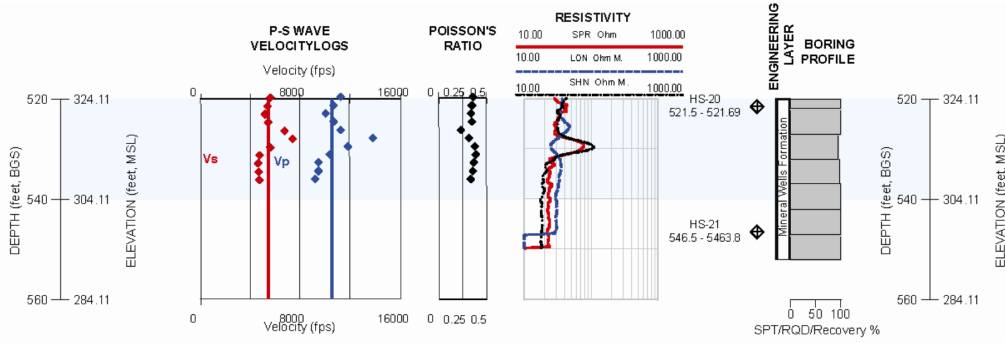


Figure 2.5.4-208 Boring In Situ Test Summary Log, B-1012 (Sheet 2 of 3)

Comanche Peak Nuclear Power Plant, Units 3 & 4 COL Application Part 2, FSAR



- Notes:
1. Vs = shear wave velocity feet per second (fps), Vp = compressional wave velocity feet per second (fps)
 2. SPT field blows determined with a 140 lbs hammer, 30" drop. SPT is uncorrected
 3. RQD (Rock Quality Designation) - a percentage of solid core segments larger than 5 inches relative to core run length, excluding mechanical breaks
 4. Poisson's Ratio calculated.

Figure 2.5.4-208 Boring In Situ Test Summary Log, B-1012 (Sheet 3 of 3)