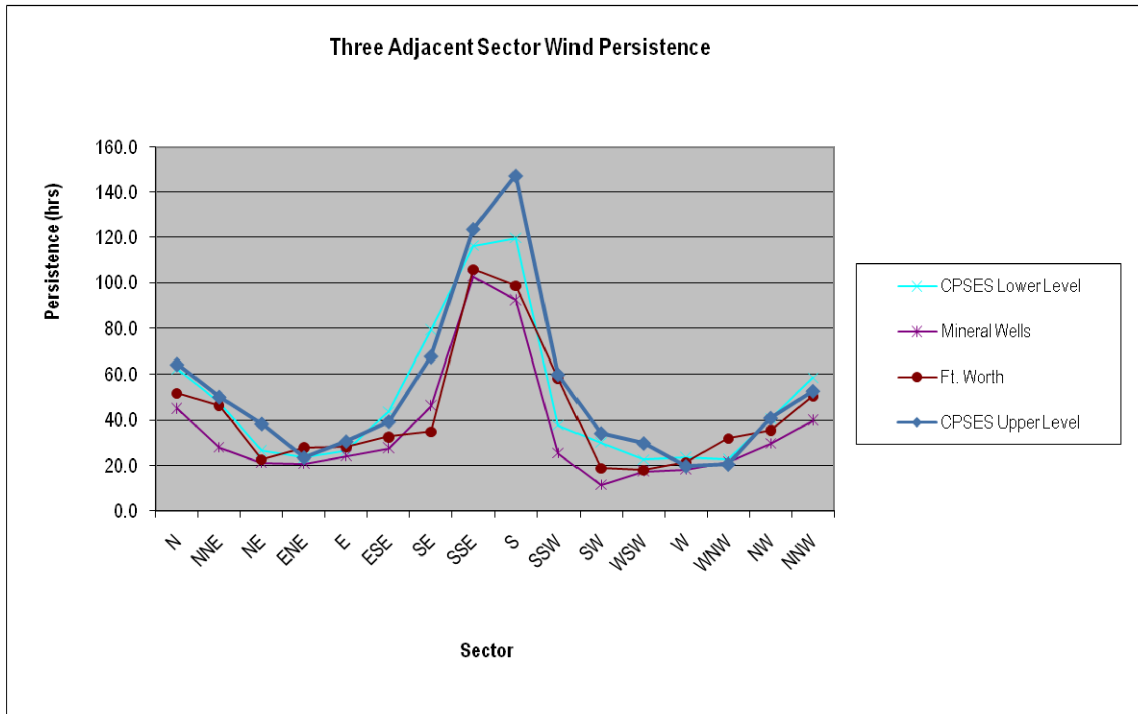


**Comanche Peak Nuclear Power Plant, Units 3 & 4
COL Application
Part 2, FSAR**



NOTES:

1. Wind values which were either not provided, had a zero speed value, or a VRB wind direction were not included, and assumed to break any consecutive wind direction count.
2. Wind persistence values above are the average persistence durations for the period of record.
3. Period of record at CPNPP site and Mineral Wells Airport, 2001-2006.
4. Period of record at Fort Worth Airport, 1997-2006. Data from Local Climatological Data, National Oceanic and Atmospheric Administration, U.S. Department of Commerce, Asheville, NC, Dallas Fort Worth International Airport, Station No. 03927.
5. Period of record at Mineral Wells Airport, 2001-2006. Data from Local Climatological Data, National Oceanic and Atmospheric Administration, U.S. Department of Commerce, Asheville, NC, Mineral Wells Airport, Station No. 93985.

Figure 2.3-260 Three Sector Wind Persistence