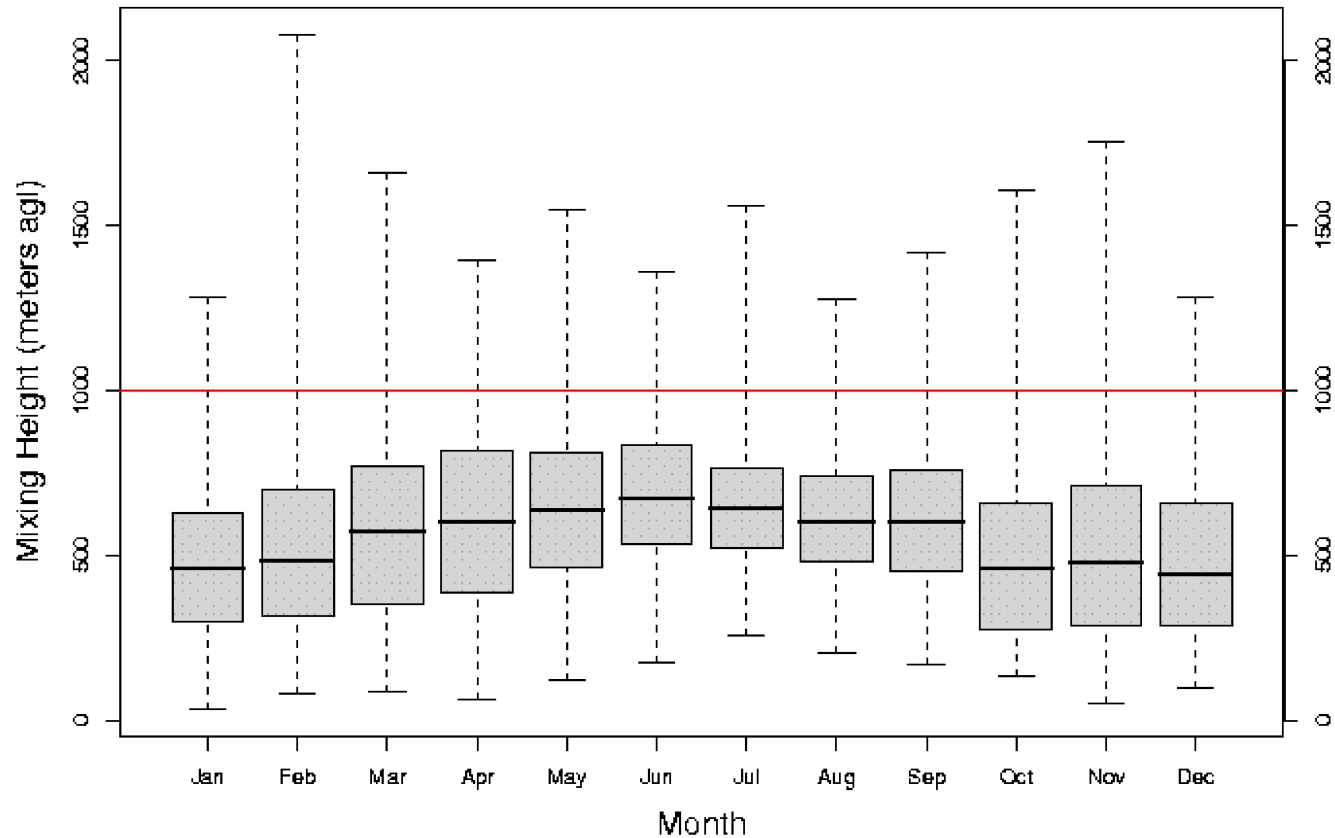


Comanche Peak Nuclear Power Plant, Units 3 & 4
COL Application
Part 2, FSAR

AM – N 32°18.75' W 97°46.25'
Daily Variability by Month



Reference: Ventilation Climate Information System, USDOJ-USDA Joint Fire Science Program.
<http://web.airfire.org/vcis>, accessed 9/10/2007.

Figure 2.3-240 Annual Morning Mixing Height at CPNPP