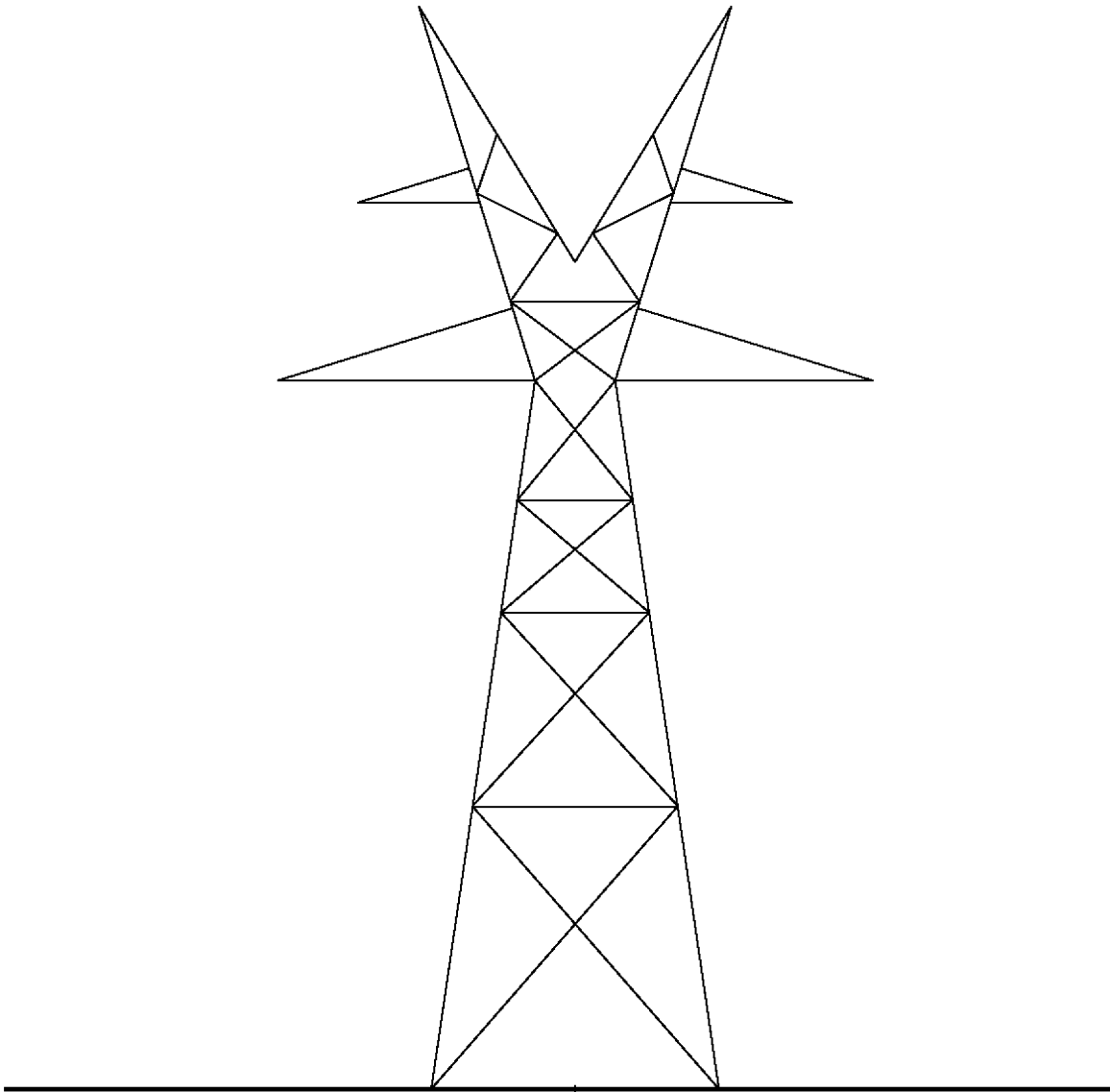


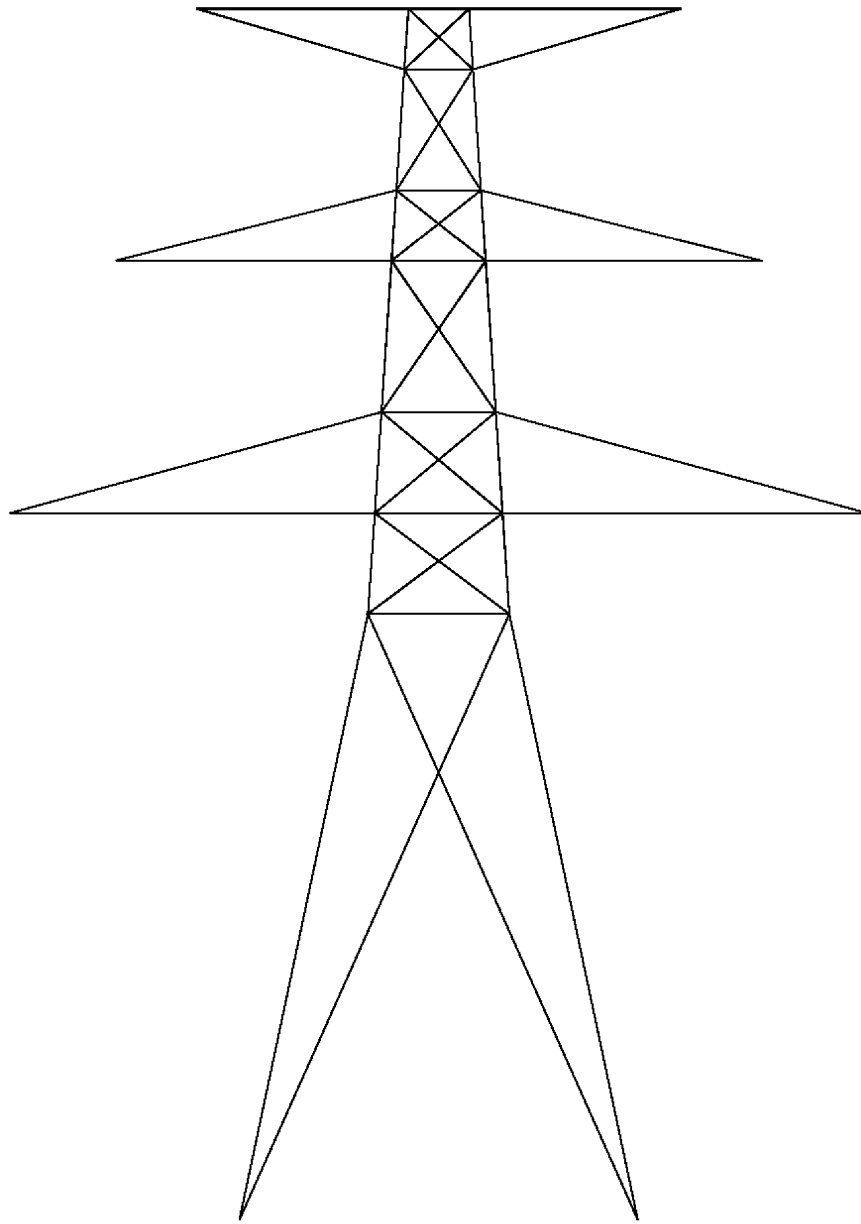
**Comanche Peak Nuclear Power Plant, Units 3 & 4  
COL Application  
Part 3 - Environmental Report**



TYPICAL 345 KV  
V TYPE TOWER  
TANGENT TOWER

**Figure 3.7-2 Transmission Standard Towers (Sheet 1 of 6)**

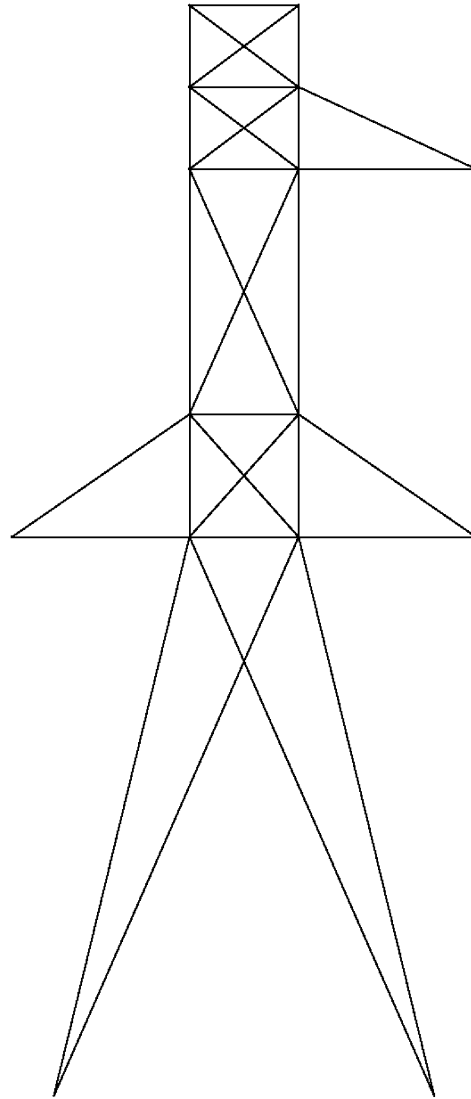
**Comanche Peak Nuclear Power Plant, Units 3 & 4  
COL Application  
Part 3 - Environmental Report**



**TYPICAL 345 KV  
V TYPE TOWER  
70-DEG ANGLE TOWER**

**Figure 3.7-2 Transmission Standard Towers (Sheet 2 of 6)**

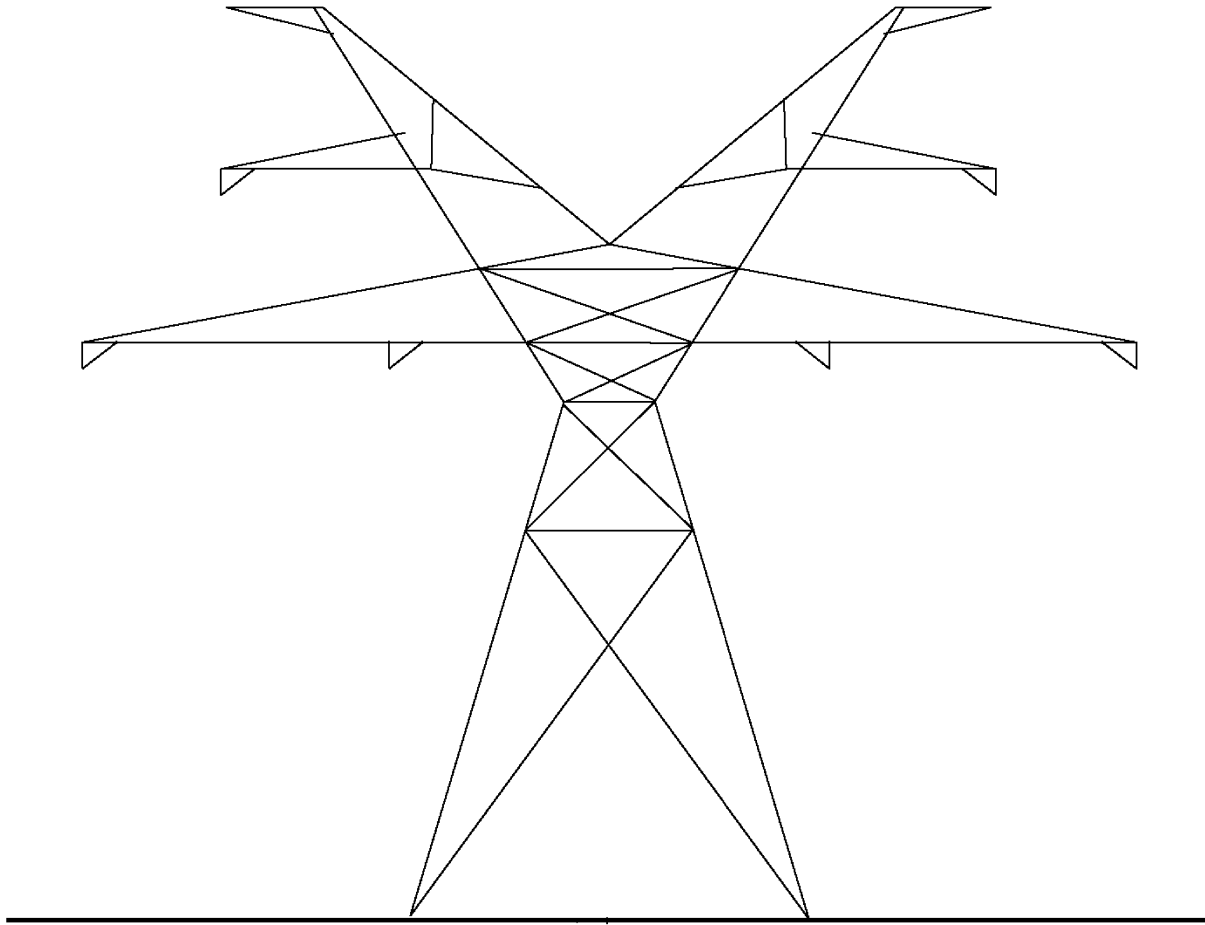
**Comanche Peak Nuclear Power Plant, Units 3 & 4  
COL Application  
Part 3 - Environmental Report**



TYPICAL 345 KV  
V TYPE TOWER  
90-DEG DEADEND TOWER  
(2 REQ'D FOR DBL CIRCUIT)

**Figure 3.7-2 Transmission Standard Towers (Sheet 3 of 6)**

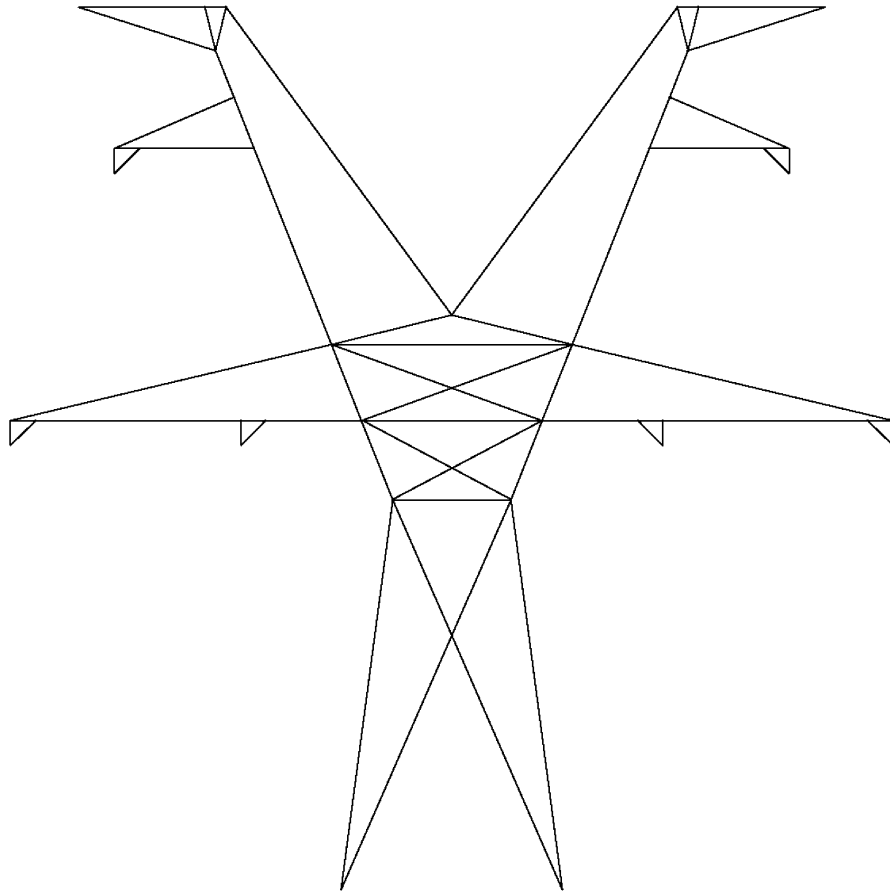
**Comanche Peak Nuclear Power Plant, Units 3 & 4  
COL Application  
Part 3 - Environmental Report**



**TYPICAL 345 KV  
V TYPE TOWER  
25-DEG ANGLE TOWER**

**Figure 3.7-2 Transmission Standard Towers (Sheet 4 of 6)**

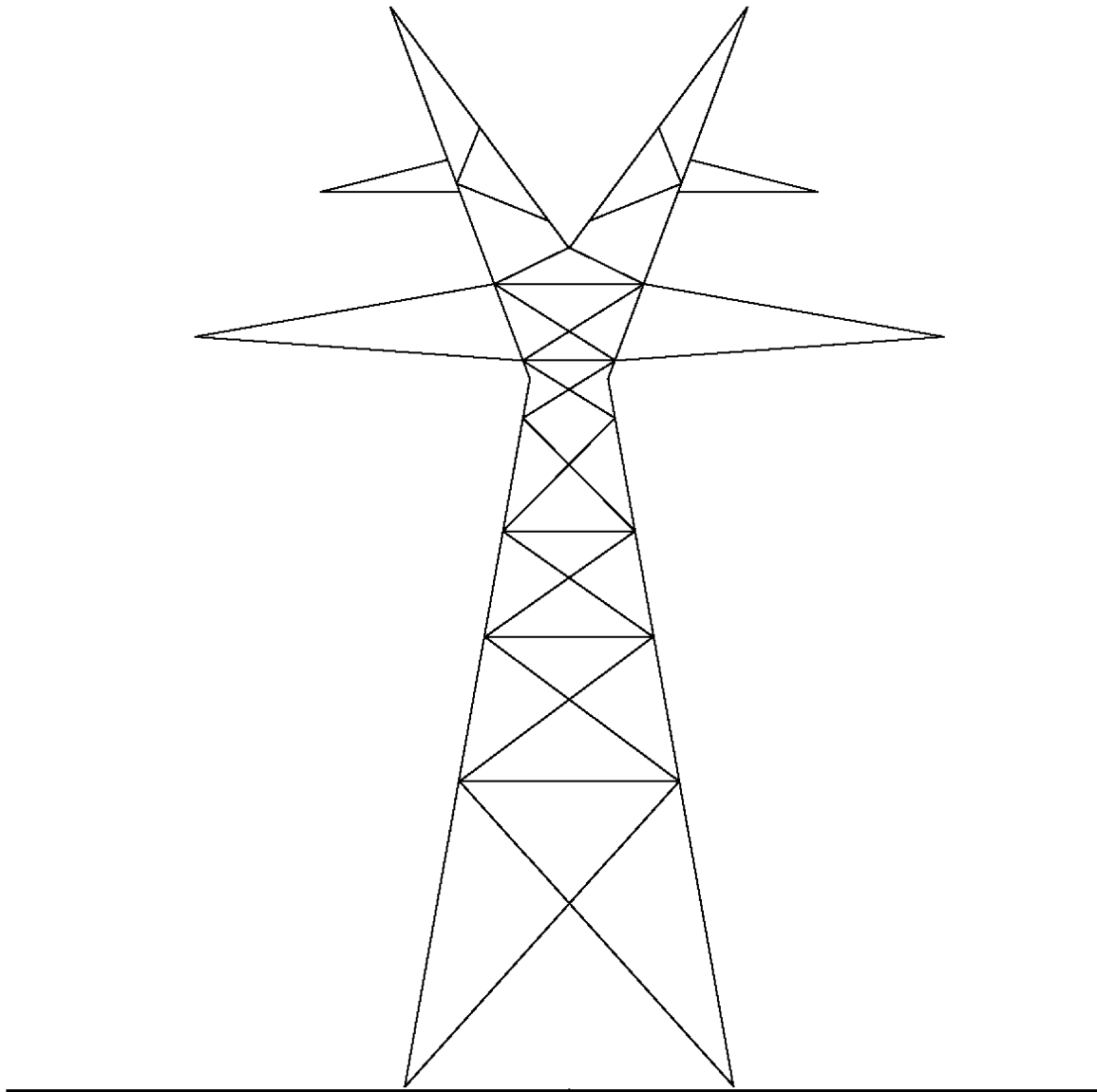
**Comanche Peak Nuclear Power Plant, Units 3 & 4  
COL Application  
Part 3 - Environmental Report**



**TYPICAL 345 KV  
V TYPE TOWER  
10-DEG ANGLE TOWER**

**Figure 3.7-2 Transmission Standard Towers (Sheet 5 of 6)**

**Comanche Peak Nuclear Power Plant, Units 3 & 4  
COL Application  
Part 3 - Environmental Report**



TYPICAL 345 KV  
V TYPE TOWER  
5-DEG TOWER

**Figure 3.7-2 Transmission Standard Towers (Sheet 6 of 6)**