

Trans. w/ltor
6-1-66 NTB
AMOT #2 to PSAR

Job
373
Box 2
shelf 11691

50-247

1.0 SITE AND ENVIRONMENT

1.1 SUMMARY OF CONCLUSIONS

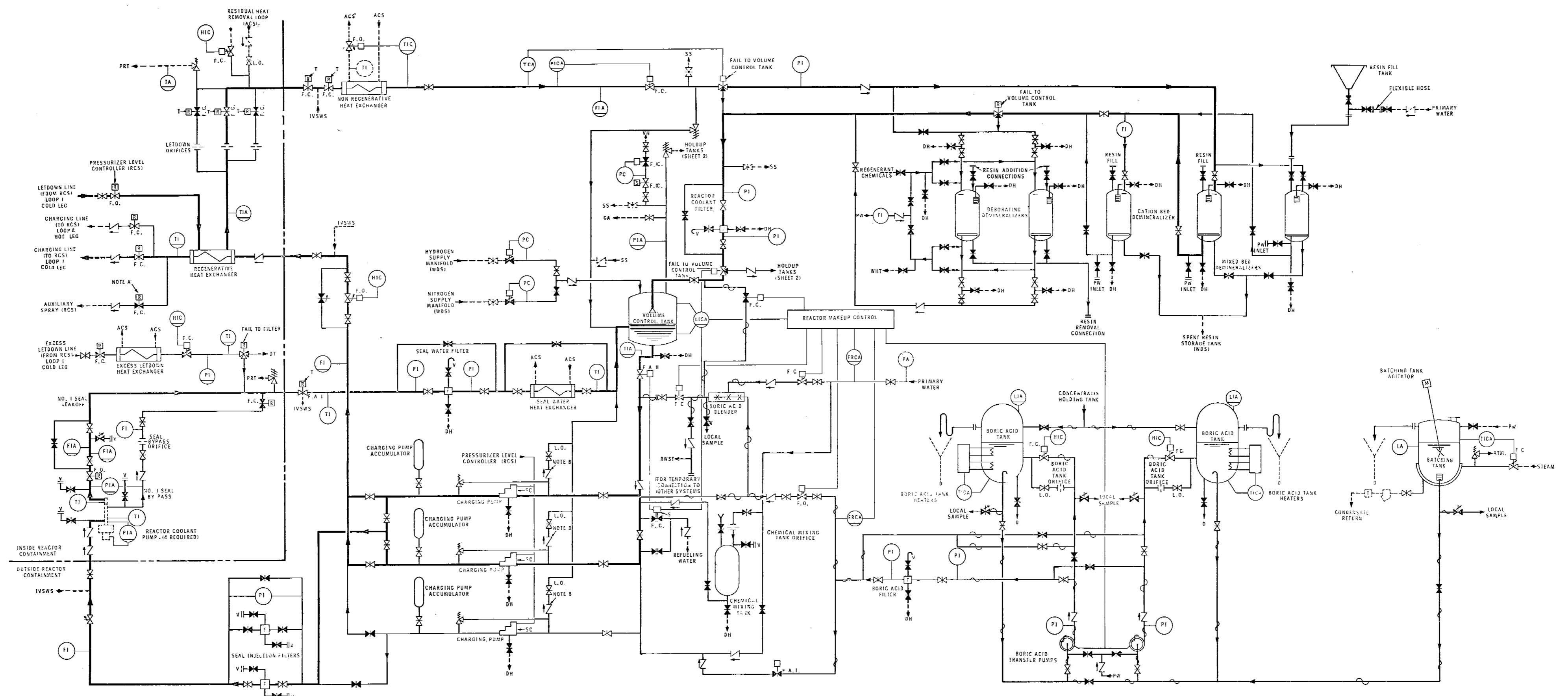
This volume of the PSAR sets forth the site and environmental data which together form a basis for the criteria for designing the facility and for evaluating the routine and accidental release of radioactive liquids and gases to the environment. These data support the conclusion that there will be no undue risk to public health and safety with the plant designed as planned and the environmental characteristics described in this volume. The strength of this conclusion rests not only upon the data themselves but upon the favorable opinions (also included in this volume) of several independent consultants to the Applicant, each speaking within his particular area of expertness, -- health physics, demography, geology, seismology, hydrology or meteorology, as the case may be.

The task of evaluating the environmental characteristics of the area has been facilitated by the significant fact that for ten years studies and measurements of these characteristics have been made, whereas for almost three years measurements have been made of the effects on environment of releases from an operating nuclear power facility, the facility the subject of AEC License No. DPR-5.

Careful projections have been made of the probable growth of population in the area and these projections have been taken into account in plant design both as to control of accidents and as to assumptions about operation.

Only Forty-six people reside within 1/2 mile of Unit #2 and only 100 live within one mile. Approximately 53,000 people now reside within a 5-mile radius of the proposed facility. The largest concentration of population is in the City of Peekskill (Population 19,000; estimated 1985 population, 30,000) the center of which is about 2 1/2 miles northeast of the site. The most densely populated 15 degree sector, within 5 miles, is toward Peekskill to the northeast and contains 12,120 people.

The 1960 population within a 15-mile radius of the site was 326,930 whereas the 1980 estimated population (according to the "compromise" projection favored by the consultant involved) is 670,210. The projections do not indicate, and there is no reason otherwise to conclude, that the land usage within this radius will shift appreciably



- LEGEND:**
- IVSWS - ISOLATION VALVE SEAL WATER SYSTEM
 - ACS - AUXILIARY COOLANT SYSTEM
 - RCS - REACTOR COOLANT SYSTEM
 - WDS - WASTE DISPOSAL SYSTEM
 - SIS - SAFETY INJECTION SYSTEM
 - SS - SAMPLING SYSTEM
 - RWST - REFUELING WATER STORAGE TANK
 - WHT - WASTE HOLDUP TANK
 - SC - SPEED CONTROL
 - PRT - PRESSURIZER RELIEF TANK
 - F.A.I. - FAIL AS IS
 - F.C. - FAIL CLOSED
 - F.O. - FAIL OPEN
 - L.C. - LOCKED CLOSED
 - L.O. - LOCKED OPEN
 - PW - PRIMARY WATER
 - DT - DRAIN TANK
 - VH - VENT HEADER (IWDS)
 - DH - DRAIN HEADER (IWDS)
 - GA - GAS ANALYZER
 - D - LOCAL DRAIN
 - V - LOCAL VENT
 - S - SAFETY INJECTION ACTUATION SIGNAL
 - T - TRIP ON HIGH CONTAINMENT PRESSURE
- NOTES:**
- A. VALVE FUNCTIONS AS ON-OFF VALVE AND RELIEF VALVE
 - B. SPRING LOADED CHECK VALVE

Chemical and Volume Control System - Sheet 1
Figure 9.2-1