



8-27

**— NOTICE —**

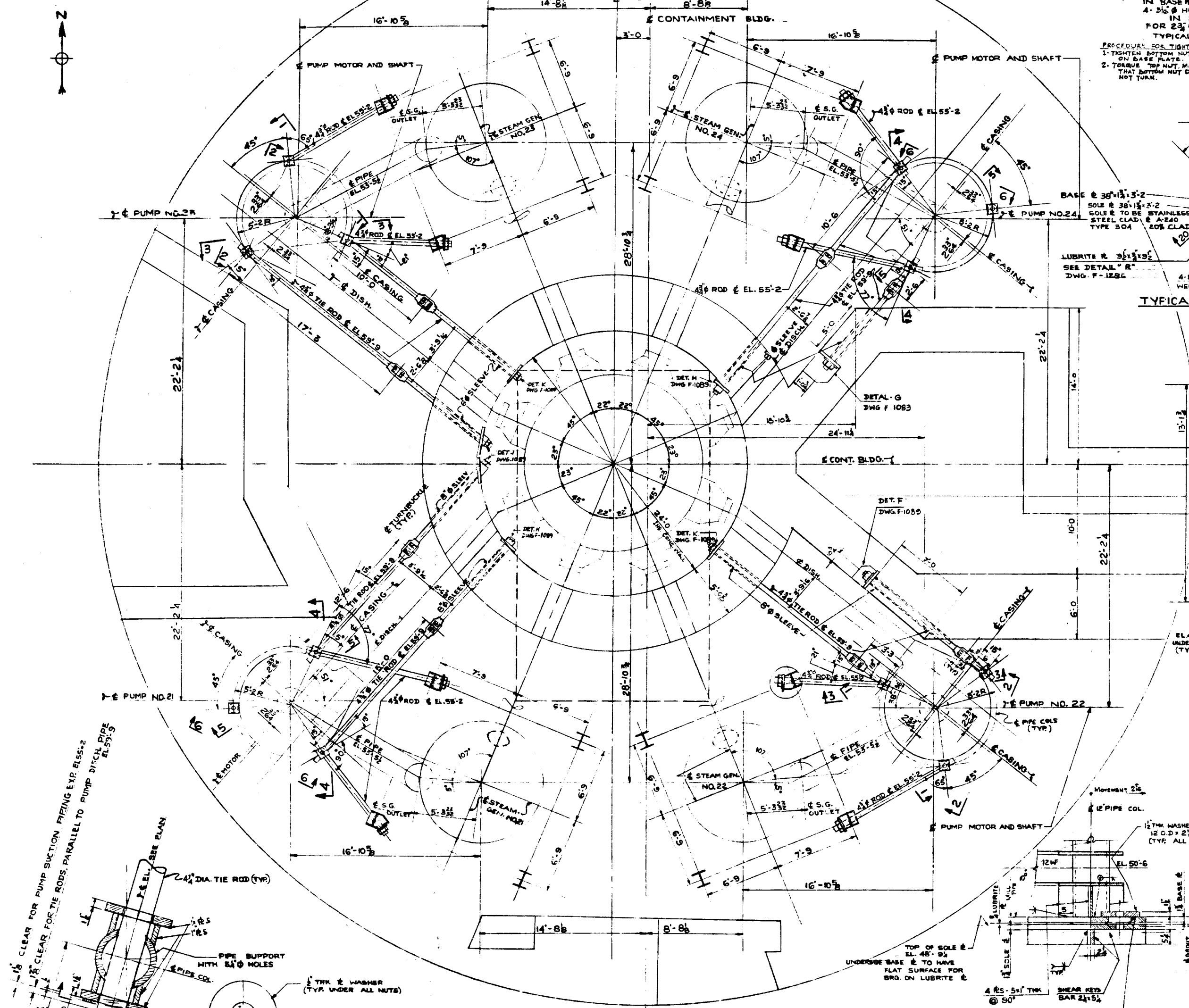
THE ATTACHED FILES ARE OFFICIAL RECORDS OF THE DIVISION OF DOCUMENT CONTROL. THEY HAVE BEEN CHARGED TO YOU FOR A LIMITED TIME PERIOD AND MUST BE RETURNED TO THE RECORDS FACILITY BRANCH 016. PLEASE DO NOT SEND DOCUMENTS CHARGED OUT THROUGH THE MAIL. REMOVAL OF ANY PAGE(S) FROM DOCUMENT FOR REPRODUCTION MUST BE REFERRED TO FILE PERSONNEL.

DEADLINE RETURN DATE \_\_\_\_\_

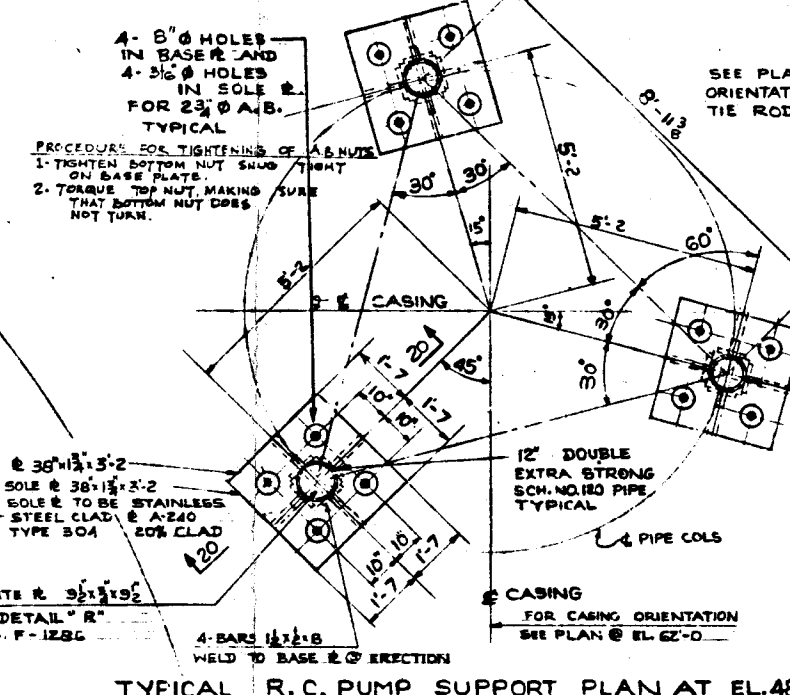
**RETURN TO REGULATORY CENTRAL FILES  
ROOM 016**

RECORDS FACILITY BRANCH

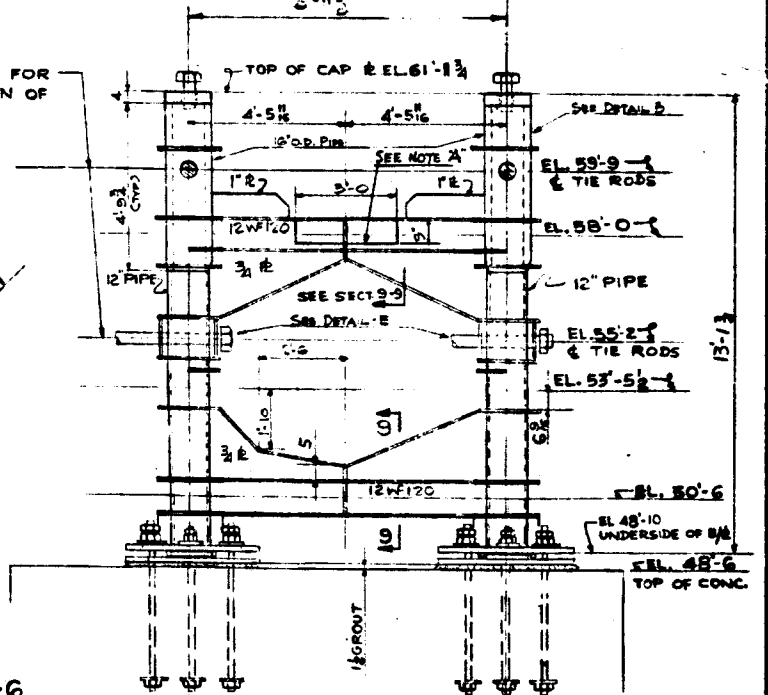
CEC 50-247 INDIAN POINT UNIT 2  
MISCELLANEOUS APPLICANT CORRESPONDENCE



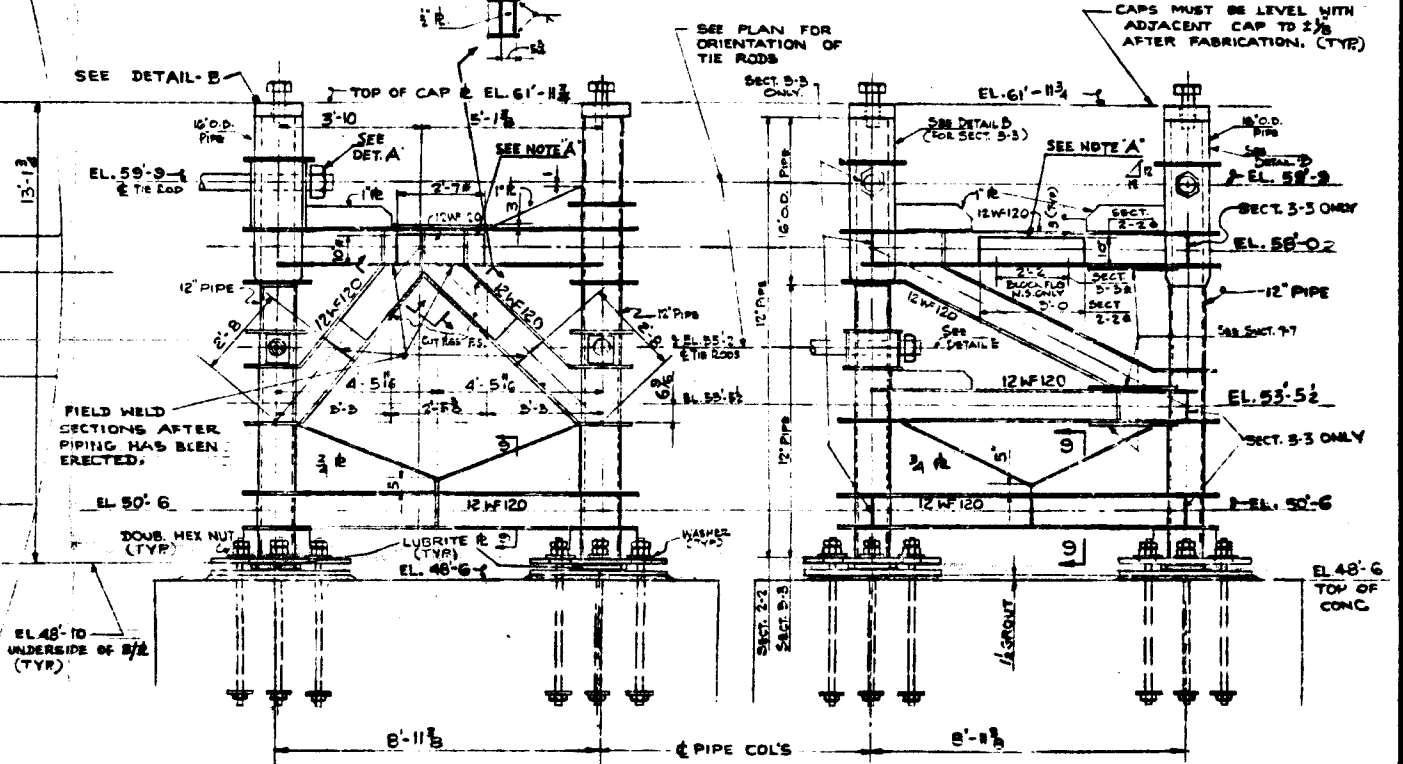
PLAN AT EL. 62'-0"  
 SCALE 1/4"=1'-0"



TYPICAL R.C. PUMP SUPPORT PLAN AT EL. 48'-6"  
 SCALE 1/2"=1'-0"

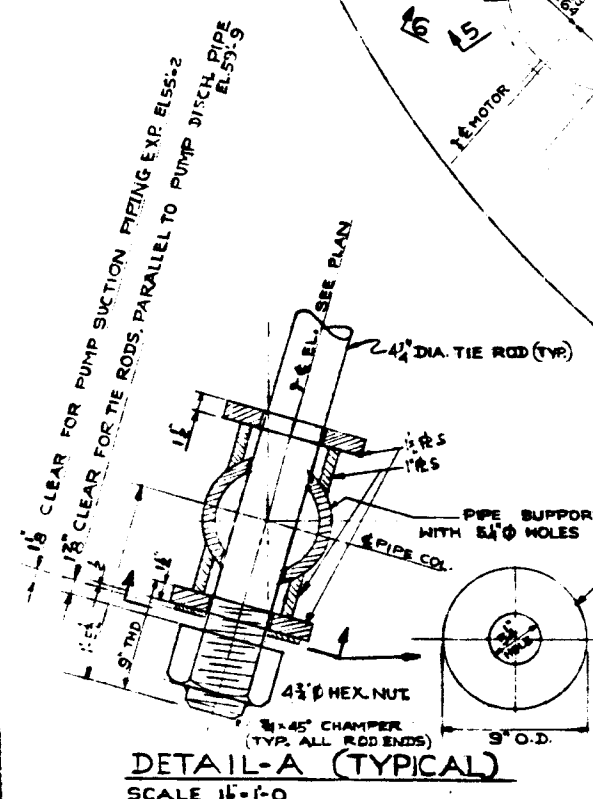


SECTION 4-4  
 SCALE 3/8"=1'-0"



SECTION 1-1  
 SCALE 3/8"=1'-0"

SECTION 2-2 NOTED  
 SCALE 3/8"=1'-0"



DETAIL-A (TYPICAL)  
 SCALE 1 1/2"=1'-0"

NOTE: TACK WELD ALL NUTS & TURNBUCKLES TO RODS AFTER ERECTION TO PREVENT ROTATION.

- NOTES:-
- FORCES FOR CRITICAL PIPE BREAK BASED ON 2500 PSI INTERNAL PRESSURE.
  - FORCES FOR PIPE BREAK ASSUMED ACTING IN ONLY ONE PIPE AT ONE TIME.
  - HORIZONTAL EARTHQUAKE ASSUMED ACTING @ C.O. OF UNIT BUT NOT ACTING AT THE SAME TIME AS PIPE BREAK.
  - SUPPORT DESIGNED FOR 0.9F, FOR PIPE BREAK LOAD.
  - FRICTION LOADS ON BASE PLATES BASED ON 0.10 COEFF. OF FRICTION FOR LUBRITE #25.
  - TIE RODS DESIGNED FOR 0.9F.
  - F<sub>y</sub> MEANS YIELD STRESS AND F<sub>u</sub> MEANS ULTIMATE STRESS.
- REFERENCE DWGS:-
- 9321-F-1286 STEAM-GENERATOR SUPPORTS SA-1
  - 9321-F-2533, F-2534, F-2535, F-2536 PRIMARY COOLANT SYSTEM PIPING.
  - F.P. 9321-2271 MODEL V10072 A1 SHAFT SEAL PUMP-FABRICATED CASING
  - 9321-F-1289 REACTOR COOLANT PUMP SUPPORTS SA-2
  - F.P. 9321-2279 R.C. PUMP - CASING FEET.

NO.	REVISION	DATE	BY	CHKD.	APP.
1	FINAL ISSUE				
2	ADDED NOTE A TO SECTION 1-1				
3	ADDED NOTE A TO PLAN				
4	ADDED NOTE A TO SECTION 2-2				
5	ADDED NOTE A TO SECTION 3-3				
6	ADDED NOTE A TO SECTION 4-4				
7	ADDED NOTE A TO SECTION 1-1				
8	ADDED NOTE A TO SECTION 2-2				
9	ADDED NOTE A TO SECTION 3-3				
10	ADDED NOTE A TO SECTION 4-4				

WORK THIS SHEET WITH DWGS. F-1289 & F-1480  
 WESTINGHOUSE ELECTRIC CORPORATION  
 CONTAINMENT BUILDING  
 REACTOR COOLANT PUMP SUPPORTS  
 SHEET NO. 1  
 FOR  
 CONSOLIDATED EDISON COMPANY  
 INDIAN POINT GENERATING STATION  
 UNIT NO. 2  
 U. S. E. C. DWG. NO. 9321-F-1288-7  
 U. S. E. C. DWG. NO. A200172  
 UNITED ENGINEERS & CONSTRUCTORS INC.