



Commonwealth Edison  
One First National Plaza, Chicago, Illinois  
Address Reply to: Post Office Box 767  
Chicago, Illinois 60690

50-347

October 6, 1980

Mr. Harold R. Denton, Director  
Office of Nuclear Reactor Regulation  
U.S. Nuclear Regulatory Commission  
Washington, DC 20555

Subject: Zion Station Units 1 and 2  
Schedule for Z/IP Near Site  
Study Review  
NRC Docket Nos. 50-295 and 50-304

Dear Mr. Denton:

On Thursday, September 25, 1980, Mr. S. A. Varga and other members of the NRC staff met with Commonwealth Edison personnel at its corporate headquarters in Chicago, Illinois, to discuss, among other items, the review schedule for the Zion/Indian Point Near Site Study. Representatives from Consolidated Edison Company, the Power Authority of the State of New York, and Westinghouse Electric Corporation were also in attendance. Per Mr. Varga's request, a summary of the meeting's discussion on this topic is presented.

Commonwealth Edison presented an overview of the basic structure of the Zion/Indian Point (Z/IP) Study. A copy of the basic flow chart or structure diagram is included as Figure 1. Commonwealth Edison indicated that the utilities intended to integrate the probabilistic risk assessment, phenomenological, and mitigating features investigation phases of this effort into a single comprehensive report covering these topics.

In Figure 2, Commonwealth Edison presented the utilities best estimate schedule for completion of the work scope. As was indicated at the meeting, the dates illustrated in Figure 2 represent the dates upon which the utilities expect to have material available for their review. It was emphasized that this schedule included no contingency margins and, hence, was subject to change. However, barring no major and unforeseen problems, the final date for receipt of the completed report should not slip more than three to four weeks from the January 2, 1981, date in Figure 2. With this in mind, Commonwealth Edison estimates that the final report should be submitted to the NRC staff on or before February 15, 1981.

During the meeting Commonwealth Edison reaffirmed the utilities commitment to provide advance information packages to the NRC staff for their review. The following best estimate dates which are also subject to change were provided for specific data packages.

App'l  
10/3/11

8010160485

P

<u>Item</u>	<u>Tentative Submittal Date</u>
1. Generic and Plant Specific Data Packages	October 6, 1980
2. Systems Analysis Packages	October 31, 1980
3. Seismic Analysis Packages	
a) Zion	October 20, 1980
b) Indian Point	October 30, 1980
4. Plant Event Trees (Quantified but excluding containment consideration)	November 10, 1980
5. Non Seismic Special Events Analyses	October 31, 1980
6. Consequence Analysis	November 15, 1980

Finally, the manner in which the utilities expected to develop the mitigating features concepts and to treat them in a probabilistic risk assessment was discussed. The planned approach is to use the sequence identification and sequence related containment/phenomenological work to identify and quantify those threats to the containment that dominate risk and then to expand the conceptual development of mitigating features to address those threats. Then the risk reduction (or increase) offered by the specific features will be assessed. At this juncture, Mr. Varga indicated that the NRC staff was approaching the same effort in a slightly different manner. As a result, Commonwealth Edison agreed to an additional meeting in early December with the NRC staff and its consultants to explore the technology and mitigating features. It was felt that by that time both approaches will have matured to a degree sufficient for a fruitful comparison.

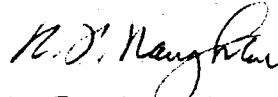
Commonwealth Edison looks forward to continuing exchanges in this area and awaits the NRC staff concurrence and suggested date for such an additional technology exchange meeting. In the interim, Commonwealth Edison will continue, on behalf of the other utilities, to keep the NRC staff informed of the progress on the Zion/Indian Point Near Site Study.

- 3 -

Please Address any questions that you may have concerning this matter to this office.

One (1) signed original and thirty-nine (39) copies of this letter are provided for your use.

Very truly yours,



W. F. Naughton  
Nuclear Licensing Administrator  
Pressurized Water Reactors

cc: Resident Office - Zion

# BASIC STRUCTURE OF ZION/INDIAN POINT STUDY

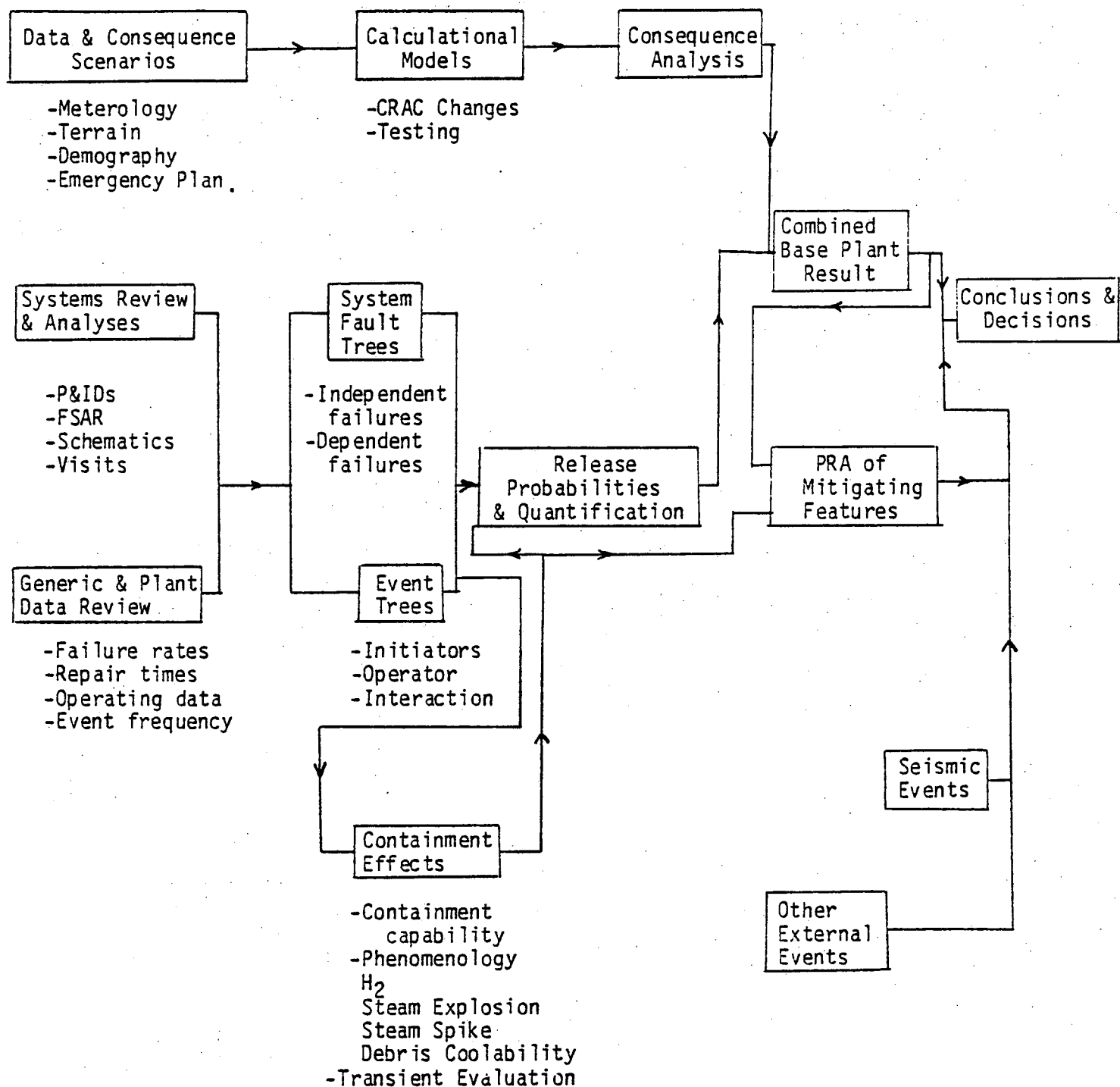


Figure 1

# ZION/INDIAN POINT PRA SCHEDULE

Deliverable	Completion Date	
	Zion 1 & 2	Indian Point 2 & 3
1. System Analysis	10/3	9/26
2. Data Packages	9/5	8/29
3. a. Event Trees & Descriptions	9/8	9/8
b. Event Tree First-Cut Quantification	10/11	10/3
c. Event Tree Second-Cut Quantification	11/7	11/7
4. Containment Analysis		
a. First Cut	9/5	9/5
b. Second Cut	10/30	10/30
5. Consequence Model	8/30	8/30
6. Seismic Analysis	9/15	10/10
7. Nonseismic Special Events Analysis	10/3	10/10
8. Consequence Analysis		
a. First Cut	9/30	9/30
b. Second Cut	10/10	10/10
9. Analysis Integration		
a. First Cut	11/17	11/17
b. Second Cut	11/24	11/24
10. Mitigating Features Proposed Modification	12/17	12/17
11. Report Preparation	1/2	1/2

Figure 2