

DEVICE	FUNCTION
20	ELECTRIC OPERATED VALVE
33	POSITION SWITCH (VALVE)
63	LIQUID OR GAS PRESSURE RELAY
71	LIQUID OR GAS LEVEL RELAY
42	MOTOR STARTER
52	AC CIRCUIT BREAKER
1	CONTROL SWITCH CONTACT CLOSED IN POSITION SHOWN :- C- CLOSE (START) T- TRIP (STOP) SC- SLIP CLOSE (SLIP START) ST- SLIP TRIP (SLIP STOP) O- OFF (AUTO NORMAL) CTO- CLOSE, TRIP, OFF PO- PULL OUT

**LEGEND**

**W-BF RELAY TERMINAL CONFIGURATION**

OC1			
01	02	03	04
017	018	019	020
09	010	011	012
BF			
013	014	015	016
021	022	023	024
05	06	07	08
OC2			

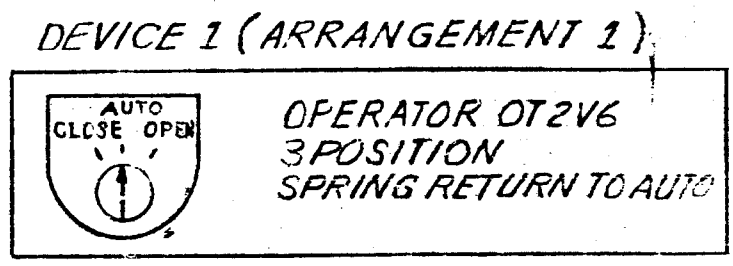
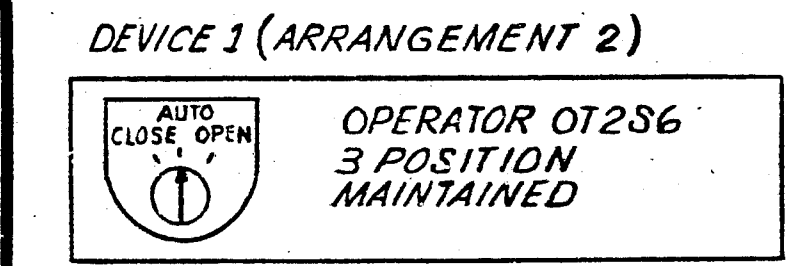
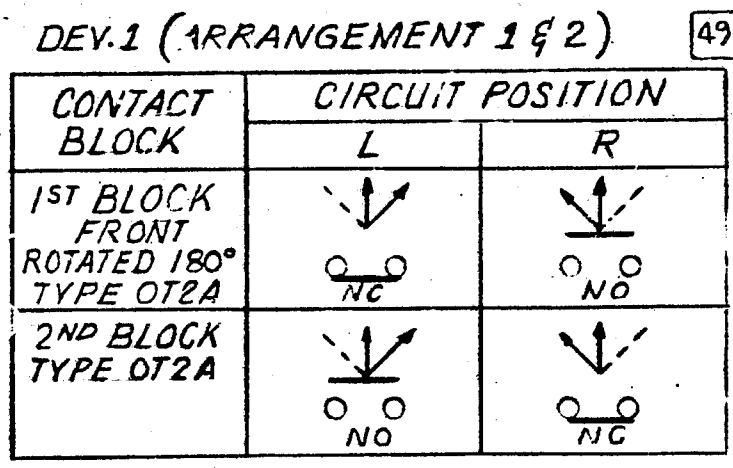
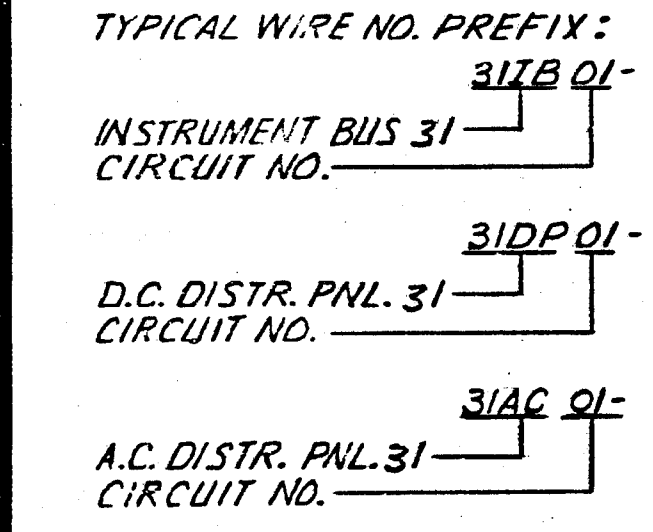
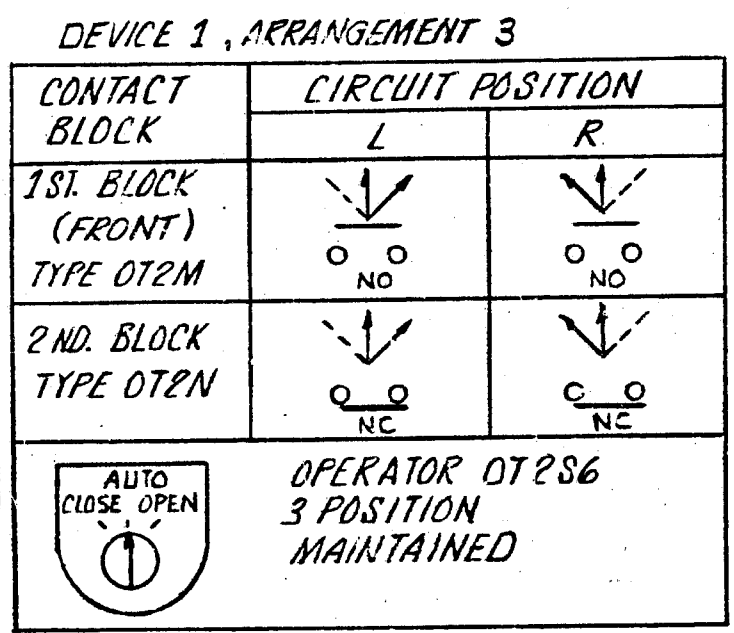
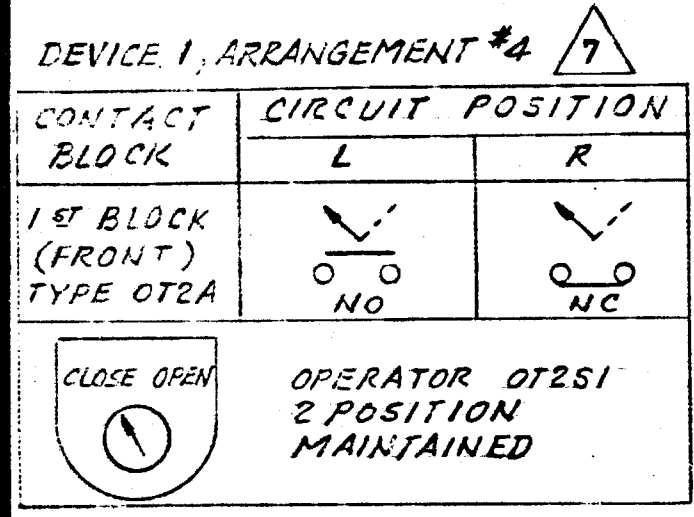
RELAY SUPPLIED WITH UNMARKED TERMINALS - NUMBERS ASSIGNED FOR LOCATION PURPOSES ONLY

EQUIPMENT & CABLE IDENTIFICATION NOS. PER CABLE & CONDUIT SCHEDULE 9321-LL-30103

- EQUIPMENT LOCATION SYMBOLS**
- 3 - 480V. SWGR. 31
  - 8 - 480V. MCC 32
  - 10 - 480V. MCC 34
  - 13 - 480V. MCC 37
  - 16 - LOCAL AT EQUIPMENT
  - 18 - CONTROL BLD'G
  - 19 - CONTAINMENT BLD'G.
  - 21 - FAN ROOM
  - 26 - INTAKE STRUCTURE
  - 25 - HEATER BAY
  - 50 - PENETRATION TUNNEL
  - 53 - SERVICE WATER VALVE PIT
  - 42 - FAN ROOM CONTROL CABINET
  - 43 - BATTERY ROOM
  - 20 - PRIMARY AUX. BLD'G.
  - 24 - TURB. GEN. BLD'G.
  - 48 - FLASH EVAPORATOR CONTROL STATION
  - 36 - B.F.P. TURBINE  
A- OIL CONSOLE  
B- OIL CONSOLE GAUGE BOARD
  - 17 - CONTROL ROOM PANEL  
SJ - COOLING WATER & AIR SUPERV. PANEL  
SL - CONT. BLDG. VENT & PRESSURIZATION SUPERV. PNL  
SB2 - SAFEGUARDS SUPERV. PANEL  
SC - FEEDWATER & CONDENSATE SUPERV. PANEL  
SE - TURBINE START-UP SUPERV. PANEL  
FAF - GEN. TURB. & B.F.P. TURB. FLIGHT PANE.  
SBI - SAFEGUARDS SUPERVISORY PANEL  
SN - ISOLATION VALVE SEAL WATER & IS.
  - 49 - 480V. MCC 33
  - 45 - AUX. FEEDWATER PUMPHOUSE
  - 22 - FUEL STORAGE BUILDING

**INDEX**

SHT. NO.	CIRCUIT
2, 2A, 2B, 2C	CONT. BLD'G. PURGE VALVES CONTROL & PRESSURIZATION SOVS.
3, 3A, 3B, 3C	CONT. BLD'G. PRESS. RELIEF VALVE CONTROL & PRESSURIZATION SOVS.
5 & 5A	SERVICE & INSTRUMENT AIR EMERGENCY MAKE-UP & DRYER BY-PASS VALVE CONTROL SOVS.
6 & 6A	B.F.P. TURBINES OIL PUMP TEST
7 & 7A	FLASH EVAPORATOR DISTILLATE FLOW CONTROL, DUMP & BRINE HEATER CONDENSATE DUMP VALVE CONTROL SOLENOIDS & ACID PUMP
8 & 6A	AUX. BOILER FEED PUMPS MAKE-UP & CONDENSATE DUMP TO STORAGE TANK
9 & 9A	CONDENSATE EMERG. BY-PASS & STORAGE TANK LEVEL CONTROL
10 & 10A	AUX. BOILER FEED PUMP 31 RECIRC. VLV. (AEPRI)
11 & 11A	" " " " 33 " " (AEPRI)
12, 12A, & 12B	CONT. BLDG. PERSONNEL LOCK PRESSURE GAUGE SOLENOID VALVES
13 & 13A	CONTAINMENT RECIRC. AIR UNITS FLOW CONTROL VALVES
14, 14A, & 14B	CONTAINMENT PRESSURIZATION FLOW TRANSMITTER BY-PASS SOLENOIDS & TRIP MAKE-UP CONTROL SOLENOID
15, 15A, & 15B	SERVICE WATER CONTROL VALVES
16 & 16A	B.F.P. SEAL WATER COLLECTING TANK DRAIN VLV. & HTR. DRAIN PUMPS COLD INLV. VALVE
17, 17A, & 17B	STEAM GENERATOR SAMPLE & BLOW-DOWN ISOLATION VALVES
19 & 19A	CONDENSER AIR REMOVAL SYS. STEAM SUPPLY PENETRATION ISOLATION VALVES - INSTRUMENT AIR ISOLATING VALVE PCV-1228
20 & 20A	CONDENSER HOTWELL SAMPLE VALVES
21 & 21A	MAIN STEAM ISOLATION VALVES
22, 22A & 22B	DELUGE VALVES
23 & 23A	PRIMARY & REFUELING WATER STORAGE TANK TEMPERATURE CONTROL VALVE
24 & 24A	FAN COOLER CONDENSATE MEASURING SYSTEM
25 & 25A	CONTAINMENT RADIATION MONITOR ISOLATION VALVES
26 & 26A	CONDENSER AIR REMOVAL SYSTEM STEAM SUPPLY VALVES
27 & 27A	PENETRATION ISOLATION VALVES
27 & 27A	POST ACCIDENT CONTAINMENT VENT. SYSTEM 1
28 & 28A	FUEL STG. VENT. SYSTEM
29 & 29A	AUX. FEED PUMP 32 STM. SUPPLY ISOL. VLVs.
30 & 30A	TURB. HALL CONTROL AIR EXHAUST SYSTEM



REV. NO.	DATE	DESCRIPTION	ENGR	SUP ENG
8	7/19/78	AS BUILT & FINAL ISSUE	TP	WJR GCD
7	11/20/75	ADDED SHEETS 30 & 30A TO INDEX AB-844	WJR	WJR GCD
6	11/15/73	FIRST ISSUE FOR AP. ROVAL	WJR	WJR GCD

ENGINEER: *William P. Robinson*  
STATE REG. NEW YORK NO. 42453  
UNITED ENGINEERS & CONSTRUCTORS INC.

WESTINGHOUSE ELECTRIC CORPORATION  
FOR CONSOLIDATED EDISON COMPANY  
INDIAN POINT GENERATING STATION - UNIT NO. 3

**SCHEMATIC DIAGRAM**  
**MISC. SOLENOID VALVES**

SHEET NO. 1

U.E. & C. DWG. NO. **9321-LL-31313**  
CON. ED. CO. DWG. NO. **D202367**

RECORD FILM