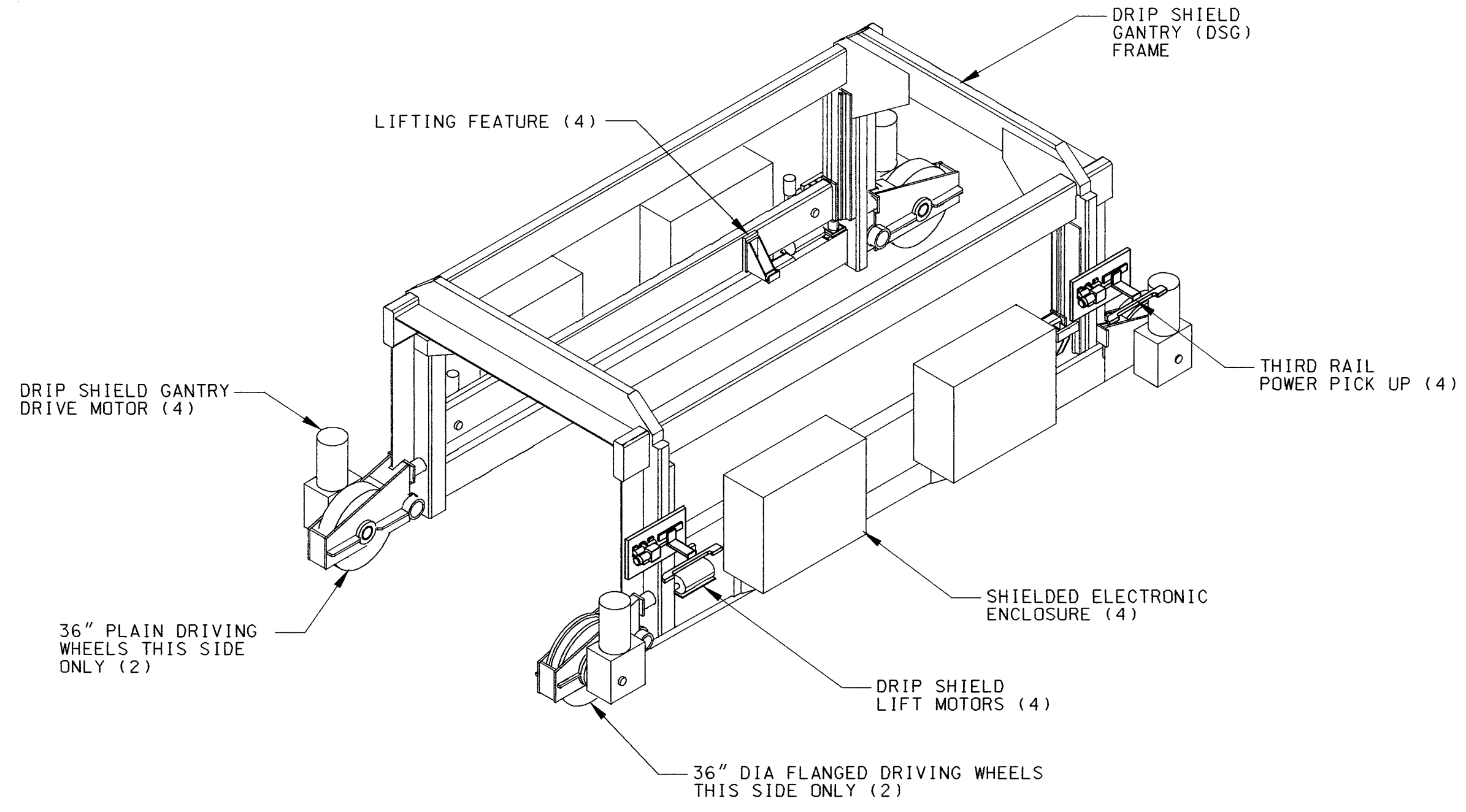
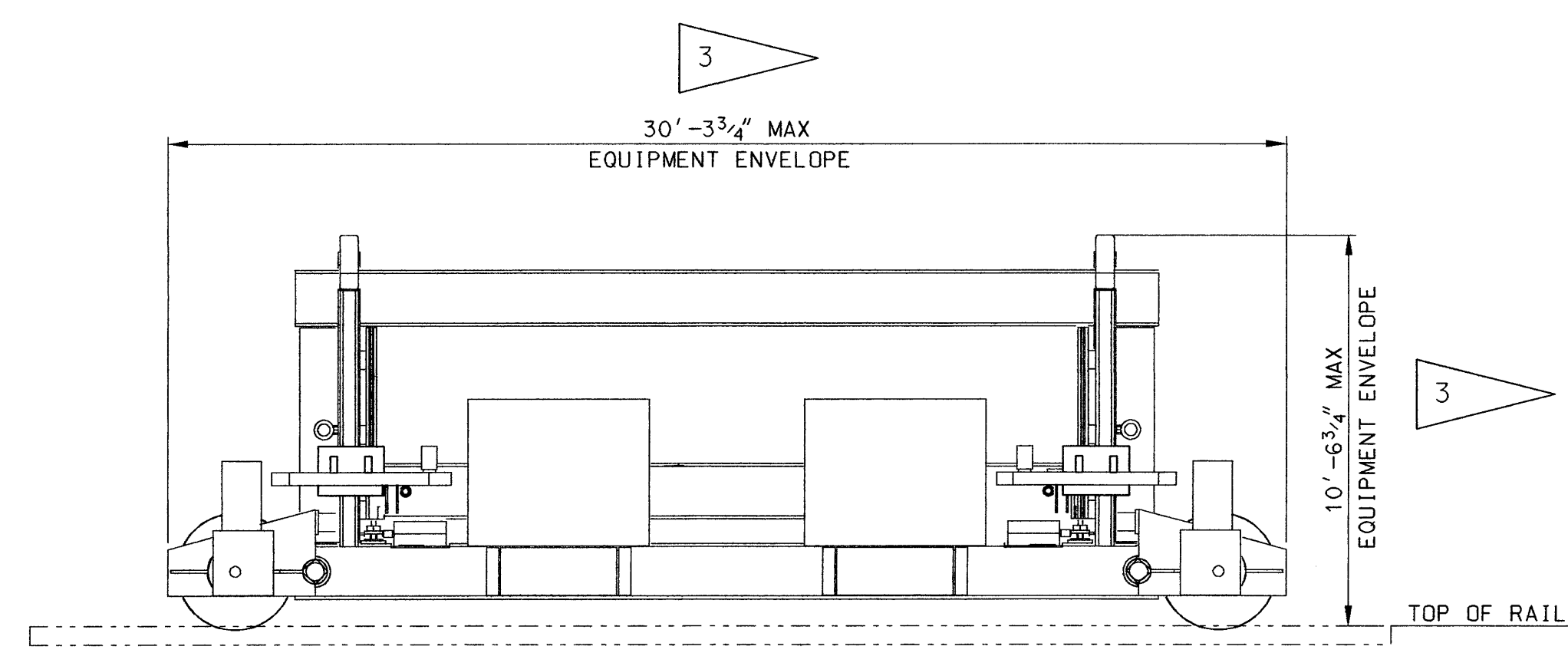


PLAN VIEW

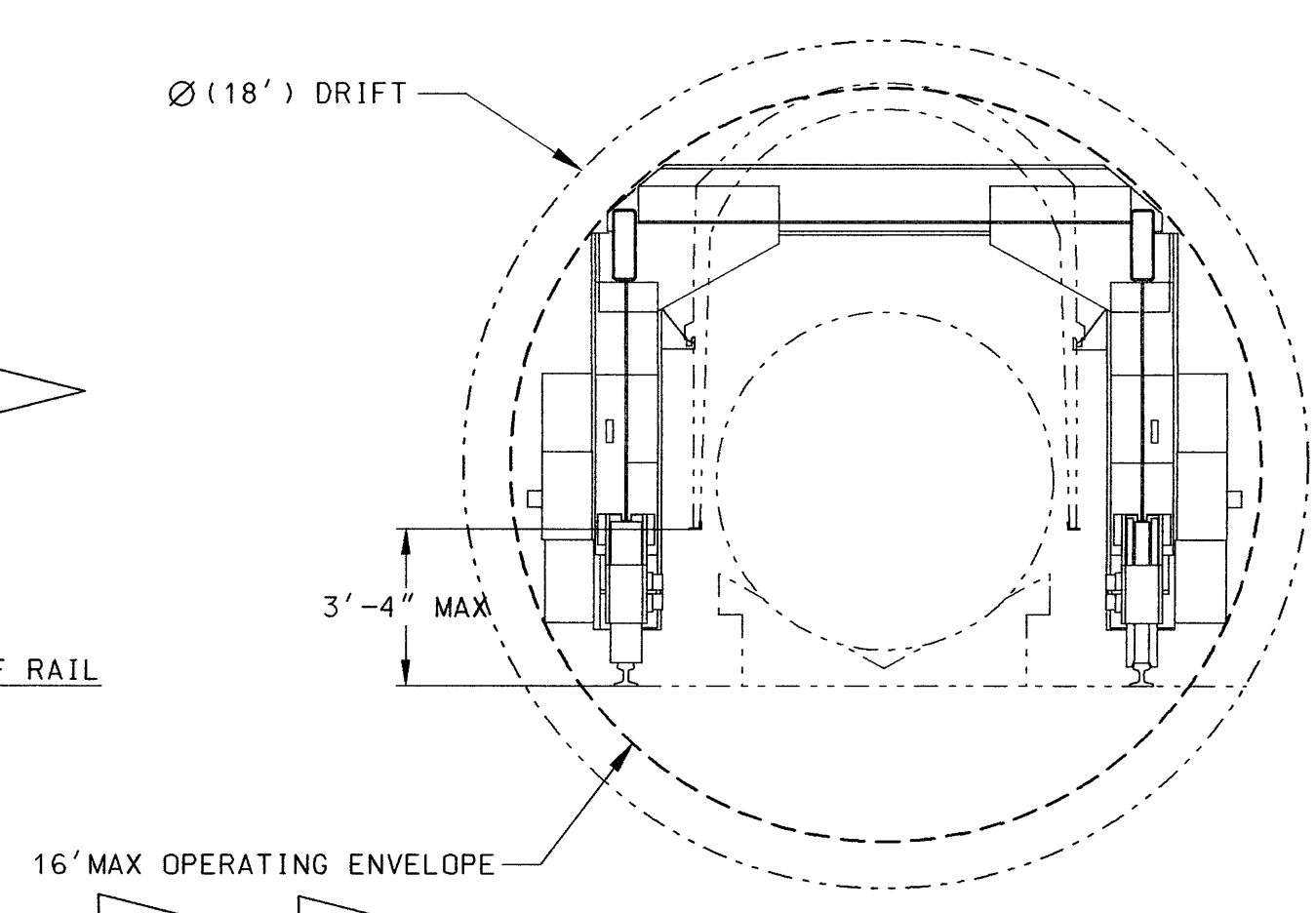


NOTES:

- THIS DRAWING ILLUSTRATES ENVELOPE AND INTERFACE REQUIREMENTS. OTHERWISE, THE CONFIGURATION OF EQUIPMENT SHOWN ON THIS DRAWING, INCLUDING REFERENCED DIMENSIONS, IS CONCEPTUAL. FINAL EQUIPMENT DESIGN WILL BE DETERMINED BY THE EQUIPMENT DESIGNER IN ACCORDANCE WITH THE EQUIPMENT SPECIFICATION.
- EQUIPMENT WEIGHT:  
EQUIPMENT WEIGHT LOADED: 100 TONS (MAX)
- ENVELOPES:
  - IN THE SURFACE FACILITIES, ON THE SURFACE AND THROUGH THE NORTH PORTAL, WHEN THE DRIP SHIELD GANTRY IS ON THE STRAIGHT SECTION OF TRACK, ADD SIX INCHES (6") MINIMUM TO THE STATED "EQUIPMENT ENVELOPE" TO OBTAIN THE "CLEARANCE ENVELOPE".
  - ON THE SURFACE, IN THE ACCESS MAIN AND WITHIN THE EMPLACEMENT DRIFT TURNOUT, WHEN THE DRIP SHIELD GANTRY IS NEGOTIATING CURVED TRACK SECTION, ADD TWELVE INCHES (12") MINIMUM TO THE STATED "EQUIPMENT ENVELOPE" TO OBTAIN THE "CLEARANCE ENVELOPE". THIS IS TO ALLOW FOR VEHICLE "OVERHANG" DURING CURVE NEGOTIATION.
  - IN THE HEAVY EQUIPMENT MAINTENANCE FACILITY (HEMF) ALLOW SIX FEET (6') TO THE STATED "EQUIPMENT ENVELOPE" TO OBTAIN THE "MAINTENANCE ENVELOPE".
  - IN THE EMPLACEMENT DRIFT THE DRIP SHIELD GANTRY SHALL OPERATE WITHIN THE SIXTEEN FEET (16') DIAMETER "OPERATING ENVELOPE" INDICATED IN VIEW B, WHEN THE DRIP SHIELD IS IN ITS FULLY RAISED POSITION IT ENCRAGES OUTSIDE THE 16' DRIP SHIELD EMPLACEMENT GANTRY OPERATING ENVELOPE BY 2".
- THE SIXTEEN FEET (16') OPERATING ENVELOPE IS DERIVED FROM THE EIGHTEEN FOOT (18') MINIMUM EMPLACEMENT DRIFT DIAMETER MINUS ONE FOOT (1') ALL AROUND AS CONSERVATIVE DIMENSION TO ALLOW CLEARANCE FOR GROUND SUPPORT, BOLT HEADS ETC. THIS DIMENSION APPLIES ONLY WITHIN THE EMPLACEMENT DRIFT FOR THE DRIP SHIELD GANTRY AND NOT DRIP SHIELD EMPLACEMENT OPERATION.

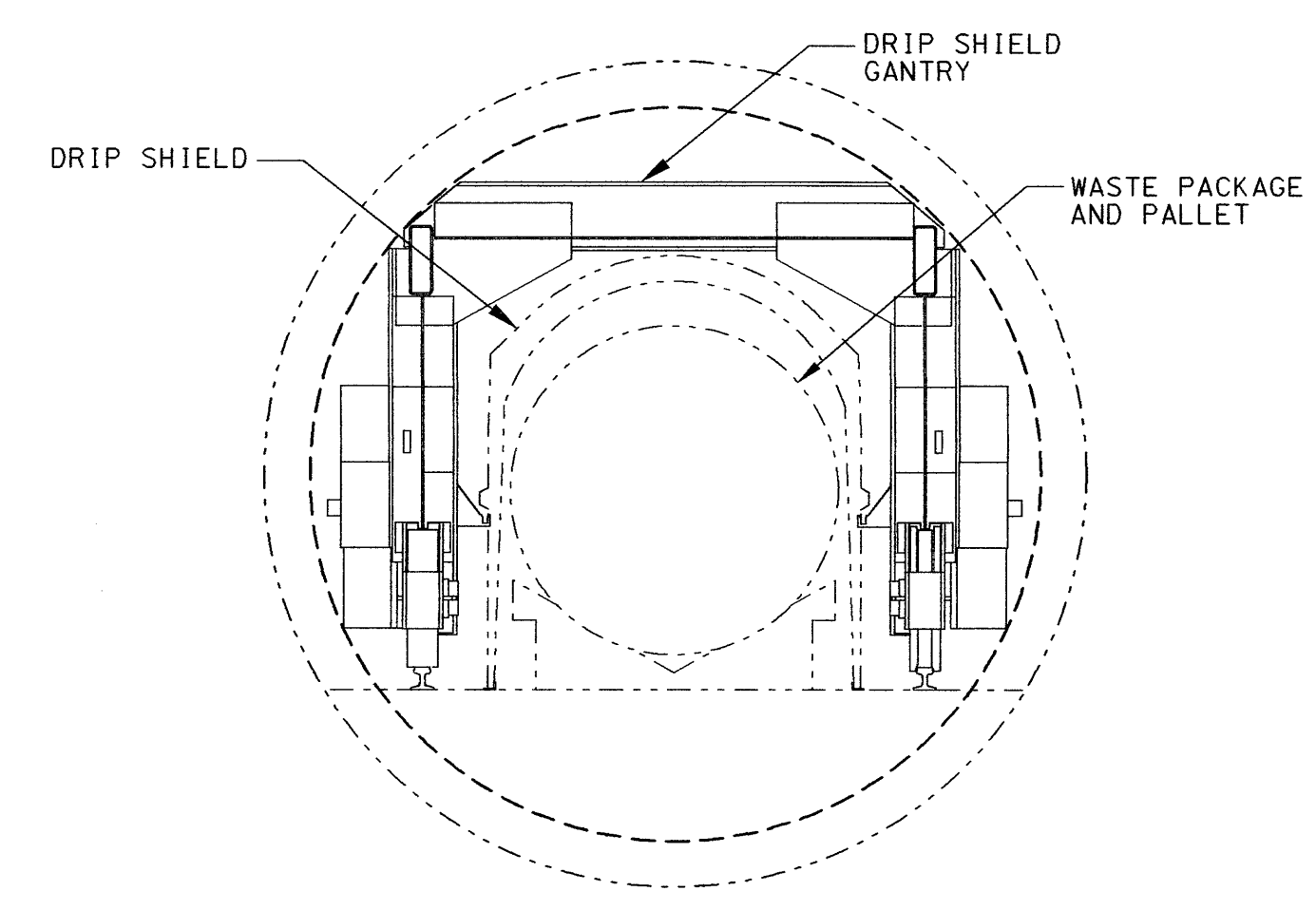


ELEVATION



END VIEW

DRIP SHIELD IN RAISED POSITION



END VIEW

DRIP SHIELD IN LOWERED POSITION

REVISION NOTES

- REVISION DRIVEN BY CR-11263.
- CHANGED OPERATING ENVELOPE TO EQUIPMENT ENVELOPE.
- MOVED THIRD RAIL IN ALL VIEWS. CAUSING SUBSTANTIAL REDRAW.
- UPDATED EQUIPMENT NUMBER.
- REVISED NOTES AND ADDED NOTE FLAGS.

REFERENCE DRAWINGS

DOCUMENT ID	TITLE
800-M00-W150-00101-000	DRIFT CROSS SECTION SHOWING EMPLACED WASTE PACKAGE AND DRIP SHIELD

EQUIPMENT NUMBER

800-HE00-EE0-00002

B	SEE REVISION NOTES. REDRAWN	10-25-07	SH	MV	RT	MJ	HJ	N/A	NH
A	ISSUED FOR LA	5-10-07	SH	MV	RT	MJ	HJ	N/A	NH
REV	DESCRIPTION	DATE	DRG	CHK	EGS	PE	DEM	N/A	OE

APPROVALS		INITIAL/DATE	REVISION HISTORY						
ORIGINATOR	S. HANRAHAN	SH 5-4-07	<b>U.S. DEPARTMENT OF ENERGY</b> Office of Civilian Radioactive Waste Management <b>BECHTEL</b> Management and Operation of the Office of SAIC COMPANY, LLC Civilian Radioactive Waste Management Program <b>EMPLACEMENT AND RETRIEVAL DRIP SHIELD EMPLACEMENT GANTRY MECHANICAL EQUIPMENT ENVELOPE</b>						
CHECKER	M. VOEGELE	MV 5-4-07							
ENGINEERING GROUP SUPERVISOR	R. THORNLEY	RT 5-4-07							
PROJECT ENGINEER	M. JOHNSON	MJ 5-10-07							
DISCIPLINE ENGINEERING MANAGER	H. JALALI	HJ 5-9-07							
SAFETY CLASSIFICATION	NON-ITS & NON-ITW	800-MJ0-HE00-00201-000	DOCUMENT IDENTIFIER						
SIZE	D	SCALE	NONE	CAD FILENAME		800MJ0HE0000201.DGN		REV	00B
DATE CONCURRENCE	NH	5-6-07	CAGE CODE:						

THIS DRAWING IS PRELIMINARY AND NOT INTENDED FOR CONSTRUCTION. PROCUREMENT OR FABRICATION.