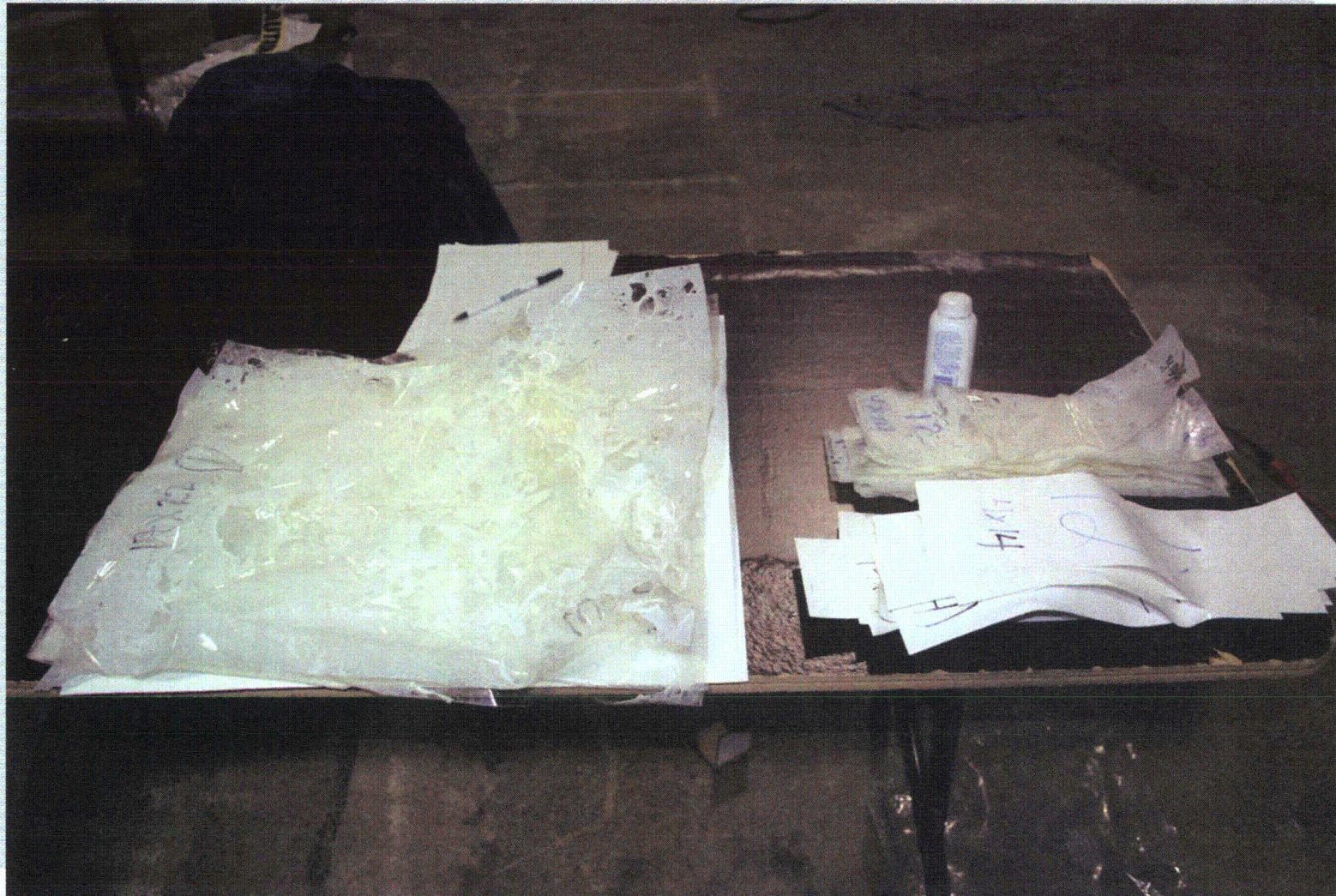
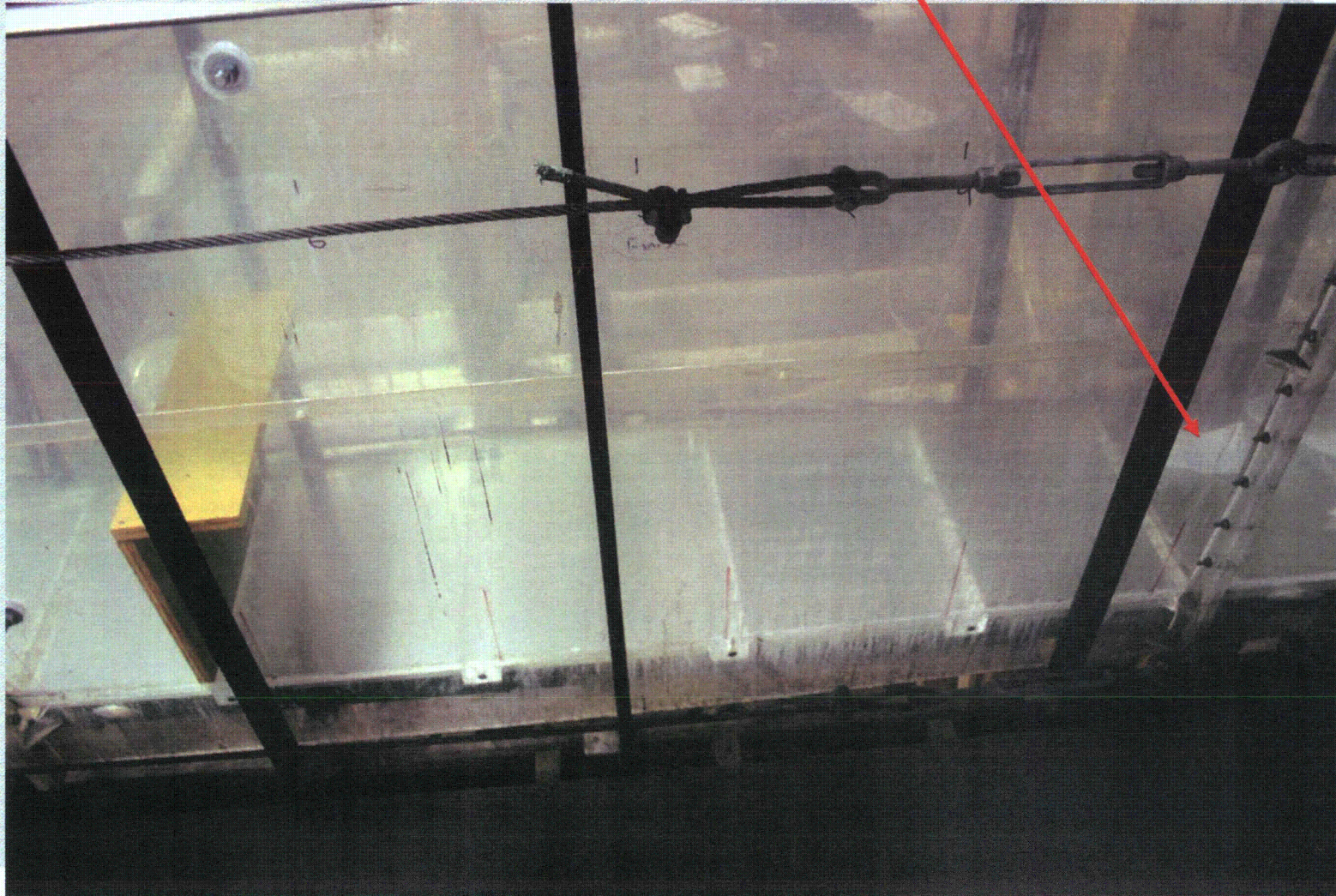


Debris transport test – Series 1000 Electromark labels



Test 6 Labels and Misc

Debris transport test – closest debris on right



Test 6 Labels and Misc

Debris transport test – closest debris stopped and in descent



Test 6 Labels and Misc

Debris transport test – labels and tags settled over about 5 feet



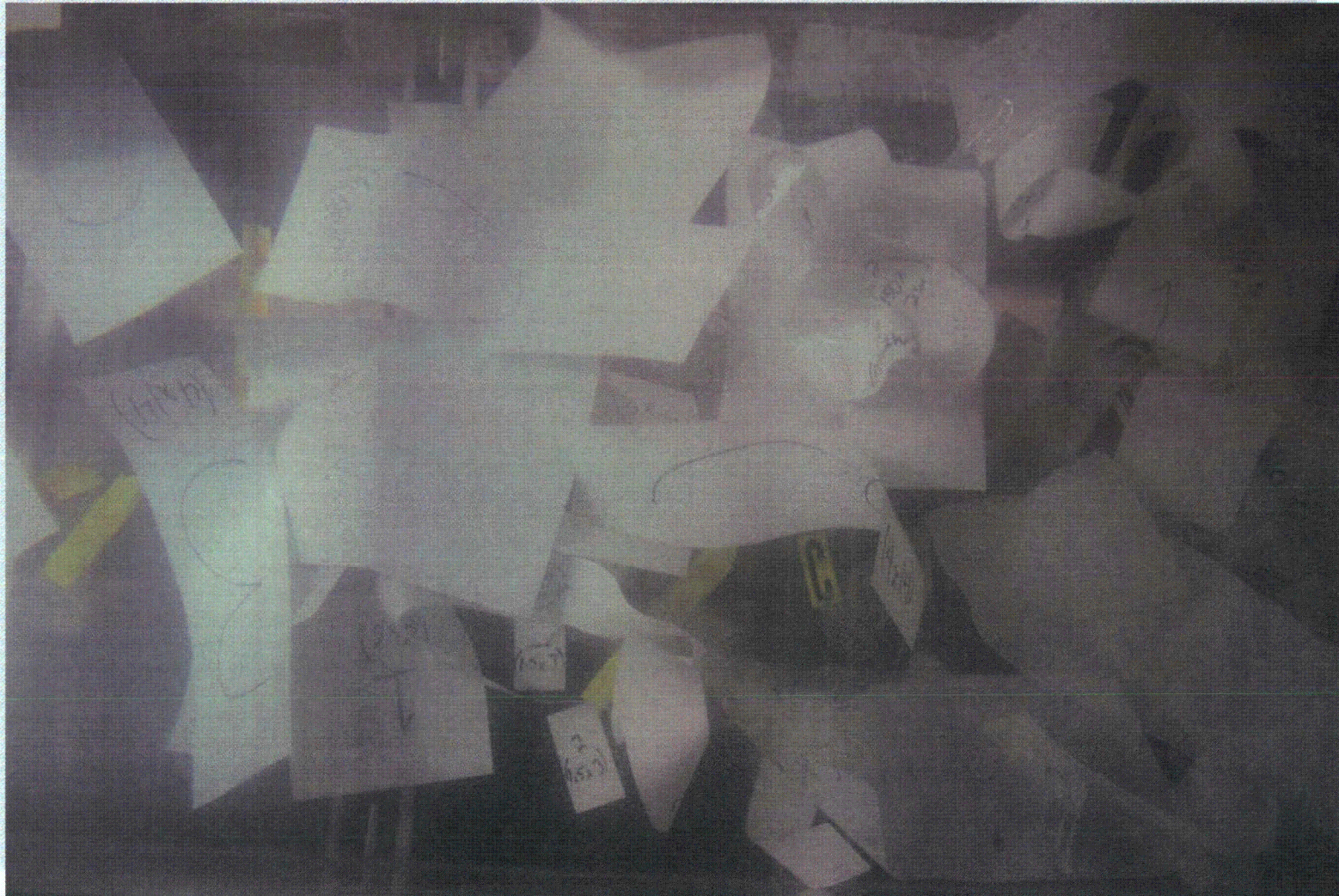
Test 6 Labels and Misc

Debris transport test – labels and tags under drop zone



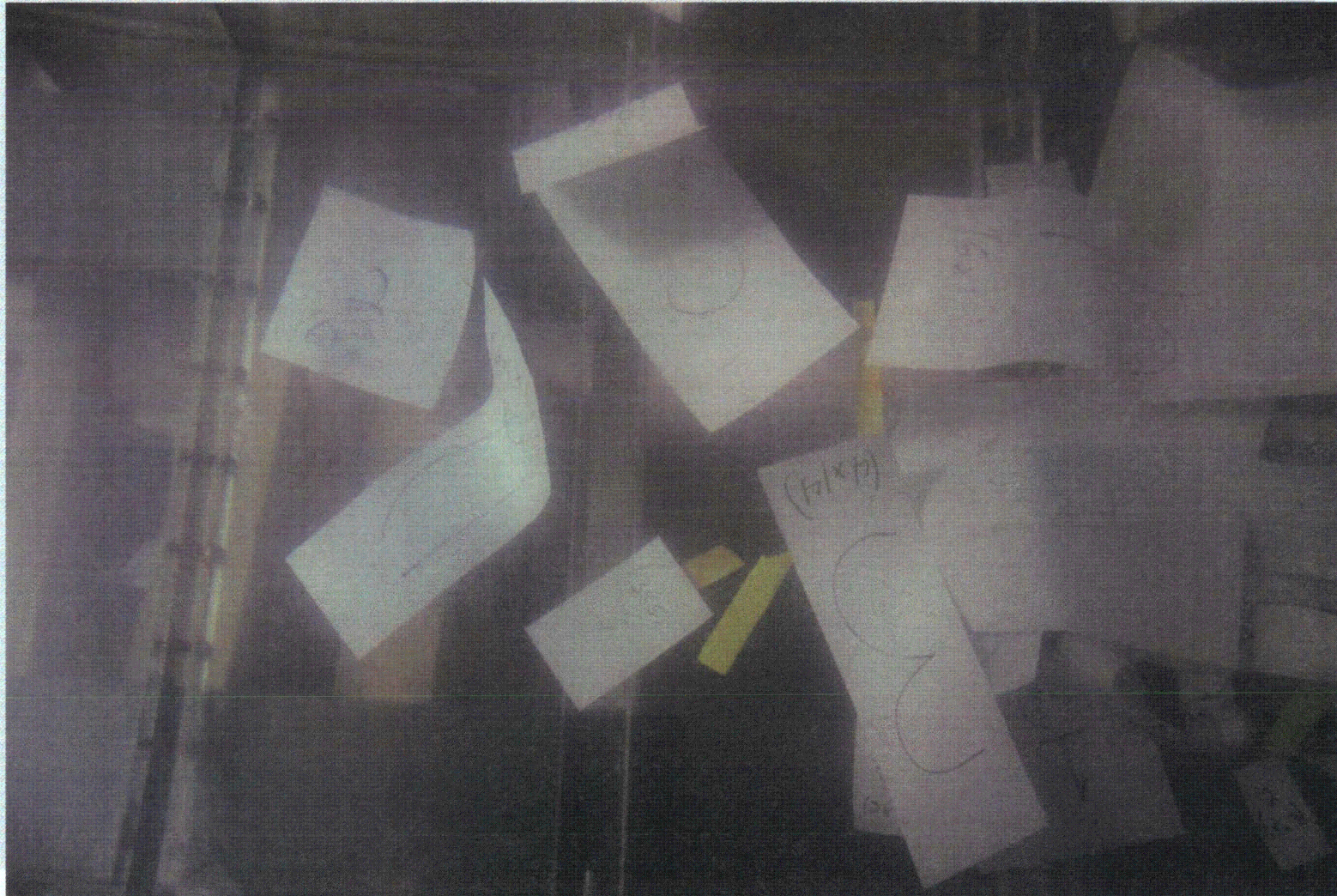
Test 6 Labels and Misc

Debris transport test – labels and tags within 3 feet of drop



Test 6 Labels and Misc

Debris transport test – labels and tags within 5 feet of drop



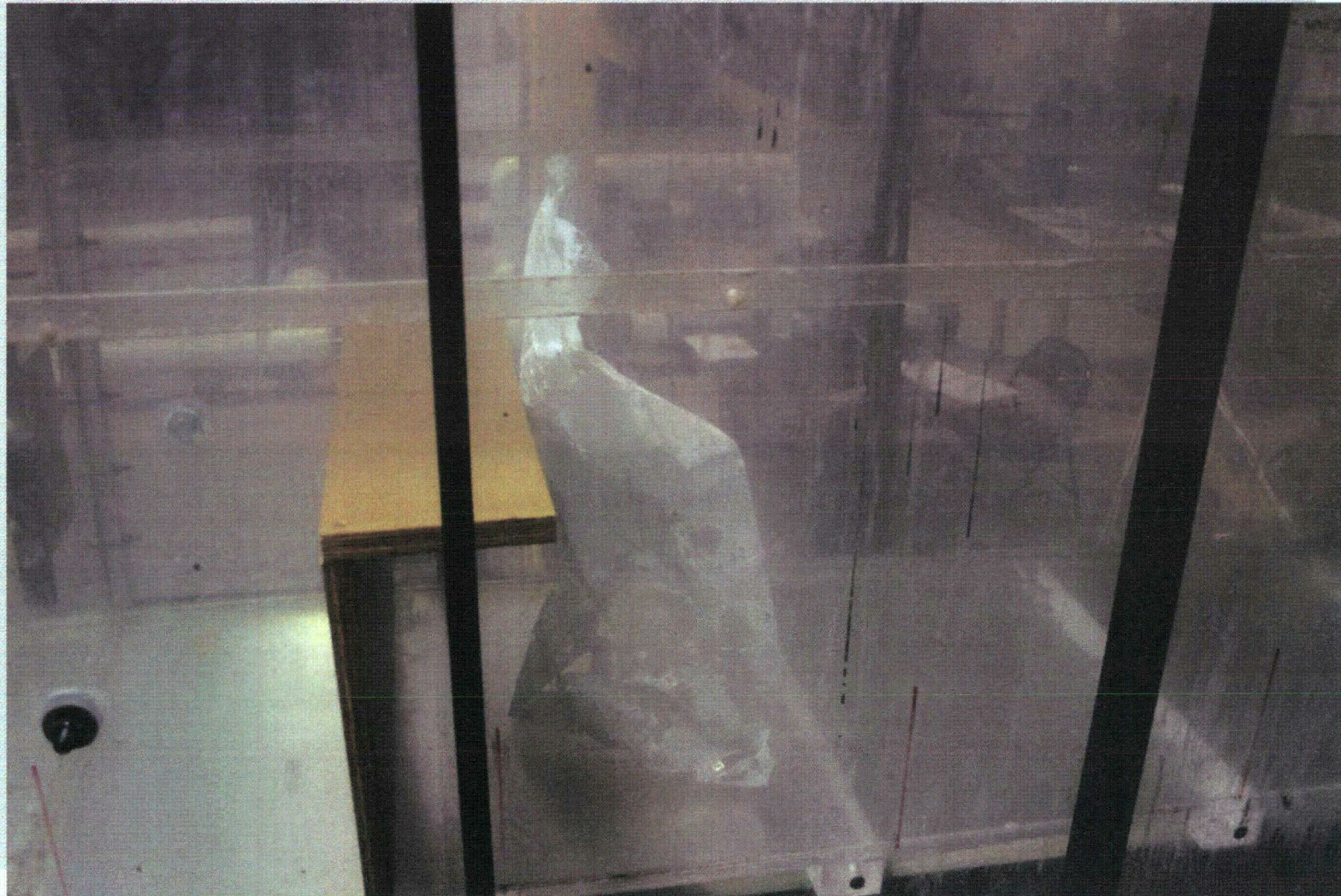
Test 6 Labels and Misc

Debris transport test – 17" x 22" labels



Test 6 Labels and Misc

Debris transport test – 17" x 22" labels



Test 6 Labels and Misc

Debris transport test – 17" x 22" labels



Test 6 Labels and Misc

Special Figures

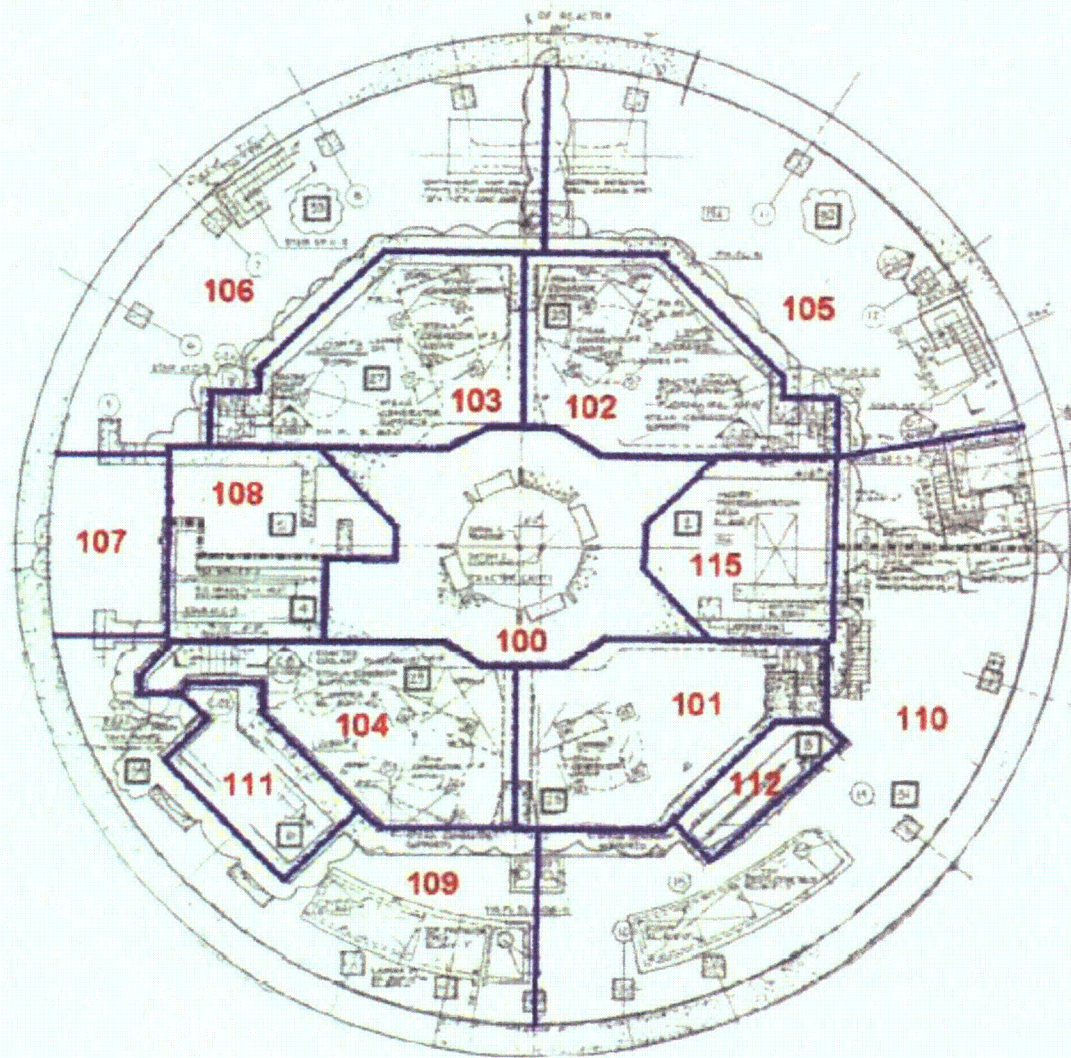


Figure 3.b-1 Zone Map El. 808'-0"

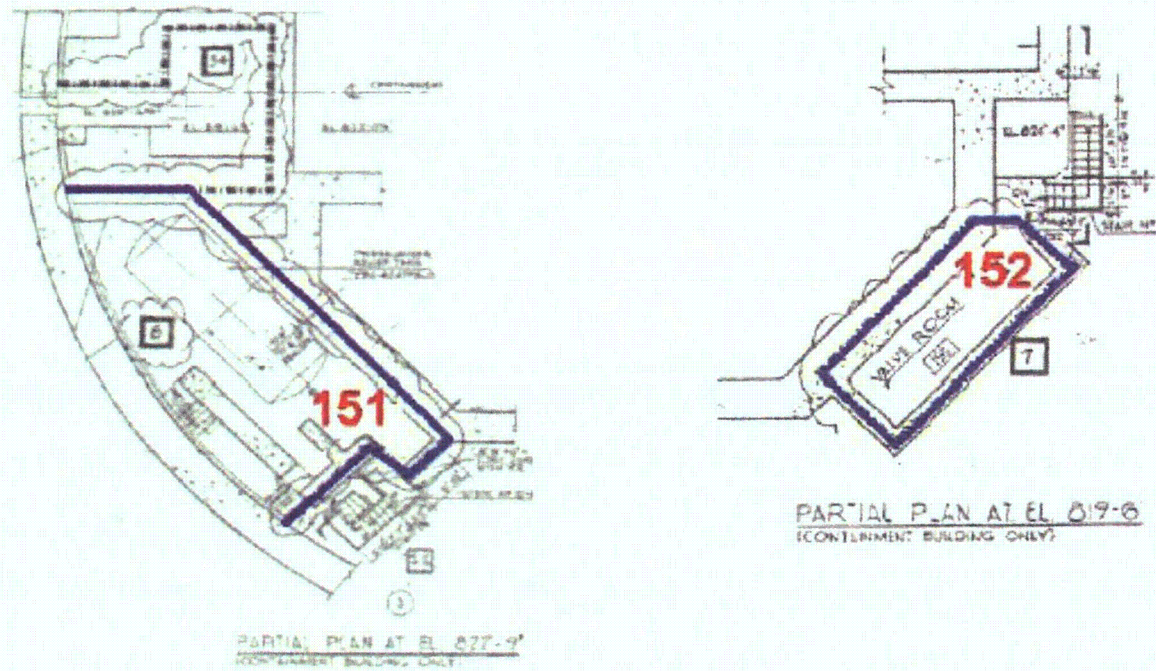


Figure 3.b-2 Zone Map El. 822'-9" & 819'-8"

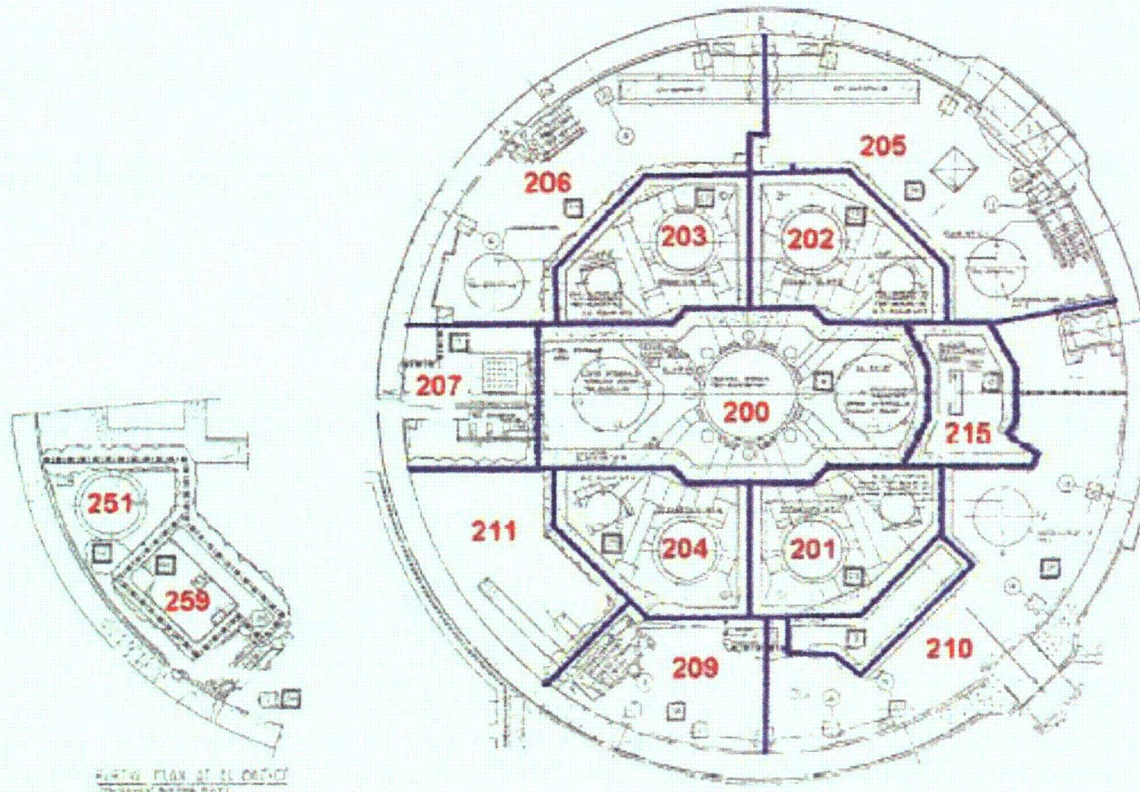


Figure 3.b-3 Zone Map El. 832'-6"

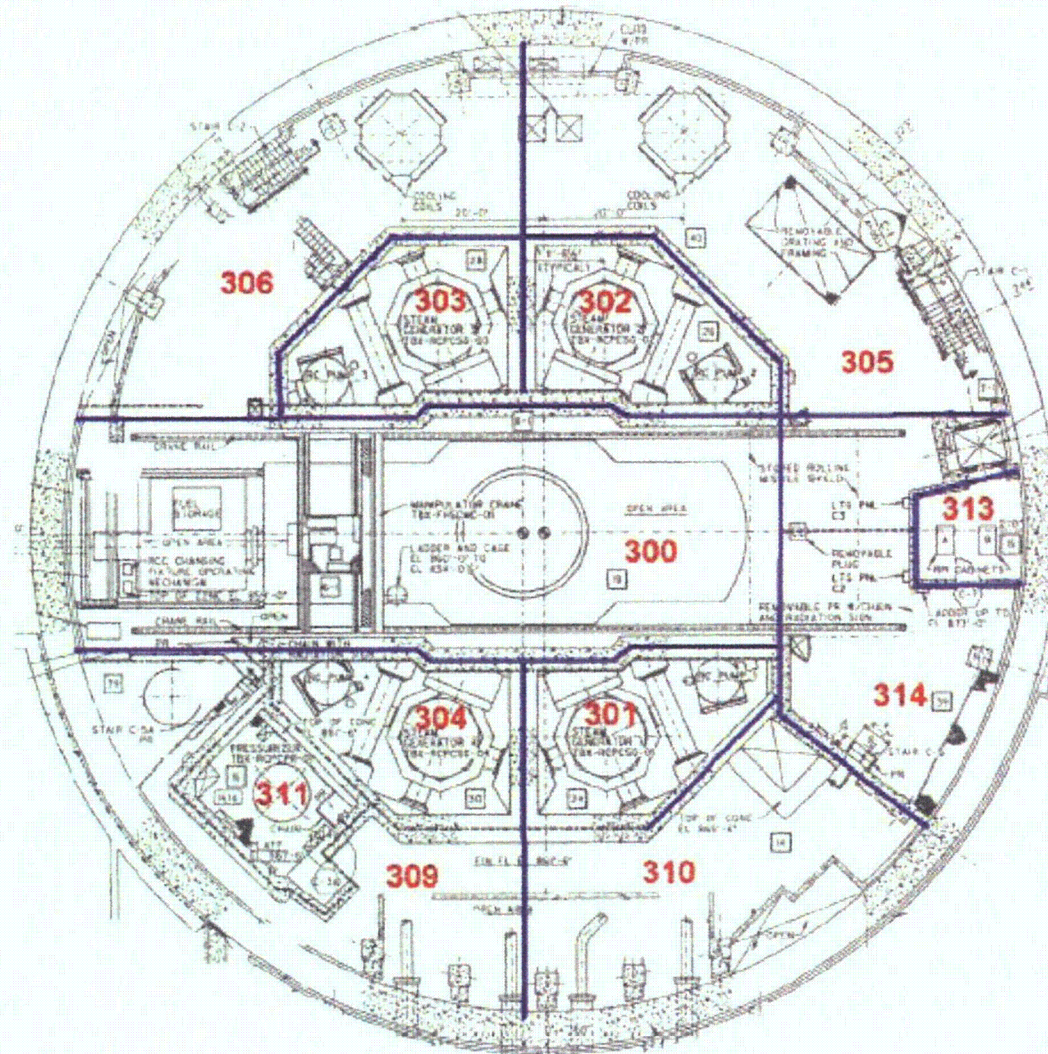


Figure 3.b-4 Zone Map El. 860'-0"

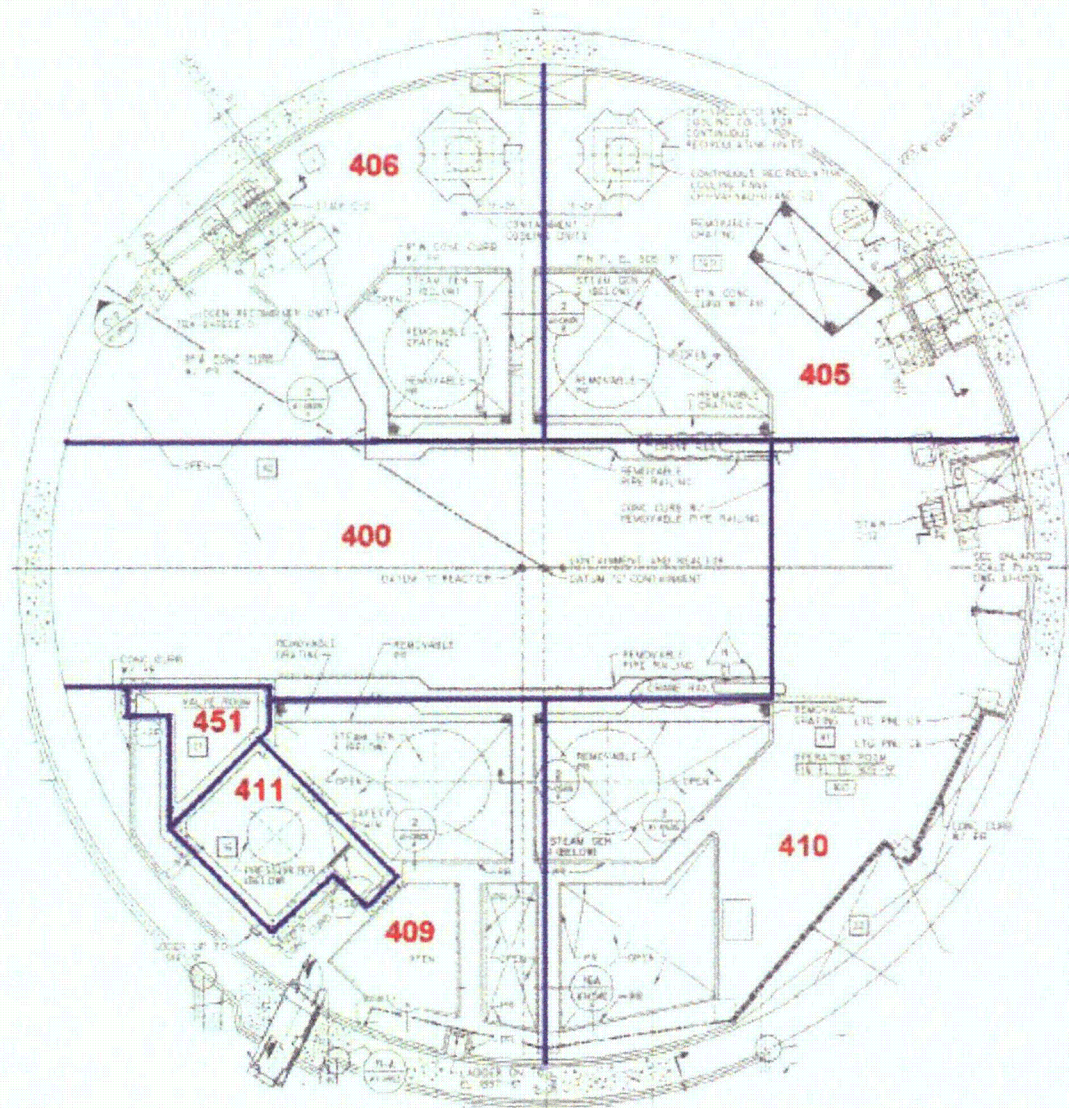


Figure 3.b-5 Zone Map El. 905'-9"

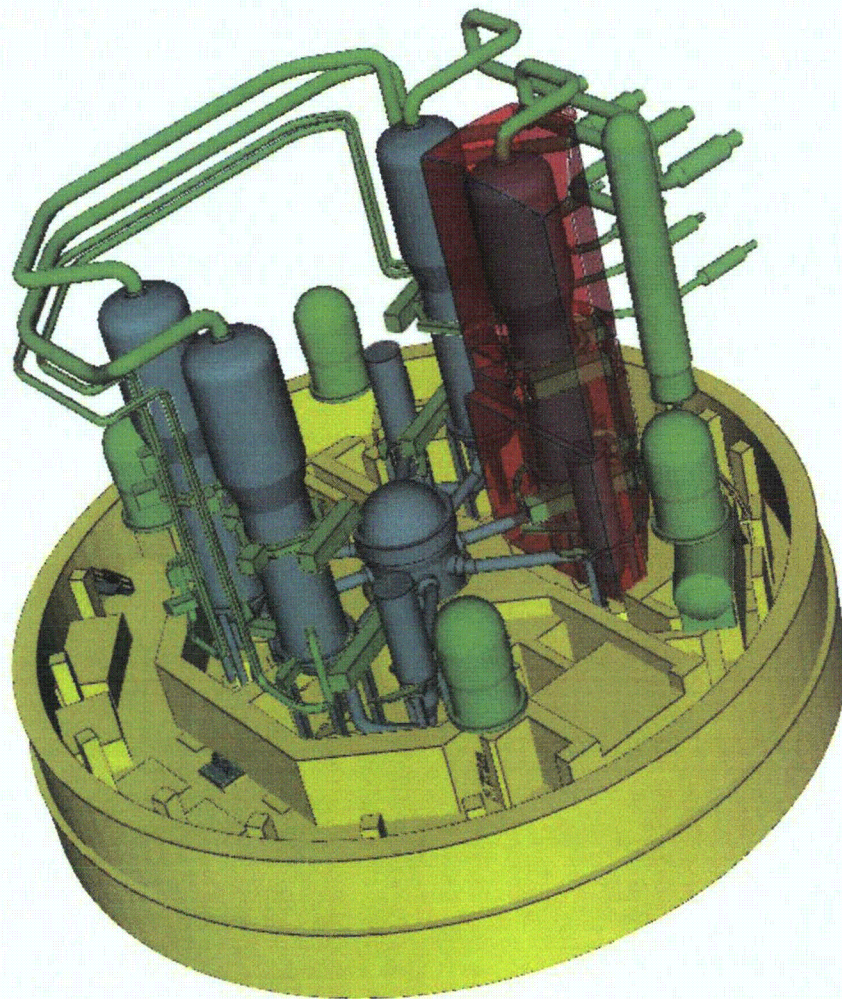


Figure 3.b-6 28.6D ZOI in Loop 4 Compartment

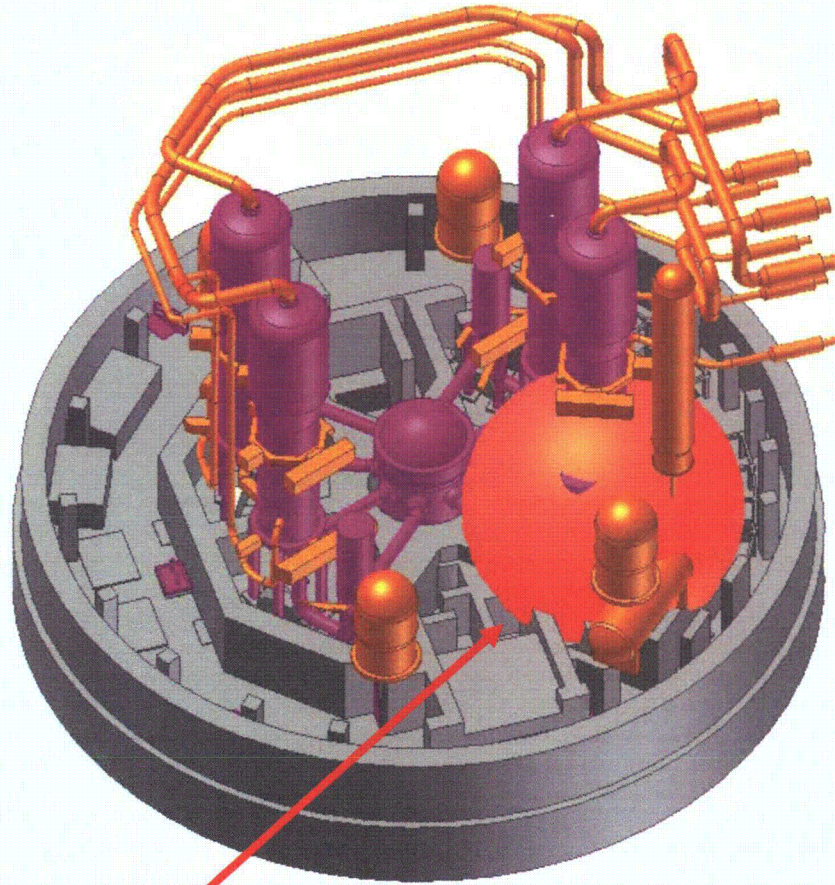


Figure 3.b-7a 10D ZOI on Loop 4 Cross-Over Leg (Structural Steel Only)

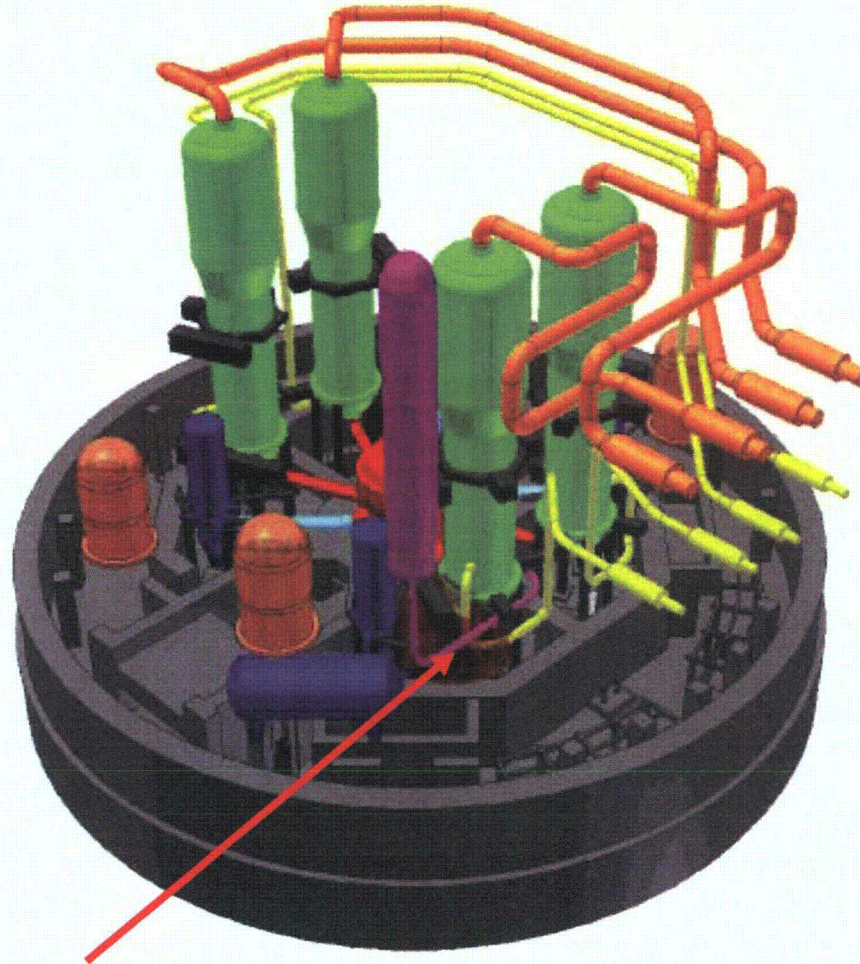


Figure 3.b-7b 4.0D ZOI on Loop 4 Cross-Over Leg (Concrete Only)

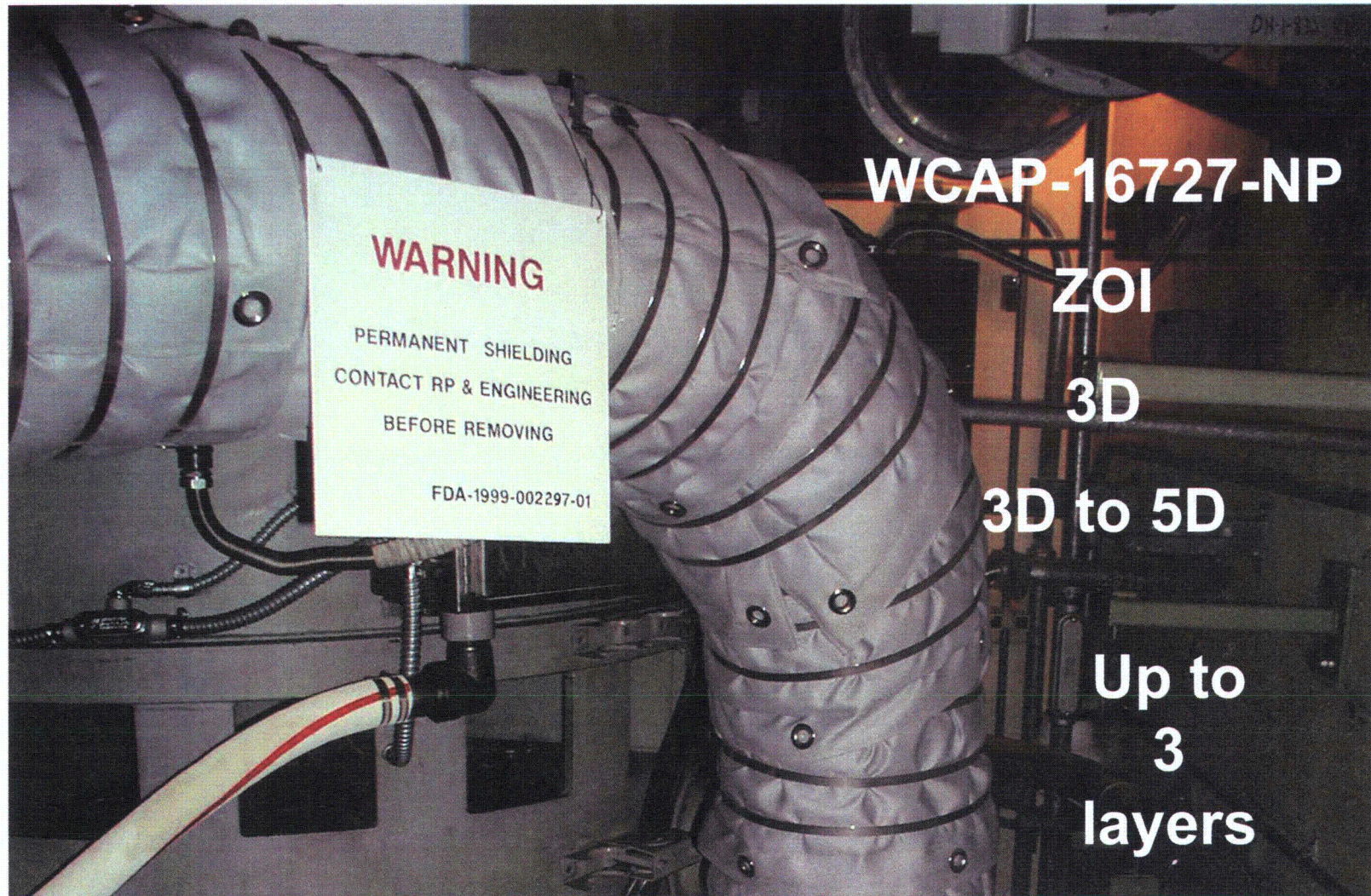


Figure 3.b-8 Lead Shielding Blankets

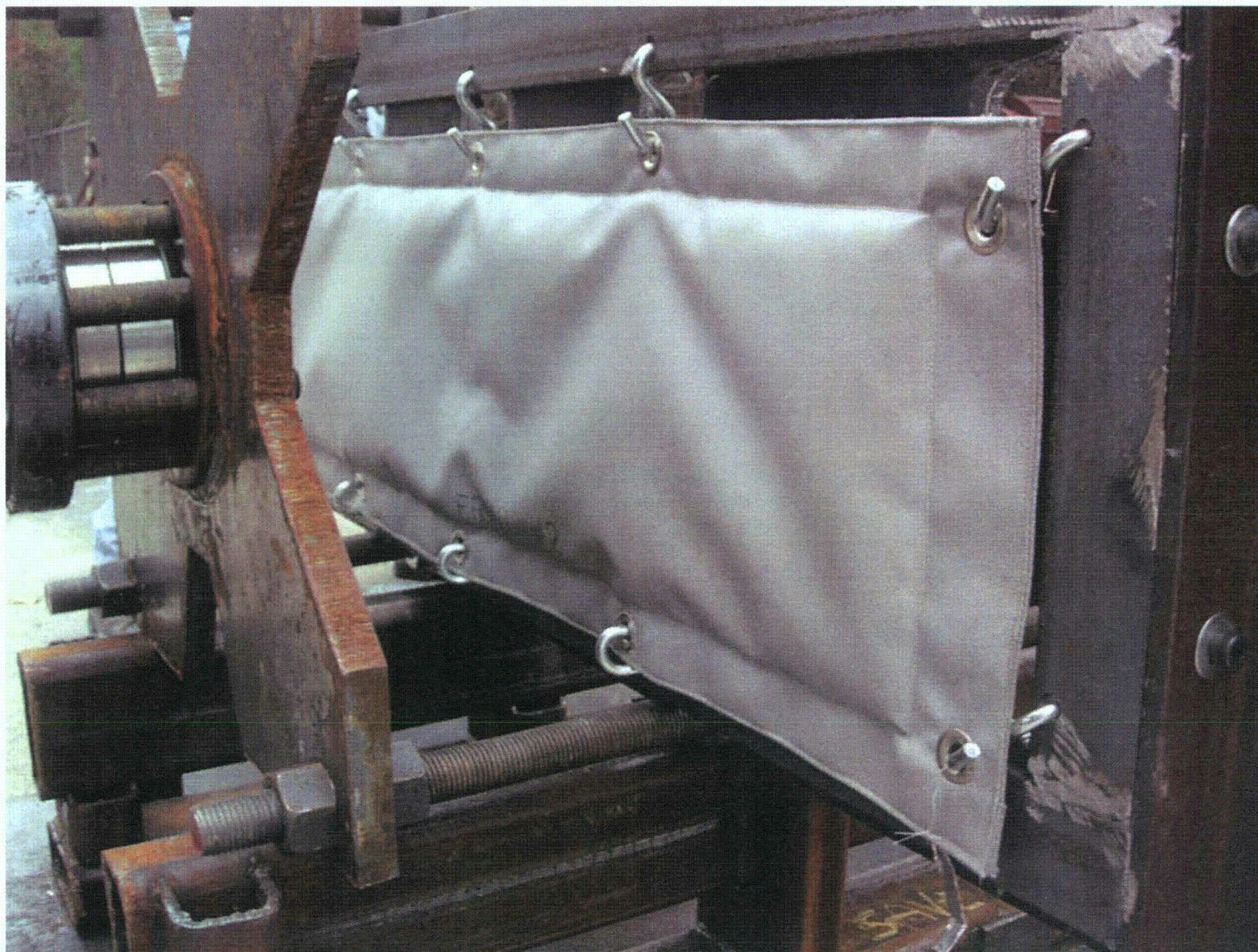


Figure 3.b-9 Wyle Test 2



Figure 3.b-10 Wyle Test 2

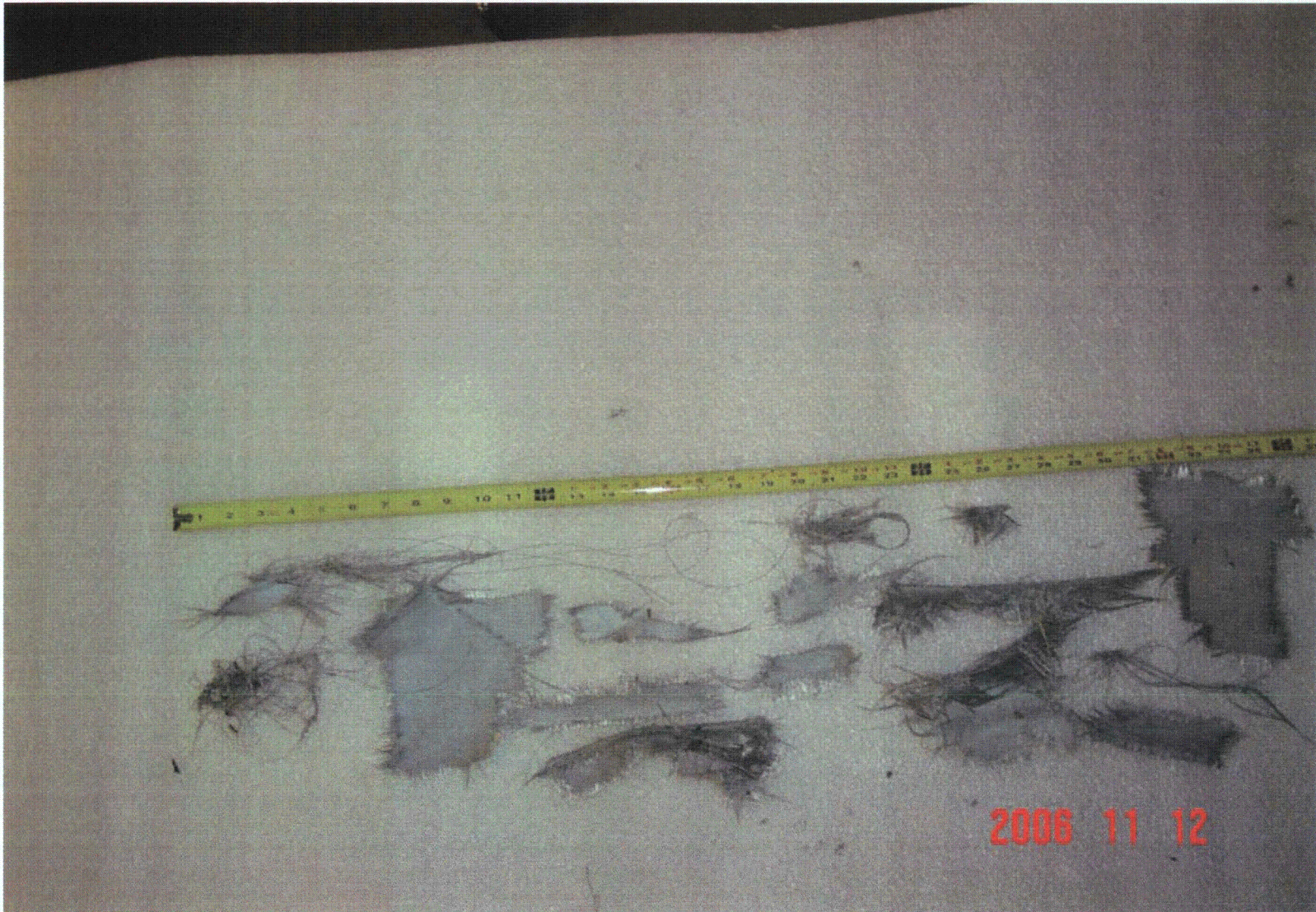


Figure 3.b-11 Wyle Test 2

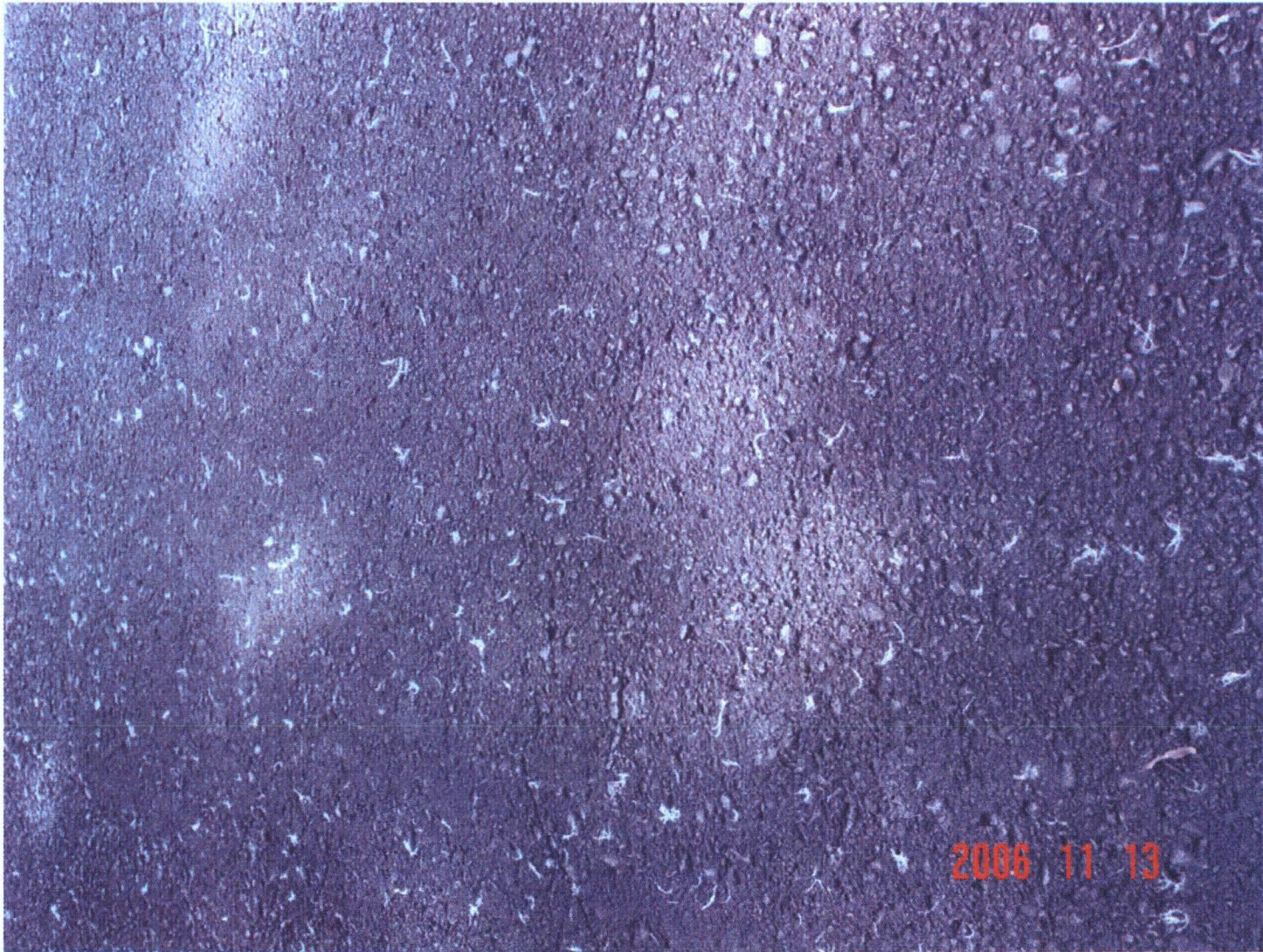


Figure 3.b-12 Wyle Test 2

Lead Blanket Cover Fines



Size consistent with LDFG smalls

Figure 3.b-13 Blanket debris prep for head loss testing

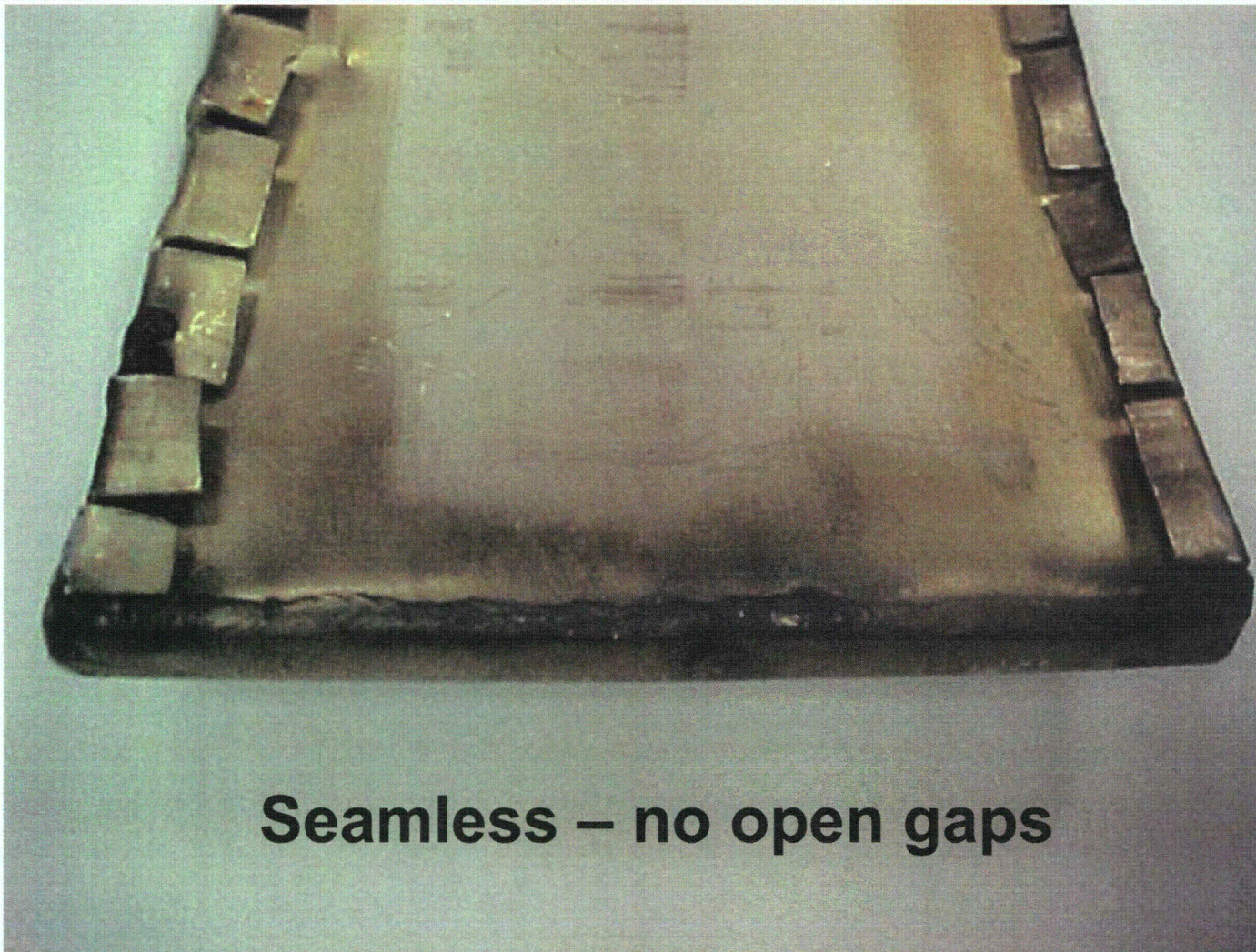


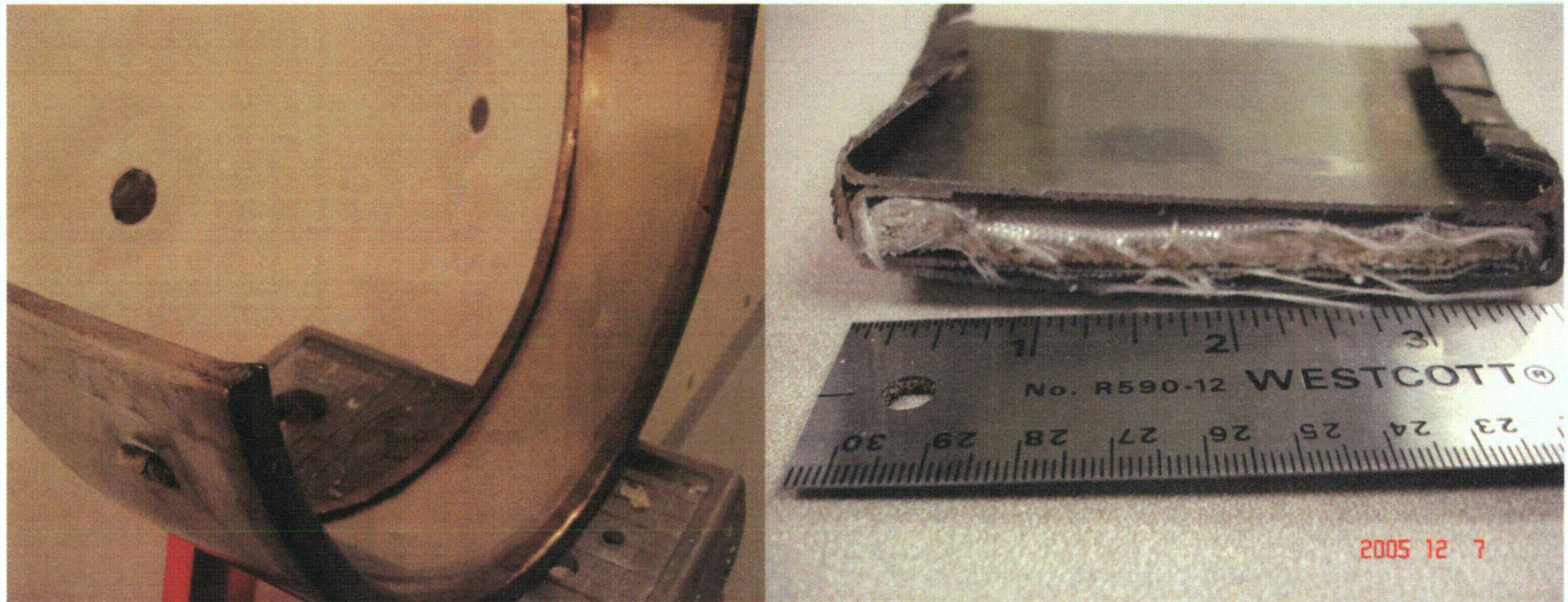
Figure 3.b-14 Min-K Cassette (solid ends, continuous welds)



Figure 3.b-15 Min-K Cassette (solid ends, continuous welds)

High Efficiency Insulation

Min-K encapsulation is 0.050 inch thick stainless steel



**Robust design -Weld are continuous. The end profile is low.
Maximum specified Min-K thickness 0.5 inches assumed.**

Figure 3.b-16 Min-K Cassette

Ø7-13-Ø6: Ø1
TXU “MIN-K” SAMPLE



Figure 3.c-1 Min-K Sample End View

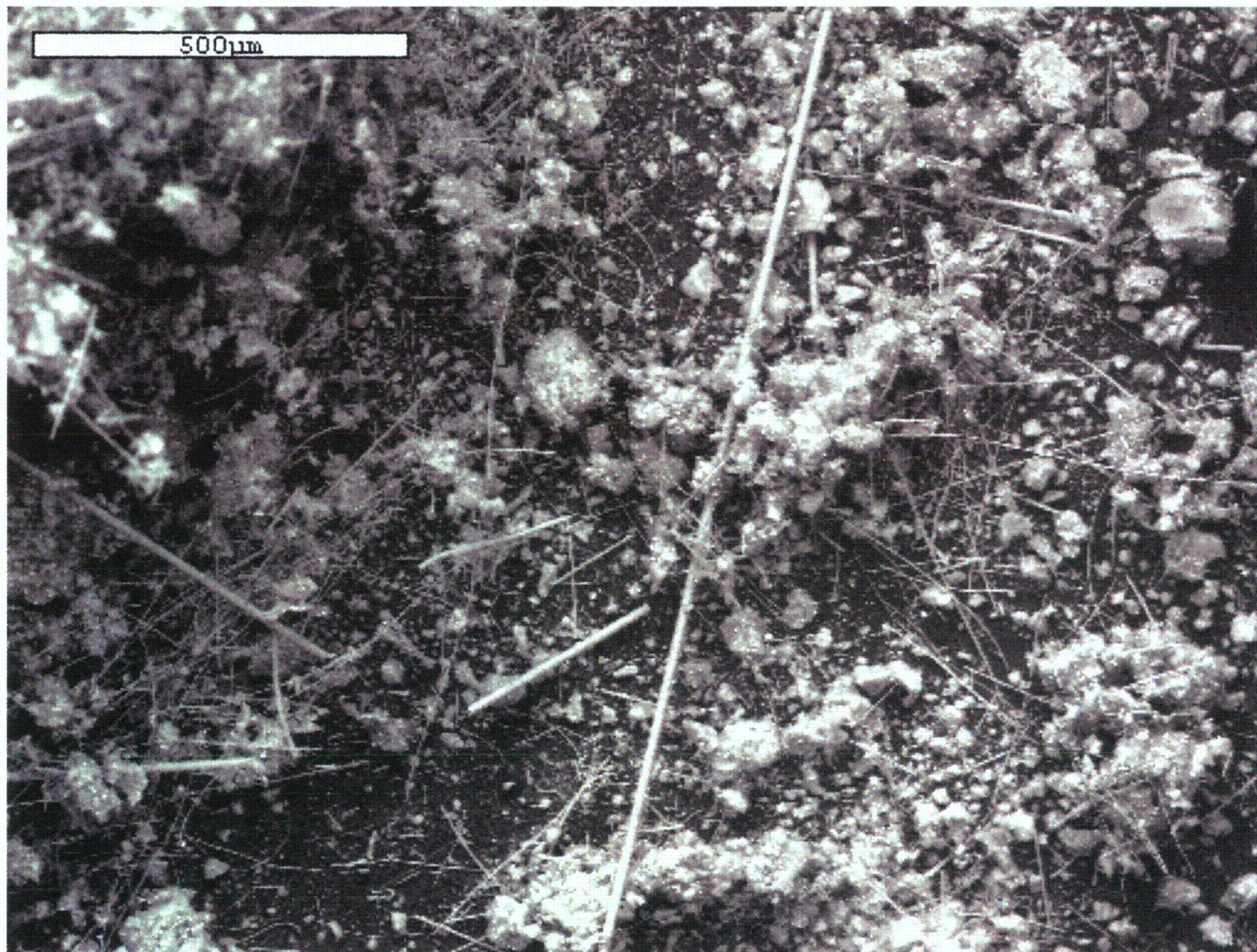


Figure 3.c-2 Min-K Sample at 80X

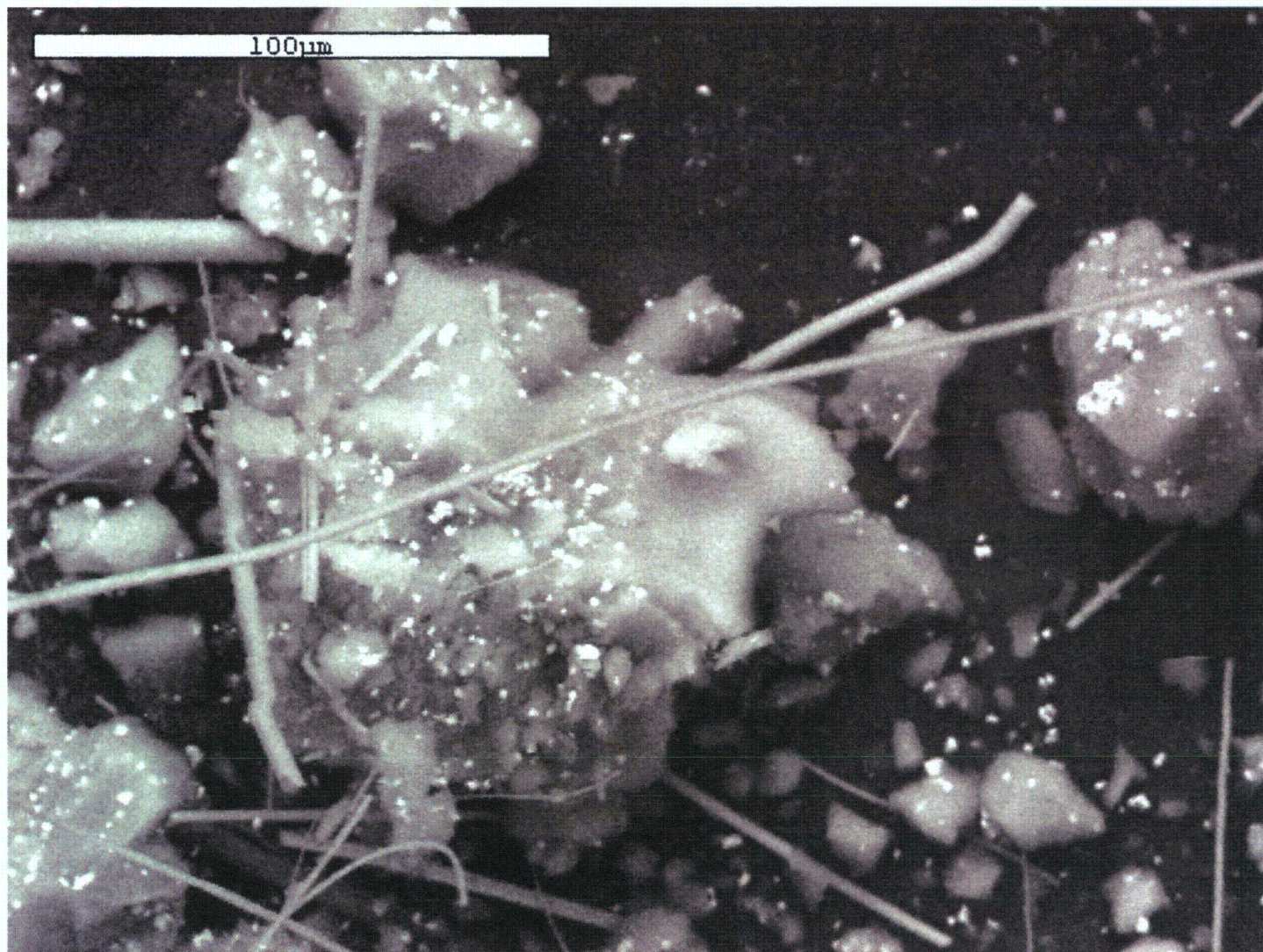


Figure 3.c-3 Min-K Sample at 2,500X

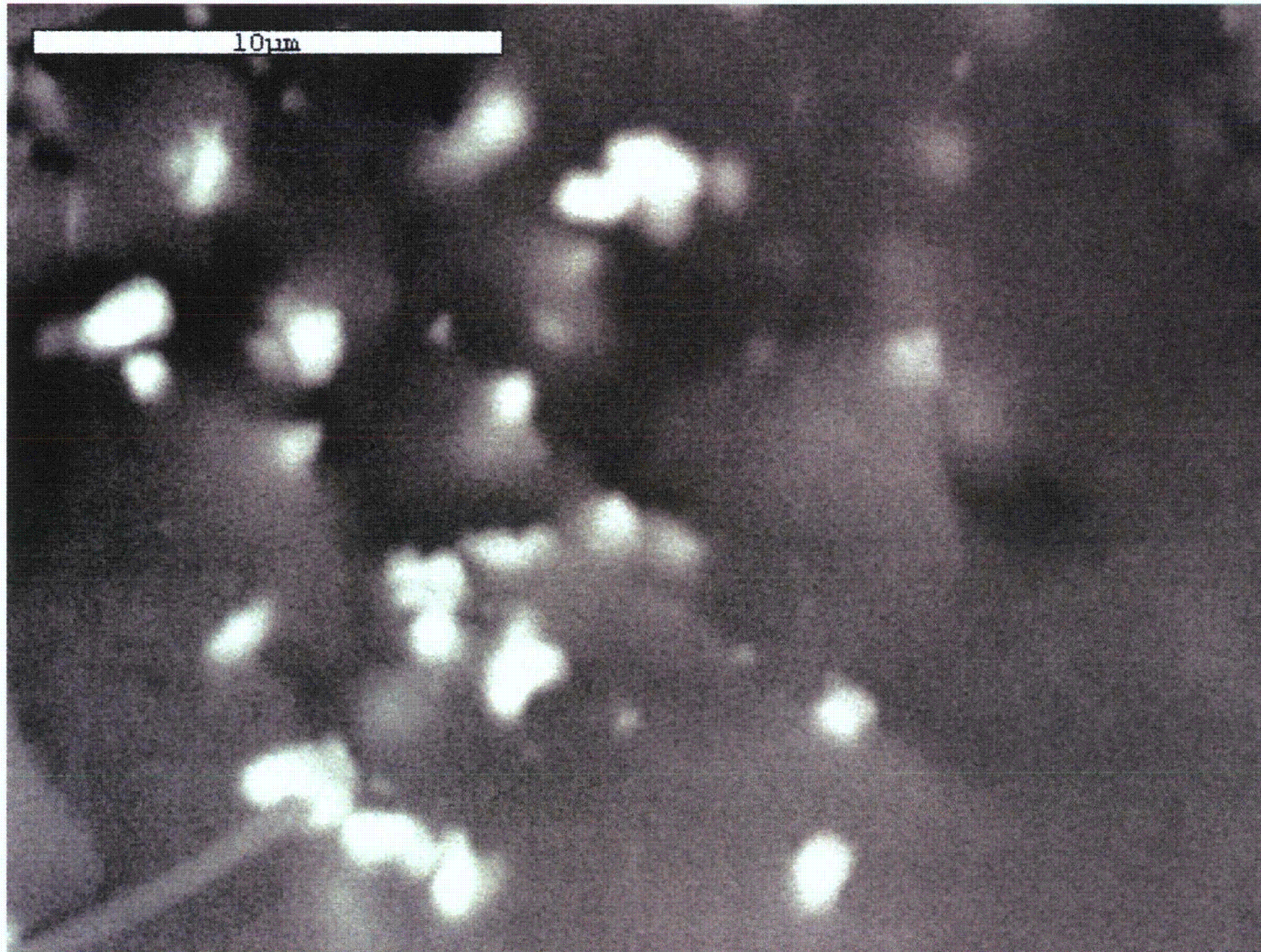


Figure 3.c-4 Min-K Sample at 5,000X Titanium Dioxide Particles