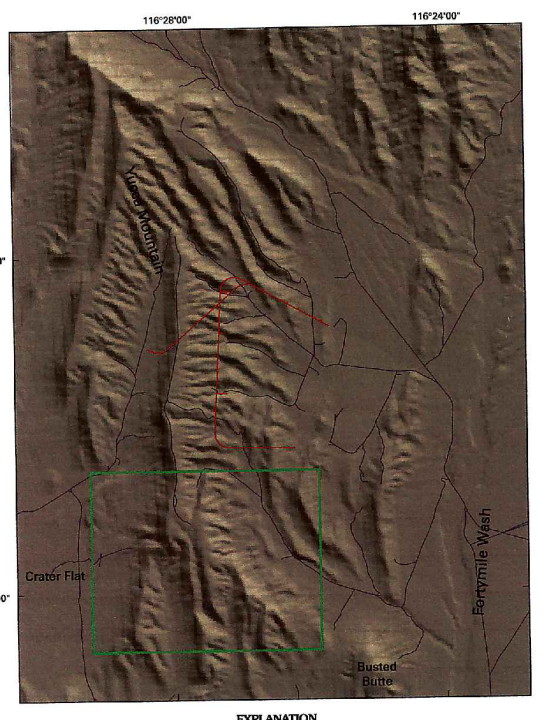
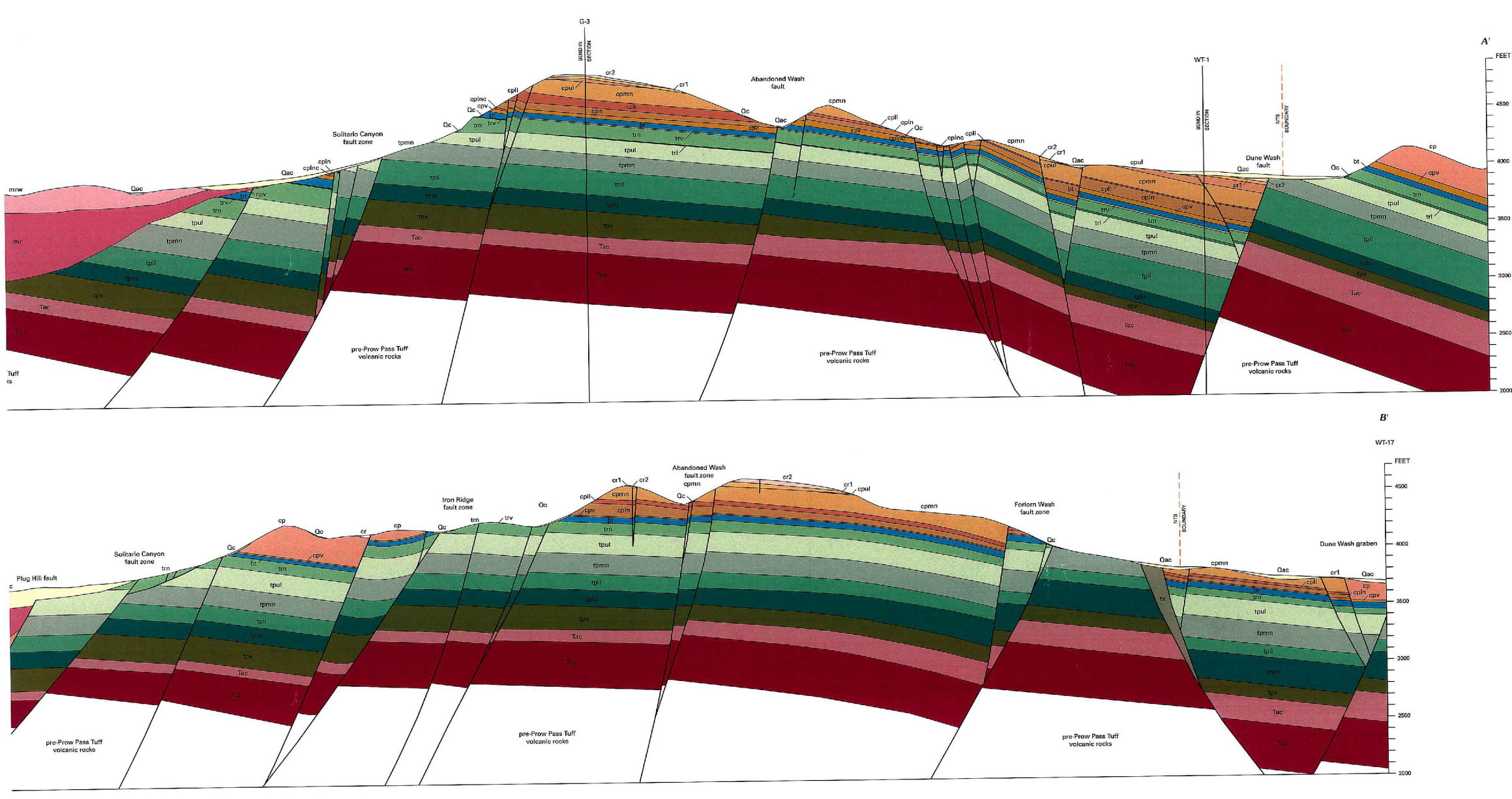


- LIST OF MAP UNITS**  
QUATERNARY SURFICIAL DE  
Alluvial and colluvial deposits (Holocene)  
Rock-fall, slope-failure, talus, and colluvial  
MIOCENE VOLCANIC ROCK
- Quaternary**
    - Qac Alluvial and colluvial deposits (Holocene)
    - Qcl Colluvial deposits (Holocene)
  - Miocene Volcanic Rocks**
    - mvw Timber Mountain Group
    - mvw Kilauea Mesa Tuff, undivided
    - mvw Kilauea Mesa Tuff, subdivided to partly v
    - ms Paintbrush Group, succeeded to partly v
    - ms Bedded tuff
    - px Paintbrush Group, undivided tectonic fac
    - px Thin Canyon Tuff
    - cr Crystal-rich member
    - cr Crystal-rich member, undivided
    - cr Vitric and subvitric resaction zone
    - cr Vitric zone
    - cr Plutonic-poor zone
    - cr Mixed granitic zone
    - cr Transition zone
    - cr Crystal-poor member
    - cr Crystal-poor member, undivided
    - cr Upper lithophysal zone
    - cr Middle lithophysal zone
    - cr Lower lithophysal zone
    - cr Lower scapolithysal zone
    - cr Collocyte ashzone
    - cr Vitric zone
    - cr Pre-Pine Pass tuff
    - cr Pine Pass tuff
    - cr Topograp Spring Tuff
    - cr Crystal-rich member
    - cr Undivided tectonic fault silvers and f
    - cr Vitric and densely welded zones and
    - cr Vitric zone and densely welded zone
    - cr Neolithophysal zone
    - cr Lithophysal zone
    - cr Crystal-poor member
    - cr Upper lithophysal zone
    - cr Middle lithophysal zone
    - cr Lower lithophysal zone—Shown in cr
    - cr Lower scapolithysal zone—Shown
    - cr Vitric zone—Shown in cross section v
    - cr Collocyte Hills Formation—Shown in cross sect
    - cr Crater Flat Group
    - cr Pine Pass Tuff—Shown in cross section v
- EXPLANATION**
- Contact—Solid where exposed, dashed when
  - Fault—Solid where exposed or highly correlated
  - Strike block
  - Reverse fault—Sawtooth on upthrown side
  - Slide block
  - Normal fault
  - Unimproved road
  - Boundary of new detailed geologic map
  - Well
  - Strike and dip of bedding
  - Strike and dip of compression foliation
  - Strike and dip of contact—Calculated from
  - Fences

Scale 1:60,000  
CONTOUR INTERVAL 10 FEET  
NATIONAL GEODESIC VERTICAL DATUM OF 1929

New detailed geologic mapping by R.P. Dickerson and R.M. Drake II, November 2001 to May 2002. Mapping consists of the detailed mapping boundary from Day, Dickerson, and others (1998). Digital cartography by R.M. Drake II, C.A. San Juan, and Alessandro J. Demerick. Edited by Alessandro J. Demerick. Manuscript approved for publication August 22, 2003.



**PRELIMINARY WORKING DRAFT**  
**GEOLOGIC MAP OF SOUTH-CENTRAL YUCCA MOUNTAIN, NYE COUNTY, NEVADA**  
By Robert P. Dickerson<sup>1</sup> and Ronald M. Drake II<sup>2</sup>  
2003

<sup>1</sup>S. M. Stoller Corp.  
<sup>2</sup>U.S. Geological Survey

Any use of electronic resources on this map is digital. For use by Dec 2006, 1:60,000. Author's use only.