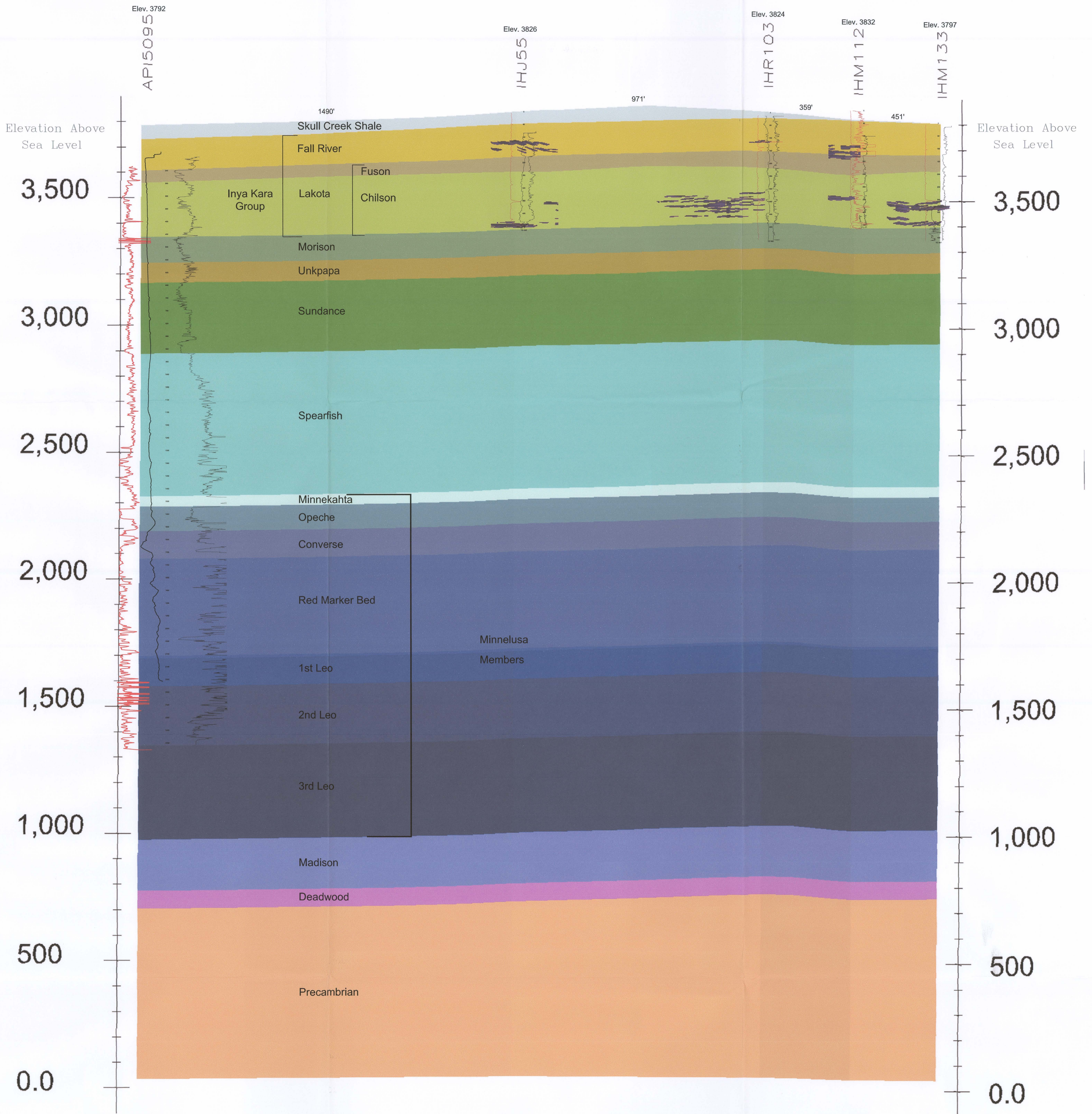


E
Northwest

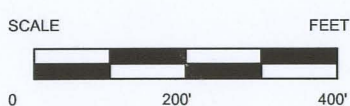
E'
Southeast

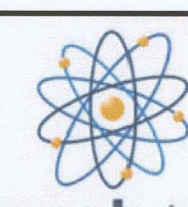


Z=1X

D63

Uranium Ore 0.02%
Grade Cutoff



CONSULTANT		REVISIONS				 POWERTECH (USA) INC. PLATE 3.3-5 Generalized Cross Section Fall River County
#	DRAWN	CHECKED	APPROVED	DATE		
						PROJECT Dewey-Burdock Project COORDS FILENAME c:\powertech\south dakota\dewey burdock\autocad\2008\sections 10-15-2008\e-e\1xsec e-e ore11\41-08.dwg
CHECK SCALES	PLOT DATE 11-Nov-2008		DATE	SCALE As Noted		
If this bar does not measure 1 inch this map is not at its original scale Arch D 24" x 36"		DRAWN RC CHECKED RC		APPROVED DATE		