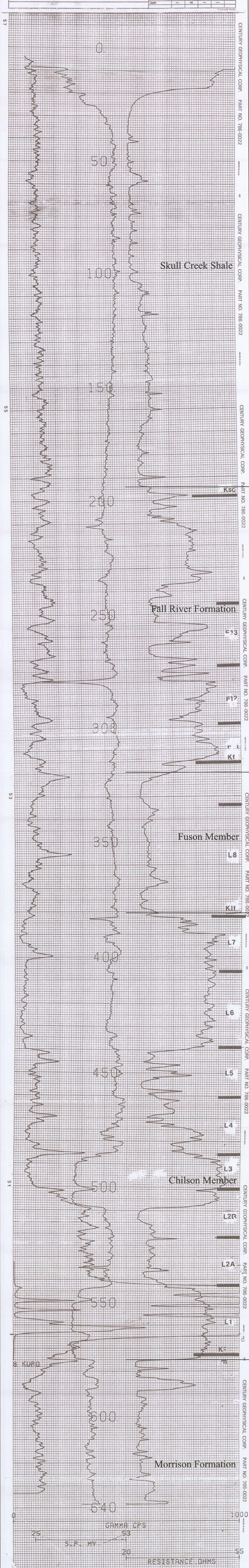


# PR-7

## 3655

<b>CENTURY GEOPHYSICAL CORPORATION</b> Tulsa, Oklahoma			BOREHOLE PR-7	DATE 05-19-82
COMPANY SILVER KING			OPERATOR 7736/M. RUSH	FIELD OFFICE CASPER
EQUIPMENT DATA				
BOREHOLE PR-7		PROBE MODEL 12" 12" 12" 12"		
AREA PETERSON		DETECTOR TYPE NA NA NA NA		
COUNTY FALL RIVER		ECG FACTOR 100 100 100 100		
SECTION 10		CALIBRATION --- --- --- ---		
TOWNSHIP 7S		CALIBRATION --- --- --- ---		
RANGE 1E		CALIBRATION --- --- --- ---		
HOLE DATA				
TOTAL DEPTH - DRILLER : 640 FT		BIT SIZE : 5 1/2 IN		
TOTAL DEPTH - LOGGER : 640 FT		CASING - TYPE & SIZE : ---		
TOTAL FOOTAGE LOGGED : 640 FT		CASING DEPTH : ---		
LOGGING SPEED : 60 FT/MIN		BOREHOLE FLUID : MUD		
REFERENCE LEVEL : GL		FLUID RESISTIVITY : 49.2 #A		
PROBE NO. : 7055-53		SOFTWARE LEVEL : ---		
SCALE SELECTION : ---		OPERATOR : ---		
REMARKS OPEN HOLE				



CENTURY GEOPHYSICAL CORP. PART NO. 786-0022

Lakota Formation

D59

PLATE 3.3-1

C:\PowerTech\powertech logo.tif

Dewey-Burdock  
Typical Log

Fall River and Custer Counties  
South Dakota

Date: 11-05-2008 Plate: 2.6.4  
File Name: PR-7.log