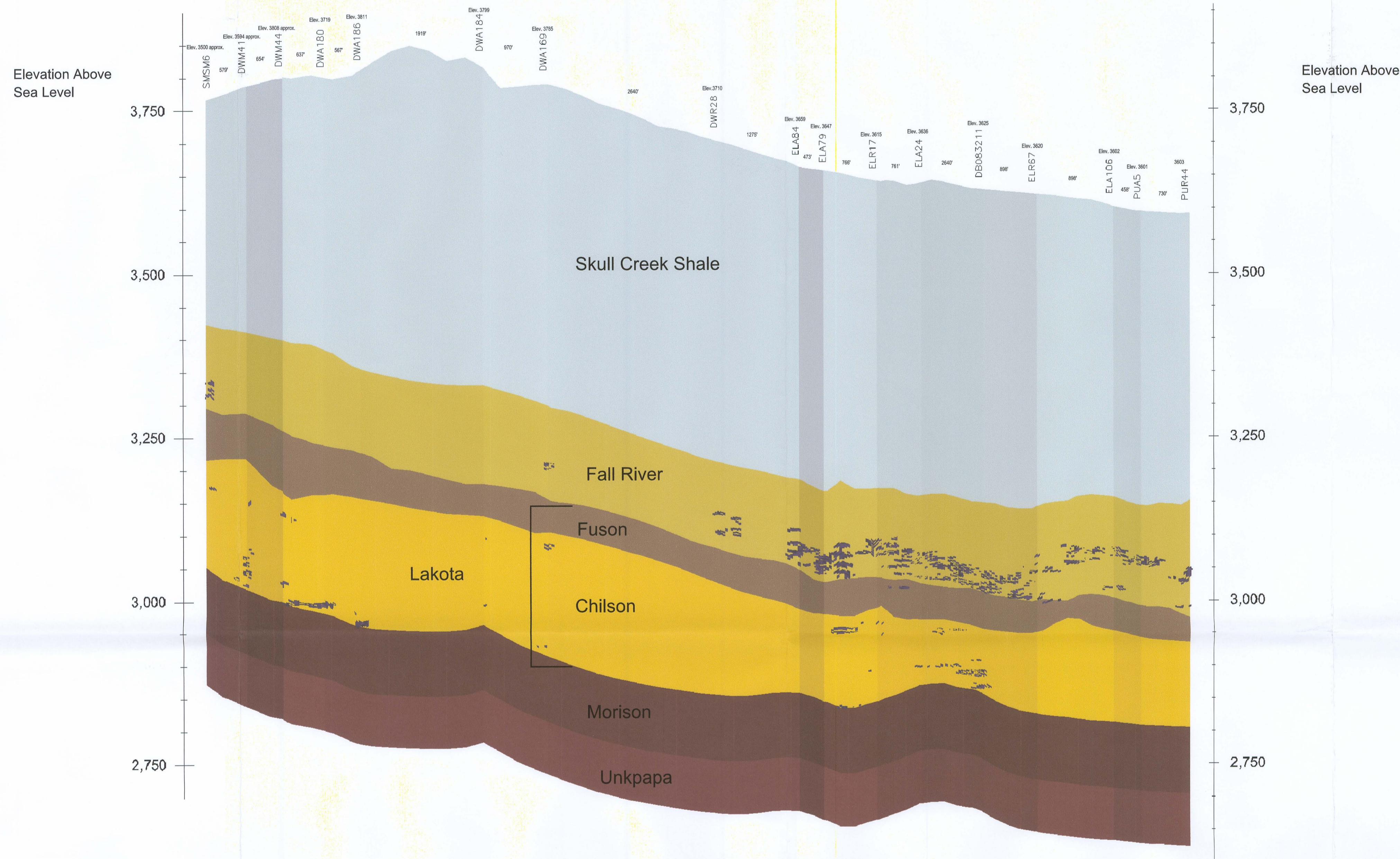


F  
NORTHEAST

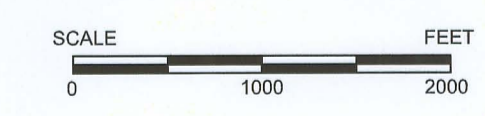
F'  
SOUTHWEST



vertical exaggration = 10X

D49

Uranium Ore 0.02% Grade Cutoff



CONSULTANT	REVISIONS			PROJECT Dewey-Burdock Project
	#	DRAWN	CHECKED APPROVED DATE	
CHECK SCALES	PLOT DATE 12-Nov-2008 DATE 10-Nov-2008			
	DRAWN RC		CHECKED	
ACR'D 24' x 30'	SCALE As Noted		FILENAME c:\powertech\south dakota\dewey burdock\autocad\2008\sections 10-15-2008\F-F section F-F' ore 11-12-08.dwg	

**POWERTECH (USA) INC.**  
**PLATE 2.6-12**  
**Ore Cross Section F-F'**  
**Fall River County**