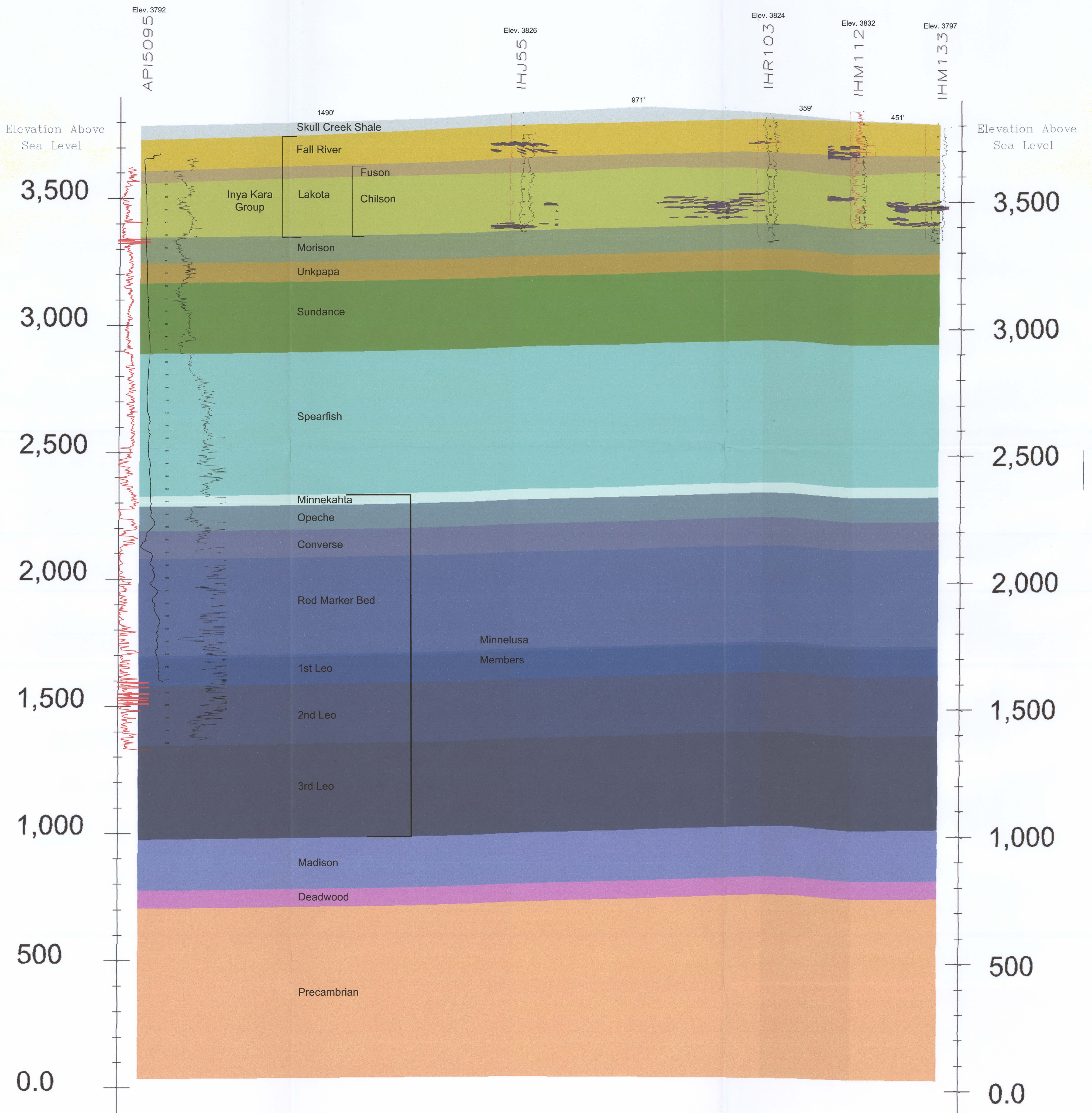


E
Northwest

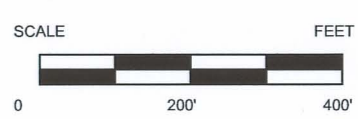
E'
Southeast

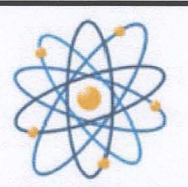


Z=1X

D42

Uranium Ore 0.02%
Grade Cutoff



CONSULTANT	REVISIONS				 POWERTECH (USA) INC. Plate 2.6-5 Generalized Cross Section Fall River County
	#	DRAWN	CHECKED	APPROVED	
REF					
CHECK SCALES		PLOT DATE		DATE	
If this bar does not measure 1 inch this map is not at its original scale.		11-Nov-2008		11-Nov-2008	
SCALE		DRAWN		CHECKED	
As Noted		RC		RC	
Arch D 24"x36"		SCALE		FILENAME	
		As Noted		c:\powertech\south dakota\dewey burdock\autocad\2008\sections 10-15-2008\le-e'xsec e-e' ore1141-08.dwg	
PROJECT			COORDS		
Dewey-Burdock Project					