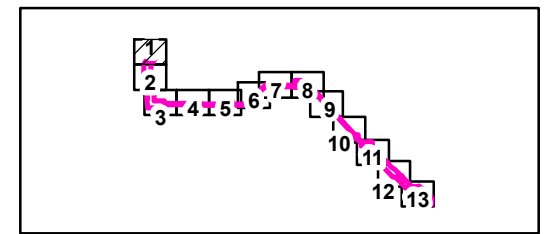
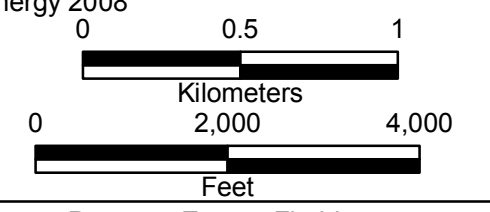


LEGEND

- Substations
- Interstate
- US road
- State road
- Toll road
- County road
- Railroad
- Corridor boundary
- Proposed substation areas
- County boundary



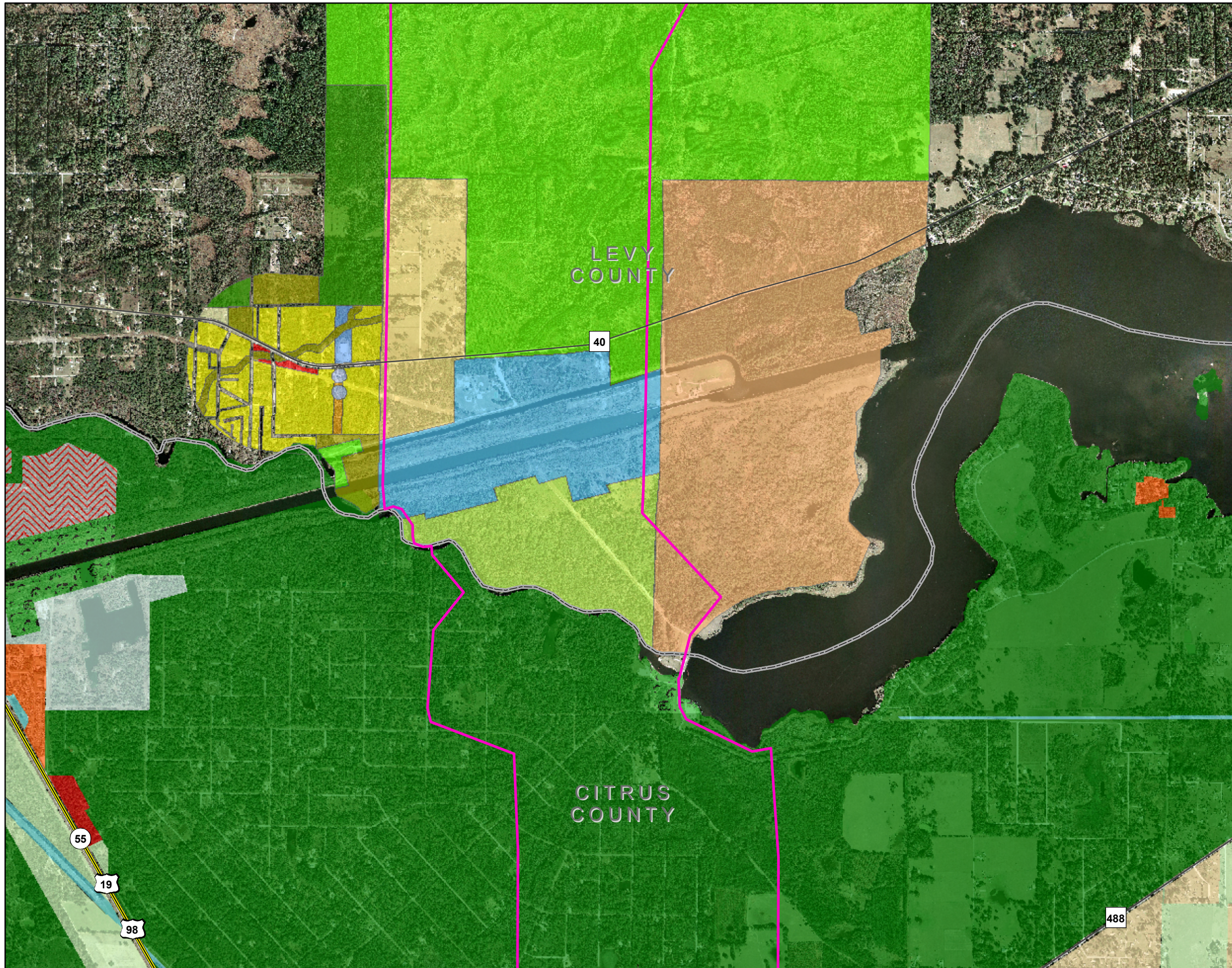
- Note**
1. See Figure 2.2.2-20 for Future Land Use legend
- Sources**
1. County boundaries - US Census Bureau
 2. Major roads - Florida Department of Transportation April 2006
 3. Railroads - Florida Department of Environmental Protection 1999
 4. Future Land use - Current data from County and municipality planning departments 2007 and 2008
 5. Aerial photography - Aerials Express January 2007
 6. Proposed Levy Nuclear Plant - Progress Energy 2008
 7. Corridor and proposed substation locations - Golder Associates and Progress Energy 2008



Progress Energy Florida

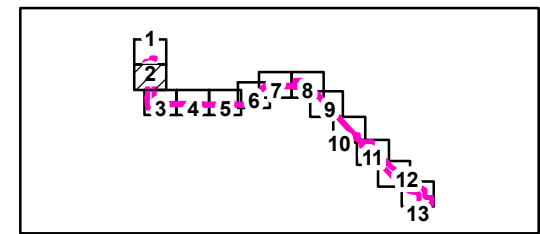
**Levy Nuclear Plant
Units 1 and 2
Part 3, Environmental Report**

Future Land Use
LNP to Proposed Central Florida South Substation
FIGURE 2.2-25
1 OF 13 Rev 0

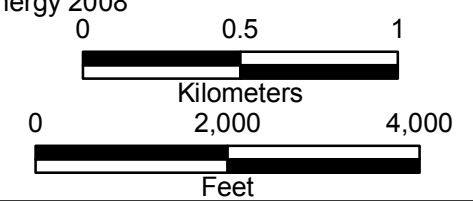


LEGEND

- Substations
- Interstate
- US road
- State road
- Toll road
- County road
- Railroad
- Corridor boundary
- Proposed substation areas
- County boundary



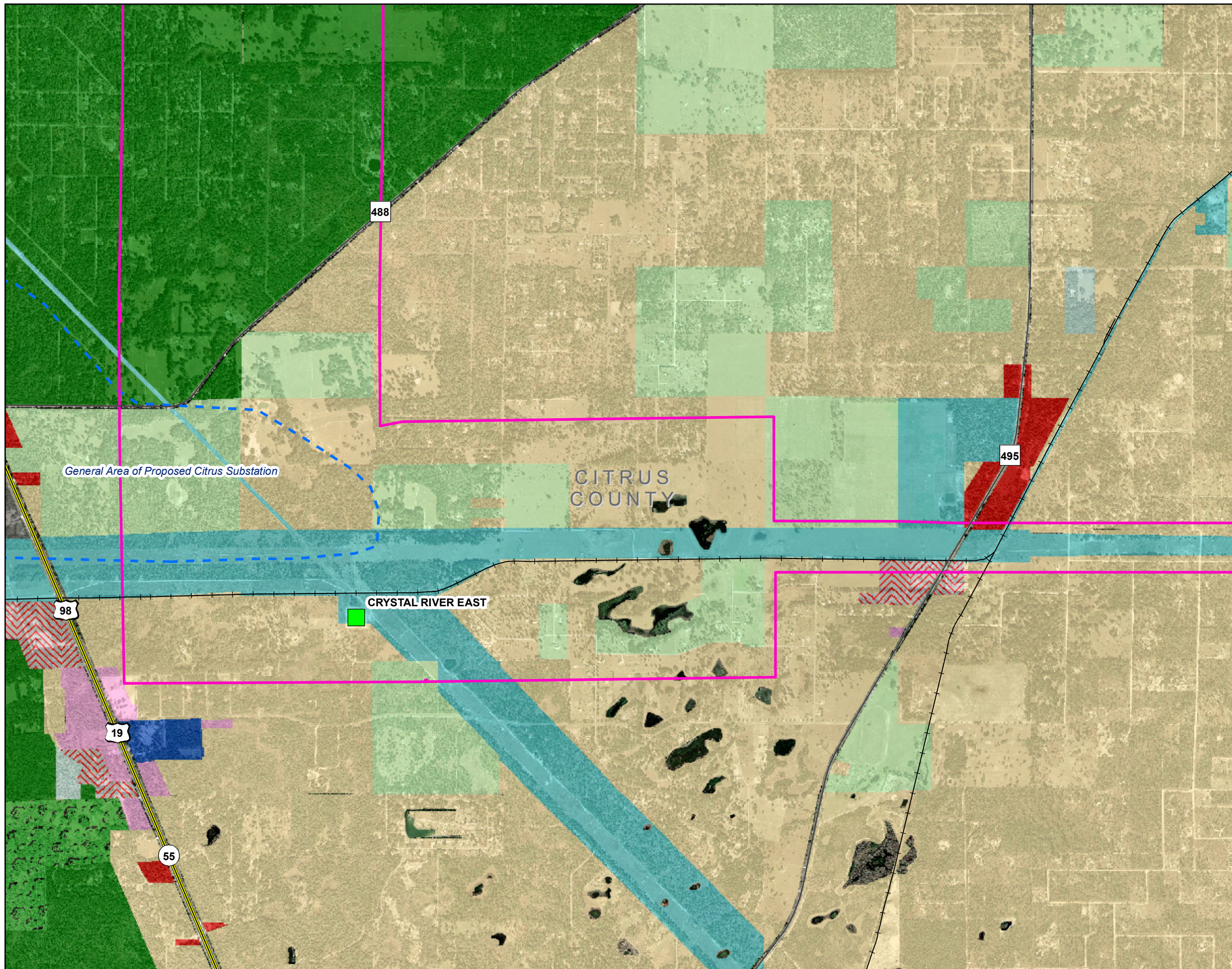
- Note**
1. See Figure 2.2.2-20 for Future Land Use legend
- Sources**
1. County boundaries - US Census Bureau
 2. Major roads - Florida Department of Transportation April 2006
 3. Railroads - Florida Department of Environmental Protection 1999
 4. Future Land use - Current data from County and municipality planning departments 2007 and 2008
 5. Aerial photography - Aerials Express January 2007
 6. Proposed Levy Nuclear Plant - Progress Energy 2008
 7. Corridor and proposed substation locations - Golder Associates and Progress Energy 2008



Progress Energy Florida

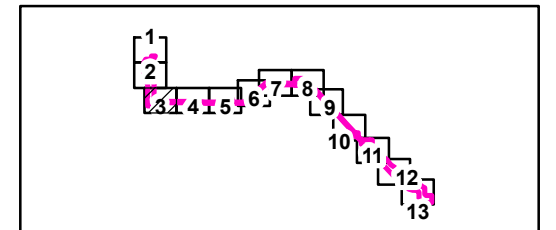
**Levy Nuclear Plant
Units 1 and 2
Part 3, Environmental Report**

Future Land Use
LNP to Proposed Central Florida South Substation
FIGURE 2.2-25
2 OF 13 Rev 0



LEGEND

- Substations
- Interstate
- US road
- State road
- Toll road
- County road
- Railroad
- Corridor boundary
- Proposed substation areas
- County boundary

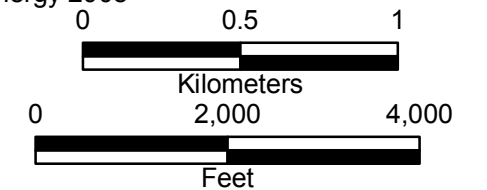


Note

1. See Figure 2.2.2-20 for Future Land Use legend

Sources

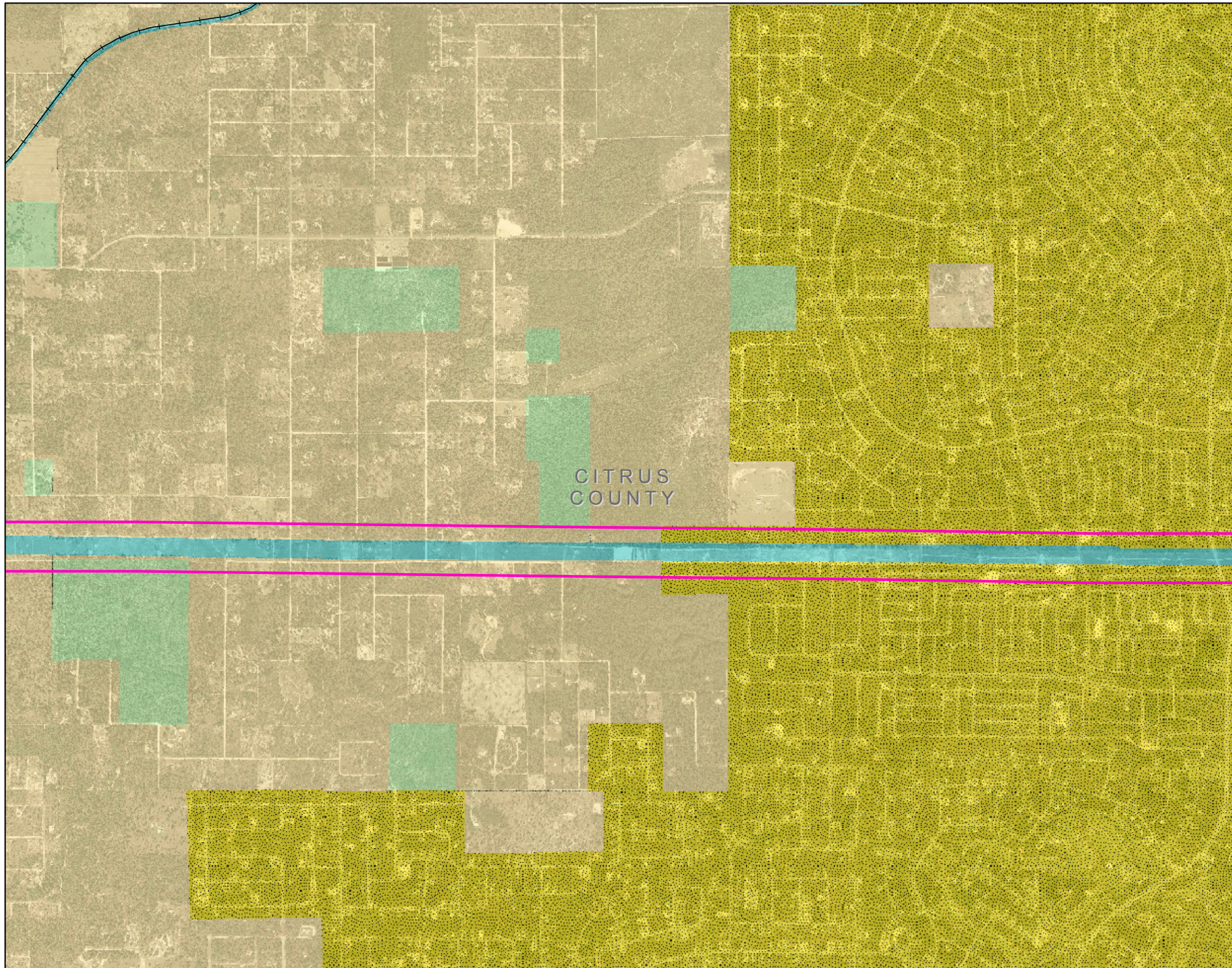
1. County boundaries - US Census Bureau
2. Major roads - Florida Department of Transportation April 2006
3. Railroads - Florida Department of Environmental Protection 1999
4. Future Land use - Current data from County and municipality planning departments 2007 and 2008
5. Aerial photography - Aerials Express January 2007
6. Proposed Levy Nuclear Plant - Progress Energy 2008
7. Corridor and proposed substation locations - Golder Associates and Progress Energy 2008



Progress Energy Florida

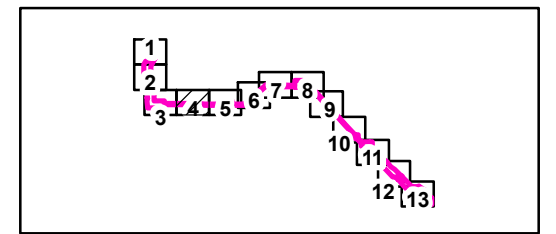
**Levy Nuclear Plant
Units 1 and 2
Part 3, Environmental Report**

Future Land Use
LNP to Proposed Central Florida South Substation
FIGURE 2.2-25



LEGEND

- Substations
- Interstate
- US road
- State road
- Toll road
- County road
- Railroad
- Corridor boundary
- Proposed substation areas
- County boundary

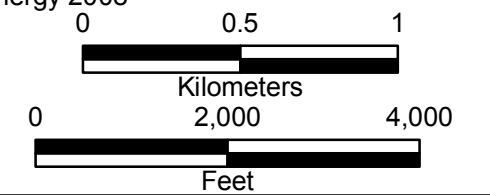


Note

1. See Figure 2.2.2-20 for Future Land Use legend

Sources

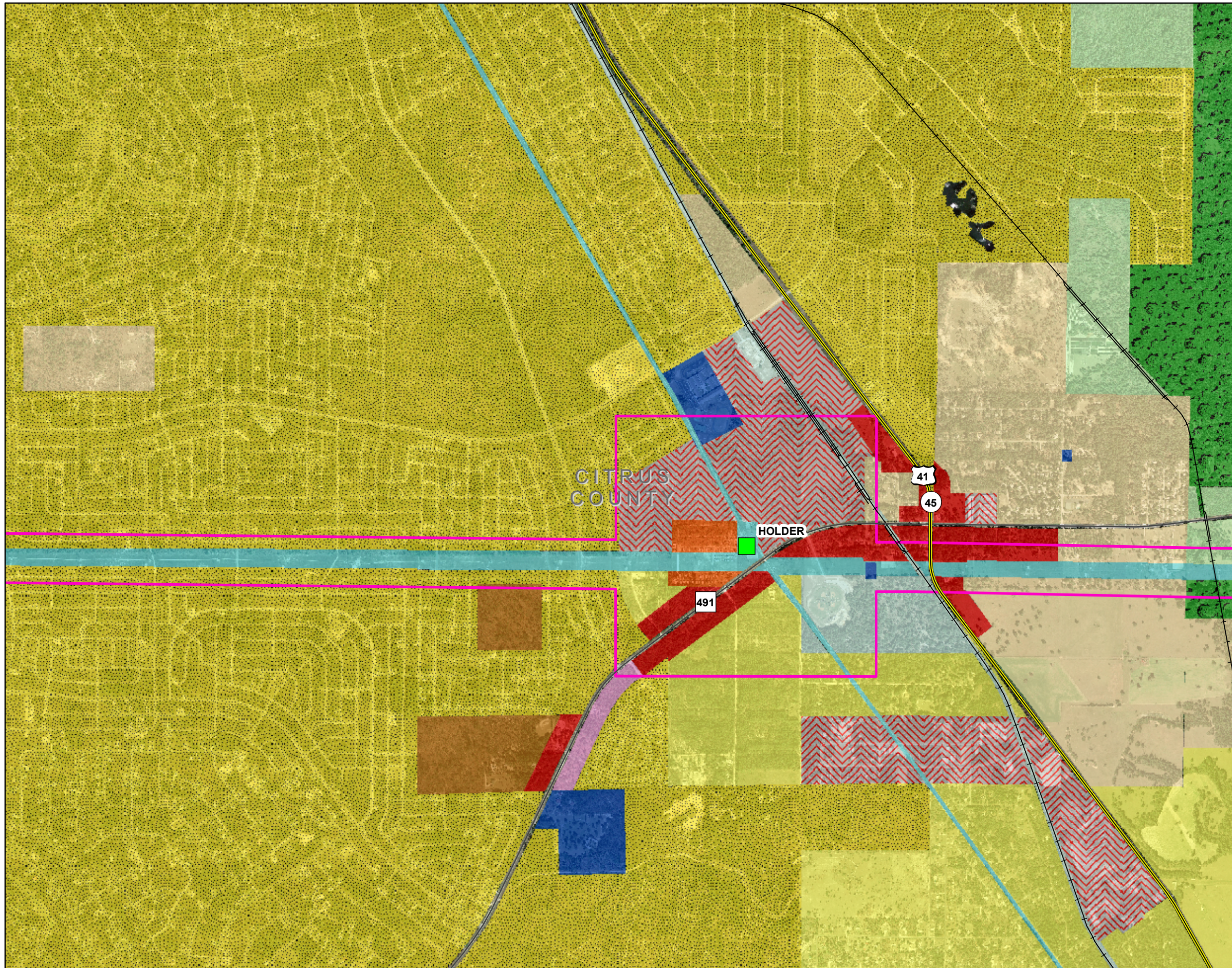
1. County boundaries - US Census Bureau
2. Major roads - Florida Department of Transportation April 2006
3. Railroads - Florida Department of Environmental Protection 1999
4. Future Land use - Current data from County and municipality planning departments 2007 and 2008
5. Aerial photography - Aerials Express January 2007
6. Proposed Levy Nuclear Plant - Progress Energy 2008
7. Corridor and proposed substation locations - Golder Associates and Progress Energy 2008



Progress Energy Florida

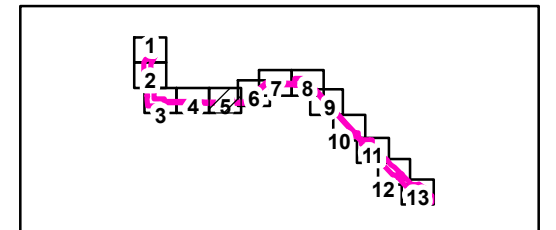
**Levy Nuclear Plant
Units 1 and 2
Part 3, Environmental Report**

Future Land Use
LNP to Proposed Central Florida South Substation
FIGURE 2.2-25



LEGEND

- Substations
- Interstate
- US road
- State road
- Toll road
- County road
- +— Railroad
- Corridor boundary
- Proposed substation areas
- County boundary

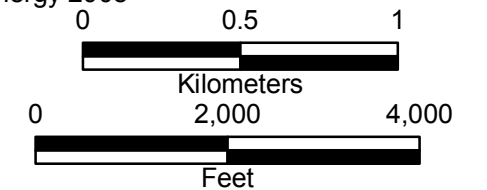


Note

1. See Figure 2.2.2-20 for Future Land Use legend

Sources

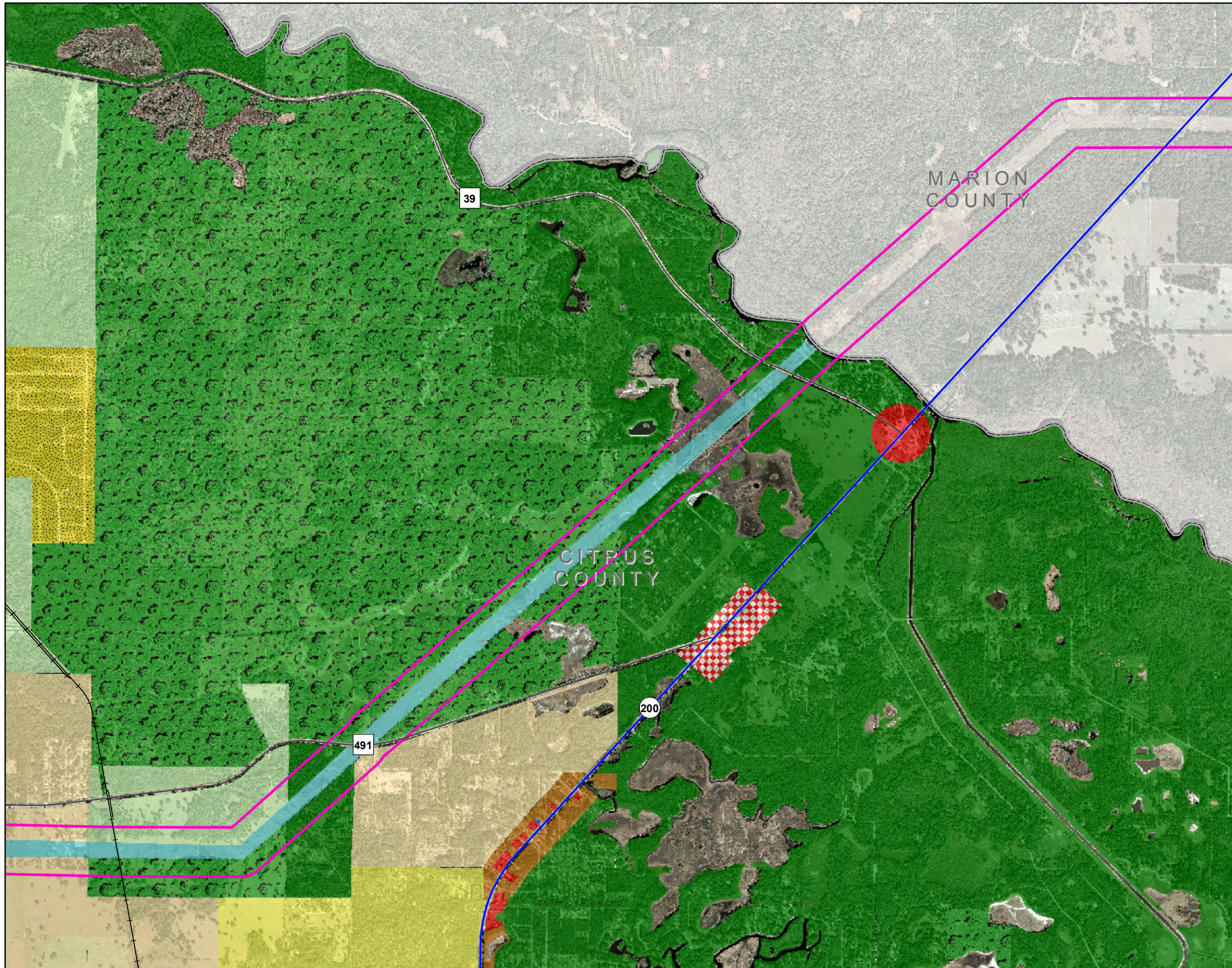
1. County boundaries - US Census Bureau
2. Major roads - Florida Department of Transportation April 2006
3. Railroads - Florida Department of Environmental Protection 1999
4. Future Land use - Current data from County and municipality planning departments 2007 and 2008
5. Aerial photography - Aerials Express January 2007
6. Proposed Levy Nuclear Plant - Progress Energy 2008
7. Corridor and proposed substation locations - Golder Associates and Progress Energy 2008



Progress Energy Florida

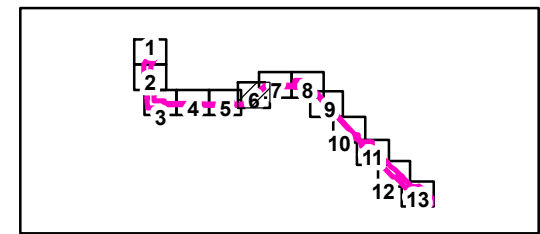
**Levy Nuclear Plant
Units 1 and 2
Part 3, Environmental Report**

Future Land Use
LNP to Proposed Central Florida South Substation
FIGURE 2.2-25

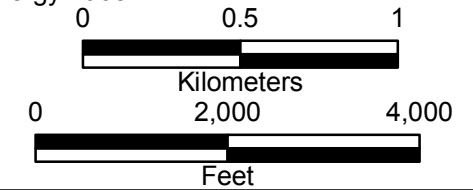


LEGEND

- Substations
- Interstate
- US road
- State road
- Toll road
- County road
- Railroad
- Corridor boundary
- Proposed substation areas
- County boundary



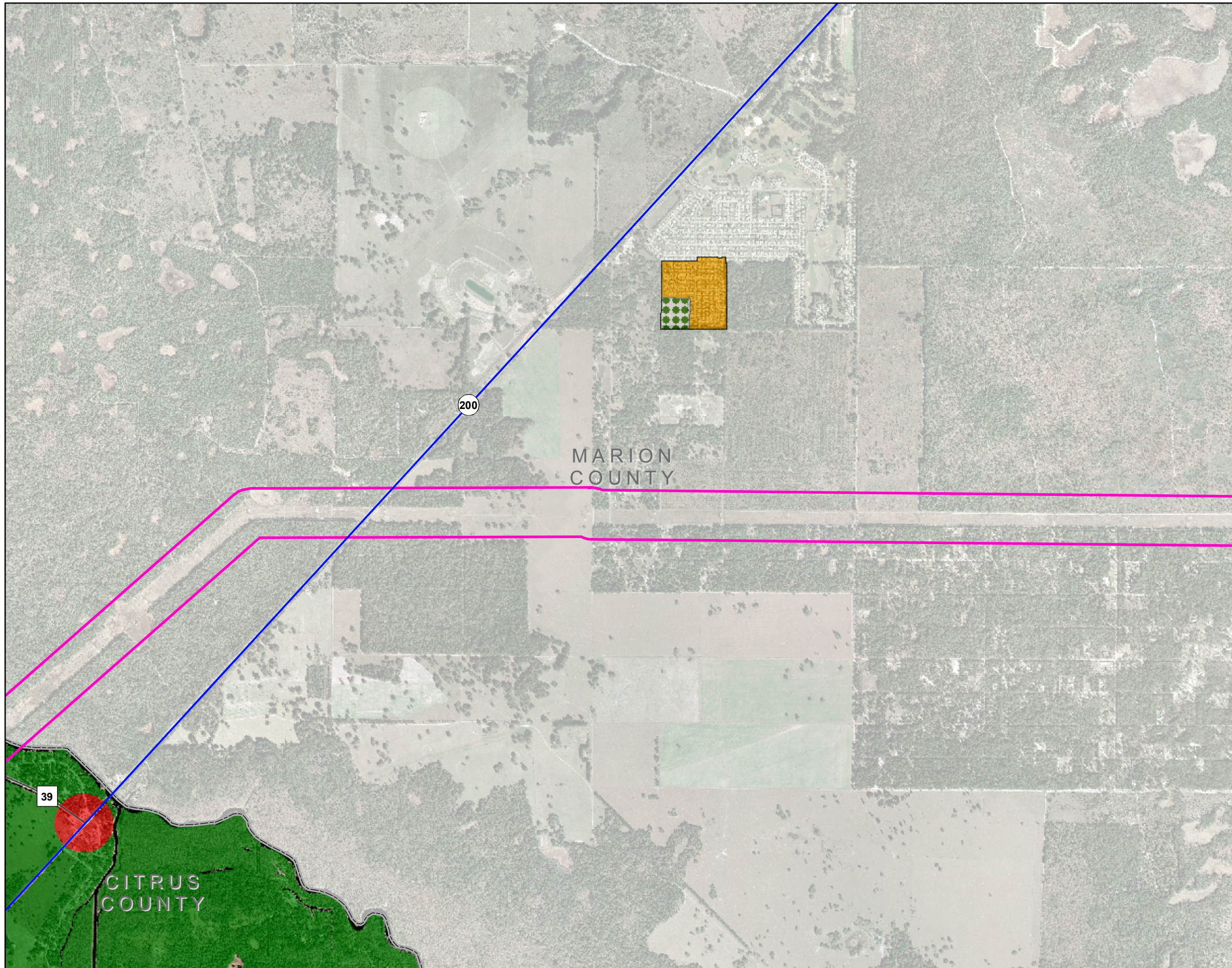
- Note**
1. See Figure 2.2.2-20 for Future Land Use legend
- Sources**
1. County boundaries - US Census Bureau
 2. Major roads - Florida Department of Transportation April 2006
 3. Railroads - Florida Department of Environmental Protection 1999
 4. Future Land use - Current data from County and municipality planning departments 2007 and 2008
 5. Aerial photography - Aerials Express January 2007
 6. Proposed Levy Nuclear Plant - Progress Energy 2008
 7. Corridor and proposed substation locations - Golder Associates and Progress Energy 2008



Progress Energy Florida

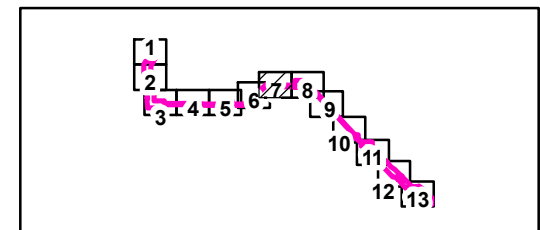
**Levy Nuclear Plant
Units 1 and 2
Part 3, Environmental Report**

Future Land Use
NLP to Proposed Central Florida South Substation
FIGURE 2.2-25
6 OF 13



LEGEND

- Substations
- Interstate
- US road
- State road
- Toll road
- County road
- Railroad
- Corridor boundary
- Proposed substation areas
- County boundary

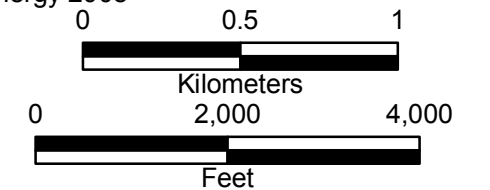


Note

1. See Figure 2.2.2-20 for Future Land Use legend

Sources

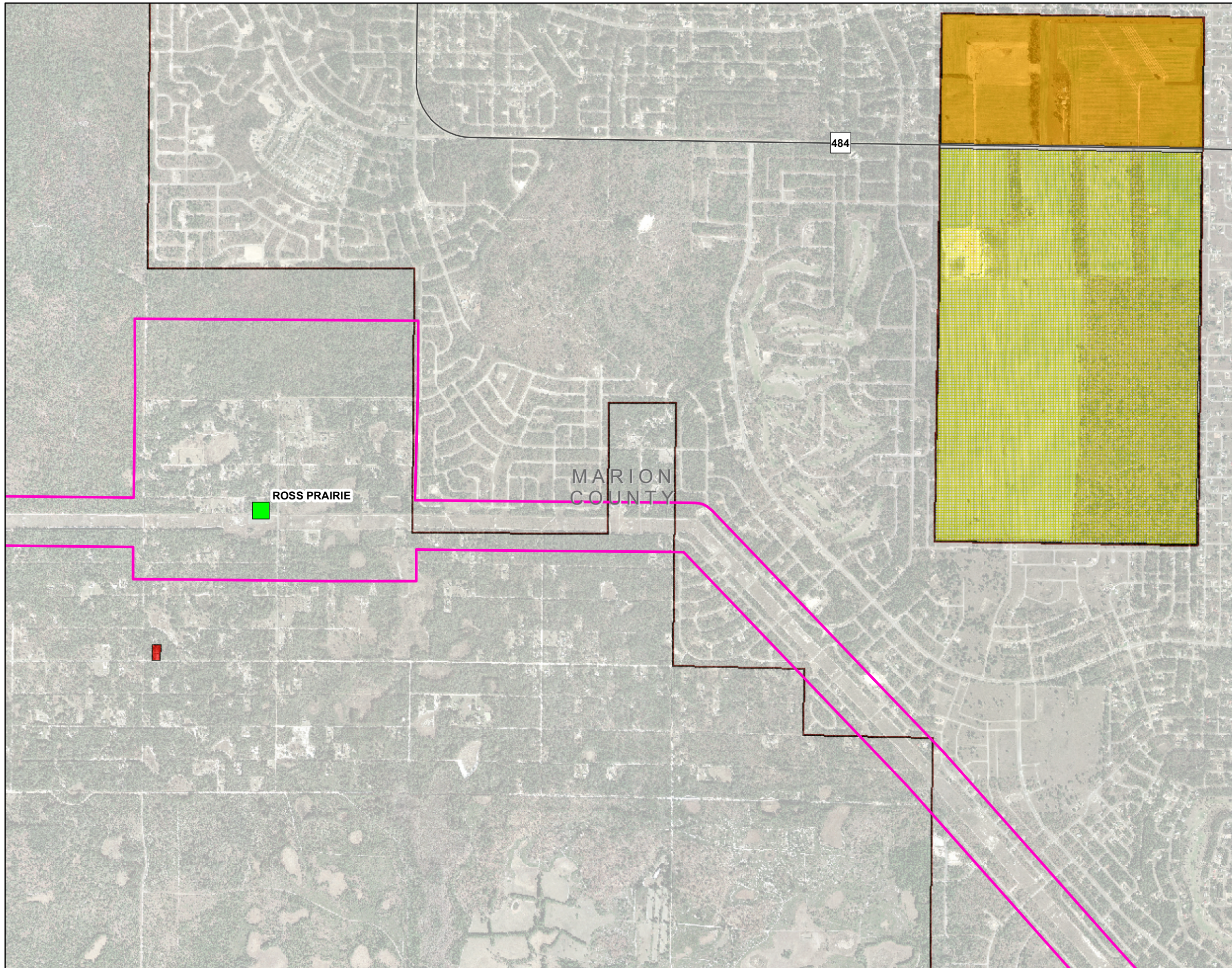
1. County boundaries - US Census Bureau
2. Major roads - Florida Department of Transportation April 2006
3. Railroads - Florida Department of Environmental Protection 1999
4. Future Land use - Current data from County and municipality planning departments 2007 and 2008
5. Aerial photography - Aerials Express January 2007
6. Proposed Levy Nuclear Plant - Progress Energy 2008
7. Corridor and proposed substation locations - Golder Associates and Progress Energy 2008



Progress Energy Florida

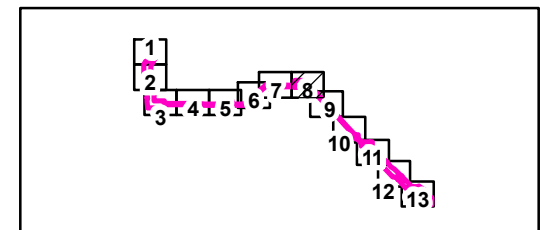
**Levy Nuclear Plant
Units 1 and 2
Part 3, Environmental Report**

Future Land Use
LNP to Proposed Central Florida South Substation
FIGURE 2.2-25



LEGEND

- Substations
- Interstate
- US road
- State road
- Toll road
- County road
- Railroad
- Corridor boundary
- Proposed substation areas
- County boundary

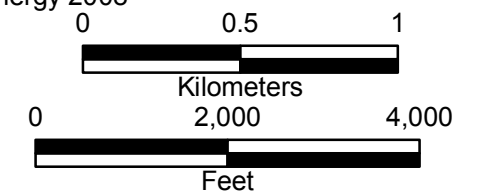


Note

1. See Figure 2.2.2-20 for Future Land Use legend

Sources

1. County boundaries - US Census Bureau
2. Major roads - Florida Department of Transportation April 2006
3. Railroads - Florida Department of Environmental Protection 1999
4. Future Land use - Current data from County and municipality planning departments 2007 and 2008
5. Aerial photography - Aerials Express January 2007
6. Proposed Levy Nuclear Plant - Progress Energy 2008
7. Corridor and proposed substation locations - Golder Associates and Progress Energy 2008



Progress Energy Florida

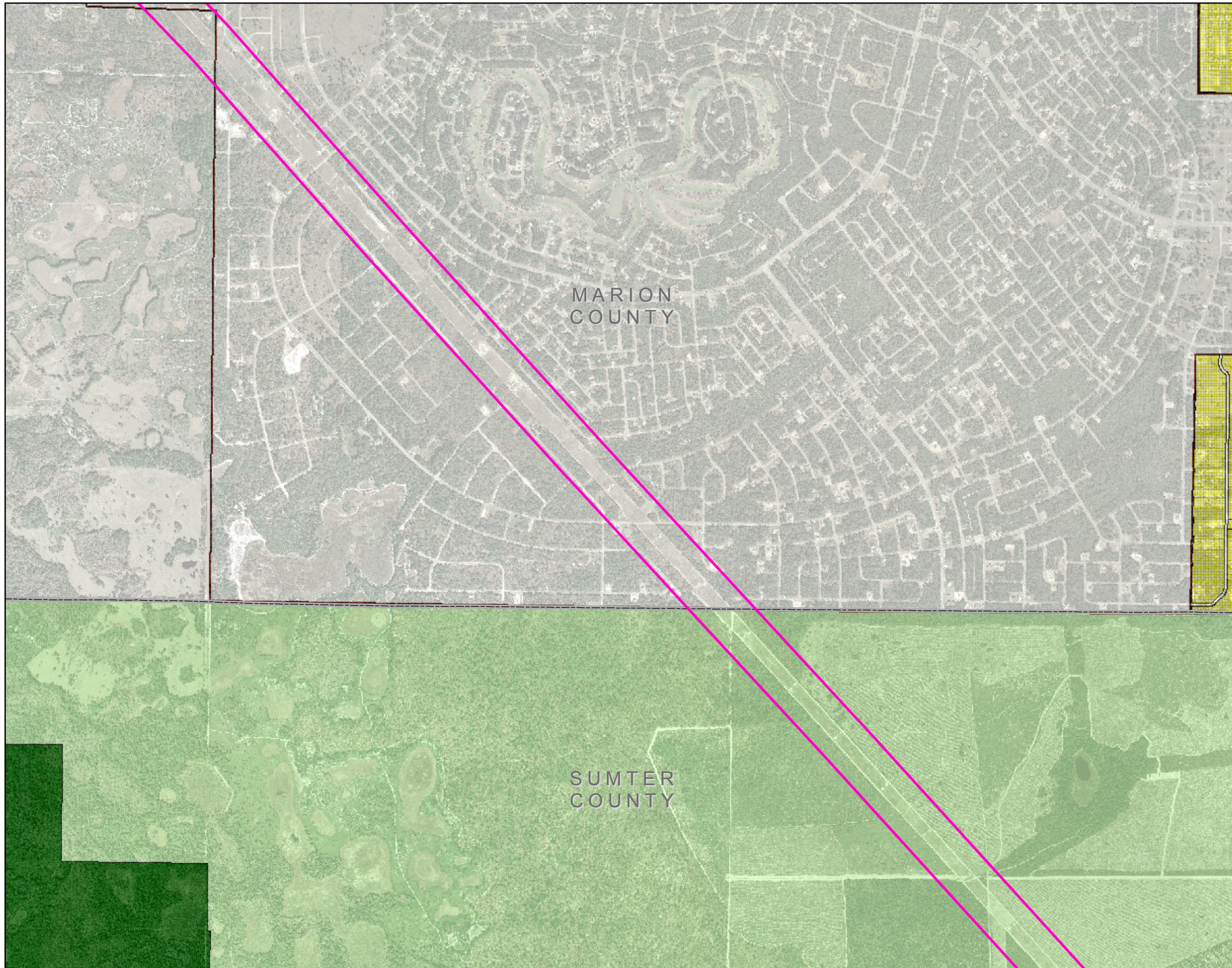
**Levy Nuclear Plant
Units 1 and 2
Part 3, Environmental Report**

Future Land Use
LNP to Proposed Central Florida South Substation

FIGURE 2.2-25

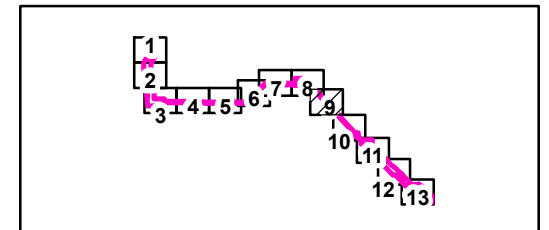
8 OF 13

Rev 0



LEGEND

- Substations
- Interstate
- US road
- State road
- Toll road
- County road
- Railroad
- Corridor boundary
- Proposed substation areas
- County boundary

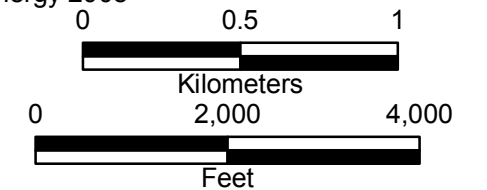


Note

1. See Figure 2.2.2-20 for Future Land Use legend

Sources

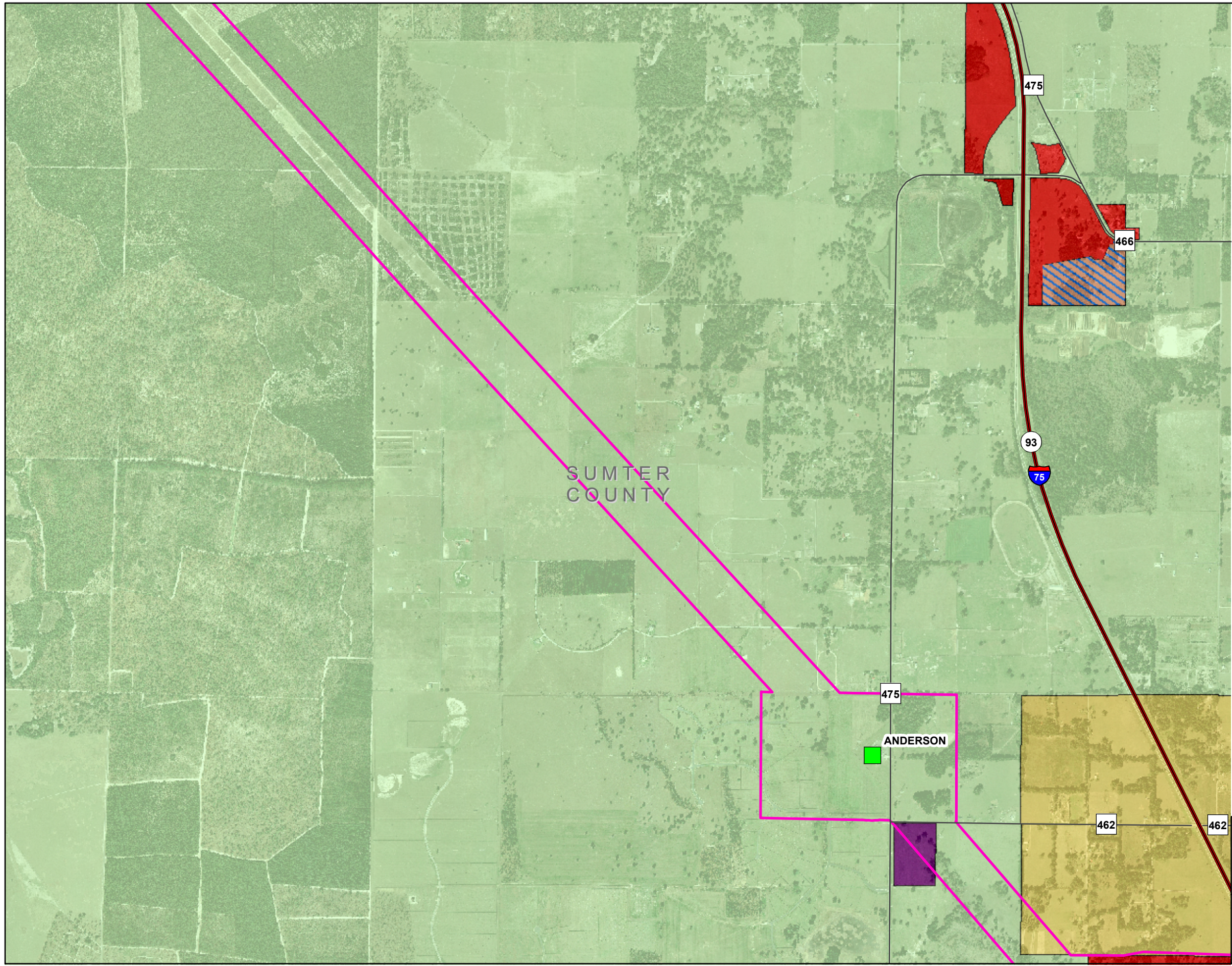
1. County boundaries - US Census Bureau
2. Major roads - Florida Department of Transportation April 2006
3. Railroads - Florida Department of Environmental Protection 1999
4. Future Land use - Current data from County and municipality planning departments 2007 and 2008
5. Aerial photography - Aerials Express January 2007
6. Proposed Levy Nuclear Plant - Progress Energy 2008
7. Corridor and proposed substation locations - Golder Associates and Progress Energy 2008



Progress Energy Florida

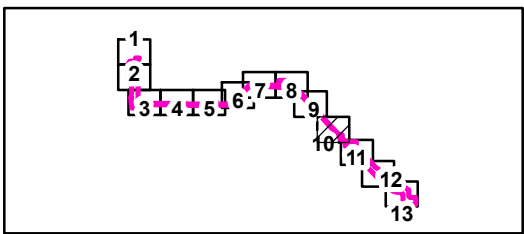
**Levy Nuclear Plant
Units 1 and 2
Part 3, Environmental Report**

Future Land Use
LNP to Proposed Central Florida South Substation
FIGURE 2.2-25



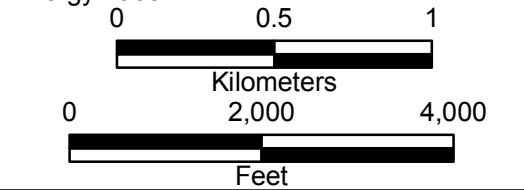
LEGEND

- Substations
- Interstate
- US road
- State road
- Toll road
- County road
- Railroad
- Corridor boundary
- Proposed substation areas
- County boundary



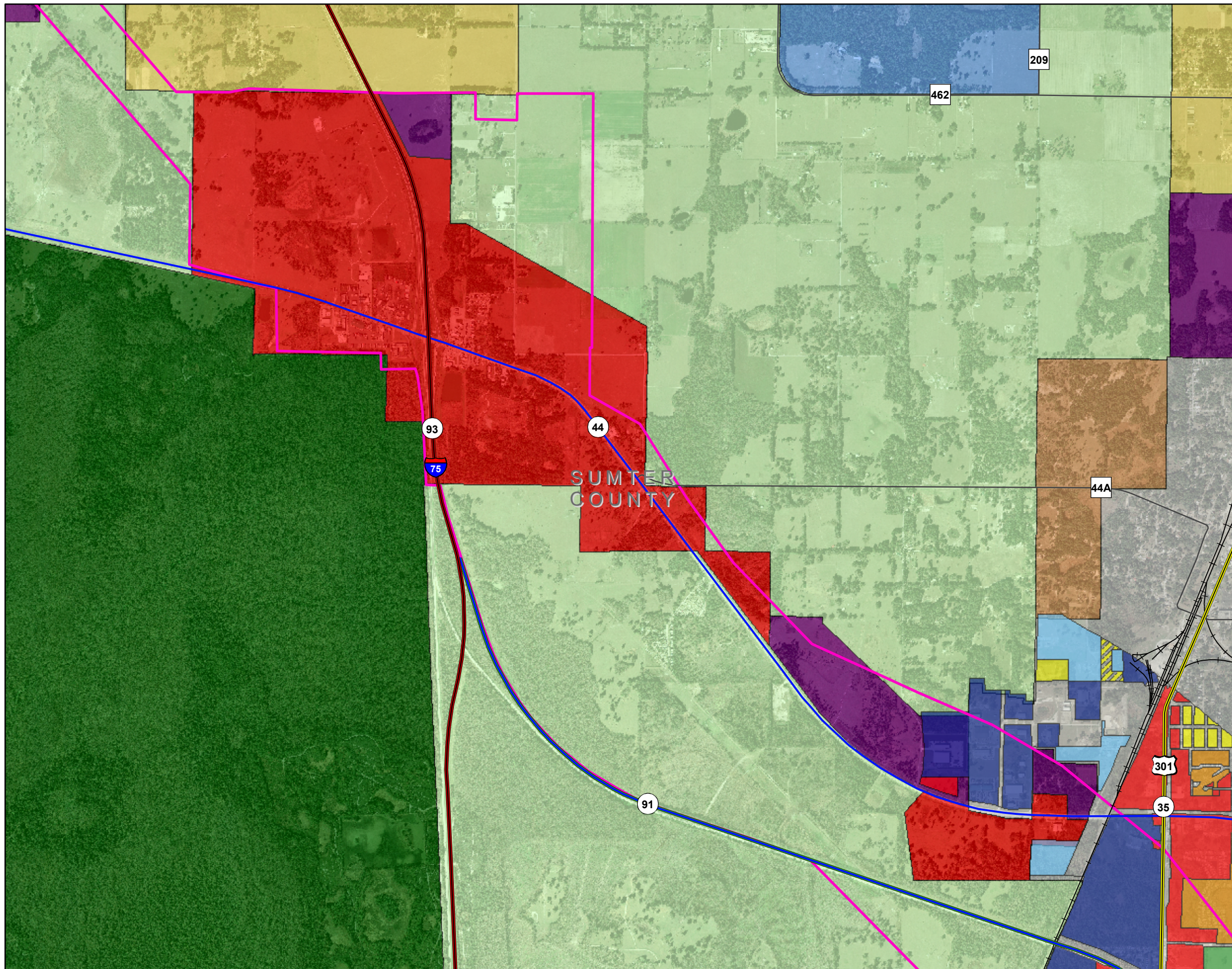
Note
 1. See Figure 2.2.2-20 for Future Land Use legend

- Sources**
1. County boundaries - US Census Bureau
 2. Major roads - Florida Department of Transportation April 2006
 3. Railroads - Florida Department of Environmental Protection 1999
 4. Future Land use - Current data from County and municipality planning departments 2007 and 2008
 5. Aerial photography - Aerials Express January 2007
 6. Proposed Levy Nuclear Plant - Progress Energy 2008
 7. Corridor and proposed substation locations - Golder Associates and Progress Energy 2008



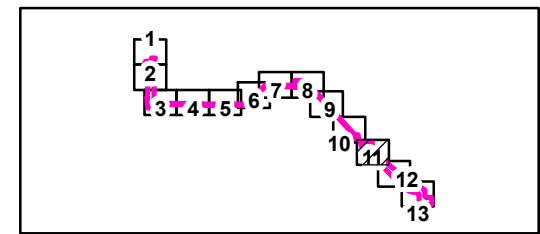
Progress Energy Florida
**Levy Nuclear Plant
 Units 1 and 2
 Part 3, Environmental Report**

Future Land Use
 LNP to Proposed Central Florida South Substation
 FIGURE 2.2-25
 10 OF 13

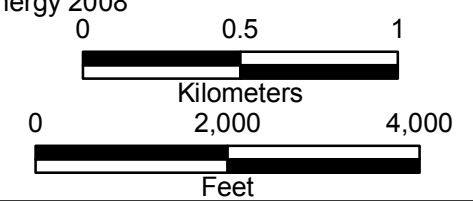


LEGEND

- Substations
- Interstate
- US road
- State road
- Toll road
- County road
- Railroad
- Corridor boundary
- Proposed substation areas
- County boundary



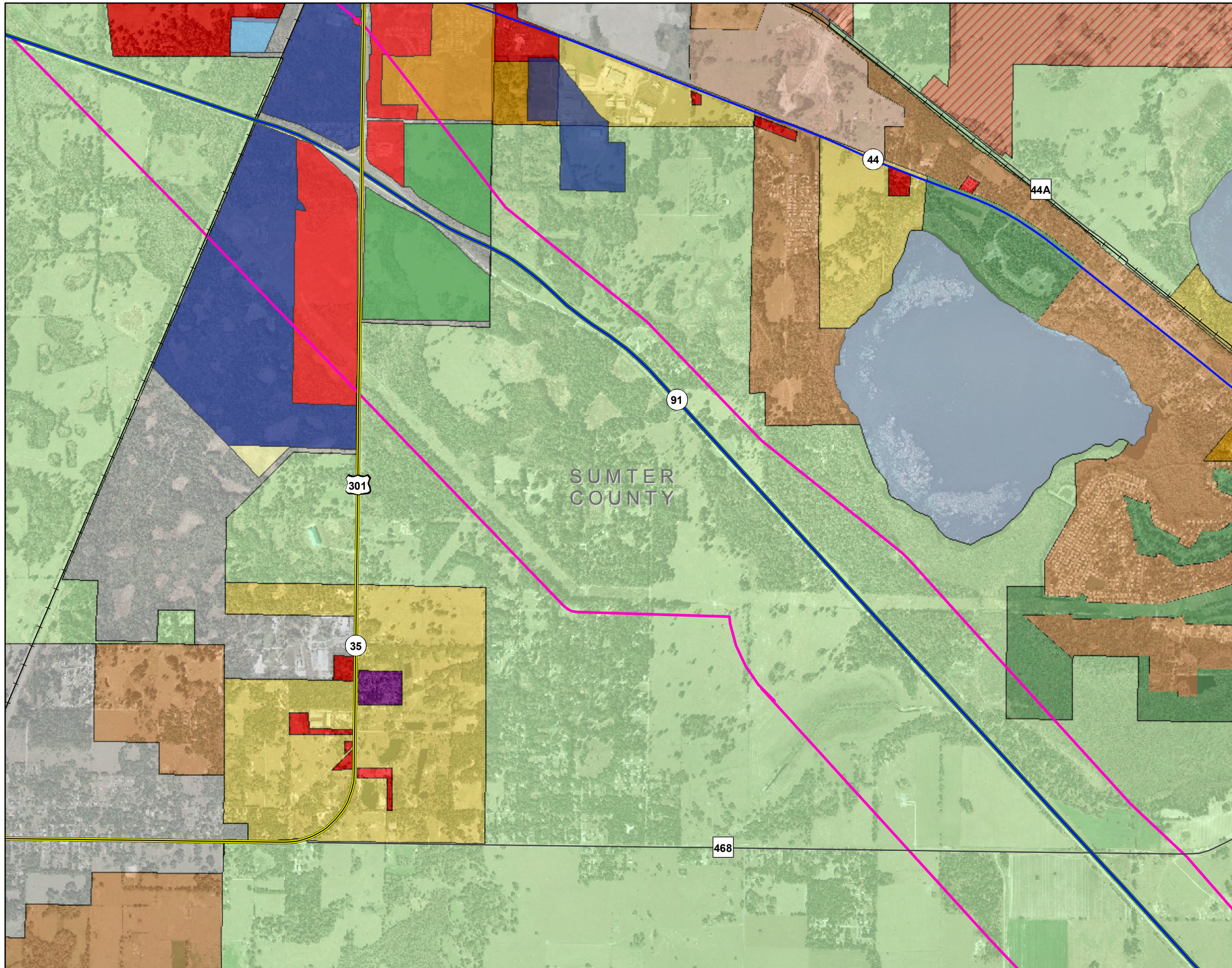
- Note**
1. See Figure 2.2.2-20 for Future Land Use legend
- Sources**
1. County boundaries - US Census Bureau
 2. Major roads - Florida Department of Transportation April 2006
 3. Railroads - Florida Department of Environmental Protection 1999
 4. Future Land use - Current data from County and municipality planning departments 2007 and 2008
 5. Aerial photography - Aerials Express January 2007
 6. Proposed Levy Nuclear Plant - Progress Energy 2008
 7. Corridor and proposed substation locations - Golder Associates and Progress Energy 2008



Progress Energy Florida

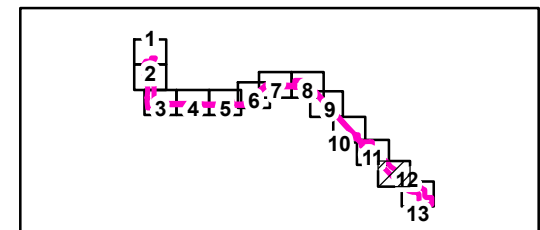
**Levy Nuclear Plant
Units 1 and 2
Part 3, Environmental Report**

Future Land Use
LNP to Proposed Central Florida South Substation
FIGURE 2.2-25
11 OF 13 Rev 0



LEGEND

- Substations
- Interstate
- US road
- State road
- Toll road
- County road
- Railroad
- Corridor boundary
- Proposed substation areas
- County boundary

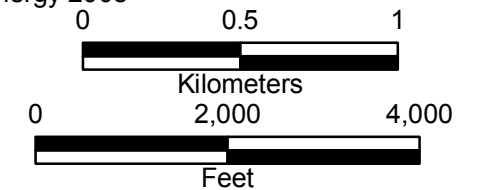


Note

1. See Figure 2.2.2-20 for Future Land Use legend

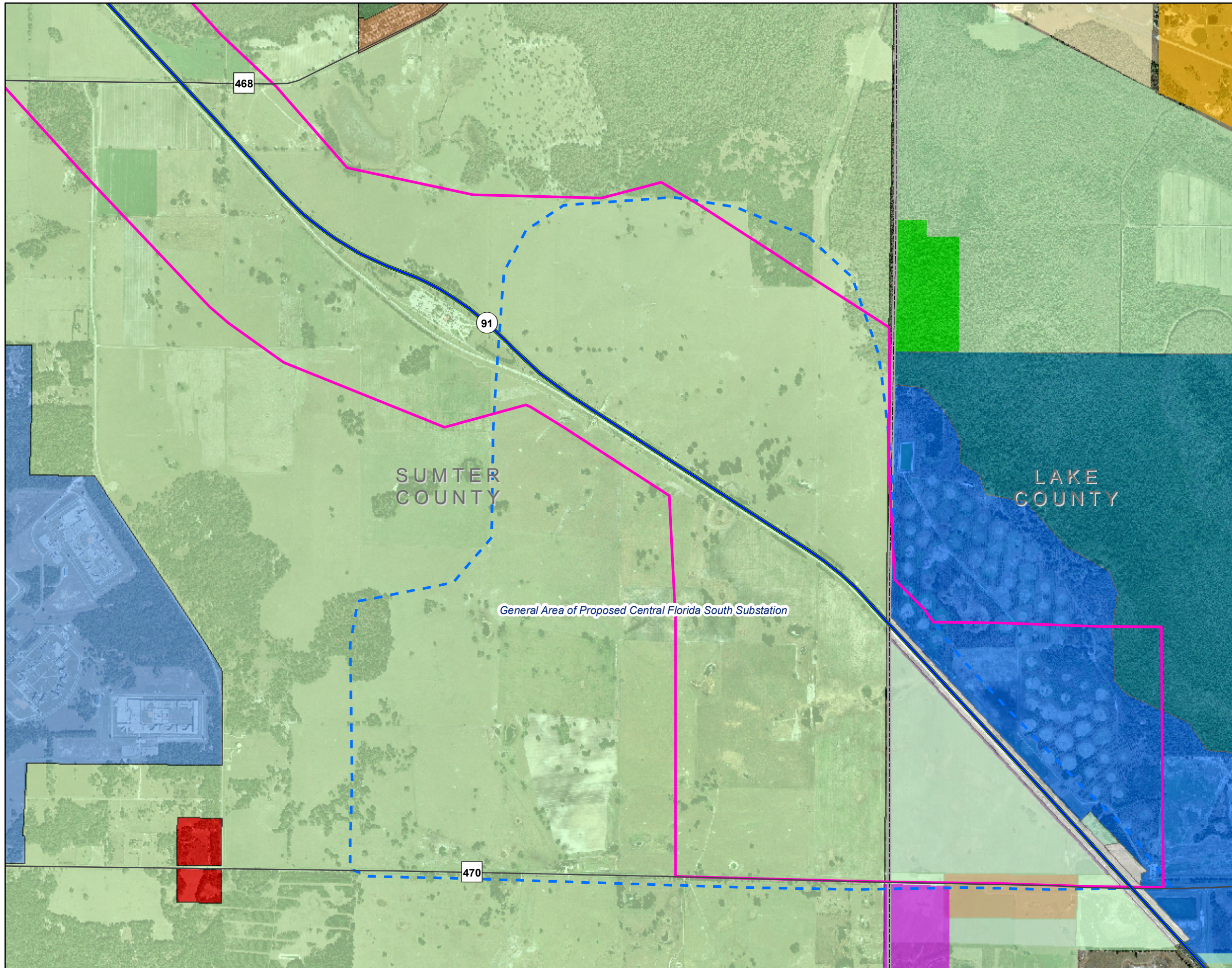
Sources

1. County boundaries - US Census Bureau
2. Major roads - Florida Department of Transportation April 2006
3. Railroads - Florida Department of Environmental Protection 1999
4. Future Land use - Current data from County and municipality planning departments 2007 and 2008
5. Aerial photography - Aerials Express January 2007
6. Proposed Levy Nuclear Plant - Progress Energy 2008
7. Corridor and proposed substation locations - Golder Associates and Progress Energy 2008



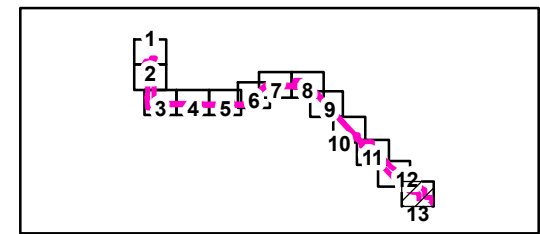
Progress Energy Florida

**Levy Nuclear Plant
Units 1 and 2
Part 3, Environmental Report**

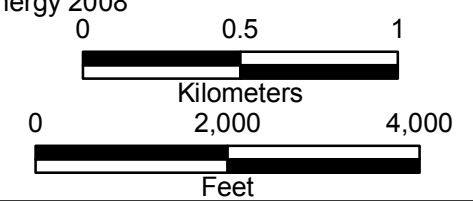


LEGEND

- Substations
- Interstate
- US road
- State road
- Toll road
- County road
- Railroad
- Corridor boundary
- Proposed substation areas
- County boundary



- Note**
1. See Figure 2.2.2-20 for Future Land Use legend
- Sources**
1. County boundaries - US Census Bureau
 2. Major roads - Florida Department of Transportation April 2006
 3. Railroads - Florida Department of Environmental Protection 1999
 4. Future Land use - Current data from County and municipality planning departments 2007 and 2008
 5. Aerial photography - Aerials Express January 2007
 6. Proposed Levy Nuclear Plant - Progress Energy 2008
 7. Corridor and proposed substation locations - Golder Associates and Progress Energy 2008



Progress Energy Florida

**Levy Nuclear Plant
Units 1 and 2
Part 3, Environmental Report**