

**LEGEND**

Substations

Interstate

US road

State road

Toll road

County road

Railroad

Corridor boundary

Proposed substation areas

County boundary

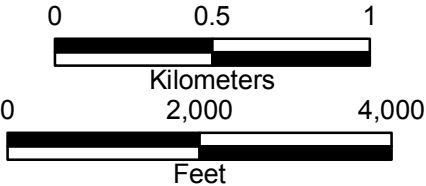
1

2

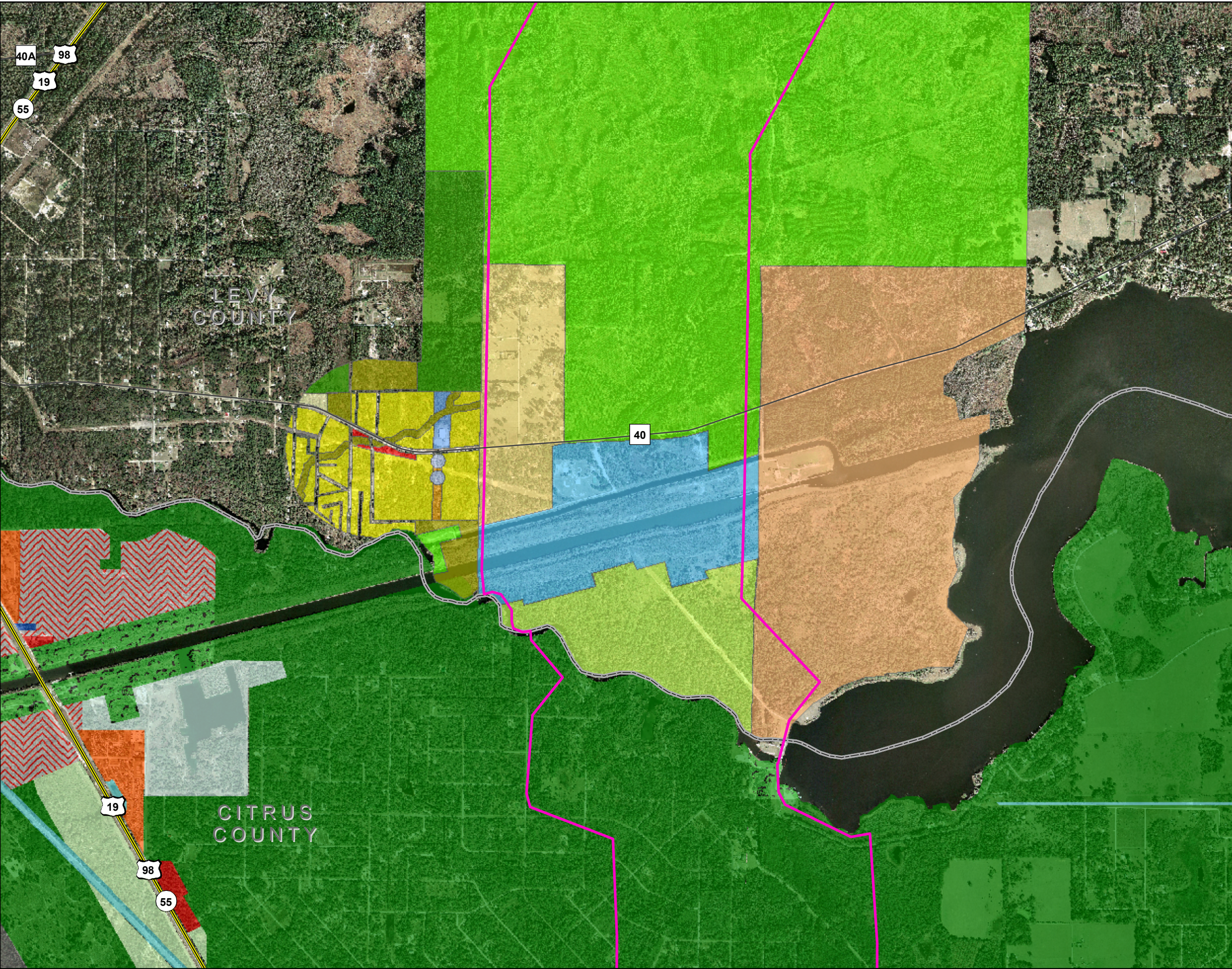
3

4

- Note**
1. See Figure 2.2.2-20 for Future Land Use legend
- Sources**
1. County boundaries - US Census Bureau
2. Major roads - Florida Department of Transportation April 2006
3. Railroads - Florida Department of Environmental Protection 1999
4. Future Land use - Current data from County and municipality planning departments 2007 and 2008
5. Aerial photography - Aerials Express January 2007
6. Proposed Levy Nuclear Plant - Progress Energy 2008
7. Corridor and proposed substation locations - Golder Associates and Progress Energy 2008

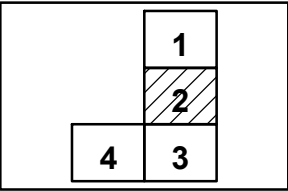






**LEGEND**

- Substations
- Interstate
- US road
- State road
- Toll road
- County road
- Railroad
- Corridor boundary
- Proposed substation areas
- County boundary

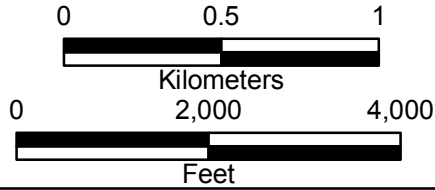


**Note**

1. See Figure 2.2.2-20 for Future Land Use legend

**Sources**

1. County boundaries - US Census Bureau
2. Major roads - Florida Department of Transportation April 2006
3. Railroads - Florida Department of Environmental Protection 1999
4. Future Land use - Current data from County and municipality planning departments 2007 and 2008
5. Aerial photography - Aerials Express January 2007
6. Proposed Levy Nuclear Plant - Progress Energy 2008
7. Corridor and proposed substation locations - Golder Associates and Progress Energy 2008



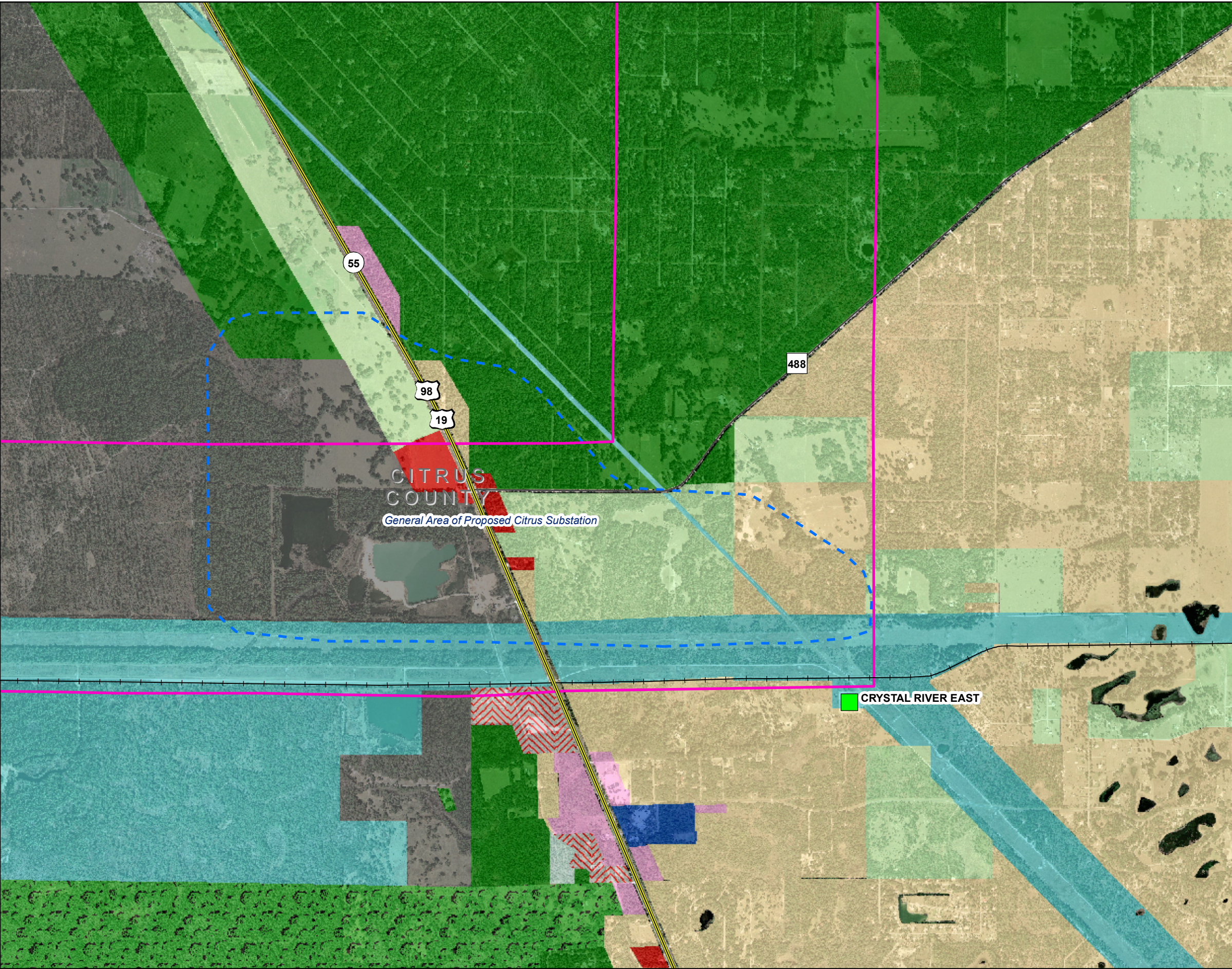
Progress Energy Florida

**Levy Nuclear Plant  
Units 1 and 2  
Part 3, Environmental Report**

Future Land Use  
LNP to CREC 500-kV Switchyard  
FIGURE 2.2-24  
2 OF 4

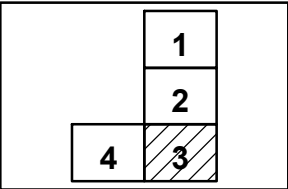
Rev 0



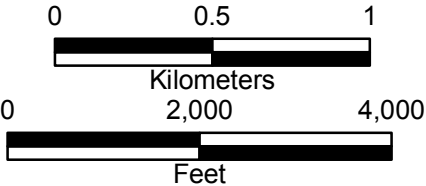


LEGEND

- Substations
- Interstate
- US road
- State road
- Toll road
- County road
- Railroad
- Corridor boundary
- Proposed substation areas
- County boundary



- Note
1. See Figure 2.2.2-20 for Future Land Use legend
- Sources
1. County boundaries - US Census Bureau
  2. Major roads - Florida Department of Transportation April 2006
  3. Railroads - Florida Department of Environmental Protection 1999
  4. Future Land use - Current data from County and municipality planning departments 2007 and 2008
  5. Aerial photography - Aerials Express January 2007
  6. Proposed Levy Nuclear Plant - Progress Energy 2008
  7. Corridor and proposed substation locations - Golder Associates and Progress Energy 2008



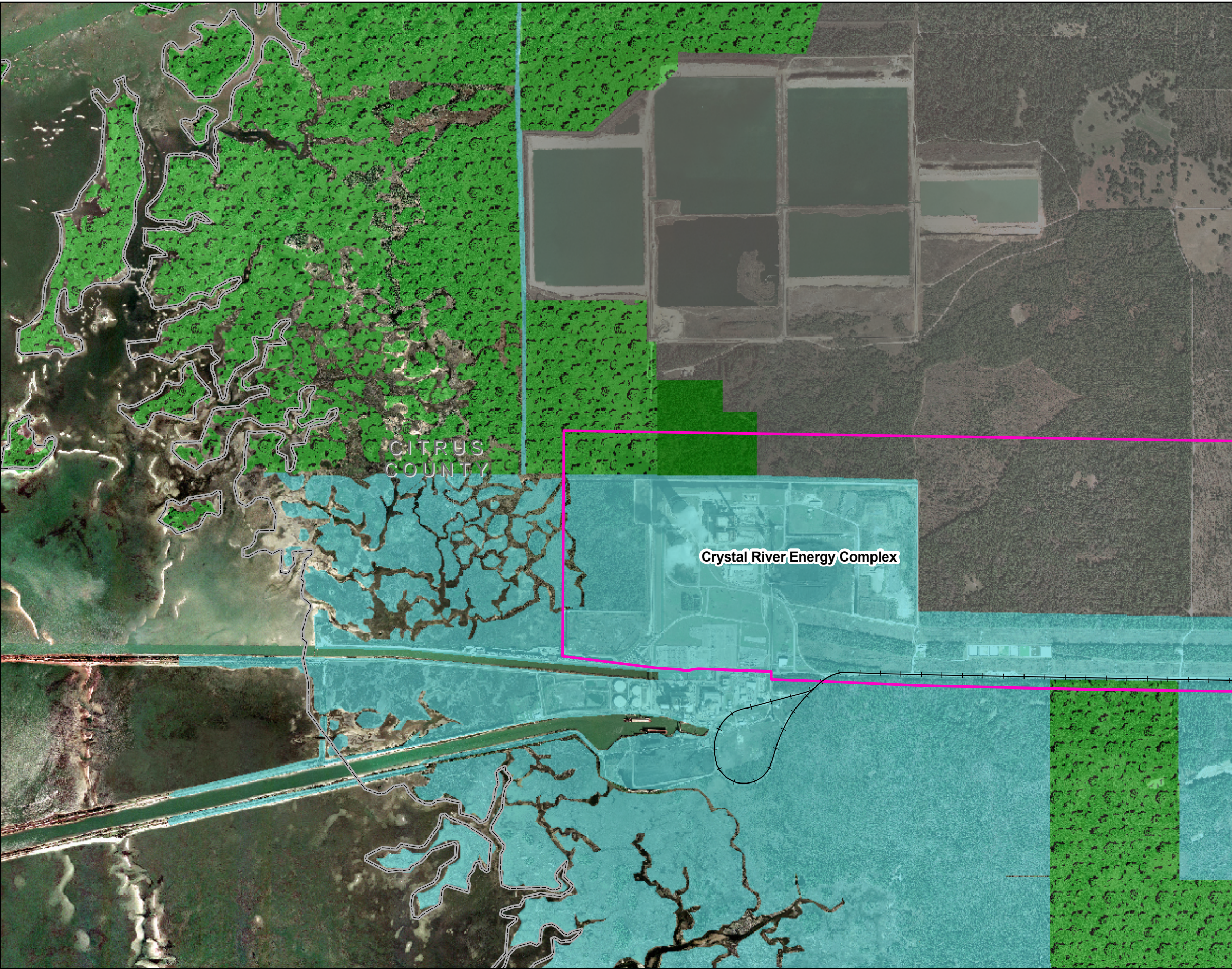
Progress Energy Florida

Levy Nuclear Plant  
Units 1 and 2  
Part 3, Environmental Report

Future Land Use  
LNP to CREC 500-kV Switchyard  
FIGURE 2.2-24  
3 OF 4

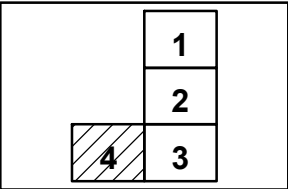
Rev 0





**LEGEND**

- Substations
- Interstate
- US road
- State road
- Toll road
- County road
- Railroad
- Corridor boundary
- Proposed substation areas
- County boundary

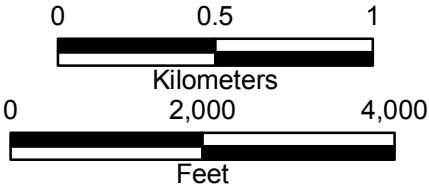


**Note**

1. See Figure 2.2.2-20 for Future Land Use legend

**Sources**

- 1. County boundaries - US Census Bureau
- 2. Major roads - Florida Department of Transportation April 2006
- 3. Railroads - Florida Department of Environmental Protection 1999
- 4. Future Land use - Current data from County and municipality planning departments 2007 and 2008
- 5. Aerial photography - Aerials Express January 2007
- 6. Proposed Levy Nuclear Plant - Progress Energy 2008
- 7. Corridor and proposed substation locations - Golder Associates and Progress Energy 2008



Progress Energy Florida

**Levy Nuclear Plant  
Units 1 and 2  
Part 3, Environmental Report**

Future Land Use  
LNP to CREC 500-kV Switchyard  
FIGURE 2.2-24  
4 OF 4

Rev 0