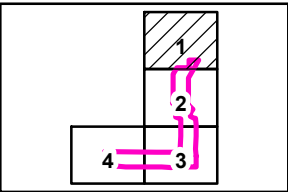
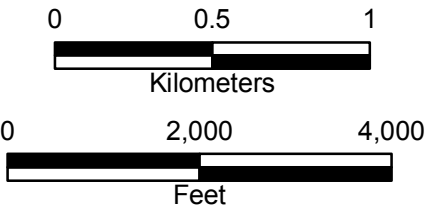


**LEGEND**

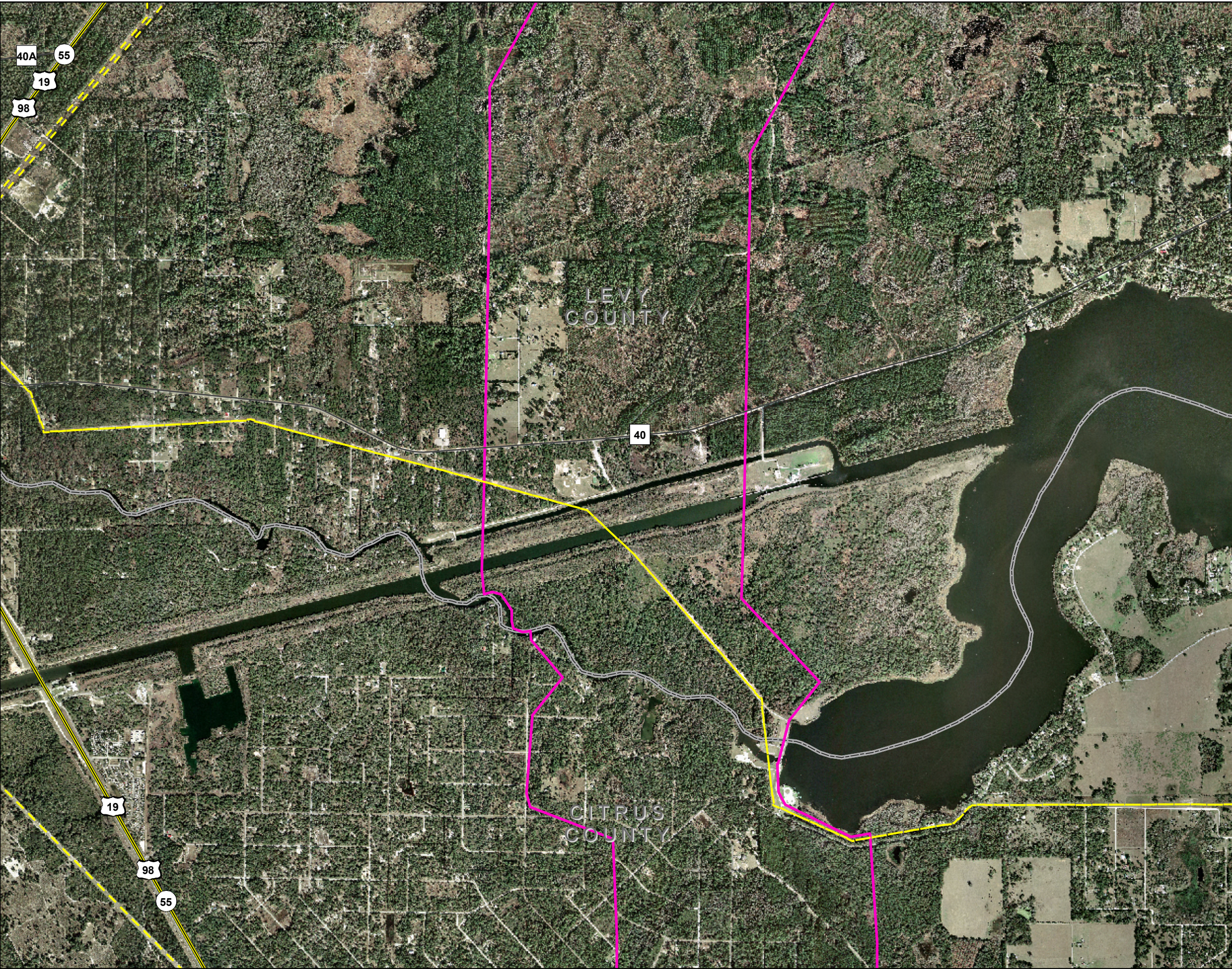
- Substations
- Existing HV Transmission
- Interstate
- US road
- State road
- Toll road
- County road
- Railroad
- Corridor boundary
- Proposed LNP
- Proposed substation areas
- County boundary




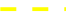







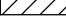


- Sources**
- 1. County boundaries - US Census Bureau
  - 2. Major roads - Florida Department of Transportation April 2006
  - 3. Railroads - Florida Department of Environmental Protection 1999
  - 4. Aerial photography - Aerials Express January 2007
  - 6. Proposed Levy Nuclear Plant - Progress Energy 2008
  - 7. Corridor and proposed substation locations - Golder Associates and Progress Energy 2008

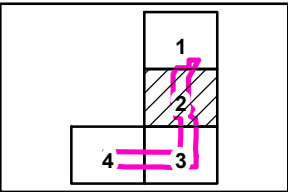






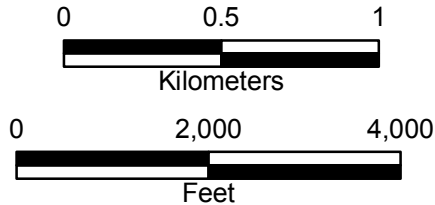
**LEGEND**

-  Substations
-  Existing HV Transmission
-  Interstate
-  US road
-  State road
-  Toll road
-  County road
-  Railroad
-  Corridor boundary
-  Proposed LNP
-  Proposed substation areas
-  County boundary



**Sources**

1. County boundaries - US Census Bureau
2. Major roads - Florida Department of Transportation April 2006
3. Railroads - Florida Department of Environmental Protection 1999
4. Aerial photography - Aerials Express January 2007
6. Proposed Levy Nuclear Plant - Progress Energy 2008
7. Corridor and proposed substation locations - Golder Associates and Progress Energy 2008



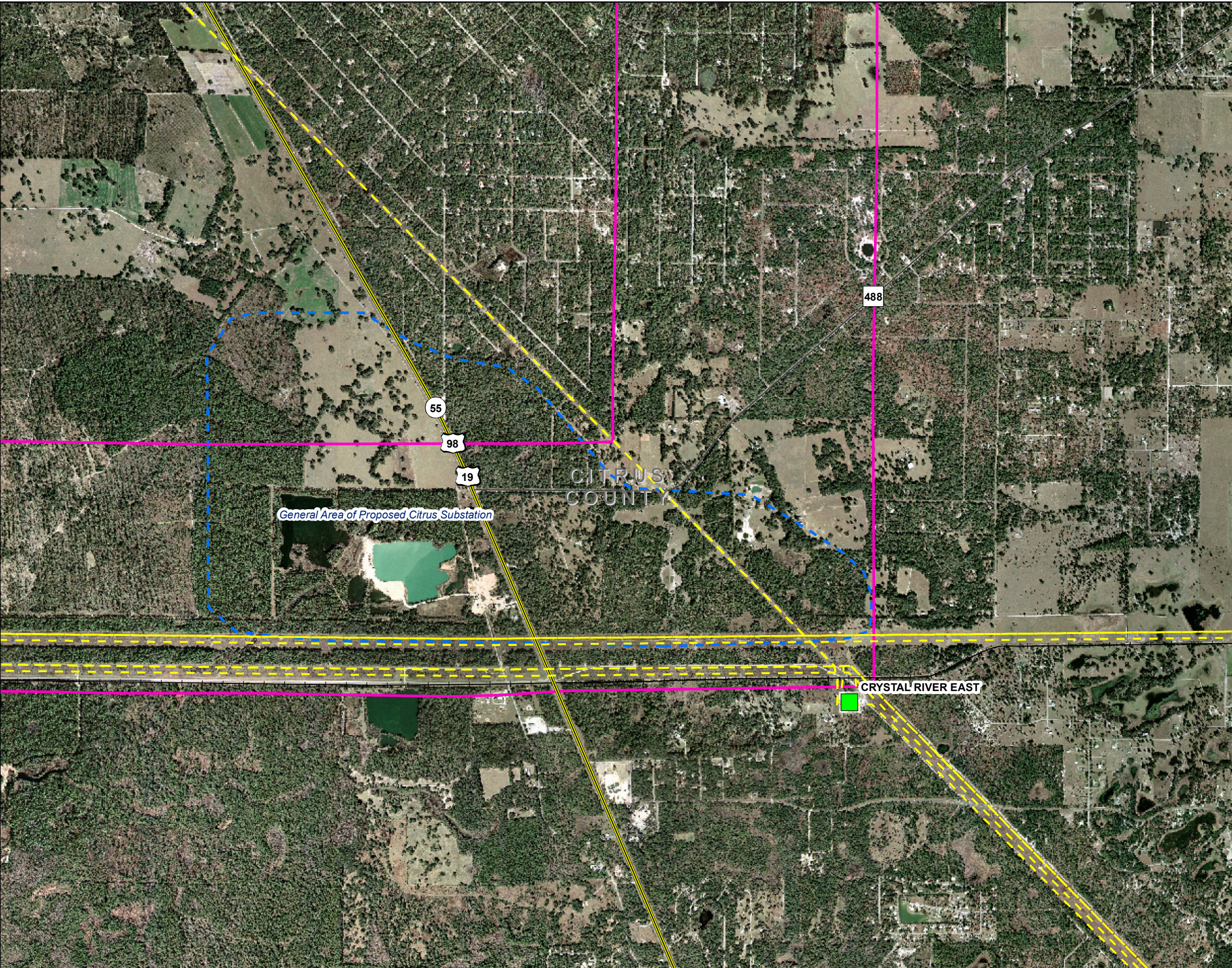
Progress Energy Florida

**Levy Nuclear Plant  
Units 1 and 2  
Part 3, Environmental Report**

LNP to CREC 500-kV Switchyard  
Sectional Maps  
FIGURE 2.2-10  
2 OF 4

Rev 0





**LEGEND**

Substations

Existing HV Transmission

Interstate

US road

State road

Toll road

County road

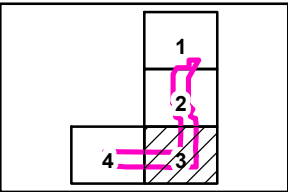
Railroad

Corridor boundary

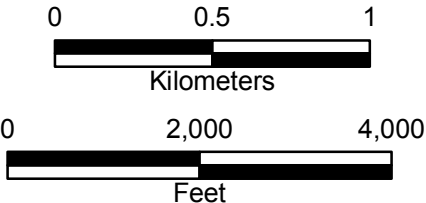
Proposed LNP

Proposed substation areas

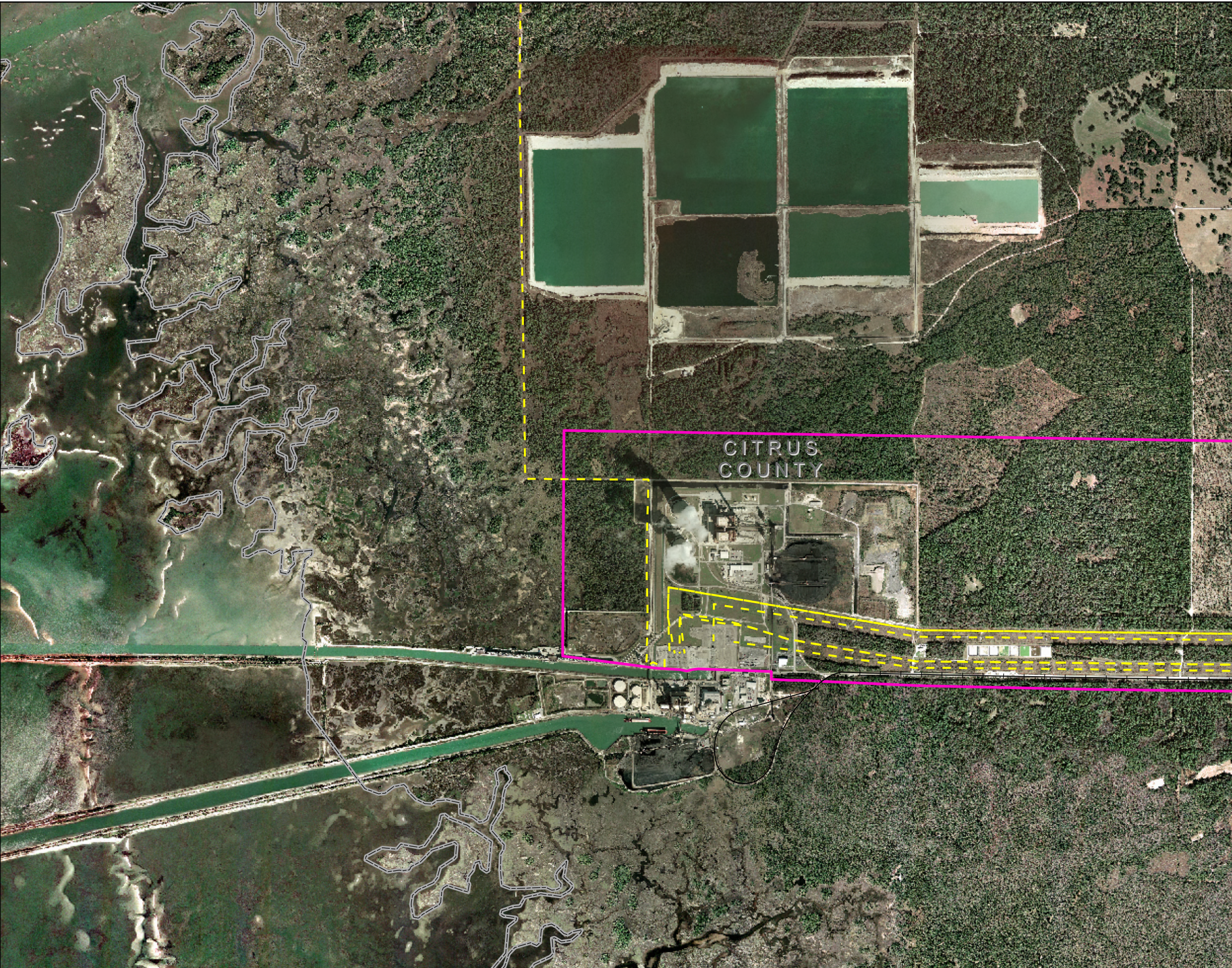
County boundary



- Sources**
1. County boundaries - US Census Bureau
  2. Major roads - Florida Department of Transportation April 2006
  3. Railroads - Florida Department of Environmental Protection 1999
  4. Aerial photography - Aerials Express January 2007
  6. Proposed Levy Nuclear Plant - Progress Energy 2008
  7. Corridor and proposed substation locations - Golder Associates and Progress Energy 2008

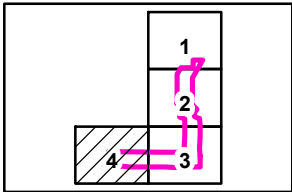






**LEGEND**

- Substations
- Existing HV Transmission
- Interstate
- US road
- State road
- Toll road
- County road
- Railroad
- Corridor boundary
- Proposed LNP
- Proposed substation areas
- County boundary



- Sources**
- County boundaries - US Census Bureau
  - Major roads - Florida Department of Transportation April 2006
  - Railroads - Florida Department of Environmental Protection 1999
  - Aerial photography - Aerials Express January 2007
  - Proposed Levy Nuclear Plant - Progress Energy 2008
  - Corridor and proposed substation locations - Golder Associates and Progress Energy 2008

