

PMBelCOL PEmails

From: Sebrosky, Joseph
Sent: Friday, September 04, 2009 2:09 PM
To: 'andrea sterdis'; 'Spink, Thomas E'; 'Amy Aughtman'; 'Wes Sparkman'
Cc: Joshi, Ravindra; Anderson, Brian; Hughes, Brian; Simms, Tanya; Coffin, Stephanie; BelCol Resource; Haggerty, Sharon; Patel, Chandu; Goetz, Sujata; Huang, Jason; Snyder, Amy; Habib, Donald; Comar, Manny; VogtleCOL Resource; 'bobhirman@live.com'; 'richard.grumbir@excelservices.com'; 'erg-xl@cox.net'; Martin, Jody; Hodgdon, Ann; Wade, Tony
Subject: Bellefonte chapter 2 ser with open items (4th email)
Attachments: Bellefonte ser chapter 2 - 2.5.3 and 2.5.4 figures.pdf

To all,

Attached is the fourth of 4 emails transmitting Chapter 2 of the Bellefonte SER with open items. There is one cover letter and 4 pdf files associated with Chapter 2. Chapter 2 was broken into several files because of its size. Please note that we are conservatively marking each page of the SER as proprietary until either: 1) 10 days have past and we have not heard from TVA regarding a proprietary claim, or 2) TVA informs us that there is no proprietary information in the document. Once it is clear that there is no proprietary information in the Chapter the proprietary markings will be removed and the rest of the distribution for the document will be completed.

Sincerely,

Joe Sebrosky
Senior Project Manager
NRO/DNRL/NWE1
301-415-1132

Hearing Identifier: Bellefonte_COL_Public_EX
Email Number: 1677

Mail Envelope Properties (B4ECC0E252653F48B3F57C3B833465E8102407FEAC)

Subject: Bellefonte chapter 2 ser with open items (4th email)
Sent Date: 9/4/2009 2:08:42 PM
Received Date: 9/4/2009 2:12:56 PM
From: Sebrosky, Joseph

Created By: Joseph.Sebrosky@nrc.gov

Recipients:

"Joshi, Ravindra" <Ravindra.Joshi@nrc.gov>
Tracking Status: None
"Anderson, Brian" <Brian.Anderson@nrc.gov>
Tracking Status: None
"Hughes, Brian" <Brian.Hughes@nrc.gov>
Tracking Status: None
"Simms, Tanya" <Tanya.Simms@nrc.gov>
Tracking Status: None
"Coffin, Stephanie" <Stephanie.Coffin@nrc.gov>
Tracking Status: None
"BelCol Resource" <BelCol.Resource@nrc.gov>
Tracking Status: None
"Haggerty, Sharon" <Sharon.Haggerty@nrc.gov>
Tracking Status: None
"Patel, Chandu" <Chandu.Patel@nrc.gov>
Tracking Status: None
"Goetz, Sujata" <Sujata.Goetz@nrc.gov>
Tracking Status: None
"Huang, Jason" <Jason.Huang@nrc.gov>
Tracking Status: None
"Snyder, Amy" <Amy.Snyder@nrc.gov>
Tracking Status: None
"Habib, Donald" <Donald.Habib@nrc.gov>
Tracking Status: None
"Comar, Manny" <Manny.Comar@nrc.gov>
Tracking Status: None
"VogtleCOL Resource" <VogtleCOL.Resource@nrc.gov>
Tracking Status: None
"bobhirman@live.com" <bobhirman@live.com>
Tracking Status: None
"richard.grumbir@excelservices.com" <richard.grumbir@excelservices.com>
Tracking Status: None
"erg-xl@cox.net" <erg-xl@cox.net>
Tracking Status: None
"Martin, Jody" <Jody.Martin@nrc.gov>
Tracking Status: None
"Hodgdon, Ann" <Ann.Hodgdon@nrc.gov>
Tracking Status: None
"Wade, Tony" <Tony.Wade@nrc.gov>
Tracking Status: None
"andrea sterdis" <alsterdis@tva.gov>

Tracking Status: None
"Spink, Thomas E" <tespink@tva.gov>
Tracking Status: None
"Amy Aughtman" <agaughtm@southernco.com>
Tracking Status: None
"Wes Sparkman" <wasparkm@southernco.com>
Tracking Status: None

Post Office: HQCLSTR02.nrc.gov

Files	Size	Date & Time
MESSAGE	810	9/4/2009 2:12:56 PM
Bellefonte ser chapter 2 - 2.5.3 and 2.5.4 figures.pdf		1204481

Options
Priority: Standard
Return Notification: No
Reply Requested: No
Sensitivity: Normal
Expiration Date:
Recipients Received:

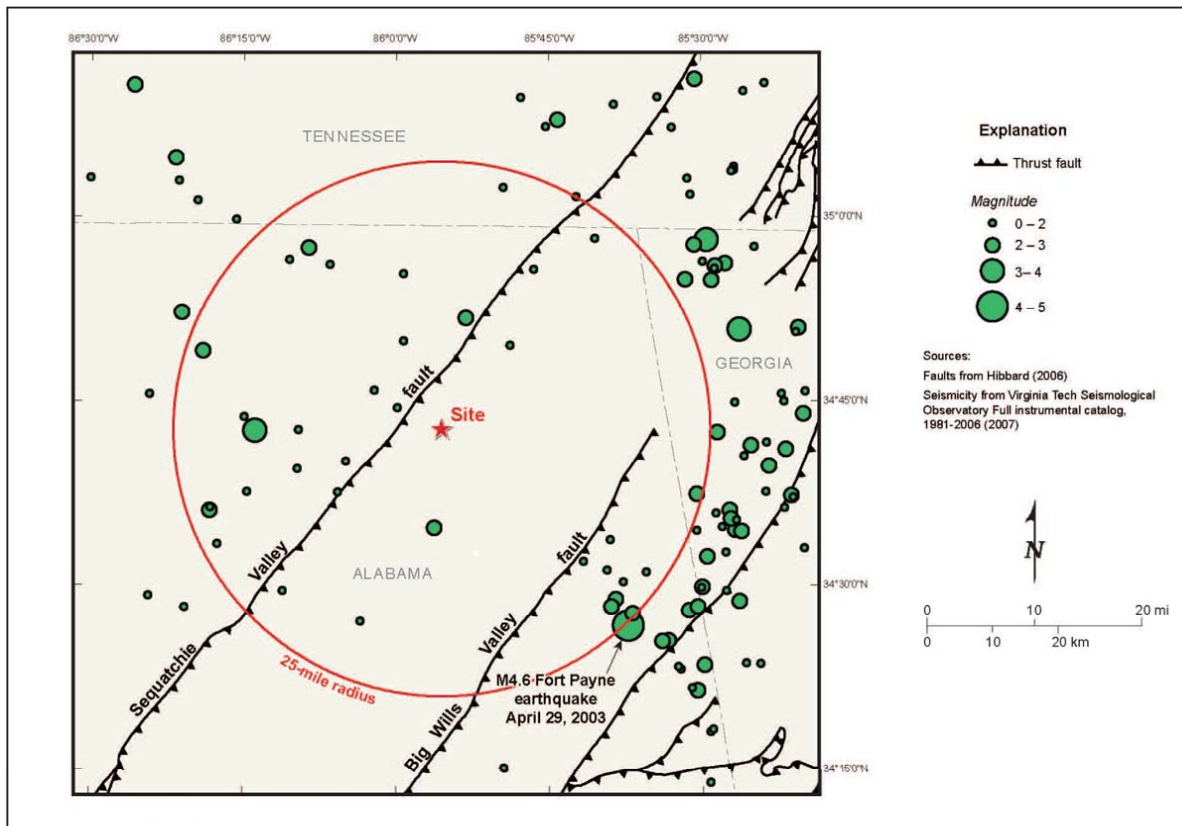


Figure 2.5.3-1 Instrumental Seismicity Relative to Mapped Faults in the Bellefonte Site Vicinity

Bellefonte Nuclear Plant
Units 3 and 4

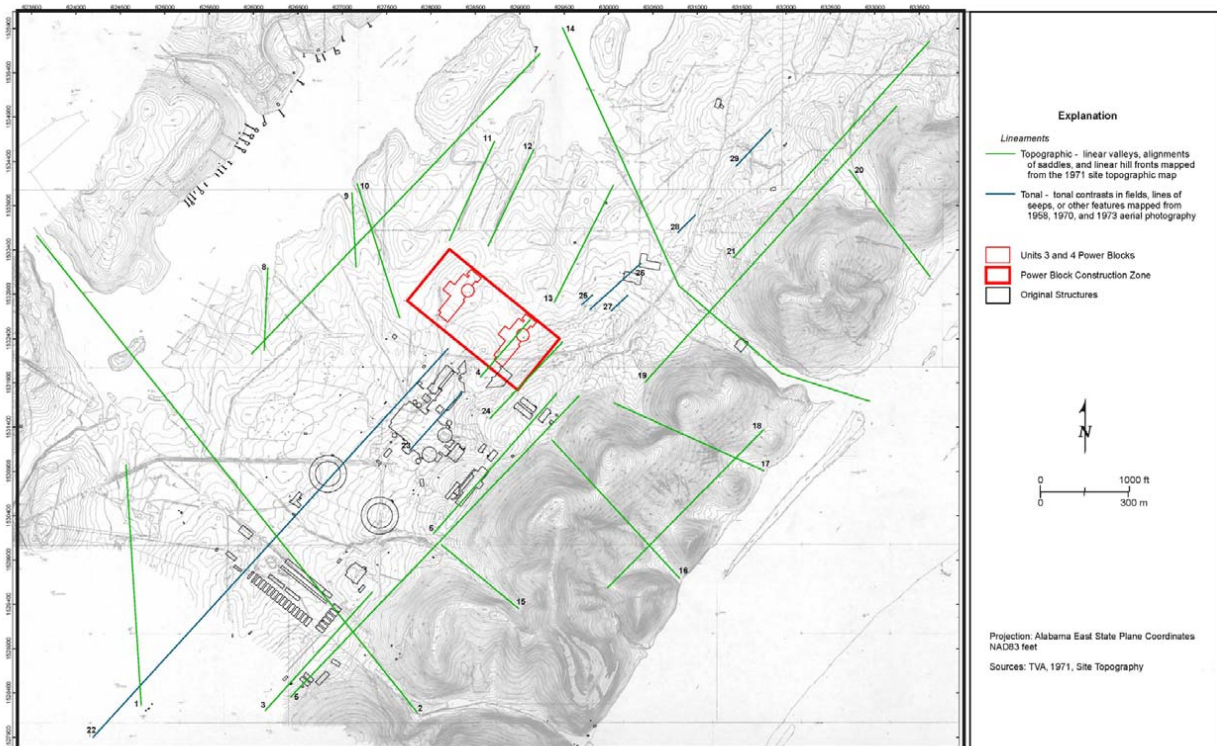


Figure 2.5.3-2 Lineaments interpreted within the Bellefonte Site Vicinity
(Reproduced from FSAR Figure 2.5-291)



Figure 2.5.4-1 Aerial View of BLN Units 3 and 4 Power Block Construction Zone (FSAR Figure 2.5-295)



Bellefonte Nuclear Plant
Units 3 and 4

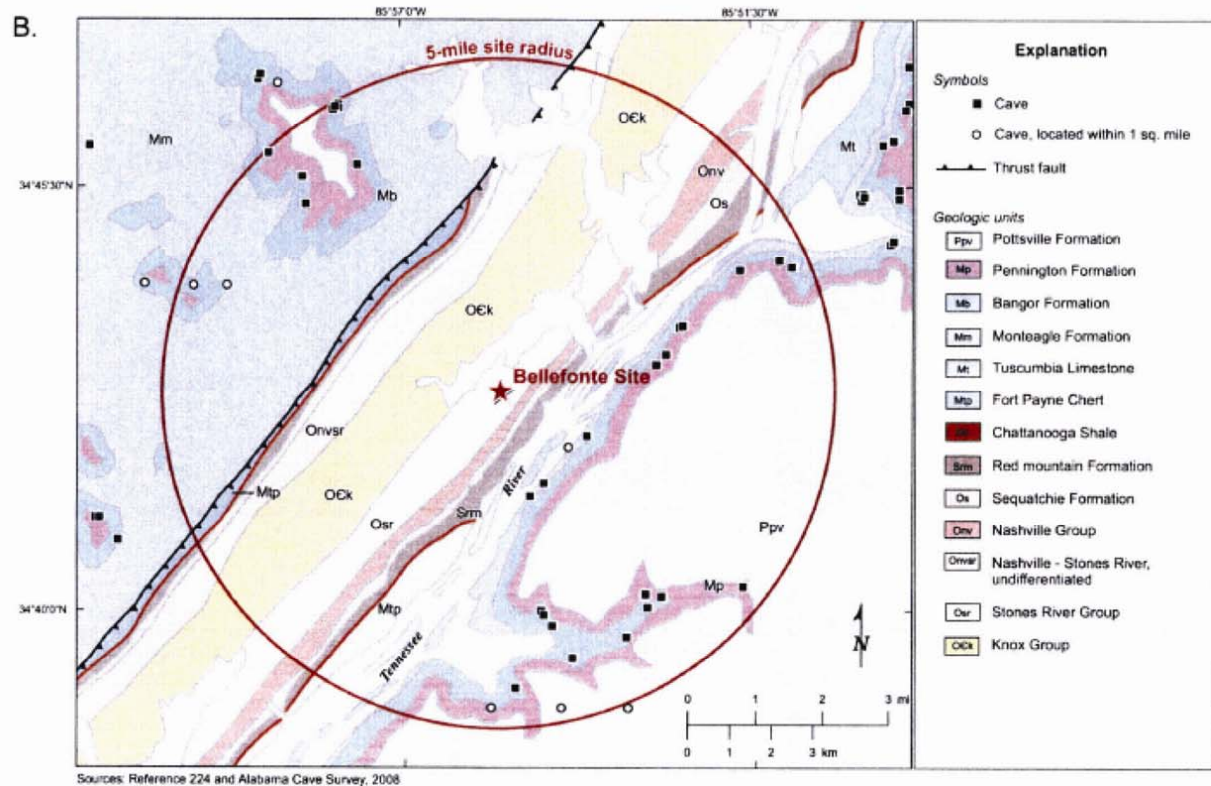


Figure 2.5.4-3 Location of Known Caves within 5 miles of the BLN Site (reproduced from FSAR Figure 2.5-303b)

Bellefonte Nuclear Plant
Units 3 and 4

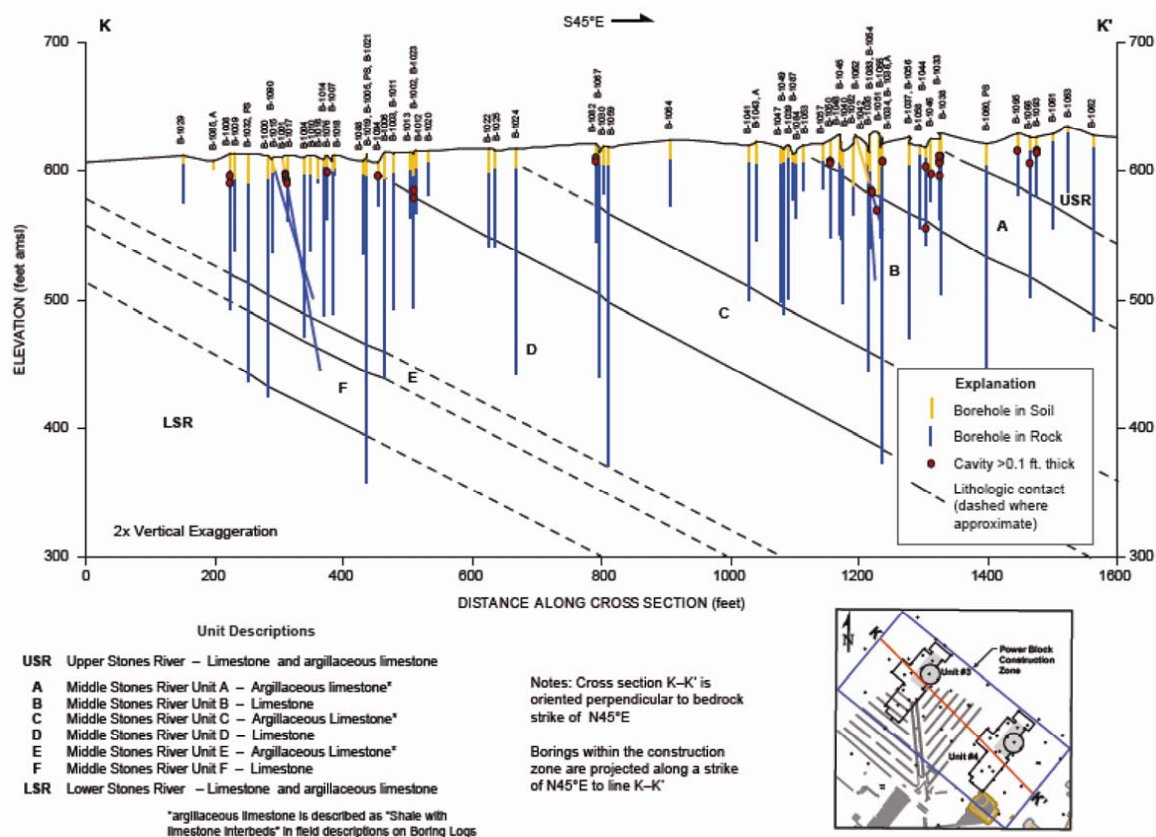


Figure 2.5.4-4 Cross Section Demonstrating the Relationship of Cavities to Boreholes at the BLN Site
(reproduced from FSAR Figure 2.5-306)

Bellefonte Nuclear Plant
Units 3 and 4

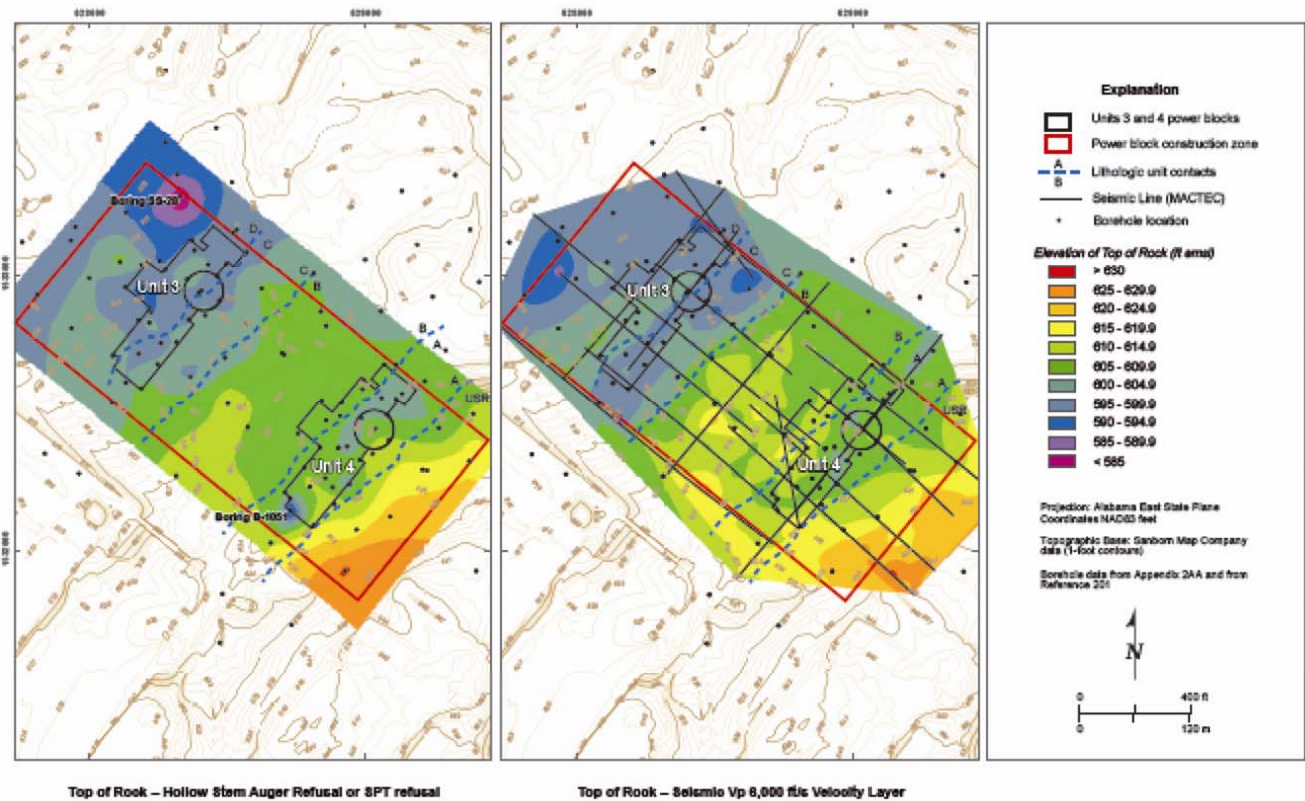


Figure 2.5.4-5 Contour Map of the Bedrock Surface
(reproduced from FSAR Figure 2.5-310)



2-257

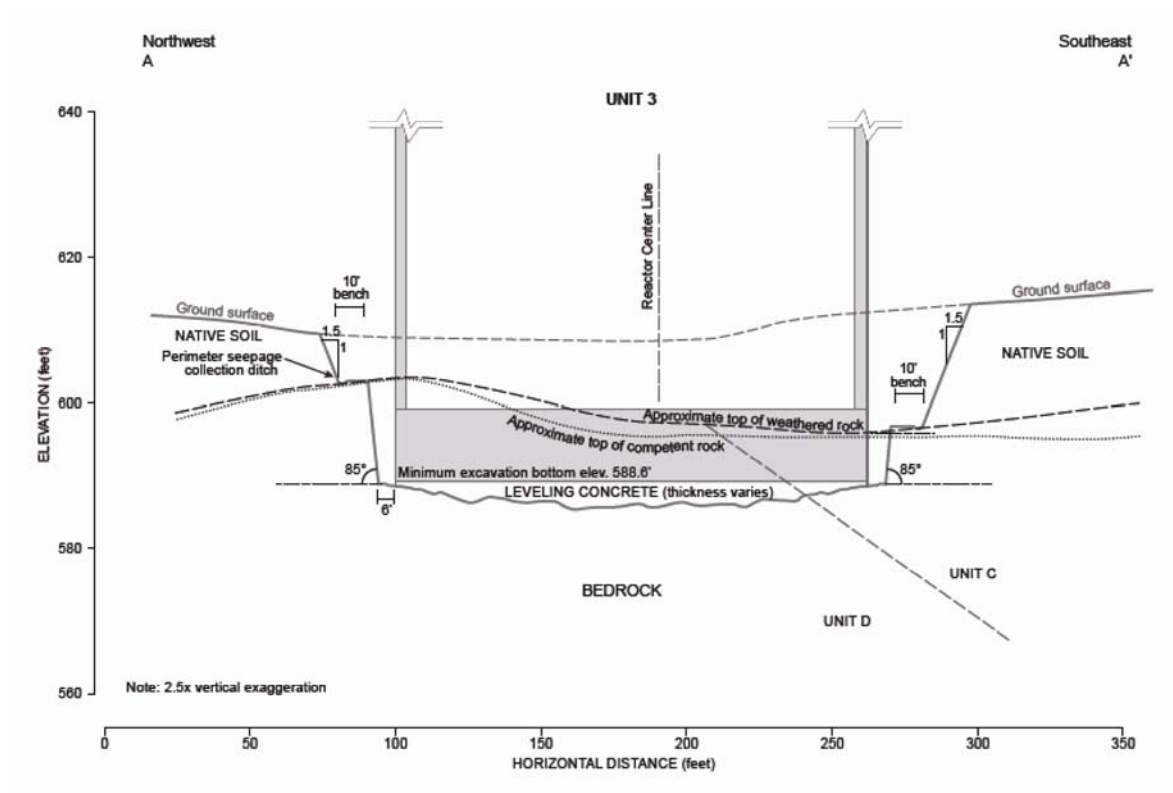


Figure 2.5.4-7a Lateral Extent of Excavation for BLN Unit 3 (FSAR Figure 2.5-348a)

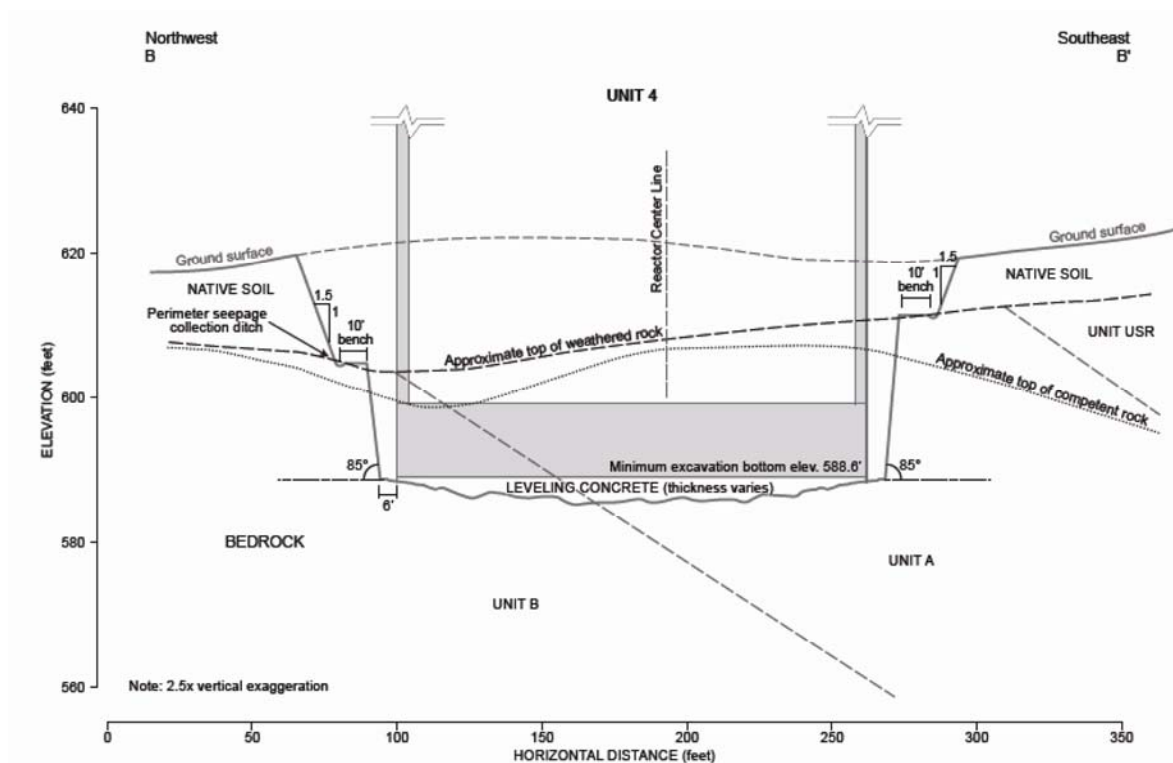


Figure 2.5.4-7b Lateral Extent of Excavation for BLN Unit 4 (FSAR Figure 2.5-348b)