



**Constellation Energy**



# CENG Project's Update for the Independent Spent Fuel Storage Installation (ISFSI)

September 15, 2009

The way energy **works.**<sup>™</sup>



**Constellation Energy**®



# The CCNPP Project Update for the Independent Spent Fuel Storage Installation (ISFSI) Project

Sept 15, 2009

The way energy **works.**™



## Current Status

---

- Calvert Cliffs Nuclear Power Plant has current Site Specific Dry Fuel Storage License
- CCNPP currently Licensed for 120 Horizontal Storage Modules (HSM's)
- CCNPP utilizes TransNuclear NUHOMS<sup>®</sup> system
- Currently 72 HSM's are installed
- Currently 63 HSM's have been loaded



## Project Summary

---

- Calvert Cliffs will be at full capacity of current Horizontal Storage Modules (HSM's) in 2011.
- Calvert Cliffs Spent Fuel Pool will lose full core off-load reserve in 2014 unless additional storage capacity is added to the existing ISFSI facility and design changes are made to the current storage system.
- Calvert Cliffs ISFSI License will expire in November 2012. Unless the license to operate the ISFSI facility is renewed by November 30th, 2012, no additional spent fuel assemblies can be placed in dry storage.



## CCNPP ISFSI Project Scope

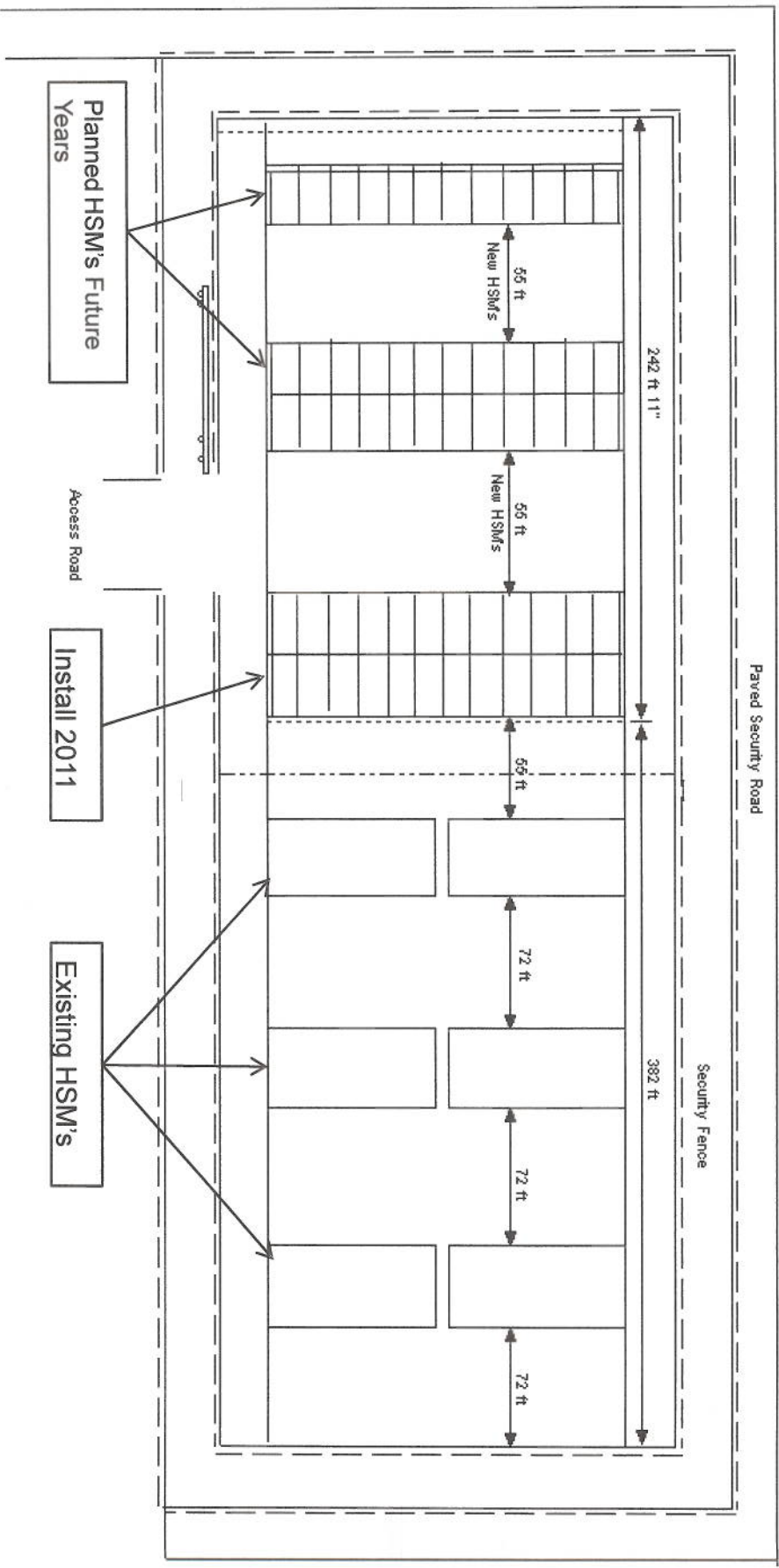
---

- Complete pad to accommodate remaining Horizontal Storage Modules
- License Amendment for 32 Pressurized Reactor High Burn-up (PHB)
- License Renewal Request
- New Transporter and Skid System (Transporter will be shared with Ginna and NMP)
- Install 24 HSM's



# Calvert Cliffs ISFSI Layout

Calvert Cliffs ISFSI





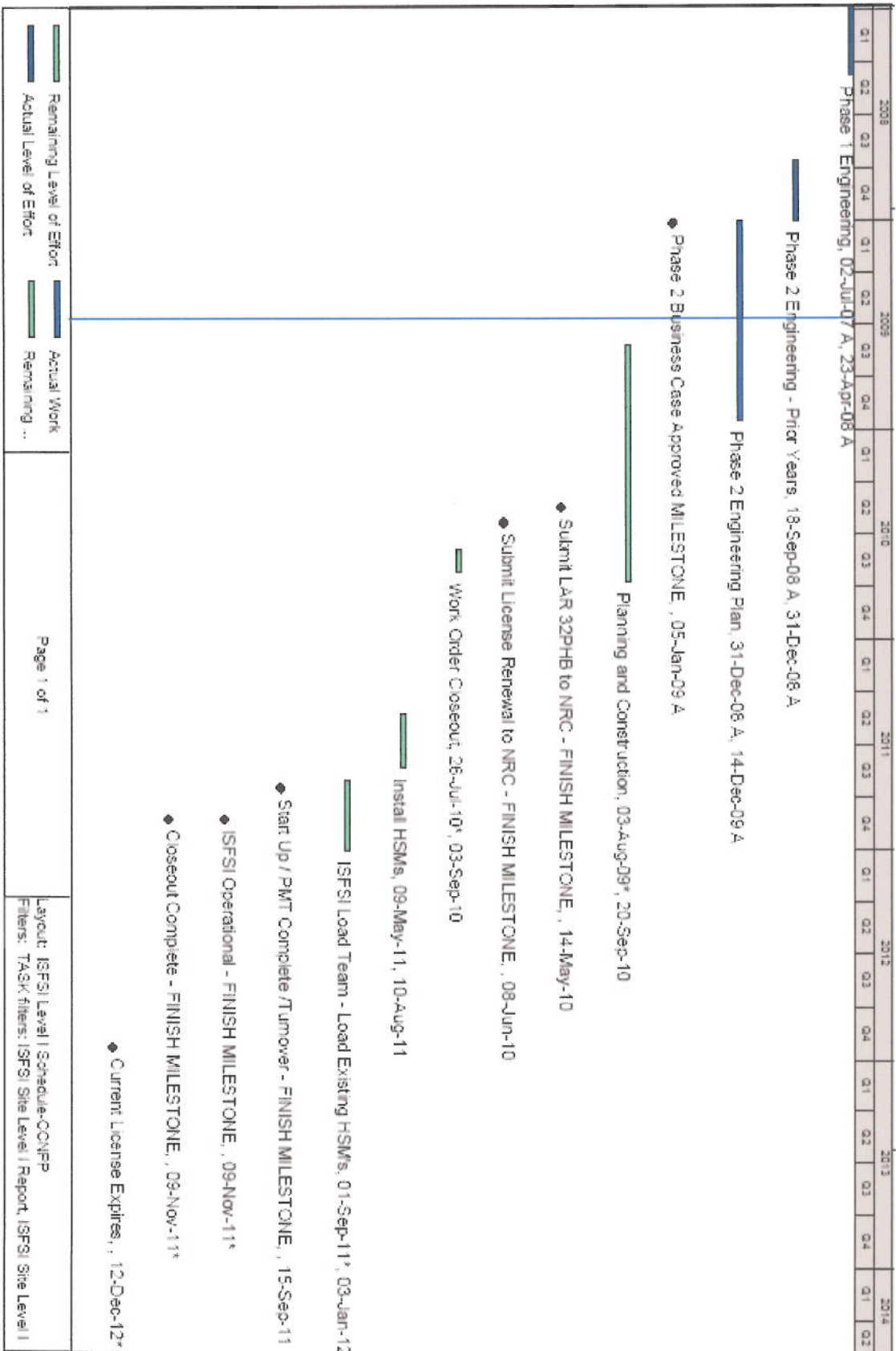
## CCNPP Major Project Milestones

---

- CCNPP Detailed Engineering Complete Winter - 2009
- Pad Construction - Spring/Summer 2010
- 32 PHB Submittal - Spring 2010
- License Renewal Request Submittal - Spring 2010
- New Skid Delivery - Summer 2010
- CCNPP HSM Installation – Summer 2011



# CCNPP Level 1 Schedule



Remaining Level of Effort

Actual Level of Effort

Actual Work

Remaining ...





Constellation Energy

The way energy **works.**™

# Questions

---

## Questions