



Figure 11. Macro photograph of Alloy 22 CT-String defect specimen CTS 13. To achieve 20 ksi√in, the fatigue precrack length is quite short ( $a/W=0.420$ ), and the crack exposed to the test environment is the thin area just above the smooth machined notch. The specimen width is 0.5 inch.

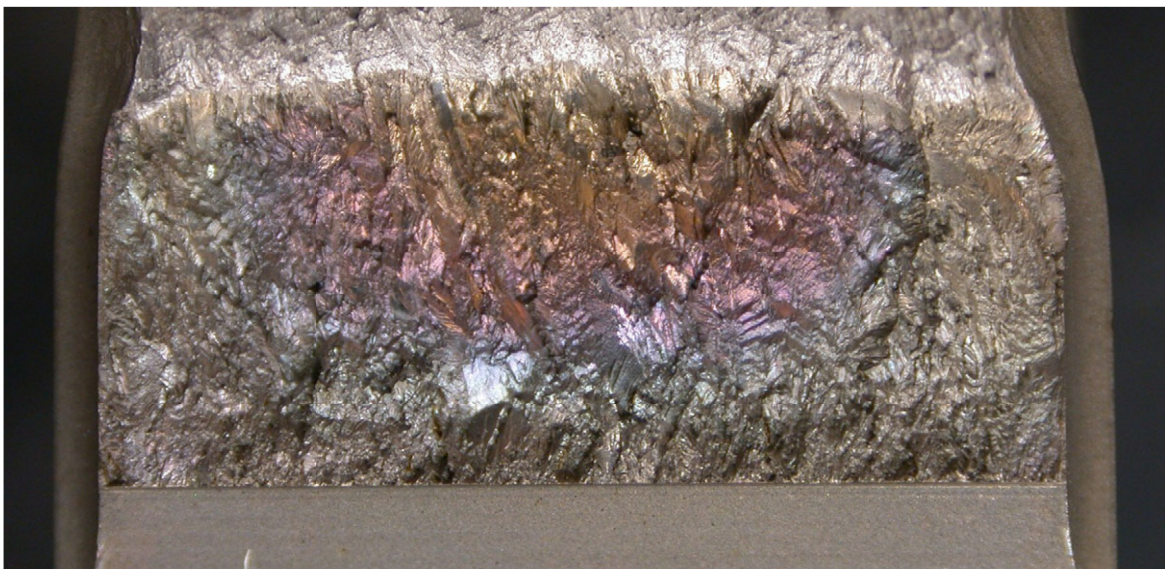


Figure 12. Macro photograph of CT-String defect specimen CTS 15. To achieve 30 ksi√in, the fatigue precrack length is quite long ( $a/W=0.554$ ), and the crack exposed to the test environment is the large tinted area just above the smooth machined notch. The specimen width is 0.5 inch.