

Figure 7. 105 °C SCC initiation response of newer Ti Grade 7 and Grade 29 specimens.



Figure 8. Corroded and fractured threads at the module/manifold interface produced unacceptably high leakage rates from the Keno autoclave. Three 316L stainless steel manifolds were ordered and manufactured to replace the 304 stainless steel manifolds damaged by corrosion during Keno Run 2, and subsequently Alloy 825 has been used.



Figure 9. Macro photograph of Alloy 22 CT-String defect specimen CTS 05. To achieve 30 ksi√in, the fatigue precrack length is quite long ( $a/W=0.554$ ), and the crack exposed to the test environment is the large tinted area just above the smooth machined notch. The specimen width is 0.5 inch.

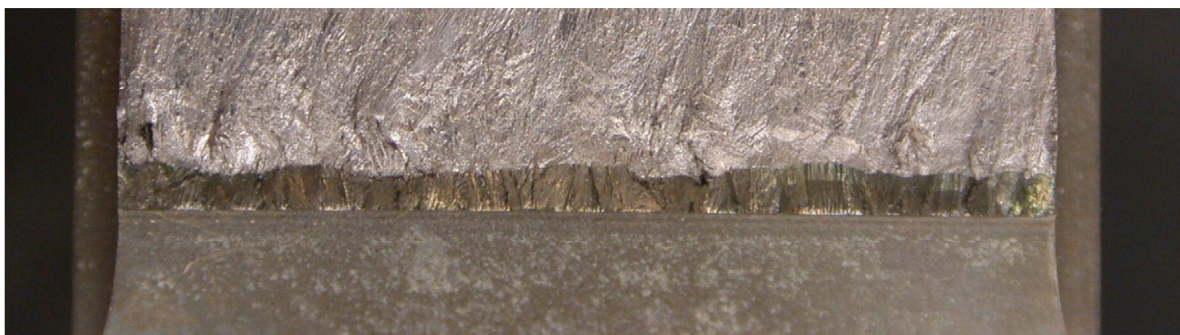


Figure 10. Macro photograph of CT-String defect specimen CTS 06. To achieve 20 ksi√in, the fatigue precrack length is quite short ( $a/W=0.420$ ), and the crack exposed to the test environment is the thin area just above the smooth machined notch. The specimen width is 0.5 inch.