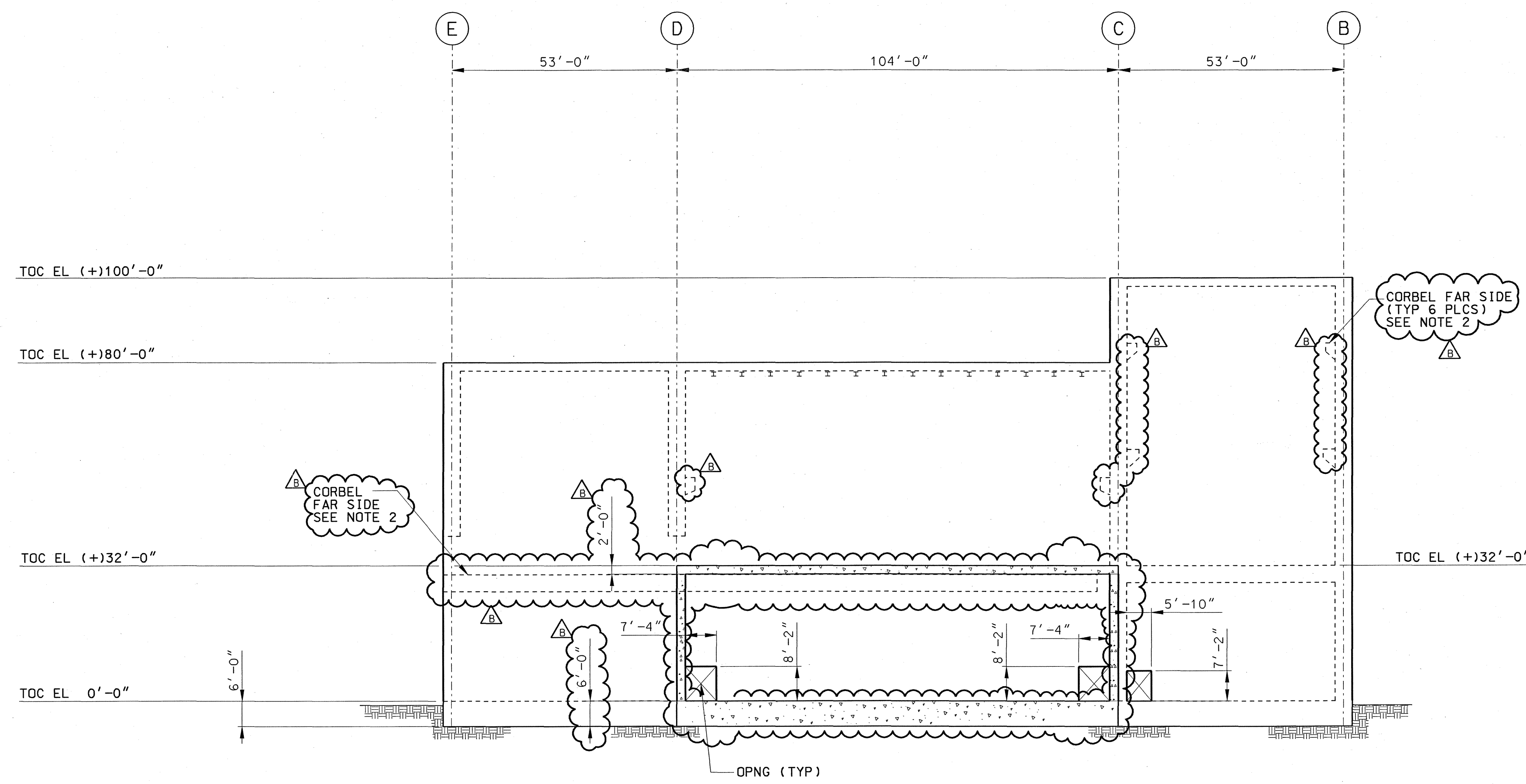


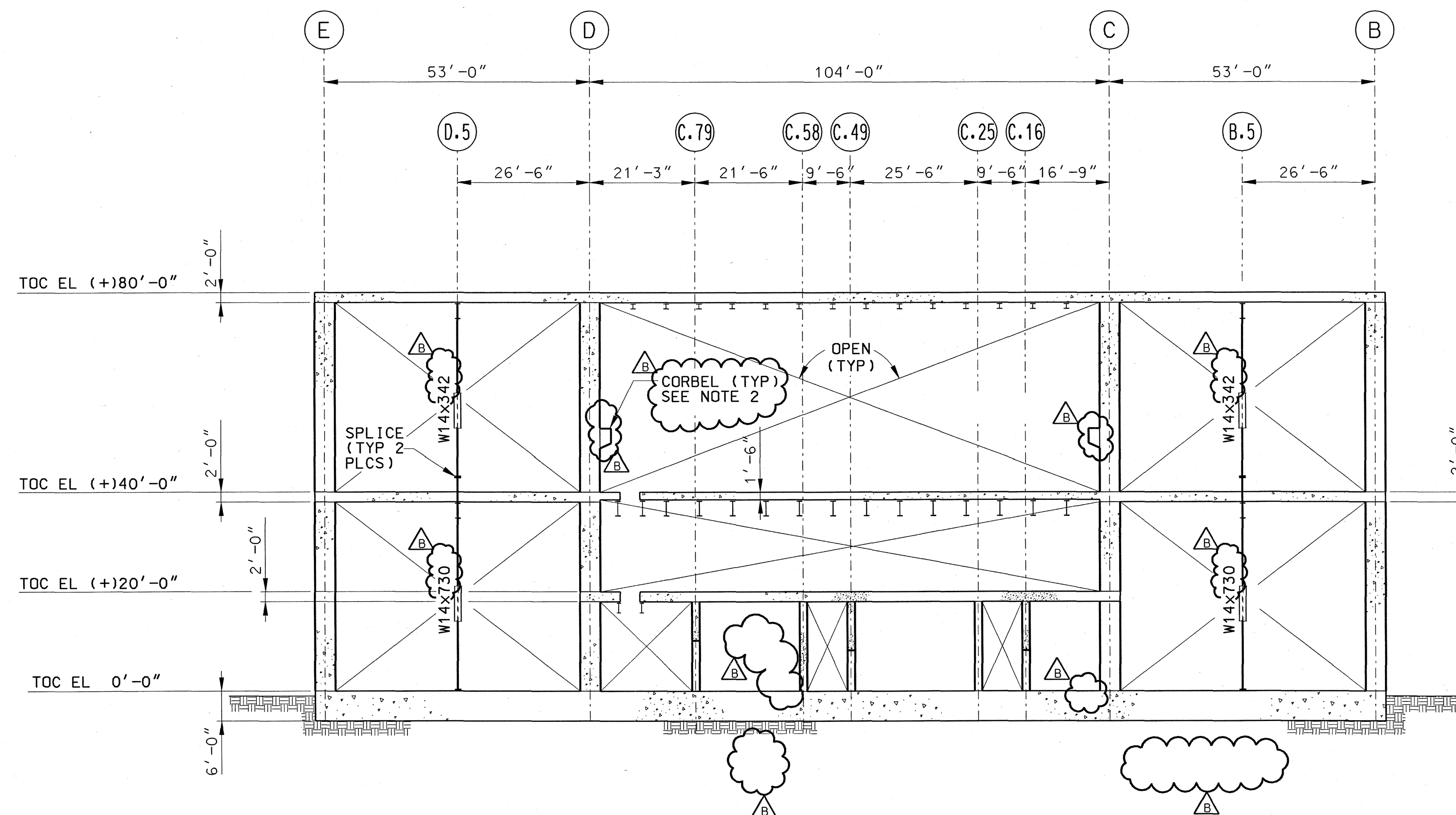
NOTES:

- 1. FOR NOTES AND REFERENCE DRAWINGS. SEE DWG 050-DB0-WH00-00102-000.
- 2. CONCRETE CORBEL HAS BEEN SHOWN FOR ILLUSTRATIVE PURPOSES ONLY.



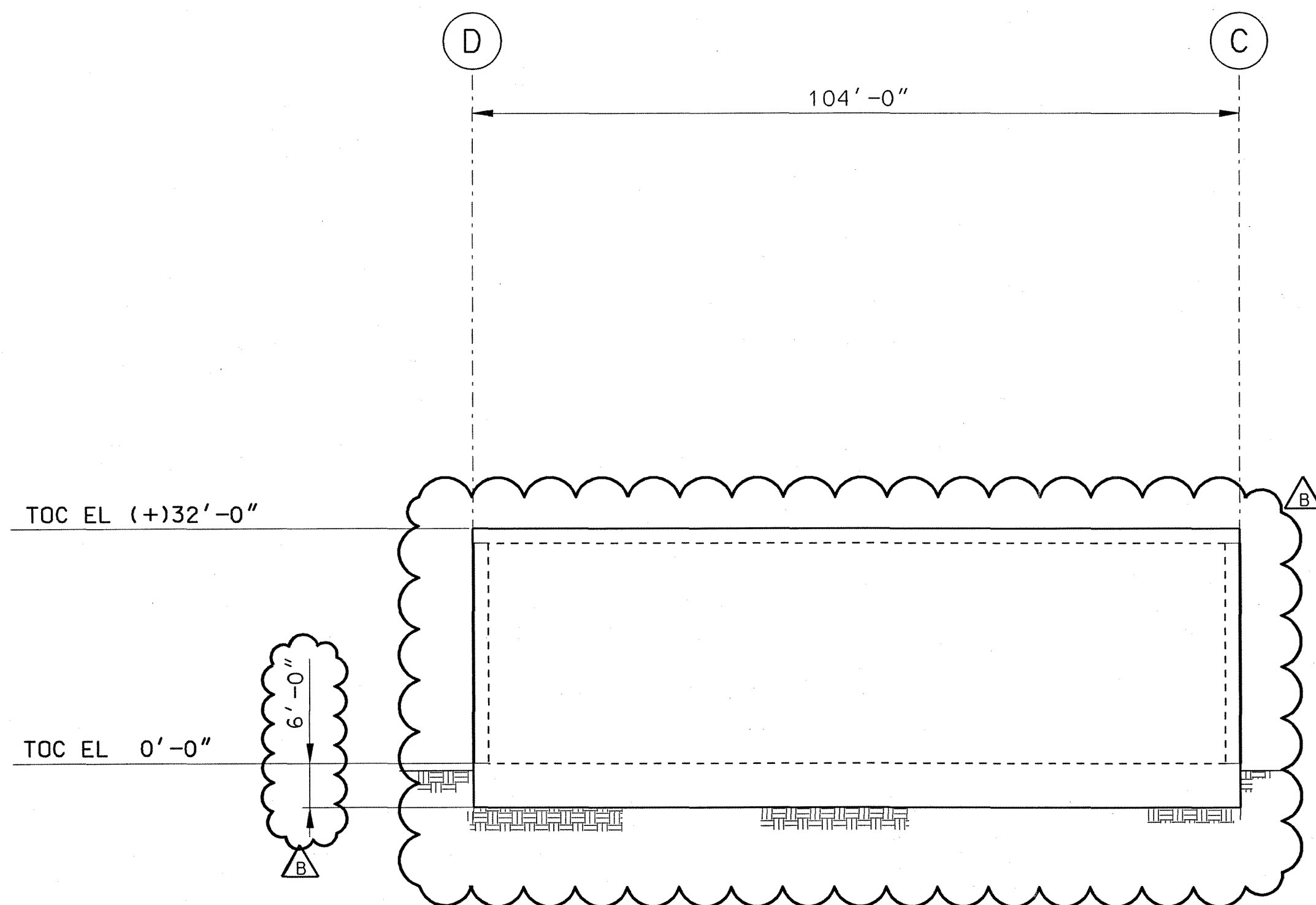
ELEVATION ALONG COLUMN "8"
(LOOKING WEST)

SECTION **A**
 DB0-WH00-00102, 00103, 00104, 00105
 SSO-WH00-00101, 00102, 00103



ELEVATION ALONG COLUMN "2.5"
(LOOKING WEST)

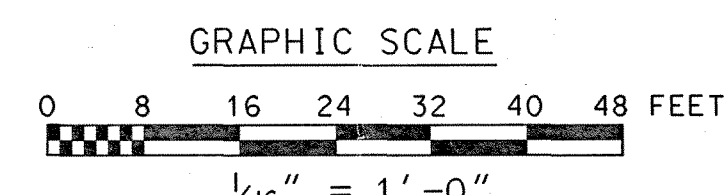
SECTION **C**
 DB0-WH00-00102, 00103, 00104, 00105
 SSO-WH00-00101, 00102, 00103



ELEVATION ALONG COLUMN "9"
(LOOKING WEST)

SECTION **B**
 DB0-WH00-00102, 00103, 00104
 SSO-WH00-00101, 00102

THIS DRAWING IS PRELIMINARY AND NOT INTENDED FOR CONSTRUCTION, PROCUREMENT OR FABRICATION.



REV	DESCRIPTION	DATE	DRG	CHK	ESS	PK	DES	N/A	NH	DE
B	DELETED COVERED TRENCHES. RELEASED HOLD & ADDED NOTE 2	4/2/2008	TD	RF	RF	RF	RF	N/A	N/A	7/7
A	ISSUED FOR LA	7/30/07	TD	MSR	TF	DT	N/A	N/A	NH	

APPROVALS	INITIALS/DATE
OFFICER IN CHARGE	TD 7/30/07
FOUNDER	MSR 7/30/07
ENGINEERING GROUP SUPERVISOR	TF 7/30/07
PROJECT ENGINEER	DT 7/30/07
DEVELOPING ENGINEERING MANAGER	N/A
N/A	N/A
DE CONFORMANCE	NH 7/30/07

REVISION HISTORY	
U.S. DEPARTMENT OF ENERGY Office of Civilian Radioactive Waste Management BECHTEL SAIC Management and Operation of the Office of Civilian Radioactive Waste Management Program	
NUCLEAR FACILITIES BUILDINGS WET HANDLING FACILITY ELEV AT COL LINES 8, 9 & 2.5	
SAFETY CLASSIFICATION ITS	DOCUMENT IDENTIFIER 050-DB0-WH00-00109-000
SCALE 1/16" = 1'-0"	SCALE FILENAME 050db0wh0000109.dgn
CASE CODE: N/A	REV 00B