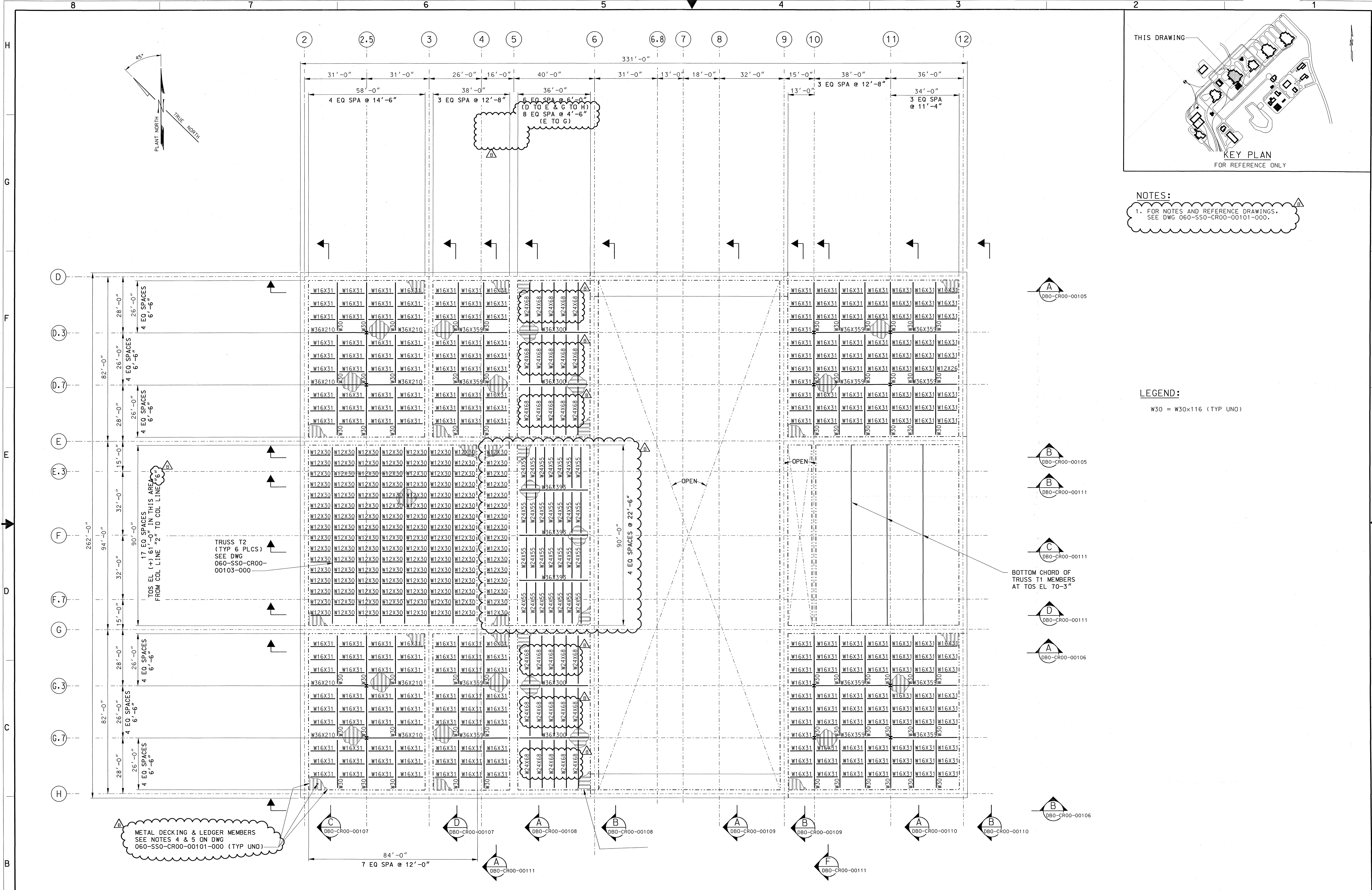


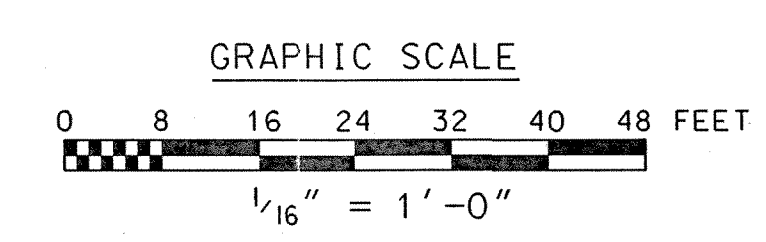
NOTES:  
1. FOR NOTES AND REFERENCE DRAWINGS, SEE DWG 060-SS0-CR00-00101-000.

LEGEND:  
W30 = W30x116 (TYP UNO)



ROOF FRAMING PLAN AT TOS EL (+)62'-3" TYP UNO  
CONC ROOF SLAB AT TOS EL (+)64'-0" TYP UNO

THIS DRAWING IS PRELIMINARY AND NOT INTENDED FOR CONSTRUCTION, PROCUREMENT OR FABRICATION.



| REV | DESCRIPTION   | DATE     | DRG | CHK | EGS | PL | DN  | N/A | N/A | PB | OK |
|-----|---|----------|-----|-----|-----|----|-----|-----|-----|----|----|
| B   | REMOVED HOLD. HOLD NOTE. REVISED BEAM SIZES, LOCATIONS, SPACING AND NOTE 1. REISSUED FOR LA | 11/10/08 |     |     |     |    |     |     |     |    |    |
| A   | ISSUED FOR LA   | 6/29/07  | LV  | MAD | TF  | DN | N/A | N/A | N/A |    |    |

| APPROVALS                      |               | INITIALS | DATE    |
|--------------------------------|---------------|----------|---------|
| DESIGNER                       | L. VILLANUEVA | LV       | 6/27/07 |
| CHECKER                        | M. DENLINGER  | MAD      | 6/27/07 |
| ENGINEERING GROUP SUPERVISOR   | T. FRANKERT   | TF       | 6/27/07 |
| PROJECT ENGINEER               | D. NEVERGOLD  | DN       | 6/29/07 |
| STRUCTURAL ENGINEERING MANAGER | N/A           | N/A      | N/A     |

| REVISION HISTORY |               |
|------------------|---------------|
| DATE             | DESCRIPTION   |
| 6/29/07          | ISSUED FOR LA |

| U.S. DEPARTMENT OF ENERGY   |                        |
|---|------------------------|
| Office of Civilian Radioactive Waste Management   |                        |
| BECHTEL Management and Operation of the Office of Civilian Radioactive Waste Management Program |                        |
| NUCLEAR FACILITIES BUILDINGS  |                        |
| CANISTER RECEIPT  |                        |
| AND CLOSURE FACILITY #1   |                        |
| FRAMING PLAN AT TOS EL 62'-3"   |                        |
| SAFETY CLASSIFICATION   | 060-SS0-CR00-00102-000 |
| SCALE   | 1/16" = 1'-0"          |
| DATE  | 6/28/07                |
| SCALE   | 1/16" = 1'-0"          |
| DATE  | 6/28/07                |