

Figure 20. Boring B-323, Deviation Projection (dimensions in feet)

**CCNPP COLA Borehole B-401 velocity data  
Receiver to Receiver  $V_s$  and  $V_p$  Analysis**

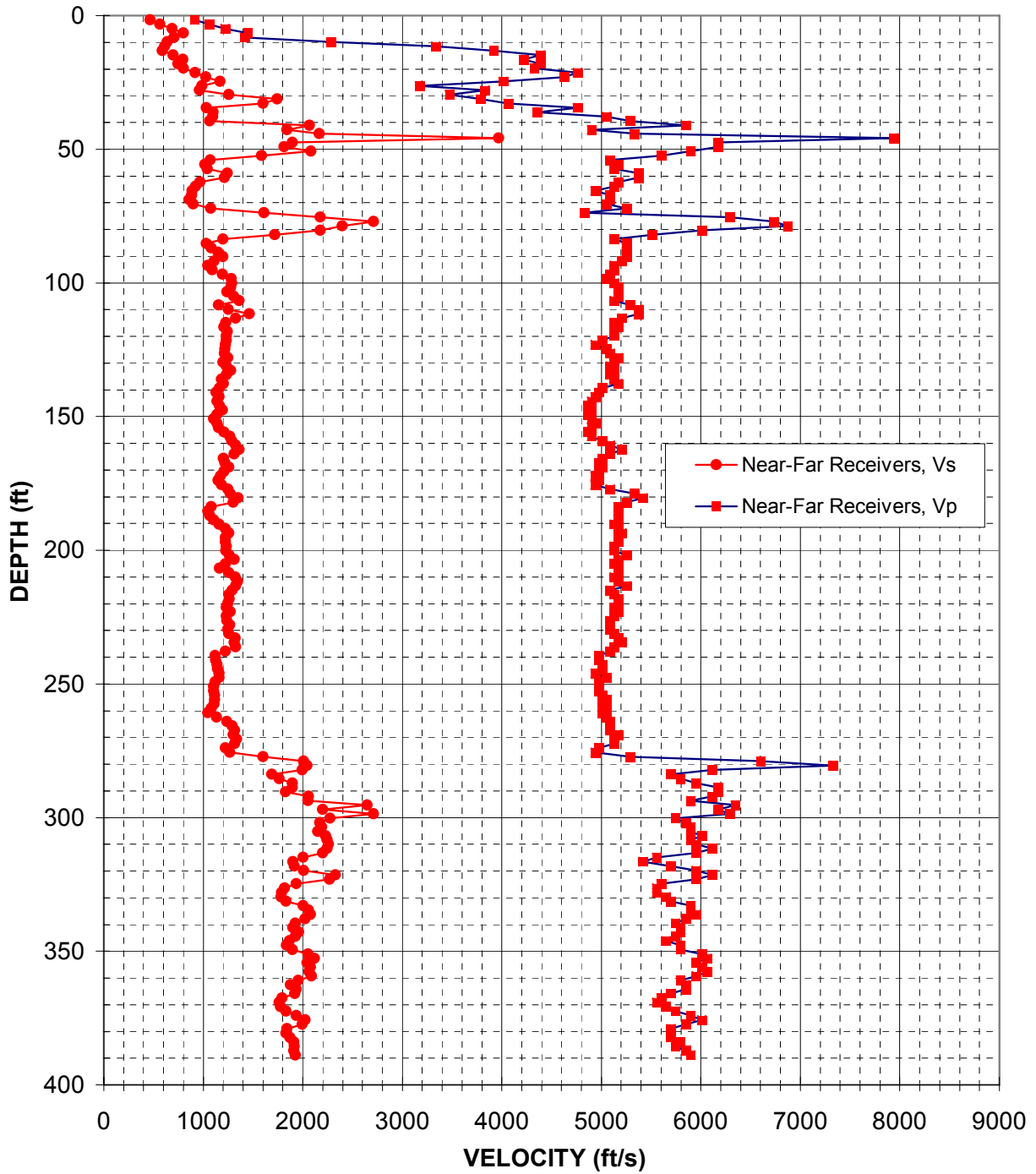


Figure 21: Boring B-401, Suspension R1-R2 P- and  $S_H$ -wave velocities

Depth (feet)	V <sub>s</sub> (feet/sec)	V <sub>p</sub> (feet/sec)	Depth (feet)	V <sub>s</sub> (feet/sec)	V <sub>p</sub> (feet/sec)	Depth (feet)	V <sub>s</sub> (feet/sec)	V <sub>p</sub> (feet/sec)
1.6	470	920	83.7	1200	5130	165.7	1200	5010
3.3	560	1060	85.3	1030	5250	167.3	1220	4980
4.9	690	1220	86.9	1080	5250	169.0	1260	5010
6.6	800	1450	88.6	1150	5250	170.6	1210	4980
8.2	710	1410	90.2	1200	5250	172.2	1170	4940
9.8	640	2280	91.9	1110	5210	173.9	1150	4980
11.5	620	3330	93.5	1050	5130	175.5	1180	4940
13.1	590	3920	95.1	1090	5130	177.2	1250	5090
14.8	700	4390	96.8	1190	5090	178.8	1270	5330
16.4	800	4220	98.4	1280	5050	180.5	1350	5420
18.0	750	4390	100.1	1290	5130	182.1	1300	5250
19.7	800	4330	101.7	1280	5170	183.7	1080	5170
21.3	920	4760	103.4	1240	5170	185.4	1050	5170
23.0	1030	4630	105.0	1310	5170	187.0	1070	5170
24.6	1170	4020	106.6	1360	5130	188.7	1100	5170
26.3	990	3170	108.3	1150	5290	190.3	1160	5130
27.9	960	3830	109.9	1250	5380	191.9	1220	5170
29.5	1260	3470	111.6	1460	5380	193.6	1260	5210
31.2	1750	3790	113.2	1330	5210	195.2	1220	5170
32.8	1600	4070	114.8	1230	5130	196.9	1230	5170
34.5	1030	4760	116.5	1210	5170	198.5	1230	5130
36.1	1100	4360	118.1	1240	5130	200.1	1230	5130
37.7	1100	5050	119.8	1230	5130	201.8	1260	5250
39.4	1060	5290	121.4	1230	5010	203.4	1310	5170
41.0	2070	5850	123.0	1220	4940	205.1	1220	5130
42.7	1840	4900	124.7	1220	5050	206.7	1170	5170
44.3	2160	5330	126.3	1210	5090	208.3	1260	5170
45.9	3970	7940	128.0	1250	5170	210.0	1320	5130
47.6	1890	6170	129.6	1200	5130	211.6	1340	5170
49.2	1810	6170	131.2	1230	5090	213.3	1330	5250
50.9	2080	5900	132.9	1280	5130	214.9	1290	5090
52.5	1590	5600	134.5	1230	5090	216.5	1260	5130
54.1	1070	5090	136.2	1190	5130	218.2	1260	5170
55.8	1020	5170	137.8	1200	5170	219.8	1250	5170
57.4	1040	5130	139.4	1170	5010	221.5	1230	5130
59.1	1240	5380	141.1	1130	4980	223.1	1270	5170
60.7	1210	5380	142.7	1160	4940	224.7	1230	5130
62.3	970	5170	144.4	1140	4900	226.4	1240	5090
64.0	930	5130	146.0	1170	4870	228.0	1270	5090
65.6	890	4940	147.6	1190	4900	229.7	1250	5090
67.3	880	5090	149.3	1140	4870	231.3	1260	5130
68.9	860	5090	150.9	1110	4900	232.9	1320	5170
70.5	900	5050	152.6	1140	4940	234.6	1310	5210
72.2	1080	5250	154.2	1150	4900	236.2	1330	5130
73.8	1610	4830	155.8	1210	4870	237.9	1220	5090
75.5	2180	6290	157.5	1270	4900	239.5	1120	4980
77.1	2710	6730	159.1	1290	5010	241.1	1130	4980
78.7	2400	6870	160.8	1330	5090	242.8	1140	5010
80.4	2180	6010	162.4	1360	5210	244.4	1150	5010
82.0	1720	5510	164.0	1310	5090	246.1	1160	4940

Table 12. Boring B-401, Suspension R1-R2 depths and P- and S<sub>H</sub>-wave velocities

Depth (feet)	V <sub>s</sub> (feet/sec)	V <sub>p</sub> (feet/sec)	Depth (feet)	V <sub>s</sub> (feet/sec)	V <sub>p</sub> (feet/sec)
247.7	1160	5050	329.7	1780	5650
249.3	1120	4980	331.4	1830	5700
251.0	1100	4980	333.0	2000	5900
252.6	1100	4980	334.7	2060	5900
254.3	1110	5010	336.3	2080	5950
255.9	1110	5050	337.9	2030	5850
257.6	1110	5010	339.6	1930	5750
259.2	1080	5050	341.2	1900	5800
260.8	1050	5010	342.9	1960	5800
262.5	1130	5050	344.5	1930	5750
264.1	1240	5090	346.1	1870	5650
265.8	1290	5090	347.8	1840	5800
267.4	1320	5090	349.4	1890	5800
269.0	1300	5170	351.1	2050	6010
270.7	1340	5130	352.7	2120	6060
272.3	1320	5130	354.3	2040	5950
274.0	1220	4980	356.0	2080	6010
275.6	1270	4940	357.6	2060	6060
277.2	1600	5290	359.3	2090	5950
278.9	2010	6600	360.9	1960	5800
280.5	2040	7330	362.5	1880	5850
282.2	2000	6120	364.2	1940	5850
283.8	1690	5700	365.8	1920	5700
285.4	1760	5800	367.5	1790	5600
287.1	1890	5950	369.1	1760	5560
288.7	1890	6170	370.7	1780	5650
290.4	1830	6170	372.4	1830	5750
292.0	2060	6120	374.0	1940	5900
293.6	2050	5900	375.7	2030	6010
295.3	2650	6350	377.3	2000	5850
296.9	2200	6170	378.9	1840	5700
298.6	2710	6290	380.6	1830	5700
300.2	2280	5750	382.2	1870	5700
301.8	2170	5850	383.9	1910	5800
303.5	2190	5900	385.5	1920	5750
305.1	2150	5900	387.1	1910	5850
306.8	2230	6010	388.8	1930	5900
308.4	2240	5900			
310.0	2260	5950			
311.7	2240	6120			
313.3	2200	5950			
315.0	2000	5560			
316.6	1900	5420			
318.2	1920	5700			
319.9	2010	5950			
321.5	2330	6120			
323.2	2270	5950			
324.8	1940	5600			
326.4	1820	5560			
328.1	1790	5560			

Table 13, continued. Boring B-401, Suspension R1-R2 depths and P- and S<sub>H</sub>-wave velocities



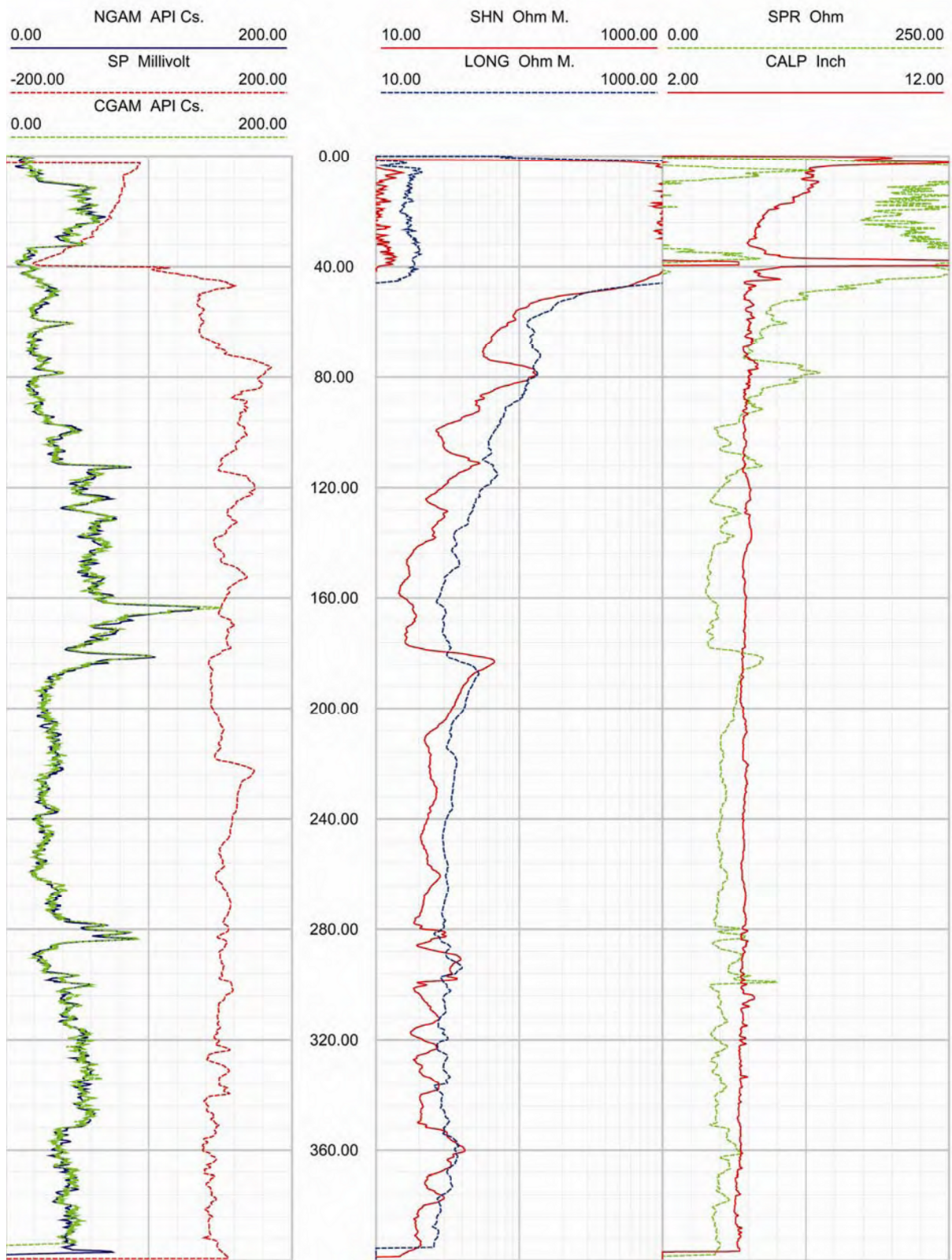


Figure 22. Boring B-401, Caliper, Natural gamma, Resistivity and SP logs

Deviated borehole in orthographic projection, viewed from N45

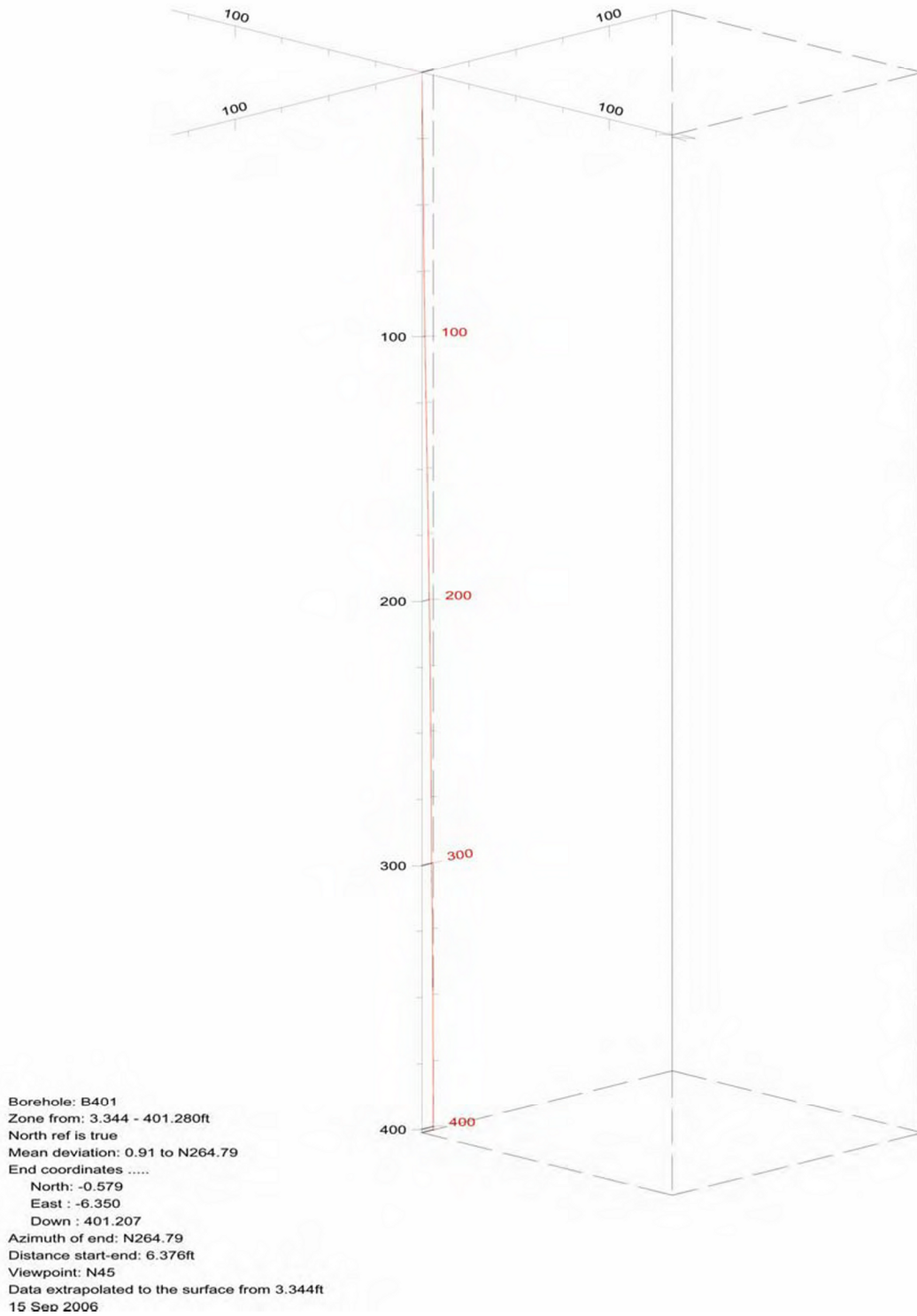


Figure 23. Boring B-401, Deviation Projection (dimensions in feet)

**CCNPP COLA Borehole B-404 velocity data  
Receiver to Receiver  $V_s$  and  $V_p$  Analysis**

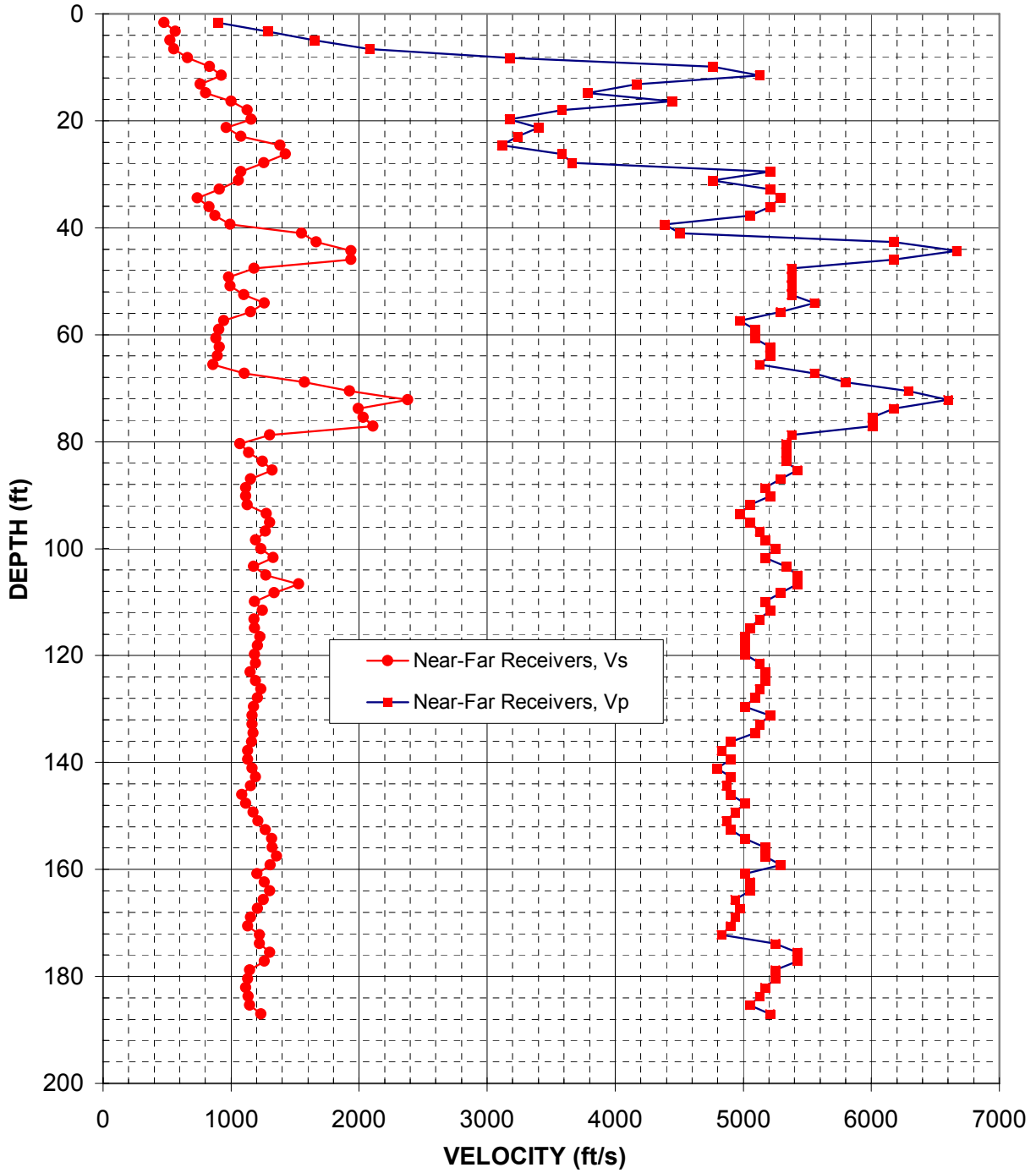


Figure 24: Boring B-404, Suspension R1-R2 P- and  $S_H$ -wave velocities

Depth (feet)	V <sub>s</sub> (feet/sec)	V <sub>p</sub> (feet/sec)
1.6	480	900
3.3	560	1280
4.9	520	1650
6.6	560	2080
8.2	660	3170
9.8	830	4760
11.5	930	5130
13.1	760	4170
14.8	800	3790
16.4	1000	4440
18.0	1130	3580
19.7	1160	3170
21.3	960	3400
23.0	1080	3240
24.6	1380	3120
26.3	1420	3580
27.9	1260	3660
29.5	1080	5210
31.2	1060	4760
32.8	910	5210
34.5	740	5290
36.1	830	5210
37.7	870	5050
39.4	1000	4390
41.0	1550	4500
42.7	1670	6170
44.3	1940	6670
45.9	1940	6170
47.6	1180	5380
49.2	980	5380
50.9	1000	5380
52.5	1100	5380
54.1	1260	5560
55.8	1150	5290
57.4	940	4980
59.1	910	5090
60.7	880	5090
62.3	910	5210
64.0	890	5210
65.6	860	5130
67.3	1100	5560
68.9	1570	5800
70.5	1930	6290
72.2	2380	6600
73.8	2000	6170
75.5	2030	6010
77.1	2110	6010
78.7	1300	5380
80.4	1070	5330
82.0	1140	5330

Depth (feet)	V <sub>s</sub> (feet/sec)	V <sub>p</sub> (feet/sec)
83.7	1240	5330
85.3	1320	5420
86.9	1150	5290
88.6	1110	5170
90.2	1110	5210
91.9	1130	5050
93.5	1280	4980
95.1	1300	5050
96.8	1270	5130
98.4	1190	5170
100.1	1230	5250
101.7	1330	5170
103.4	1180	5330
105.0	1270	5420
106.6	1530	5420
108.3	1340	5290
109.9	1190	5170
111.6	1240	5210
113.2	1180	5130
114.8	1190	5050
116.5	1230	5010
118.1	1210	5010
119.8	1190	5010
121.4	1190	5130
123.0	1150	5170
124.7	1190	5170
126.3	1230	5130
128.0	1210	5090
129.6	1180	5010
131.2	1170	5210
132.9	1170	5130
134.5	1170	5090
136.2	1160	4900
137.8	1130	4830
139.4	1130	4900
141.1	1170	4800
142.7	1190	4900
144.4	1150	4870
146.0	1090	4900
147.6	1110	5010
149.3	1170	4940
150.9	1210	4870
152.6	1270	4900
154.2	1320	5010
155.8	1320	5170
157.5	1360	5170
159.1	1310	5290
160.8	1200	5010
162.4	1260	5050
164.0	1300	5050

Depth (feet)	V <sub>s</sub> (feet/sec)	V <sub>p</sub> (feet/sec)
165.7	1250	4940
167.3	1210	4980
169.0	1150	4940
170.6	1130	4900
172.2	1220	4830
173.9	1220	5250
175.5	1300	5420
177.2	1260	5420
178.8	1150	5250
180.5	1130	5250
182.1	1110	5170
183.7	1130	5130
185.4	1150	5050
187.0	1230	5210

Table 14. Boring B-404, Suspension R1-R2 depths and P- and S<sub>H</sub>-wave velocities



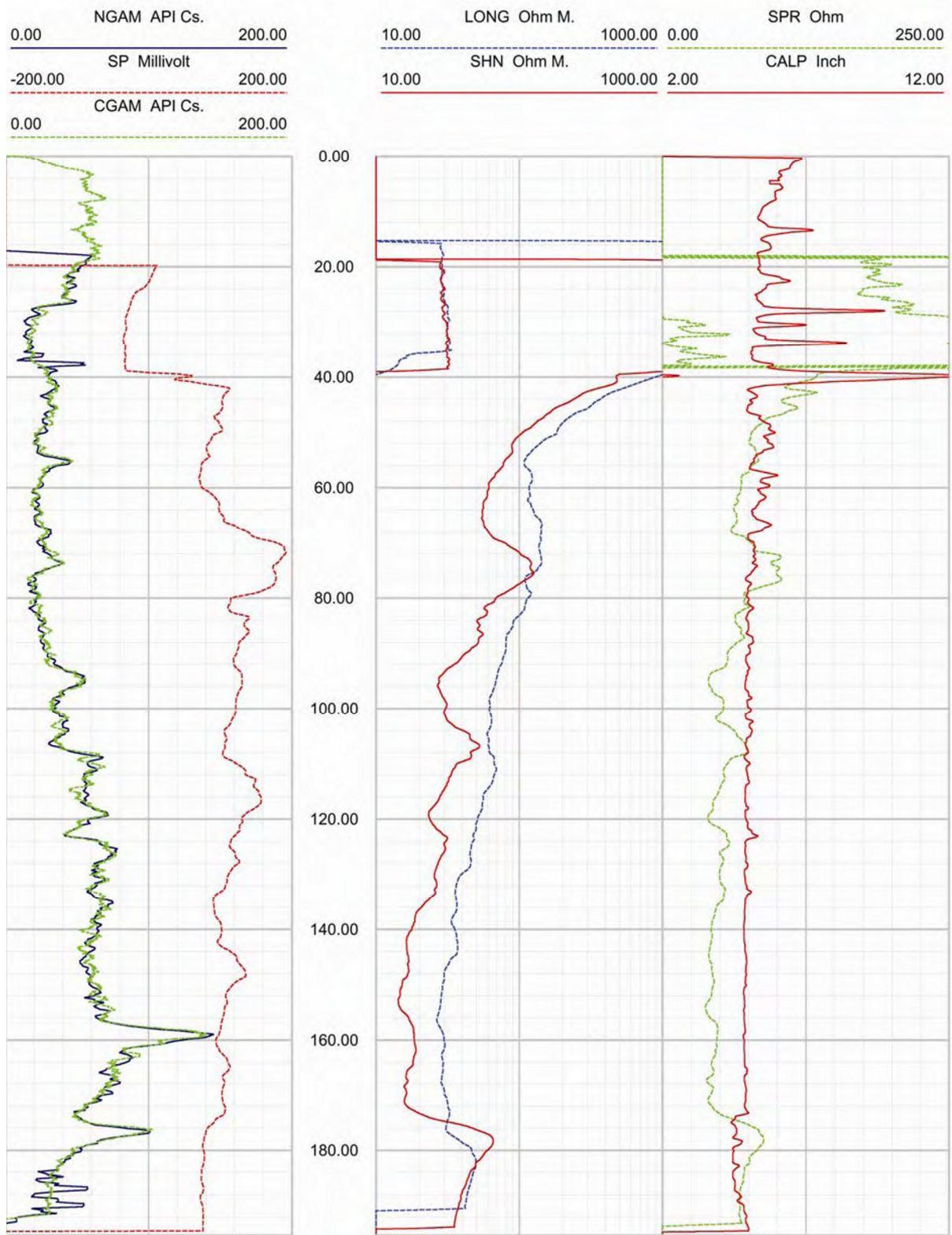


Figure 25. Boring B-404, Caliper, Natural gamma, Resistivity and SP logs

Deviated borehole in orthographic projection, viewed from N45

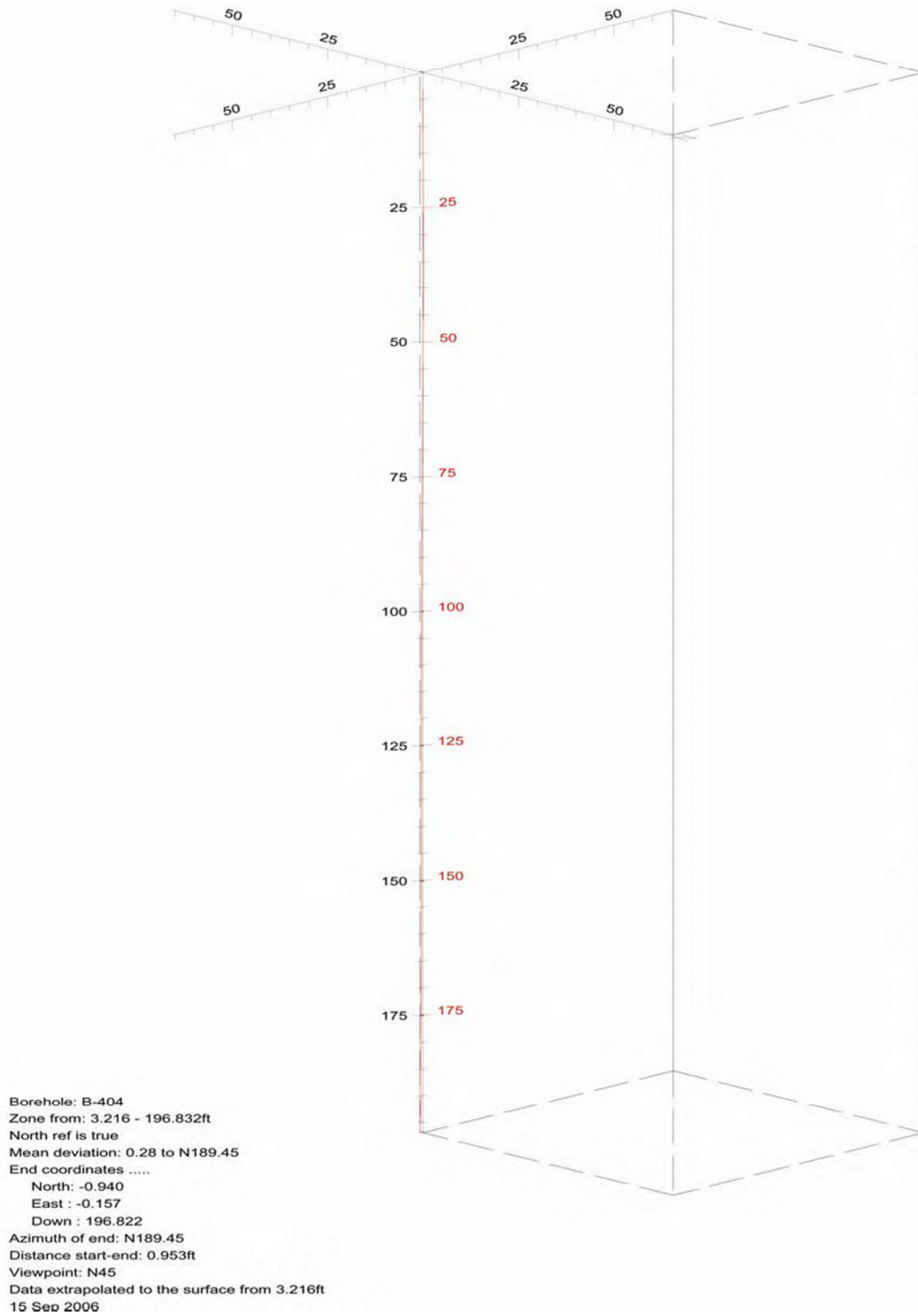


Figure 26. Boring B-404, Deviation Projection (dimensions in feet)

**CCNPP COLA Borehole B-407 velocity data  
Receiver to Receiver  $V_s$  and  $V_p$  Analysis**

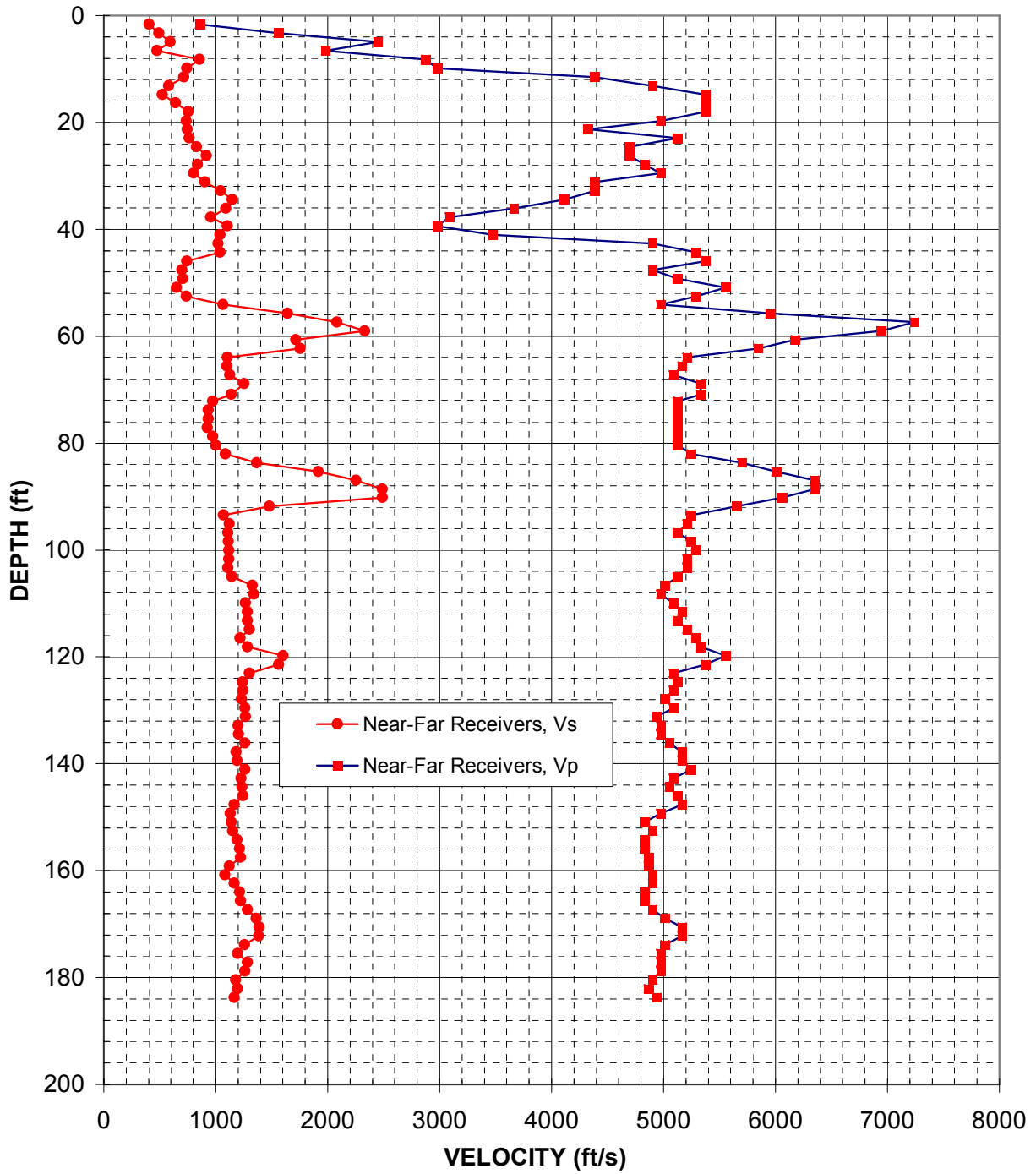


Figure 27: Boring B-407, Suspension R1-R2 P- and  $S_H$ -wave velocities

Depth (feet)	V <sub>s</sub> (feet/sec)	V <sub>p</sub> (feet/sec)
1.6	400	850
3.3	490	1560
4.9	600	2450
6.6	480	1980
8.2	850	2870
9.8	740	2980
11.5	720	4390
13.1	580	4900
14.8	520	5380
16.4	640	5380
18.0	750	5380
19.7	740	4980
21.3	750	4330
23.0	770	5130
24.6	830	4690
26.3	920	4690
27.9	840	4830
29.5	800	4980
31.2	900	4390
32.8	1040	4390
34.5	1150	4120
36.1	1090	3660
37.7	960	3090
39.4	1100	2980
41.0	1040	3470
42.7	1020	4900
44.3	1040	5290
45.9	740	5380
47.6	700	4900
49.2	710	5130
50.9	650	5560
52.5	740	5290
54.1	1060	4980
55.8	1640	5950
57.4	2080	7250
59.1	2330	6940
60.7	1720	6170
62.3	1750	5850
64.0	1100	5210
65.6	1100	5170
67.3	1130	5090
68.9	1250	5330
70.9	1140	5330
72.2	970	5130
73.8	940	5130
75.5	930	5130
77.1	930	5130
78.7	970	5130
80.4	1000	5130
82.0	1090	5250

Depth (feet)	V <sub>s</sub> (feet/sec)	V <sub>p</sub> (feet/sec)
83.7	1370	5700
85.3	1920	6010
86.9	2250	6350
88.6	2490	6350
90.2	2490	6060
91.9	1480	5650
93.5	1070	5250
95.1	1120	5210
96.8	1110	5130
98.4	1110	5250
100.1	1120	5290
101.7	1120	5210
103.4	1110	5210
105.0	1150	5130
106.6	1330	5010
108.3	1340	4980
109.9	1270	5090
111.6	1280	5170
113.2	1280	5130
114.8	1300	5210
116.5	1220	5290
118.1	1280	5330
119.8	1600	5560
121.4	1560	5380
123.0	1300	5090
124.7	1240	5130
126.3	1240	5090
128.0	1230	5010
129.6	1260	5090
131.2	1270	4940
132.9	1200	4980
134.5	1200	4980
136.2	1260	5050
137.8	1180	5170
139.4	1190	5170
141.1	1260	5250
142.7	1230	5090
144.4	1230	5050
146.0	1240	5130
147.6	1170	5170
149.3	1130	4980
150.9	1140	4830
152.6	1150	4900
154.2	1190	4830
155.8	1210	4830
157.5	1220	4870
159.1	1120	4870
160.8	1080	4900
162.4	1170	4900
164.0	1210	4830

Depth (feet)	V <sub>s</sub> (feet/sec)	V <sub>p</sub> (feet/sec)
165.7	1220	4830
167.3	1280	4900
169.0	1360	5010
170.6	1390	5170
172.2	1380	5170
173.9	1260	5010
175.5	1190	4980
177.2	1280	4980
178.8	1260	4980
180.5	1180	4900
182.1	1190	4870
183.7	1170	4940

Table 15. Boring B-407, Suspension R1-R2 depths and P- and S<sub>H</sub>-wave velocities



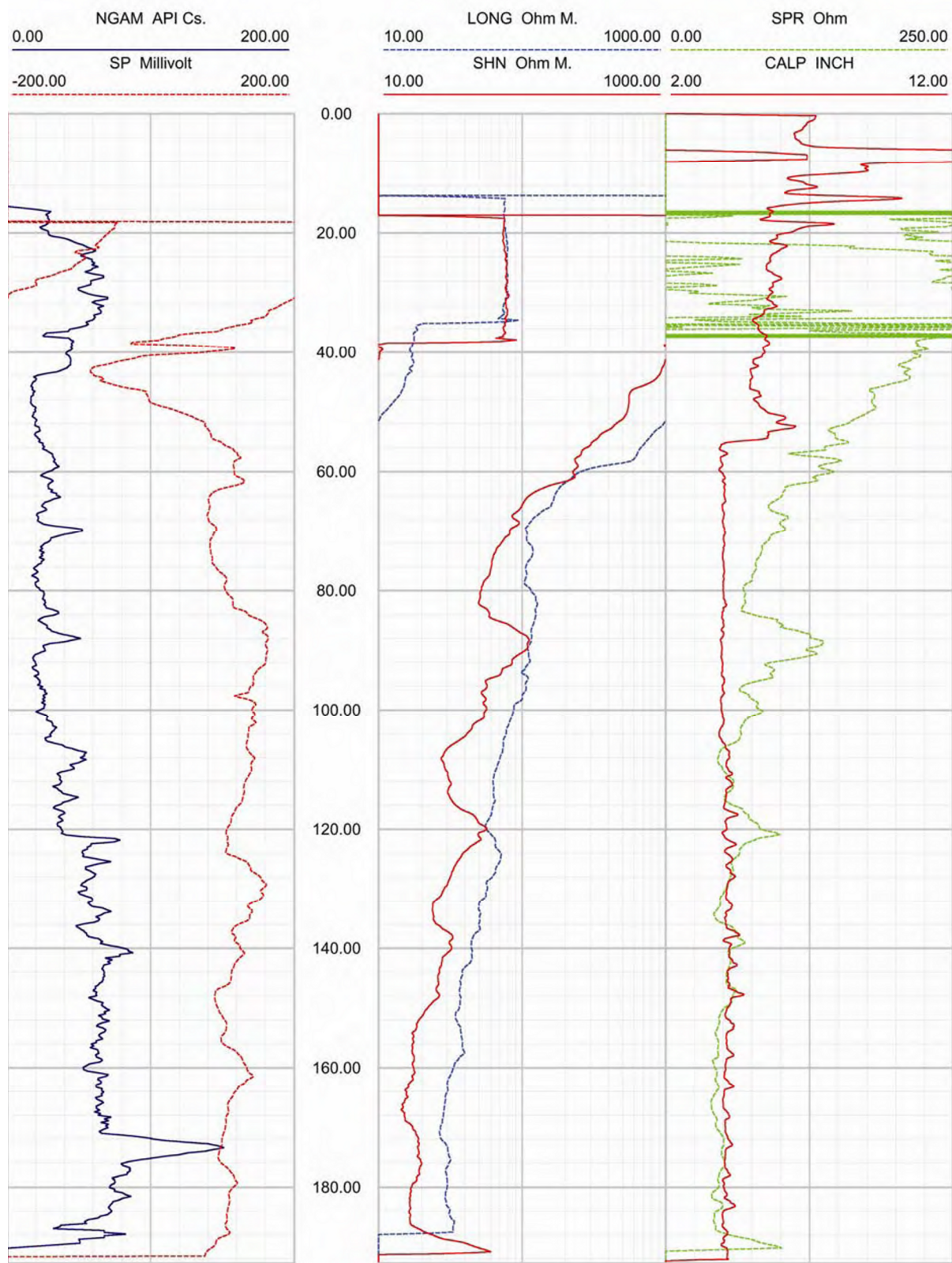


Figure 28. Boring B-407, Caliper, Natural gamma, Resistivity and SP logs