

Deviated borehole in orthographic projection, viewed from N45

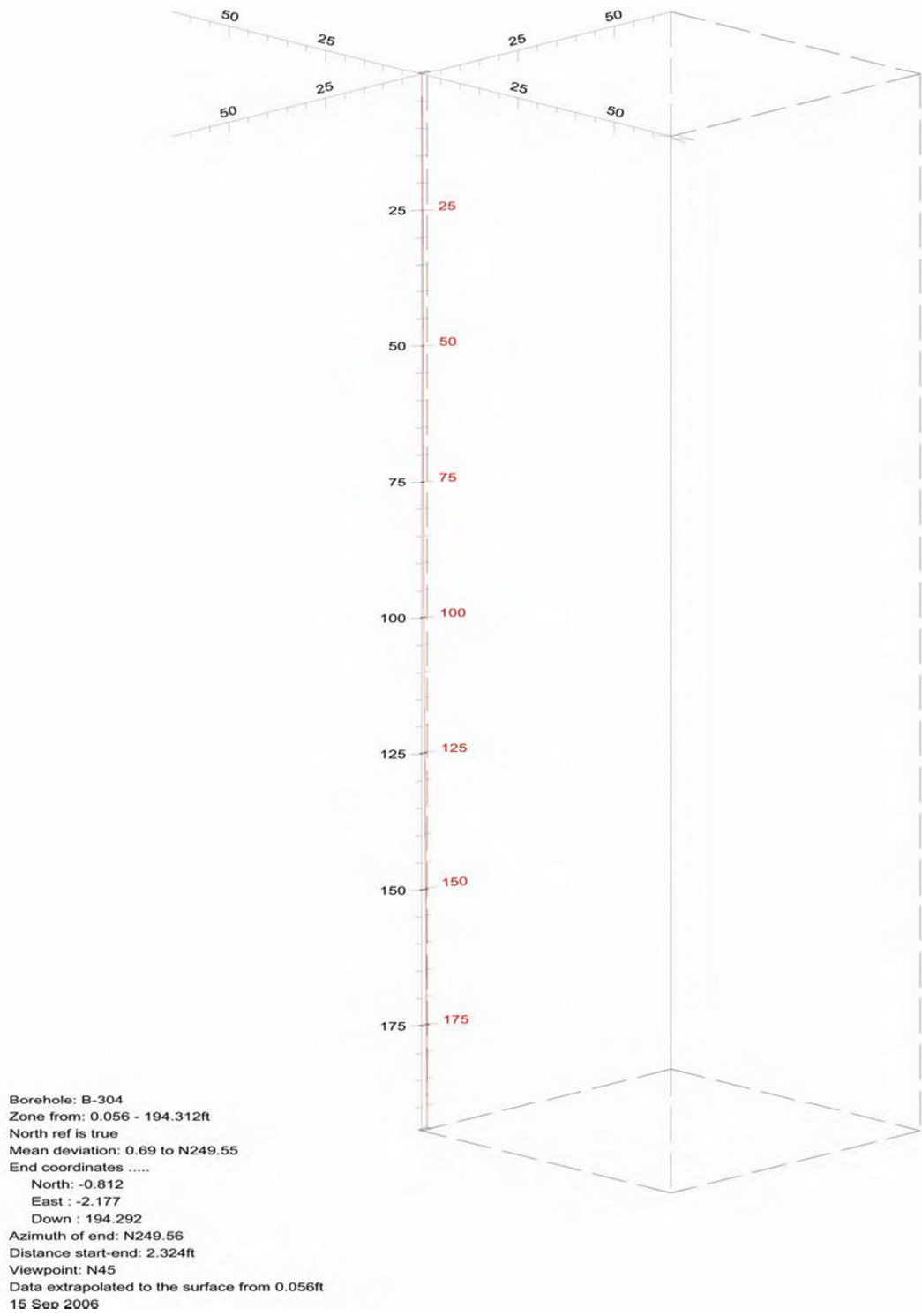


Figure 11. Boring B-304, Deviation Projection (dimensions in feet)

**CCNPP COLA Borehole B-307 velocity data
Receiver to Receiver V_s and V_p Analysis**

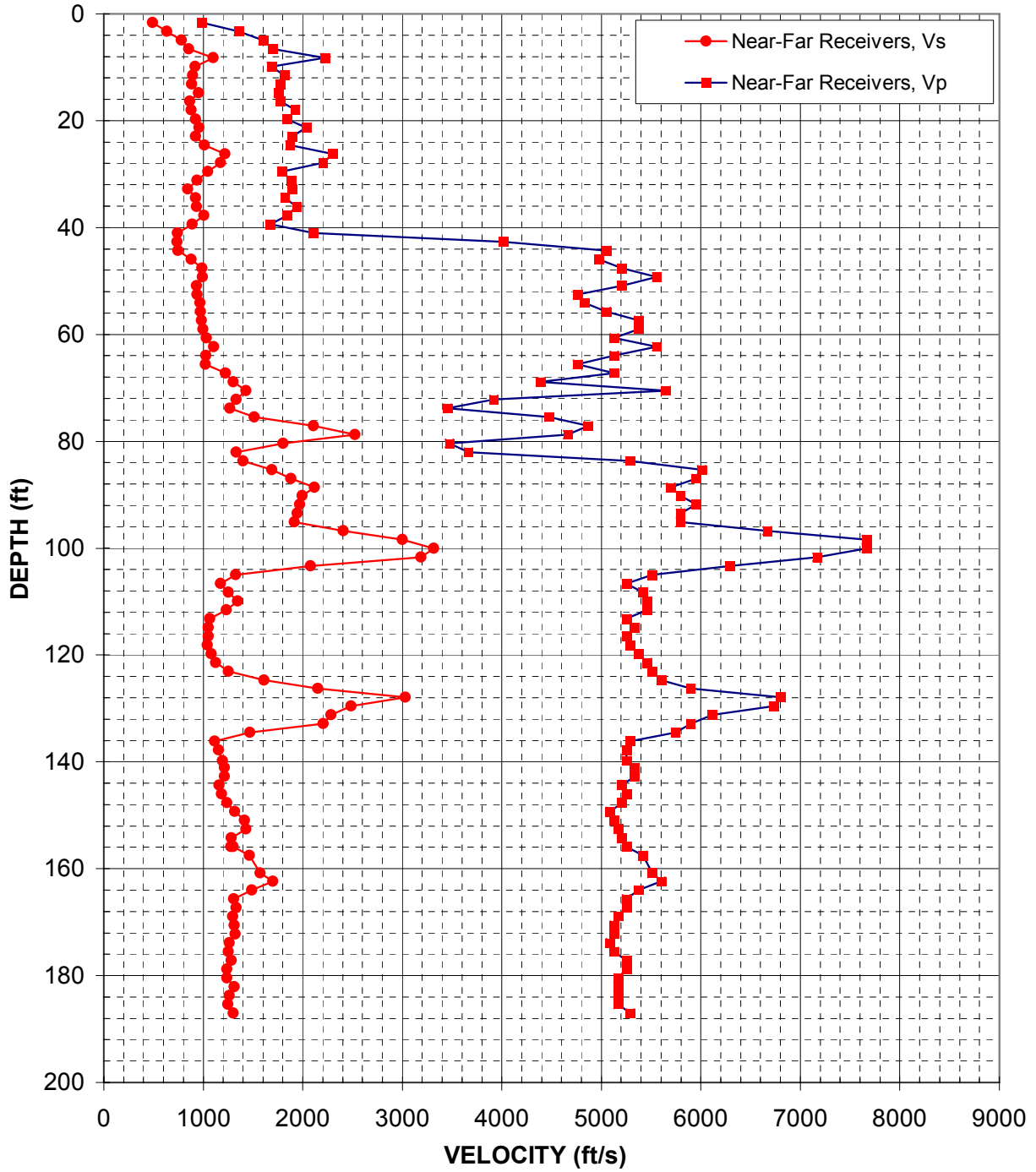


Figure 12. Boring B-307, Suspension R1-R2 P- and S_H -wave velocities

Depth (feet)	V _s (feet/sec)	V _p (feet/sec)
1.6	490	990
3.3	630	1360
4.9	780	1600
6.6	850	1700
8.2	1100	2220
9.8	920	1680
11.5	890	1810
13.1	890	1770
14.8	960	1750
16.4	860	1770
18.0	880	1930
19.7	930	1840
21.3	960	2030
23.0	920	1890
24.6	1010	1870
26.3	1220	2300
27.9	1170	2210
29.5	1040	1790
31.2	940	1880
32.8	840	1890
34.5	930	1820
36.1	930	1940
37.7	1010	1840
39.4	890	1680
41.0	740	2110
42.7	740	4020
44.3	750	5050
45.9	880	4980
47.6	990	5210
49.2	990	5560
50.9	930	5210
52.5	940	4760
54.1	970	4830
55.8	970	5050
57.4	980	5380
59.1	1000	5380
60.7	1030	5130
62.3	1110	5560
64.0	1030	5130
65.6	1020	4760
67.3	1230	5130
68.9	1300	4390
70.5	1430	5650
72.2	1330	3920
73.8	1270	3450
75.5	1520	4470
77.1	2110	4870
78.7	2530	4660
80.4	1800	3470
82.0	1330	3660

Depth (feet)	V _s (feet/sec)	V _p (feet/sec)
83.7	1400	5290
85.3	1690	6010
86.9	1880	5950
88.6	2120	5700
90.2	2000	5800
91.9	1970	5950
93.5	1940	5800
95.1	1920	5800
96.8	2410	6670
98.4	3000	7660
100.1	3320	7660
101.7	3190	7170
103.4	2080	6290
105.0	1330	5510
106.6	1170	5250
108.3	1250	5420
109.9	1340	5460
111.6	1230	5460
113.2	1070	5250
114.8	1050	5330
116.5	1050	5250
118.1	1040	5290
119.8	1080	5380
121.4	1130	5460
123.0	1250	5510
124.7	1610	5600
126.3	2150	5900
128.0	3030	6800
129.6	2490	6730
131.2	2280	6120
132.9	2210	5900
134.5	1470	5750
136.2	1110	5290
137.8	1150	5250
139.8	1190	5250
141.1	1210	5330
142.7	1210	5330
144.4	1160	5210
146.0	1180	5250
147.6	1240	5210
149.3	1320	5090
150.9	1410	5130
152.6	1430	5170
154.2	1280	5210
155.8	1280	5250
155.8	1300	5250
157.5	1460	5420
160.8	1570	5510
162.4	1700	5600
164.0	1490	5380

Depth (feet)	V _s (feet/sec)	V _p (feet/sec)
165.7	1310	5250
167.3	1330	5250
169.0	1300	5170
170.6	1310	5130
172.2	1320	5130
173.9	1260	5090
175.5	1250	5130
177.2	1280	5250
178.8	1240	5250
180.5	1240	5170
182.1	1310	5170
183.7	1260	5170
185.4	1250	5170
187.0	1300	5290

Table 9. Boring B-307, Suspension R1-R2 depths and P- and S_H-wave velocities

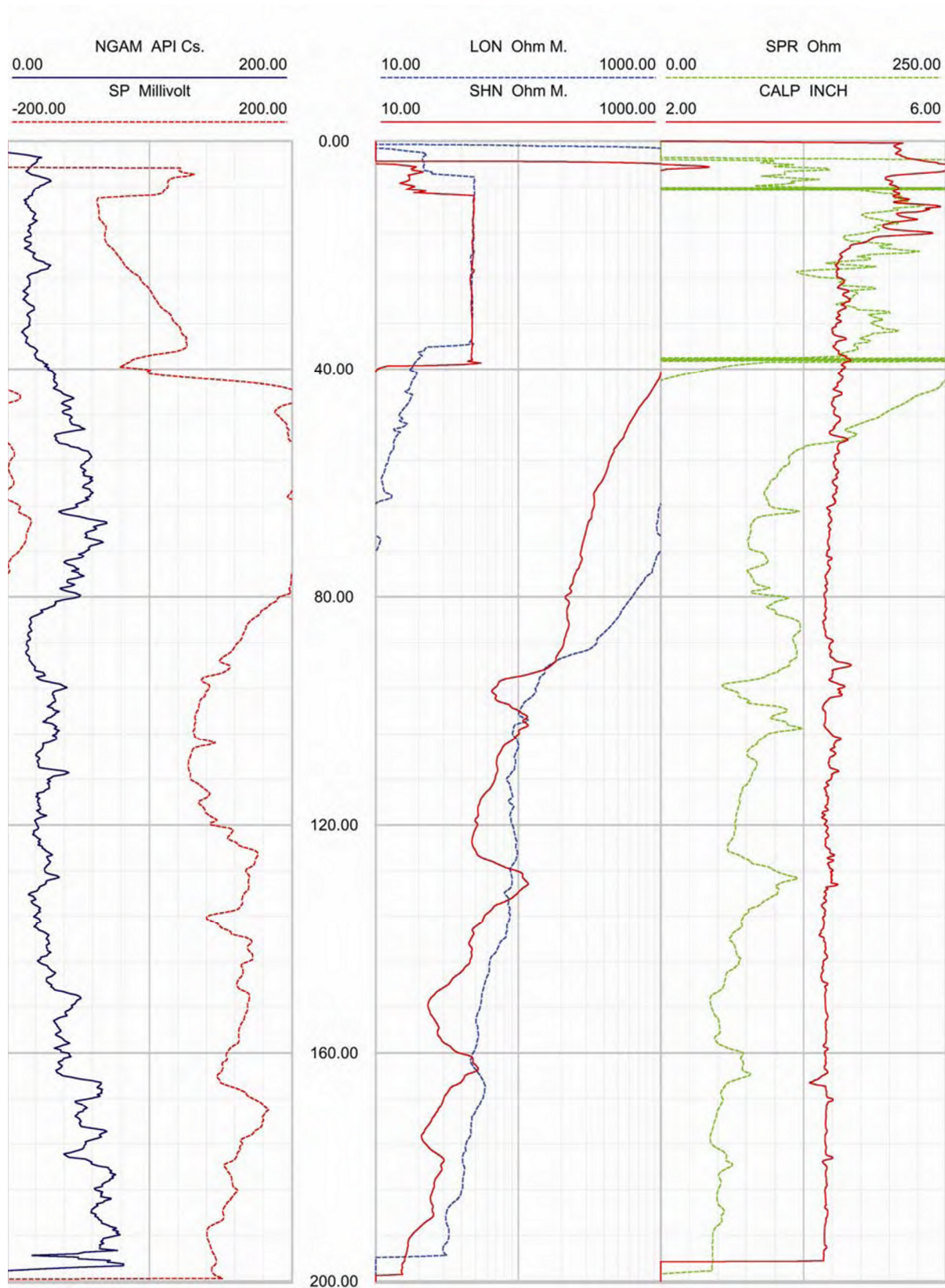


Figure 13. Boring B-307, Caliper, Natural gamma, Resistivity and SP logs

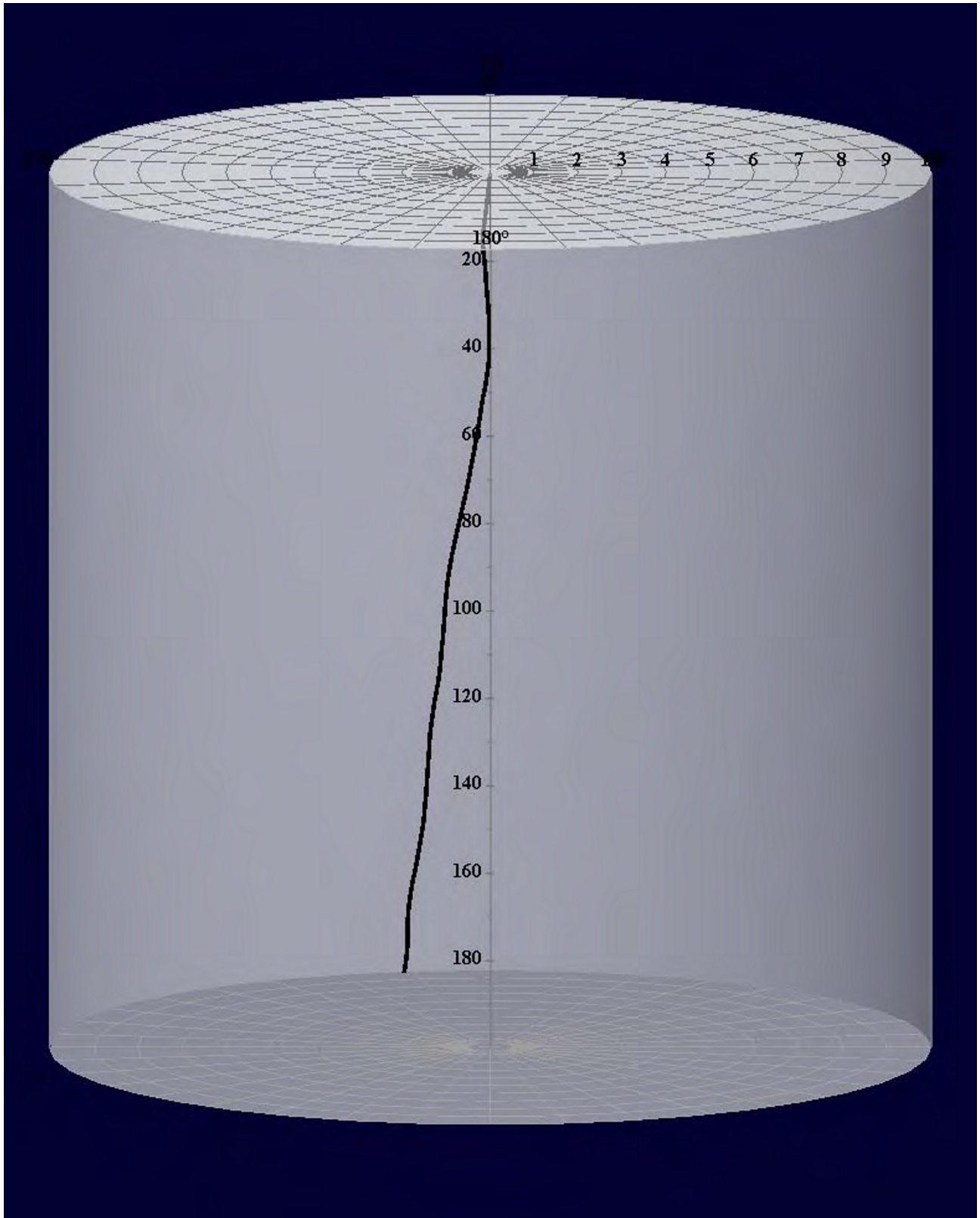


Figure 14. Boring B-307, Deviation Projection (dimensions in feet)

**CCNPP COLA Borehole B-318 velocity data
Receiver to Receiver V_s and V_p Analysis**

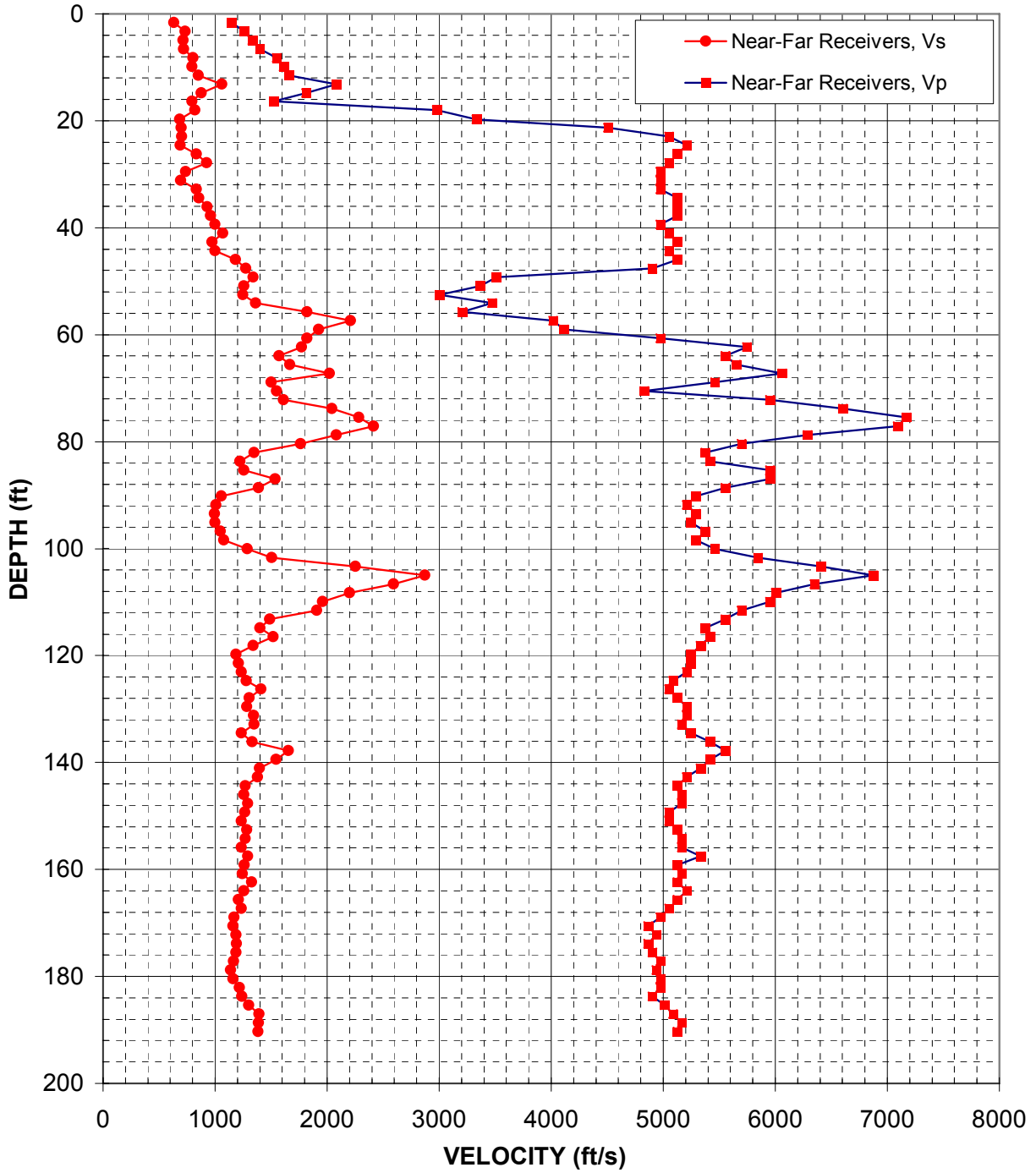


Figure 15. Boring B-318, Suspension R1-R2 P- and S_H -wave velocities

Depth (feet)	V _s (feet/sec)	V _p (feet/sec)
1.6	630	1150
3.3	730	1260
4.9	720	1330
6.6	720	1400
8.2	800	1550
9.8	790	1610
11.5	850	1660
13.1	1060	2080
14.8	880	1810
16.4	800	1520
18.0	820	2980
19.7	690	3330
21.3	700	4500
23.0	700	5050
24.6	690	5210
26.3	830	5130
27.9	930	5050
29.5	740	4980
31.2	690	4980
32.8	840	4980
34.5	850	5130
36.1	930	5130
37.7	960	5130
39.4	1000	4980
41.0	1070	5050
42.7	970	5130
44.3	1000	5050
45.9	1180	5130
47.6	1280	4900
49.2	1340	3510
50.9	1260	3370
52.5	1250	3000
54.1	1360	3470
55.8	1820	3210
57.4	2210	4020
59.1	1930	4120
60.7	1820	4980
62.3	1770	5750
64.0	1570	5560
65.6	1670	5650
67.3	2020	6060
68.9	1500	5460
70.5	1550	4830
72.2	1610	5950
73.8	2040	6600
75.5	2280	7170
77.1	2420	7090
78.7	2080	6290
80.4	1760	5700
82.0	1350	5380

Depth (feet)	V _s (feet/sec)	V _p (feet/sec)
83.7	1220	5420
85.3	1260	5950
86.9	1540	5950
88.6	1390	5560
90.2	1060	5290
91.9	1010	5210
93.5	1000	5290
95.1	1000	5250
96.8	1050	5380
98.4	1080	5290
100.1	1290	5460
101.7	1510	5850
103.4	2250	6410
105.0	2870	6870
106.6	2590	6350
108.3	2200	6010
109.9	1960	5950
111.6	1910	5700
113.2	1490	5560
114.8	1400	5380
116.5	1520	5420
118.1	1340	5330
119.8	1190	5250
121.4	1210	5250
123.0	1240	5210
124.7	1280	5090
126.3	1410	5050
128.0	1300	5130
129.6	1280	5210
131.2	1350	5210
132.9	1350	5170
134.5	1230	5250
136.2	1330	5420
137.8	1650	5560
139.4	1550	5420
141.1	1400	5330
142.7	1380	5210
144.4	1270	5130
146.0	1260	5170
147.6	1290	5170
149.3	1270	5050
150.9	1240	5050
152.6	1280	5130
154.2	1270	5170
155.8	1230	5170
157.5	1290	5330
159.1	1260	5130
160.8	1240	5170
162.4	1330	5130
164.0	1260	5210

Depth (feet)	V _s (feet/sec)	V _p (feet/sec)
165.7	1210	5130
167.3	1240	5050
169.0	1170	4980
170.6	1160	4870
172.2	1190	4940
173.9	1190	4870
175.5	1190	4900
177.2	1170	4980
178.8	1140	4940
180.5	1160	4980
182.1	1220	4980
183.7	1240	4900
185.4	1300	5010
187.0	1390	5090
188.7	1390	5170
190.3	1380	5130

Table 10. Boring B-318, Suspension R1-R2 depths and P- and S_H-wave velocities

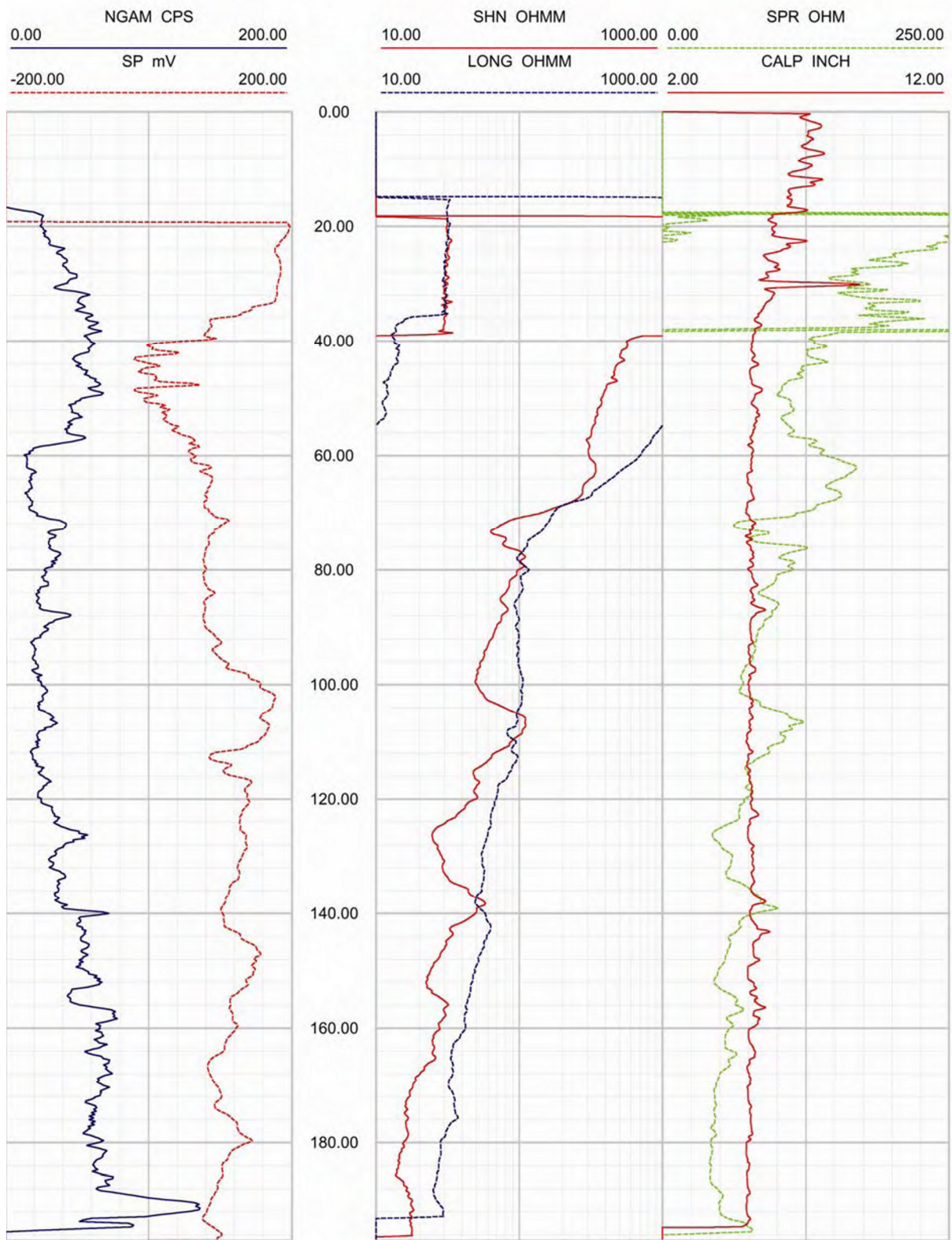


Figure 16. Boring B-318, Caliper, Natural gamma, Resistivity and SP logs

Deviated borehole in orthographic projection, viewed from N45

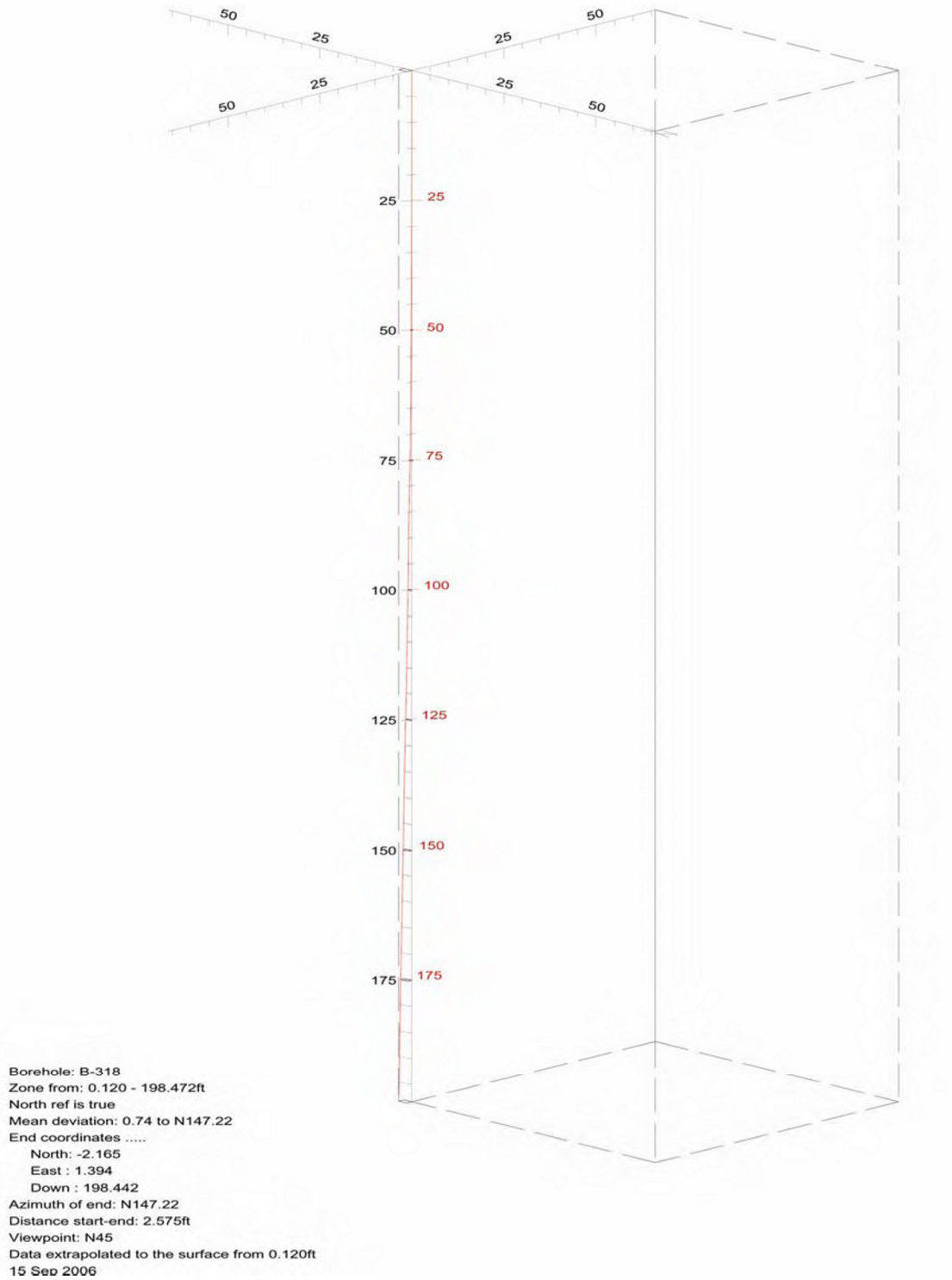


Figure 17. Boring B-318, Deviation Projection (dimensions in feet)

**CCNPP COLA Borehole B-323 velocity data
Receiver to Receiver V_s and V_p Analysis**

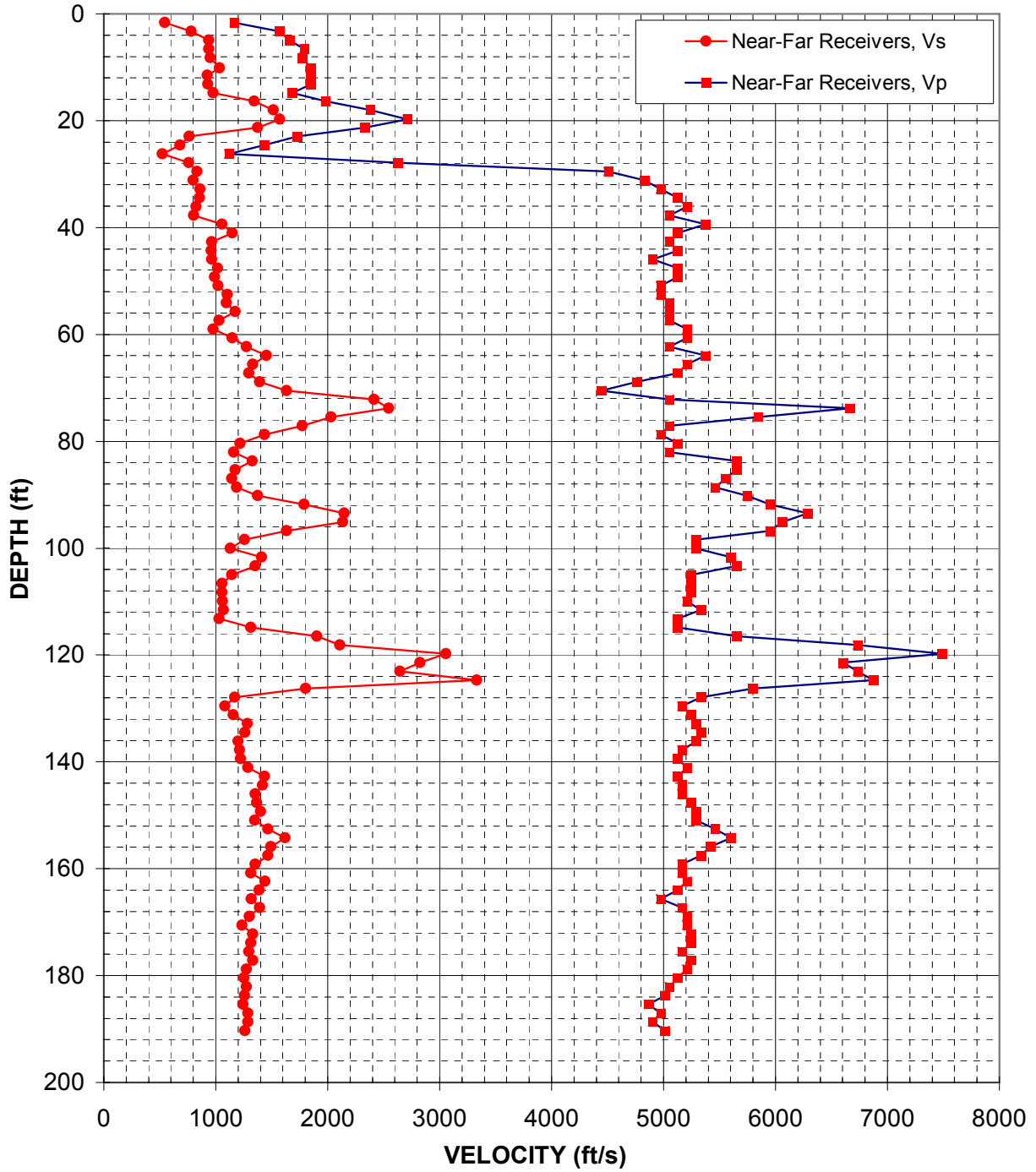


Figure 18. Boring B-323, Suspension R1-R2 P- and S_H -wave velocities

Depth (feet)	V _s (feet/sec)	V _p (feet/sec)	Depth (feet)	V _s (feet/sec)	V _p (feet/sec)	Depth (feet)	V _s (feet/sec)	V _p (feet/sec)
1.6	550	1170	83.7	1330	5650	165.7	1320	4980
3.3	780	1570	85.3	1170	5650	167.3	1390	5170
4.9	940	1660	86.9	1150	5560	169.0	1300	5210
6.6	940	1790	88.6	1190	5460	170.6	1230	5210
8.2	950	1770	90.2	1380	5750	172.2	1330	5250
10.2	1030	1850	91.9	1790	5950	173.9	1310	5250
11.5	930	1850	93.5	2150	6290	175.5	1300	5170
13.1	930	1850	95.1	2140	6060	177.2	1330	5250
14.8	980	1680	96.8	1630	5950	178.8	1280	5210
16.4	1340	1980	98.4	1260	5290	180.5	1250	5130
18.0	1520	2380	100.1	1130	5290	182.1	1280	5050
19.7	1570	2710	101.7	1410	5600	183.7	1260	5010
21.3	1380	2330	103.4	1360	5650	185.4	1240	4870
23.0	760	1730	105.0	1150	5250	187.0	1290	4980
24.6	680	1430	106.6	1060	5250	188.7	1290	4900
26.3	520	1120	108.3	1050	5250	190.3	1260	5010
27.9	760	2620	109.9	1060	5210			
29.5	840	4500	111.6	1070	5330			
31.2	800	4830	113.2	1030	5130			
32.8	860	4980	114.8	1310	5130			
34.5	850	5130	116.5	1900	5650			
36.1	830	5210	118.1	2110	6730			
37.7	810	5050	119.8	3060	7490			
39.4	1060	5380	121.4	2820	6600			
41.0	1150	5130	123.0	2650	6730			
42.7	970	5050	124.7	3330	6870			
44.3	960	5130	126.3	1800	5800			
45.9	970	4900	128.0	1170	5330			
47.6	1020	5130	129.6	1080	5170			
49.2	990	5130	131.2	1160	5250			
50.9	1020	4980	132.9	1280	5290			
52.5	1100	4980	134.5	1260	5330			
54.1	1100	5050	136.2	1200	5290			
55.8	1170	5050	137.8	1210	5170			
57.4	1030	5050	139.4	1220	5130			
59.1	980	5210	141.1	1290	5210			
60.7	1150	5210	142.7	1440	5130			
62.3	1280	5050	144.4	1420	5170			
64.0	1460	5380	146.0	1360	5170			
65.6	1330	5210	147.6	1370	5250			
67.3	1300	5130	149.3	1400	5290			
68.9	1390	4760	150.9	1350	5290			
70.5	1630	4440	152.6	1470	5460			
72.2	2420	5050	154.2	1620	5600			
73.8	2540	6670	155.8	1490	5420			
75.5	2030	5850	157.5	1470	5330			
77.1	1770	5050	159.1	1360	5170			
78.7	1440	4980	160.8	1310	5170			
80.4	1220	5130	162.4	1440	5210			
82.0	1160	5050	164.0	1390	5130			

Table 11. Boring B-323, Suspension R1-R2 depths and P- and S_H-wave velocities

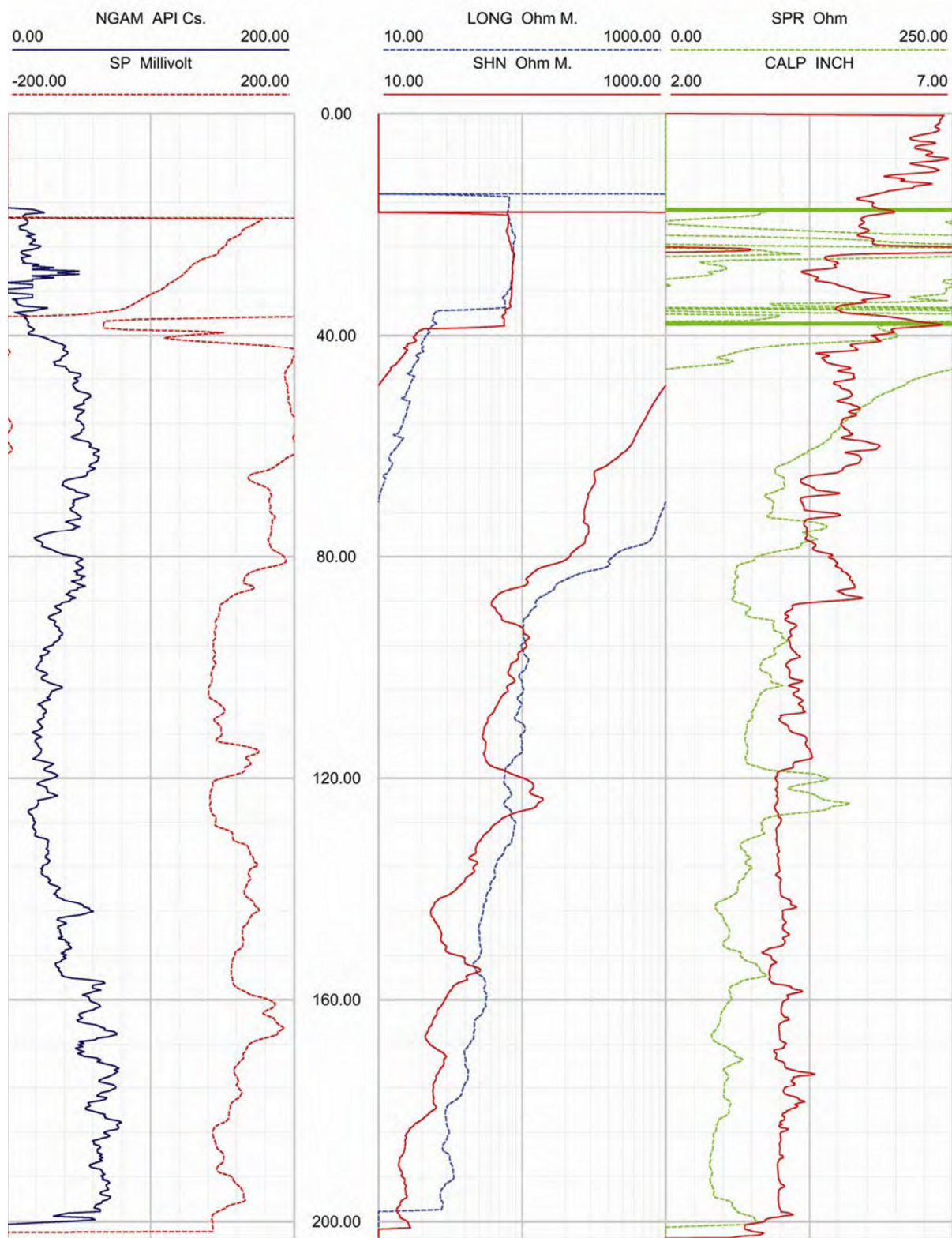


Figure 19. Boring B-323, Caliper, Natural gamma, Resistivity and SP logs