

**LEE COUNTY**

**EMERGENCY**

**RESPONSE PLAN**

**FOR THE**

**HARRIS NUCLEAR**  
**PLANT**

**This Page Intentionally Left Blank**

**CERTIFICATION**

Lee County will use this Plan in combination with the North Carolina Radiological Emergency Response Plan in the event of an emergency at the Progress Energy Company Harris Nuclear Plant. The undersigned agree to the responsibilities assigned to their organizations in this Plan.

Signed by Robert Brown

\_\_\_\_\_

Date: \_\_\_\_\_

Richard Hayes, Chairman  
Lee County Board of County Commissioner

Signed by Eric Griffin

\_\_\_\_\_

Date: \_\_\_\_\_

Eric Griffin, Director  
Lee County Emergency Management

**This Page Intentionally Left Blank**

## **FOREWORD**

This plan was developed using the guidelines and information in NUREG-0654, Rev 1, Criteria for Preparation and Evaluation of Radiological Emergency Response Plans and Preparedness in Support of Nuclear Power Plants, dated November 1980. Appropriate criteria items contained in NUREG-0654 are addressed in the plan.

The plan is a mutually supportive emergency response document. It identifies resources and responsibilities of response organizations and establishes a design by which they will be meshed to protect the population that could be adversely affected by an emergency at the Progress Energy Harris Nuclear Plant.

It contains five parts. PART-1 establishes State procedures and stipulates how the State integrates its emergency response activity with other major response jurisdictions and organizations. Similarly, PART-2 contains county plans and guidelines which stipulate how the counties integrate their emergency response activity with other major response jurisdictions and organizations. For thoroughness, each part is designed around the major functions identified in NUREG-0654.

FIGURES support written information for each individual part. ANNEXES contain additional information and details that could be applicable to all parts. For these reasons, and the existence of emergency procedures at the State and local levels, separate implementing procedures are not deemed necessary.

**This Page Intentionally Left Blank**

<b>LEE COUNTY PLAN</b>
------------------------

**I. PURPOSE**

- A.** Lee County has employed the guidance presented in NUREG-0654, dated November 1980, to meet the United States Nuclear Regulatory Commission regulation requiring local governments to establish a level of preparedness, and to develop and maintain emergency response plans in support of nuclear power plants.
- B.** The portion of Lee County within the 10-mile emergency-planning zone (EPZ) of the Progress Energy Company's Harris Nuclear Plant are identified as Zones I and J. (See Section X, **FIGURE-19**)
- C.** To prescribe those actions to be taken by Lee County and threatened political subdivisions to protect the health and safety of the general public which may be affected by radiation exposure and environmental contamination resulting from an accident at the Harris Plant.
- D.** Define the roles of the county and local political subdivisions prior to, during and after the need to evacuate any portion of Lee County.
- E.** Provide for the coordination, direction, control and continuity of governments in this and similar emergency situations.
- F.** To provide the basis for preparation of detailed emergency operating guidelines and training by the various public and private emergency support agencies within and outside the county.

**II. CONCEPT OF OPERATIONS**

- A.** In the event of an emergency at the Progress Energy Company's Harris Nuclear Plant, the plant will immediately notify, among others, the Lee County Warning Point located at the Police Department, Sanford Municipal Center in Sanford, NC. The report will include the class of the emergency, other supporting information, and recommendations for protective actions.
- B.** If the emergency poses a radiation threat to the surrounding community, Lee County will immediately take appropriate actions to inform the residents in the threatened areas of the actions that should be taken. The population will be alerted by a combination fixed siren systems, Emergency Alert System (EAS) radio and television announcements, National Weather Service (NWS), public address announcements, mobile

alerting and other communication systems that are appropriate to the situation. (See Section X, Annex-E, Emergency Alert System Guidelines)

- C.** Local government and emergency service organizations must plan for and be prepared to direct off-site emergency operations until assistance can be received from the State Emergency Response Team (SERT).
- D.** The State assumes direction and control authority in accordance with the following:
  - 1. **Option A:** At the request of the county or counties concerned, SERT assumes direction and control authority effective at the specified date, time, and location, **or**
  - 2. **Option B:** A State of Emergency has been declared; SERT has been established and assumes direction and control authority effective at the specified date, time and location.
  - 3. SERT dispatches a message to each county concerned, the licensee and the State Warning Point. (See Section X, **FIGURE-15**)
- E.** The Lee County Emergency Services Management Director is responsible for planning, organizing and coordinating the emergency response conducted by Lee County government. The Lee County Manager will serve as the alternate Emergency Management Director for Lee County.
- F.** Lee County is capable of continuous (24-hour) operations for an extended period.
- G.** Within their respective jurisdictions, the head or supervisor of each county government department will be responsible for assuring continuity of operations and resources.
- H.** Emergency communications links among State, Local and Federal agencies and between Progress Energy Company and State and County governments are staffed 24 hours a day. (See Section-VI, Emergency Communications)
- I.** In summary, the Lee County Plan contains emergency guidelines to be implemented throughout the EPZ. In developing the emergency response concept of operations, two time frames were considered. During the first period, when an emergency condition exists at the facility but is not serious enough to warrant a declaration of a State of Emergency by the Governor of North Carolina, the County directs the actions of county emergency response personnel. In the second period, when the



emergency condition has escalated to such a level that the Governor declares a State of Emergency, the State assumes responsibility for direction and control of off-site emergency operations.

- J. Where operationally effective, such direction and control will be exercised through the appropriate Lee County chain-of-command.

### **III. ORGANIZATION AND RESPONSIBILITIES**

- A. This section assigns responsibility for Lee County emergency response organizations to inform, protect and evacuate in the event an emergency at the Harris Plant. It also establishes the responsibilities of other organizations to provide personnel, equipment and expertise in a supporting role. (See Section X, **FIGURE-1**, Organizational Chart)
- B. **OVERALL RESPONSIBILITY:** The responsibility for decision-making within Lee County rests with the Lee County Commissioners, who have the ultimate responsibility for the protection of life and property within this county. Lee County shall provide the basic planning, training, guidance, and evacuation support, as required, to the Local Township and Municipalities.
- C. **GENERAL TASKS:** Any county or municipal agency, department, or organization may be tasked with an emergency mission. The supervisor or designee, of each agency is responsible for the accomplishment of an assigned task or function. A number of the primary functions are listed in the following paragraphs. In addition, these organizations are assigned the following general tasks.
  - 1. Provide personnel, equipment and facilities on a 24-hour basis.
  - 2. Plan and provide for the safety of employees and protection of public property in the event of an emergency.
  - 3. Coordinate actions with the Lee County Emergency Management Director and with departments having related tasks.
  - 4. Train personnel in their support role and participate in exercises to test emergency plans and guidelines.
  - 5. As appropriate, provide personnel to staff the Lee County EOC and serve as a liaison to the SERT.
  - 6. Provide for record keeping and documentation of the emergency and actions taken.

7. Manage radiation exposure of departmental personnel and maintain exposure records.
8. Prepare damage and loss reports.

**D. DEPARTMENTAL FUNCTIONS:**

1. LEE COUNTY EMERGENCY MANAGEMENT DIRECTOR or ALTERNATE
  - a. Recommend the activation of the County EOC (located in the Sanford Police Department) and maintain it on a 24-hour basis.
  - b. Provide direction and control, and coordinate communications within the EOC.
  - c. Develop contingency plans that provide for a rapid and coordinated response of emergency management and coordinate protective response operations.
  - d. Maintain key alert notification list and guidelines.
  - e. Assemble and dispatch emergency workers and coordinate communications between the EOC and response personnel.
  - f. Serve as advisor to the Board of County Commissioners and provide situation reports and other information including any recommendations to the State on the activation of SERT.
  - g. Coordinate training of local emergency workers.
  - h. Coordinate support to the emergency workers in the field.
  - i. Provide and coordinate communications with the State.
  - j. Contact the National Weather Service for long-range weather forecasts.
  - k. Ensure documentation of contaminated persons or vehicles is maintained.
2. MUNICIPAL POLICE CHIEF
  - a. Assist with law enforcement and traffic control.
  - b. Establish and maintain communication links between the

**North Carolina Radiological Emergency Response Plan  
Part 2, Section 2, LEE COUNTY PLAN  
January 2008**

Harris Plant and the Sanford Communication Center and provide communications support to the County EOC.

- c. Provide traffic control and security in support of evacuation. Report traffic problems to the County EOC.
- d. Direct contaminated persons and vehicles to designated decontamination stations.
- e. Maintain a 24-hour Notification and Warning point in the Sanford Communication Center.
- f. During a declared State of Emergency provide the State Highway Patrol with local law enforcement resources and assistance.

3. LEE COUNTY SHERIFF

- a. Coordinate law enforcement and traffic control for entire county by coordinating with appropriate partners.
- b. Provide communications support to the County EOC as requested.
- c. Provide traffic control measures in support of evacuation, in the vicinity of reception centers and effect security guidelines around restricted areas.
- d. Establish roadblocks for traffic control and prevent unauthorized entry into contaminated or restricted zones.
- e. Direct contaminated persons and vehicles to designated decontamination stations, and provide escort services when required.
- f. During a declared State of Emergency, provide the State Highway Patrol with local law enforcement resources and assistance.
- g. Provide back up support for Siren Back-up and Mobile / Route Alerting where assigned.

4. EMERGENCY MEDICAL SERVICE DIRECTOR

- a. Maintain training programs for medical support personnel who may be called upon to care for radiological contaminated victims.

**North Carolina Radiological Emergency Response Plan  
Part 2, Section 2, LEE COUNTY PLAN  
January 2008**

- b. Provide emergency communications capability for medical facilities and ambulances.
  - c. Coordinate emergency medical services at reception and care centers.
  - d. Provide technical information to the EOC on available emergency medical personnel.
  - e. Provide radiation safety training to emergency medical personnel through existing emergency medical training programs.
  - f. Assist in obtaining ambulances and rescue resources.
  - g. Provide support to the area Fire Departments for public warning and evacuation.
  - h. Support fire departments in decontamination operations as required.
5. SANFORD FIRE CHIEF
- a. Provide equipment and personnel for monitoring and decontamination operations at area reception centers.
  - b. Provide local area communications for unit to unit and unit to EOC.
  - c. Coordinate fire-fighting activities within the municipality.
  - d. Support warning and evacuation of the public within threatened or contaminated zones.
6. Lee County Fire Marshal
- a. Serve as alternate emergency management director
  - b. Identify staff to serve as coordinator of volunteer fire response
  - c. Coordinate volunteer fire operations with municipal fire operations
7. CHAIRMAN, LEE COUNTY BOARD OF COMMISSIONERS

**North Carolina Radiological Emergency Response Plan  
Part 2, Section 2, LEE COUNTY PLAN  
January 2008**

- a. Provide Policy and Administrative guidance for emergency response actions within the county.
  - b. Coordinate these actions with other units of government.
8. LEE COUNTY MANAGER
- a. Provide administrative support, supplies and equipment to maintain operations of the Lee County EOC.
  - b. Provide other assistance as needed to support county operations.
  - c. Serve as Alternate Emergency Management Director. – Delete this line and retask to County Fire Marshal
9. PUBLIC INFORMATION OFFICER (PIO)
- a. Release timely and accurate information to the public.
  - b. Maintain close coordination with the Harris Plant PIO, the NC Department of Crime Control and Public Safety's PIO and the Chairman of the Board of County Commissioners on public information releases. (See Section-IV.D., Public Education and Information).
  - c. Function as Lee County's representative in the Joint Information Center when activated.
  - d. oversee public information staff in accordance with PIO standard operating guidelines
10. LEE COUNTY SOCIAL SERVICES DIRECTOR
- a. Serve as human services sector leader
  - b. Oversee management of all sheltering and reception center operations.
  - c. Provide general direction of Red Cross personnel in care center operations at the designated areas and support shelter operations utilizing Red Cross protocols.
  - d. Provide personnel for reception center operations.
  - e. Provide liaison to the EOC.

- d. Coordinate the Unmet Needs committee in accordance with the County Multi-hazard plan

11. LEE COUNTY PUBLIC WORKS DIRECTOR

- a. Provide support in obtaining drums to be used for packaging contaminated material.
- b. Support transportation of supplies and equipment.
- c. Assist the Joint Information Center in providing information to the public for proper disposal of perceived contaminated personal effects.

12. NC COOPERATIVE EXTENSION SERVICE, LEE COUNTY DIRECTOR

- a. Assist the U.S. Department of Agriculture (Local Food & Agriculture Council) in locating and reporting sources of uncontaminated feed for livestock in contaminated areas.
- b. Assist in assessing the impact of contamination of livestock, produce and processed food.
- c. Provide an interface with the NC Cooperative Extension Service representative in the Joint Information Center to assist in informing local producers and users of agricultural commodities of the results of the incident and the protective action recommendations.
- d. Function as a liaison between local agricultural commodity producers, State and Federal agencies to serve as a clearinghouse for information related to the emergency.
- e. Provide personnel to act as guides for NC Department of Agriculture sampling teams and for other sampling teams.
- f. Provide a liaison to the EOC.

13. LEE COUNTY SCHOOLS SUPERINTENDENT

- a. Support care and reception center operations through the provision of facilities.
- b. Assist Lee County Social Services and Red Cross in care center operations.

**North Carolina Radiological Emergency Response Plan  
Part 2, Section 2, LEE COUNTY PLAN  
January 2008**

- c. Provide personnel to assist with the operation of reception and care centers.
- d. Designate school facilities outside the EPZ for use as reception and care centers or other supporting functions.
- e. Provide buses and other transportation mechanisms with drivers to transport individuals and groups outside the EPZ.
- f. Provide equipment, personnel, and supplies to establish and operate kitchens for mass feedings.

14. LEE COUNTY RED CROSS DIRECTOR

- a. Under oversight from Social Services, direct operations in the designated shelters and coordinate the support of school personnel utilizing Red Cross protocols.
- b. Provide assistance to individual families.
- c. Augment Lee County medical personnel, mental health, and associated supplies and equipment.
- d. Support efforts in locating clothing, and other personal goods and supplies for evacuees.
- e. assist with family relocation notification and tracking and assist in family reunification with Social Services

15. LEE COUNTY HEALTH DEPARTMENT DIRECTOR

- a. Coordinate public health functions as applied to a radiological emergency.
- b. Provide a liaison to the EOC and provide technical assistance and consultation as needed.
- c. Provide technical assistance and supervision to county and city water supply operations for any special or unusual treatments.
- d. After consultation with the N.C. Division of Environmental Health, order water supply plants to cease operations and close water intake systems where necessary.
- e. Provide technical assistance for water supplies having less than fifteen (15) connections.

**North Carolina Radiological Emergency Response Plan  
Part 2, Section 2, LEE COUNTY PLAN  
January 2008**

- f. Maintain close coordination with RPS for current dose projections and downwind plume direction.
  - g. Ensure the proper storage and distribution of potassium iodide (KI) to emergency workers institutionalized persons, nursing care facilities, and the general public within the 10-mile EPZ.
  - h. Provide Registered Nurses for care center operations.
16. LEE County Unit Director of Sandhills Local Management Entity
- a. Supports care center operations with crisis counselors.
  - b. Support the Lee County Red Cross, Social Services, and Health Department in care center operations.
  - c. Provide liaison to the EOC.
17. LEE COUNTY VOLUNTEER FIRE DEPARTMENT CHIEFS
- a. Support monitoring of evacuees at designated reception centers.
  - b. Support reception center communications as needed.
  - c. Provide equipment and personnel for decontamination operations.
  - d. Provide local area communications.
  - e. Conduct public warning and evacuation within threatened or contaminated zones.
  - f. Support fire-fighting activities.
  - g. Coordinate operations with County Fire Marshal
  - h. Provide liaison to EOC upon request.
18. SANFORD PUBLIC WORKS DIRECTOR
- a. Provide support in obtaining drums to be used for packaging contaminated material.
  - b. Provide necessary maintenance personnel and equipment.
  - c. Provide liaison to the EOC.



- d. Provide technical assistance for water supply issues.
19. COUNTY of LEE TRANSIT SYSTEM COORDINATOR (COLTS)
- a. Provide vans with drivers to transport individuals and groups from inside EPZ to reception and care centers.
  - b. Provide liaison to the EOC.
20. STATE AND FEDERAL AGENCIES IN SUPPORT ROLE
- a. North Carolina Department of Crime Control and Public Safety (CCPS) will coordinate the state effort to provide support for response and recovery.
  - b. North Carolina State Highway Patrol will provide law enforcement, traffic control, and security roadblocks.
  - c. NC Parks and Recreation, Wildlife Commission, and U.S. Corp of Engineers, provide warning, notification, and recreational area evacuation.
  - d. National Weather Service Office will release emergency public service messages via the National Oceanic and Atmospheric Administration (NOAA) weather radio.
21. PRIVATE BUSINESSES, INDUSTRIES AND ELECTRIC UTILITY COMPANIES
- a. Progress Energy Company
    - (1) Develop emergency response plan to support the Harris Nuclear Plant.
    - (2) Provide prompt and accurate reports of abnormal activity at the plant to local government and state agencies as required by the United States Nuclear Regulatory Commission (NRC).
    - (3) Provide accident assessment at the plant.
    - (4) Provide protective action recommendations to State and local government.
    - (5) Provide equipment and training required to support State and local government response activities.
    - (6) Send a technical representative to the County EOC based on an emergency classification, or upon request from the county.

- b. Radio Station WQDR-FM 94.7 FM is the Local Primary (LP-1) station for Emergency Alert System (EAS) to broadcast emergency instructions and information to the public on a 24-hour basis.

**IV. LEE COUNTY COORDINATING INSTRUCTIONS:**

- A. Many tasks to be undertaken during the conduct of emergency operations will require the resources and the efforts of more than one agency of government.
- B. Some tasks may require the efforts of various combinations of Federal, State and County agencies and private organizations.
- C. Some Lee County agencies have the resources and capability to accomplish the same task.
- D. Lee County department and agency heads, directors and supervisors are responsible for preparing their organizations to accept the role of "lead agency" when directed by the appropriate authority.

**V. PRIMARY AND SUPPORT RESPONSIBILITY SUMMARY**

- A. The Lee County Plan lists the major functions associated with emergency operations, major response organizations and the level of responsibility for the function. It is not intended to be all-inclusive, but rather to summarize the operational concept employed. The ranking member of the unit of government participating in the special function is responsible for organizing, training, equipping, committing and controlling personnel for emergency response. (See Section X, **FIGURE-2**)
- B. The fact that a unit of government is assigned primary responsibility for a specific function does not necessarily mean that the unit possesses the capability to perform all tasks included in the function. The term "primary responsibility" as used herein is intended to mean "responsible for carrying out the function or seeing that it is carried out." Personnel with primary and support responsibilities are to be employed in a cohesive manner under the direction of the individual in charge of the unit with primary responsibility.
- C. The policy development, major decision-making and operational elements of the command and control function are carried out as prescribed by the Chairman of the Lee County Board of Commissioners or the designated representative.

- D. The Chairman has delegated to the Lee County Emergency Management Director the authority to act on his behalf in matters related to and dealing with the operational aspects of command and control in the conduct of emergency response actions.
- E. The Lee County Emergency Management Director can delegate to or utilize any personnel, equipment, supplies and/or other resources the Director deems necessary to carry out the function of overall direction and control and other functions for which the Chairman of the Lee County Board of Commissioners is primarily (and secondarily) responsible.
- F. The Lee County Emergency Management Office is available and on call 24 hours a day through the county Warning Point.

**VI. EXECUTION**

**A. EMERGENCY CLASSIFICATION SYSTEM**

- 1. The initial emergency notification and follow-up messages of any one of the four classes of an emergency action level are transmitted from the Harris Plant to the State Warning Point and the warning points in Chatham, Harnett, Lee and Wake Counties. (See Section X, **FIGURE-14**)
- 2. Lee County will rely on information and recommendations provided by the Harris Plant for determination of minimum off-site response measures. (See Section X, **FIGURE-3**)
- 3. The four classes of emergencies are:
  - a. **UNUSUAL EVENT**
  - b. **ALERT**
  - c. **SITE AREA EMERGENCY**
  - d. **GENERAL EMERGENCY**

**B. WARNING and NOTIFICATION METHODS**

- 1. A Selective Signaling System (SSS) dedicated telephone system is the primary means of transmitting the initial and follow-up notification of any one of the four classes of an emergency from the Harris Plant to the County Warning Point and their Emergency Operations Centers (EOC). Commercial telephone is the

secondary means and voice radio is to be the tertiary means of notification.

2. Messages received must be authenticated. The two methods by which a message reporting an emergency action level can be authenticated are:
  - a. The telecommunicator verifies that the code word transmitted is on the list of authentication code words, or (preferred method)
  - b. Upon completion of the call, the telecommunicator calls back to the plant to verify that the report is authentic.
3. The telecommunicator determines the method of authentication. If transmitted by radio, the message must be authenticated by code word.
4. The Emergency Notification Form used to report an emergency to the county warning point or EOC is shown in Section X, **FIGURE-14**. The same format will be used for initial and follow-up messages.
5. The telecommunicator is to complete an Emergency Notification Form at the time the report is being transmitted from the Harris Plant. Particular attention will be given to the emergency action level classification, time, date, Protective Action Recommendations (PAR) and the name of the individual making the report.
  - a. In addition to filling out the form, an electronic copy of the Notification Form will be provided by the plant.
  - b. It is the responsibility of the telecommunicator on duty to assure information copied, sent electronically and/or faxed is legible.
6. Lee County Emergency Management is responsible for assuring the most current edition of the authentication code words is available for telecommunicator and/or dispatcher use. The NC Division of Emergency Management furnishes the authentication code words. The Lee County Emergency Management Office will provide to the Sanford 9-1-1 center copies of any issued changes of the authentication list immediately upon receipt from the State.
7. Coordinating Instructions Notifications

**North Carolina Radiological Emergency Response Plan**  
**Part 2, Section 2, LEE COUNTY PLAN**  
**January 2008**

- a. Due to the sensitive nature of the information included in the notification of an emergency and the requirement for speed, the telephone is to be used by participants to the maximum extent possible.
  - b. If necessary, Sanford Police officers will hand deliver written copies of the emergency notification to designated agencies. (See Section X, **FIGURE-4**)
  - c. Follow-up information and subsequent reports are to be transmitted immediately by the fastest means possible to the individuals shown on the Lee County alert list. (See Section X, **FIGURE-4**)
8. Lee County will have the primary responsibility for warning within the county. When public notification has been recommended by, the Lee County Emergency Management Director or designee, the Lee County Board of Commissioners or ordered by SERT, after the State has assumed command and control, County emergency personnel will immediately implement the necessary means at their disposal to alert and instruct area residents.
- a. **Primary Notification.** The Progress Energy fixed siren system, with activation controls located in the Lee County Warning Point, in conjunction with the appropriate Emergency Alert System (EAS) message, will serve as the primary public alerting system. Once activated, the siren/EAS system is designed to warn immediately the areas within Zones I and J of the EPZ.
    - (1) At Site Area Emergency, the State and counties can activate the Siren / EAS System to alert the public to listen to local radio and television stations for information and instructions related to current emergency activities in progress by those agencies. At this time, it is anticipated there would be no public protective action recommendations from the Harris Plant.
    - (2) At General Emergency, in support of public protective action recommendations and emergency actions agreed upon by governing agencies, the Siren / EAS System will be activated. The process will include the transmission of the appropriate instructional messages to the public living in affected areas of the emergency planning zone.

- (3) **SIRENS** will be sounded for four (4), three-minute periods for the initial notification. The four counties will coordinate and sound sirens concurrently, if possible.
  - (4) **EMERGENCY ALERT SYSTEM**, (EAS) must be activated THREE to FIVE minutes AFTER the activation of the SIREN system. This time lag will allow the general public to gain access to radio and television stations within the emergency broadcast area.
  - (5) Thereafter, the number of soundings will be at the judgment and discretion of the official responsible for activating the system.
  - (6) Additional activations will support escalating situations to provide affected populations with follow-up emergency instructions.
  - (7) Sirens may be sounded for other types of area emergencies with appropriate EAS messages.
9. **Siren Back-up Route Alerting:** County emergency response agencies are capable of providing alerting and notification of the public located inside the 10-mile Emergency Planning Zone should the primary alert and notification system fail at Site Area Emergency and/or General Emergency. Siren Back-up Route Alerting will not be conducted if there are NO known sirens out of service. (See Mobile / Alerting)
10. **Supplemental Route Alerting:** If areas of the 10 mile EPZ are not sufficiently covered by the primary notification methods then supplemental route alerting will be used to alert and notify the public. The method is the same as siren backup and Mobile/Route Alerting. These areas, if applicable, will be identified in the local county SOGs. Supplemental Route Alerting and Mobile/Route Alerting can be combined at a General Emergency.
11. **Secondary Notification.** Tone-alert radios, activated by the National Weather Service, will provide an automatic alarm signal along with the siren activation. The tone-alert weather radios will also broadcast limited emergency instruction to the public within the area 5 miles from the Harris Plant.
12. Area emergency response agencies will conduct a third level of notification and communication with the general public in the Emergency Planning Zone. These activities will be conducted at General Emergency.

- a. **Mobile / Route Alerting:** provides for the verification of the primary alert and notification system effectiveness at General Emergency, and the opportunity to provide supplemental warning on a zone by zone basis throughout the EPZ.
- b. Mobile / Route Alerting routes are pre-established and can be completed in about 45 minutes.
- c. Emergency Vehicles with flashing lights and effective sound devices (public address system and/or siren) will be dispatched along pre-assigned routes and will stop about each quarter (1/4) mile in populated areas and at each house or group of houses that are more than 1/4 mile apart. The following announcement will be made:

**ATTENTION. ATTENTION. AN EMERGENCY SITUATION HAS DEVELOPED IN THIS AREA THAT CAN AFFECT YOUR SAFETY. TURN ON YOUR RADIO OR TELEVISION FOR INFORMATION AND INSTRUCTIONS.**

- d. Mobile / Route Alerting Teams will be deployed once the fixed sirens have been activated.
  - e. To ensure receipt of the initial warning by members of the community, each route will be run twice.
  - f. The second run conducted on a given route in support of the additional public notification process could be run forward or backward with out a set time frame.
  - g. Second runs need only to stop at houses that are dark at night, or where it is apparent that people are not complying with EAS instructions.
  - h. If necessary, door-to-door alerting could be accomplished during the second run.
13. To avoid extreme apprehension and possible panic on the part of the public, it is imperative that the television and radio stations receive and transmit EAS messages and emergency news releases prepared by the County PIO. (See Part 1, Annex-D and E)

14. Organizations tasked with zone warning responsibilities in Section X, **FIGURE-5**, should identify within their zone, hearing impaired and special needs households to provide "knock on the door" type verification to support warning needs of these special groups of people.
15. Identification of these households may be secured through the special needs response card received from the annual mailing of the HNP Safety Information Brochure to 10-mile EPZ residents.

**C. ACCIDENT ASSESSMENT**

1. Lee County has limited capabilities and resources for assessing and monitoring actual or potential consequences of a radiological emergency within the plume exposure pathway, (10 Mile EPZ).
2. Assigned emergency response agency personnel have access to dosimeters and radiological monitoring equipment. They have been trained in monitoring of evacuees and emergency workers for contamination.
3. The lead or primary responsibility for accident assessment during the initial stages of the emergency will be borne by the Harris Plant supported by State, and county resources if they become available.
4. The NC Radiation Protection Section (RPS), as a member of the North Carolina SERT, will maintain timely communications with County EOC and the Harris Plant to assess the actual situation.
5. RPS will assume responsibility for the coordination, collection and assessment of field samples.
6. RPS / SERT members will provide timely consultation to county officials on any recommendations for protective response and/or distribution of potassium iodide (KI).
7. If an evacuation is ordered, the NC State Highway Patrol and Local Law Enforcement agencies will establish traffic control points and security roadblocks.
8. Fire and rescue departments will establish monitoring and decontamination stations for the general public and emergency workers. (See Section X, **FIGURE-6**, and **FIGURE-16**)
9. County response organizations, personnel and equipment for monitoring, decontamination and notification teams will be activated through the Lee County Emergency Management Office.



- a. Primary means of notification will be commercial telephone and pager.
- b. Radio will be the secondary means of notification and will be used for reporting back to the EOC.

**D. PUBLIC EDUCATION AND INFORMATION**

- 1. The Lee County Public Information Officer (PIO), or the authorized spokesperson, will represent Lee County in the preparation and release of emergency public information and instructions concerning a nuclear radiation incident at the Harris Plant.
- 2. Coordinating Instructions, Education and Information
  - a. Since knowledge of the potential duration of release and the time available before expected off-site exposures is important in determining specific public instructions, the radiation protection component of the Lee County EOC must make available to the public information staff data necessary to prepare bulletins and statements.
  - b. The PIO staff will coordinate public information activities between Lee County, the State, the other counties and Progress Energy Company.
  - c. Facilities for the County public information staff will be provided at the County EOC and the Joint Information Center, (JIC).
  - d. The PIO is responsible for the collection and release of information to the news media, verifying, resolving and reporting rumors to SERT, scheduling news briefings and preparation of news releases for distribution in Lee County.
- 3. Rumor Control –Recommend change to Citizen Information Unit
  - a. Rumor Control will be established in the Lee County EOC by announcing a special telephone number for use by the public to acquire information or express concerns.
  - b. Rumor Controllers will provide answers to questions with information pre-approved by Lee County Emergency Management, and/or information provided at previous or current press/news briefings.

- c. Questions not addressed by pre-approved, or previous or current press/news briefing information will be forwarded to the Lee County PIO for resolution.
  - d. The Lee County EOC could forward all rumor calls to the JIC for answers or resolution if the situation dictates.
4. Media Information
- (1) Lee County government will provide local news media an annual update on the status of plans to cope with off-site emergencies resulting from an incident at the Harris Plant. The public information staffs of Chatham, Harnett, Lee and Wake Counties, Progress Energy Company and SERT will prepare information packages and make them available to the media. An activity such as a Media Day may be used to disseminate these information packages.
  - (2) The Information package should include:
    - (a) Current status of the Off-Site and Plant emergency response plans.
    - (b) An orientation on radiation.
  - (3) Guidelines and points-of-contact to be used by the media in obtaining pertinent information.
5. Emergency Communications to the Media
- a. The three possible points-of-contact for media personnel to obtain current information during an emergency are:
    - (1) The Joint Information Center (JIC) located at the Progress Energy's Customer Service Center in Raleigh.
    - (2) SERT Public Information Officer at the State EOC, or current SERT location.
    - (3) Prior to the activation of SERT, the media can contact the State EOC in Raleigh, County EOCs in Chatham, Harnett, Lee, or Wake; and Progress Energy Company.
6. Emergency Communications to the Public
- a. The primary means of communications to the public are broadcast radio, Over-The-Air television, and Charter Cable. Numerous radio and television stations serve the area of Lee County within the 10-mile EPZ.

- b. The secondary means of communications to the public is the National Weather Service radio station.
  - c. A third level of communication with the public is Mobile / Route Alerting conducted by area emergency response agencies at General Emergency, about the time of the siren soundings.
  - d. Due to the national scope of satellite television and radio providers, information provision to these mediums are not supported by this plan.
  - e. Information and instructions transmitted to the public during periods of an emergency can refer to information published and distributed during non-emergency periods. Examples are:
    - (1) Geographical areas or political subdivisions of Lee County within the 10-mile radius of the Harris Plant.
    - (2) Travel routes
    - (3) Reception and care center locations should an evacuation be required.
    - (4) Educational information on radiation.
    - (5) Instructions on how the public will be alerted to and informed of a potential threat, or an actual emergency condition.
7. Concept of Operations for Public Information
- a. During normal, non-emergency-periods, the PIO will participate in exercises conducted by Lee County and CCPS. Prior to an exercise, the public information staff should inform the media as to the scope of the exercise.
  - b. The PIO will prepare and maintain on file in Lee County the following:
    - (1) Draft news releases concerning accidents at the Harris Plant that would require Lee County authorities to alert and warn the public. (See Part 1, Annex-D.)
    - (2) Educational materials explaining radiation, nuclear power plant operations, possible effects from radioactive releases and self-help methods of protection.
    - (3) Printed news releases, graphics for television and simple verbal directions for radio describing

evacuation routes, and reception and care center locations.

**Note:** Camera-ready newspaper copy, slides for television and simple verbal directions for radio of routes and shelter locations are maintained by the Department of Crime Control and Public Safety PIO.

- c. Upon notification of an emergency at the Harris Plant the Lee County PIO will:
  - d. Be prepared to report to the Lee County EOC or the Joint Information Center, when activated.
  - e. Immediately review and update prepared warning and evacuation information.
  - f. Review and update the educational materials for release to the news media during the emergency.
  - g. Brief the local news media representatives on the current situation and activities that are taking place within the county.
  - h. Establish contact with CCPS and provide County briefings, when requested.
  - i. Make recommendations to the County Commissioners and the Emergency Management Director concerning release of information to the public.
8. Following an emergency, the PIO will maintain contact with SERT-PIO and where deemed appropriate, support the state during Recovery, Reentry and Post Accident Operations.

**E. PROTECTIVE RESPONSE**

- 1. During the initial hours of an emergency, prior to State assumption of command and control, Harris Plant personnel will recommend protective actions to Lee County.
- 2. Lee County will participate in discussions and decisions for public protective response actions with the other counties. Wake County will coordinate the discussions.

3. Once command and control is assumed by SERT, the State is responsible for coordinating discussions and decisions for public protective response actions with the counties based on Harris Plant recommendations. (See Section X, **FIGURE-15**)
4. Until SERT assumes control, the Chairman of the Board of County Commissioners or designee will take the final responsibility for ordering evacuation.
5. Initially, the telecommunicator / dispatcher will make every effort to contact the Lee County Emergency Management Director or designee, the County Manager or designee, or the Chairman of the County Commissioners. If after a reasonable amount of time (about 5 minutes), the telecommunicator is unable to contact the required persons, protective action recommendations for the public provided by the Harris Plant will be followed.
6. If conditions warrant immediate activation of alerting guidelines, the telecommunicator will follow the recommendations for public protective actions provided by the representative from the Harris Plant.
7. Protective actions for the public and emergency workers will be based on recommendations of the US Environmental Protection Agency (EPA) found in EPA 400 R-92-001, the US Department of Health and Human Services, and the Federal Food and Drug Administration (FDA) regarding human food and animal feed. These protective actions may include:
  - a. Evacuation of all, or segments of, the emergency planning zone population from Lee County.
  - b. Activation of evacuation routes, reception and care centers, monitoring and decontamination points, and hospitals; (See Section X, **FIGURE-6**, and **FIGURE-16**)
  - c. Advising the public to stay indoors where determined necessary.
  - d. Administration of potassium iodide (KI) tablets as a thyroid-blocking agent to emergency workers, institutionalized persons, and the general public within the plume exposure pathway.
  - e. Establishing control of water supply intake.

- f. Providing for the diversion, embargo, or destruction of agricultural products.
  - g. Recommendations for respiratory protection.
  - h. Other appropriate actions could be to provide notices such as advising the public to wash homegrown products prior to consumption.
8. Protective Actions for Nursing Home Patients
- a. Evacuation is the preferred action during an emergency, however, the immobility of nursing home patients may preclude the use of this protective action. If so, Shelter-in-Place actions will be accomplished. These protective actions will be accomplished:
    - (1) Close windows and doors.
    - (2) Discontinue use of all equipment that can move or allow air in from outside (air conditioners, fireplace or bathroom fans, etc.).
    - (3) Stay indoors and relocate to an interior or basement area in the building.
    - (4) Tune radio or tv to local stations for emergency information.
    - (5) After consultation with the State Health Director or designee, and/or the County Health director, administer KI as a blocking agent. (See Part 1, Annex K.)
  - b. Current lists of nursing home within the EPZ are identified in Section X, **FIGURE-22**.
9. Distribution and Administration of Radiological Protective Drugs (see Annex K for guidance):
- a. The County Health Director is responsible for the storage, distribution, and authorizing the administration of Radiological Protective Drugs, Potassium Iodide (KI).
  - b. In some cases KI may be pre-distributed to field command posts, staging areas, general public or specific agency locations, i.e., fire, police or rescue departments or nursing care facilities, well in advance of any plant emergency.
  - c. The County Health Director, after consultation, or reasonable efforts to consult with the State Health Director or the senior

RPS representative, is empowered to authorize the Distribution of KI to emergency workers and the institutionalized persons, and the general public (if needed) if thyroid exposure is suspected, projected, or confirmed from the possible inhalation or ingestion of radioiodine.

- d. If the above conditions exist, KI will be transported to the field command post, staging areas and/or agencies for distribution, if not already distributed. Distribution could be implemented at or about Site Area Emergency.
  - e. The County Health Director, after consultation, or reasonable efforts to consult with the State Health Director or the senior RPS representative, is empowered to authorize the Administration of KI to emergency workers and the institutionalized persons, and the general public if thyroid exposure is suspected, projected, or confirmed from inhalation or ingestion of radioiodine. (Reference Section X, **FIGURE-9**)
  - f. KI should be administered to Emergency Workers anytime there is evidence they may be exposed to atmospheric releases of radiation that contains iodine, without reference to levels.
  - g. KI should be administered to Emergency Workers before they are exposed to atmospheric releases of radiation containing iodine, when possible.
  - h. The field command posts and staging areas for emergency workers will be determined by the emergency situation and designated by the County EOC.
10. Transportation for Evacuation:
- a. General
    - (1) Primary means of transportation will be private vehicles.
    - (2) News releases will urge the sharing of rides with persons without transportation.
    - (3) The County will provide transportation for evacuees that are with out means to exit the EPZ during a mandatory evacuation.
    - (4) The guidelines for accessing County transportation will be publicized in appropriate News Releases.

11. Special Facility Population
- a. Section X, **FIGURE-22** contains a current list of Special Facilities and Populations that may need additional support during an emergency evacuation. (Not all counties will need to address all identified possibilities.) In some cases sheltering-in-place may be employed as an alternative to evacuation.
  - b. Schools: - Students attending classes inside the EPZ will be relocated to a pre-designated relocation school outside the 10-mile by county school buses. These pairings are publicized in the HNP Safety Information Brochure and will be repeated during appropriate News Releases.
  - c. Hospital: - Where practical, medical facilities inside the EPZ will be evacuated utilizing emergency medical vehicles for non-ambulatory patients and available buses or vans for ambulatory patients.
  - d. Nursing Homes and Family Care Facilities: - Where practical, nursing and family care facilities inside the EPZ will be evacuated utilizing emergency medical vehicles for non-ambulatory patients and available buses or vans for ambulatory patients.
  - e. Mobility-Impaired: - Persons within the EPZ will be pre-identified, as is reasonably possible and provided special transportation as required.
  - f. The Emergency Management Director for those persons identified within the EPZ requiring transportation assistance will maintain a telephone listing by name and address.
  - g. The listing may include a consolidation of the special needs response cards received from the annual mailing of the HNP Safety Information Brochure and current Progress Energy listing of system customers on life support equipment.
  - h. The listing may be augmented with information provided by rescue squads, fire departments, social service agencies and health care providers.
  - i. Child Care: – At these facilities, children will be picked up by parents during early stages in the emergency or relocated



(Children and Staff) to a Relocation School. (See Section X, **FIGURE-22**)

- j. Transportation assistance could be required to relocate the children and staff from Child Care facilities; this activity will be coordinated through the County EOC.

12. Evacuation Routes

- a. The North Carolina State Highway Patrol assisted by County Sheriff's Department will control access to evacuation routes.
- b. The NC State Department of Transportation will clear evacuation routes of any impediments such as snow, ice, debris, or equipment.
- c. The NC State Department of Transportation will be responsible for posting and maintaining evacuation route signs.
- d. Time estimates for evacuation of Zones I and J in Lee County are shown in Section X, **FIGURE-17**.
- e. The following major highways and secondary roads within the county portion of the 10-mile EPZ are designated as primary evacuation routes. Major highways have a projected traffic capacity under emergency conditions as shown:
  - (1) US 1 and NC 42 are capable of handling 1500 vehicles per hour.
  - (2) Secondary roads identified on the operations map are capable of handling 1000 vehicles per hour per lane.

- 13. Precautionary closing and evacuation of schools, recreation sites and other facilities where persons may congregate will be considered.

**F. RADIOLOGICAL EXPOSURE CONTROL**

- 1. Prior to the assumption of command and control by the State, the Lee County Emergency Management Office and Progress Energy Company are the two primary organizations responsible for insuring that radiation doses received by the public and emergency workers are below the normally acceptable maximum levels.
  - a. The EPA recommended Protective Action Guides (PAGs) would be used as the maximum acceptable levels of

radiation for the public and emergency workers during an emergency. These levels are specified in Section X, **FIGURE-9**, Page-1.

- b. Whenever possible, emergency workers will be removed from a threatened area as soon as possible.
2. The County Board of Commissioners has the decision-making authority for operations. A representative from Progress Energy Company is responsible for making recommendations to the Commissioners concerning the use of the protective response options specified in Section X, **FIGURE-9**, Page-1.
  3. Lee County Emergency Management Office will support emergency response efforts by issuing instruments to those fire and rescue workers who do not already have them.
  4. Emergency workers have been trained in the use of the following equipment:
    - S.E. International, Inspector EXP survey meter
    - Ludlum Model 52, Portable Portal Monitor
    - Thermoluminescent Dosimeters (TLD)
    - Mid-range dosimeters (0-20R)
    - CDV-750, dosimeter charger
    - CDV-750, Model 6, dosimeter charger
    - Portable Decontamination Shower Units
    - Potassium Iodide
- a. In the event of an emergency, Lee County EOC will distribute available dosimeters and TLDs to any Lee County emergency workers who may be subject to significant radiation exposure.
  - b. Dosimeters and TLD's may be pre-distributed, depending on agency assignment and deployment location.
  - c. Any radiological equipment stored at the Lee County Emergency Operations Center will be transported to the reception center and emergency worker stations for distribution to the emergency workers.
  - d. RPS will be responsible for assuring that TLDs are read and analyzed, and will monitor the dosage levels to make appropriate health and safety recommendations. (See Part-1, Section-IV.G.)

**North Carolina Radiological Emergency Response Plan  
Part 2, Section 2, LEE COUNTY PLAN  
January 2008**

- e. Representatives of the Lee County Health Department and of Progress Energy Company will assist by analyzing the dosage level reports for the TLDs and make appropriate recommendation concerning the health of the individuals.
  - f. County Emergency Management Department personnel will coordinate collecting information and ensuring measurement readings are shared with a representative from Progress Energy, and that dosage levels shown on the TLD reports are acted upon within guidelines.
  - g. Dosimetry records will be made available to the involved personnel and employing organizations.
5. During the course of the emergency, radiation dose levels and other exposure records will be reviewed by County EOC personnel, NC Radiation Protection Section and/or Progress Energy Company to formulate recommendations for the Lee County Board of Commissioners and to assure that workers' exposure remains below EPA recommended Protective Action Guides.
6. Communications will be maintained between the Lee County EOC and the appropriate authority at the Harris Plant to assure that exposure levels of Lee County emergency workers moving on and off the plant site are below recommended PAGs.
7. The policy under this plan is to prevent emergency workers from receiving a radiation dose in excess of the stated PAGs. The County Director, representatives from the Harris Plant and RPS may recommend to the Lee County Board of Commissioners that emergency workers be allowed to exceed the PAGs if workers cannot be rotated and the activities involved are critical to public protection.
- a. The senior elected official has final approval authority to exceed PAGs. Permission to exceed 25 rem TEDE will only be granted to those who volunteer for a special mission.
  - b. Volunteers must be fully informed of the potential health consequences and risks prior to undertaking any special mission.
8. The volunteer fire and city fire departments have the responsibility for coordination of monitoring and decontamination stations. This could require the collection and control of radiological contaminated

material. Additional support can be obtained from the Progress Energy Company and Radiation Protection Section, (RPS).

9. Monitoring and Decontamination:
  - a. When an Evacuee or Emergency Worker monitoring point or location detects contamination readings greater than 300 CPM, the monitoring point will take the following actions:
    - (1) Notify the Lee County Emergency Management Director in the EOC, who will forward this information to SERT.
    - (2) Assist in decontamination of people and equipment.
    - (3) Collect and contain any contaminated material.
  - b. Field monitoring team data collected during the initial hours of an emergency will be transmitted or delivered to the Lee County Emergency Management Office for review. Progress Energy Company will assist in the interpretation of this data. The data will be verified by RPS.
  - c. RPS and/or the Harris Plant will monitor the environment in accordance with established guidelines.
  - d. When decontamination is to be conducted, a representative from the Harris Plant Radiation Protection/HEEC Radiological Services Unit or from SERT/RPS may be dispatched to the scene to observe the decontamination process, and any collection and containment activities.

**G. RECOVERY, REENTRY AND POST-ACCIDENT OPERATIONS**

1. The problems involved in reentry and recovery operations are in direct proportion to the amount of radioactive contamination received and remaining. The North Carolina RPS will be the lead agency in the collection and analysis of environmental samples, air, foliage, and water samples. Qualified personnel from the Harris Plant will assist RPS.
2. Analysis findings will be submitted to the Director of RPS who will forward the findings with his recommendations to the SERT leader. This information will then be submitted to the highest elected official of the government concerned with a recommendation for additional evacuation, return, reentry or for continued evacuation of the area.

3. The senior elected official of the area concerned will make reentry authorization. Emergency service organizations will be immediately informed and the SERT-PIO, in coordination with the Lee County PIO/JIC, will release the announcement to the news media with any additional instructions or information as appropriate.
4. Recovery and post-accident operations will continue as long as required after a return is authorized. These actions will include:
  - a. Decontamination of people, animals, property, food and water.
  - b. Continue security of public and private property, including unauthorized entry into contaminated areas.
  - c. Health and medical services for evacuees.
  - d. Continue monitoring of people and property, including long-term monitoring.
  - e. Proper radioactive waste containment and disposal.
5. The Lee County EOC will coordinate local support during the reentry and recovery phase.

**VII. SUPPORT RESOURCES, GUIDELINES, FACILITIES and EQUIPMENT**

**A. EMERGENCY RESPONSE SUPPORT and RESOURCES**

1. Resources and support assistance from sources external to State government and Lee County may be required to conduct emergency operations within the EPZ. To assure that these resources are committed in an efficient and effective manner, Lee County may dispatch a representative to the Harris Plant Emergency Operations Facility (EOF).
2. Lee County Emergency Management Agency has designated representatives to provide technical advice to the EOC and the Board of County Commissioners.
3. Lee County Emergency Management may deploy a representative to the State to serve with the SERT in coordination of county and state activities.
4. The Chairman of the Lee County Board of Commissioners will prescribe procedures for control and allocation of resources required to support emergency operations within Lee County.

5. The Lee County Emergency Management Office maintains a resource manual containing the identification and location for procurement of resources.
6. Coordinating Instructions, Emergency Response Resources
  - a. Requisitions for personnel, supplies and equipment during an emergency will be directed to the Emergency Management Director at the County EOC.
  - b. The types and quantities of resources committed by county departments during an emergency are to be reported to the Emergency Management Director at the County EOC.
  - c. Local resources to support Federal response will be made available to the extent possible.
  - d. Federal support will be coordinated through the appropriate County and State agencies.

**B. MEDICAL AND PUBLIC HEALTH SUPPORT**

1. Most hospitals in the State have limited capability to evaluate radiation exposure and radioactive material intake. These limitations are adequately compensated for by agreements with private companies to provide whole body counting equipment and with laboratory analysis from medical institutions, the Federal government and private commercial laboratories. (See Part-1, Section-V. B.)
2. The local Hospitals listed in Section X, **FIGURE-23** can provide treatment or medical support for radiation accident victims. These hospitals are capable of treating contaminated injured patients. Rex Hospital has additional capability to treat severe radiation exposure cases.
3. The Emergency Medical Services (EMS) EOC Representative, is responsible for developing plans to marshal ambulance and rescue resources, and for coordinating emergency medical services at care centers, and for reception and emergency worker radiation monitoring and decontamination stations.
4. The EMS EOC Representative will determine the availability of county resources before requesting additional resources from the State.

5. The EMS EOC Representative will coordinate with County Emergency Management and North Carolina Office of Emergency Medical Services for additional ambulance resources.
6. In the event of an incident at the Harris Plant, the EMS EOC Representative, Lee County will receive advisement from the State EOC regarding protective action recommendations. This information will be provided to the response agencies, to include the medical facilities to be evacuated and those capable of receiving contaminated patients.
7. If the number of EMS and rescue resources exceeds Lee County's capability, the EMS EOC Representative will request assistance from SERT.
8. At the staging areas or deployment locations, EMS personnel will be issued dosimeters, briefed on the nature and extent of the accident, and assigned missions.

**C. EMERGENCY FACILITIES and EQUIPMENT**

1. Lee County government conducts emergency direction and control functions from the Lee County Emergency Operations Center located in the basement of the Sanford Municipal Center in Sanford, North Carolina.
2. The decision to activate the County EOC will be made by the Emergency Management Agency Director, or designee.
3. The Lee County EOC and the communications center are equipped with an emergency power generator, eating and sleeping quarters, and other necessities required for continuous operation.
4. The Lee County EOC is equipped with commercial and dedicated communication equipment. The following systems are available in the County EOC: commercial telephone; fax machines; dedicated computer lines, two-way radio; a dedicated Selective Signaling telephone line, and a decision telephone line between the Harris Plant, the State EOC, and Wake, Lee Harnett and Chatham counties. A computerized statewide data transmission system is also available in the facility.
5. The time required from notification of EOC staff to establishment of direction and control, under varying conditions, is shown in Section X, **FIGURE-7**.

6. The Lee County Emergency Management Agency will provide radiological monitoring equipment and personnel. The County Emergency Management Director maintains a listing of the trained personnel within the County.
  - a. The inventory and distribution of radiological monitoring equipment is maintained by Lee County Emergency Management Agency.
  - b. Radiological Monitoring Equipment issued is inventoried annually. Equipment issued to support agencies is subject to periodic operational checks, and after each use.
  - c. Operational checks are performed in accordance with manufacturers recommendations and/or federal and State requirements.
  - d. The inventory and distribution of radiological monitoring equipment are shown in Section X, **FIGURE-11**.

### **VIII. EMERGENCY COMMUNICATIONS**

#### **A. COMMUNICATION NETWORKS:**

Provisions have been made for communications networks to support emergency response organizations throughout the course of an emergency. The networks are the Selective Signaling System, commercial telephone service, Progress Energy Company radio systems; local government emergency services two-way radio systems, facsimile machines, computer messaging, amateur radio network, and State and Federal government communications.

#### **B. FACILITIES STAFFED 24 HOURS per DAY:**

To assure that an immediate level of alert and notification readiness is available, the following emergency response facilities are staffed 24 hours a day:

1. The Harris Plant Control Room.
2. The NCEM Emergency Operations Center, located at the Administration Building in Raleigh, N.C. and the State Warning Point located at the Highway Patrol Communications Center in Raleigh, N.C.
3. The Lee County Warning Point, located at the Sanford Communications Center (Police Department), Sanford, NC.



4. The National Weather Service Forecast Office in Raleigh.
5. The North Carolina Department of Crime Control and Public Safety, Division of Emergency Management.

**C. FACILITIES NOT STAFFED 24 HOURS per DAY:**

1. The following principal emergency response organizations are not staffed 24 hours a day, but are required to have response personnel on call.
2. Lee County Emergency Operations Center (EOC)
3. Lee County Emergency Management Office
4. The Radiation Protection Section, Department of Environment and Natural Resources.

**D. COMMUNICATIONS BETWEEN RESPONSE ORGANIZATIONS**

1. The Progress Energy's Selective Signaling System is the primary means of communication between Chatham, Harnett, Lee, and Wake Counties, the State and the Harris Plant for information relating to an emergency at the plant. The back up to this system is the commercial telephone.
2. The Decision Line, a dedicated commercial telephone line will function as the primary method of communications for state and local decision makers to concur upon actions to protect the public and emergency workers. A telephone conference call capability will be utilized as a backup, with the call being initiated by the North Carolina Division of Emergency Management.
3. The State Emergency Management radio network is the primary two-way radio communication link with contiguous local governments.
4. Satellite phone links are available throughout the State and County agencies. Talk groups have been established to communicate to various organizations as a "conference call" setup.
5. A statewide computerized data transmission system is available. It provides communication via modem to coordinate needs and communicate changing conditions in the field.

6. The Division of Criminal Information (DCI), with terminals located in the County Warning Point, contiguous local governments and the State EOC can be used for emergency communications between these points and Lee County.
7. The State rescue radio frequency can also be used for emergency communications with contiguous local governments.
8. Communications paths for alerting Lee County emergency response personnel are specified in Section X, **FIGURE-8**.

**E. COMMUNICATIONS BETWEEN PROGRESS ENERGY COMPANY, the STATE of NORTH CAROLINA and LEE COUNTY**

1. The primary means of communications between the Harris Plant, State Warning Point or Emergency Operations Center, State EOC (SEOC), Lee County Warning Point and Lee County EOC is the Progress Energy Selective Signaling System.
2. Back-up communications between off site authorities will be commercial telephone, two-way radio systems, fax machines and computer messaging.
3. Communications can be improved by expanding the existing radio systems now operated by Progress Energy Company, the North Carolina Division of Emergency Management and the Lee County Emergency Management Agency.
4. System expansion may include the addition of temporary base stations, mobile units and hand-carried portable units.

**F. EMERGENCY MEDICAL SERVICES COMMUNICATIONS**

1. EMS vehicles can communicate with each other and with contiguous counties and hospitals.
2. Area Hospital can communicate with supporting hospitals and contiguous counties, and contracted emergency medical services.

**G. RADIOLOGICAL MONITORING and DECONTAMINATION COMMUNICATIONS**

1. Information from the field will be transmitted via Lee County Fire Department frequency or satellite phone. The County Sheriff's Department frequency will be the secondary means for transmission of information.

2. Information from reception centers will be transmitted via commercial telephone, two-way radio, or amateur radio network.
3. Information on radiological monitoring from SERT will be transmitted via commercial telephone, satellite phone and/or computer messaging to the Lee County EOC.

**H. PERIODIC COMMUNICATIONS TESTS**

1. Lee County's emergency management radios and satellite phones are utilized constantly. Therefore, testing is a continuous process.
2. Communications with the State will be tested monthly.
3. Communications between County EOC, State EOC and field assessment teams may be tested annually.
4. See Part-1, Section-VI, for testing of State and Federal communications links.

**I. COMMUNICATIONS TO THE PUBLIC**

1. Primary means is the Emergency Alert System (EAS), broadcast via radio, television and National Weather Service (NWS) weather radios.
2. Secondary means is by National Weather Service Office in Raleigh via NWS weather radios.
3. An additional means of communication with the EPZ public is Mobile / Route Alerting conducted by the local fire departments.
4. The combinations of the above are adequate to provide emergency communications to 100 percent of the public in the 10-mile EPZ.

**J. LEE COUNTY EMERGENCY COMMUNICATIONS SYSTEMS**

A current list of Lee County Communications Systems users is on file in the Emergency Management Agency and the Lee County Communications Center. (See Section X, **FIGURE-8**)

**K. READINESS CAPABILITIES**

The Sanford Police Department Communications Center is the central point for communications during an emergency. This includes communications with established field activities i.e. reception centers, emergency worker stations, traffic control points, etc.

**L. ADDITIONAL BACK-UP COMMUNICATION**

1. Amateur Radio Operators will provide communication at the EOC and care centers.
2. In an extreme emergency, a Sanford Police Department patrol car may transport hard-copy messages.
3. The EOC-reception and care center emergency communications link, commercial telephone, will be supplemented by amateur radio support, or by positioning a radio-equipped law enforcement vehicle at each location.

**IX. PLANS, TRAINING, DRILLS and EXERCISES**

**A. RESPONSIBILITY for PLANNING and PERIODIC REVIEW**

1. The Lee County Emergency Management Director is the emergency planning coordinator for the County.
2. The Emergency Management Director will:
  - a. Participate in training personnel for emergency response when available.
  - b. Updating or verifying as current the County Radiological Emergency Response Plan on an annual basis, and assure proper distribution of changes.
  - c. Review and/or update supporting agreements for the plan on a pre-established cycle.
  - d. Ensure local agencies/organizations that are assigned responsibilities in the plan, maintain appropriate written emergency operating guidelines.
  - e. Ensure corrective action identified as a result actual events, drills, exercises and annual reviews are coordinated with the affected agencies. Assure realistic revision dates are established and followed up on to maintain the plan in a current state.
  - f. Ensure the plan and supporting guidelines are reviewed, updated, and certified current. Any update will take into account the need for changes identified by actual events, drills and exercises.

- g. Ensure emergency telephone numbers in the plan and supporting documents are maintained in a current status.
- h. Ensure the plan contains a detailed listing of supporting plans/guidelines and their sources. (See Section X, FIGURE-13, List of Supporting Plans and Sources)

**B. RADIOLOGICAL EMERGENCY RESPONSE TRAINING**

- 1. A training program for instructing and qualifying personnel who will implement the response plan for Lee County will include the following personnel: (See Section X, **FIGURE-10**)
  - a. Lee County Emergency Management Director.
  - b. Accident assessment and damage control personnel.
  - c. Law enforcement, fire, rescue and medical support personnel.
  - d. Personnel and dispatchers responsible for receiving and issuing emergency information and instructions.
- 2. Initial training and retraining of personnel will be offered annually. Progress Energy Company and State personnel will provide training assistance.
- 3. Included in this training will be:
  - a. Process for the notification of the county and support agencies.
  - b. Basic radiation health effects and radiation protection information.
  - c. Expected roles in support of radiological emergency response plans for Lee County and the Harris Nuclear Plant.
  - d. The training program established to instruct and qualify county response organizations is based on material from Fundamental Course for Radiological Monitors (FCRM), and other related training documents.
  - e. The Emergency Management Agency Director and the County Radiological Emergency Response Plan will determine the level of training for each response organization.

- f. For those local support organizations who will enter the Harris Plant site, training shall also include site access procedures and on-site control procedures
  - (1) Harris Plant will provide training at their station or at the plant.
  - (2) Initial training and retraining of personnel will be offered annually.
- g. Basic radiological training can be provided at the time of the emergency for special response or support organizations. (Train at the Time of the Emergency)
- h. Specific operations training and updates, as determined by the Lee County Emergency Management Director, may only include information pertaining to the specific course of action, equipment operation, or other specific and individualized skill and may exclude provisions a., b. and d.

**C. DRILLS**

- 1. Periodic communications drills will be conducted with Chatham, Harnett, Lee, and Wake Counties, the State EOC, and the Harris Plant, via Progress Energy's Selective Signaling System.
- 2. Annual communications drills may be conducted between Lee County EOC, the State EOC, the Harris Plant and the State field assessment teams.
- 3. A medical emergency drill involving simulated transportation and treatment of radiological contaminated patients will be conducted in accordance with FEMA guidance
- 4. Radiological monitoring drills will be conducted in conjunction with the refresher training.
- 5. Qualified observers will evaluate drills as required.
- 6. Tabletop exercises and emergency operations simulations will be conducted as needed.

**D. EXERCISES**

- 1. Exercises will be conducted every two years under authority of Federal Regulation 44 CFR 350. The scenario will vary to insure that all major elements of response are tested within a six-year period.

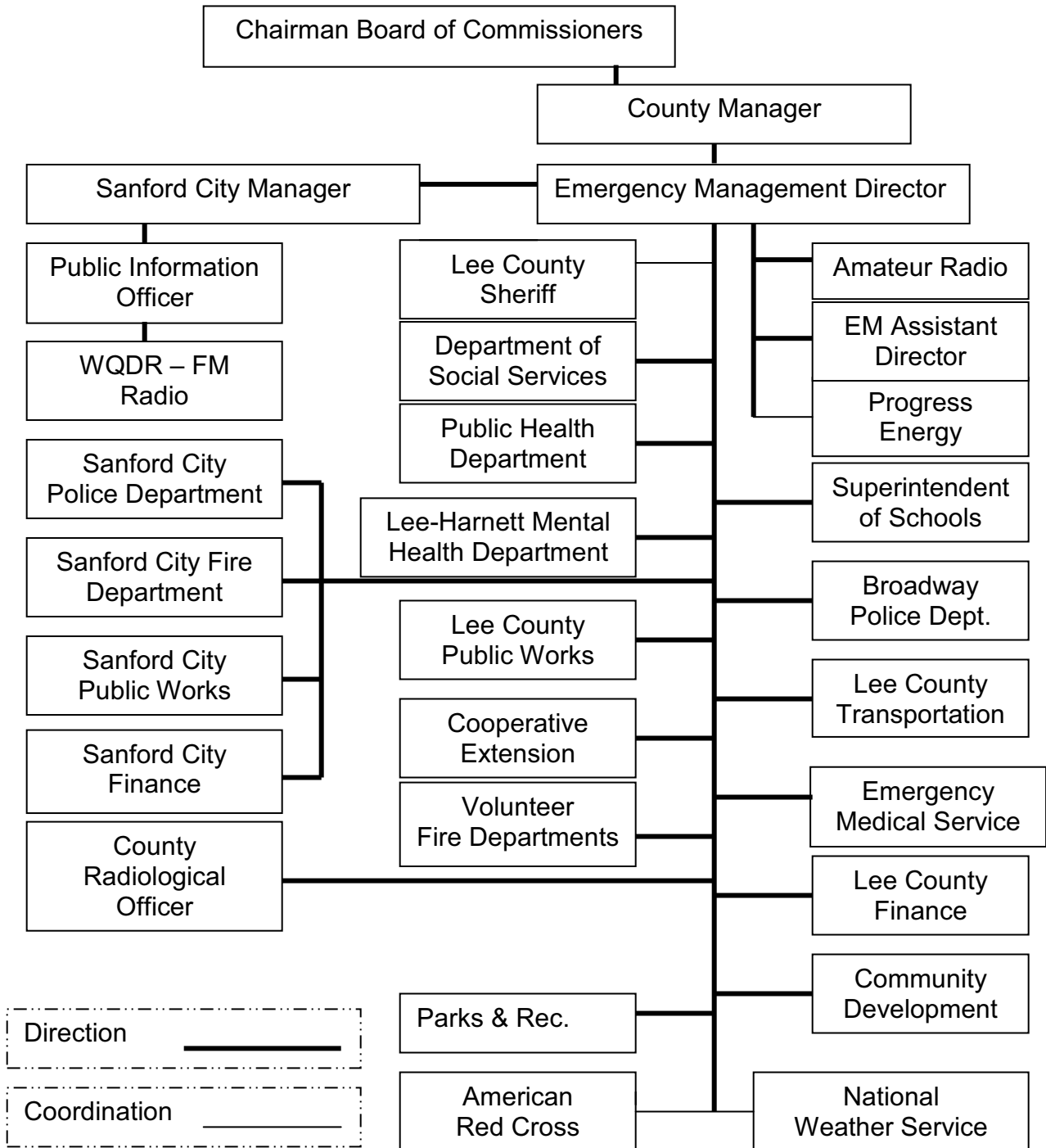
2. There will be varied starting times for exercises to assure that at least one exercise will begin between 6 p.m. and 4 a.m. every six years.
3. Some exercises will be conducted during adverse weather conditions, and unannounced.
4. The scenario for each exercise will include:
  - a. An off-site release or potential to assure response by Lee County Emergency Management Agency.
  - b. The exercise objectives, evaluation criteria and a narrative summary.
  - c. Dates, times and a list of participating organizations.
  - d. Simulated events and a time schedule for real and simulated activities.
  - e. A description of activities, advanced materials, and a written Extent of Play will be provided to Evaluators, Controllers, and official observers before the exercise date.
5. Evaluation and Critique
  - a. Federal Evaluators, State and local qualified observers, will hold a critique after the exercise.
  - b. Participating organizations will modify their readiness capabilities as required based on exercise evaluation.

**X. FIGURES**

**This Page Intentionally Left Blank**



**LEE COUNTY ORGANIZATIONAL CHART**



**FIGURE-1**

**This Page Intentionally Left Blank**

**North Carolina Radiological Emergency Response Plan  
Part 2, Section 2, LEE COUNTY PLAN  
January 2008**

<b>PRIMARY AND SUPPORT RESPONSIBILITY SUMMARY</b>			
<b>FUNCTION</b>	<b>ORGANIZATION</b>	<b>PRIMARY</b>	<b>SUPPORT</b>
Command and Control	-Lee County Emergency Management -Lee County Commissioners	X X	
Warning	-Sanford Communications Center (Siren Activation) -National Weather Service -Radio and Television -Volunteer Fire Departments -Lee County Sheriff's Department	X	X X X X
Notification and Communications	-Sanford Communications Center (Siren Activation) -National Weather Service -Radio and Television -Independent Telephone Company -Progress Energy	X	X X X X
Public Information	-Lee County Public Information Officer (PIO) -Progress Energy -Radio & Television -National Weather Service -Local News Media	X	X X X X
Local Law Enforcement	-Lee County Sheriff's Department -Sanford Police Department -Broadway Police Department	X X	X
Transportation	-Lee County Schools -EMS -Lee County Transportation	X	X X
Accident Assessment	-Progress Energy -Lee County Emergency Management -County Cooperative Extension Agent -NC-Department Radiation Protection	X X X	X X
Public Health and Sanitation	-Lee County Health Dept -Lee County Public Works Department	X	X

**FIGURE-2**

Page 1 of 3

**North Carolina Radiological Emergency Response Plan  
Part 2, Section 2, LEE COUNTY PLAN  
January 2008**

<b>PRIMARY AND SUPPORT RESPONSIBILITY SUMMARY</b>			
<b>FUNCTION</b>	<b>ORGANIZATION</b>	<b>PRIMARY</b>	<b>SUPPORT</b>
Social Services Shelter, Mass Feeding and Clothing	-Lee County Red Cross	X	
	-Lee County Dept. of Social Services	X	
	-Lee County Schools		X
	-Lee-Harnett County Mental Health		X
	-Lee County Emergency Management		X
	-Lee County EMS		X
	-Municipal Police		X
	-Sanford Fire Department		X
	-Lee County VFD		X
Rescue	-Lee County Fire Department and Specialized Rescue Teams (SRT)	X	
Traffic Control	-Lee Co Sheriff Department	X	
	-Sanford Police Department		X
	-Broadway Police Department		X
	-NC-State Highway Patrol	X	
Emergency Medical	-Central Carolina Advanced Life Support	X	
Protective Response	-Lee County Emergency Management	X	X
	-Progress Energy		
	-Lee County Schools		X
	-Sanford Fire Department		X
	-Lee County VFD		X
	-Cooperative Extension Service		X
	-EMS		X
	-Radio and Television		X
	-Lee County Health Department		X
-Lee County Public Works			
Radiological Exposure Control	-Lee County Emergency Management	X	X
	-Lee County Sheriff's Dept.		X
	-Sanford Fire Dept.		X
	-Lee County VFD		X
	-Cooperative Extension Service		X
	-EMS		X
	-Lee County Health Department		X

**NOTE:** The responsibilities identified cover mainly County plan responsibilities. The majority of Federal, State and private organizations primary and support responsibilities are listed in Part 1, Figure 4.

**FIGURE-2**

Page 2 of 3

<b>PRIMARY and SUPPORT RESPONSIBILITY SUMMARY</b>	
The basic governmental units and responsible individuals for Lee County are:	
<b>GOVERNMENT UNIT</b>	<b>TITLE of KEY INDIVIDUAL</b>
Lee County Board of Commissioners Administration County Emergency Management Social Services Health Department Fire Departments City of Sanford Public Works Department Lee County Cooperative Extension Service Lee County Schools Mental Health Emergency Communications Town of Broadway	Chairman -Manager -Director -Director -Director -Chiefs -Mayor -Director -Director -Superintendent -Director -Supervisor -Mayor

**FIGURE-2**

Page 3 of 3

**This Page Intentionally Left Blank**

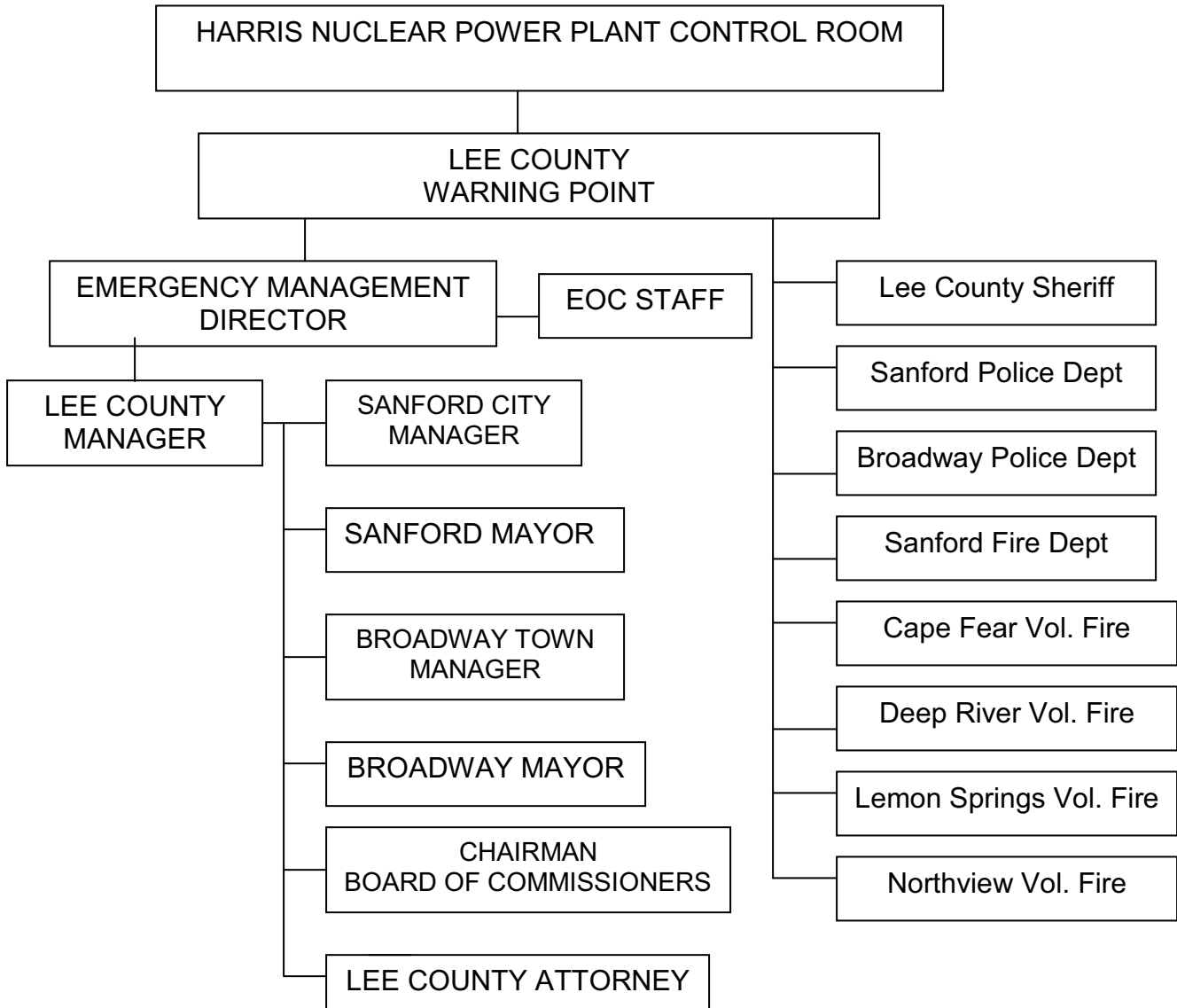
<b>EMERGENCY CLASSIFICATION and PROTECTIVE RESPONSE ACTIONS</b>	
<b>EMERGENCY CLASSIFICATION</b>	<b>PROTECTIVE RESPONSE ACTIONS</b>
<p style="text-align: center;"><b>UNUSUAL EVENT</b></p> <p>Events are in process or have occurred which indicate a potential degradation of the level of safety of the plant or indicate a security threat to facility protection. No releases of radioactive material requiring offsite response or monitoring are expected unless further degradation of safety systems occurs.</p>	<ol style="list-style-type: none"> <li>1. Notify persons on Key Alert List as appropriate.</li> <li>2. Stand by until EAL degrades or escalate.</li> </ol>
<p style="text-align: center;"><b>ALERT</b></p> <p>Events are in process or have occurred which involve an actual or potential substantial degradation of the level of safety of the plant or a security event that involves probable life threatening risk to site personnel or damage to site equipment because of intentional malicious dedicated efforts of a hostile act. Any releases are expected to be limited to small fractions of the EPA Protective Action Guideline exposure levels</p>	<ol style="list-style-type: none"> <li>1. Notify persons on Key Alert Lists.</li> <li>2. Activate EOC as appropriate; alert key emergency personnel to standby status.</li> <li>3. Maintain status until closeout, or escalation to a more severe emergency class.</li> </ol>
<p style="text-align: center;"><b>SITE AREA EMERGENCY</b></p> <p>Events are in process or have occurred which involve an actual or likely major failures of plant functions needed for protection of the public or security events that result in intentional damage or malicious acts; (1) toward site personnel or equipment that could lead to the likely failure of or; (2) prevents effective access to equipment needed for the protection of the public. Any releases are not expected to result in exposure levels which exceed EPA Protective action Guideline exposure levels beyond the site boundary.</p>	<ol style="list-style-type: none"> <li>1. Notify key persons on Key Alert Lists.</li> <li>2. Activate siren system, EAS, tone alert radios and provide public information.</li> <li>3. Assemble personnel for Siren Back-up and, mobile / route alerting.</li> <li>4. Fully activate County EOC.</li> <li>5. Alert personnel to standby for possible evacuation.</li> <li>6. Maintain status until closeout, reduction of class or escalation to a more severe emergency class.</li> </ol>
<p style="text-align: center;"><b>GENERAL EMERGENCY</b></p> <p>Events are in process or have occurred which involve actual or imminent substantial core degradation or melting with potential for loss of containment integrity or security events that result in an actual loss of physical control of the facility. Releases can be reasonably expected to exceed EPA Protective Action Guideline exposure levels offsite for more than the immediate site area.</p>	<ol style="list-style-type: none"> <li>1. Activate siren system, EAS, tone alert radios and mobile / route alert warning systems.</li> <li>2. Consider sheltering and/or evacuating based on the protective action recommendations.</li> <li>3. Maintain close status of the event until termination/closeout.</li> </ol>

**FIGURE-3**

**This Page Intentionally Left Blank**



**LEE COUNTY KEY ALERT NOTIFICATION CHART**



Emergency action level messages for an **Alert, Site Area Emergency, or General Emergency** will be relayed to each office or agency noted on the Key Alert List. The Notification of an **Unusual Event** to persons or agencies on the Key Alert List is at the discretion of Lee County. Telephone will be the primary means of transmitting this information.

**FIGURE-4**

**This Page Intentionally Left Blank**

## MOBILE / ROUTE ALERTING and NOTIFICATION LIST

### INDIVIDUAL FIRE DEPARTMENTS WILL COMPLETE ROUTE ALERTING FOR ALL ROUTES ASSIGNED AT SITE AREA AND GENERAL EMREGENCY

#### ZONE "I"

Sub-Zone: I - 1  
Description: Cape Fear Volunteer Fire District  
Road Miles: 13.2  
Warning Responsibility: 1 vehicle - Cape Fear Volunteer Fire Department  
1 vehicle – Back-up, Lee County Sheriff's Department

Sub-Zone: I - 2  
Description: Cape Fear Volunteer Fire District  
Road Miles: 13  
Warning Responsibility: 1 vehicle - Cape Fear Volunteer Fire Department  
1 vehicle – Back-up, Lee County Sheriff's Department

Sub-Zone: I - 3  
Description: Cape Fear Volunteer Fire District  
Road Miles: 13  
Warning Responsibility: 1 vehicle - Cape Fear Volunteer Fire Department  
1 vehicle – Back-up, Lee County Sheriff's Department

<b>ZONE "J"</b>	
Sub-Zone:	J - 1
Description:	Deep River Volunteer Fire District
Road Miles:	14
Warning Responsibility:	1 vehicle - Deep River Volunteer Fire Department 1 vehicle – Back- up, Lee County Sheriff’s Department
Sub-Zone:	J - 2
Description:	Deep River Volunteer Fire District
Road Miles:	13
Warning Responsibility:	1 vehicle - Deep River Volunteer Fire Department 1 vehicle – Back- up, Lee County Sheriff’s Department
Sub-Zone:	J - 3
Description:	Deep River Volunteer Fire District
Road Miles:	13
Warning Responsibility:	1 vehicle - Deep River Volunteer Fire Department 1 vehicle – Back- up, Lee County Sheriff’s Department

**FIGURE-5**

<b>LEE COUNTY DESIGNATED RECEPTION and CARE CENTER</b>	
<b>Facility Location</b>	<b>Spaces</b>
Southern Lee High School 2301 Tramway Road, Sanford	1400

- (1) The care center will be staffed by the Lee County Social Services, supplemented by Red Cross where needed.
- (2) Sanford and Lemon Springs Fire Departments will furnish the personnel for radiological monitoring and decontamination activities at the designated reception center locations. Other local fire departments and rescue squads will provide supplemental support.
- (3) The care center spaces are based on 40 square feet per evacuee. If more evacuees arrive than anticipated, this square foot figure can be reduced without creating discomfort to the evacuees.
- (4) If evacuation is necessary during school hours, those children who reside inside the 10-mile evacuation area should remain at the school they attend, provided that school is outside the evacuated area.
- (5) If necessary, the EOC-emergency care center communication link will be supplemented by amateur radio support and/or by positioning a radio equipped law enforcement vehicle at each reception center.
- (6) The North Carolina RPS may provide additional expert personnel to assist and consult in the event of major reception center contamination problems.
- (7) Health Physics Technicians from Progress Energy will be available, if needed, to provide support for decontamination at reception centers.

**FIGURE-6**

**This Page Intentionally Left Blank**

**LEE COUNTY EOC STAFF  
ALERT and NOTIFICATION TIME TABLE**

A copy of the Lee County EOC Staff Alert and Notification Time Table is maintained on file in the county Emergency Management office.

**FIGURE-7**

**This Page Intentionally Left Blank**



**LEE COUNTY EMERGENCY COMMUNICATION  
SYSTEMS**

A copy of the Lee County Emergency Communications Systems is maintained on file in the county Emergency Management office.

**FIGURE-8**

**Lee - 59**

(Change 1 – January 2009)

**This Page Intentionally Left Blank**

<b>Recommended Protective Actions to Avoid Whole Body and Thyroid Dose From Exposure to a Gaseous Plume</b>		
<b>GENERAL PUBLIC</b>		
<b>Projected Population Dose TEDE*</b>	<b>Recommended Actions</b>	<b>Comments</b>
<b>&lt;0.1 rem</b>	No actions based on risk from radiation dose	
<b>0.1 to 1 rem</b>	In-place Sheltering. Monitor environmental radiation levels.	Not to be interpreted as an additional lower level PAG for in-place sheltering.
<b>1 to 5 rem (TEDE*)  5 rem (CDE**)</b>	Evacuate General Public  In-place sheltering acceptable alternative for high risk conditions	High risk may be due to immobility, infirmity or adverse health condition. Evacuation / In-place sheltering normally initiated at 1 rem. In-place sheltering is preferred action and provides equal or greater overall protection.
<b>5 to 10 rem</b>	Evacuate General Public  In-place sheltering acceptable alternative when both immobile, infirmed persons and high-risk conditions are present.	10 rem is maximum dose for in-place shelters unless it will provide greater protection than evacuation. The possibility of shelter failure should be considered for in-place sheltering recommendations at projected doses >10 rem
<b>Inhalation of Radioiodine &gt;25 rem (CED**)</b>	Administration of stable iodine to institutional persons	Requires authorization of the State Health director of designee

\* TEDE = Total Effective Dose Equivalent; \*\* CDE = Committed Dose Equivalent (To the thyroid from radioiodine)

**FIGURE-9**

Page 1 of 2

<b>Recommended Protective Actions to Avoid Whole Body and Thyroid Dose From Exposure to a Gaseous Plume</b>			
<b>EMERGENCY WORKERS</b>			
<b>DOSE LIMITS</b>	<b>ACTIVITY</b>	<b>CONDITIONS</b>	<b>COMMENTS</b>
<b>1 rem</b>	All Activities	Cumulative dose reading. Consider implementing worker rotation or other common radiation rotation methods to maintain dose as low as reasonably possible.	1 rem is the "Administrative Limit" Value for Emergency Workers
<b>5 rem</b>	All Activities	Implement worker rotation or other common radiation rotation methods to maintain dose as low as reasonably possible.	5 rem is the "Turn Back" Value for Emergency Workers
<b>10 rem</b>	Protecting Valuable Property	Lower dose not reasonably possible	Only when protection of valuable property justifies potential increased health risk.
<b>25 rem</b>	Lifesaving or protection of large populations	Lower dose not reasonably possible	Justified in situations where dose incurred by emergency worker executing his task will significantly lower the projected dose for the population being protected.
<b>&gt; 25 rem</b>	Lifesaving or protection of large populations	<b>VOLUNTARY BASIS ONLY</b> Volunteers must be fully aware of health risks involved	Awareness must include more than numerical values at which acute or delayed health effects will occur.

**FIGURE-9**  
 Page 2 of 2

**LEE COUNTY TRAINING MATRIX**

County Training Matrix is maintained as a separate document outside the Plan.

See:

Lee County Radiological Emergency Response Plan Training Matrix  
(Chart)

or

Chatham, Harnett, Lee, Wake  
Radiological Emergency Response Training Program  
(Document)

**FIGURE-10**

**This Page Intentionally Left Blank**

## EMERGENCY EQUIPMENT

Copies of required Emergency Equipment documents and the inventory for each location are maintained on file in the county Emergency Management office and/or EOC.

Equipment available to Emergency Workers in Lee County.

1. S.E. International, Inspector EXP survey meter
2. Ludlum Model 52, Portable Portal Monitor
3. Thermoluminescent Dosimeters (TLD)
4. Mid-range dosimeters (0-20R)
5. CDV-750, dosimeter charger
6. CDV-750, Model 6, dosimeter charger
7. Portable Decontamination Shower Units
8. Potassium Iodide

**FIGURE-11**

**This Page Intentionally Left Blank**



## **AUTHORITIES, REFERENCES, and AGREEMENTS**

Copies of Authorities, References, and Agreements, and other required documents are maintained on file in the County Emergency Management Office.

### A. Authorities and References

1. Chapter 166A, of the North Carolina General Statutes.
2. Lee County, State of Emergency Ordinance.
3. Lee County Emergency Operations Plan.
4. Progress Energy Harris Nuclear Plant, Emergency Plan

### B. Letters of Agreement

1. Lee County and Harris Nuclear Plant
2. Lee County and the American National Red Cross
3. Lee County and Lee County Board of Education
4. Lee County and Central Carolina Hospital
5. Lee County and Betsy Johnson Regional Hospital
6. Lee County and County Contract Ambulance Service
7. Lee County and Central Carolina Community College (Training)

**FIGURE 12**

**This Page Intentionally Left Blank**

**SUPPORTING PLANS, GUIDELINES, PROCEDURES and  
RELATED SOURCE DOCUMENTS**

Copies of required Supporting Plans, Guidelines and their Sources Documents are maintained on file in the county Emergency Management office.

A. Plans

1. North Carolina Disaster Relief and Assistance Plan
2. Lee County Emergency Operations Plan
3. Progress Energy Harris Nuclear Plant, Emergency Plan
4. Lee County Operational Data and Resource Plan

B. Standard Operation Guidelines

1. County Emergency Operation Center, (EOC)
2. Warning and Notification, General Public
3. Traffic Control and Security Road Blocks
4. Monitoring and Decontamination, Personnel and Equipment
5. Mobile / Route Alerting
6. Exposure and Contamination Control
7. Care Center Management

C. Source Documents

1. FEMA REP Manual
2. FEMA, Fundamentals Course for Radiological Monitors, (FCRM)
3. FEMA, Fundamentals Course for Radiological Response Teams
4. DOE, Modular Emergency Response Radiological Transportation Training (MERRTT)
5. EMI, Hospital Emergency Department Management of Radiation Accidents
6. ORAU, Pre-hospital Management of Radiation Accidents

**FIGURE 13**

**This Page Intentionally Left Blank**

**STATE / COUNTY EMERGENCY NOTIFICATION FORM,  
Computer**

Copies of the required Emergency Notification Forms are maintained on file in the county Warning Point and EOC.

**FIGURE-14**

**Lee - 71**

(Change 1 – January 2009)

**This Page Intentionally Left Blank**

**MESSAGE FORMAT**  
**STATE ASSUMPTION of DIRECTION and CONTROL AUTHORITY**

The following formats will be used to transfer direction and control authority to the State of North Carolina. The message will be initiated by the SERT and authorized by the SERT leader. The message will be transmitted by a method that produces a hard-copy.

**COUNTY REQUEST LETTER**

**DATE:** (DATE)  
**FROM:** (NAME), SERT Leader  
**TO:** (NAME), Chairman - (County Name) County Board of Commissioners  
(NAME), Chairman - (County Name) County Board of Commissioners  
(NAME), (Utility Emergency Response Director Title) - (Utility)

**SUBJECT:** State Assumption of Direction & Control Authority

1. At (TIME) the State of North Carolina was requested by (NAME) county or counties, to assume direction and control authority for (FACILITY NAME) event response activity.
2. In response to this request, the State Emergency Response Team (SERT) has been activated and will assume direction and control authority for (FACILITY NAME) event response activity at:

(TIME) (DATE)

Each addressee should acknowledge receipt and understanding of this message via FAX with the State EOC (SEOC) Communications center immediately upon receipt.

**1<sup>st</sup> Endorsement**

**DATE:** (DATE)  
**TO:** (NAME), SERT Leader  
**FROM:** \_\_\_\_\_, \_\_\_\_\_

(PRINT NAME)

(PRINT TITLE)

Acknowledge receipt and understanding of State of North Carolina assumption of direction and control.

\_\_\_\_\_  
(SIGNATURE)

**FIGURE-15**  
(Page 1 of 2)

**STATE OF DISASTER DECLARATION LETTER**

**DATE:** (DATE)  
**FROM:** (NAME), SERT Leader  
**TO:** (NAME), Chairman - (COUNTY NAME) County Board of Commissioners  
(NAME), Chairman - (COUNTY NAME) County Board of Commissioners  
(NAME), (UTILITY EMERGENCY RESPONSE DIRECTOR TITLE) - (UTILITY)  
**SUBJECT:** State Assumption of Direction & Control Authority

1. In response to event activity at the (FACILITY NAME), (STATE OFFICIAL) has declared a State of Disaster for:  
(AREA / COUNTIES EFFECTED)
2. As a result of this declaration, the State Emergency Response Team (SERT) has been activated and will assume direction and control authority for (FACILITY NAME) event response activity at:  
(TIME) (DATE)
3. Each addressee should acknowledge receipt and understanding of this message via FAX with the State EOC (SEOC) Communications center immediately upon receipt.

**1<sup>st</sup> Endorsement**

**DATE:** (DATE)  
**TO:** (NAME), SERT Leader  
**FROM:** \_\_\_\_\_, \_\_\_\_\_  
(PRINT NAME) (PRINT TITLE)

Acknowledge receipt and understanding of State of North Carolina assumption of direction and control.

\_\_\_\_\_  
(SIGNATURE)

**FIGURE-15**  
(Page 2 of 2)



**LEE COUNTY  
DESIGNATED EMERGENCY WORKER CENTERS**

A list of the Lee County Designated Emergency Worker Centers is maintained on file in the county Emergency Management office.

**FIGURE-16**

**Lee - 75**

(Change 1 – January 2009)

**This Page Intentionally Left Blank**

**LEE COUNTY  
EVACUATION TIME ESTIMATE**

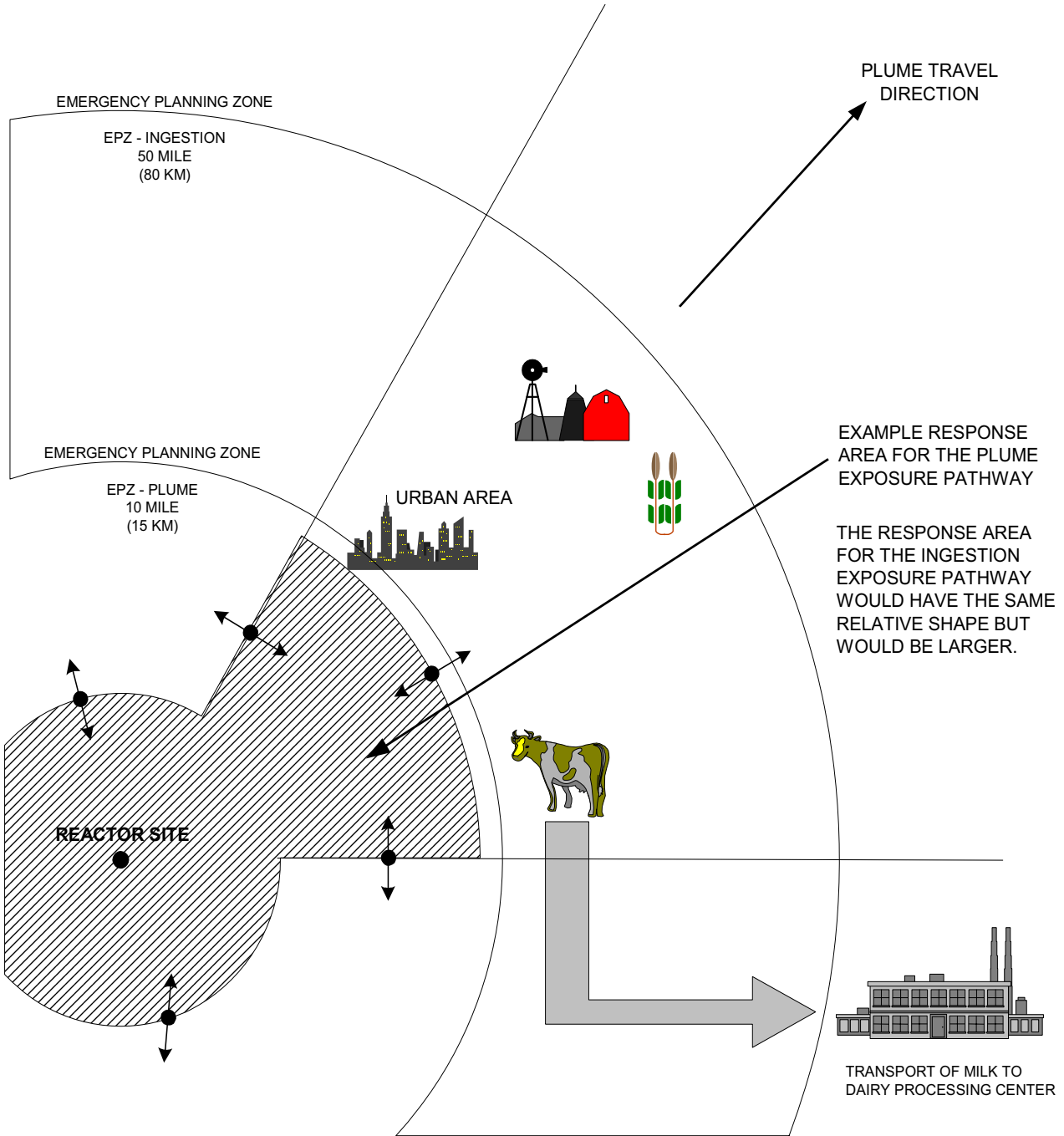
Copies of the required current Evacuation Time Estimate are maintained on file in the county Emergency Management Office and/or EOC.

**FIGURE-17**

**This Page Intentionally Left Blank**

**EMERGENCY PLANNING ZONE (EPZ) PLUME and INGESTION  
CONCEPTS MAP**

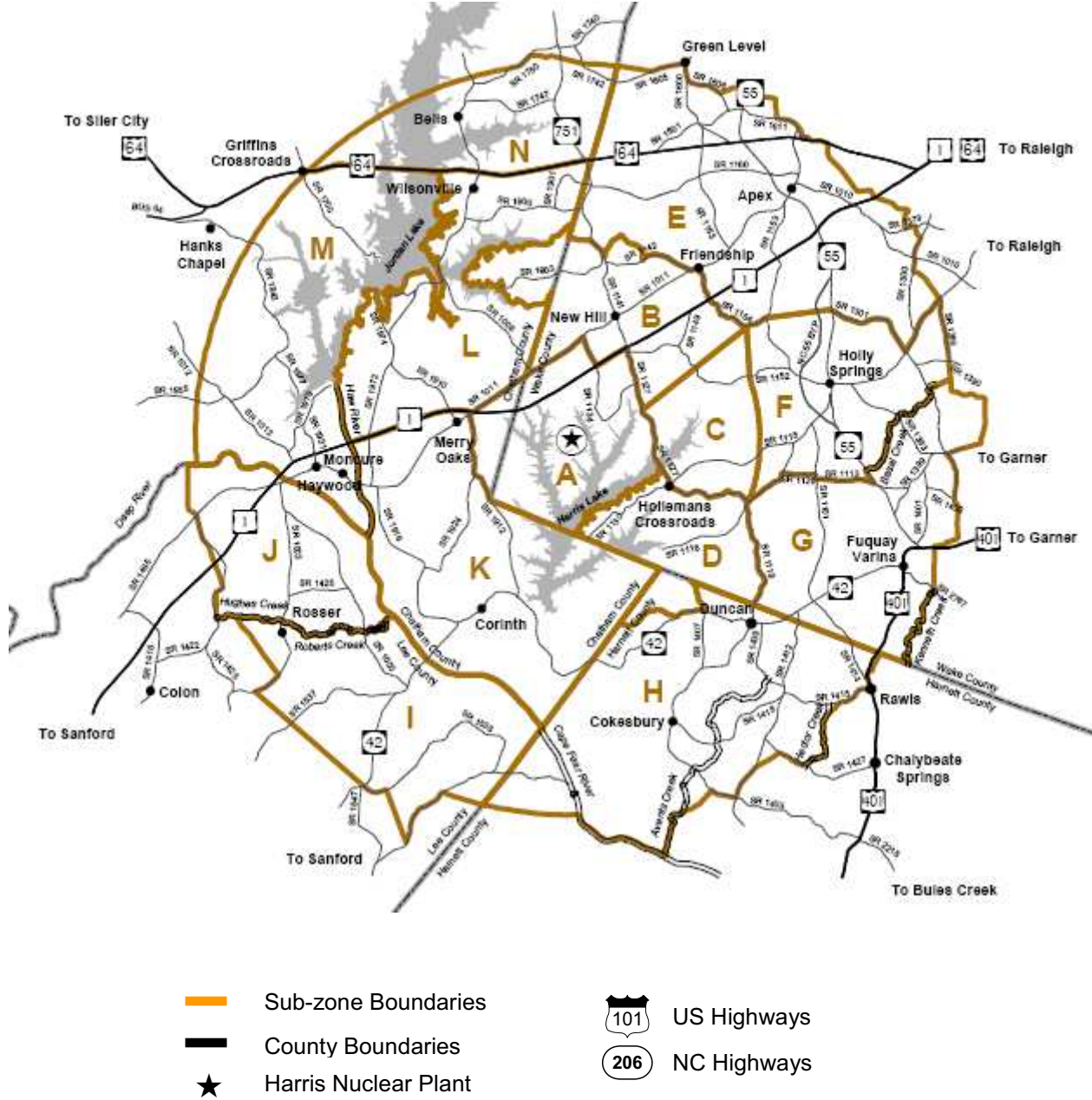
**Concept of Emergency Planning Zones**



**FIGURE-18**

**This Page Intentionally Left Blank**

**EMERGENCY PLANNING ZONE PLUME and SUB-ZONES,  
 EMERGENCY EVACUATION ROUTES**



**FIGURE-19**

**This Page Intentionally Left Blank**



**SIREN LOCATION MAP**

Copies of the required Siren Location Map are maintained on file in the county Emergency Management Office and/or EOC.

**FIGURE-20**

**This Page Intentionally Left Blank**

**LEE COUNTY EMERGENCY OPERATION CENTER**

Copies of the current Lee County EOC configuration are maintained on file in the county Emergency Management Office and/or EOC.

**FIGURE-21**

**This Page Intentionally Left Blank**

**SCHOOLS, HOSPITALS, NURSING & DOMICILIARY CARE  
FACILITY**

A list of the Risk Schools, Risk Hospitals, Family Care Facilities, Child Care Facilities, and Nursing/Group Homes is maintained on file in the county Emergency Management Office and/or EOC.

**FIGURE-22**

**This Page Intentionally Left Blank**

**MEDICAL and PUBLIC HEALTH SUPPORT**

**Rex Hospital, Raleigh, NC.**

Location: 4420 Lake Boone Trail

Bed Capacity: 433

Fixed Heliport: No (Use of parking lot possible).

Distance from Harris Plant: 22 miles

Contact Person: Emergency Room Charge Nurse

Hospital has a plan to treat a number of contaminated patients at one time and is the primary hospital for the Harris Plant.

**WakeMed-Raleigh, Raleigh, NC.**

Location: 3000 New Bern Avenue

Bed Capacity: 515

Fixed Heliport: Yes (Near Emergency Room)

Distance from Harris Plant: 31 miles

Hospital has a plan to treat a limited number of contaminated patients.

**Betsy Johnson Regional Hospital, Dunn, NC.**

Location: 800 Tilghman Drive

Bed Capacity: 101

Fixed Heliport: Yes, (Near Emergency Room)

Distance from Harris Plant: 45 miles

Contact Person(s): Risk Manager or  
Head Nurse, RN

The hospital has a plan to treat a limited number of contaminated patients.

**FIGURE-23**

**This Page Intentionally Left Blank**



**HARRIS NUCLEAR PLANT SITE MAP**

Copies of the required Harris Nuclear Plant Site Map are maintained on file in the county Emergency Management Office and/or EOC.

**FIGURE-24**

**This Page Intentionally Left Blank**