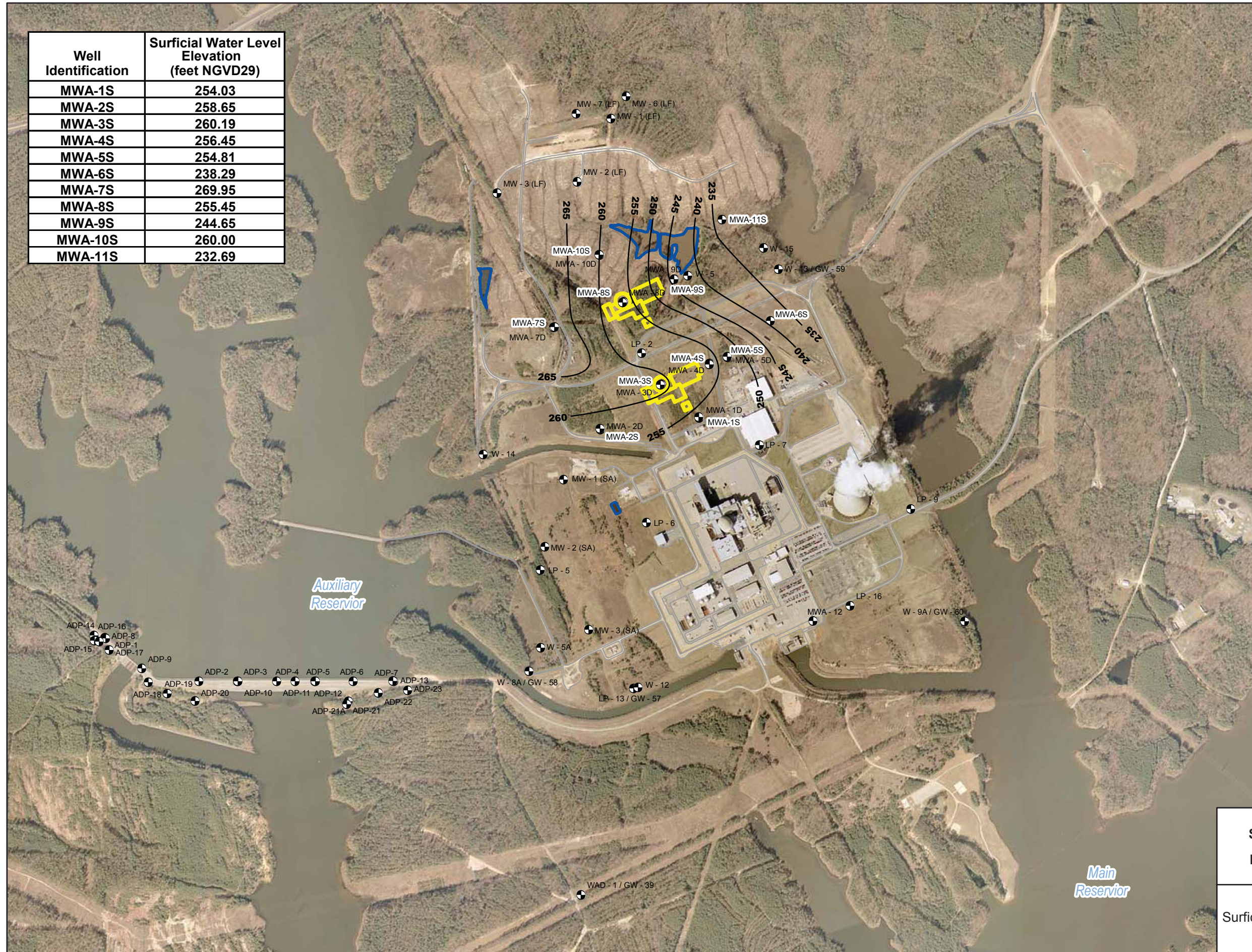


Well Identification	Surficial Water Level Elevation (feet NGVD29)
MWA-1S	254.03
MWA-2S	258.65
MWA-3S	260.19
MWA-4S	256.45
MWA-5S	254.81
MWA-6S	238.29
MWA-7S	269.95
MWA-8S	255.45
MWA-9S	244.65
MWA-10S	260.00
MWA-11S	232.69



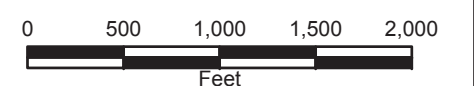
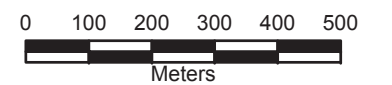
**LEGEND**

- Plant Site Monitoring Wells and Piezometers
- Proposed Safety-Related Structures
- Ponds
- Equipotential Lines



**Note:**

- 1) Main Reservoir also known as Harris Reservoir
- 2) Auxiliary Reservoir normal pool elevation is 252-ft NGVD29.
- 3) Main Reservoir normal pool elevation is 220-ft NGVD29.



Progress Energy Carolinas  
**Shearon Harris Nuclear Power Plant  
 Units 2 and 3**  
**Part 2, Final Safety Analysis Report**  
 New Hill, North Carolina

Potentiometric Surface Map of the  
 Surficial/Overburen Aquifer: February 28, 2007  
 FIGURE 2.4.12.207