


KEWAUNEE POWER STATION



NRC BRIEFING
GRADED EXERCISE
JUNE 23, 2009

KPS Graded Exercise Briefing

- Introduction
- Plant / Site Overview
- Facility & Organization Overview
- Dose Assessment
- Exercise Activities

Introduction:

Paul Serra

Dominion Fleet Emergency Preparedness Manager

Steve Wood

Kewaunee Power Station
Manager, Nuclear Emergency Preparedness

John Egdorf

Kewaunee Power Station
Supervisor, Nuclear Emergency Preparedness

Kewaunee Power Station (KPS)

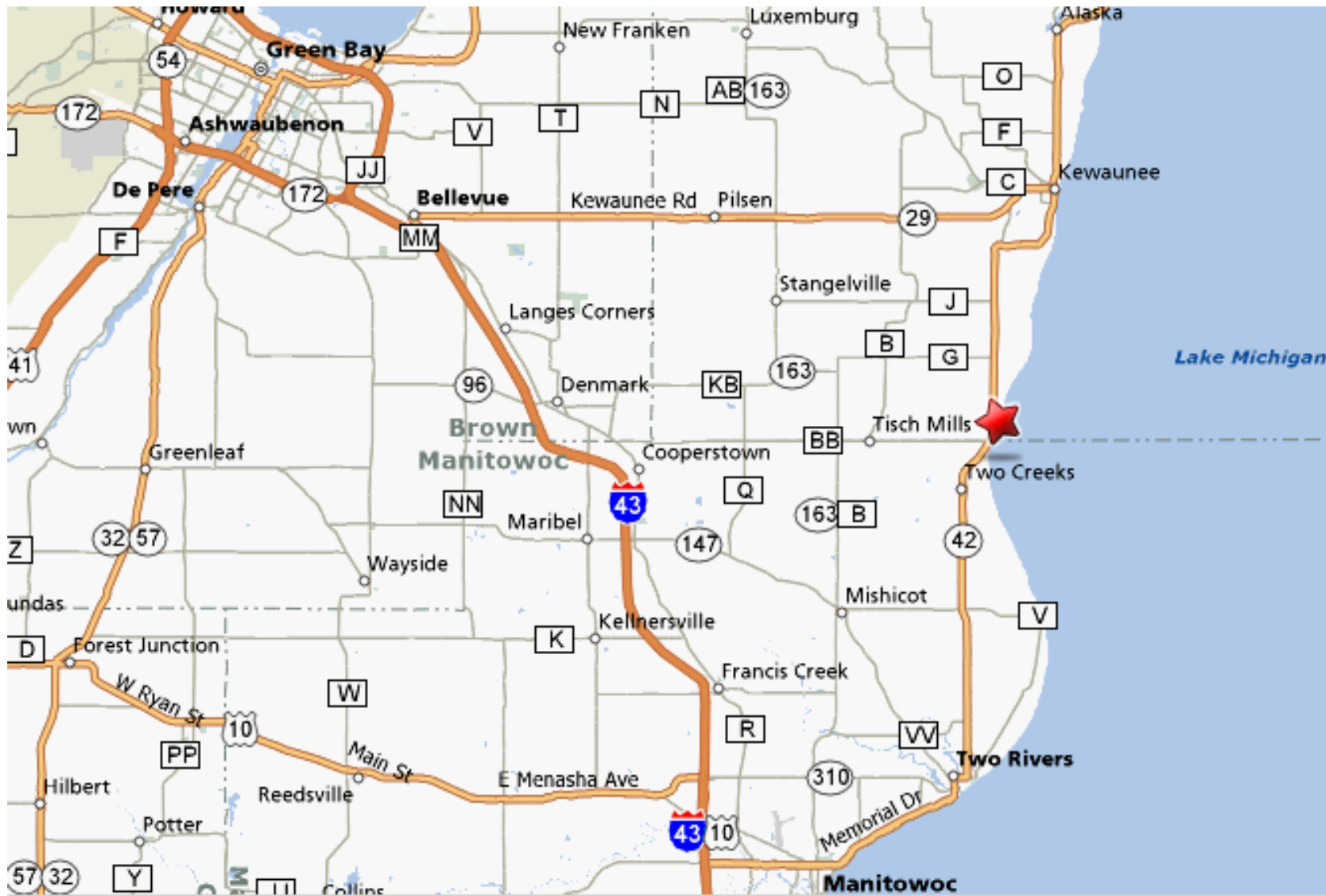


Purpose

- Provide briefing to the NRC Region III Site Team to enhance an integrated response between the Kewaunee Power Station Emergency Response Organization and NRC Region III



Kewaunee Location



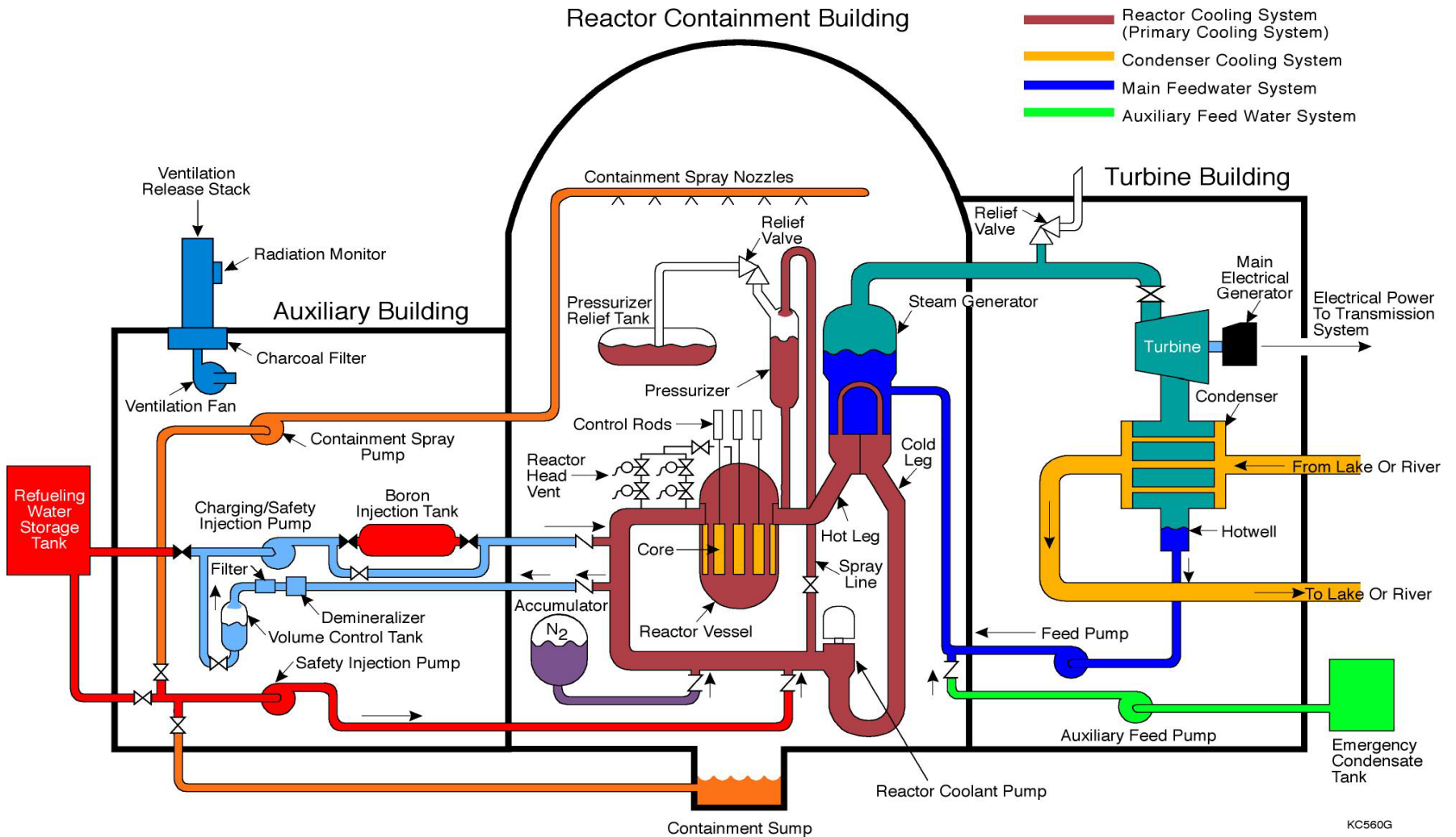
Kewaunee Power Station

- 1 Unit
- Westinghouse PWR
- 574 MW
- Commercial Operation
 - Unit 1 – December 1973
- Cooling Water – Lake Michigan
 - ~400,000 gallons per minute

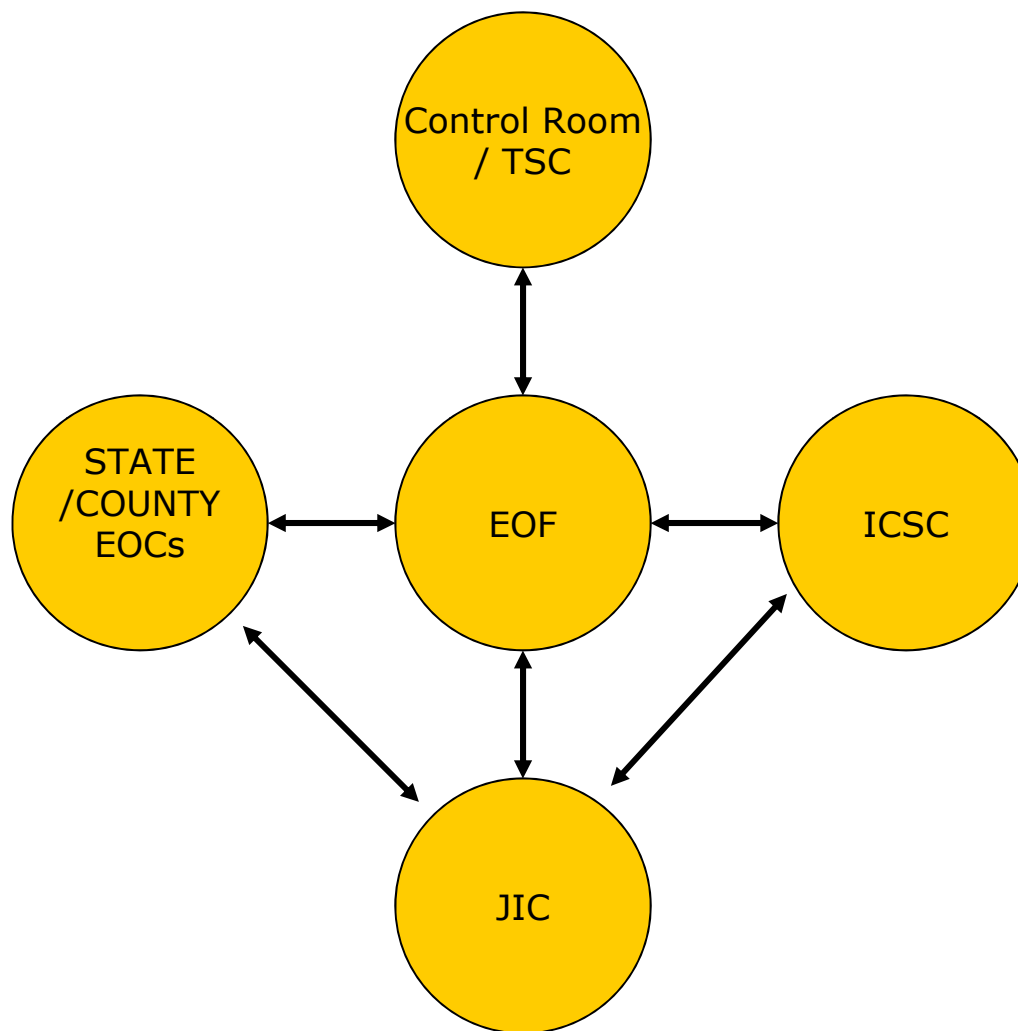
Kewaunee Power Station



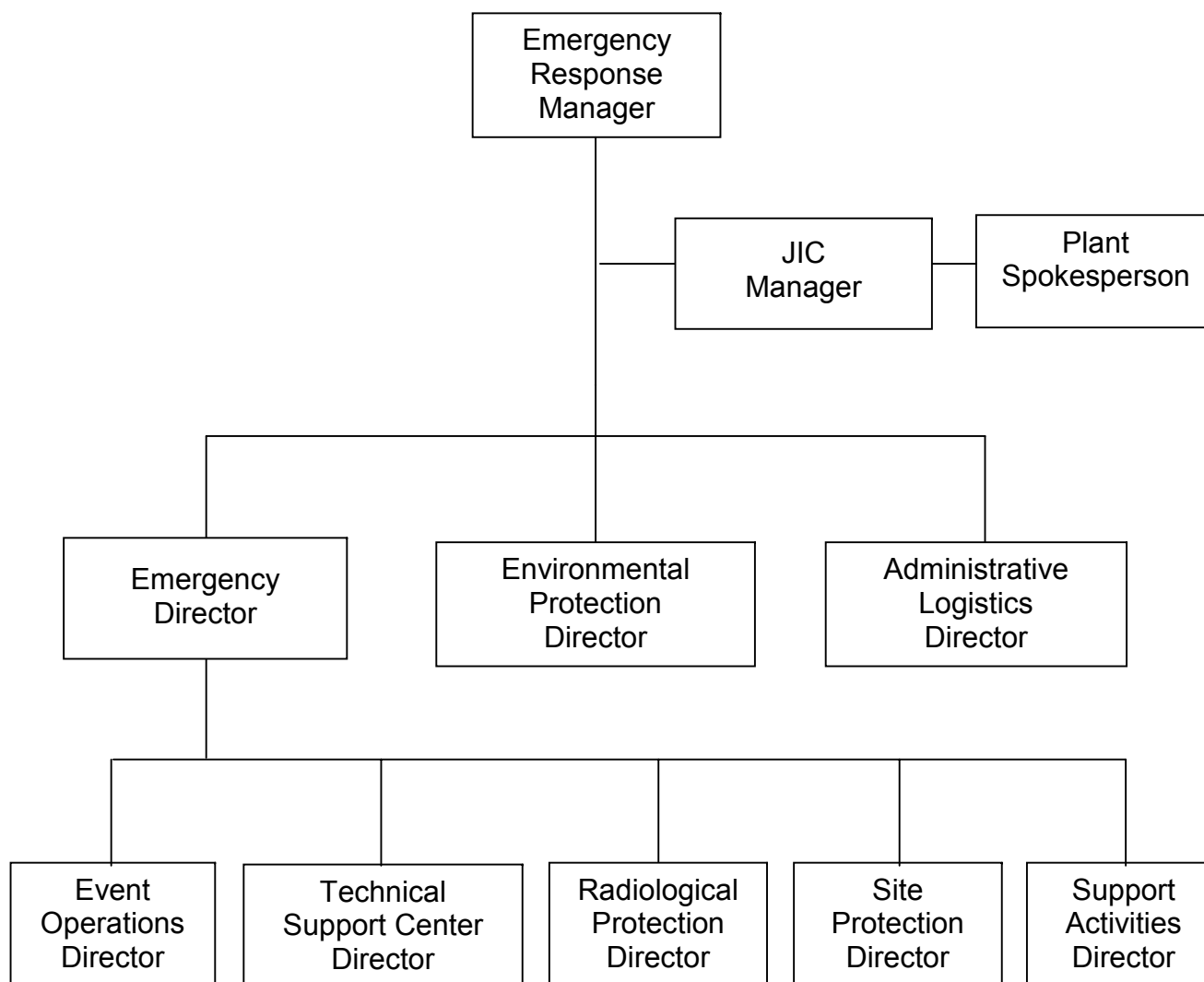
- High Pressure Safety Injection System (Emergency Core Cooling)
- Low Pressure Safety Injection System (Emergency Core Cooling)
- Containment Spray System
- Main Steam System
- Reactor Cooling System (Primary Cooling System)
- Condenser Cooling System
- Main Feedwater System
- Auxiliary Feed Water System



Facility & Organization Overview



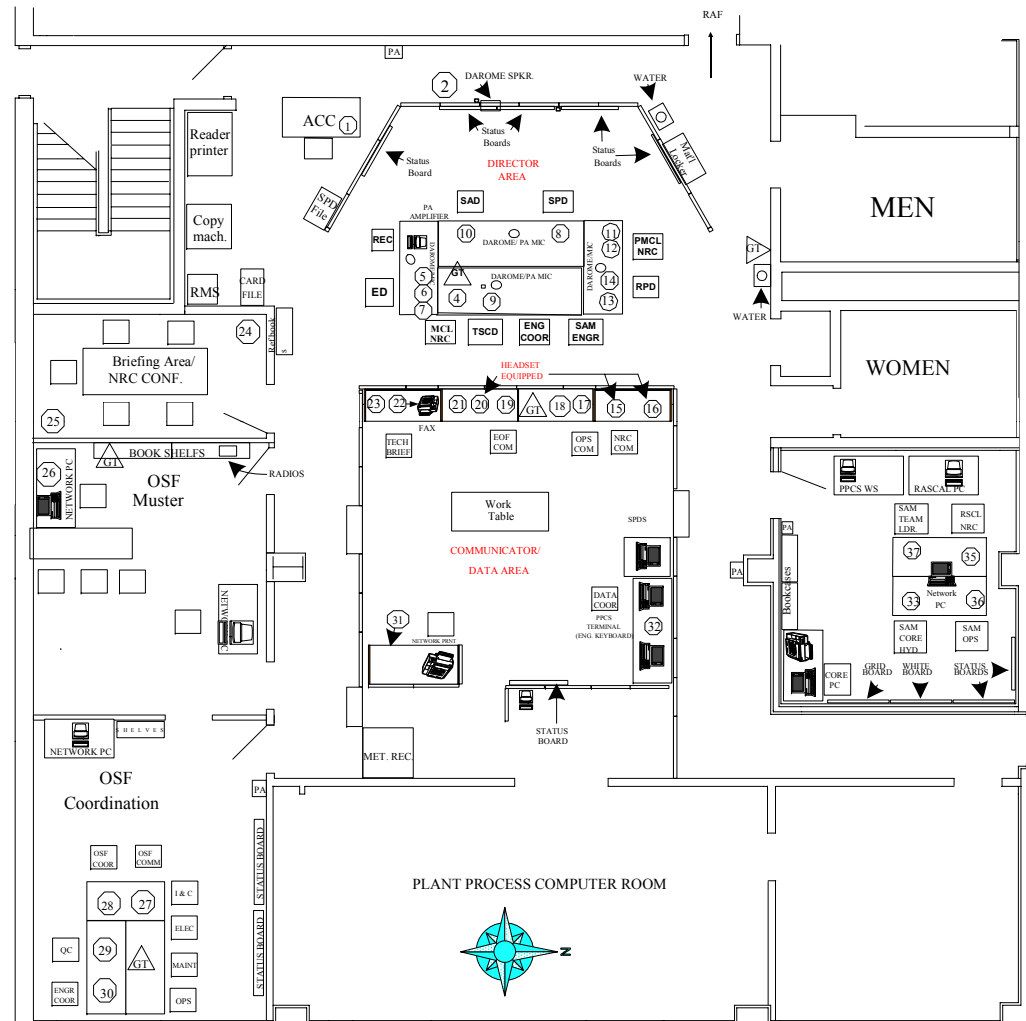
Emergency Organizational Structure



KPS ERO Responsibilities

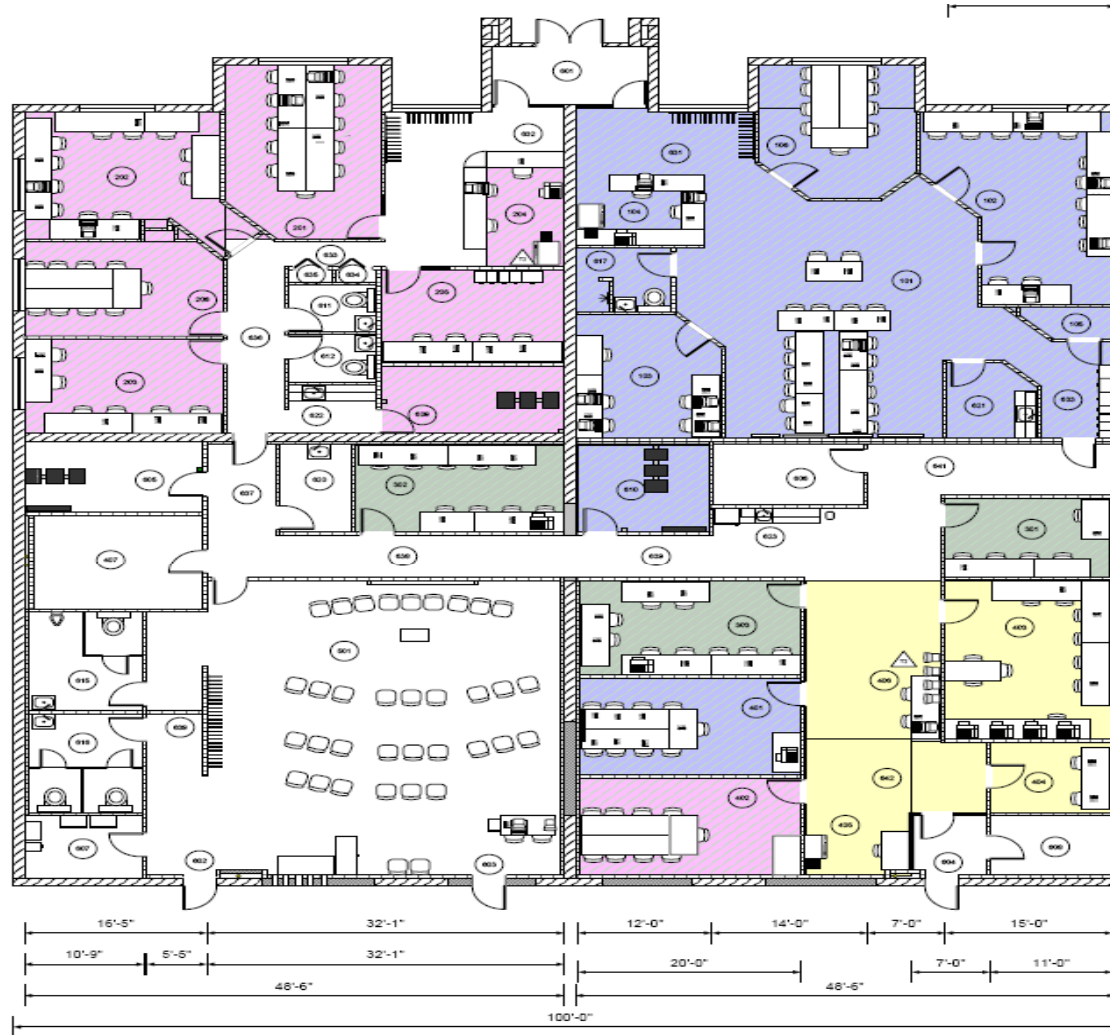
Facility Responsibilities:	Control Room	Technical Support Center	Emergency Operations Facility
Event Classification			
PAR Decision-Making			
State/Local Notifications			
NRC Notifications			
HPN Notifications			
Emergency Exposure Controls			
Control of Field Monitoring Teams / Dose Assessment			

Technical Support Center



EP-FIG-003.vsd

Emergency Operating Facility



equipment
number for unique #)

Kewaunee Power Station (KPS) and Point Beach Nuclear Plant (PBNP) Emergency Operations Facility (EOF)	
• 100 Series Rooms = Kewaunee Power Station EOF.	
• 200 Series Rooms = Point Beach Nuclear Plant EOF.	
• 300 Series Rooms = NRC EOF Work Area.	
• 400 Series Rooms = Joint Information Center.	
• 500 Series Rooms = Media Center for KPS & PBNP.	
• 600 Series Rooms = Building Infrastructure Support Rooms.	
Ron Thomas, Project Manager	
SCALE 1/8" = 1'-0"	REV 12/5/05
SHEET	1 OF 1



Region III / Kewaunee Counterparts

NRC REGION III	KEWAUNEE
Site Team Director	Emergency Response Manager (ERM)
Technical Assessment Branch Lead	Engineering Licensing Support (EngLi)
Protective Measures Branch Lead	Environmental Protection Director (EPD)

Kewaunee Counterpart Chart

NRC REGION III	KEWAUNEE
Dose Assessor	Dose Projection Coordinator (DPC)
Response Coord. Leader	Administrative Logistics Director
Public Information Leader	Joint Information Center (JIC) Manager

Kewaunee Counterpart Chart

NRC REGION III	KEWAUNEE
Deputy Technical Assessment Branch Lead (TSC)	Emergency Director (ED)
Radiation Safety Coordinator (TSC)	Radiation Protection Director (RPD)
Safeguards / Security Branch Lead (EOF / TSC)	Site Protection Director (SPD)

Dose Assessment

- KPS - PC-MIDAS
- State of Wisconsin & NRC – RASCAL
- Primary Dose Assessment - EOF

Exercise Day

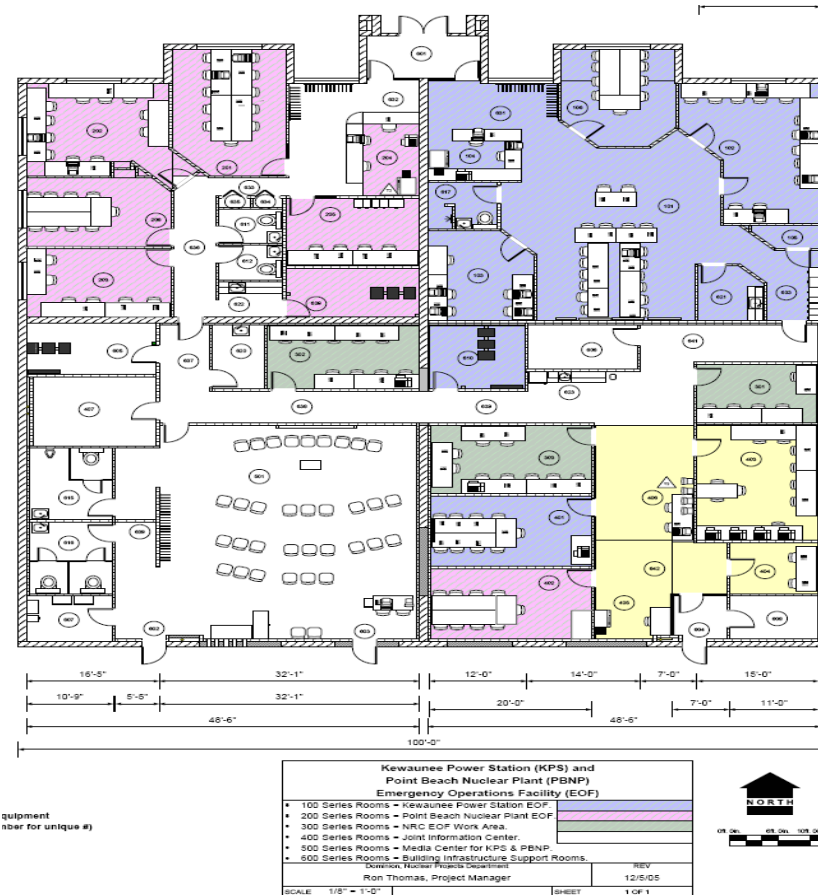
- 0700 – Simulator Briefing
- 0730 – Commence Exercise
- Mid-Afternoon – Terminate Exercise
 - Facility Critiques

Emergency Operations Facility



Access

- ❑ Arrive at EOF back door
- ❑ Enter and Check-In
- ❑ Show NRC ID
- ❑ Receive NRC Badges for EOF access



State and Counties Extent of Play

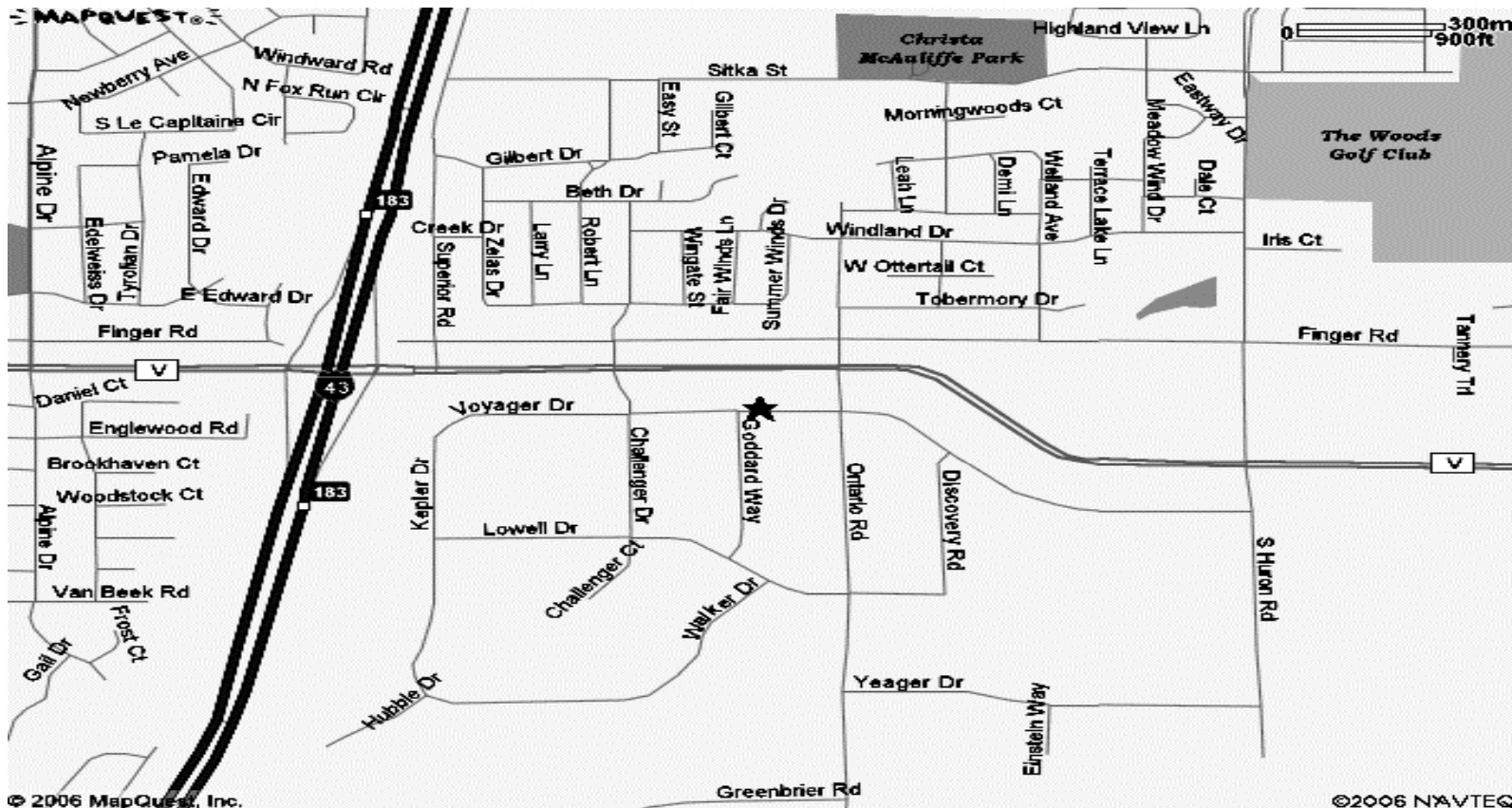
□ State of Wisconsin

- EOC
- JIC
- Field Teams and Laboratory

□ Kewaunee and Manitowoc Counties

- EOC
- JIC

Directions to EOF



From I-43 in Green Bay:

Take exit number 183 towards MASON ST (County Highway V)

Turn RIGHT onto E MASON STREET.

Turn RIGHT onto CHALLENGER DRIVE.

Turn LEFT onto VOYAGER DRIVE.

EOF/JIC/MBC is at 3060 Voyager Drive



Contact Information

Paul Serra

Dominion Fleet Emergency Preparedness Manager
804-273-2508

Steve Wood

Kewaunee Manager, Nuclear Emergency Preparedness
920-388-8860

John Egdorf

Kewaunee Supervisor, Nuclear Emergency Preparedness
920-388-8733

QUESTIONS?

