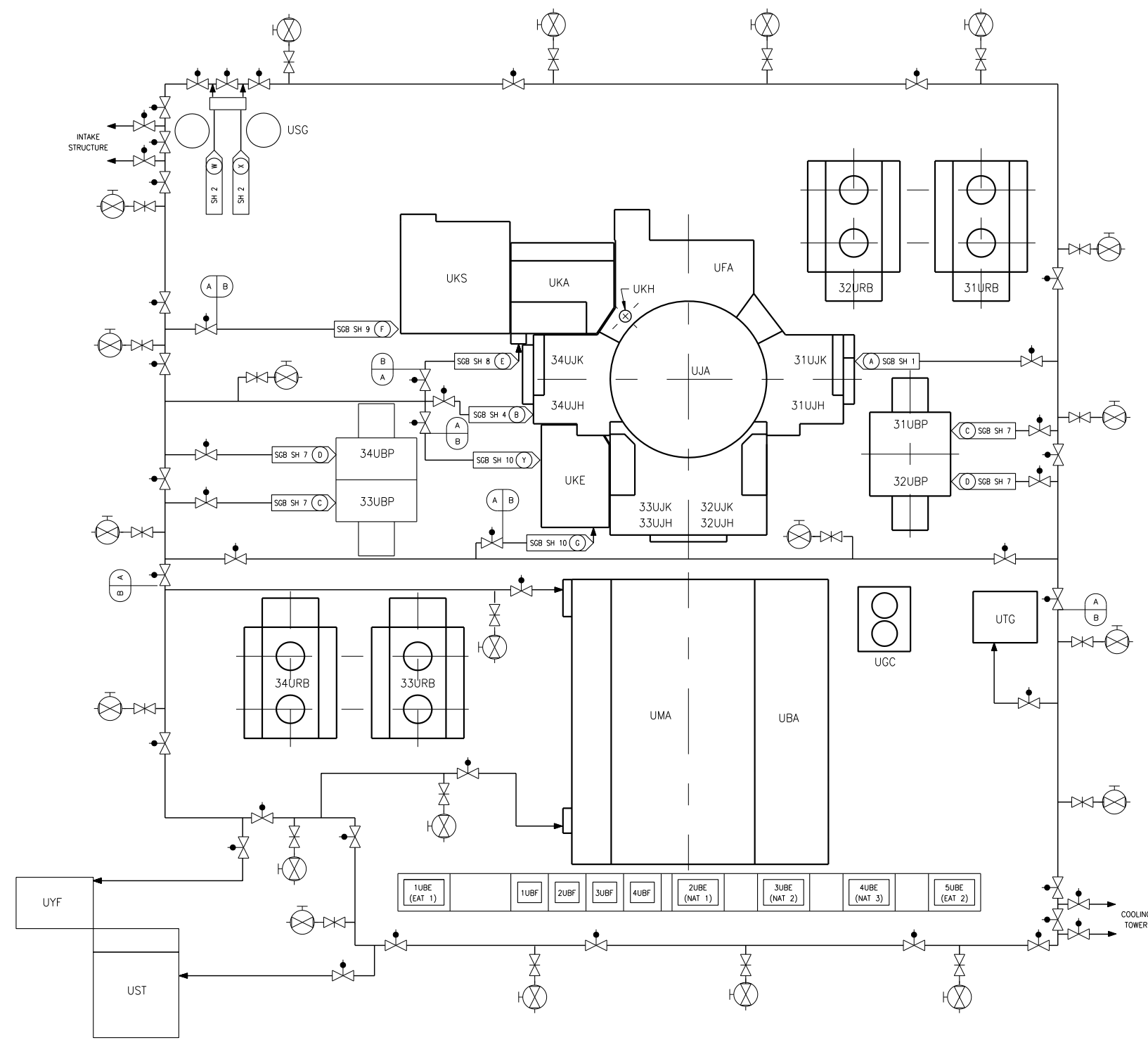


Figure 9.5.1-1—Fire Water Distribution System
Sheet 1 of 13



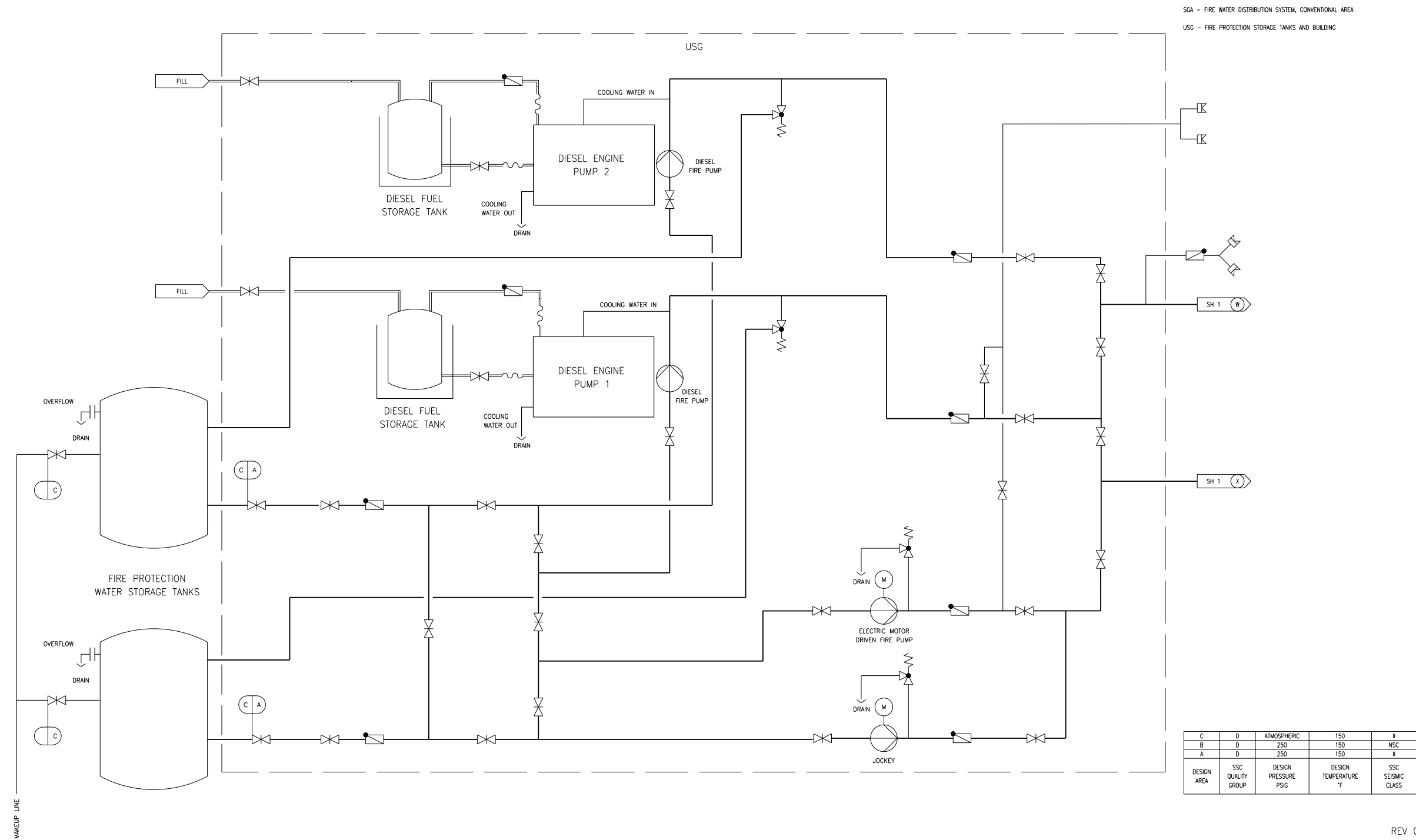
- SGA - FIRE WATER DISTRIBUTION SYSTEM, CONVENTIONAL AREA
- SGB - FIRE WATER DISTRIBUTION SYSTEM INSIDE NUCLEAR ISLAND

- UBA - SWITCHGEAR BUILDING
- UBE - AUXILIARY POWER TRANSFORMER AREA
- UBF - GENERATOR TRANSFORMER AREA
- UBG - GENERATOR TRANSFORMER AREA
- UBH - GENERATOR TRANSFORMER AREA
- UBI - GENERATOR TRANSFORMER AREA
- UBJ - GENERATOR TRANSFORMER AREA
- UBK - GENERATOR TRANSFORMER AREA
- UBL - GENERATOR TRANSFORMER AREA
- UBM - GENERATOR TRANSFORMER AREA
- UBN - GENERATOR TRANSFORMER AREA
- UBO - GENERATOR TRANSFORMER AREA
- UBP - GENERATOR TRANSFORMER AREA
- UBQ - GENERATOR TRANSFORMER AREA
- UBR - GENERATOR TRANSFORMER AREA
- UBS - GENERATOR TRANSFORMER AREA
- UBT - GENERATOR TRANSFORMER AREA
- UBU - GENERATOR TRANSFORMER AREA
- UBV - GENERATOR TRANSFORMER AREA
- UBW - GENERATOR TRANSFORMER AREA
- UBX - GENERATOR TRANSFORMER AREA
- UBY - GENERATOR TRANSFORMER AREA
- UBZ - GENERATOR TRANSFORMER AREA
- UCA - FUEL BUILDING
- UCB - DEMINERALIZED WATER STORAGE AREA
- UCC - REACTOR BUILDING
- UCD - SAFEGUARD BUILDING MECHANICAL, DIVISION 1
- UCE - SAFEGUARD BUILDING MECHANICAL, DIVISION 2
- UCF - SAFEGUARD BUILDING MECHANICAL, DIVISION 3
- UCG - SAFEGUARD BUILDING MECHANICAL, DIVISION 4
- UCH - SAFEGUARD BUILDING ELECTRICAL, DIVISION 1
- UCI - SAFEGUARD BUILDING ELECTRICAL, DIVISION 2
- UCJ - SAFEGUARD BUILDING ELECTRICAL, DIVISION 3
- UCK - SAFEGUARD BUILDING ELECTRICAL, DIVISION 4
- UCM - NUCLEAR AUXILIARY BUILDING
- UCN - ACCESS BUILDING
- UCO - VENT STACK
- UCP - RADIOACTIVE WASTE PROCESSING BUILDING
- UCQ - TURBINE BUILDING
- UCR - ESSENTIAL SERVICE WATER COOLING TOWER STRUCTURE, DIVISION 1
- UCS - ESSENTIAL SERVICE WATER COOLING TOWER STRUCTURE, DIVISION 2
- UCD - ESSENTIAL SERVICE WATER COOLING TOWER STRUCTURE, DIVISION 3
- UCF - ESSENTIAL SERVICE WATER COOLING TOWER STRUCTURE, DIVISION 4
- UCG - FIRE PROTECTION STORAGE TANKS AND BUILDING
- UCH - WORKSHOP AND WAREHOUSE BUILDING
- UCI - CENTRAL GAS SUPPLY BUILDING
- UCJ - SECURITY ACCESS FACILITY

| | | | | |
|-------------|-------------------|----------------------|-----------------------|-------------------|
| C | D | ATMOSPHERIC | 150 | II |
| B | D | 250 | 150 | NSC |
| A | D | 250 | 150 | II |
| DESIGN AREA | SSC QUALITY GROUP | DESIGN PRESSURE PSIG | DESIGN TEMPERATURE °F | SSC SEISMIC CLASS |

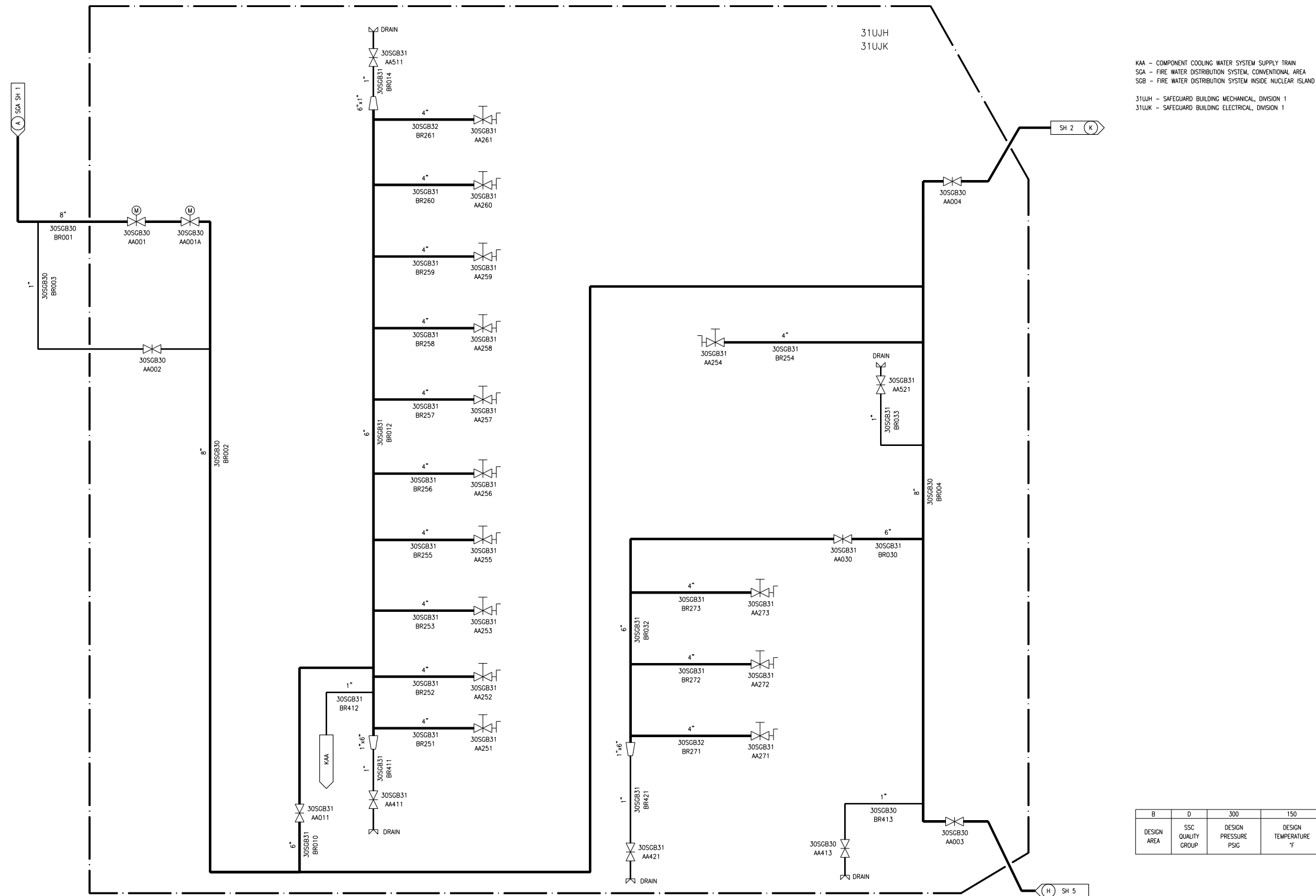
SGA01T2

Figure 9.5.1-1—Fire Water Distribution System
Sheet 2 of 13



REV 001
SGA02T2

Figure 9.5.1-1—Fire Water Distribution System
Sheet 3 of 13

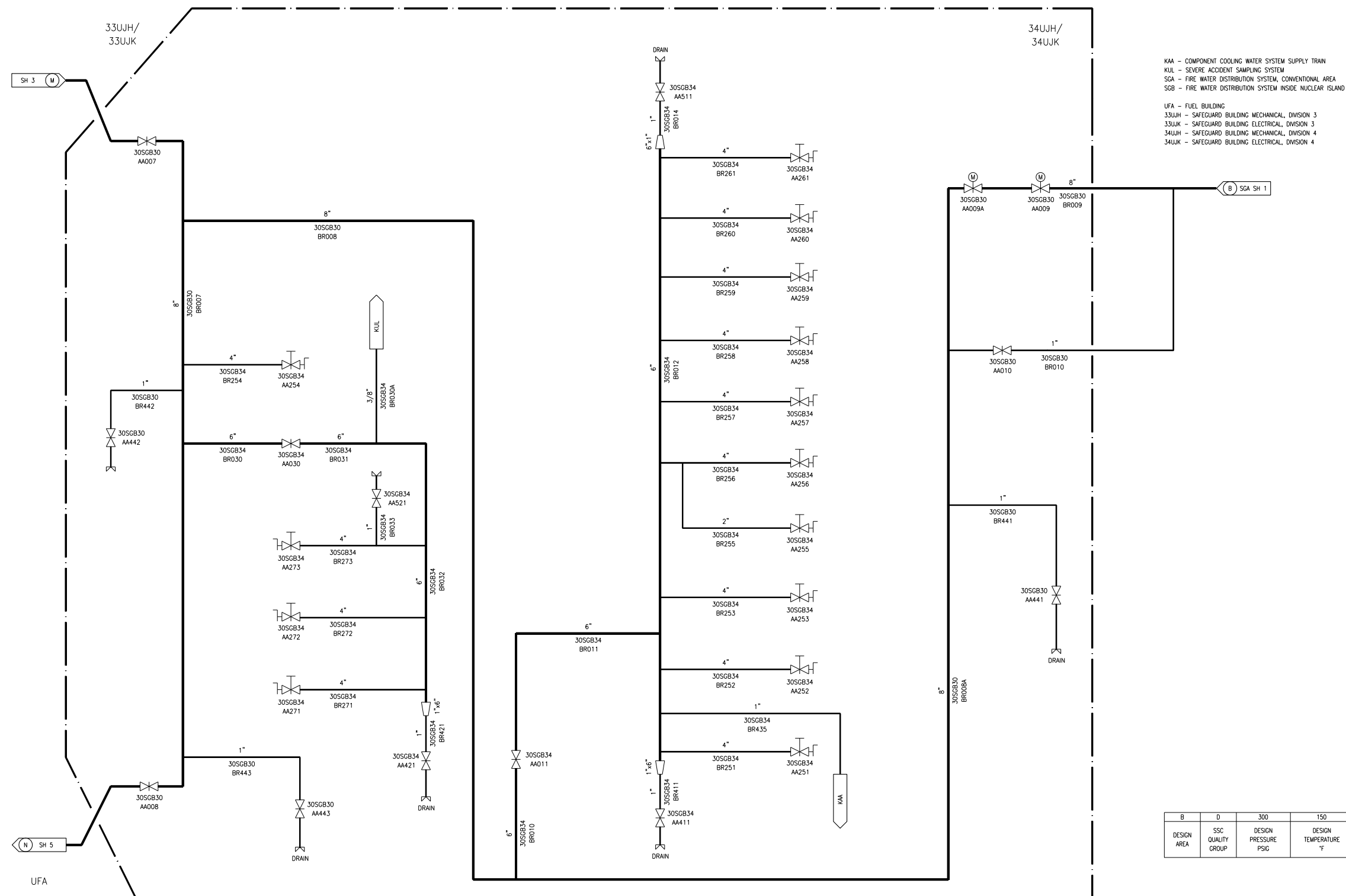


KAA - COMPONENT COOLING WATER SYSTEM SUPPLY TRAIN
 SGA - FIRE WATER DISTRIBUTION SYSTEM, CONVENTIONAL AREA
 SGB - FIRE WATER DISTRIBUTION SYSTEM INSIDE NUCLEAR ISLAND
 31UJH - SAFEGUARD BUILDING MECHANICAL, DIVISION 1
 31UJK - SAFEGUARD BUILDING ELECTRICAL, DIVISION 1

| | | | | |
|-------------|-------------------|----------------------|-----------------------|-------------------|
| B | D | 300 | 150 | II |
| DESIGN AREA | SSC QUALITY GROUP | DESIGN PRESSURE PSIG | DESIGN TEMPERATURE °F | SSC SEISMIC CLASS |

SGB01T2

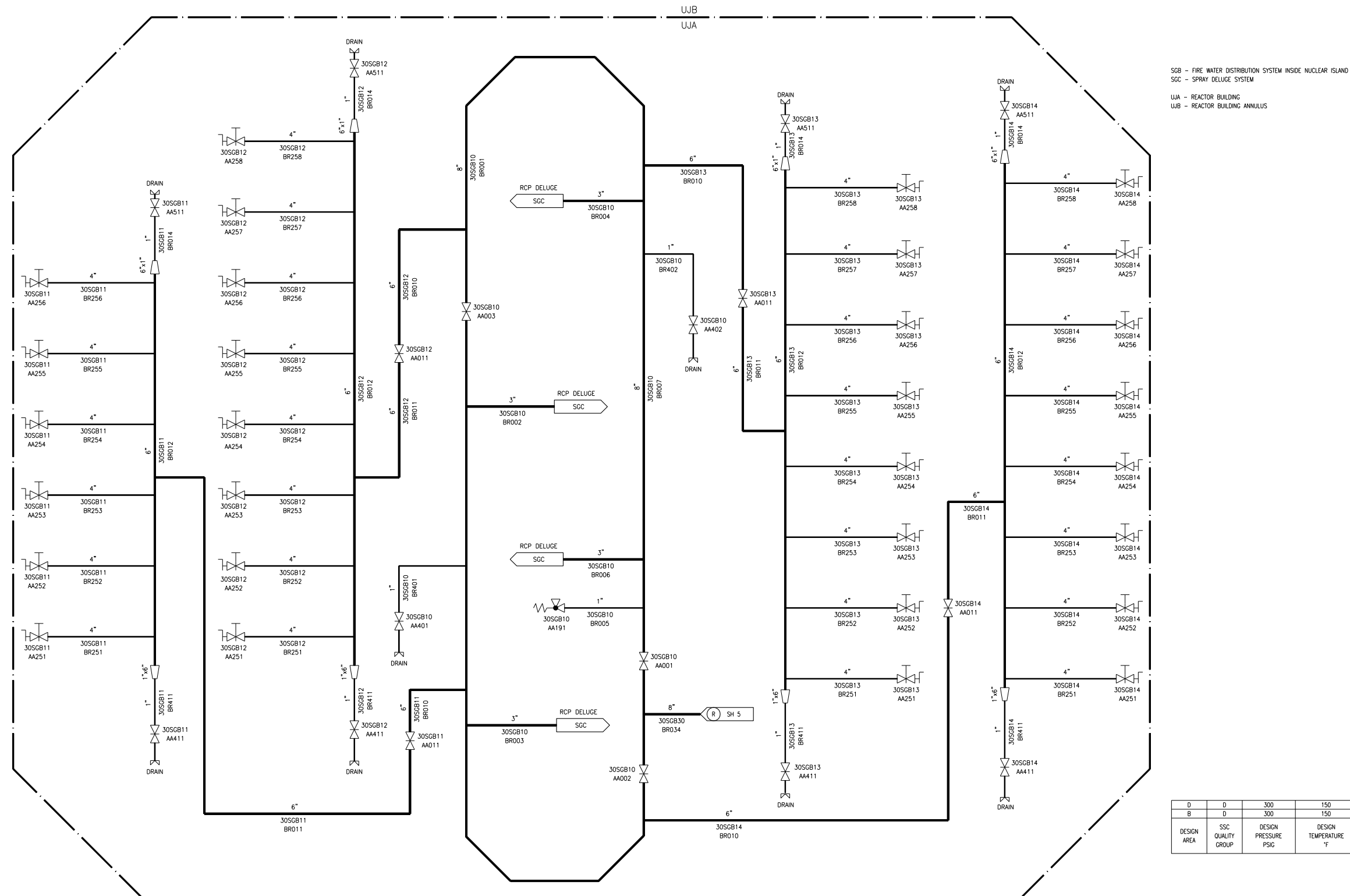
Figure 9.5.1-1—Fire Water Distribution System
Sheet 6 of 13



| | | | | |
|-------------|-------------------|----------------------|-----------------------|-------------------|
| B | D | 300 | 150 | II |
| DESIGN AREA | SSC QUALITY GROUP | DESIGN PRESSURE PSIG | DESIGN TEMPERATURE °F | SSC SEISMIC CLASS |

SGB04T2

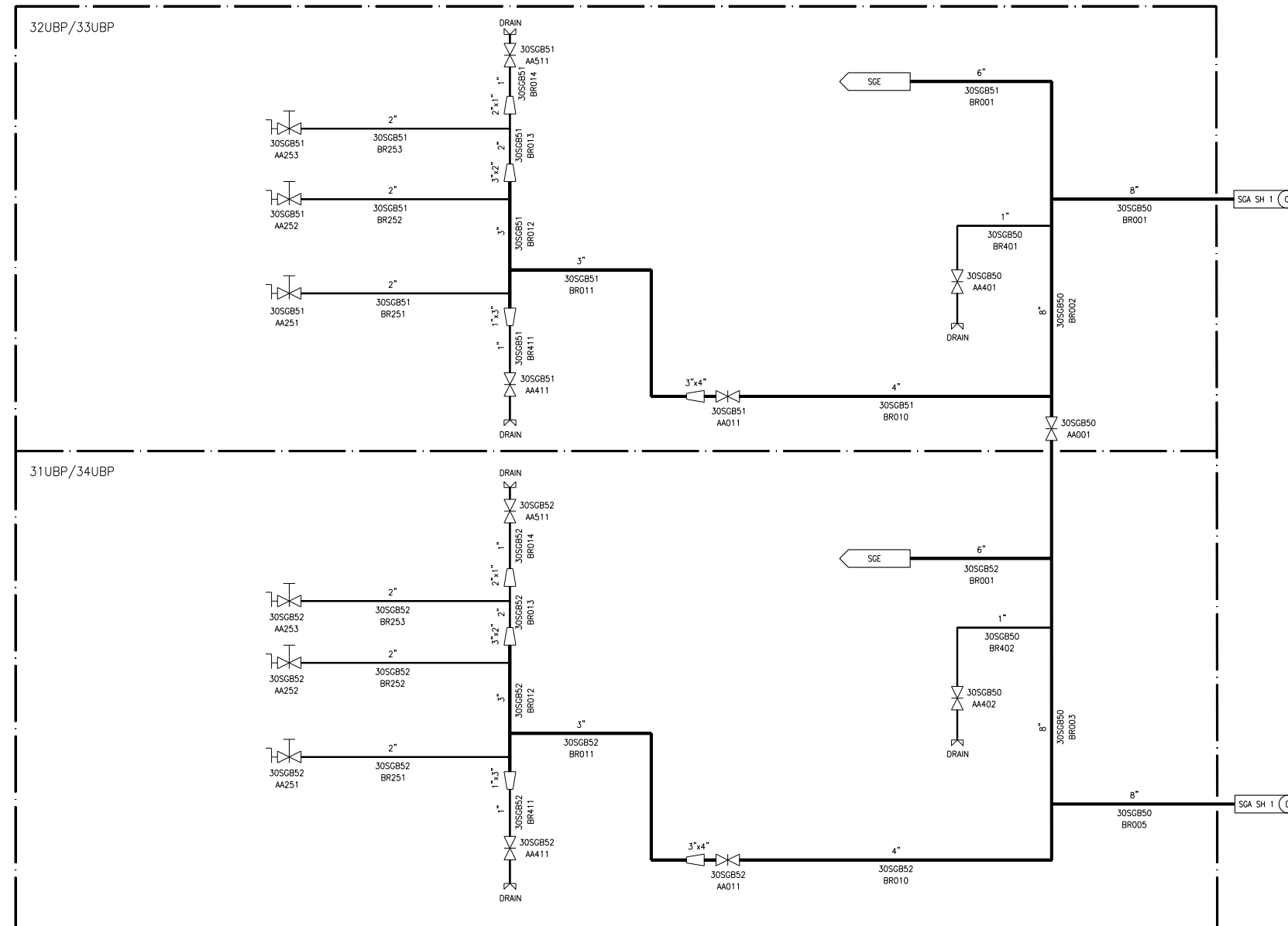
Figure 9.5.1-1—Fire Water Distribution System
Sheet 8 of 13



| | | | | |
|-------------|-------------------|----------------------|-----------------------|-------------------|
| D | D | 300 | 150 | I |
| B | D | 300 | 150 | II |
| DESIGN AREA | SSC QUALITY GROUP | DESIGN PRESSURE PSIG | DESIGN TEMPERATURE °F | SSC SEISMIC CLASS |

REV 001
SGB06T2

Figure 9.5.1-1—Fire Water Distribution System
Sheet 9 of 13



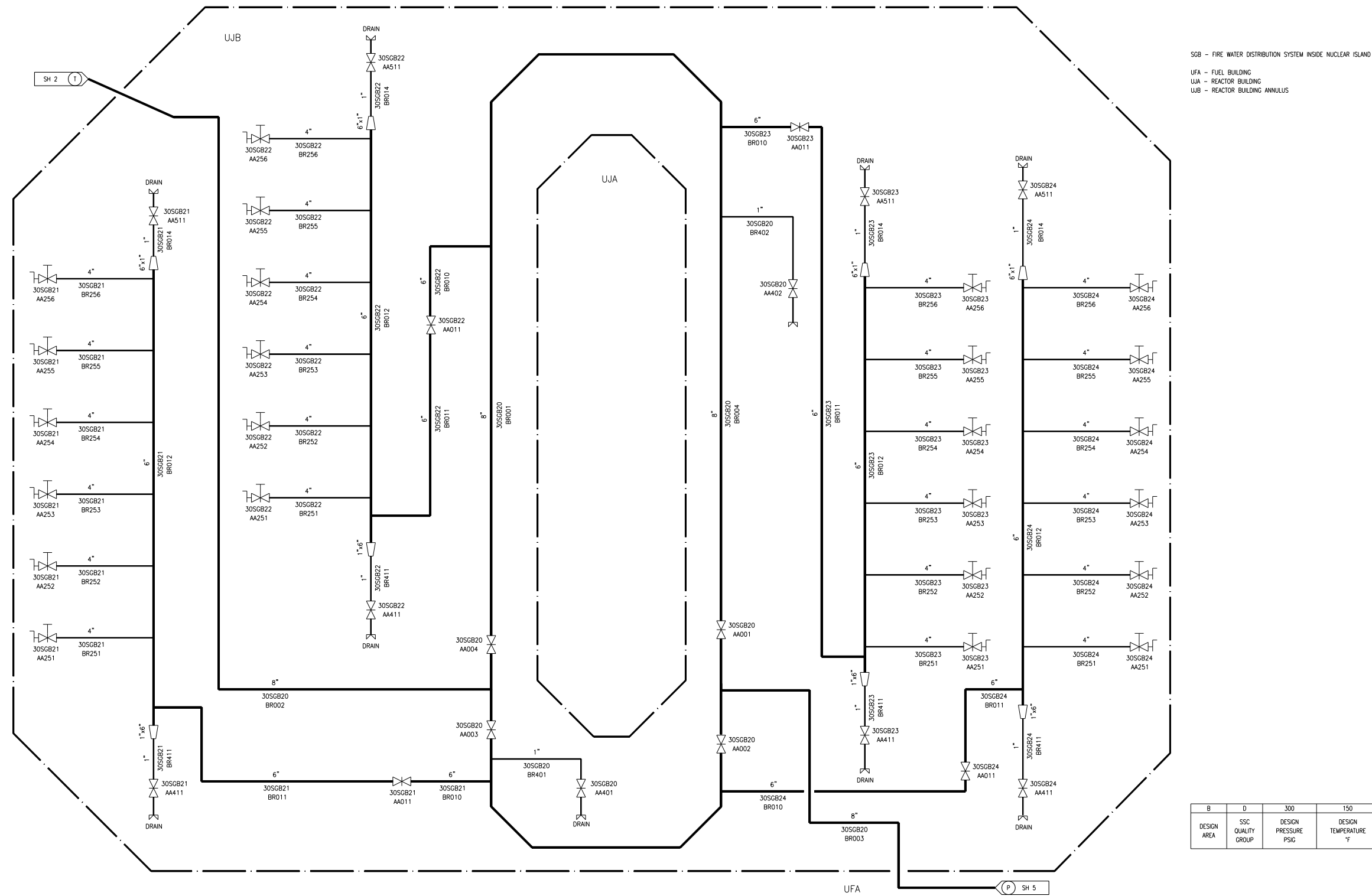
SCA - FIRE WATER DISTRIBUTION SYSTEM, CONVENTIONAL AREA
 SGB - FIRE WATER DISTRIBUTION SYSTEM INSIDE NUCLEAR ISLAND
 SCE - SPRINKLER SYSTEMS

31UBP - EMERGENCY POWER GENERATING, DIVISION 1
 32UBP - EMERGENCY POWER GENERATING, DIVISION 2
 33UBP - EMERGENCY POWER GENERATING, DIVISION 3
 34UBP - EMERGENCY POWER GENERATING, DIVISION 4

| | | | | |
|-------------|-------------------|----------------------|-----------------------|-------------------|
| B | D | 300 | 150 | II |
| DESIGN AREA | SSC QUALITY GROUP | DESIGN PRESSURE PSIG | DESIGN TEMPERATURE °F | SSC SEISMIC CLASS |

SGB07T2

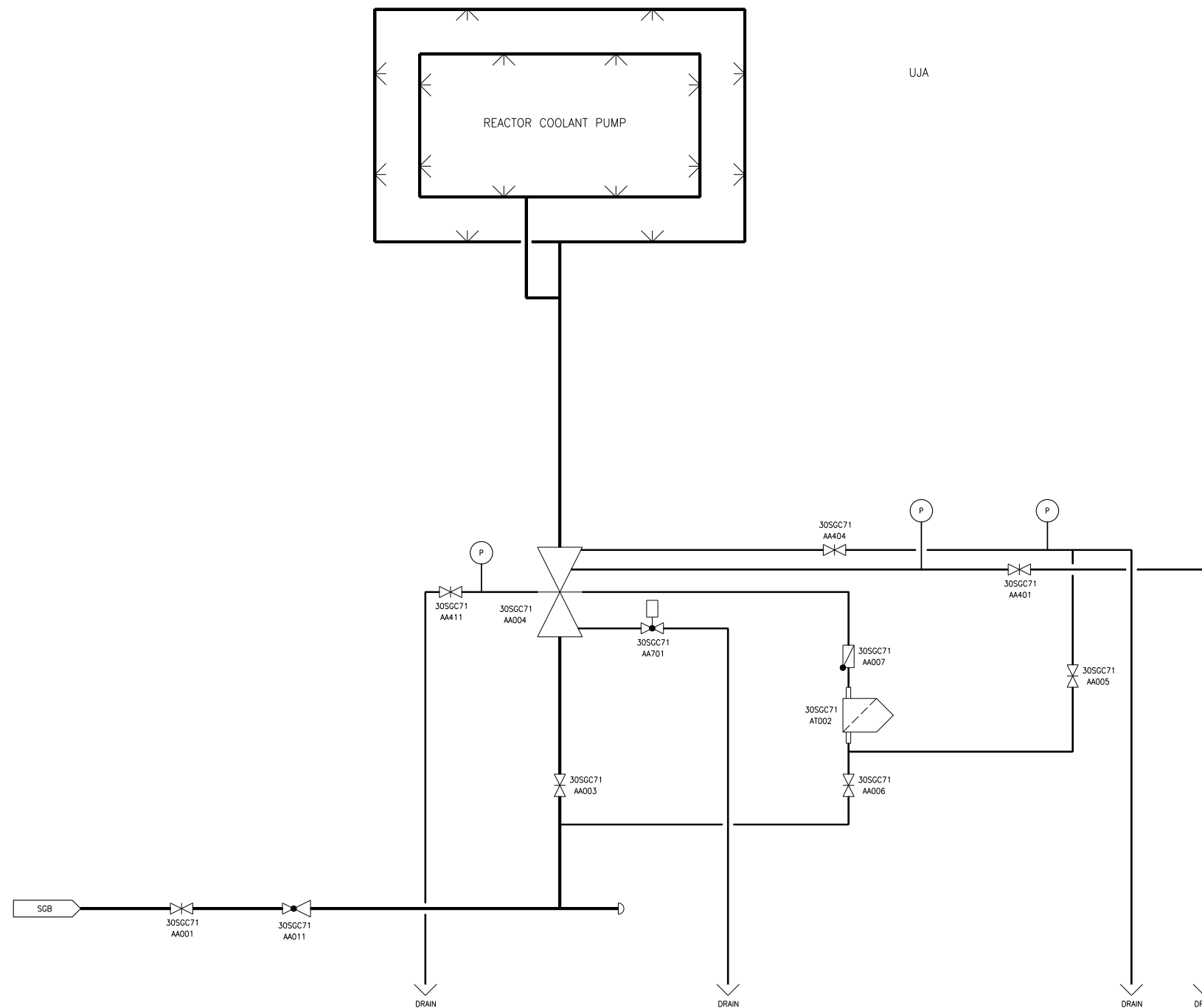
Figure 9.5.1-1—Fire Water Distribution System
Sheet 13 of 13



| | | | | |
|-------------|-------------------|----------------------|-----------------------|-------------------|
| B | D | 300 | 150 | II |
| DESIGN AREA | SSC QUALITY GROUP | DESIGN PRESSURE PSIG | DESIGN TEMPERATURE °F | SSC SEISMIC CLASS |

SGB11T2

Figure 9.5.1-2—Spray Deluge Systems Layout
Sheet 1 of 2



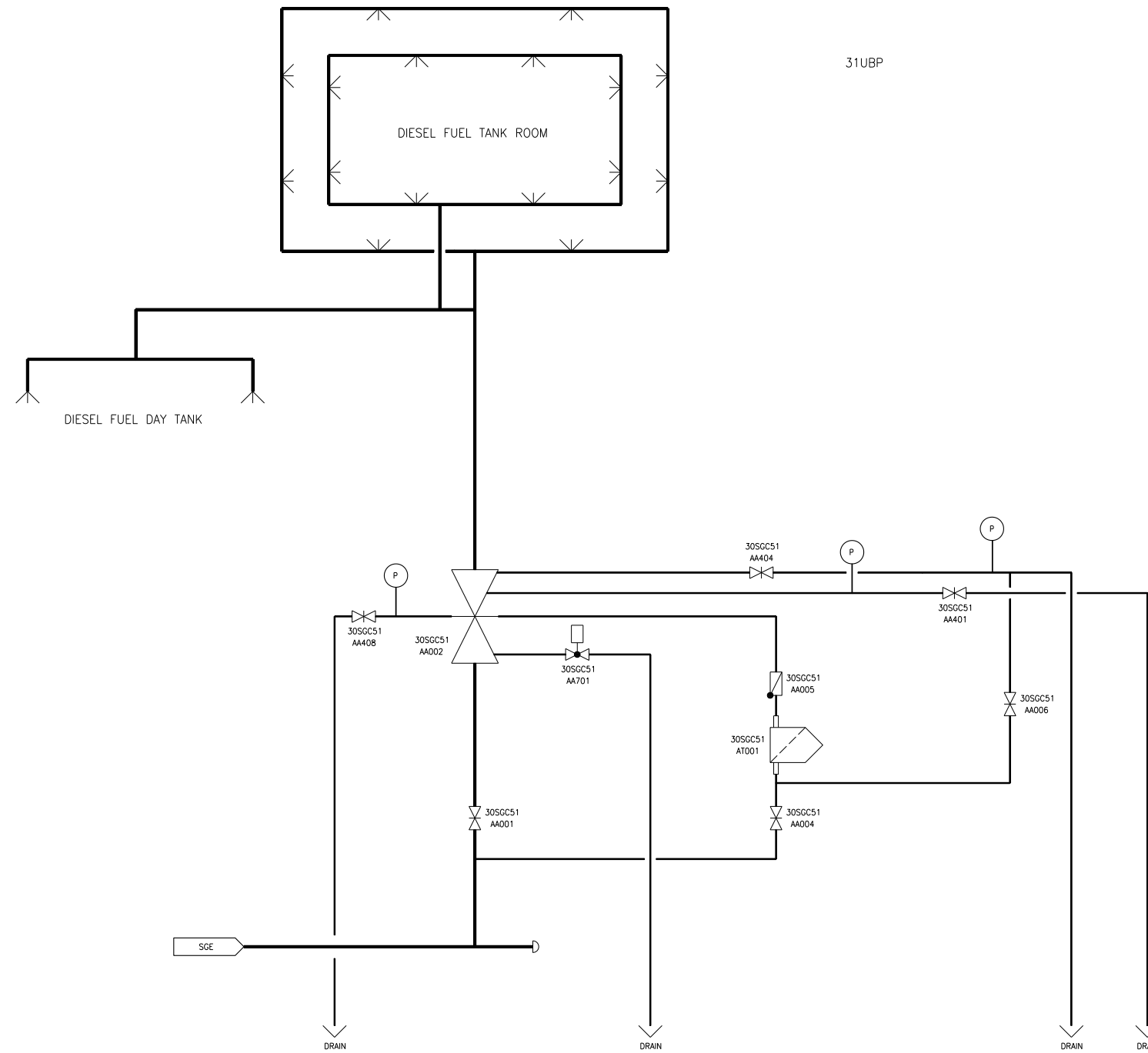
SGB - FIRE WATER SYSTEM; NUCLEAR ISLAND
SGC - SPRAY DELUGE SYSTEM
UJA - REACTOR BUILDING

NOTE:
REACTOR COOLANT PUMP LOOP 1 SHOWN, REPRESENTATIVE OF SPRAY DELUGE SYSTEM FOR LOOPS 2, 3 AND 4.

| DESIGN AREA | SSC QUALITY GROUP | DESIGN PRESSURE PSIG | DESIGN TEMPERATURE °F | SSC SEISMIC CLASS |
|-------------|-------------------|----------------------|-----------------------|-------------------|
| B | D | 175 | 122.4 | NSC |

SGC01T2

Figure 9.5.1-2—Spray Deluge Systems Layout
Sheet 2 of 2



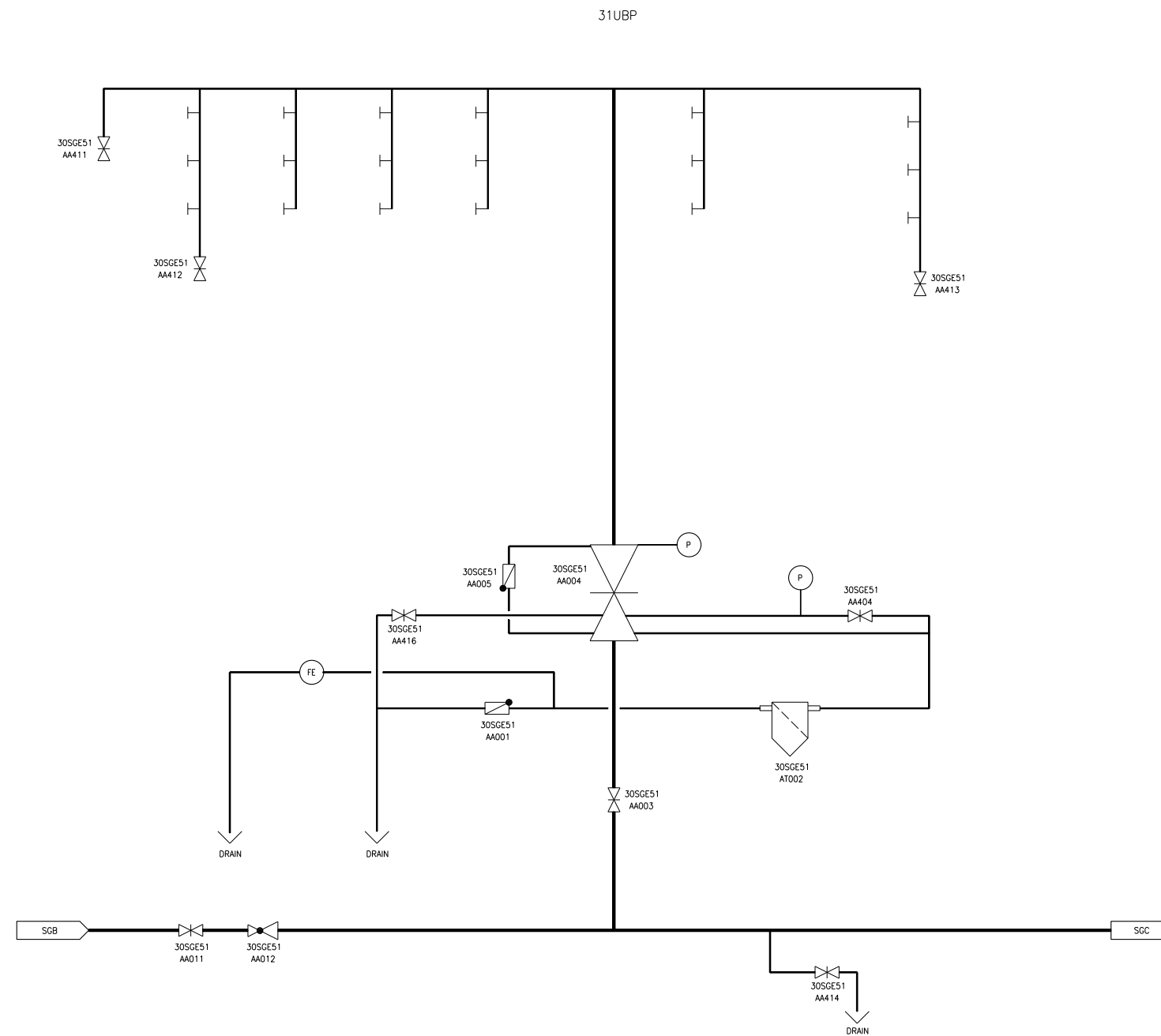
SGC - SPRAY DELUGE SYSTEM
SGE - SPRINKLER SYSTEMS
31UBP - EMERGENCY DIESEL GENERATING BUILDING, DIVISION 1

NOTE:
SPRAY DELUGE DIVISION 1 SHOWN, REPRESENTATIVE OF DIVISIONS 2, 3 AND 4.

| | | | | |
|-------------|-------------------|----------------------|-----------------------|-------------------|
| B | D | 175 | 122.4 | NSC |
| DESIGN AREA | SSC QUALITY GROUP | DESIGN PRESSURE PSIG | DESIGN TEMPERATURE °F | SSC SEISMIC CLASS |

SGC02T2

Figure 9.5.1-3—Sprinkler Systems Layout



SGB - FIRE WATER DISTRIBUTION SYSTEM INSIDE NUCLEAR ISLAND
 SGC - SPRAY DELUGE SYSTEMS
 SGE - SPRINKLER SYSTEMS
 31UBP - EMERGENCY DIESEL GENERATING BUILDING, DIVISION 1

NOTE:
SPRINKLER DIVISION 1 SHOWN, IS REPRESENTATIVE OF DIVISIONS 2, 3 AND 4.

| | | | | |
|-------------|-------------------|----------------------|-----------------------|-------------------|
| B | D | 175 | 122.4 | N5C |
| DESIGN AREA | SSC QUALITY GROUP | DESIGN PRESSURE PSIG | DESIGN TEMPERATURE °F | SSC SEISMIC CLASS |

SCE01T2

